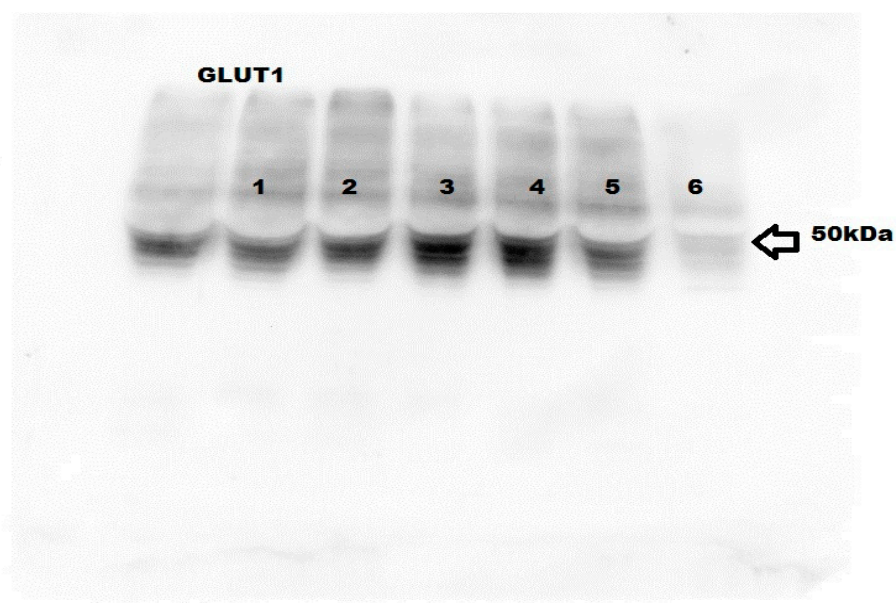
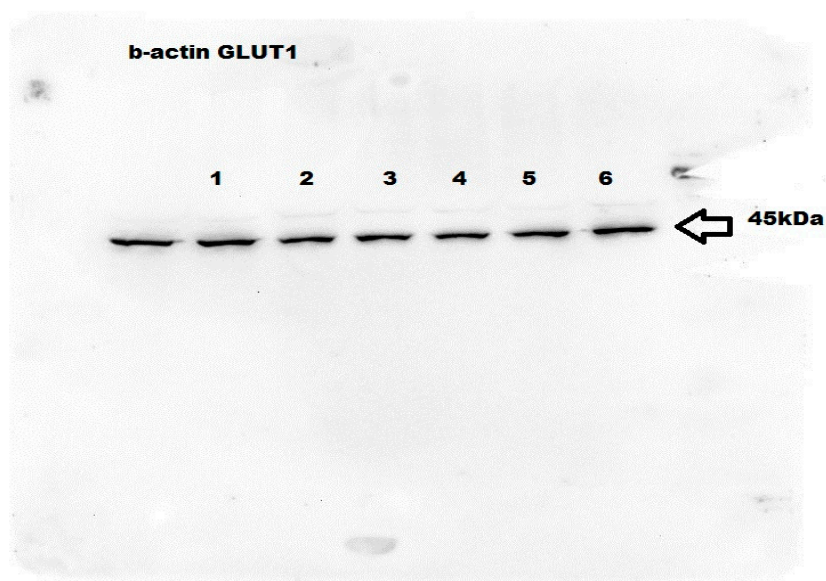


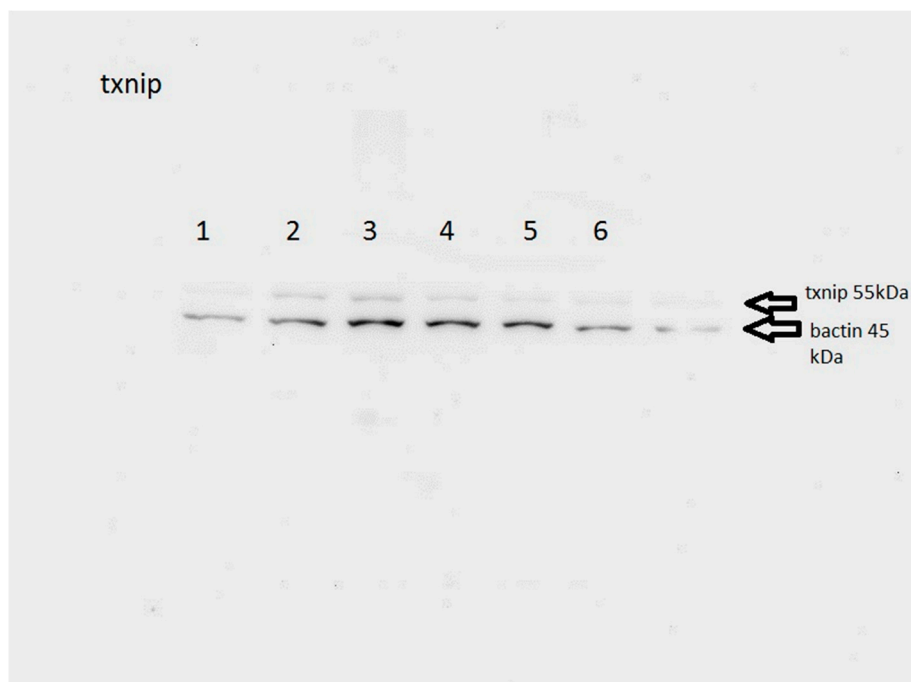
(a)



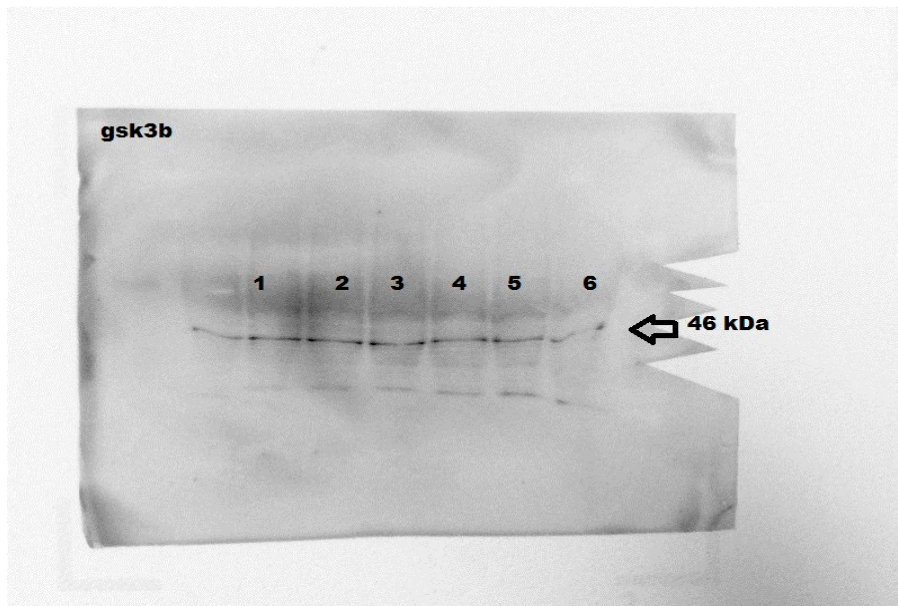
(b)



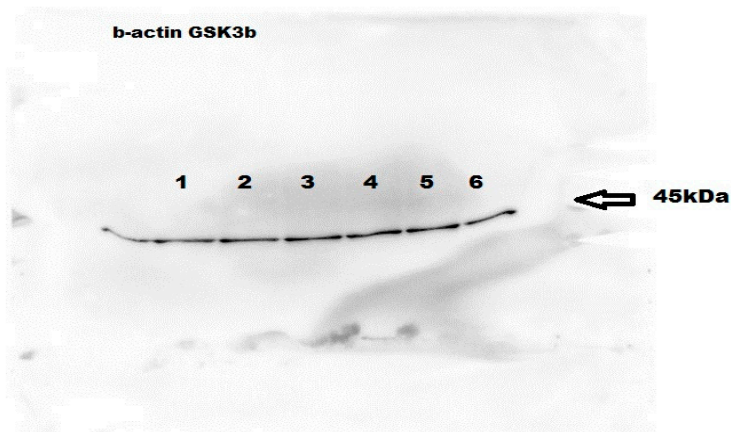
**Figure S1.** Representative image of (a) GLUT1 and (b)  $\beta$ -actin protein expression in MDA-MB-231 cells treated with the indicated concentrations of (2) F3, (3) lutein, (4)  $\beta$ -sitosterol, (5) stigmasterol, and (6) apigenin (positive control), while (1) untreated as a negative control for 24 h.



**Figure S2.** Representative image of TXNIP protein expression in MDA-MB-231 cells treated with the indicated concentrations of (2) F3, (3) lutein, (4)  $\beta$ -sitosterol, and (5) stigmasterol for 24 h. Tamoxifen (6) was used as a positive control, while untreated cells (1) as a negative control.



(a)



(b)

**Figure S3.** Representative image of (a) GSK3 $\beta$  and (b)  $\beta$ -actin protein expression in MDA-MB-231 cells treated with the indicated concentrations of (2) F3, (3) lutein, (4)  $\beta$ -sitosterol, (5) stigmasterol, and (6) tamoxifen (positive control), while (1) untreated as a negative control for 24 h.