

## Supporting Information

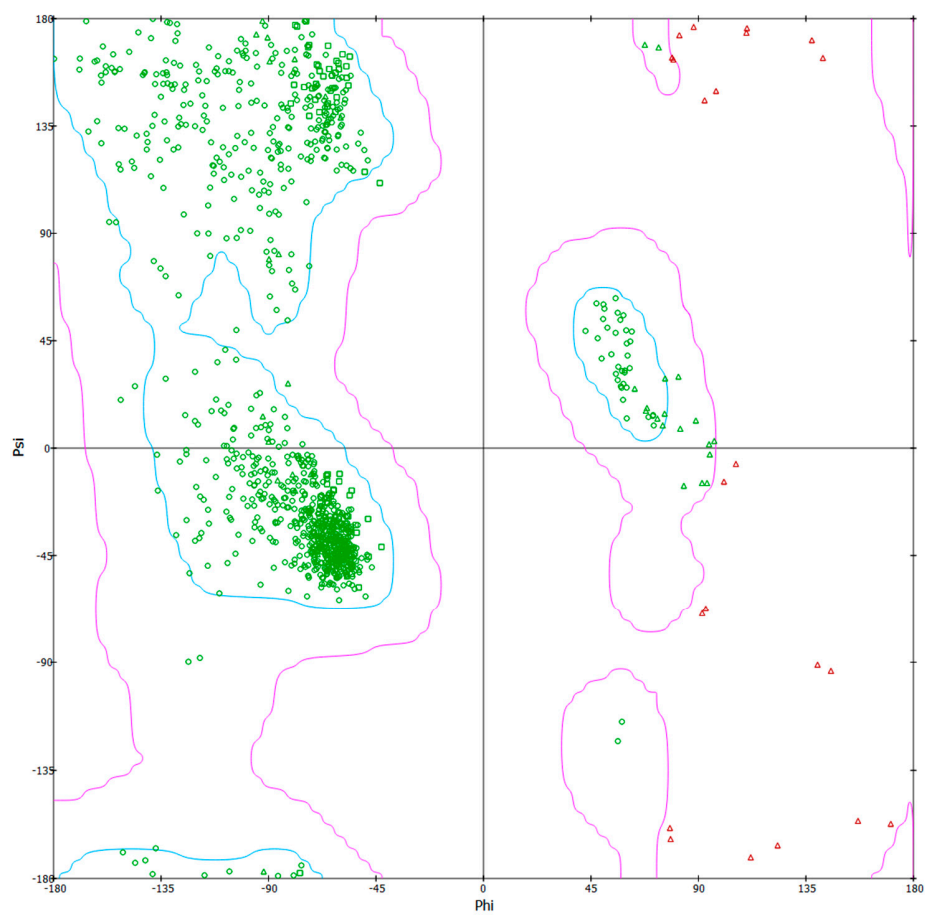


Figure S1. Ramachandran plot of COX-2 protein with PDBID 5KIR.

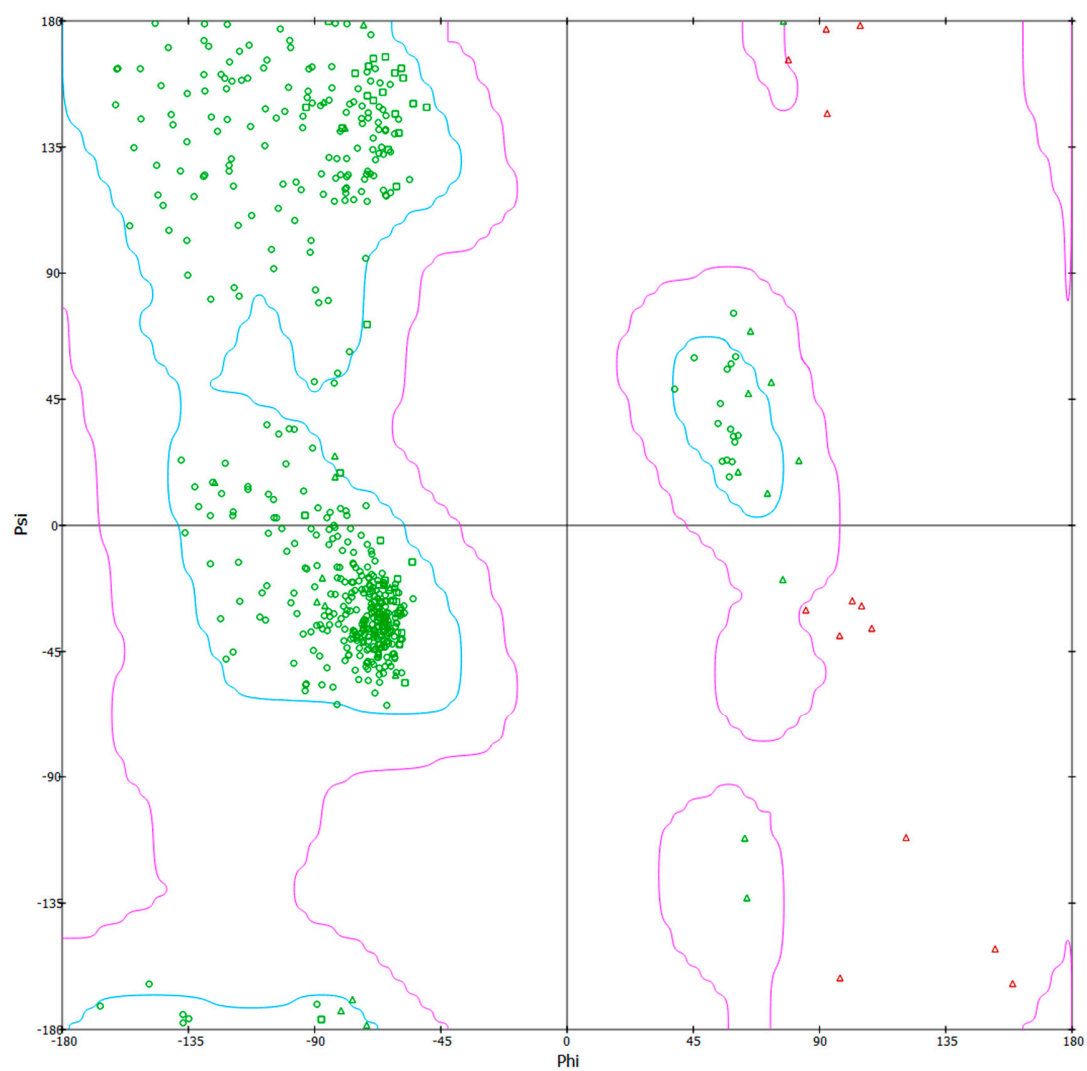


Figure S2. Ramachandran plot of COX-1 protein with PDBID 6Y3C.

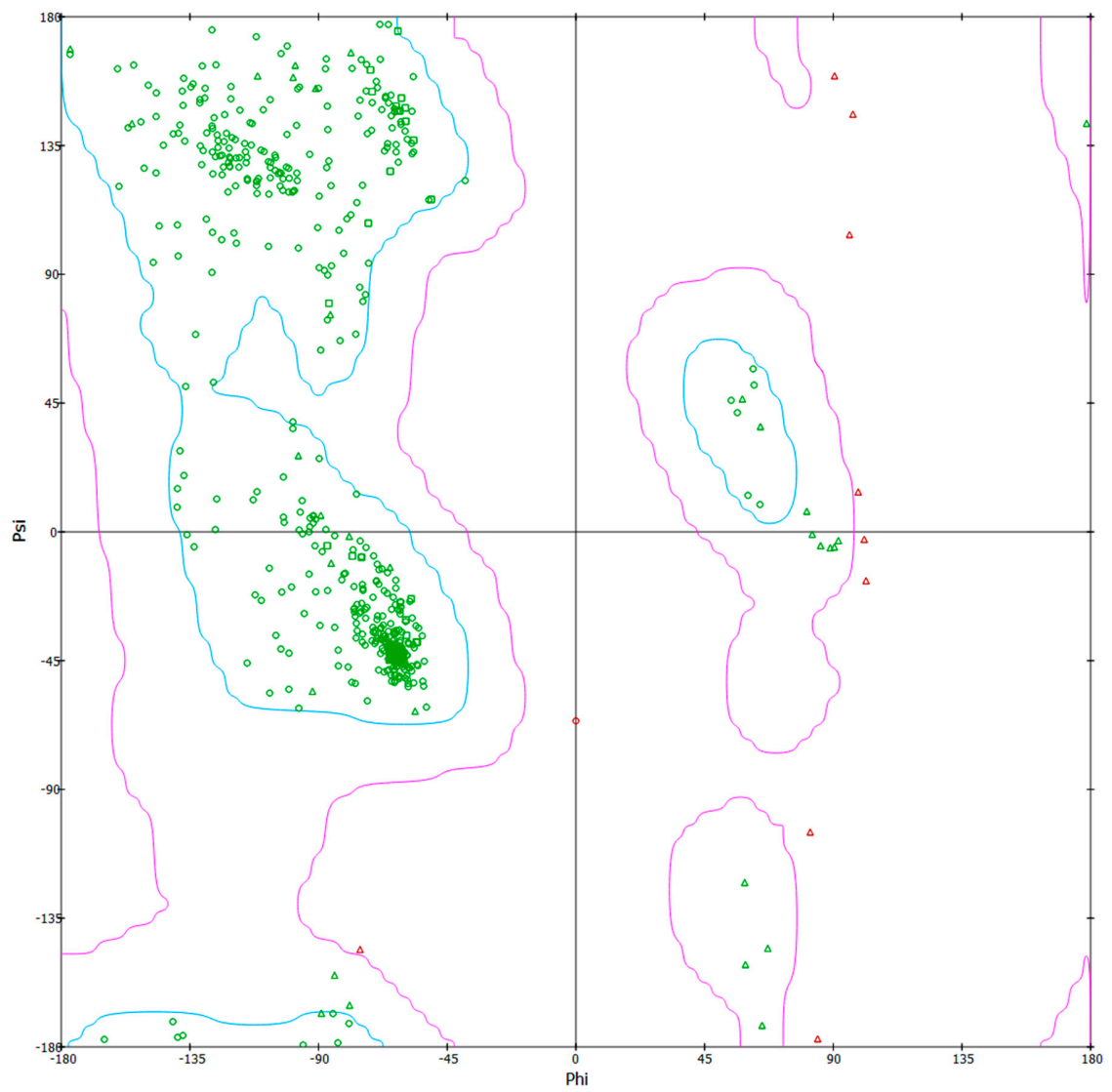
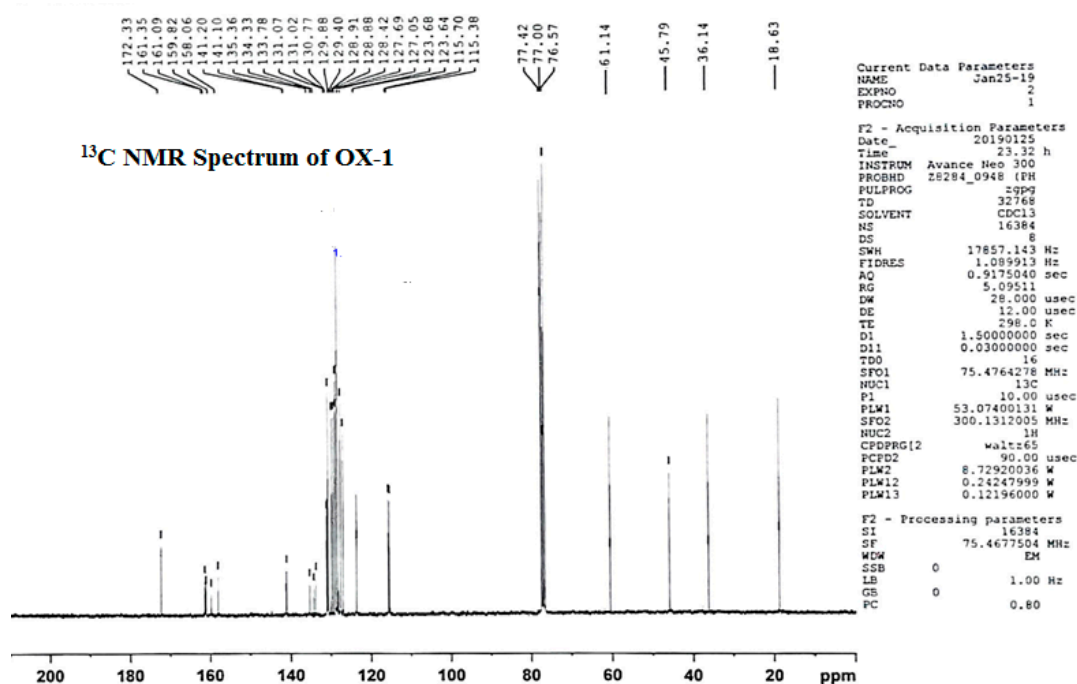
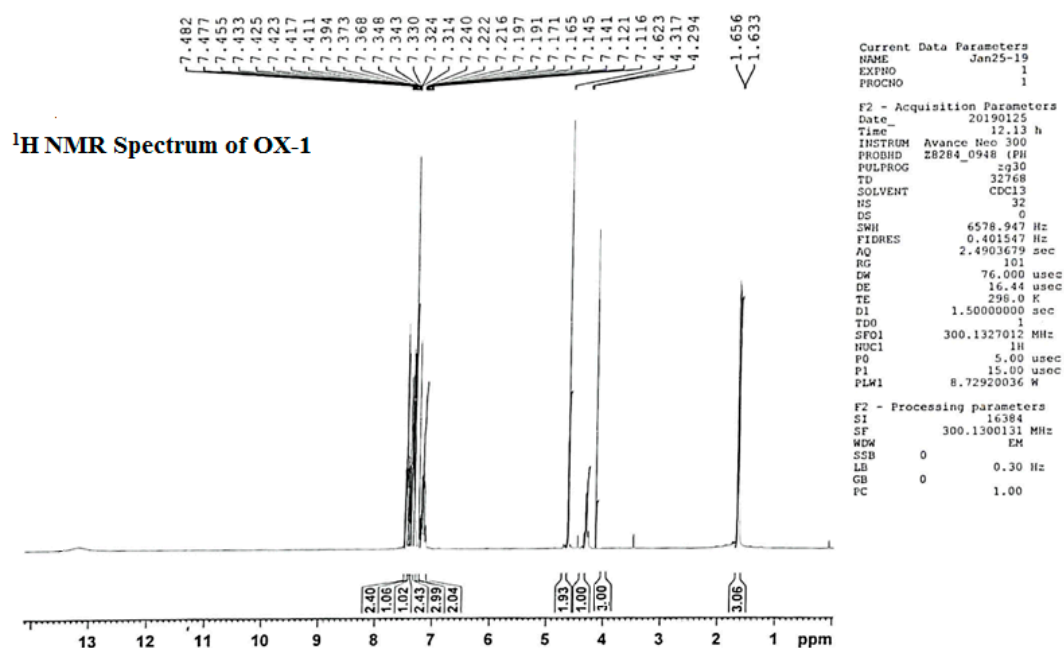
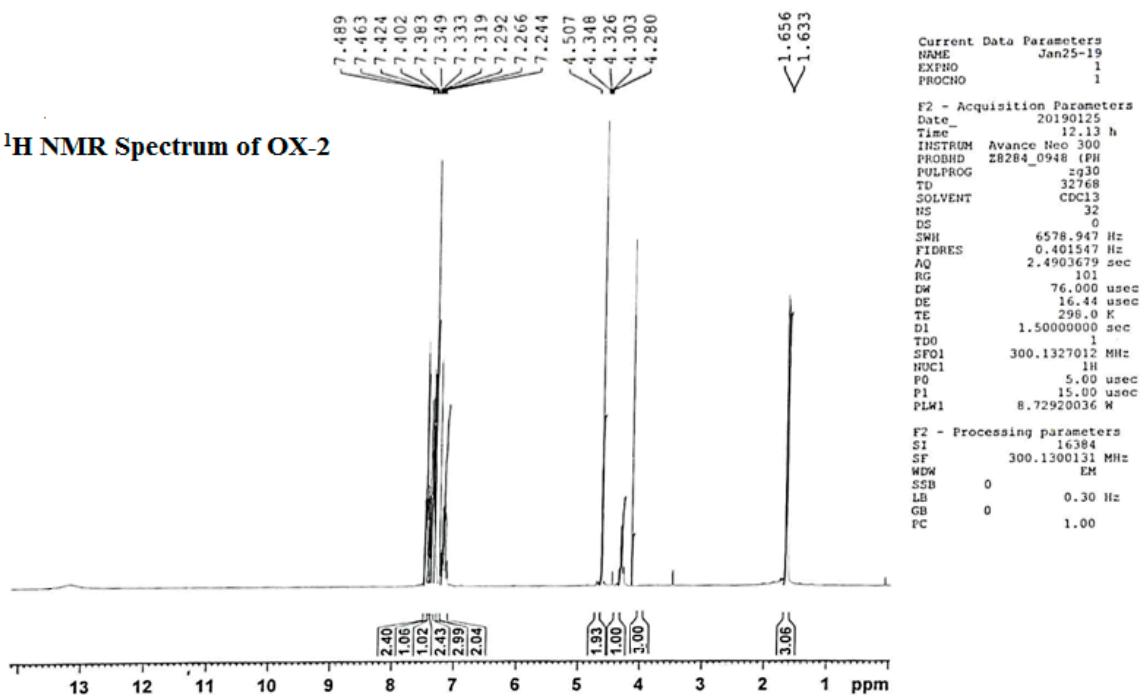


Figure S3. Ramachandran plot of NOX protein with PDBID 7U8G.

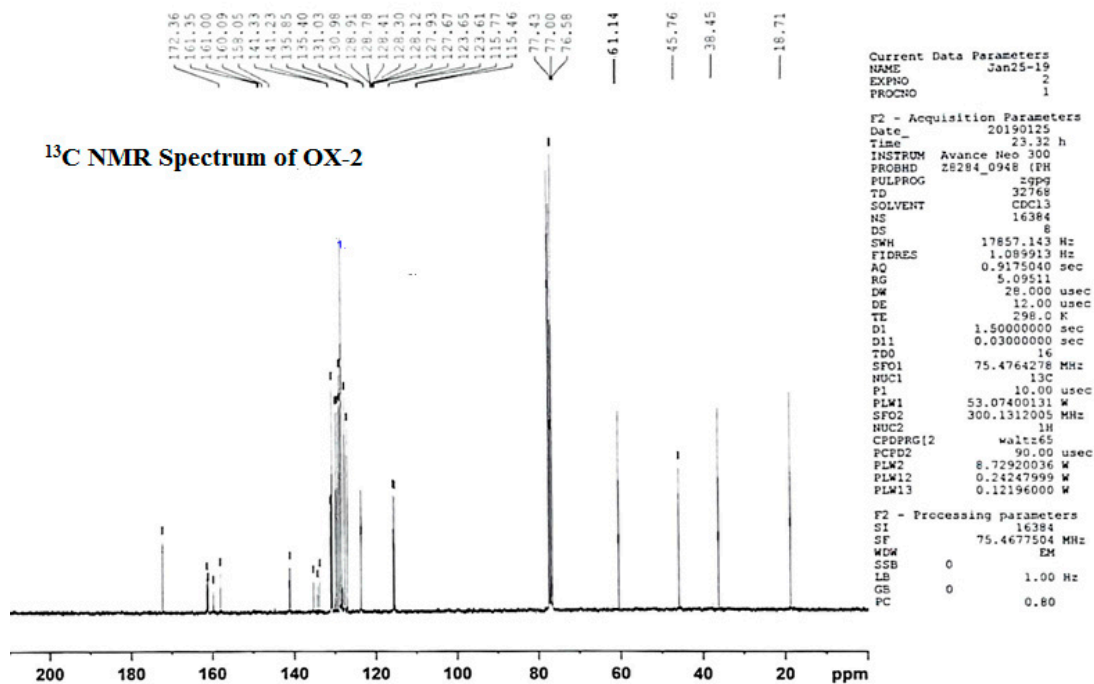
# <sup>1</sup>H and <sup>13</sup>C NMR Spectra of the synthesized compounds Ox-1-Ox-6

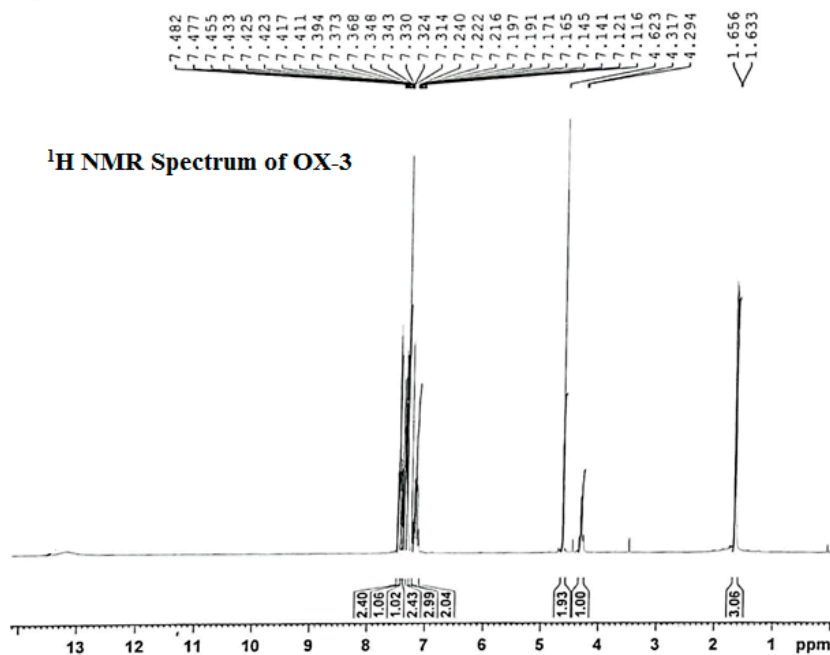


# <sup>1</sup>H NMR Spectrum of OX-2



# <sup>13</sup>C NMR Spectrum of OX-2

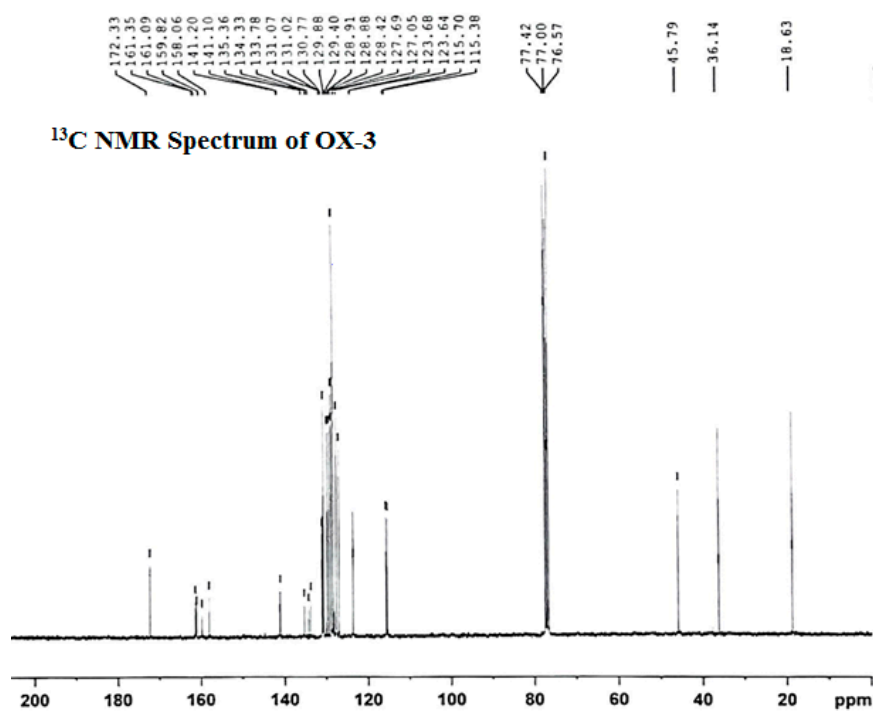




Current Data Parameters  
NAME Jan25-19  
EXPNO 1  
PROCNO 1

F2 - Acquisition Parameters  
Date\_ 20190125  
Time 12.13 h  
INSTRUM Avance Neo 300  
PROBHD Z8284\_0948 (PH  
PULPROG zgpg  
TD 32768  
SOLVENT CDCl3  
NS 32  
DS 0  
SWH 6578.947 Hz  
FIDRES 0.401547 Hz  
AQ 2.4903679 sec  
RG 101  
DW 76.000 usec  
DE 16.44 usec  
TE 298.0 K  
D1 1.50000000 sec  
TDO 1  
SFO1 300.1327012 MHz  
NUC1 1H  
P0 5.00 usec  
P1 15.00 usec  
PLW1 8.72920036 W

F2 - Processing parameters  
SI 16384  
SF 300.1300131 MHz  
WDW EM  
SSB 0  
LB 0.30 Hz  
GB 0  
PC 1.00



Current Data Parameters  
NAME Jan25-19  
EXPNO 2  
PROCNO 1

F2 - Acquisition Parameters  
Date\_ 20190125  
Time 23.32 h  
INSTRUM Avance Neo 300  
PROBHD Z8284\_0948 (PH  
PULPROG zgpg  
TD 32768  
SOLVENT CDCl3  
NS 16384  
DS 8  
SWH 17857.143 Hz  
FIDRES 1.089913 Hz  
AQ 0.9175040 sec  
RG 5.09511  
DW 28.000 usec  
DE 12.00 usec  
TE 298.0 K  
D1 1.50000000 sec  
D11 0.03000000 sec  
TDO 16  
SFO1 75.4764278 MHz  
NUC1 13C  
P1 10.00 usec  
PLW1 53.07400131 W  
SFO2 300.1312005 MHz  
NUC2 1H  
CPDPRG2 waltz-65  
PCPD2 90.00 usec  
PLW2 8.72920036 W  
PLW12 0.24247999 W  
PLW13 0.12196000 W

F2 - Processing parameters  
SI 16384  
SF 75.4677504 MHz  
WDW EM  
SSB 0  
LB 1.00 Hz  
GB 0  
PC 0.80

