

Supplementary Material for

Ultrasound-Assisted Solid-Phase Affibody Synthesis using Z_{EGFR:1907} as an Example — Superior to the Conventional Protocol?

Marie Prochiner^{1,2}, Benedikt Judmann^{1,2}, Alina Ruder^{1,2}, Björn Wängler^{2,3}, Ralf Schirmmacher⁴ and Carmen Wängler^{1,2,*}

¹ Biomedical Chemistry, Clinic of Radiology and Nuclear Medicine, Medical Faculty Mannheim, Heidelberg University, Theodor-Kutzer-Ufer 1-3, 68167 Mannheim, Germany; marie.prochiner@stud.uni-heidelberg.de (M.P.); benedikt.judmann@medma.uni-heidelberg.de (B.J.); ruderal102168@th-nuernberg.de (A.R.)

² Research Campus M²OLIE, Medical Faculty Mannheim, Heidelberg University, Theodor-Kutzer-Ufer 1-3, 68167 Mannheim, Germany;

³ Molecular Imaging and Radiochemistry, Clinic of Radiology and Nuclear Medicine, Medical Faculty Mannheim, Heidelberg University, Theodor-Kutzer-Ufer 1-3, 68167 Mannheim, Germany; bjoern.waengler@medma.uni-heidelberg.de (B.W.)

⁴ Division of Oncological Imaging, Department of Oncology, University of Alberta, Edmonton, AB T6G 1Z2, Canada; schirrma@ualberta.ca (R.S.)

* Correspondence: carmen.waengler@medma.uni-heidelberg.de

Content:

Fig. S1: Direct comparison of HPLC chromatograms of affibody raw product mixtures obtained applying a Sieber TG resin as the solid support at the stage of 55 amino acids using conventional mechanical agitation or ultrasonication. page 2

Representative MALDI-MS, HR-ESI-MS and HR-MALDI spectra of peptide fragments **1** – **5** and the complete affibody peptide sequence **6**. page 2

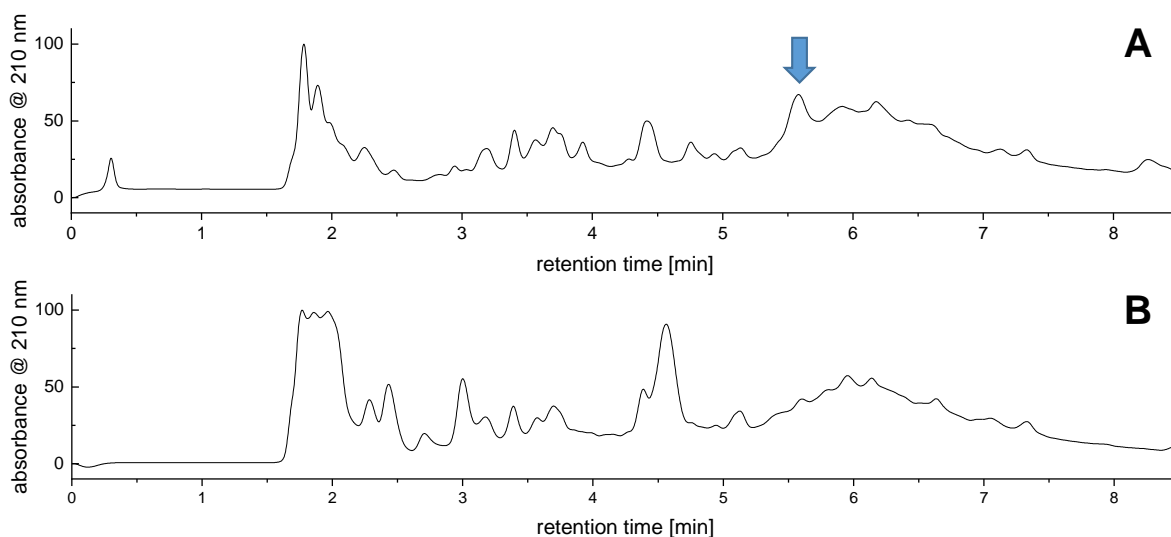
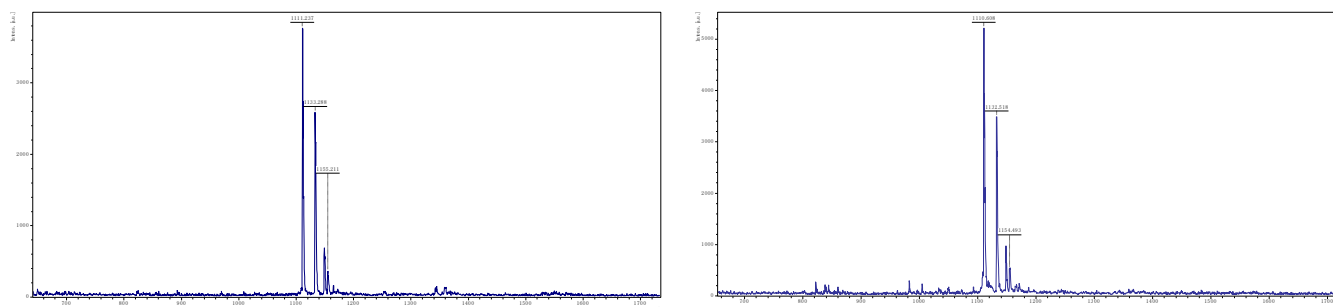


Fig. S1: Direct comparison of HPLC chromatograms of affibody raw product mixtures obtained applying a Sieber TG resin as the solid support at the stage of 55 amino acids using conventional mechanical agitation (**A**) or ultrasonication (**B**) otherwise applying analogous reaction conditions. The analyses were carried out using a gradient of 20 – 60% MeCN over 8 min on a Chromolith SemiPrep (RP-18e, 100-10 mm) column. The intended product was found for the peak marked with the arrow.

Representative MALDI-MS, HR-ESI-MS and HR-MALDI spectra of peptide fragments **1** – **5** and the complete affibody peptide sequence **6**.

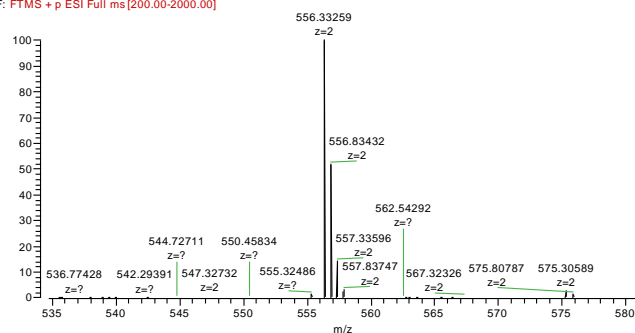
Fragment 1

MALDI

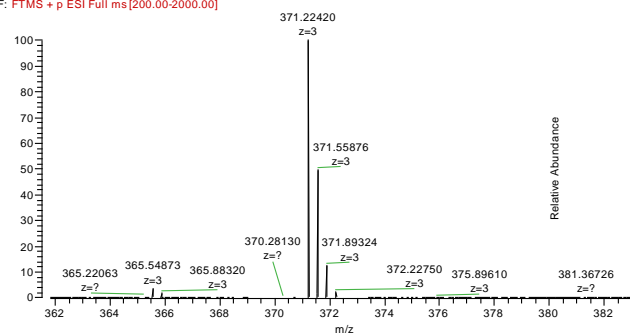


HR-ESI

05-mp3.1+ #42-308 RT: 0.60-2.98 AV: 33 NL: 2.04E6
F: FTMS + p ESI Full ms [200.00-2000.00]

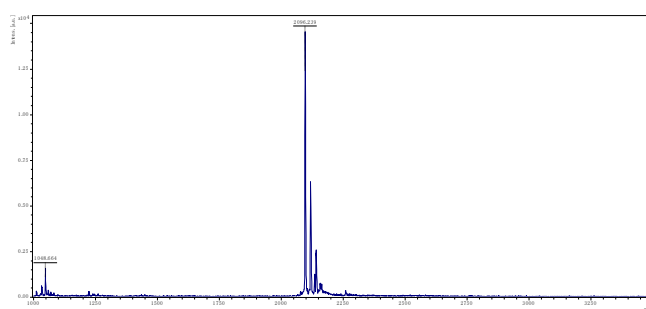
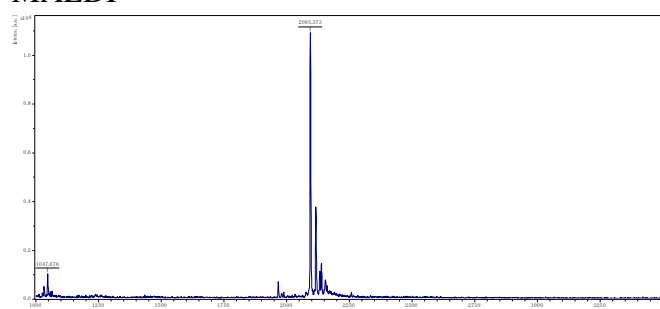


05-mp3.1+ #40-309 RT: 0.50-2.98 AV: 34 NL: 2.13E6
F: FTMS + p ESI Full ms [200.00-2000.00]



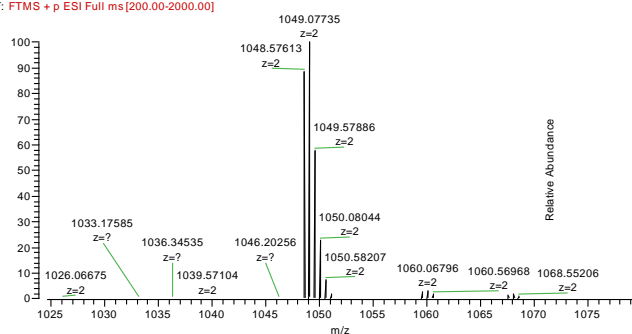
Fragment 2

MALDI

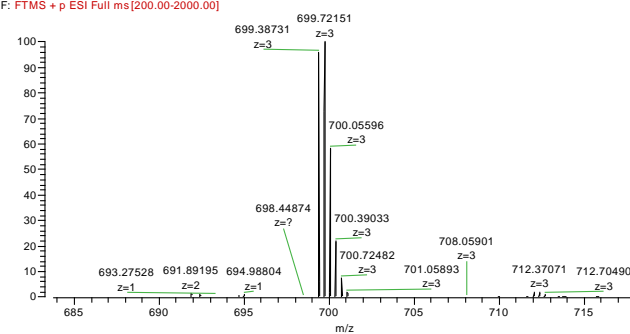


HR-ESI

05-mp3,2+ #40-307 RT: 0.50-3.03 AV: 34 NL: 4.68E6
F: FTMS + p ESI Full ms[200.00-2000.00]

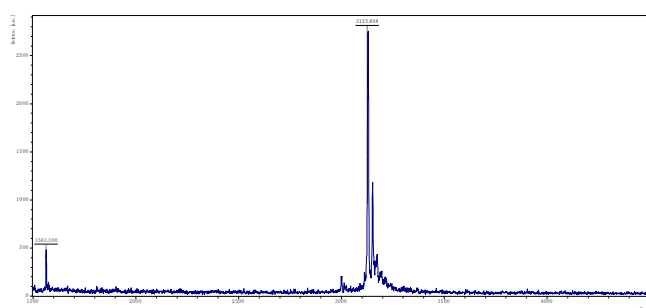
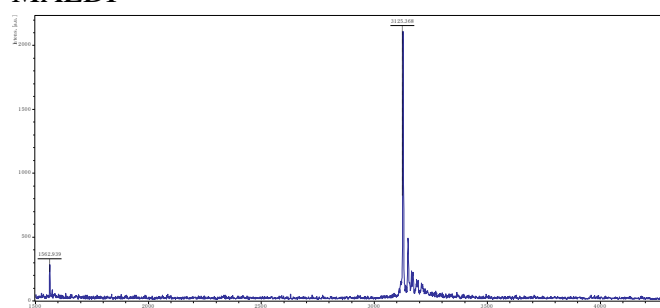


05-mp3,2+ #42-303 RT: 0.60-2.95 AV: 32 NL: 2.19E6
F: FTMS + p ESI Full ms[200.00-2000.00]



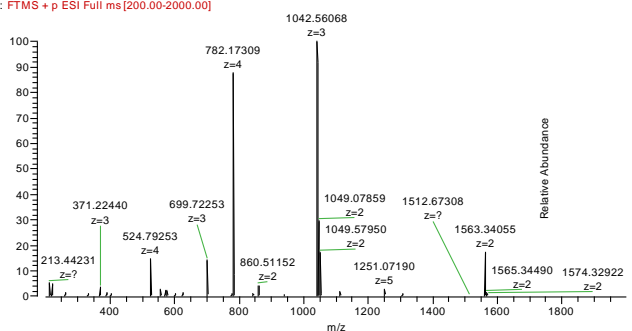
Fragment 3

MALDI

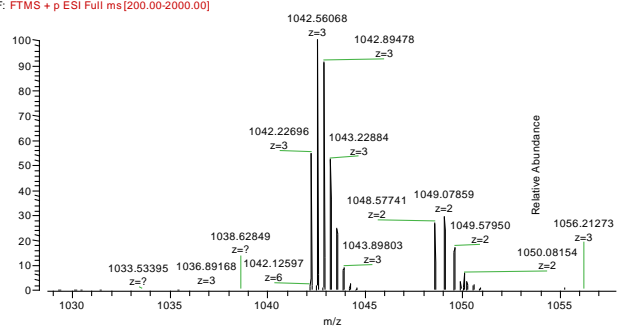


HR-ESI

05-mp4,3+ #38-276 RT: 0.52-3.02 AV: 30 NL: 2.28E6
F: FTMS + p ESI Full ms[200.00-2000.00]

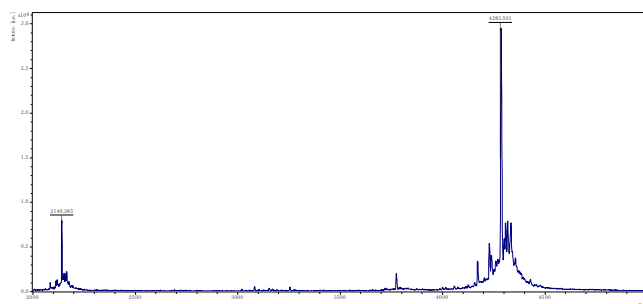
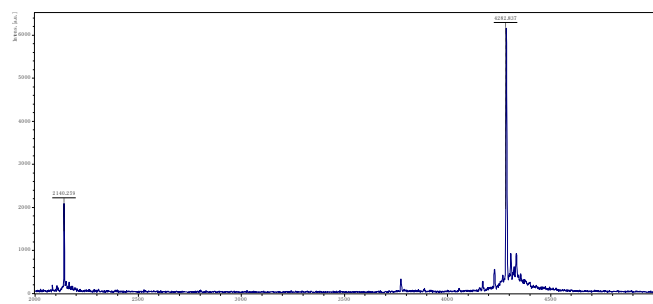


05-mp4,3+ #38-276 RT: 0.52-3.02 AV: 30 NL: 2.28E6
F: FTMS + p ESI Full ms[200.00-2000.00]



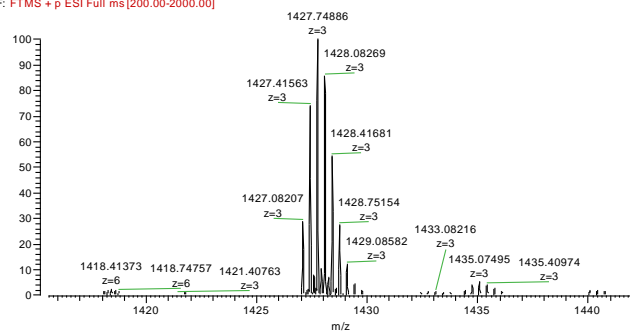
Fragment 4

MALDI

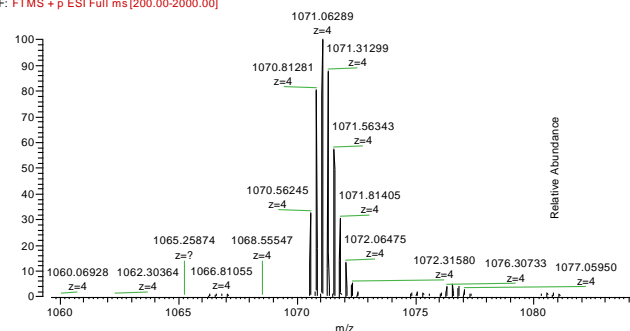


HR-ESI

05-mp3.4+ #41-265 RT: 0.51-3.01 AV: 29 NL: 5.91E5
F: FTMS + p ESI Full ms [200.00-2000.00]

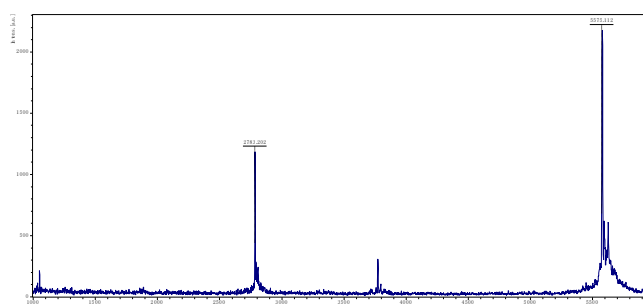
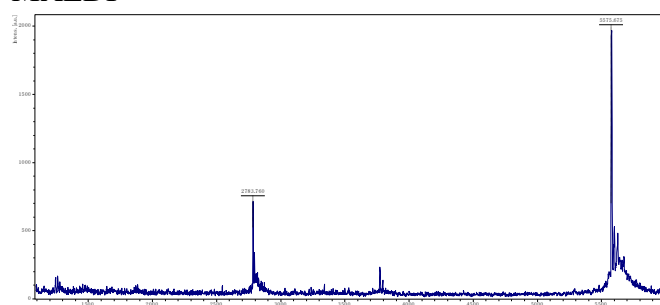


05-mp3.4+ #38-269 RT: 0.51-3.01 AV: 29 NL: 1.29E6
F: FTMS + p ESI Full ms [200.00-2000.00]



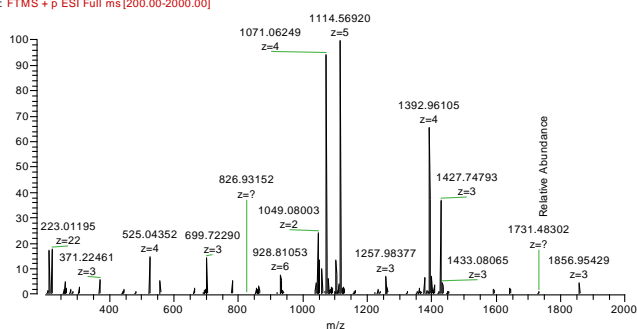
Fragment 5

MALDI

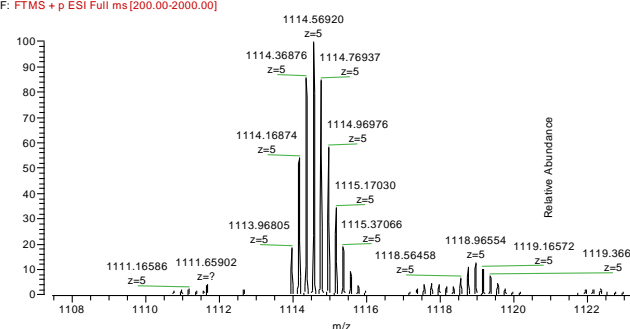


HR-ESI

05-mp3.5+ #39-265 RT: 0.51-3.04 AV: 29 NL: 3.20E5
F: FTMS + p ESI Full ms [200.00-2000.00]

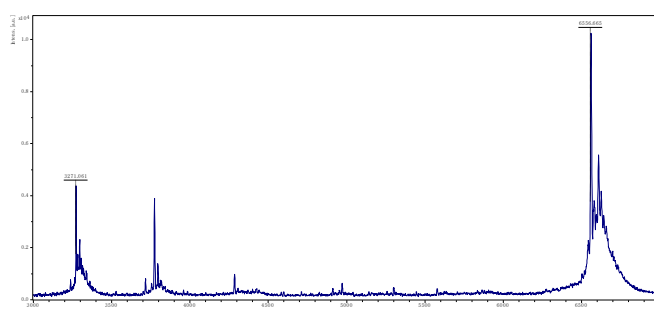
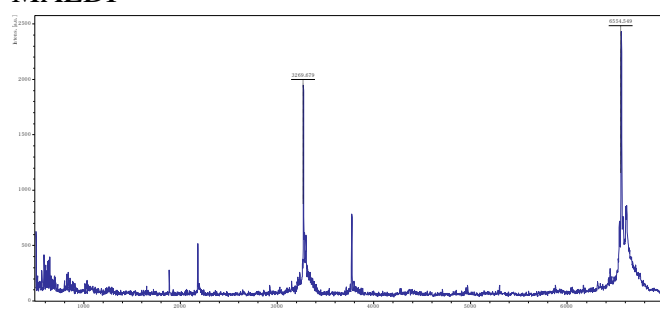


05-mp3.5+ #39-265 RT: 0.51-3.04 AV: 29 NL: 3.20E5
F: FTMS + p ESI Full ms [200.00-2000.00]



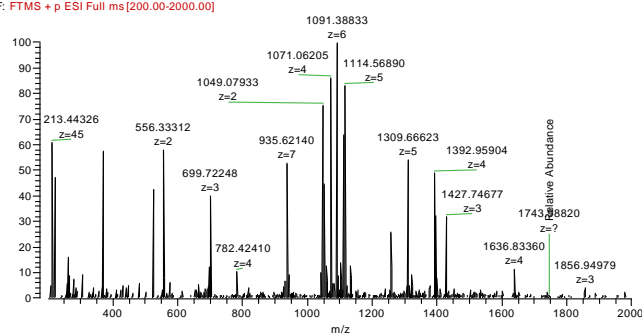
Full-length affibody 6

MALDI

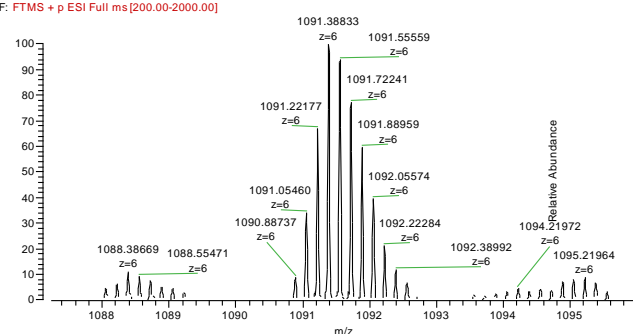


HR-ESI

05-mp4.E+ #40-270 RT: 0.50-2.97 AV: 29 NL: 8.64E4
F: FTMS + p ESI Full ms[200.00-2000.00]



05-mp4.E+ #40-270 RT: 0.50-2.97 AV: 29 NL: 8.64E4
F: FTMS + p ESI Full ms[200.00-2000.00]



HR-MALDI

