

Supplementary material:

## Improving the dissolution rate and bioavailability of curcumin via Co-crystallization

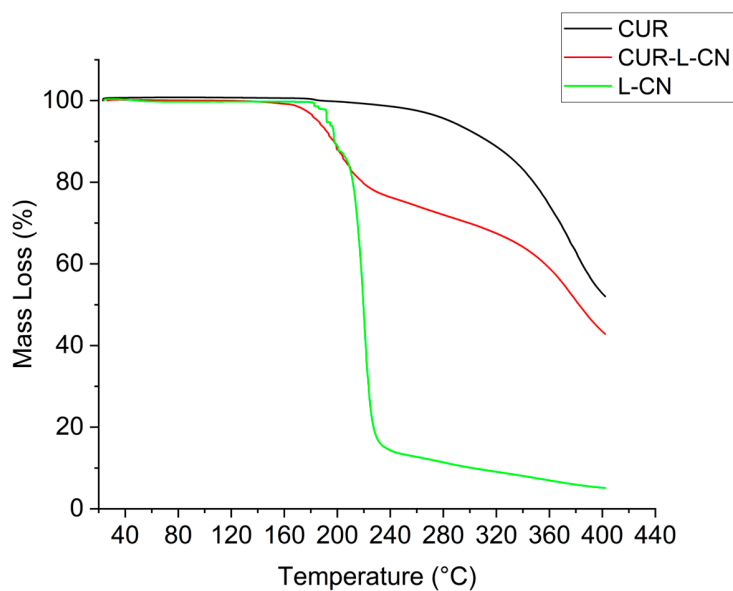


Figure S1. TGA plots of CUR, L-CN, and CUR-L-CN.

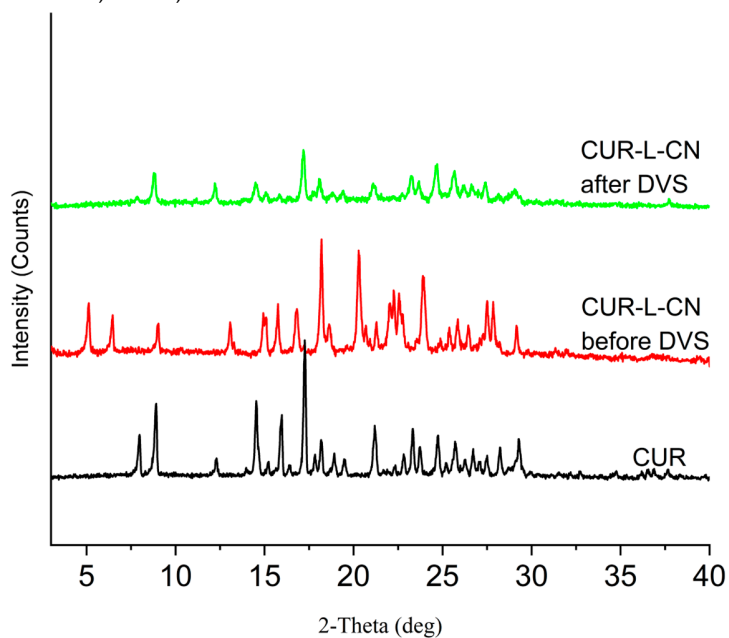
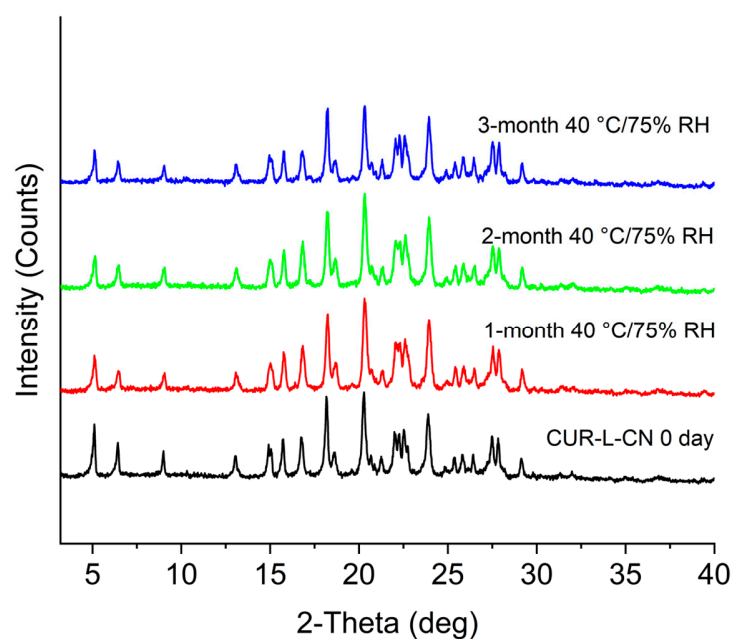
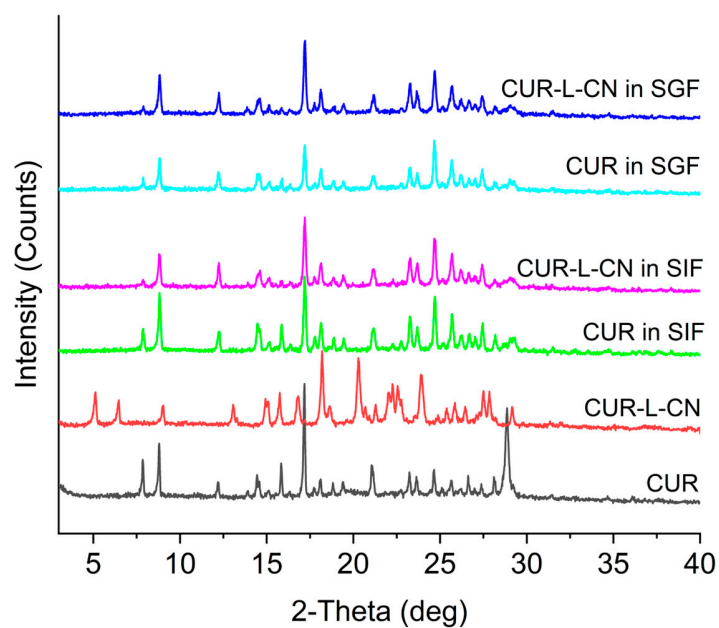


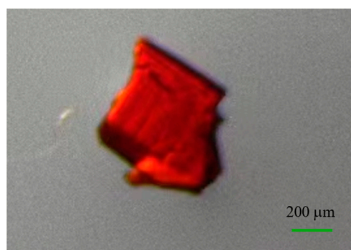
Figure S2. PXRD patterns of CUR-L-CN. after DVS experiment.



**Figure S3.** PXRD patterns of CUR-L-CN after stored under 40°C, 75%RH condition for 0, 1, 2, and 3 months.



**Figure S4.** PXRD patterns of residual powders after dissolution experiments.



**Figure S5.** Single crystal of CUR.