

Supporting information

1. Results and discussion

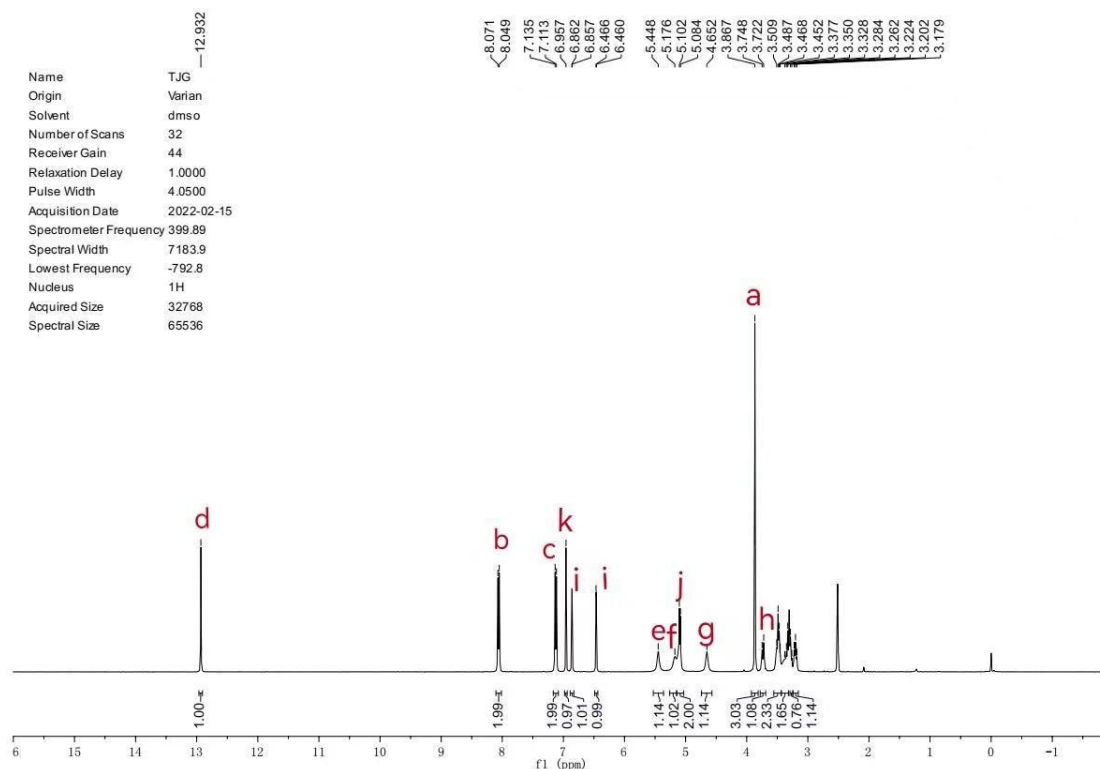


Figure S1. The ^1H NMR detection profile of tilianin.

In ^1H NMR spectra (Figure S1), a denotes H on the methyl group, b, c, k and i represent hydrogen atoms from the benzene ring, d denotes H from phenolic hydroxyl group. The e, f, g, h and j represent H from the sugar group. The specific peak position and integration proves the chemical structure of Til.