

Supplemental Data

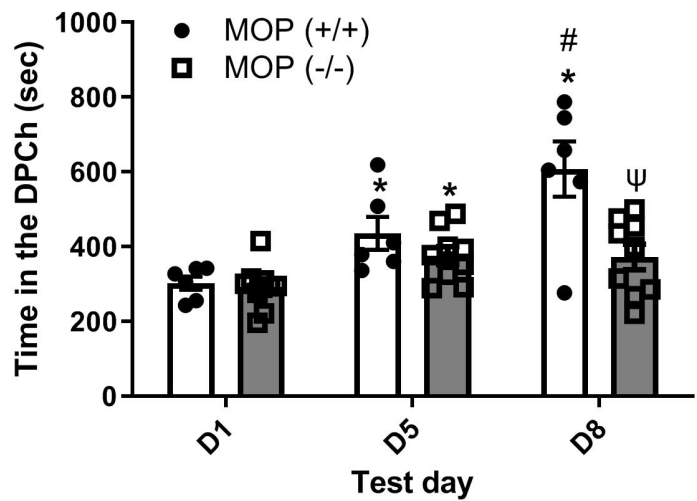


Figure S1: Ethanol CPP (D5) and crosstalk (D8) between morphine and ethanol in mice lacking MOP and their wild-type controls

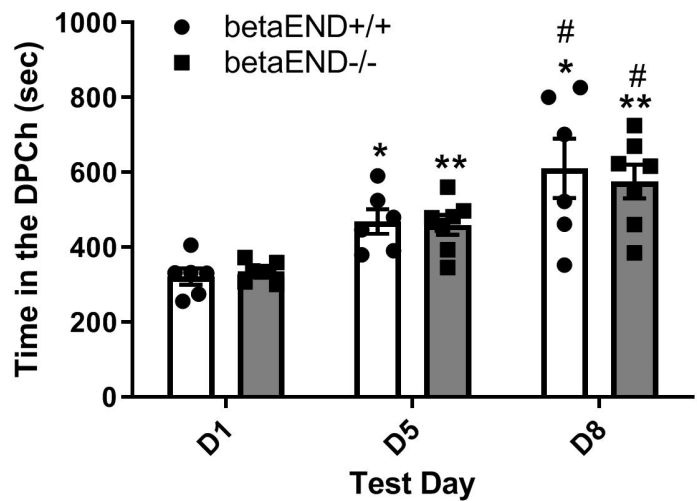


Figure S2: Ethanol CPP (D5) and crosstalk (D8) between morphine and ethanol in mice lacking beta-endorphin and their wildtype controls

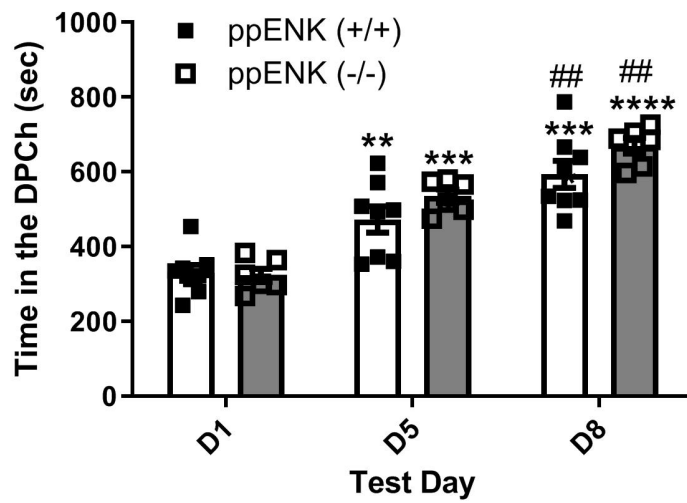


Figure S3: Ethanol CPP (D5) and crosstalk (D8) between morphine and ethanol in mice lacking the *ppENK* gene and their wildtype controls

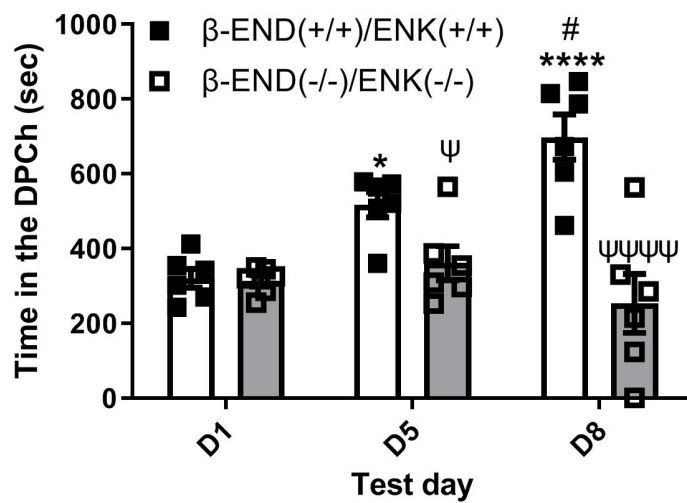


Figure S4: Ethanol CPP (D5) and crosstalk (D8) between morphine and ethanol in mice lacking both beta-endorphin and enkephalins and their wildtype controls