

**Table S1.** PK parameters

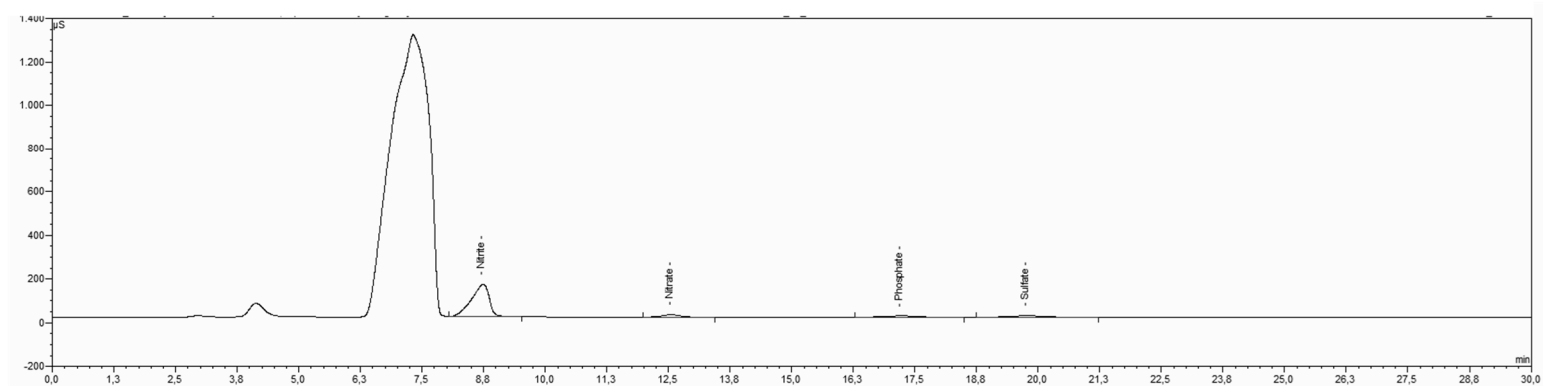
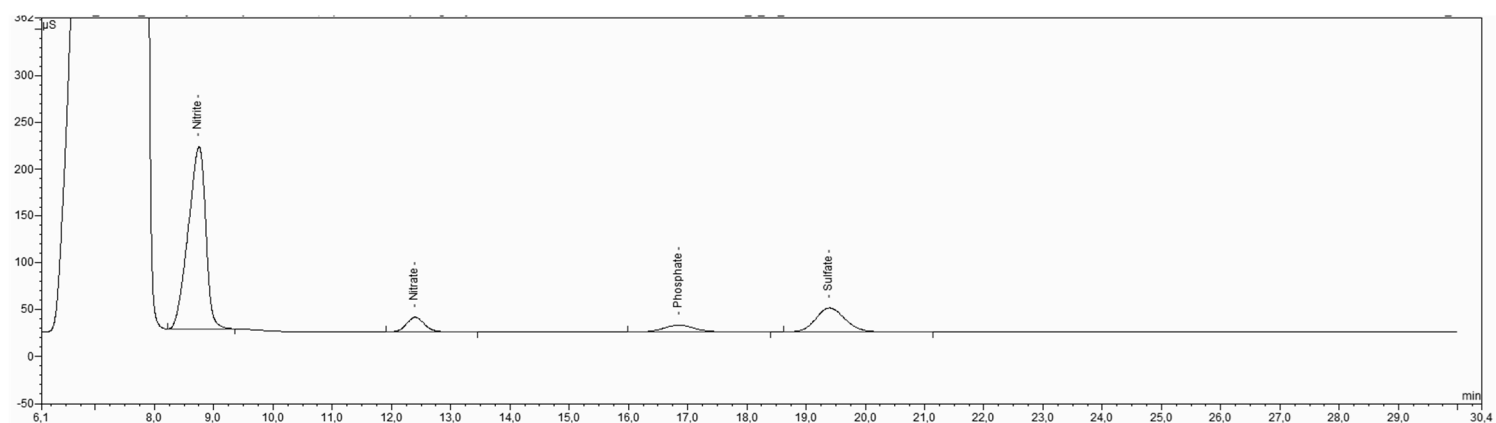
		Nitrite		
		<i>T</i> 1/2	<i>T</i> max	<i>C</i> max
<b>DMEM</b>	Vol 5	Missing	4320	13.51162665
	min 5			
	Vol 2	1816,050	5	74.695
	Min 5			
	Vol 5	425,431	1440	37.861
	Min 10			
	Vol 2	1547.857	10	186.368
	Min 10			
<b>McCOY</b>	Vol 5	6523.652	20	128.487
	Min 20			
	Vol 2	Missing	2880	273.841
	Min 20			
	Vol 5	1843.281	5	33.386
	min 5			
	Vol 2	1405.518	5	83.925
	Min 5			
<b>DMEM</b>	Vol 5	Missing	10	0.217
	Min 10			
	Vol 2	Missing	2880	19.666
	Min 10			
	Vol 5	6470,349	20	140.242
	Min 20			
	Vol 2	Missing	2880	202.441
	Min 20			

		Nitrate		
		<i>T</i> 1/2	<i>T</i> max	<i>C</i> max
<b>DMEM</b>	Vol 5	697.670	5	107.457
	min 5			
	Vol 2	Missing	1440	10.834
	Min 5			
	Vol 5	Missing	0	0.245
	Min 10			
	Vol 2	Missing	2880	47.273
	Min 10			
<b>McCOY</b>	Vol 5	5110.991	20	82.478
	Min 20			
	Vol 2	1012.867	20	113.716
	Min 20			
	Vol 5	975.842	5	34.402
	min 5			
	Vol 2	1355.631	5	22.959
	Min 5			
<b>DMEM</b>	Vol 5	132840.137	10	1.115
	Min 10			
	Vol 2	Missing	4320	44.165
	Min 10			
	Vol 5	2569.699	20	99.226
	Min 20			
	Vol 2	Missing	2880	58.961
	Min 20			

	Min 20			
<b>RPMI</b>	Vol 5	672.635	1440	0.239
	min 5			
	Vol 2	Missing	1440	6.313
	Min 5			
	Vol 5	2976.537	1440	3.877
	Min 10			
	Vol 2	Missing	1440	6.104
	Min 10			
	Vol 5	Missing	20	0.032
	Min 20			
	Vol 2	876.807	1440	8.491
	Min 20			

<b>RPMI</b>	Vol 5	Missing	1440	61.231
	min 5			
	Vol 2	1103.839	5	64.033
	Min 5			
	Vol 5	718.449	0	59.953
	Min 10			
	Vol 2	Missing	4320	95.681
	Min 10			
	Vol 5	1945.511	0	59.953
	Min 20			
	Vol 2	missing	4320	95.666
	Min 20			

In figure S1 is reported two chromatograms obtained from DMEM analysis at 24 and 72 hours. It's evident that areas and concentration have decreased during time.



**Figure S1:** Chromatograms of DMEM at 24 and 72 hours.