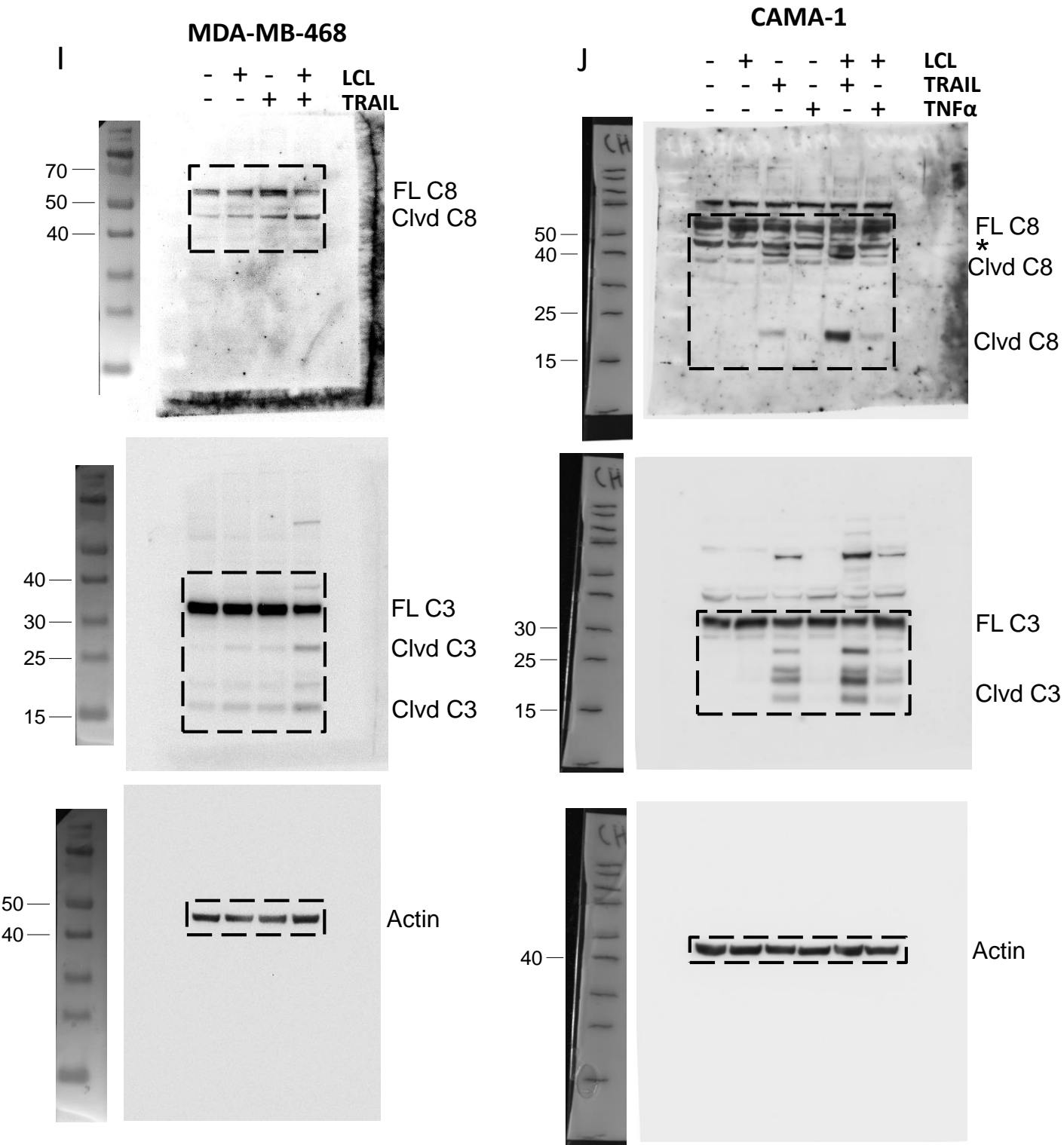
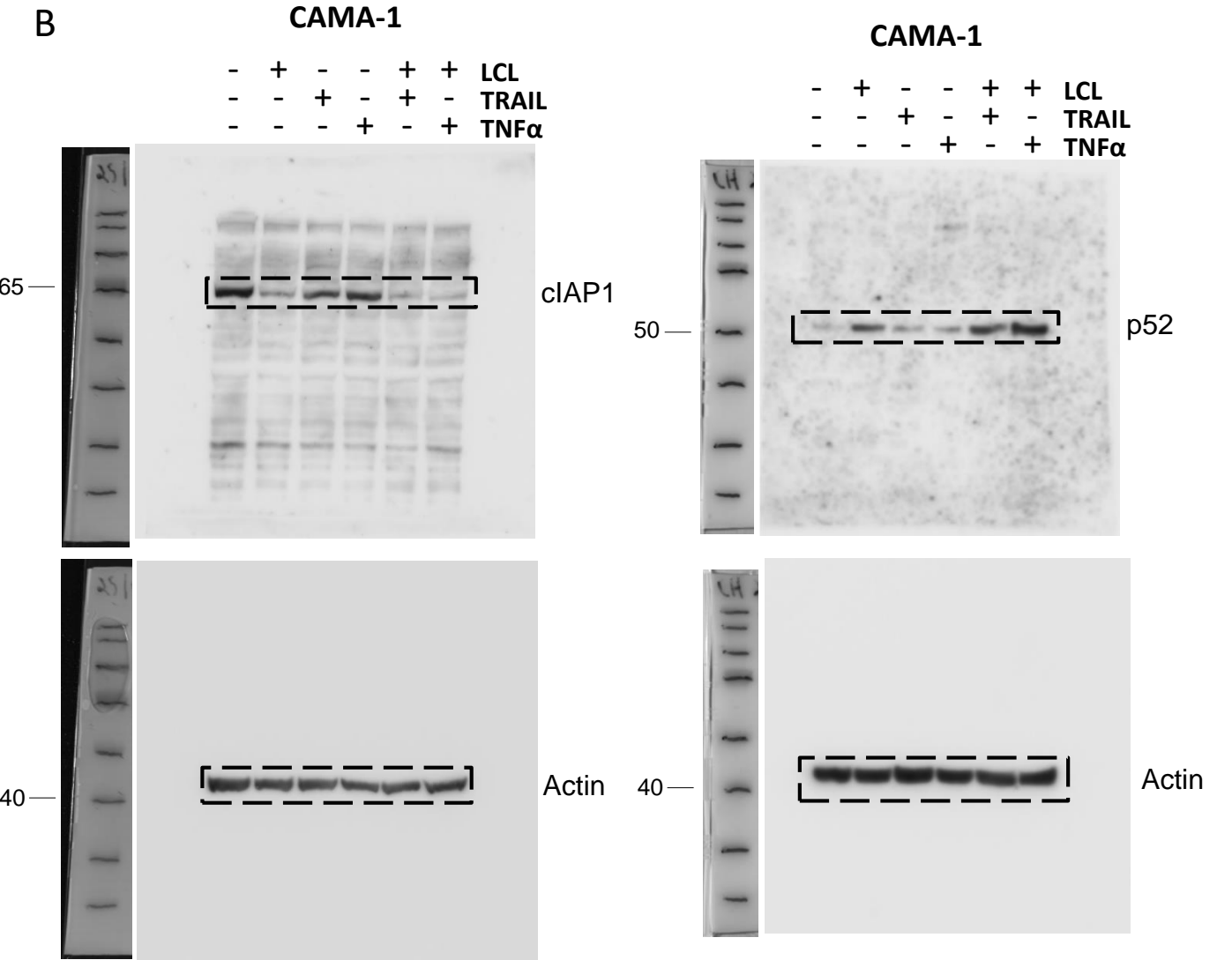


Full-length blots from Figure 1

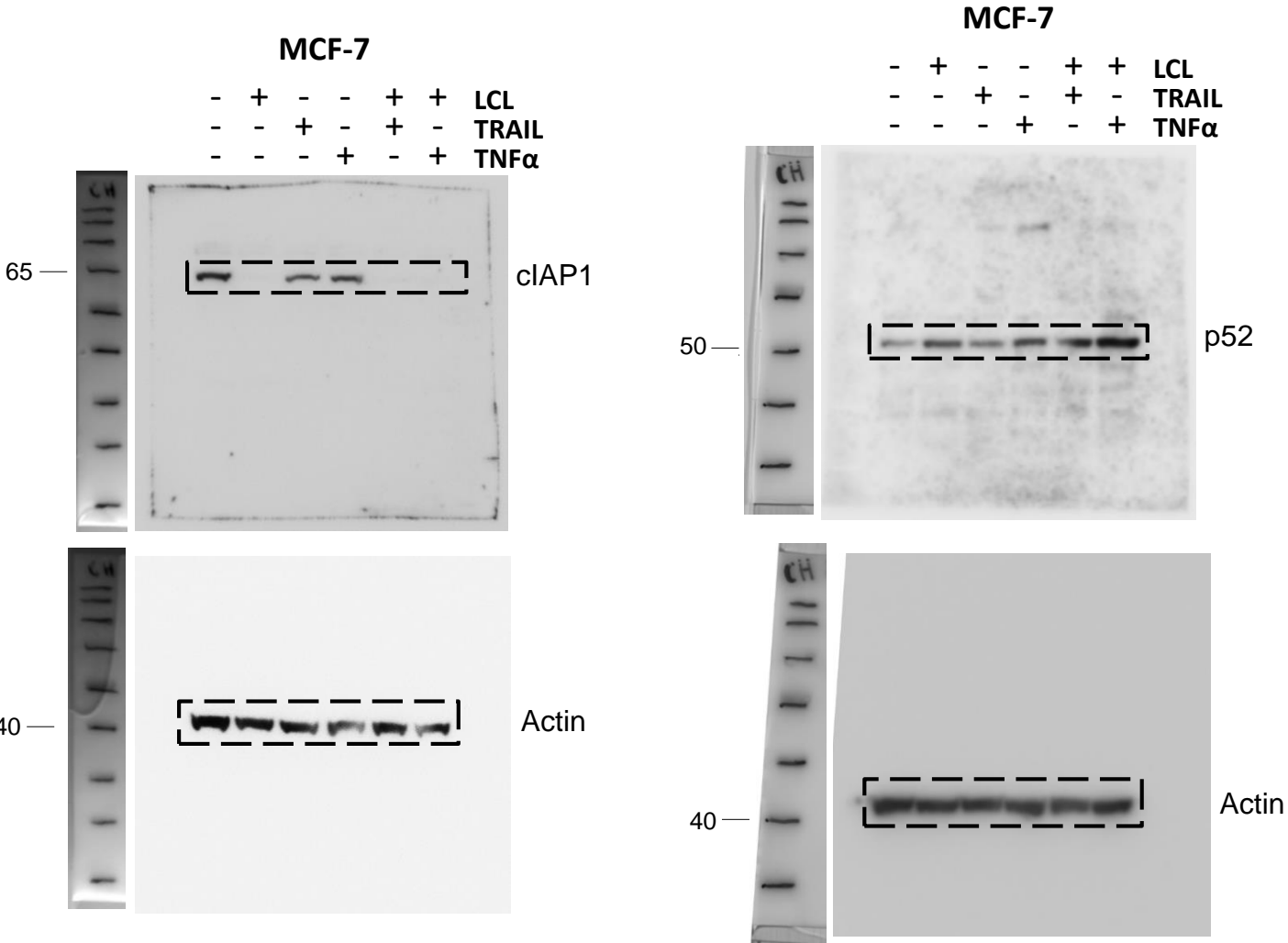


Full-length blots from Figure 2

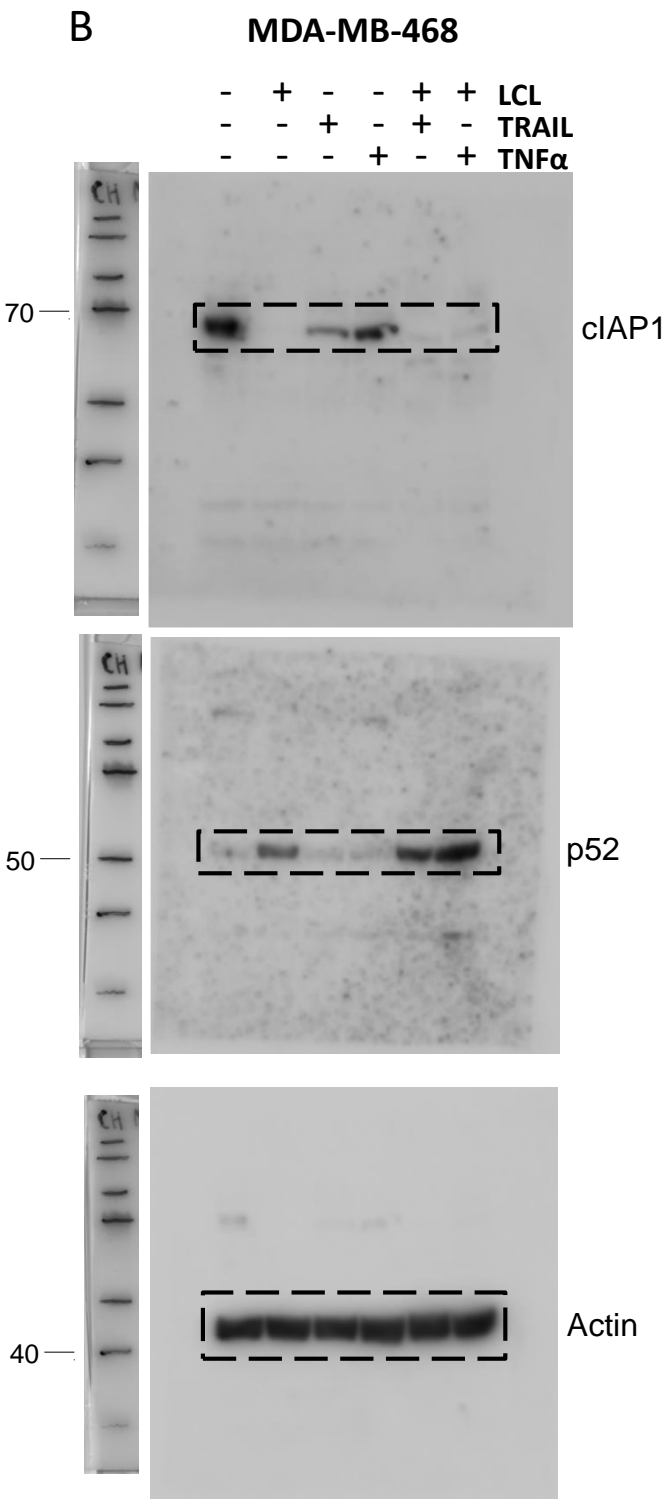


Full-length blots from Figure 2 continued

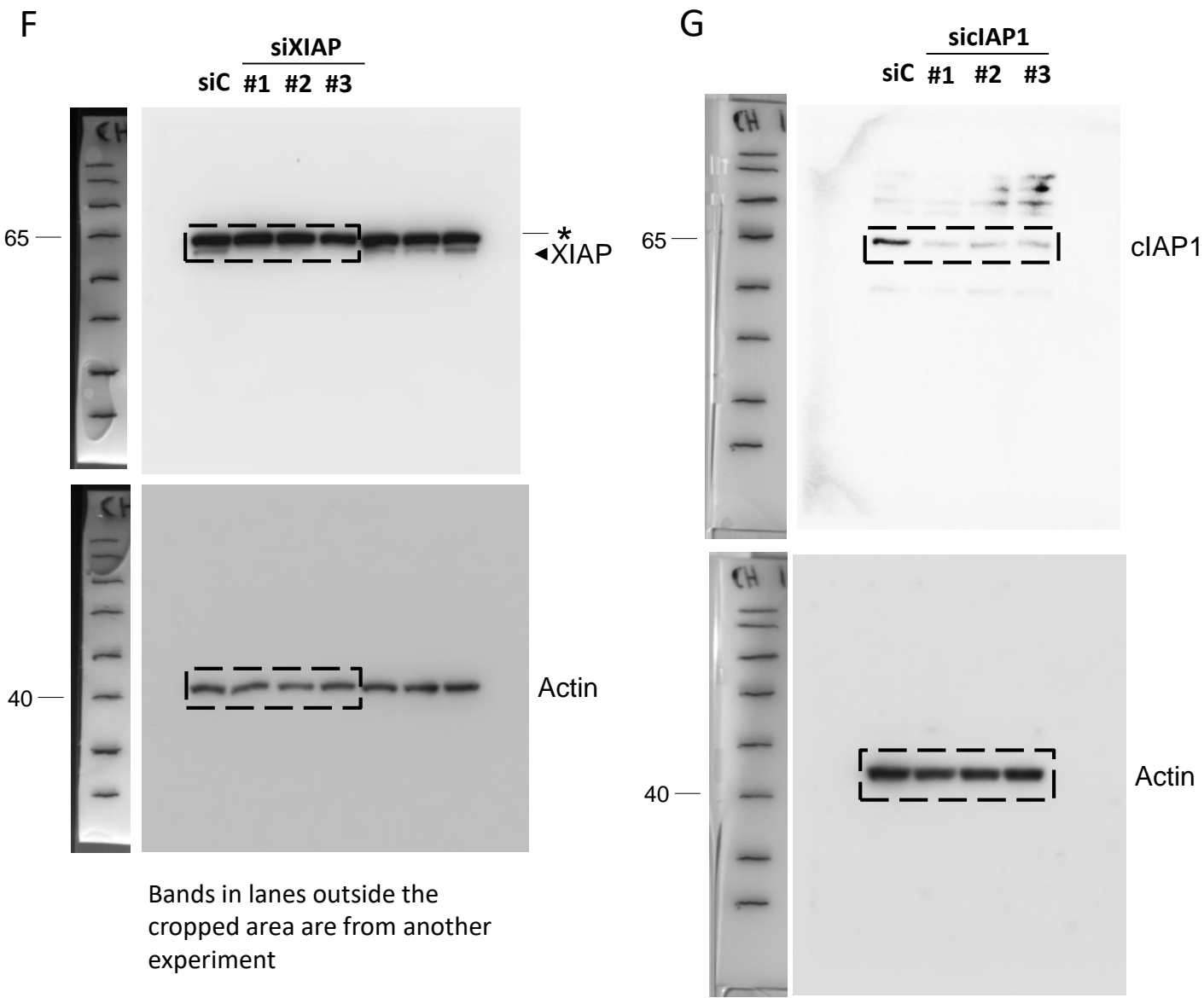
B



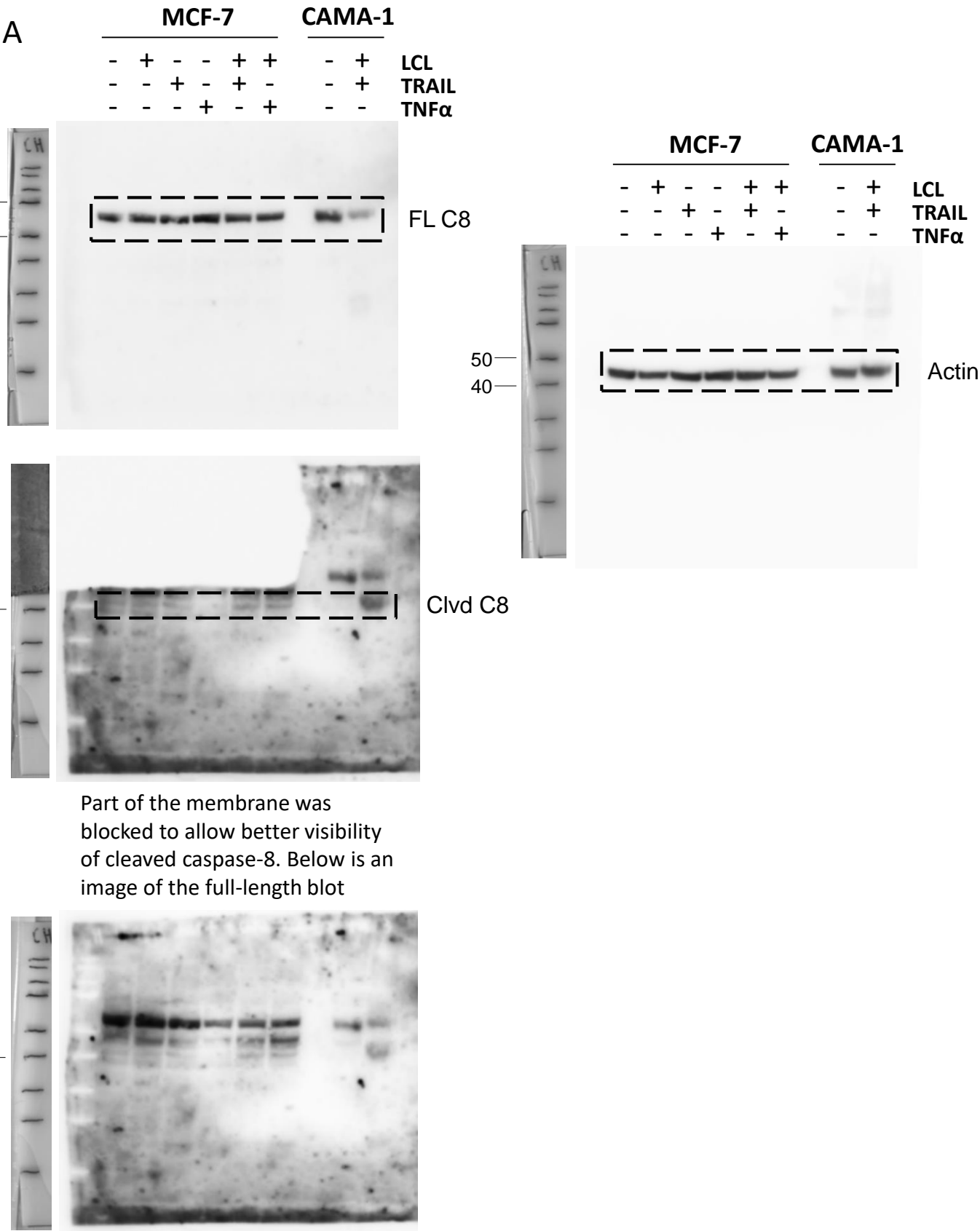
Full-length blots from Figure 2 continued



Full-length blots from Figure 2 continued



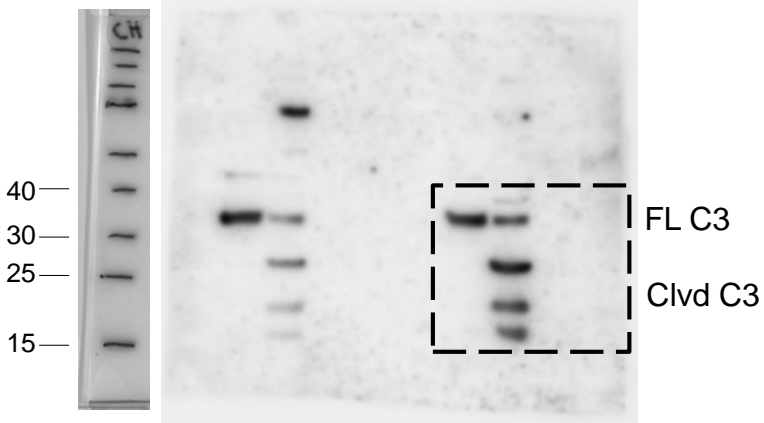
Full-length blots from Figure 3



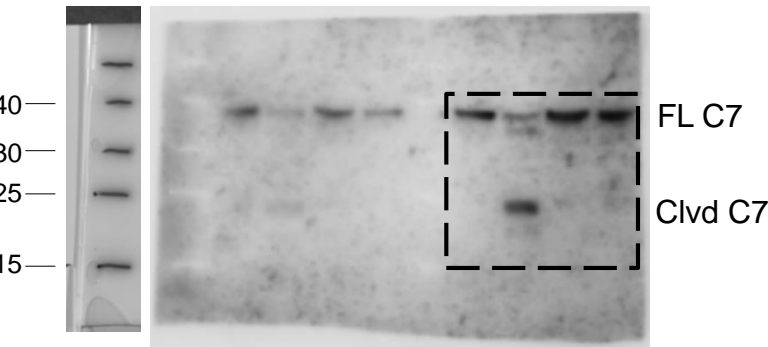
Full-length blots from Figure 3 continued

B

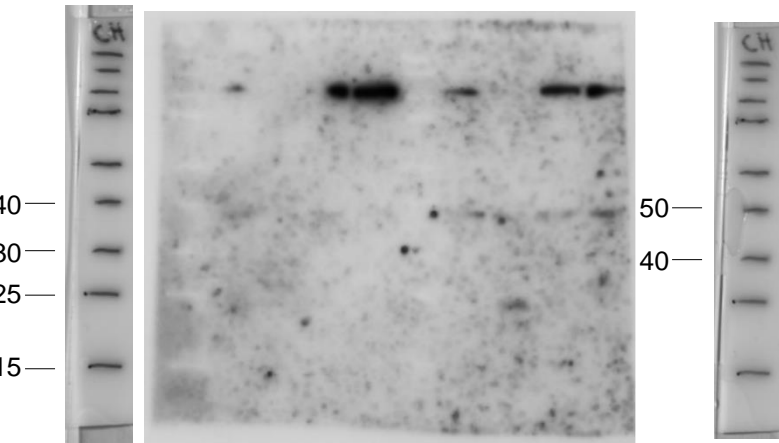
CAMA-1 MCF-7
- + - + LCL+TRAIL



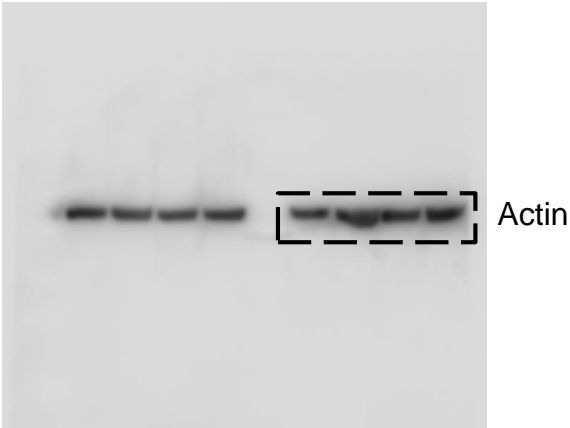
Bands in lanes outside the cropped area are from another experiment



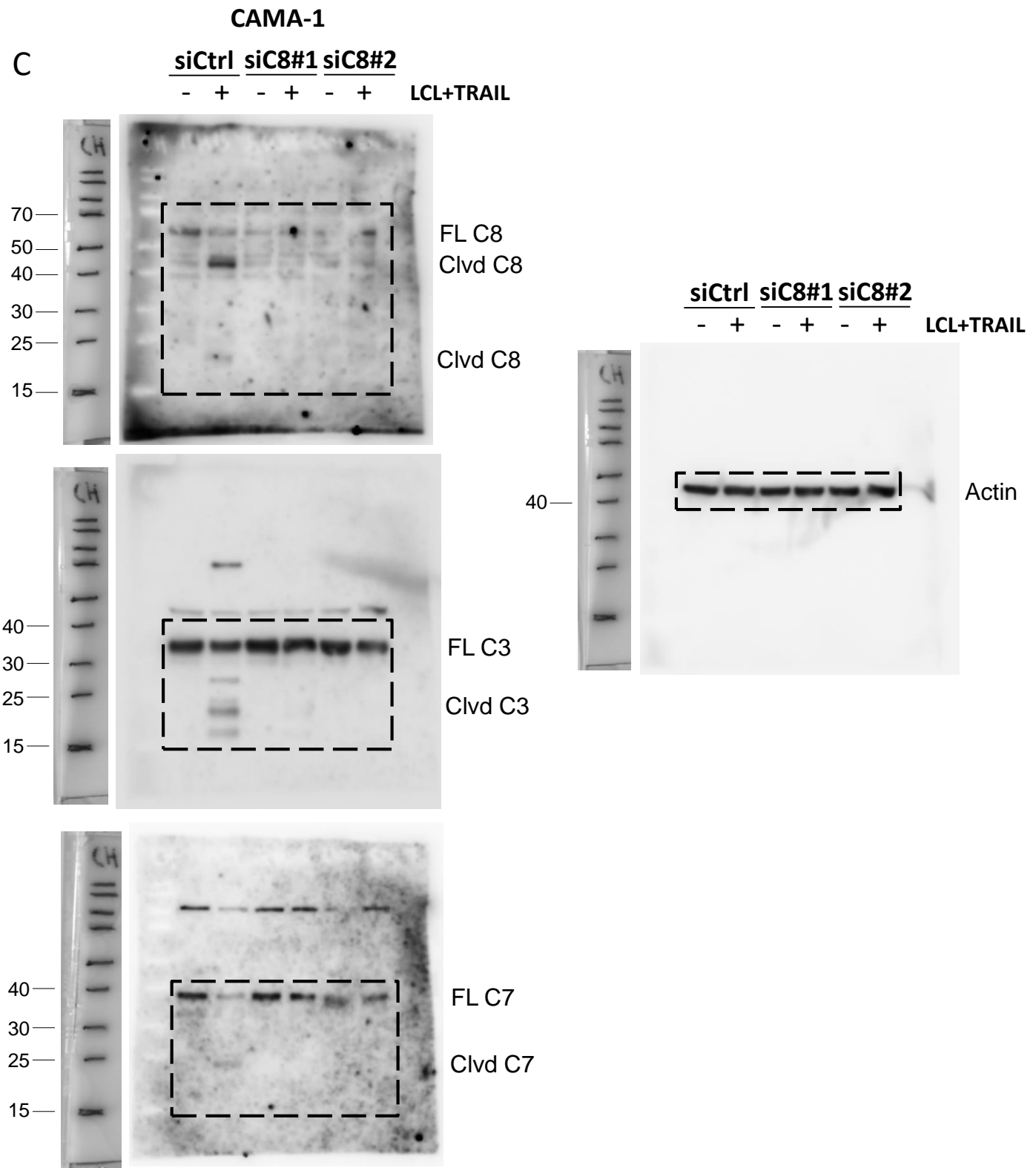
Part of the membrane was blocked to allow better visibility of cleaved caspase-7. Below is an image of the full-length blot



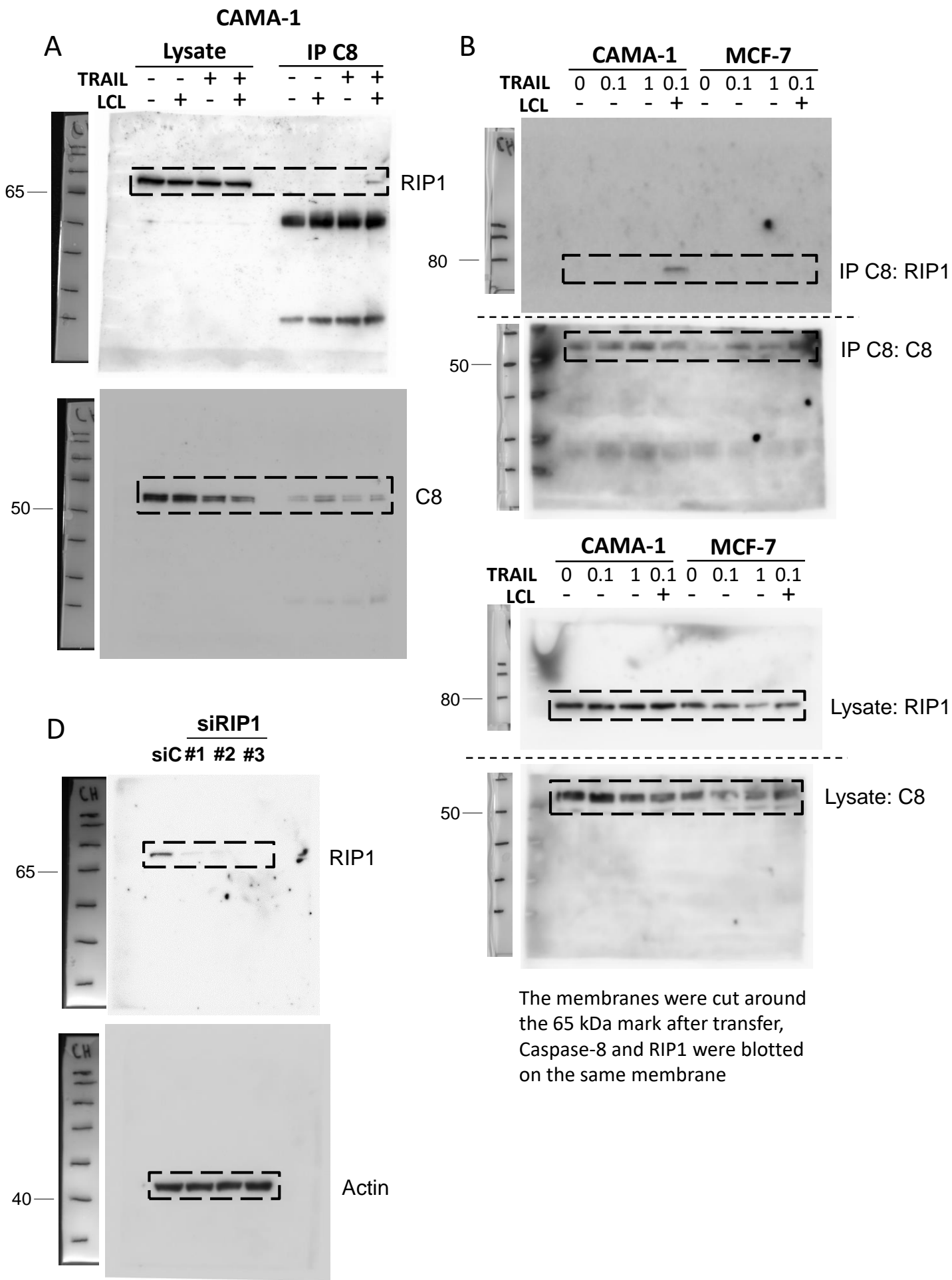
CAMA-1 MCF-7
- + - + LCL+TRAIL



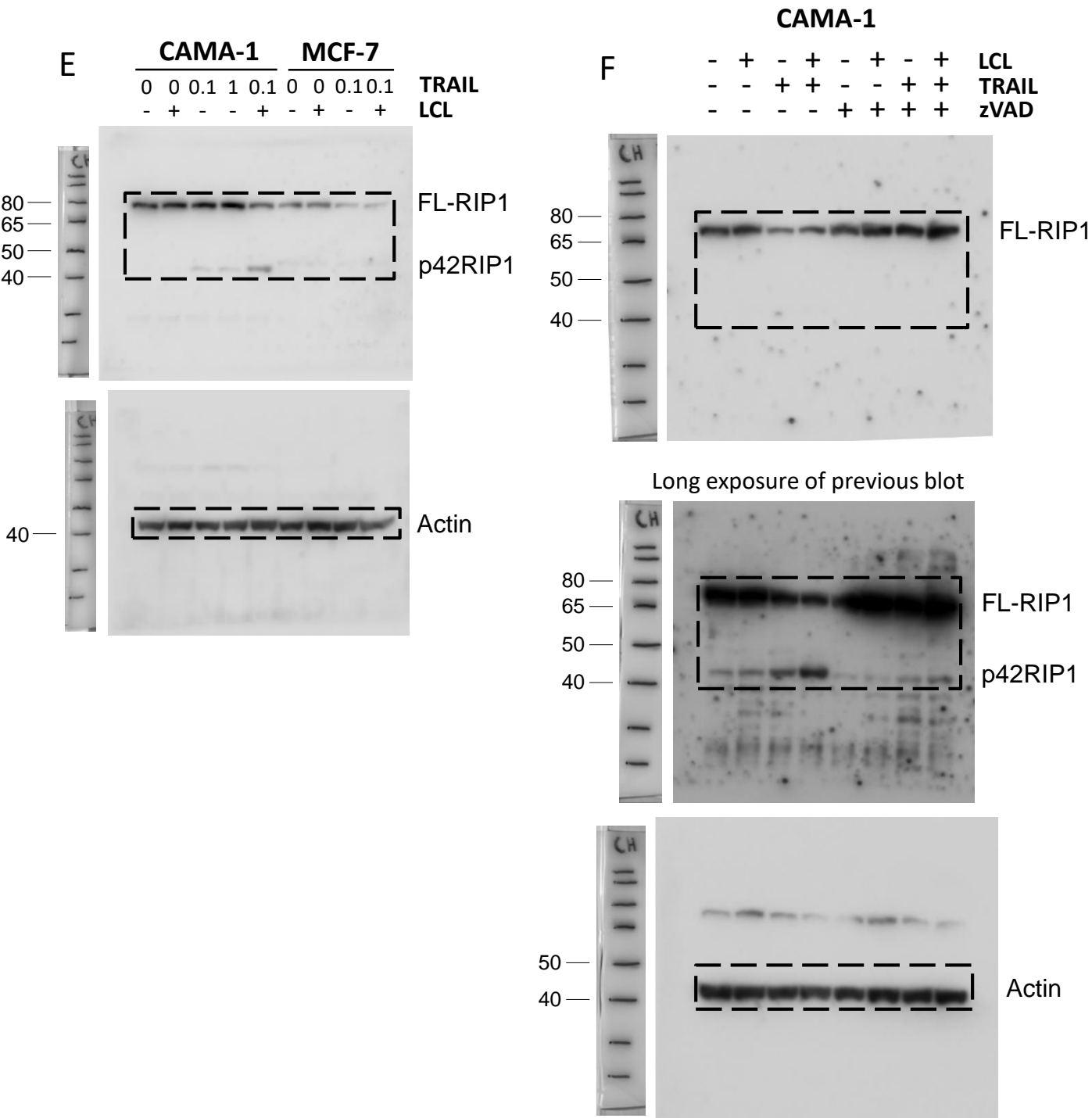
Full-length blots from Figure 3 continued



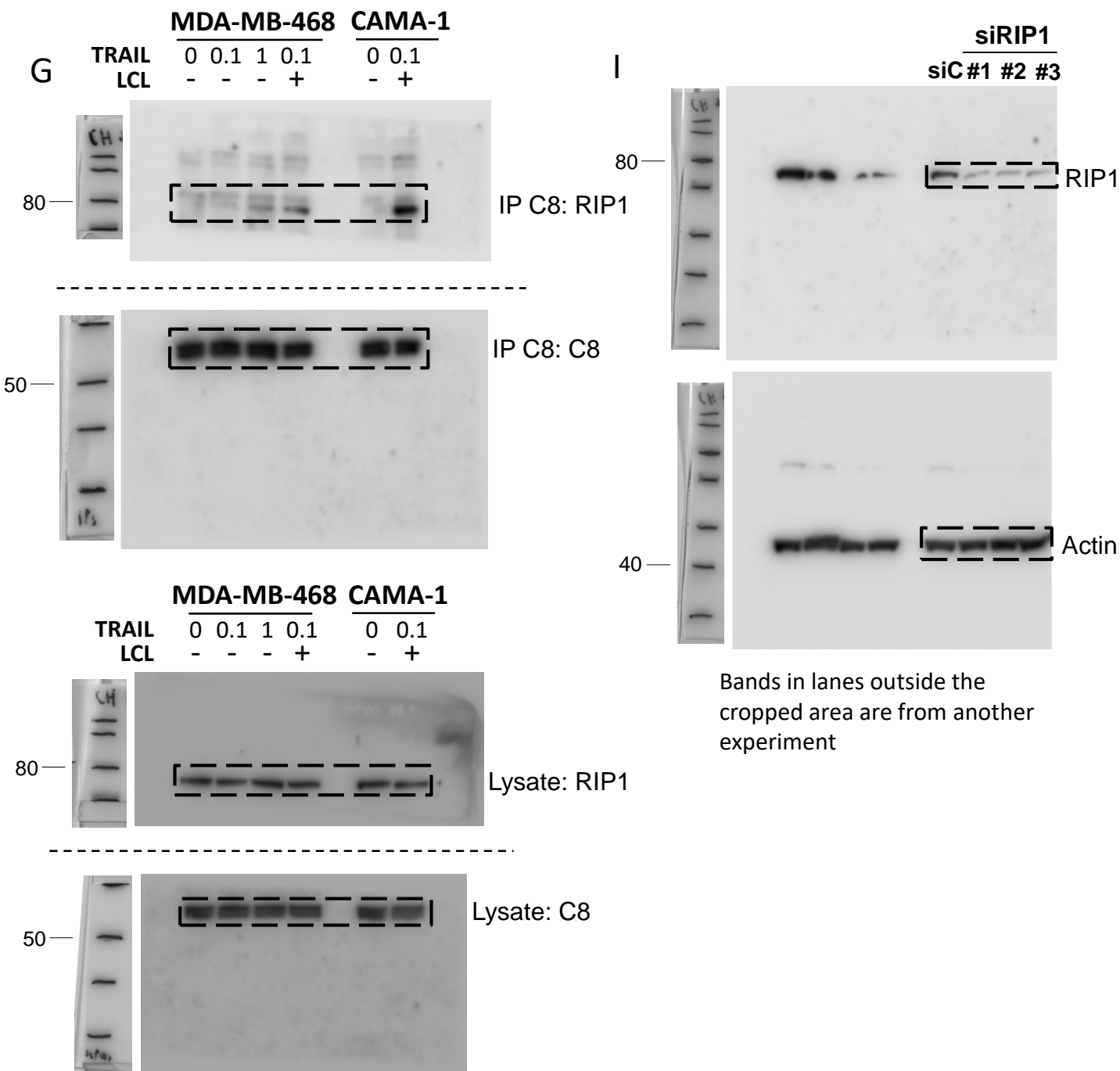
Full-length blots from Figure 4



Full-length blots from Figure 4 continued



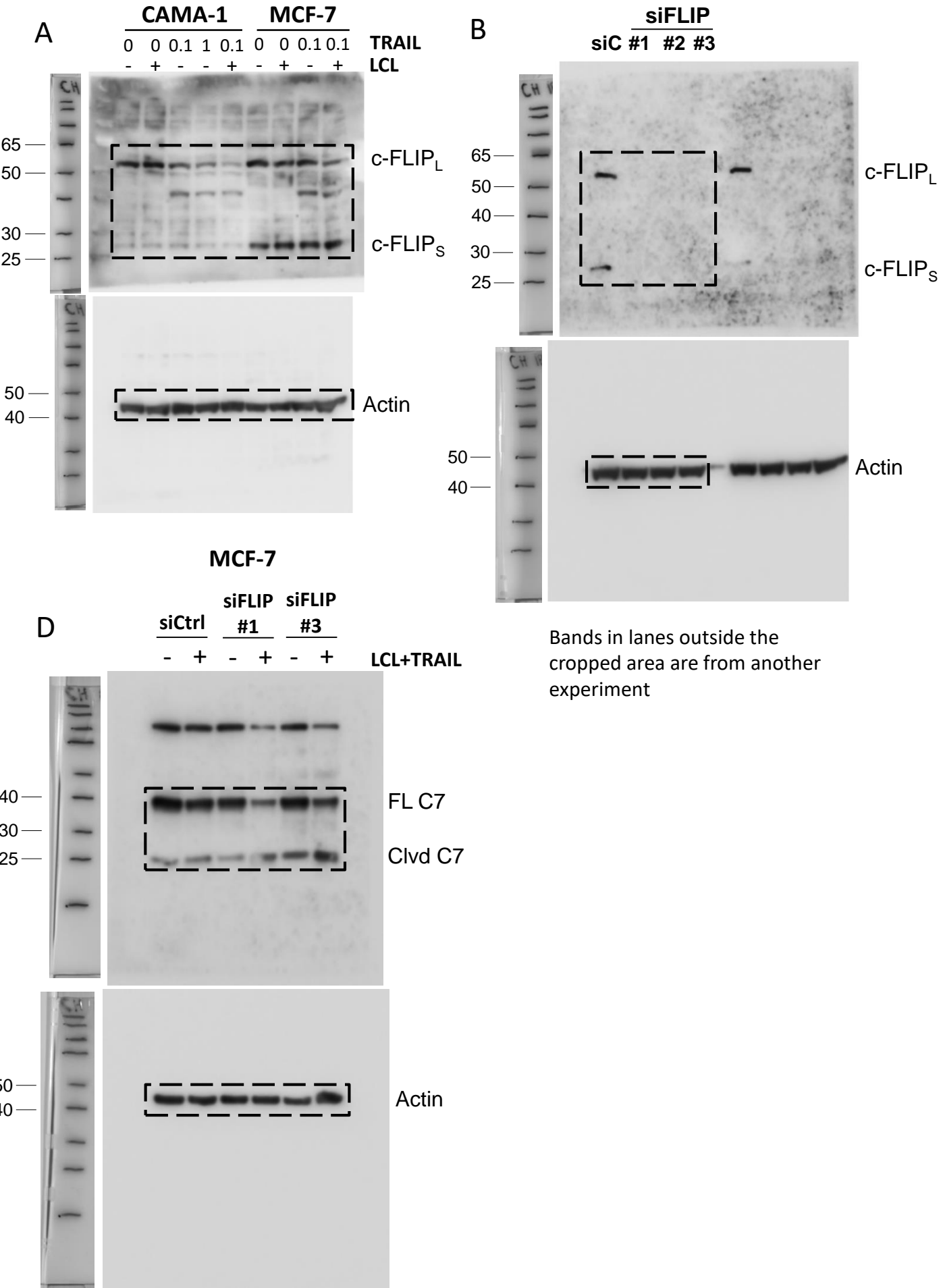
Full-length blots from Figure 4 continued



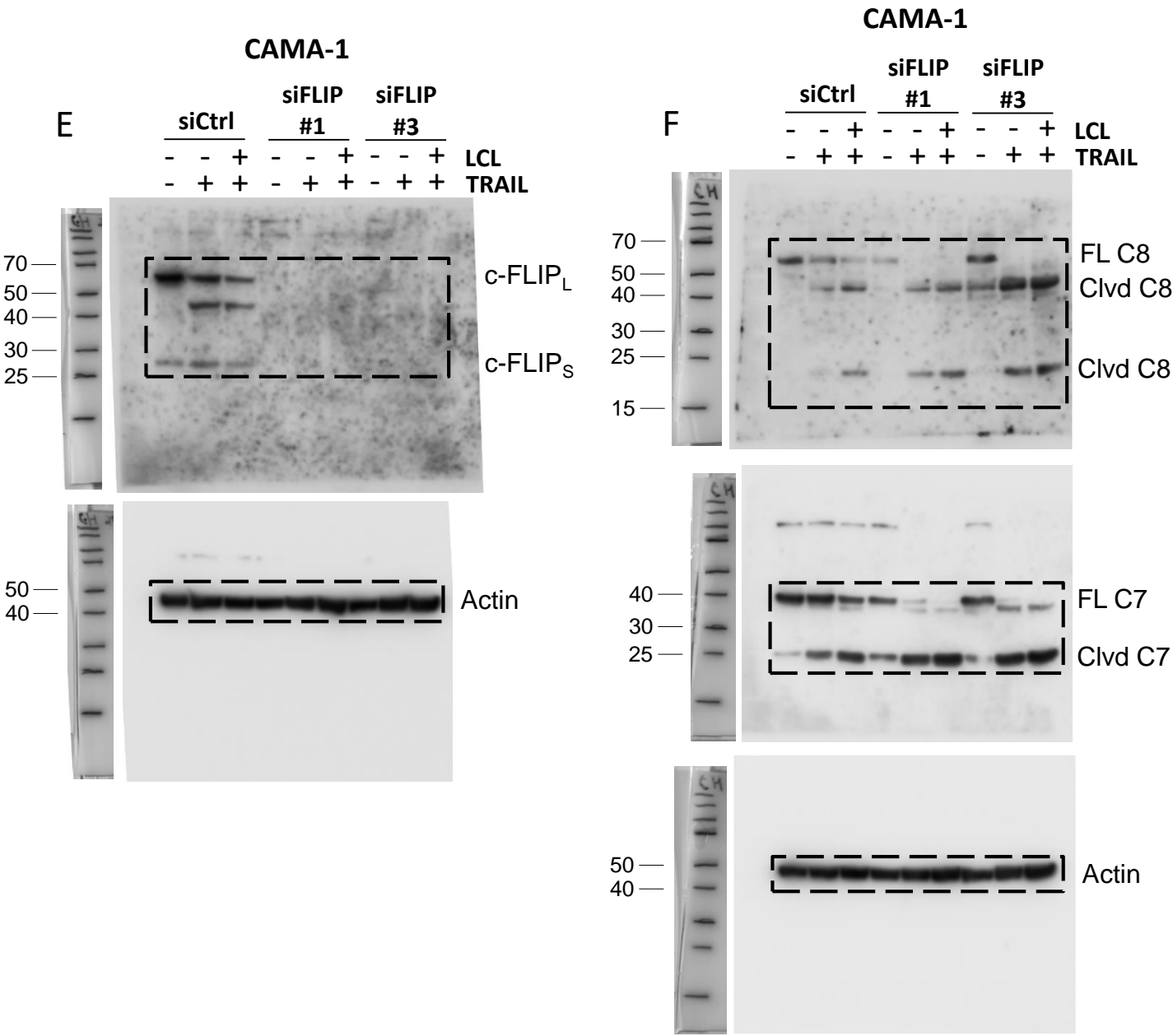
Bands in lanes outside the cropped area are from another experiment

The membranes were cut around the 65 kDa mark after transfer, Caspase-8 and RIP1 were blotted on the same membrane

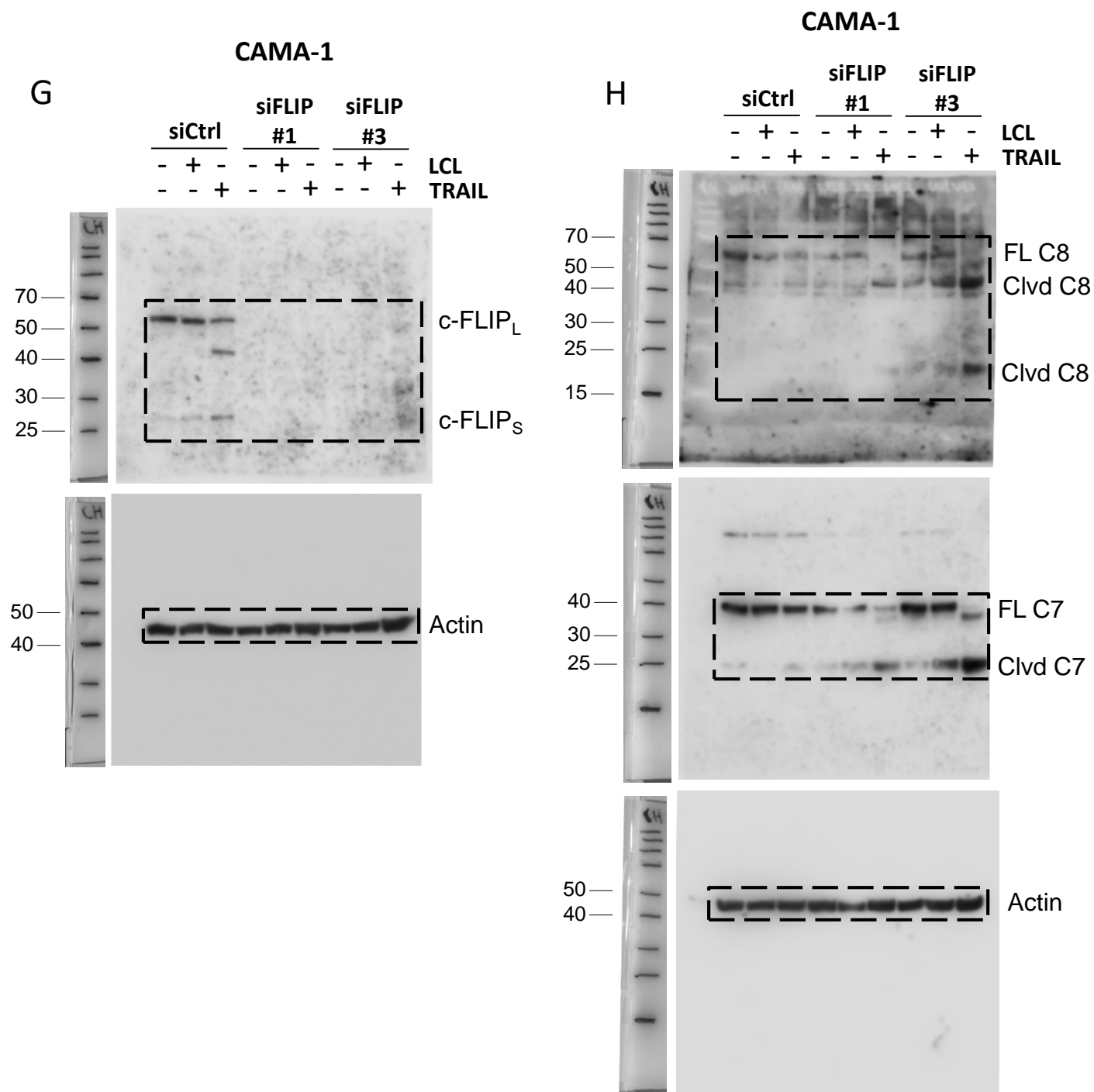
Full-length blots from Figure 5



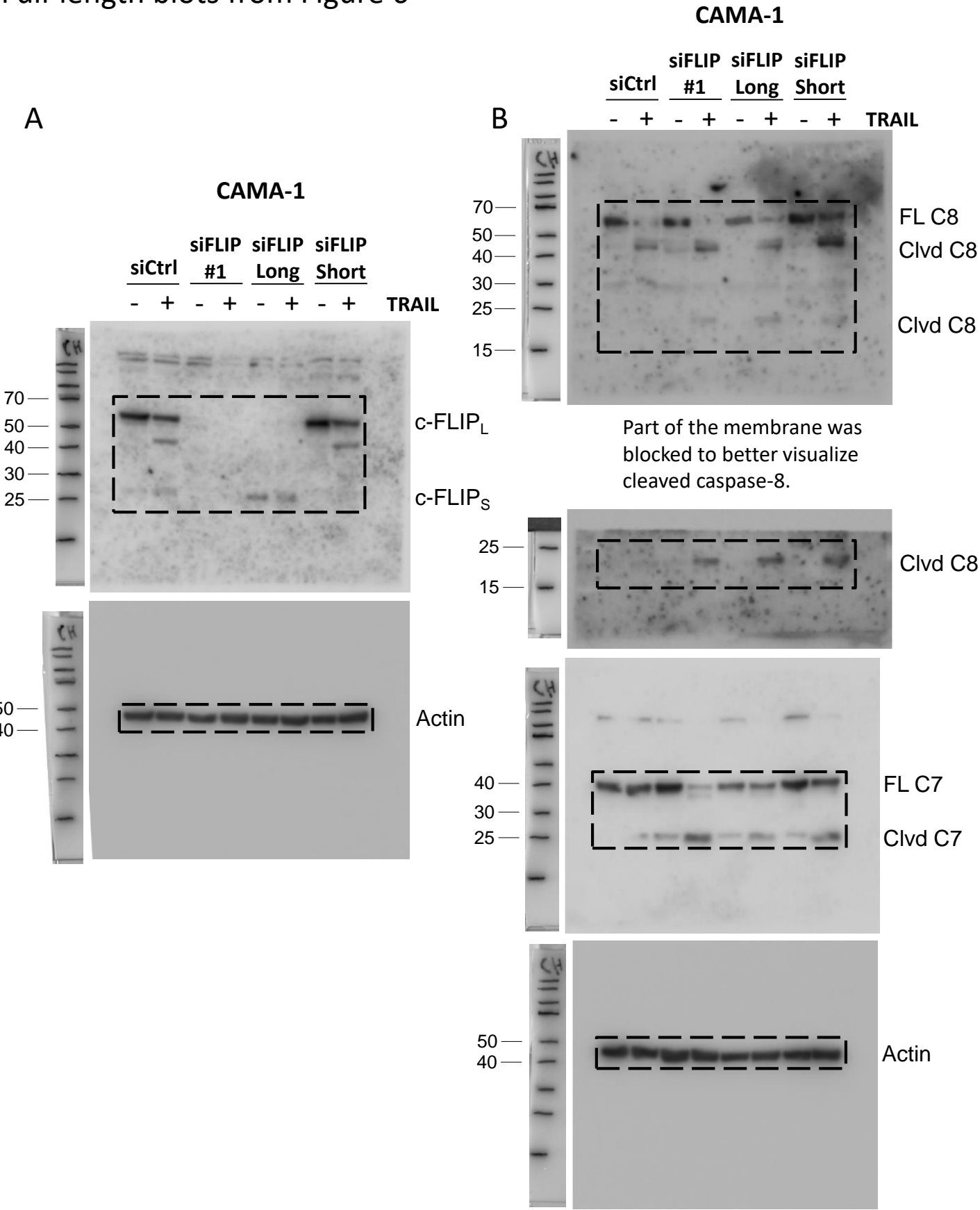
Full-length blots from Figure 5 continued



Full-length blots from Figure 5 continued



Full-length blots from Figure 6



Full-length blots from Figure 6 continued

