

Figure S1. Chromatographic profile (GC/MS, full scan) of *Lippia alba* carvone chemotype essential oil. DB-5MS (60 m) column, *split* 1:30, MSD (EI, 70 eV). Compound identification appears in **Table 1**.

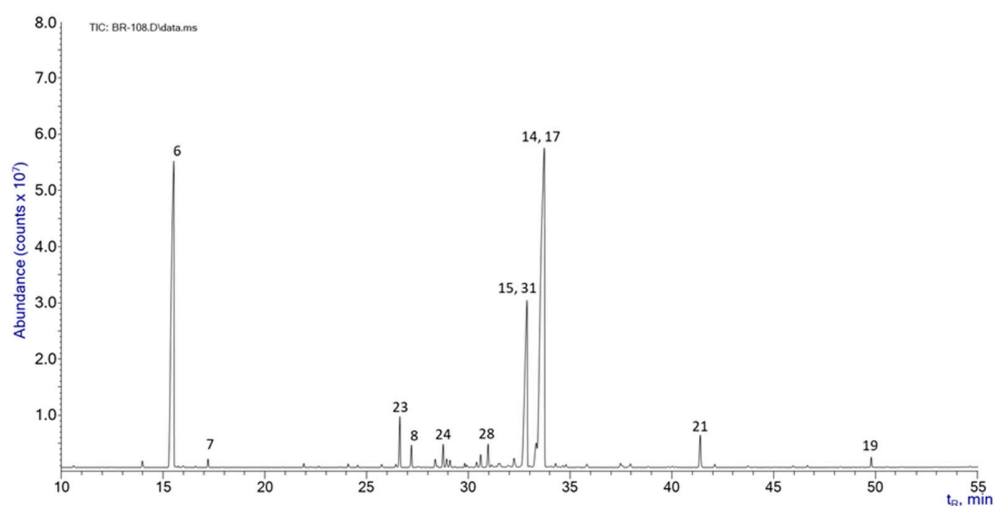


Figure S2. Chromatographic profile (GC/MS, full scan) of *Lippia alba* carvone chemotype, essential oil. DB-WAX (60 m) column, *split* 1:30, MSD (EI, 70 eV). Compound identification appears in **Table 1**.