

Supplemental Information

Figure S1

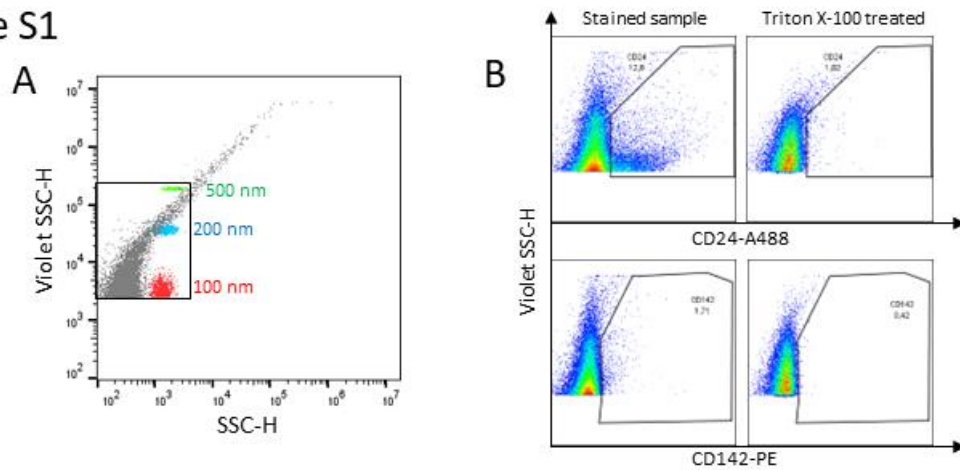


Figure S1. Representative flow cytometry results plots describing the gating strategy and EV confirmation test. (A) Representative plot with population of different size-control beads (colored) overlaying amniotic fluid EV population (gray). (B) Representative plots of amniotic fluid sample stained with anti-CD24 and anti-CD142 antibodies. Triton X-100 treatment was used to lyse all enclosed EVs and provide negative control.