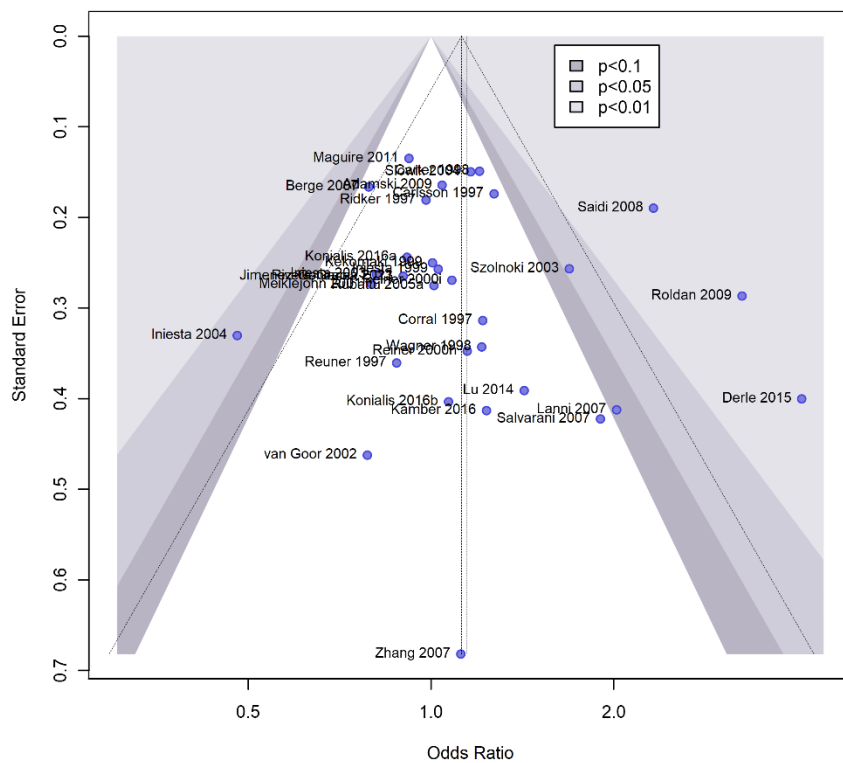


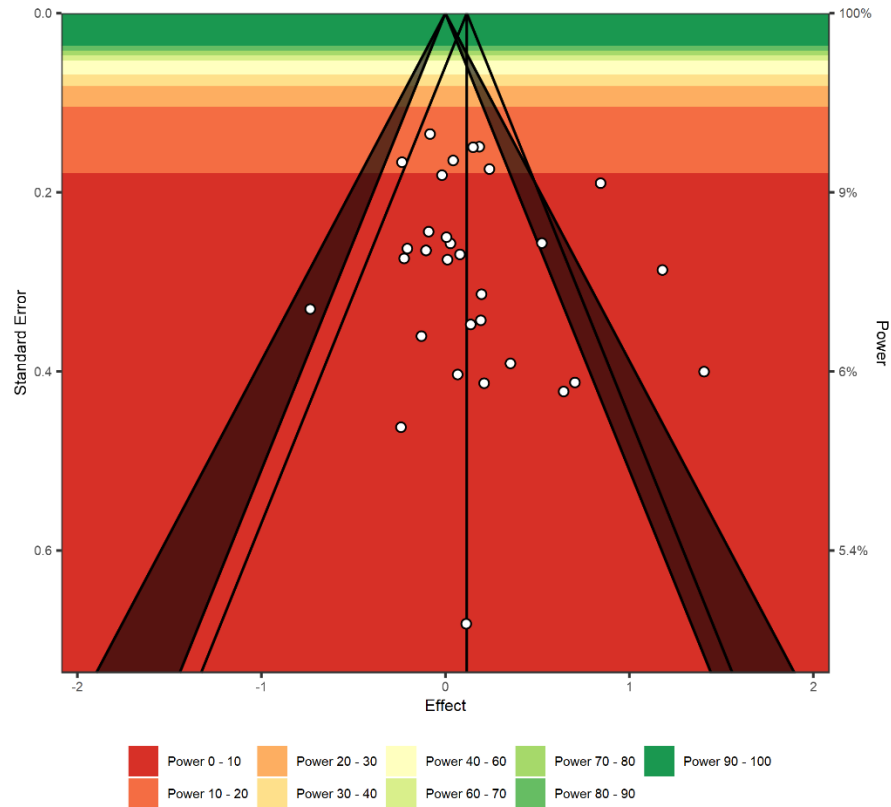
**Supplementary Table S1.** Quality assessment of the studies included in the meta-analysis.

Item	Selection				Comparability		Exposure			Total (max 9)	Overall rating
Author, year	1	2	3	4			1	2	3		
Adamski et al. 2009 [27]	1	1	1	1	1	0	1	1	1	8	good
Berge et al. 2007 [28]	1	1	0	1	1	0	1	1	1	7	good
Carlsson et al. 1997 [29]	1	1	1	1	1	0	1	1	1	8	good
Carter et al. 1998 [30]	1	1	1	1	1	1	1	1	1	9	good
Corral et al. 1997 [31]	1	1	0	1	1	1	1	1	1	8	good
Derle et al. 2015 [32]	1	1	1	1	1	0	1	1	1	8	good
Iniesta et al. 1999 [33]	1	1	1	1	1	1	1	1	1	9	good
Iniesta et al. 2003 [34]	1	1	0	1	1	1	1	1	1	8	good
Iniesta et al. 2004 [35]	1	1	0	1	1	1	1	1	1	8	good
Jimenez-Gonzalez et al. 2021 [36]	1	1	1	1	1	0	1	1	1	8	good
Kamberi et al. 2016 [37]	1	1	1	1	1	1	1	1	1	9	good
Kekomaki et al. 1999 [38]	1	1	1	1	1	1	1	1	1	9	good
Konialis et al. 2016a [39]	1	1	1	1	1	1	1	1	1	9	good
Konialis et al. 2016b [39]	1	1	1	1	1	1	1	1	1	9	good
Lanni et al. 2007 [40]	1	1	0	1	1	1	1	1	1	8	good
Lu et al. 2014 [41]	1	1	1	1	1	0	1	1	1	8	good
Maguire et al. 2011 [42]	1	1	1	1	1	0	1	1	1	8	good
Meiklejohn et al. 2001 [43]	1	1	1	1	1	0	1	1	1	8	good
Reiner et al. 2000 [9]	1	1	1	1	1	1	1	1	1	9	good
Reuner et al. 1997 [44]	1	1	1	1	1	0	1	1	1	8	good
Ridker et al. 1997 [45]	1	1	1	1	1	0	1	1	1	8	good
Rivera-Garcia et al. 2013 [46]	1	1	1	1	1	1	1	1	1	9	good
Roldan et al. 2009 [47]	1	1	1	1	1	1	1	1	1	9	good
Rubattu et al. 2005 [48]	1	1	1	1	1	1	1	1	1	9	good
Saidi et al. 2008 [29]	1	1	1	1	1	0	1	1	1	8	good
Slowik et al. 2004 [49]	1	1	1	1	1	1	1	1	1	9	good
Salvarani et al. 2007 [50]	1	1	1	1	1	0	1	1	1	8	good
Szolnoki et al. 2003 [51]	1	1	1	1	1	1	1	1	1	9	good
van Goor et al. 2002 [52]	1	1	1	1	0	0	1	1	1	7	good
Wagner et al. 1998 [53]	1	1	1	1	1	1	1	1	1	9	good
Zhang et al. 2007 [54]	1	1	1	1	1	1	1	1	1	9	good

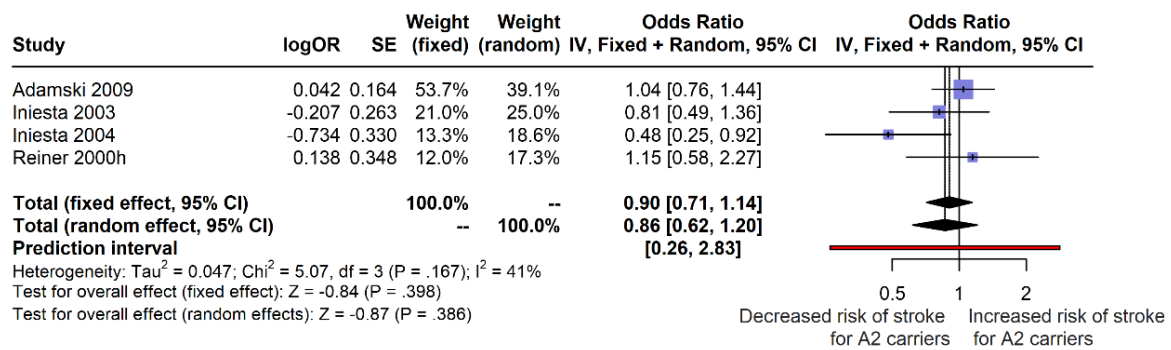
*The overall rating of "good," "fair," or "poor" quality was given to the studies as follows: good - 7 to 9, fair - 4 to 6, and poor - 0 to 3.*



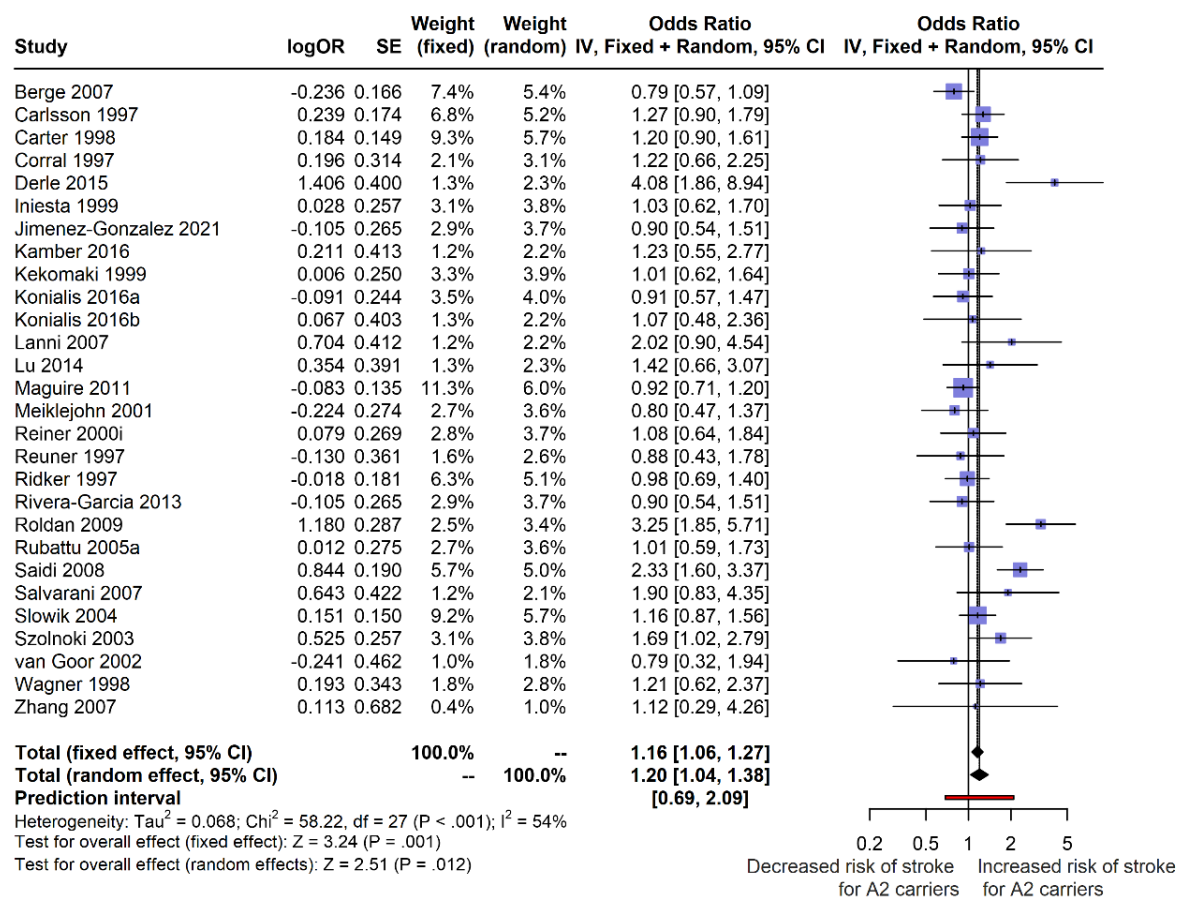
**Supplementary figure S1.** Funnel plot with labels for the inspection of study bias showing the scatter of the studies effect sizes and the measure of their standard error.



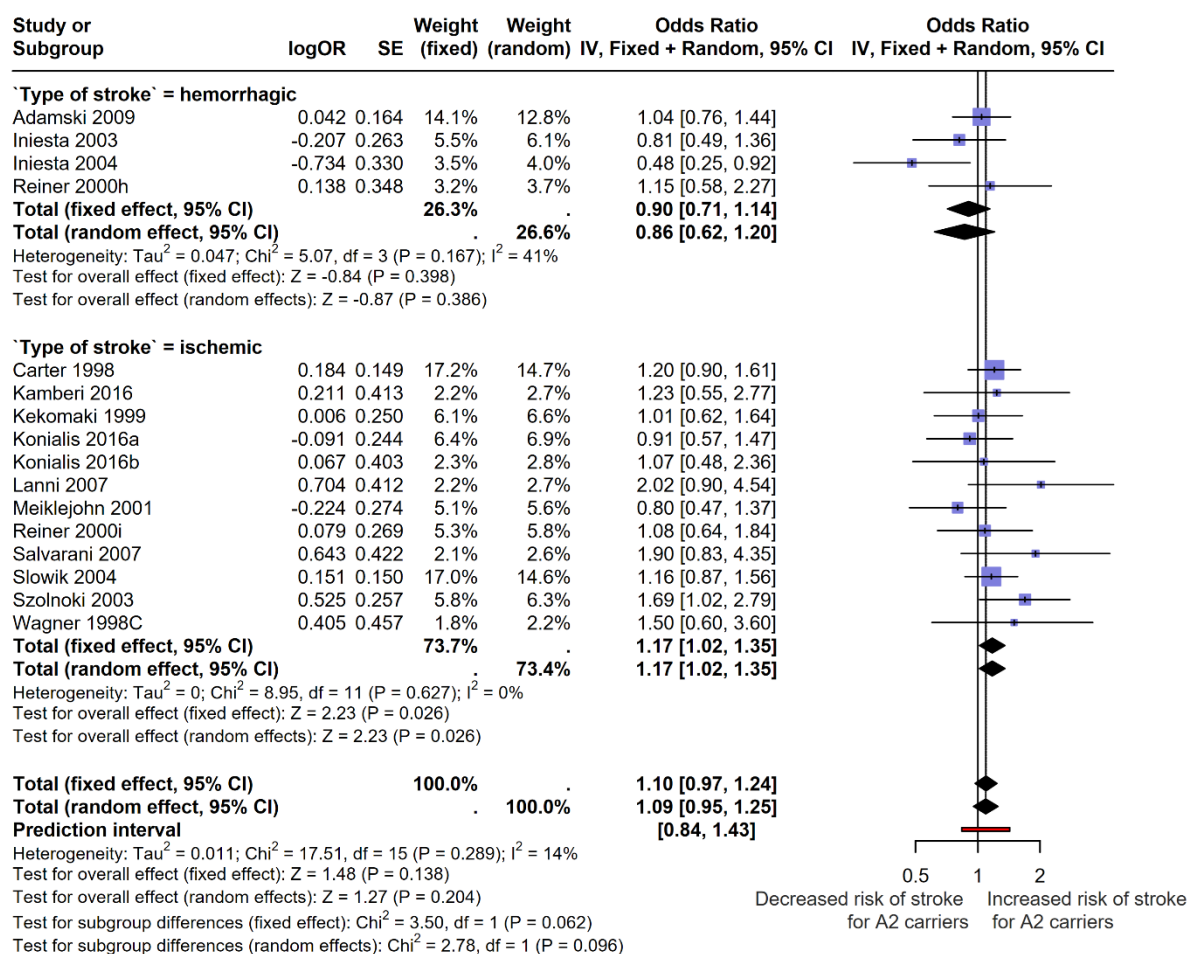
**Supplementary figure S2.** Sunset power enhanced funnel plot showing study-level statistical power.



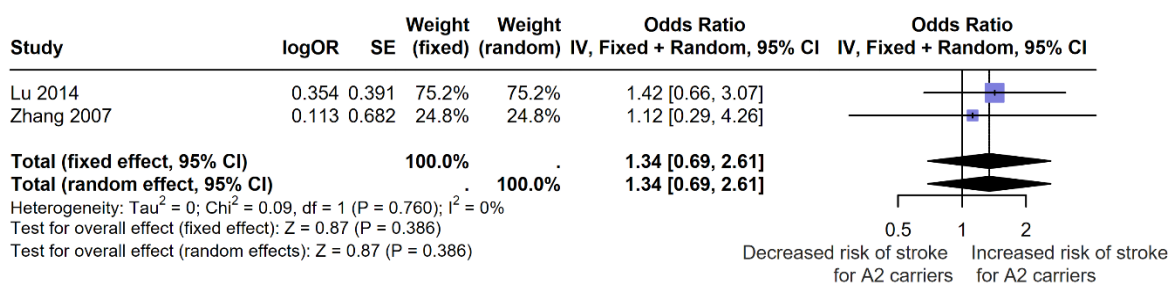
**Supplementary figure S3.** Forest plot for haemorrhagic stroke studies.



**Supplementary figure S4.** Forest plot for ischemic stroke studies.



Supplementary figure S5. Forest plot for stroke studies specifying the race: Caucasian.



Supplementary figure S6. Forest plot for stroke studies specifying the race: Asian.