

Supplementary Information

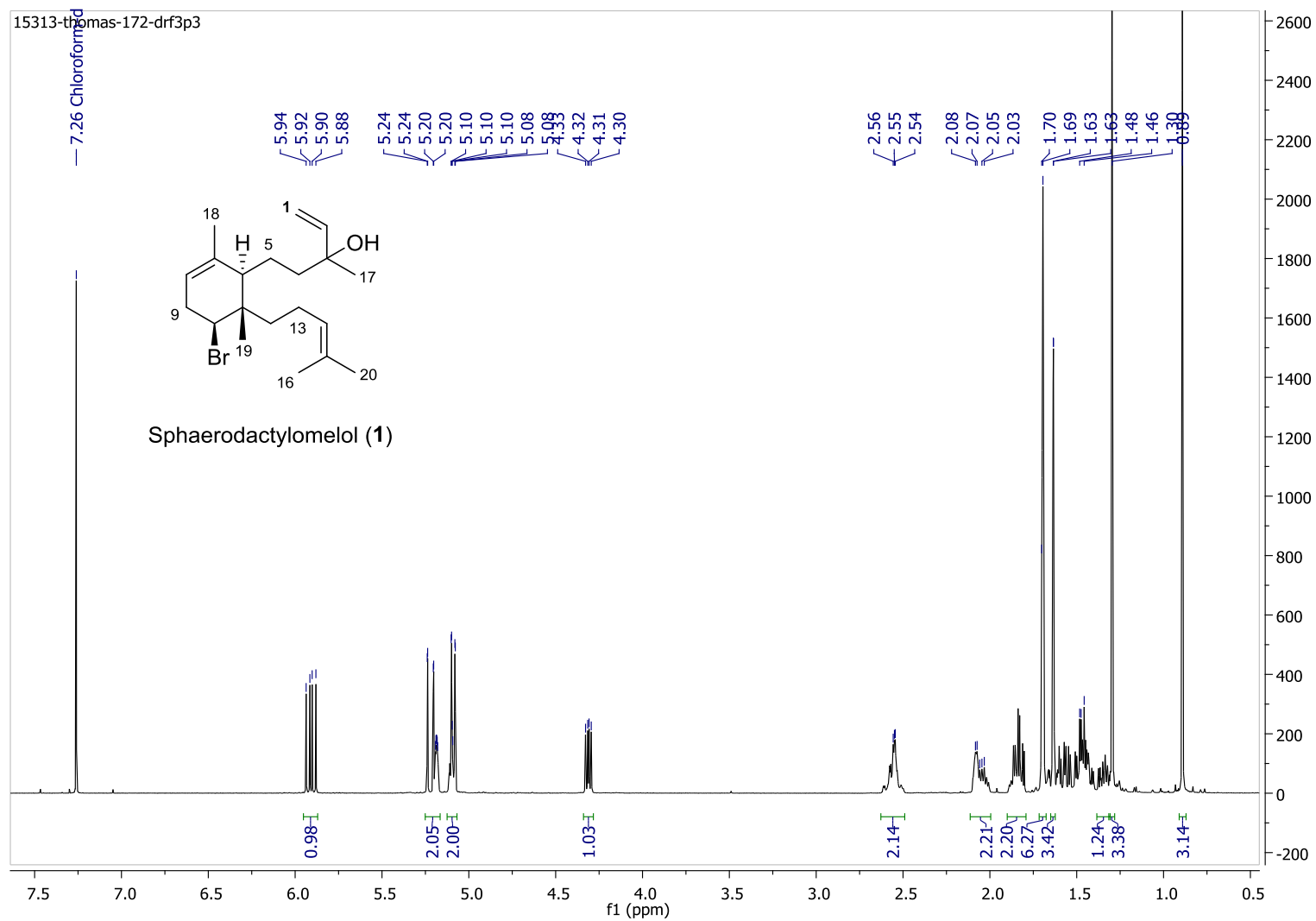


Figure S1. ¹H NMR spectrum of **1** (500 MHz) in CDCl₃.

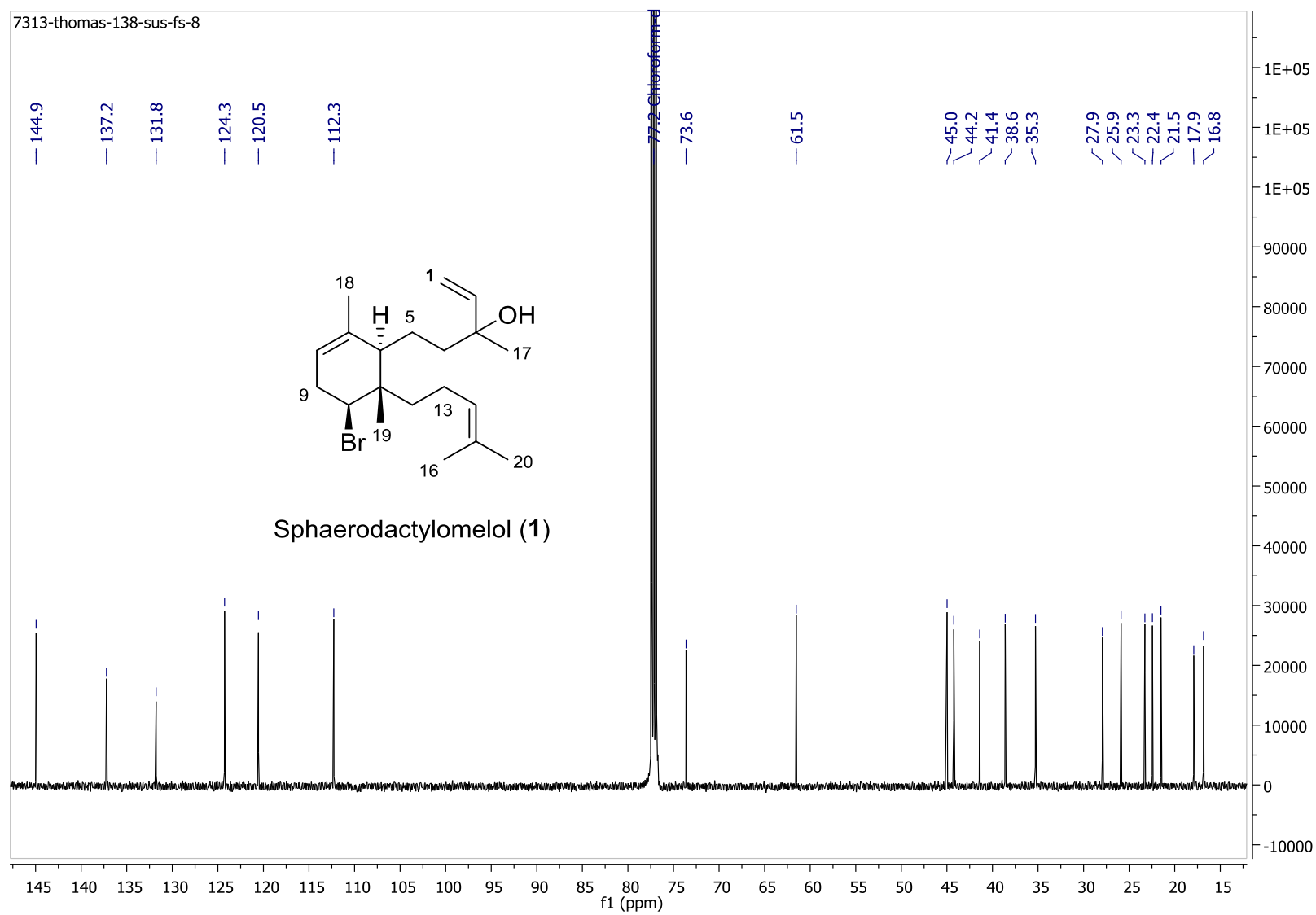


Figure S2. ^{13}C NMR spectrum of **1** (125 MHz) in CD_3OD .

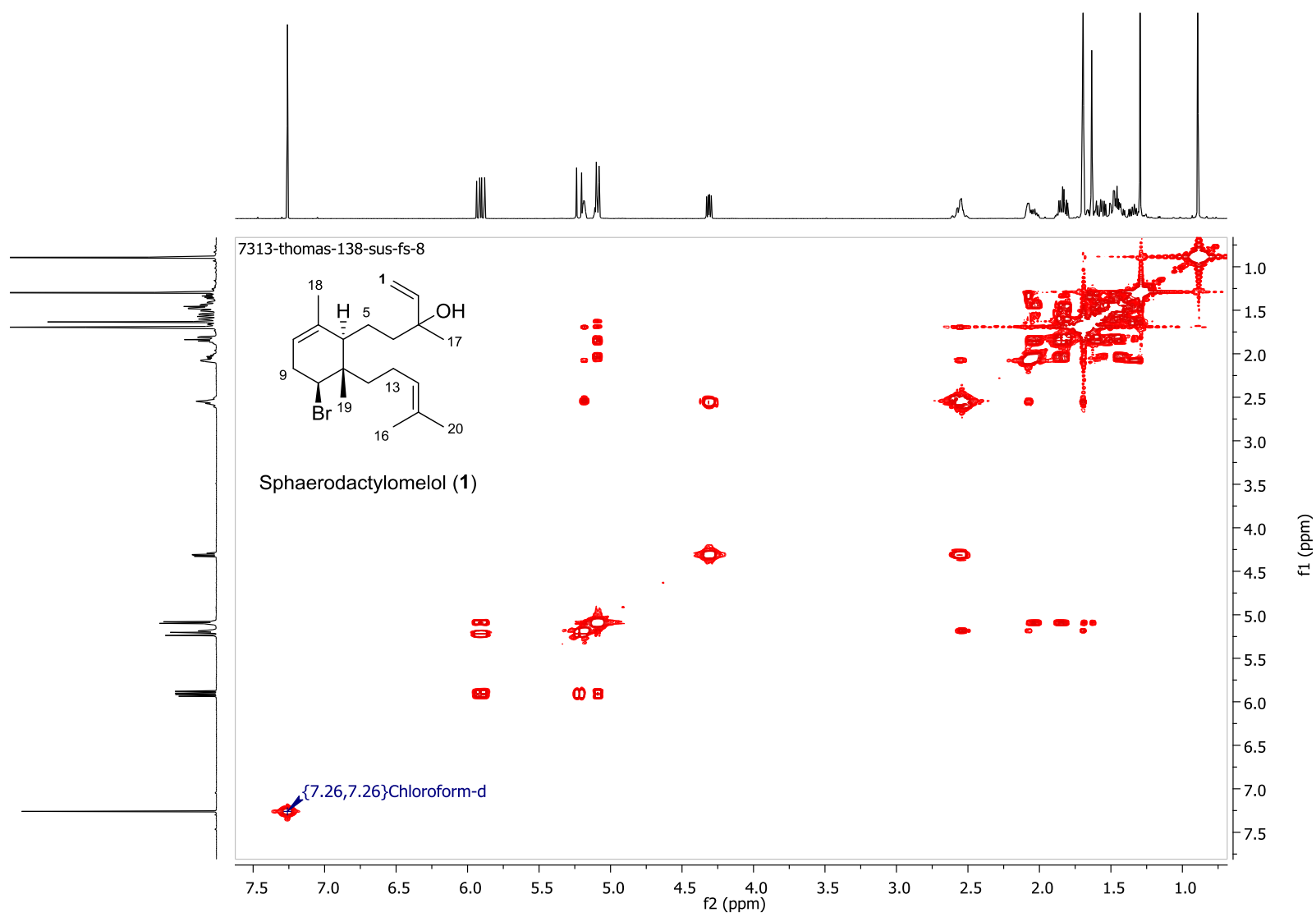
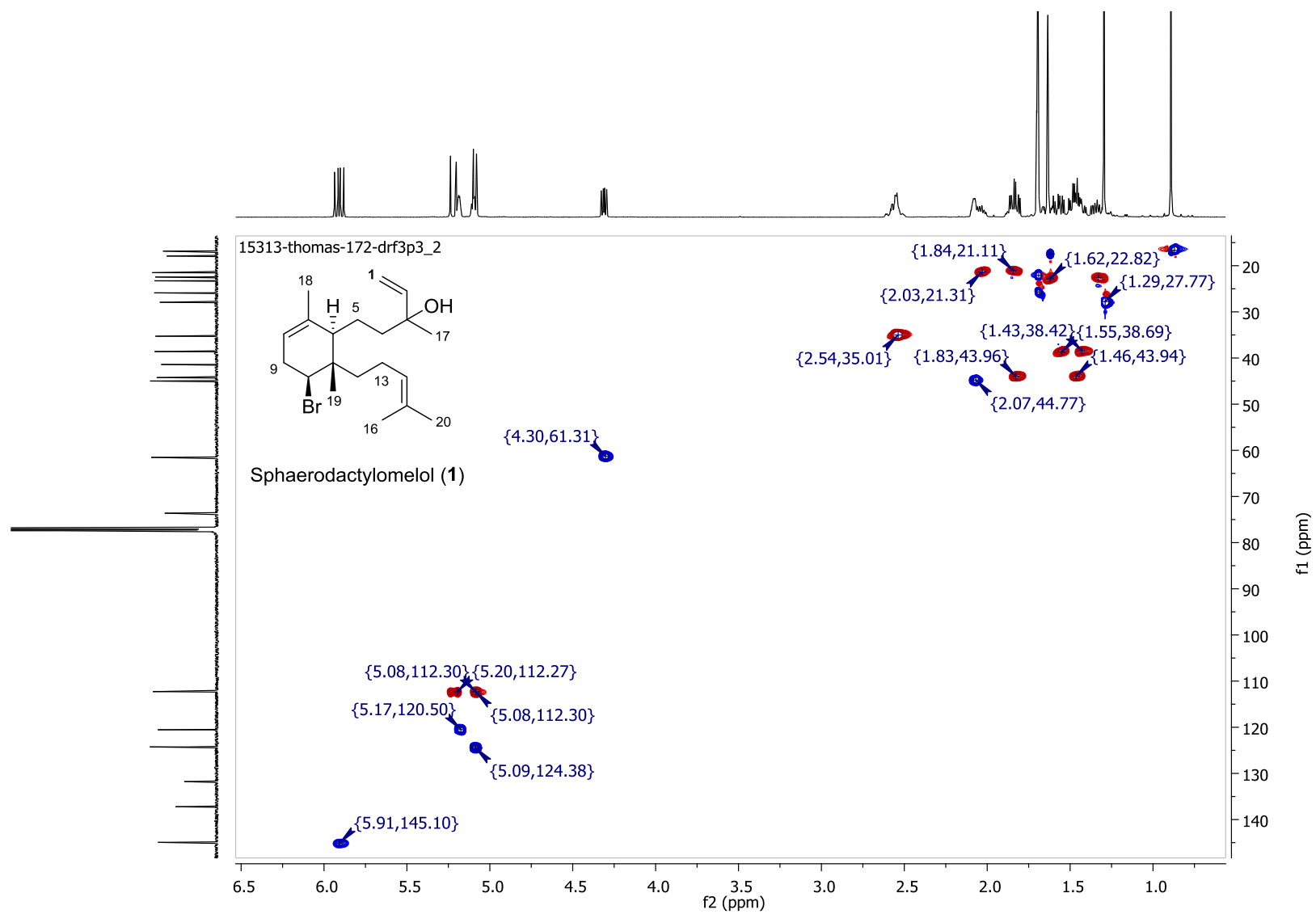
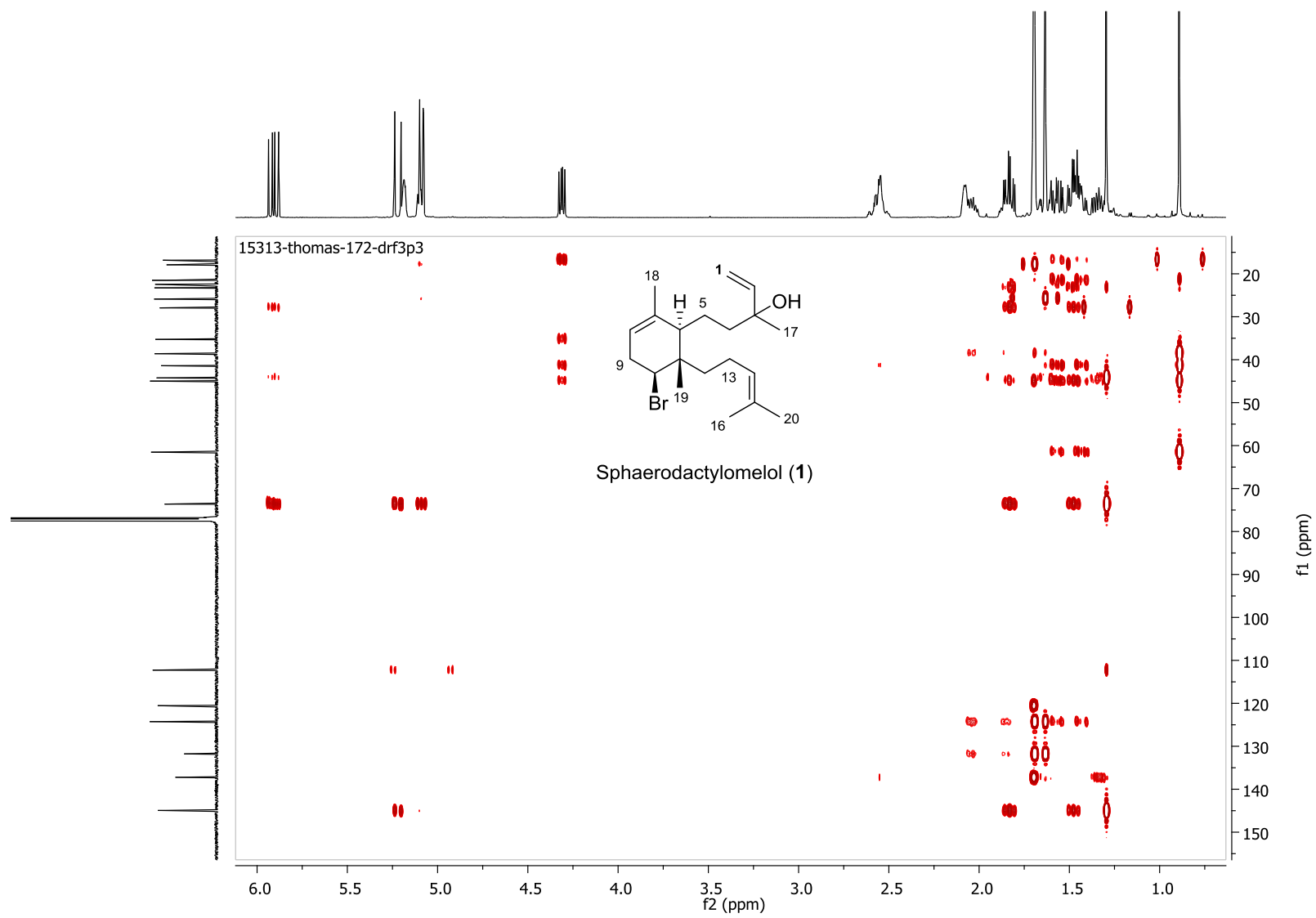


Figure S3. COSY spectrum of **1** in CDCl₃.

Figure S4. HSQC spectrum of **1** in CDCl₃.

Figure S5. HMBC spectrum of **1** in CDCl₃.

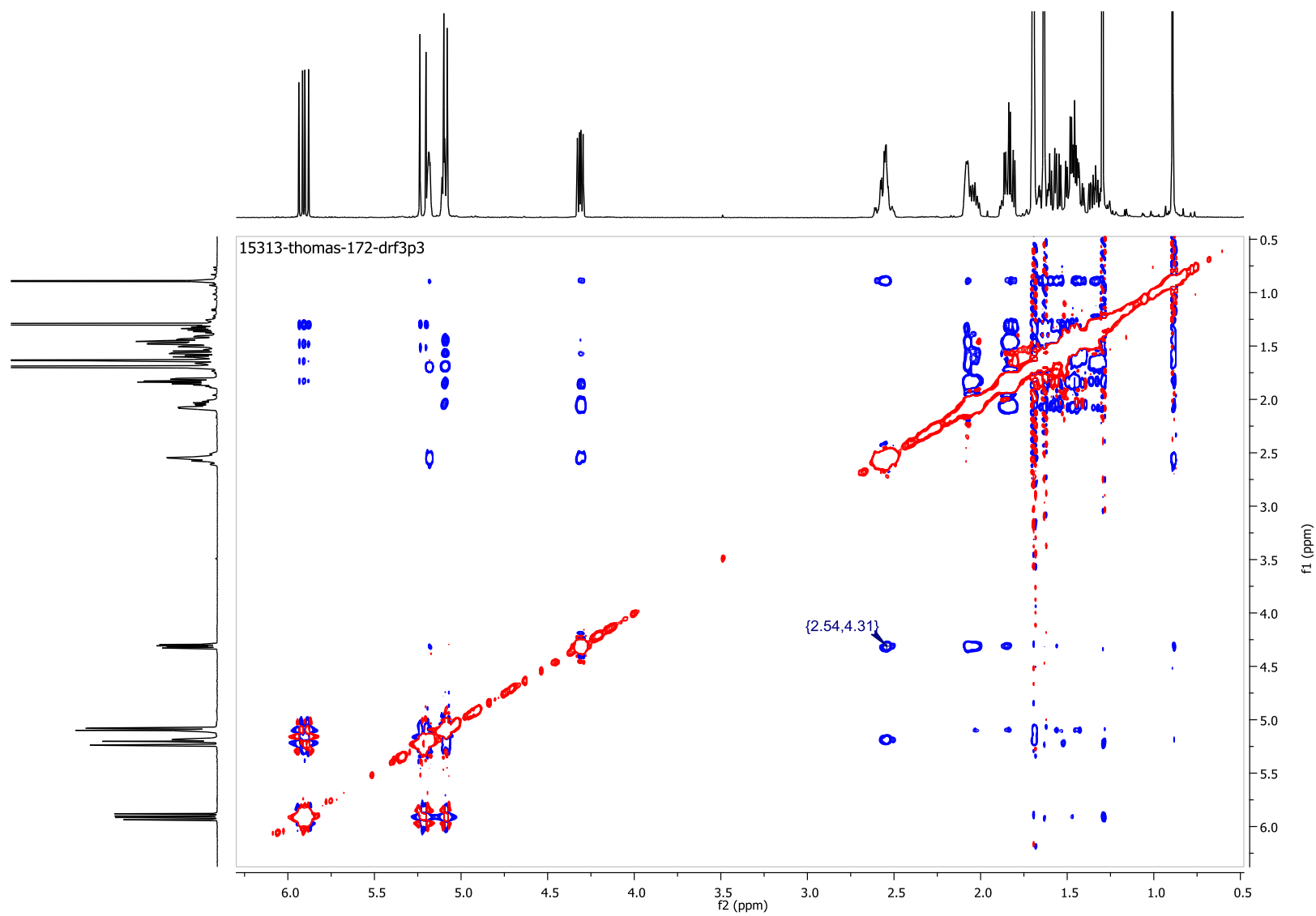


Figure S6. NOESY spectrum of **1** in CDCl₃.

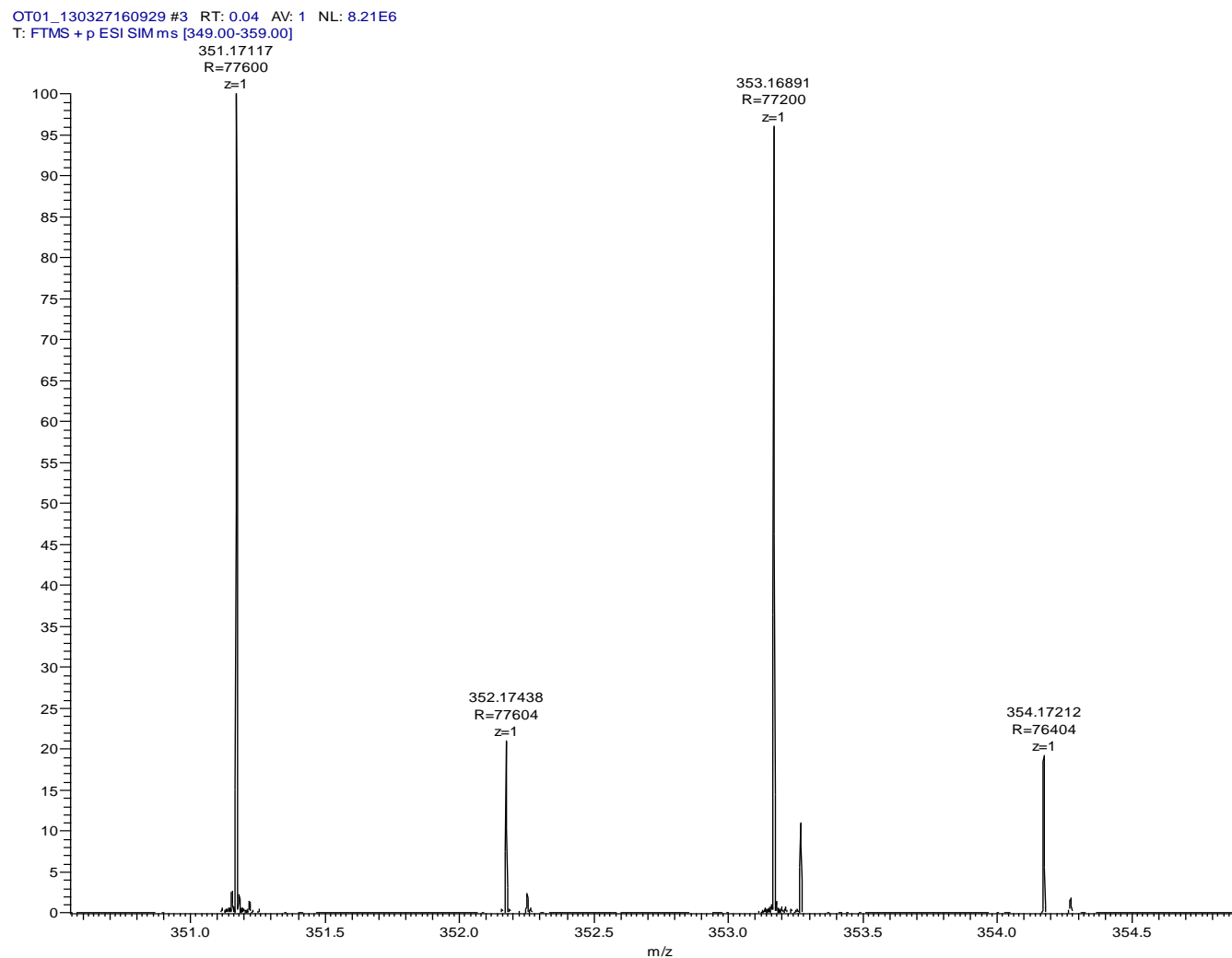


Figure S7. HRESIMS spectrum of **1**.