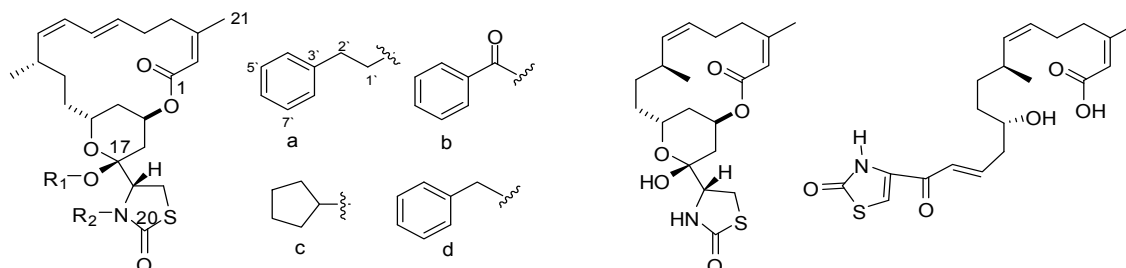


Supplementary Materials: Discovery of Novel Antiangiogenic Marine Natural Product Scaffolds

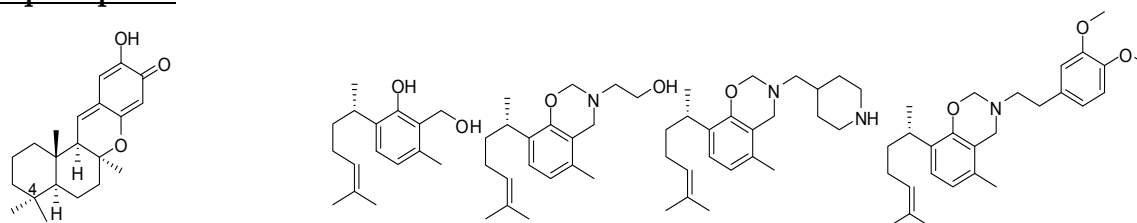
Hassan Y. Ebrahim and Khalid A. El Sayed *

Macrolides

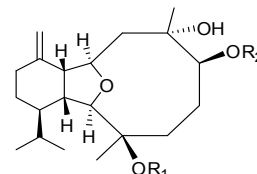
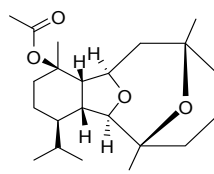
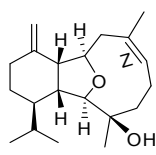
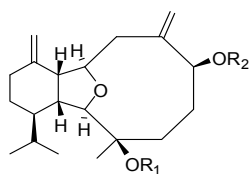


	R ₁	R ₂		
Latrunculin A (1)	H	H	Latrunculin B (14)	Latrunculin T (15)
2	CH ₃	H		
3	a	H		
4	b	H		
5	CH ₃	CH ₃		
6	CH ₃	C ₂ H ₅		
7	CH ₃	c		
8	CH ₃	(CH ₂) ₃ OH		
9	CH ₃	d		
10	CH ₃	b		
11	H	C ₂ H ₅		
12	H	d		
Latrunculin H (13)	H	CH ₂ OH		

Sesquiterpenes

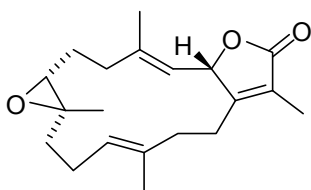


Puupehene (16) Curcuphenols: 17 18 19 20

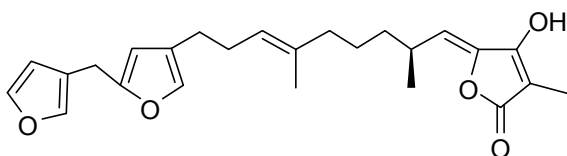
Diterpenes

(6Z)-Cladiellin (25) Polyanthelin A (26)

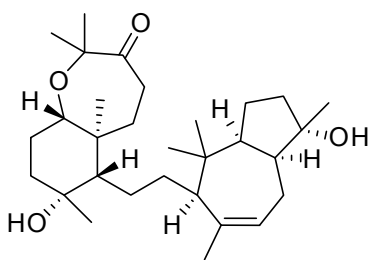
Cladiellisin (21)	R ₁	R ₂	Sclerophytin A (27)	R ₁	R ₂
3-Acetyl cladiellisin (22)	H	H	Sclerophytin F methylether (28)	H	H
3,6-Diacetyl cladiellisin (23)	Ac	H	Sclerophytin B (29)	H	CH ₃
Cladiellisin-6-butylcarbamate (24)	Ac	Ac		Ac	H
	H	CONHC ₄ H ₉			



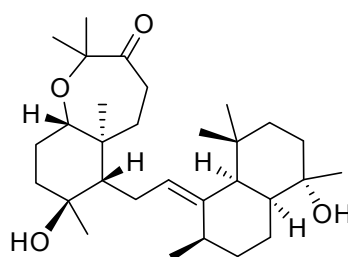
Sarcophine (30)

Sesterterpenes

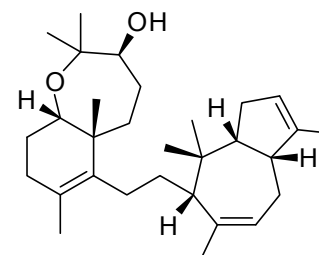
Ircinin-1 (31)

Triterpenes

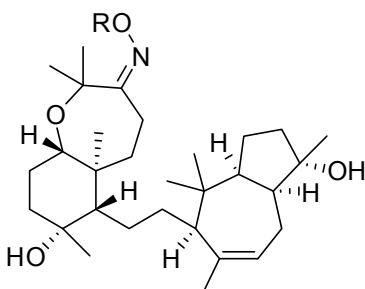
Sipholenone A (32)



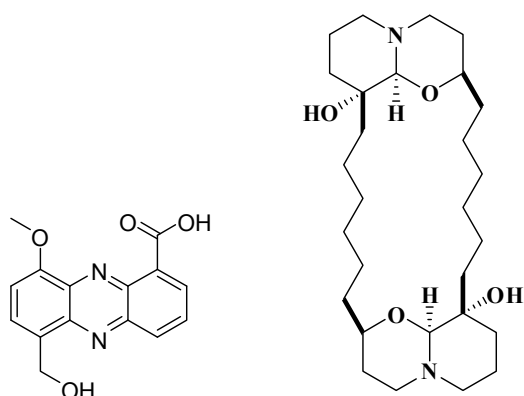
Sipholenone E (33)



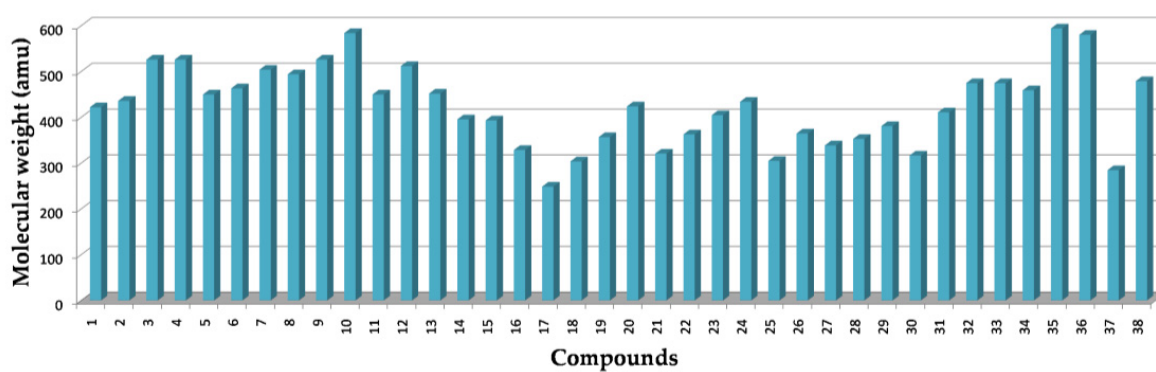
Anhydrosipholenol A (34)



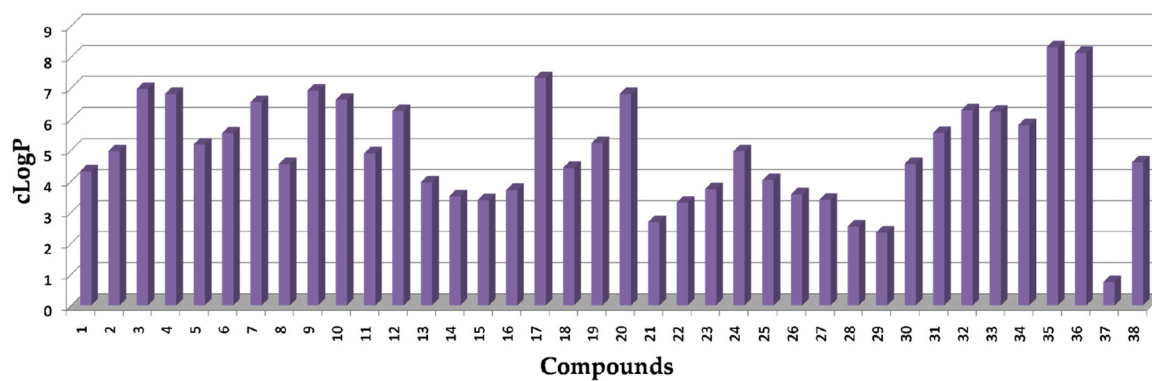
Sipholenone A-4Z- N-benzoyloxime (35)	R
Sipholenone A-4Z-N-benzoyloxime (36)	Benzoyl
	Benzyl

Alkaloids

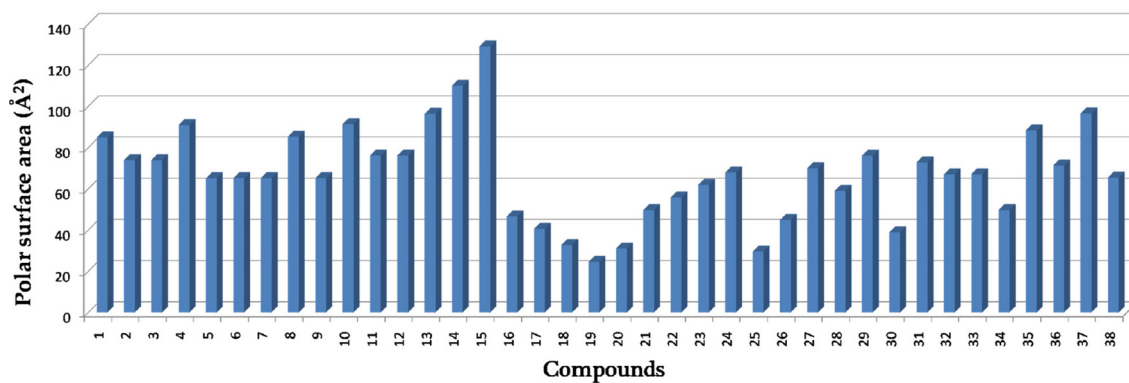
Griseoluteic acid (37) Araguspongine C (38)

Figure S1. Chemical structures of marine natural products (MNPs) library members accepted in Eli Lilly angiogenic screening assays.

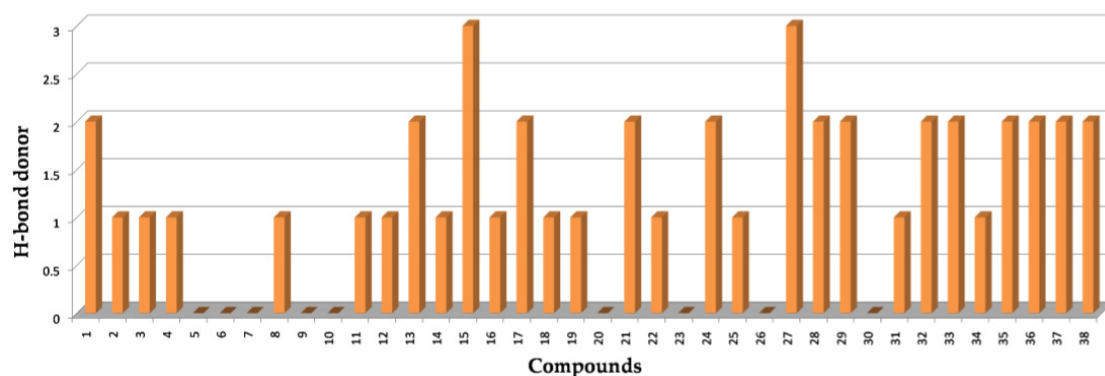
(a)



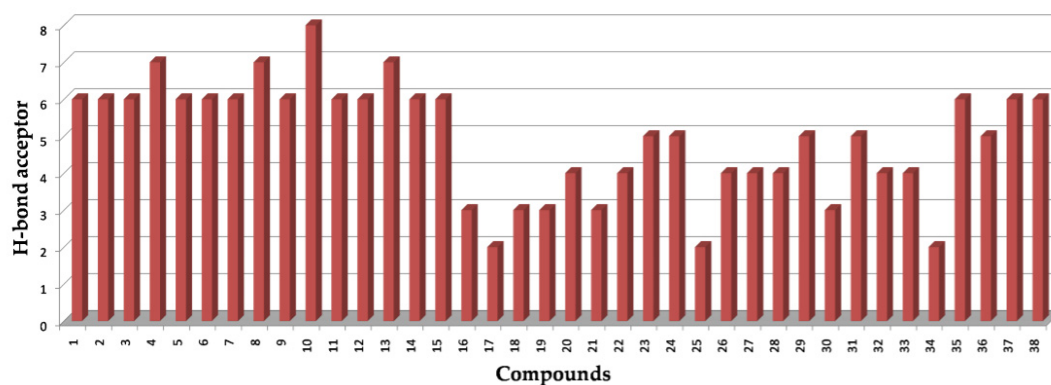
(b)



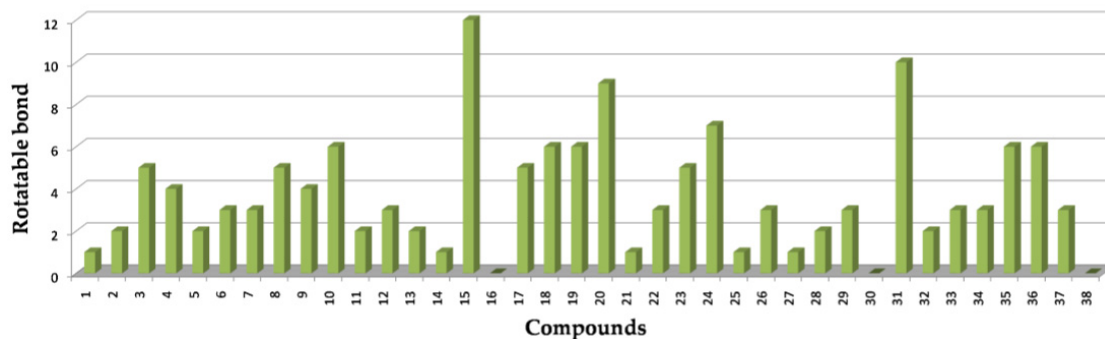
(c)



(d)



(e)



(f)

Figure S2. *In silico* molecular descriptors of compounds 1-38 calculated by Eli Lilly's bioinformatics system. (a) Molecular weight. (b) cLogP. (c) Polar surface area. (d) Number of H-bond donors. (e) Number of H-bond acceptors. (f) Number of rotatable bonds.

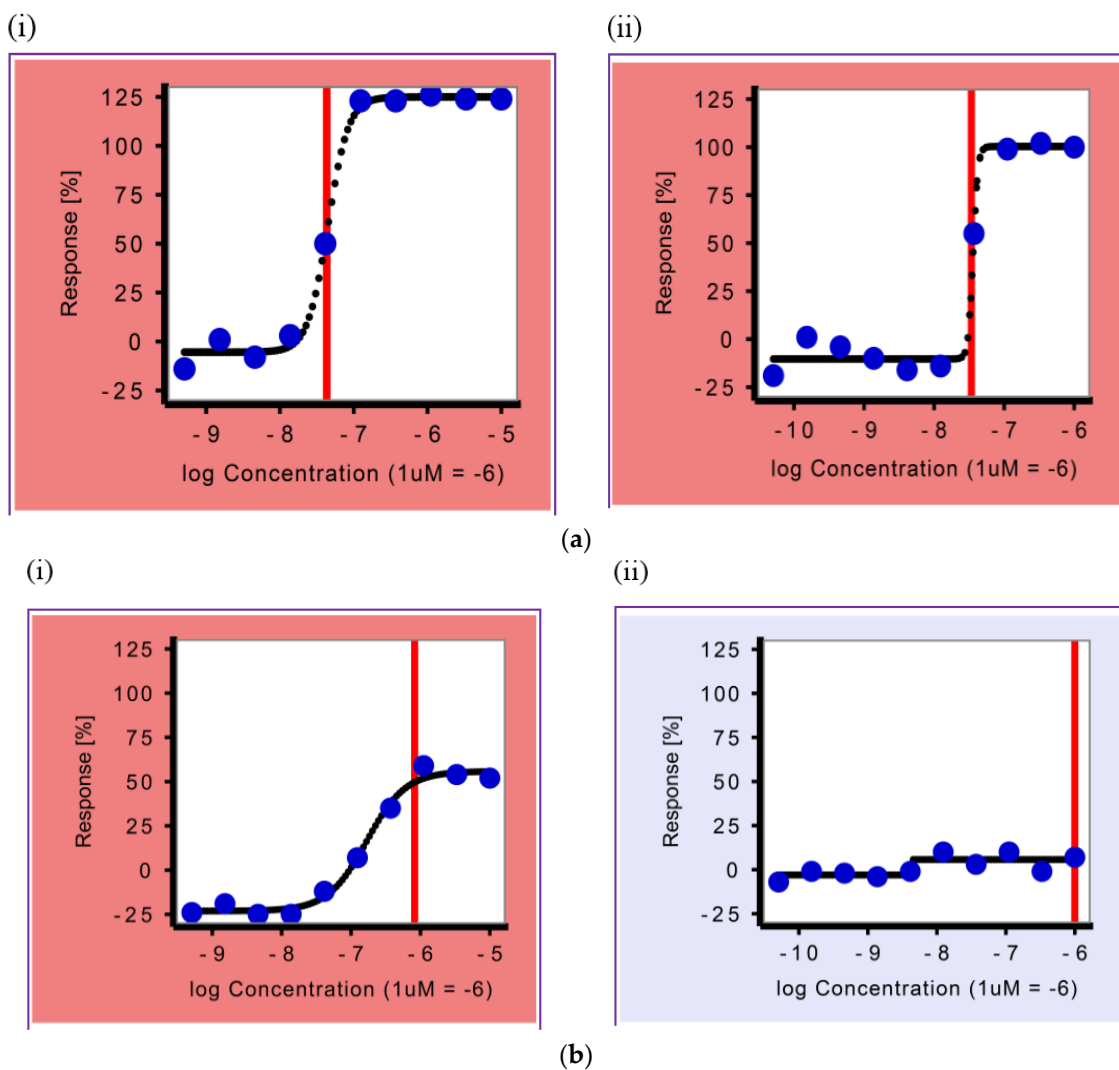


Figure S3. Effects of latrunculin A (1) and sunitinib on the endothelial colony forming cells (ECFCs) in angiogenesis assays. **(a)** Concentration response curve of latrunculin A **(i)** and sunitinib **(ii)** treatments on endothelial colony forming cells (ECFCs) CD31 tube area. **(b)** Concentration response curve of latrunculin A **(i)** and sunitinib **(ii)** treatments on endothelial colony forming cells (ECFCs) CD31 nuclei area.