

SUPPLEMENTARY FIGURE LEGENDS

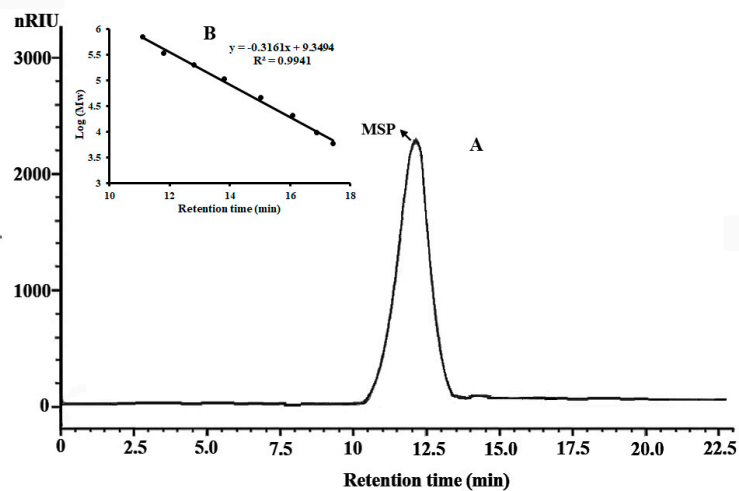


Figure S1. IR spectra of MSP and MSP-Fs.

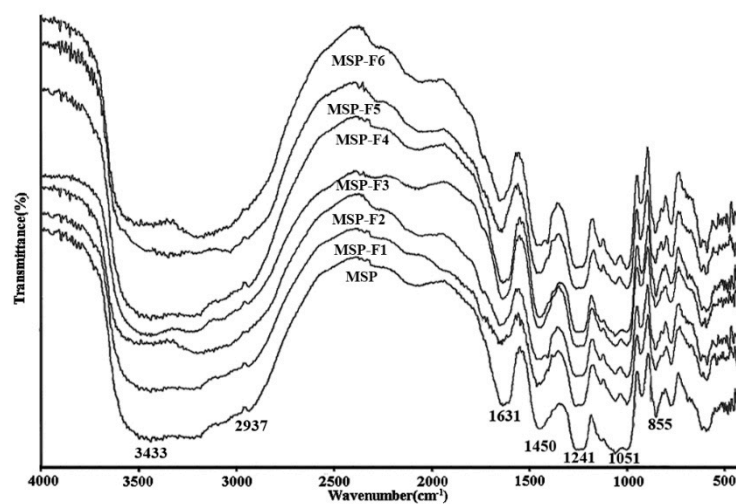
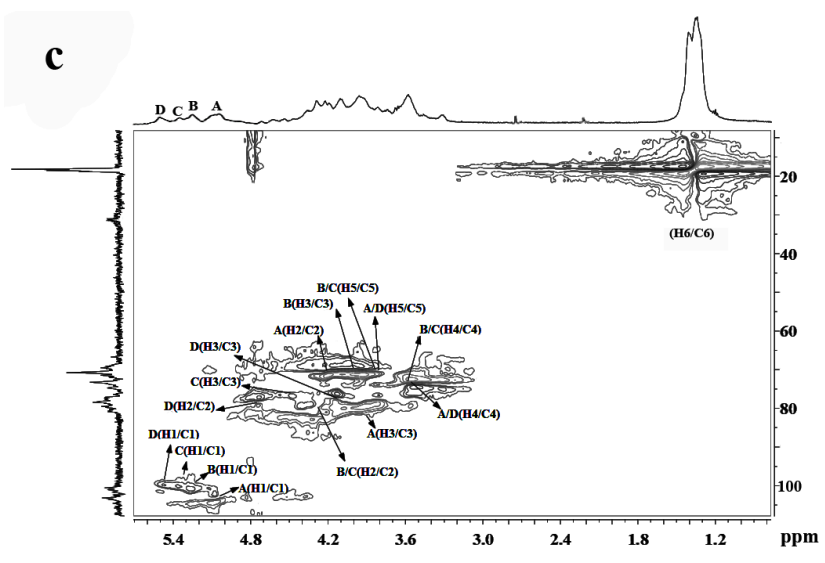
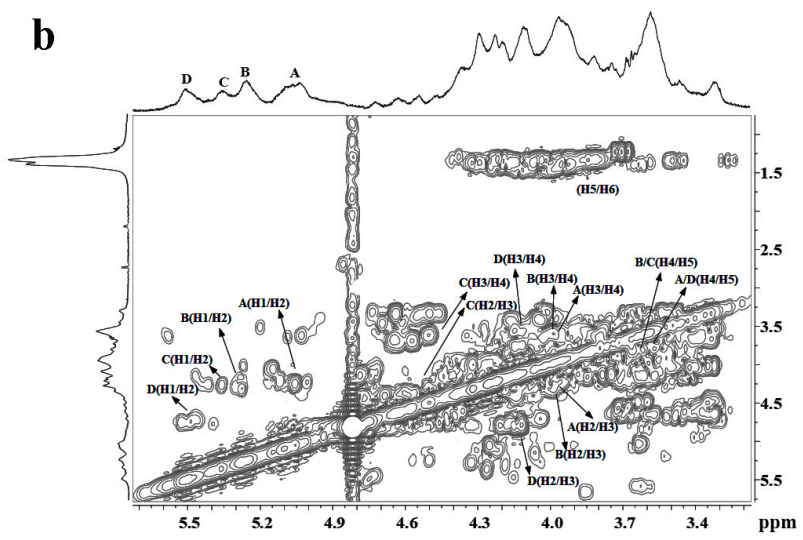
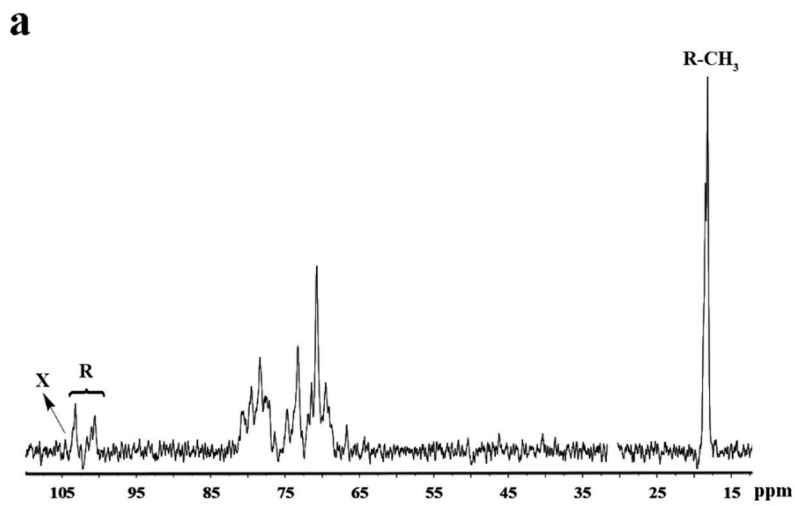


Figure S2. HPGPC chromatogram of MSP and the standard curve of molecular weight. (A)

HPGPC chromatogram of MSP; (B) the standard curve of molecular weight.



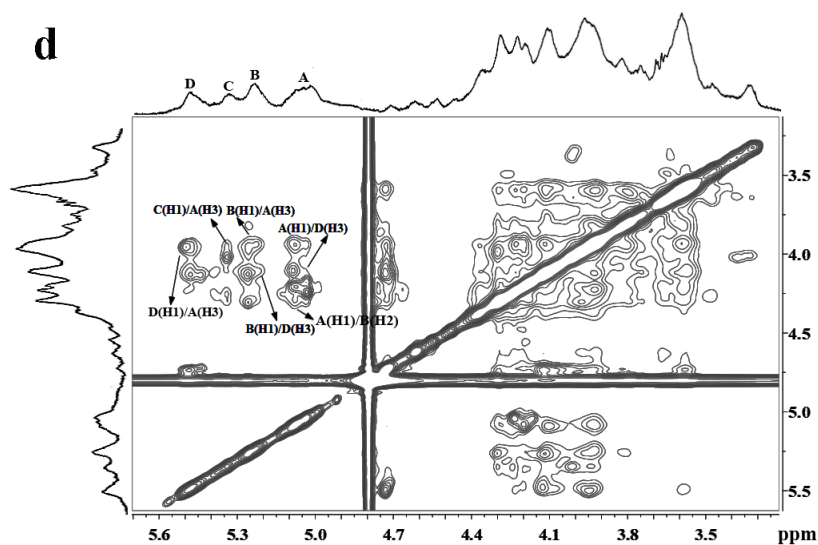


Figure S3. ^{13}C NMR and 2D NMR spectra of MSP. Spectra were performed on an Agilent DD2 500M NMR spectrometer. Chemical shifts are referenced to internal acetone at 2.225 ppm for ^1H and 31.07 ppm for ^{13}C . (a) ^{13}C NMR spectrum; (b) ^1H - ^1H COSY spectrum; (c) ^1H - ^{13}C HSQC spectrum; (d) ^1H - ^1H NOESY spectrum. A–D correspond to $\rightarrow 3)$ - α -L-Rhap-(1 \rightarrow , $\rightarrow 2)$ - α -L-Rhap-(1 \rightarrow , $\rightarrow 2)$ - α -L-Rhap(3SO $_4$)-(1 \rightarrow and $\rightarrow 3)$ - α -L-Rhap(2SO $_4$)-(1 \rightarrow , respectively. Rhap: rhamnopyranose; R: rhamnose; X: xylose.

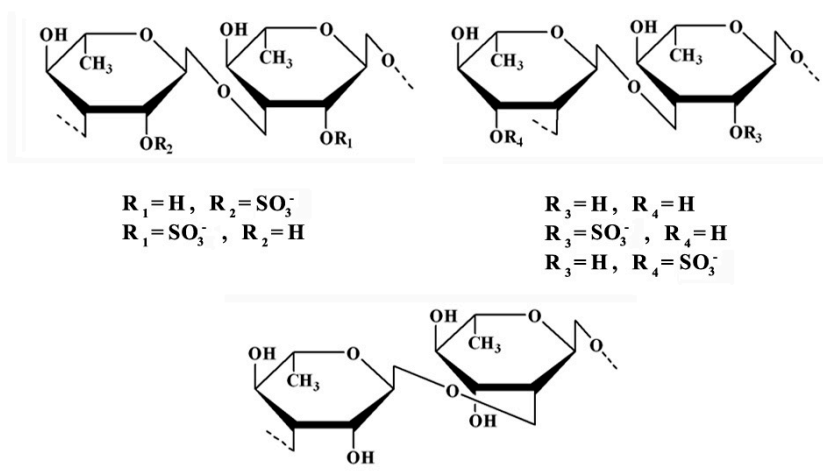


Figure S4. Structures of the main repeating disaccharides of MSP.