

## Supplementary data

# New Ophiobolin Derivatives from the Marine Fungus *Aspergillus flocculosus* and Their Cytotoxicities against Cancer Cells

Byeoung-Kyu Choi <sup>1,2</sup>, Phan Thi Hoai Trinh <sup>3,4</sup>, Hwa-Sun Lee <sup>2</sup>, Byeong-Woo Choi <sup>2</sup>, Jong Soon Kang <sup>5</sup>, Ngo Thi Duy Ngoc <sup>3</sup>, Tran Thi Thanh Van <sup>3,4</sup> and Hee Jae Shin <sup>1,2,\*</sup>

<sup>1</sup> Department of Marine Biotechnology, University of Science and Technology (UST), 217 Gajungro, Yuseong-gu, Daejeon 34113, Korea; choibk4404@kiost.ac

<sup>2</sup> Marine Natural Products Chemistry Laboratory, Korea Institute of Ocean Science and Technology, 385 Haeyang-ro, Yeongdo-gu, Busan 49111, Korea; hwasunlee@kiost.ac (H.-S.L.); choibw0924@gmail.com (B.-W.C.)

<sup>3</sup> Nhatrang Institute of Technology Research and Application, Vietnam Academy of Science and Technology, 02 Hung Vuong, Nha Trang 650000, Vietnam; phanhoaitrinh84@gmail.com (P.T.H.T.); ngoduynhoc@nitra.vast.vn (N.T.D.N); tranthanhvan@nitra.vast.vn (T.T.T.V.)

<sup>4</sup> Graduate University of Science and Technology, Vietnam Academy of Science and Technology, 18 Hoang Quoc Viet, Cau Giay, Ha Noi 100000, Vietnam

<sup>5</sup> Laboratory Animal Resource Center, Korea Research Institute of Bioscience and Biotechnology, 30 Yeongudanjiro, Cheongju 28116, Korea; kanjon@kribb.re.kr

\* Correspondence: shinhj@kiost.ac.kr; Tel.: +82-51-664-3341; Fax: +82-51-664-3340

# Contents

Figure S1. HRESIMS data of 14,15-dehydro-6- <i>epi</i> -ophiobolin K (1). -----	4
Figure S2. <sup>1</sup> H NMR spectrum of 14,15-dehydro-6- <i>epi</i> -ophiobolin K (1). -----	5
Figure S3. <sup>13</sup> C NMR spectrum of 14,15-dehydro-6- <i>epi</i> -ophiobolin K (1). -----	6
Figure S4. <sup>1</sup> H- <sup>1</sup> H COSY spectrum of 14,15-dehydro-6- <i>epi</i> -ophiobolin K (1). -----	7
Figure S5. HSQC spectrum of 14,15-dehydro-6- <i>epi</i> -ophiobolin K (1). -----	8
Figure S6. HMBC spectrum of 14,15-dehydro-6- <i>epi</i> -ophiobolin K (1). -----	9
Figure S7. NOESY spectrum of 14,15-dehydro-6- <i>epi</i> -ophiobolin K (1). -----	10
Figure S8. HRESIMS data of 14,15-dehydro-ophiobolin K (2). -----	11
Figure S9. <sup>1</sup> H NMR spectrum of 14,15-dehydro-ophiobolin K (2). -----	12
Figure S10. <sup>13</sup> C NMR spectrum of 14,15-dehydro-ophiobolin K (2). -----	13
Figure S11. <sup>1</sup> H- <sup>1</sup> H COSY spectrum of 14,15-dehydro-ophiobolin K (2). -----	14
Figure S12. HSQC spectrum of 14,15-dehydro-ophiobolin K (2). -----	15
Figure S13. HMBC spectrum of 14,15-dehydro-ophiobolin K (2). -----	16
Figure S14. NOESY spectrum of 14,15-dehydro-ophiobolin K (2). -----	17
Figure S15. HRESIMS data of 14,15-dehydro-6- <i>epi</i> -ophiobolin G (3). -----	18
Figure S16. <sup>1</sup> H NMR spectrum of 14,15-dehydro-6- <i>epi</i> -ophiobolin G (3). -----	19
Figure S17. <sup>13</sup> C NMR spectrum of 14,15-dehydro-6- <i>epi</i> -ophiobolin G (3). -----	20
Figure S18. <sup>1</sup> H- <sup>1</sup> H COSY spectrum of 14,15-dehydro-6- <i>epi</i> -ophiobolin G (3). -----	21
Figure S19. HSQC spectrum of 14,15-dehydro-6- <i>epi</i> -ophiobolin G (3). -----	22
Figure S20. HMBC spectrum of 14,15-dehydro-6- <i>epi</i> -ophiobolin G (3). -----	23
Figure S21. NOESY spectrum of 14,15-dehydro-6- <i>epi</i> -ophiobolin G (3). -----	24
Figure S22. HRESIMS data of 14,15-dehydro-ophiobolin G (4). -----	25
Figure S23. <sup>1</sup> H NMR spectrum of 14,15-dehydro-ophiobolin G (4). -----	26
Figure S24. <sup>13</sup> C NMR spectrum of 14,15-dehydro-ophiobolin G (4). -----	27
Figure S25. <sup>1</sup> H- <sup>1</sup> H COSY spectrum of 14,15-dehydro-ophiobolin G (4). -----	28
Figure S26. HSQC spectrum of 14,15-dehydro-ophiobolin G (4). -----	29
Figure S27. HMBC spectrum of 14,15-dehydro-ophiobolin G (4). -----	30
Figure S28. NOESY spectrum of 14,15-dehydro-ophiobolin G (4). -----	31

Figure S29. HRESIMS data of 14,15-dehydro-(Z)-14-ophiobolin G (5). -----	32
Figure S30. <sup>1</sup> H NMR spectrum of 14,15-dehydro-(Z)-14-ophiobolin G (5). -----	33
Figure S31. <sup>13</sup> C NMR spectrum of 14,15-dehydro-(Z)-14-ophiobolin G (5). -----	34
Figure S32. <sup>1</sup> H- <sup>1</sup> H COSY spectrum of 14,15-dehydro-(Z)-14-ophiobolin G (5). -----	35
Figure S33. HSQC spectrum of 14,15-dehydro-(Z)-14-ophiobolin G (5). -----	36
Figure S34. HMBC spectrum of 14,15-dehydro-(Z)-14-ophiobolin G (5). -----	37
Figure S35. NOESY spectrum of 14,15-dehydro-(Z)-14-ophiobolin G (5). -----	38
Figure S36. LRMS data of 6- <i>epi</i> -ophiobolin C (6). -----	39
Figure S37. <sup>1</sup> H NMR spectrum of 6- <i>epi</i> -ophiobolin C (6). -----	39
Figure S38. LRMS data of Ophiobolin C (7). -----	40
Figure S39. <sup>1</sup> H NMR spectrum of Ophiobolin C (7). -----	40
Figure S40. LRMS data of 6- <i>epi</i> -ophiobolin N (8). -----	41
Figure S41. <sup>1</sup> H NMR spectrum of 6- <i>epi</i> -ophiobolin N (8). -----	41
Figure S42. LRMS data of Ophiobolin N (9). -----	42
Figure S43. <sup>1</sup> H NMR spectrum of Ophiobolin N (9). -----	42

### Elemental Composition Report

Single Mass Analysis  
Tolerance = 5.0 PPM / DBE: min = -1.5, max = 50.0  
Element prediction: Off  
Number of isotope peaks used for i-FIT = 3

Monoisotopic Mass, Even Electron Ions  
41 formula(e) evaluated with 1 results within limits (all results (up to 1000) for each mass)

Elements Used:

C: 1-30 H: 1-50 O: 1-5 Na: 0-1

Minimum: -1.5

Maximum: 500.0 5.0 50.0

Mass	Calc. Mass	mDa	PPM	DBE	i-FIT	Norm	Conf(%)	Formula
405.2405	405.2406	-0.1	-0.2	8.5	953.0	n/a	n/a	C <sub>25</sub> H <sub>34</sub> O <sub>3</sub> Na

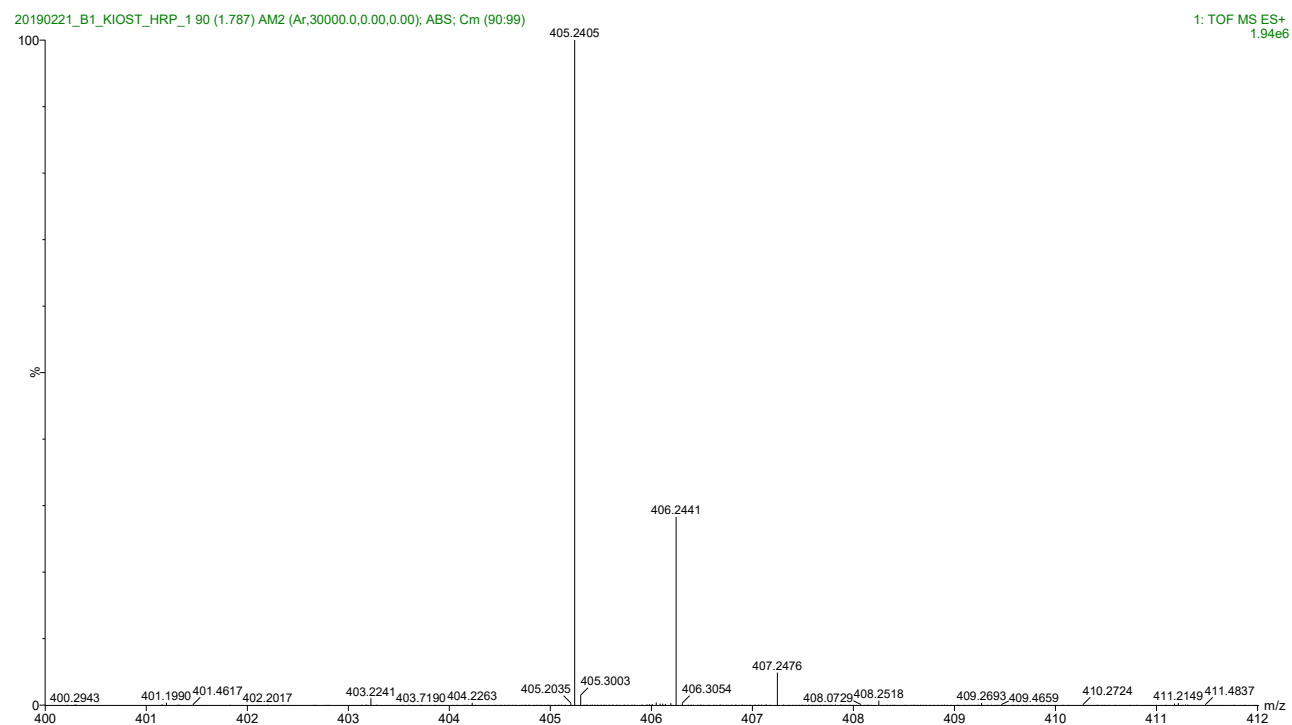


Figure S1. HRESIMS data of 14,15-dehydro-6-epi-ophiobolin K (1).

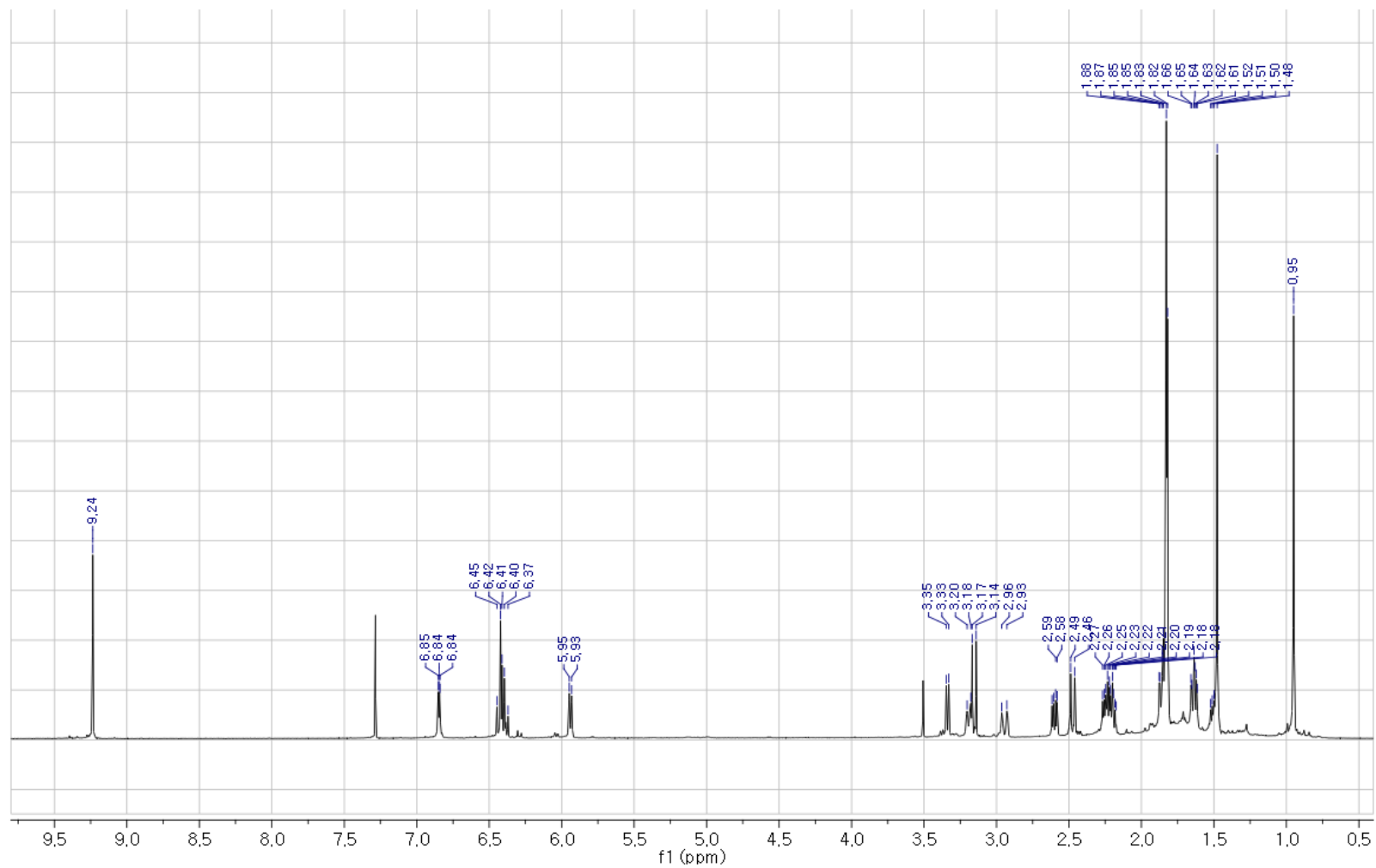


Figure S2.  $^1\text{H}$  NMR spectrum of 14,15-dehydro-6-*epi*-ophiobolin K (**1**).

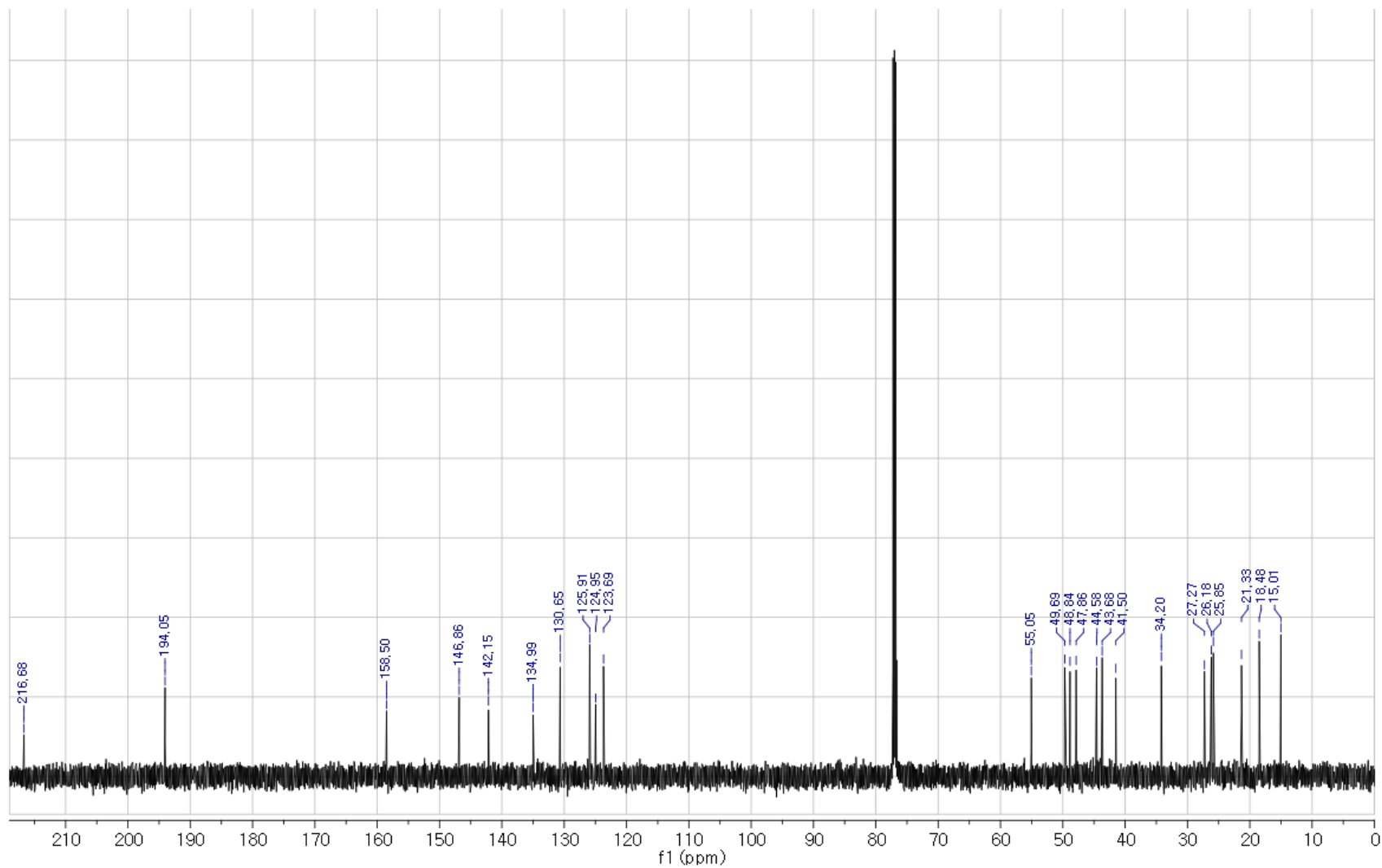


Figure S3. <sup>13</sup>C NMR spectrum of 14,15-dehydro-6-*epi*-ophiobolin K (**1**).

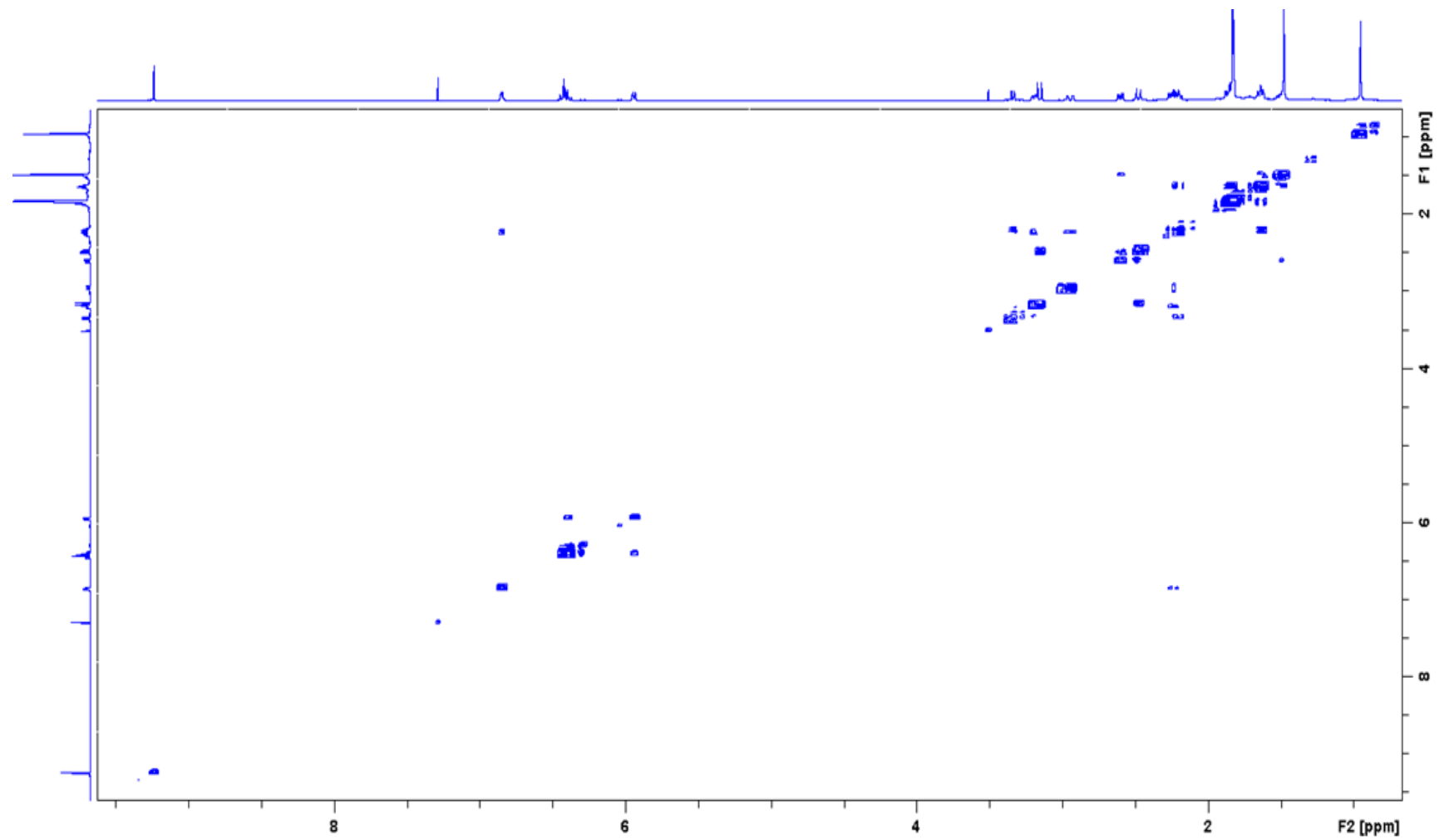


Figure S4.  $^1\text{H}$ - $^1\text{H}$  COSY spectrum of 14,15-dehydro-6-*epi*-ophiobolin K (**1**).

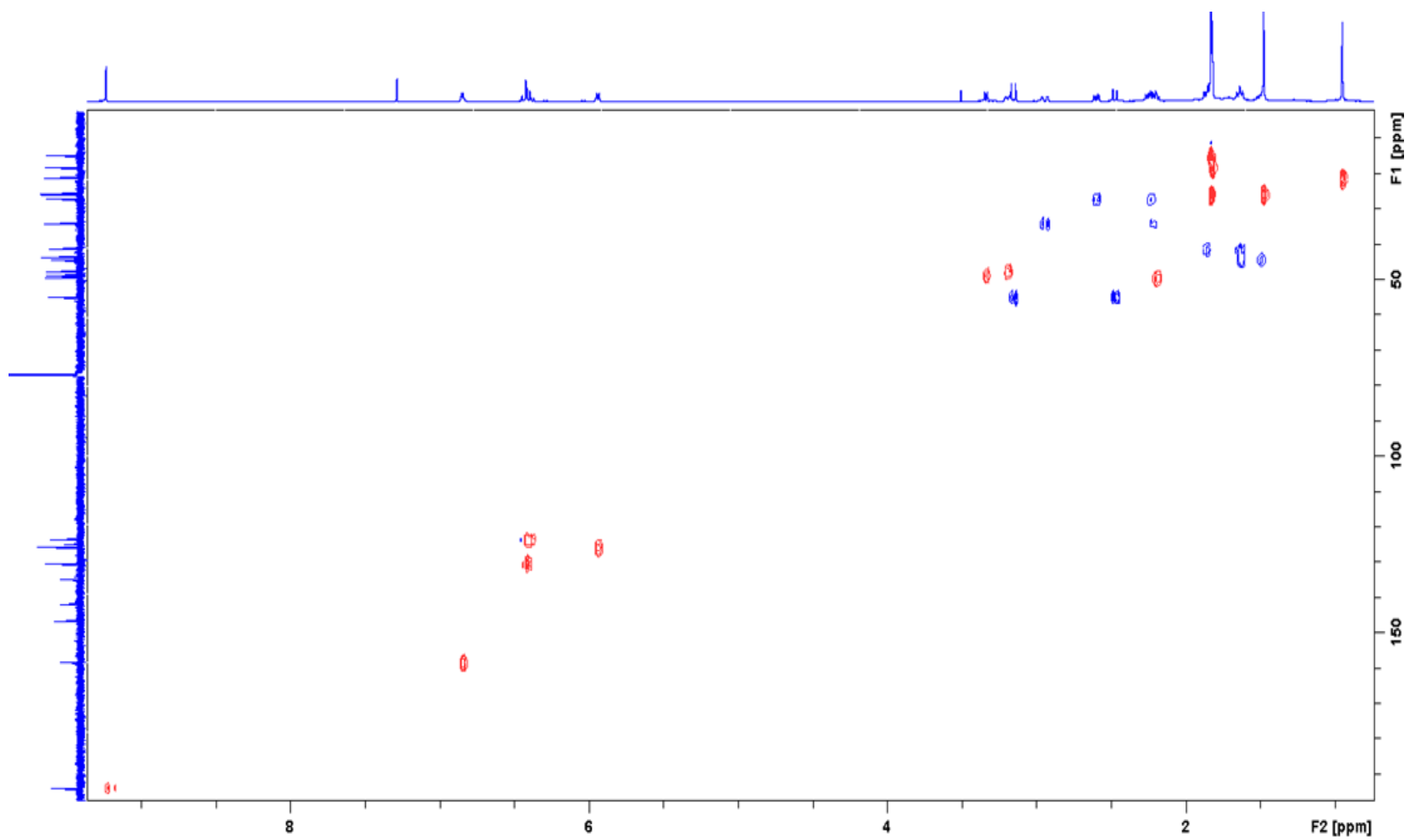


Figure S5. HSQC spectrum of 14,15-dehydro-6-*epi*-ophiobolin K (**1**).



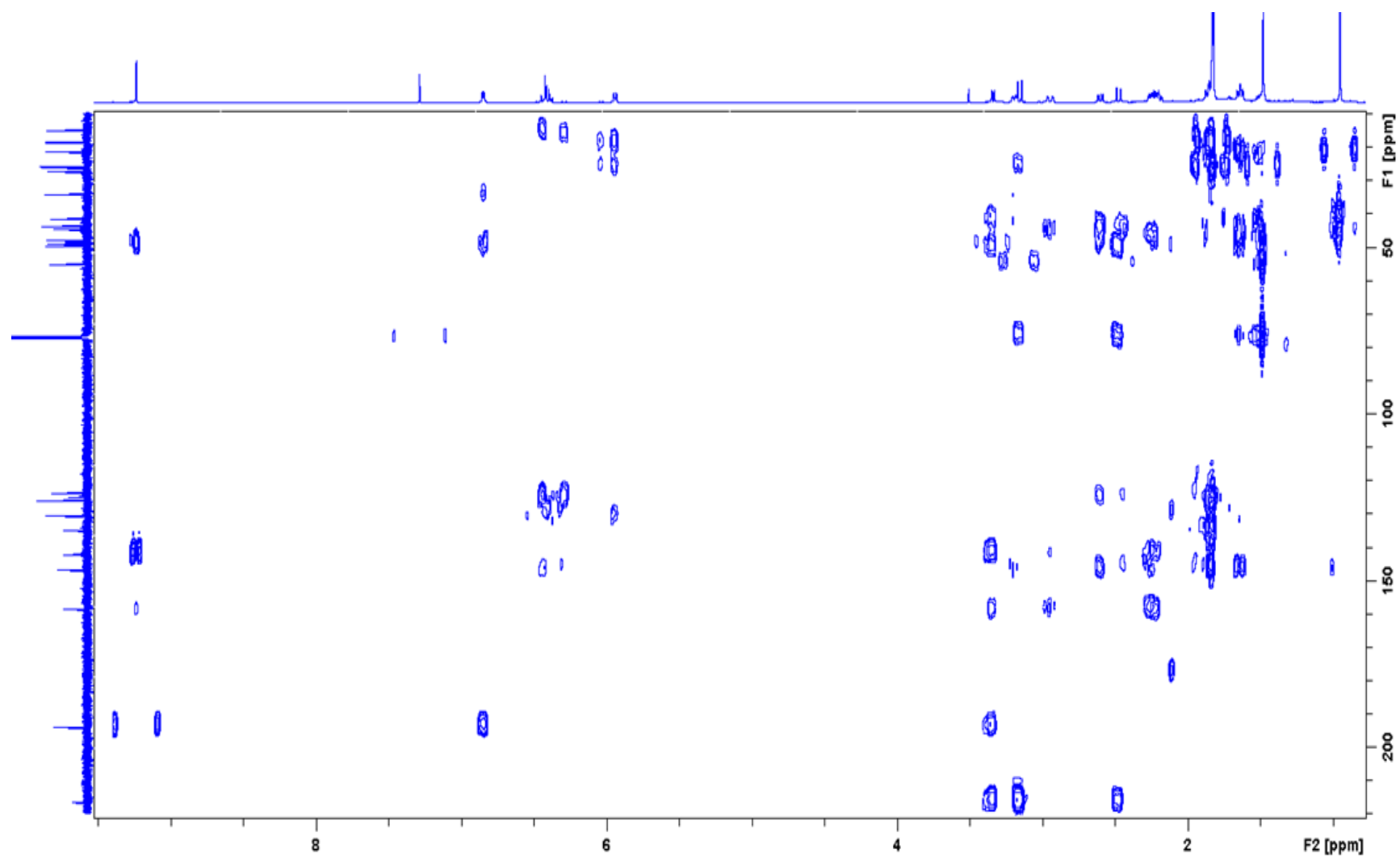


Figure S6. HMBC spectrum of 14,15-dehydro-6-*epi*-ophiobolin K (**1**).

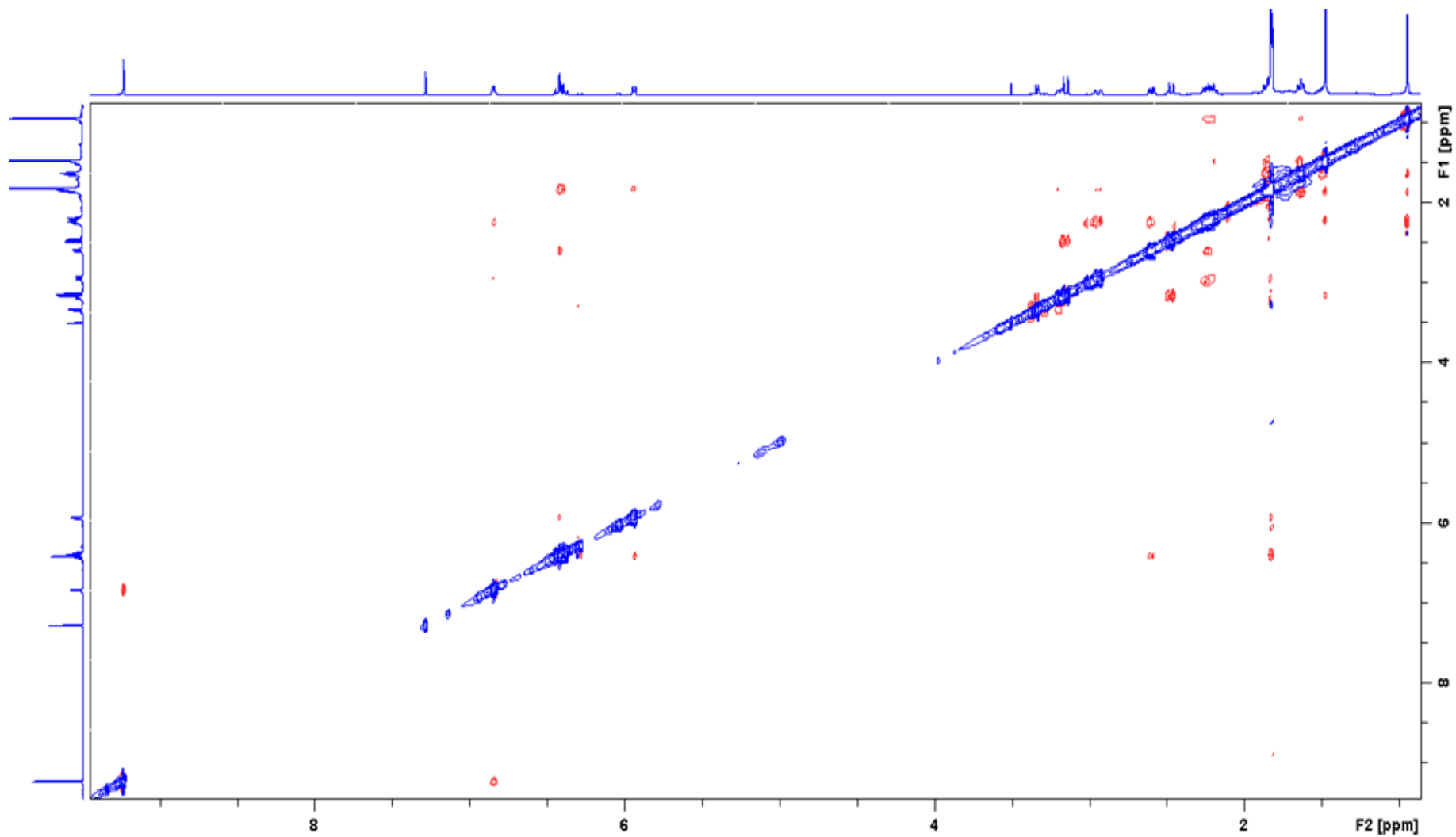


Figure S7. NOESY spectrum of 14,15-dehydro-6-*epi*-ophiobolin K (**1**).

## Elemental Composition Report

Single Mass Analysis

Tolerance = 5.0 PPM / DBE: min = -1.5, max = 50.0

Element prediction: Off

Number of isotope peaks used for i-FIT = 3

Monoisotopic Mass, Even Electron Ions

41 formula(e) evaluated with 1 results within limits (all results (up to 1000) for each mass)

Elements Used:

C: 1-30 H: 1-50 O: 1-5 Na: 0-1

Minimum:

Maximum: 500.0 5.0 -1.5

Mass	Calc. Mass	mDa	PPM	DBE	i-FIT	Norm	Conf(%)	Formula
405.2404	405.2406	-0.2	-0.5	8.5	1146.9	n/a	n/a	C <sub>25</sub> H <sub>34</sub> O <sub>3</sub> Na

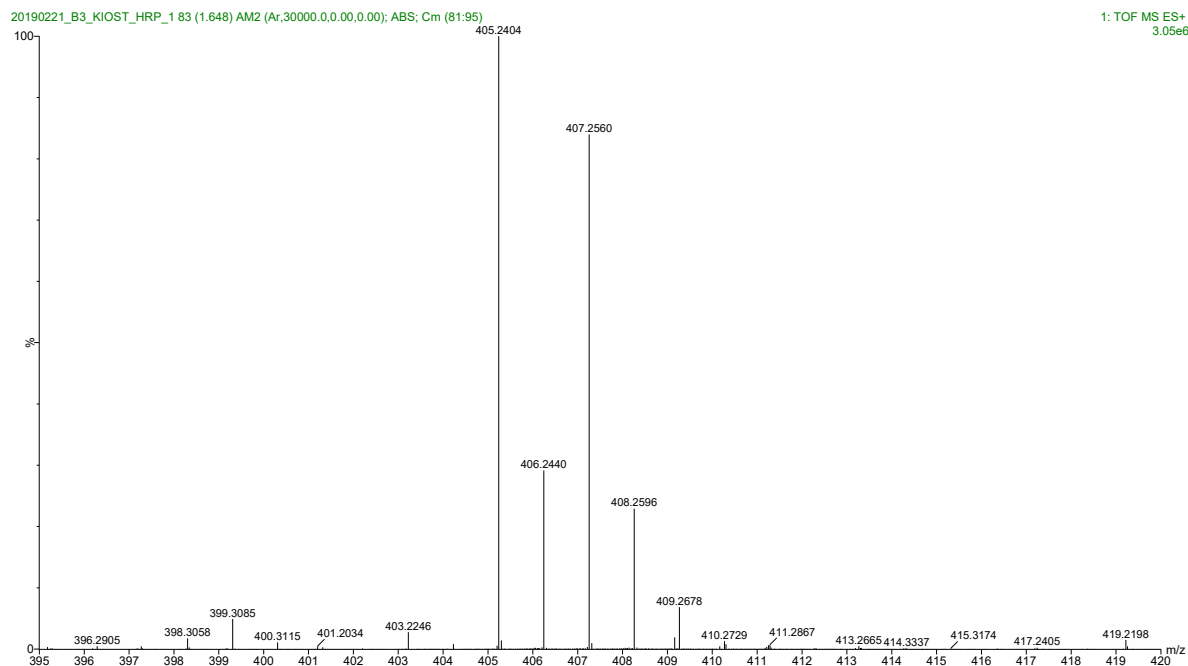


Figure S8. HRESIMS data of 14,15-dehydro-ophiobolin K (2).

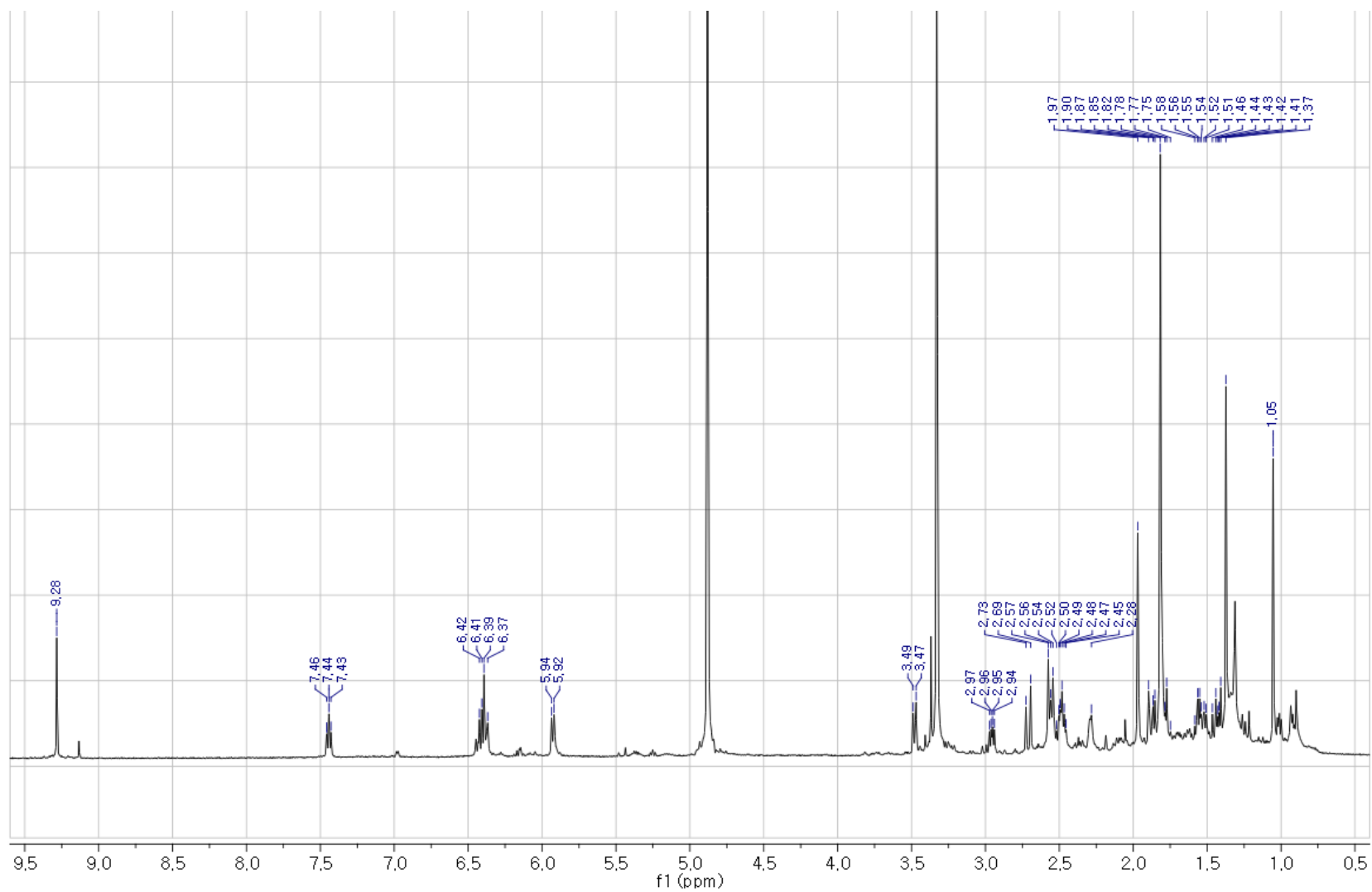


Figure S9.  $^1\text{H}$  NMR spectrum of 14,15-dehydro-ophiobolin K (**2**).

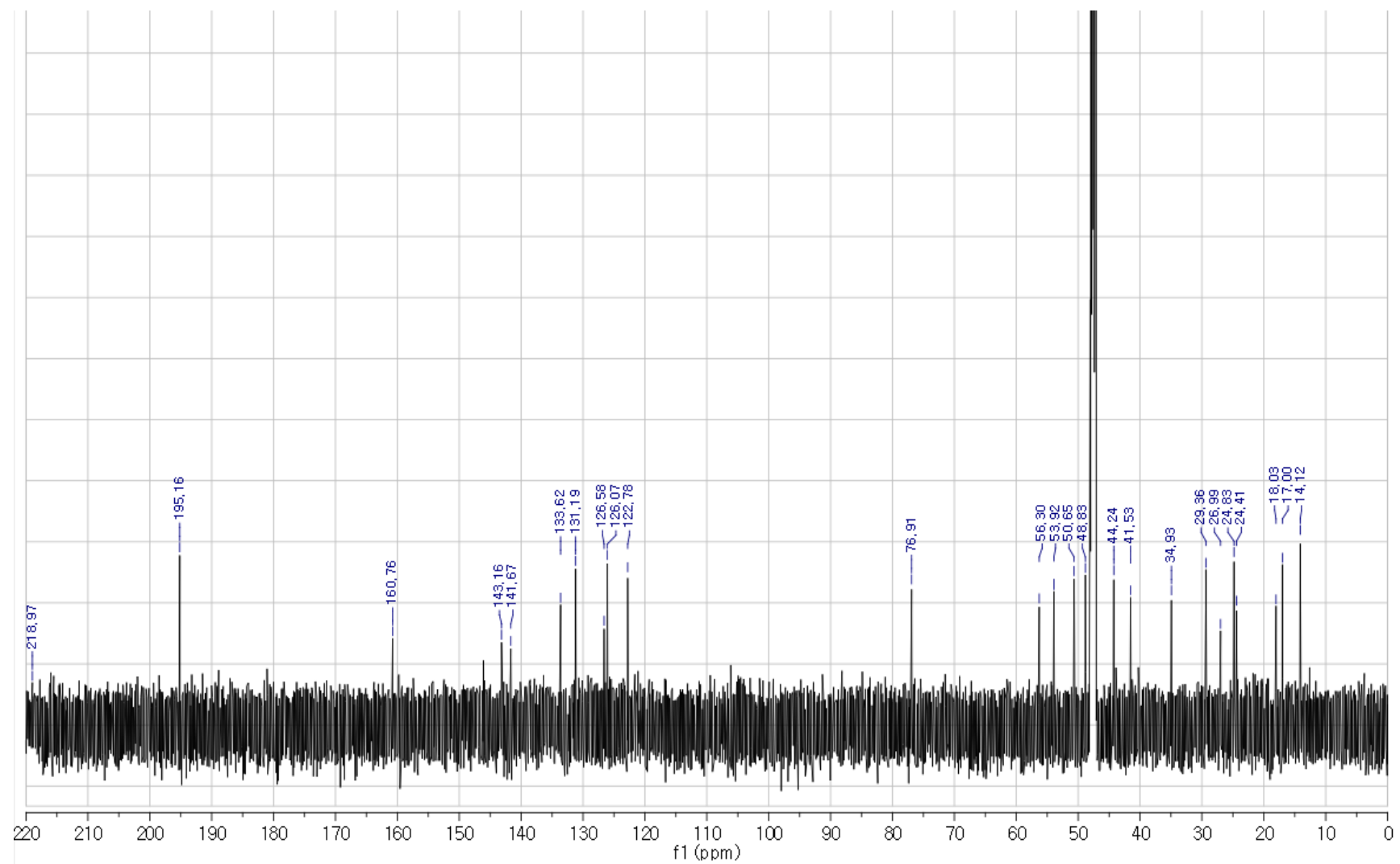


Figure S10. <sup>13</sup>C NMR spectrum of 14,15-dehydro-ophiobolin K (2).

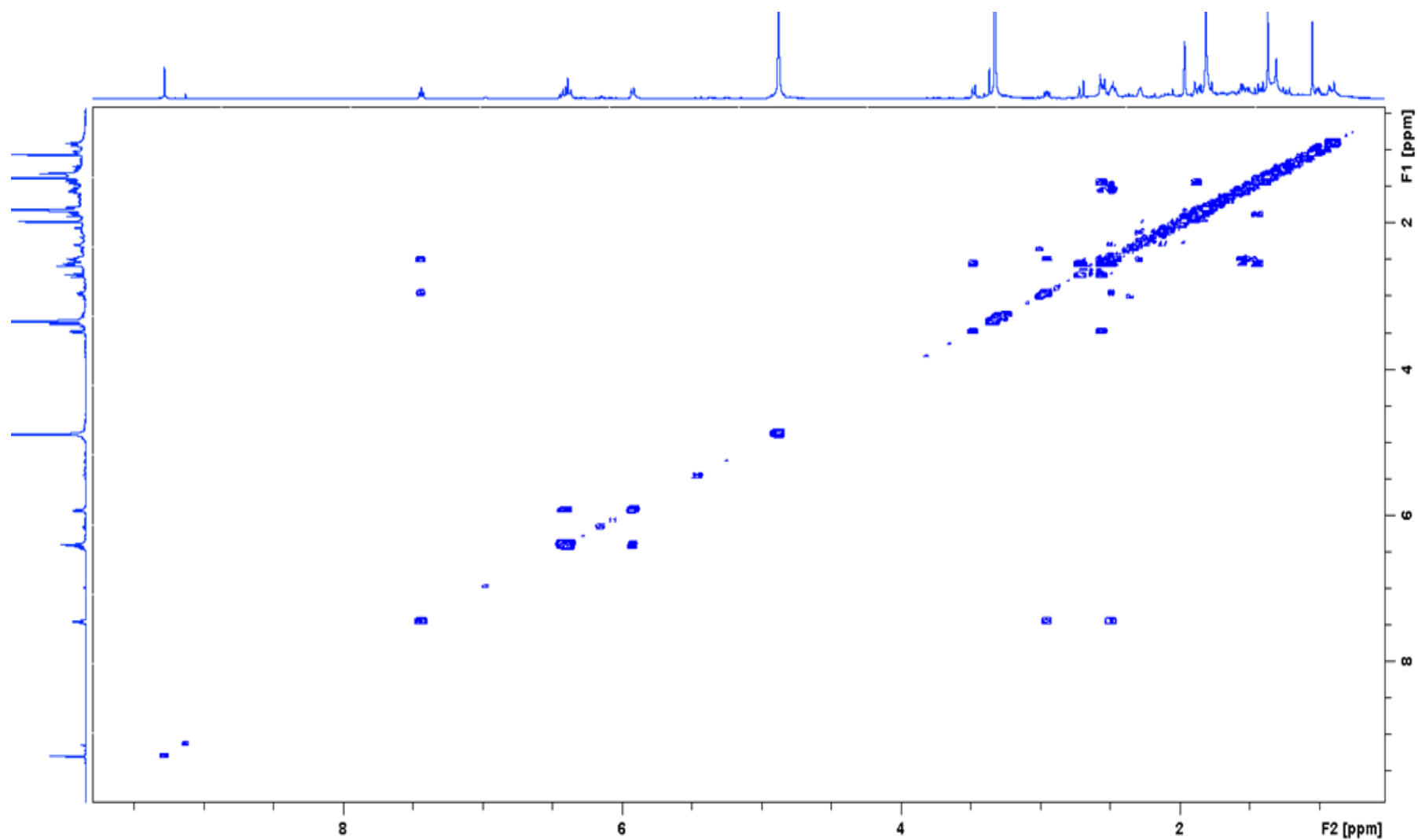


Figure S11.  $^1\text{H}$ - $^1\text{H}$  COSY spectrum of 14,15-dehydro-ophiobolin K (2).

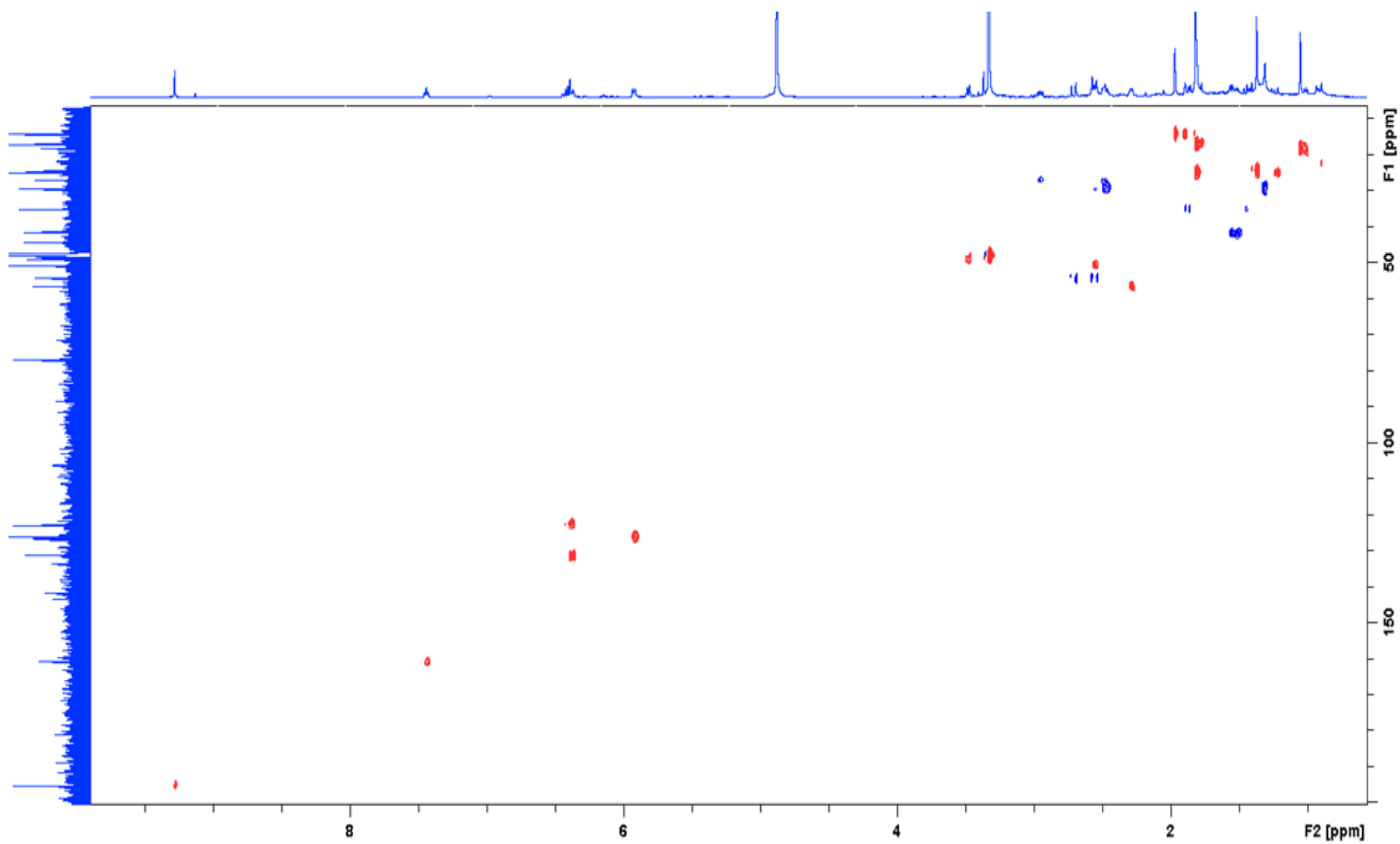


Figure S12. HSQC spectrum of 14,15-dehydro-ophiobolin K (2).

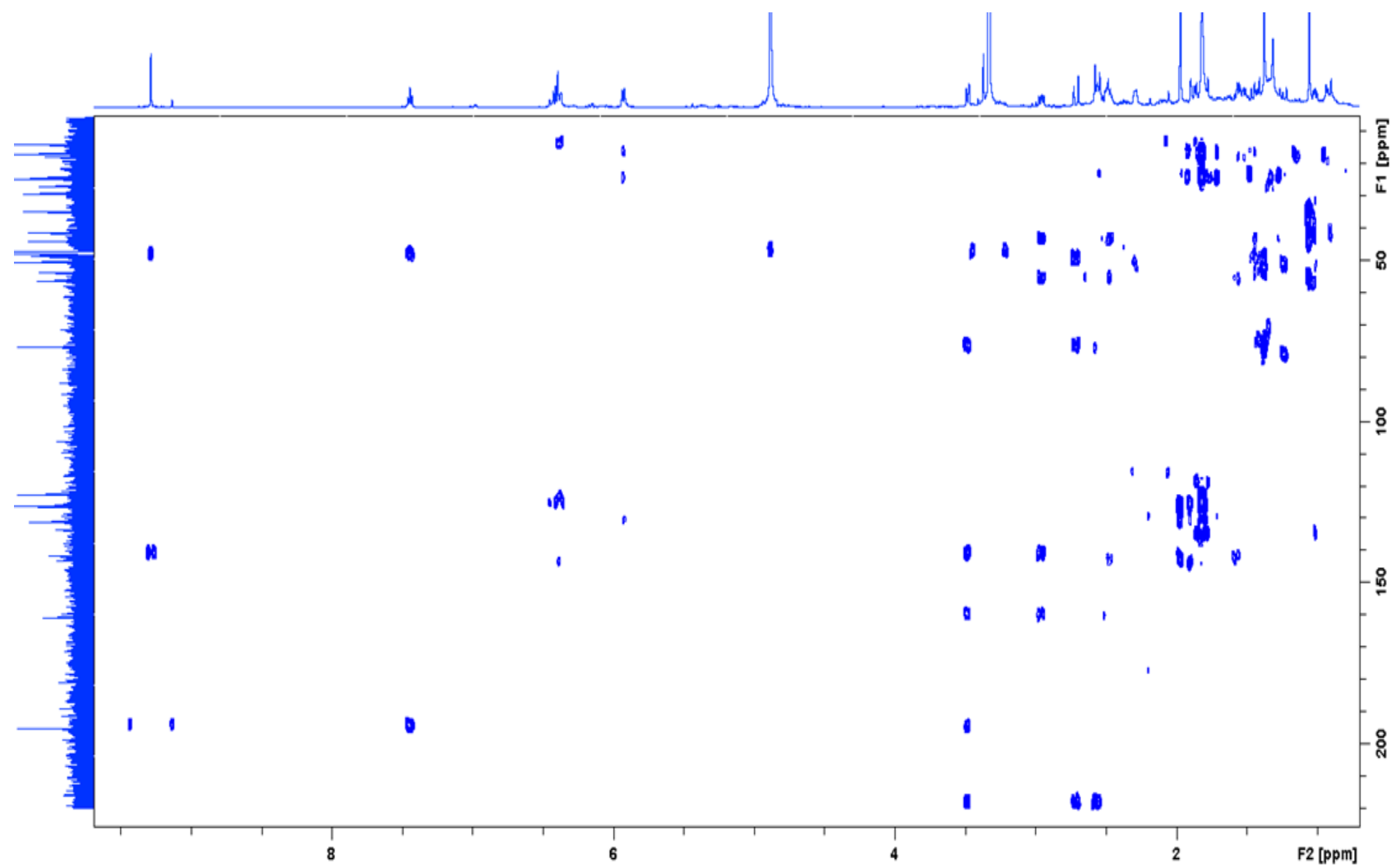


Figure S13. HMBC spectrum of 14,15-dehydro-ophiobolin K (2).



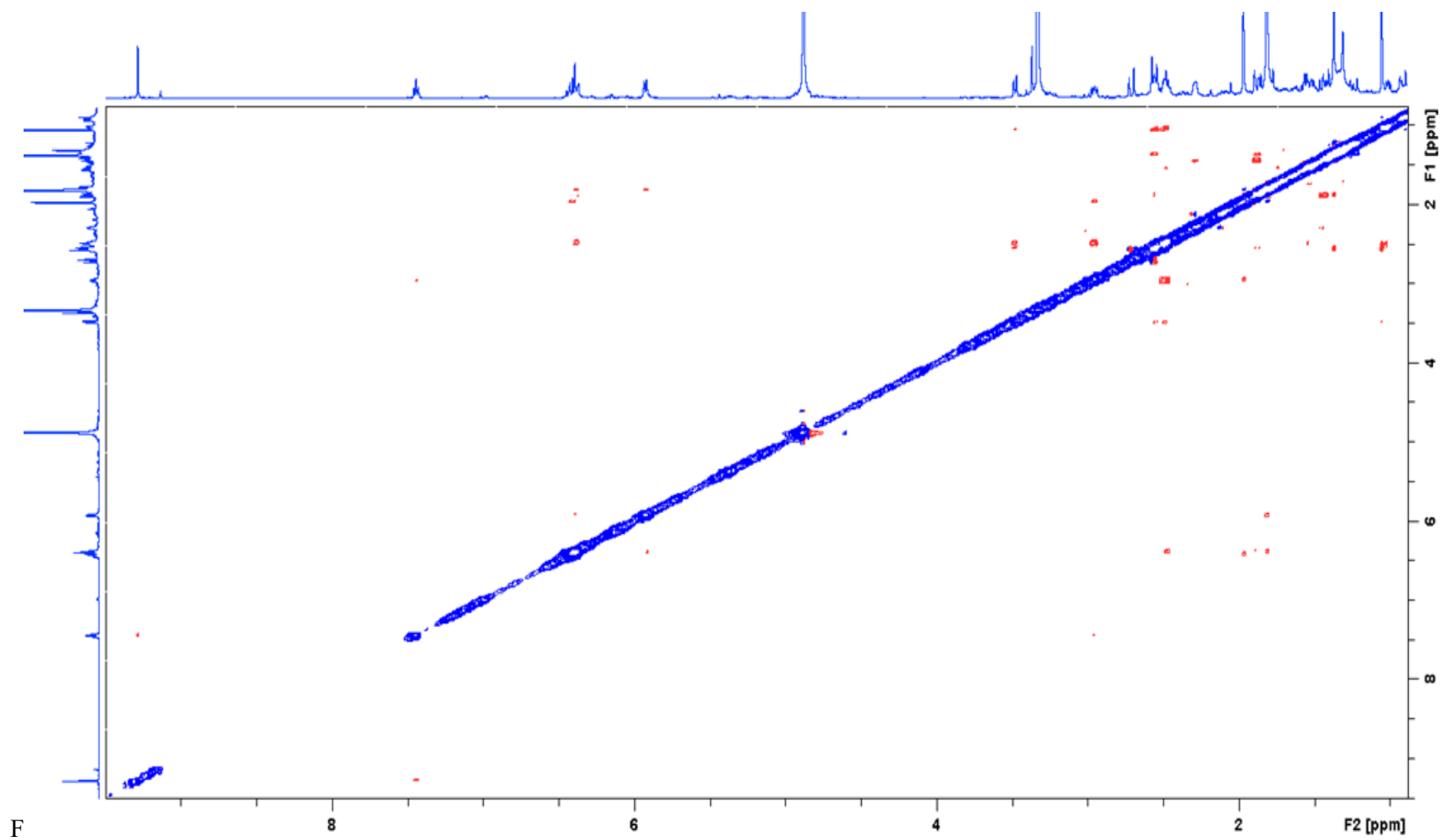


Figure S14. NOESY spectrum of 14,15-dehydro-ophiobolin K (2).

### Elemental Composition Report

Single Mass Analysis  
Tolerance = 5.0 PPM / DBE: min = -1.5, max = 50.0  
Element prediction: Off  
Number of isotope peaks used for i-FIT = 3

Monoisotopic Mass, Even Electron Ions  
82 formula(e) evaluated with 1 results within limits (all results (up to 1000) for each mass)

Elements Used:

C: 1-55 H: 1-80 O: 1-10 Na: 0-1

Minimum: -1.5

Maximum: 500.0 5.0 50.0

Mass	Calc. Mass	mDa	PPM	DBE	i-FIT	Norm	Conf(%)	Formula
387.2301	387.2300	0.1	0.3	9.5	1107.4	n/a	n/a	C <sub>25</sub> H <sub>32</sub> O <sub>2</sub> Na

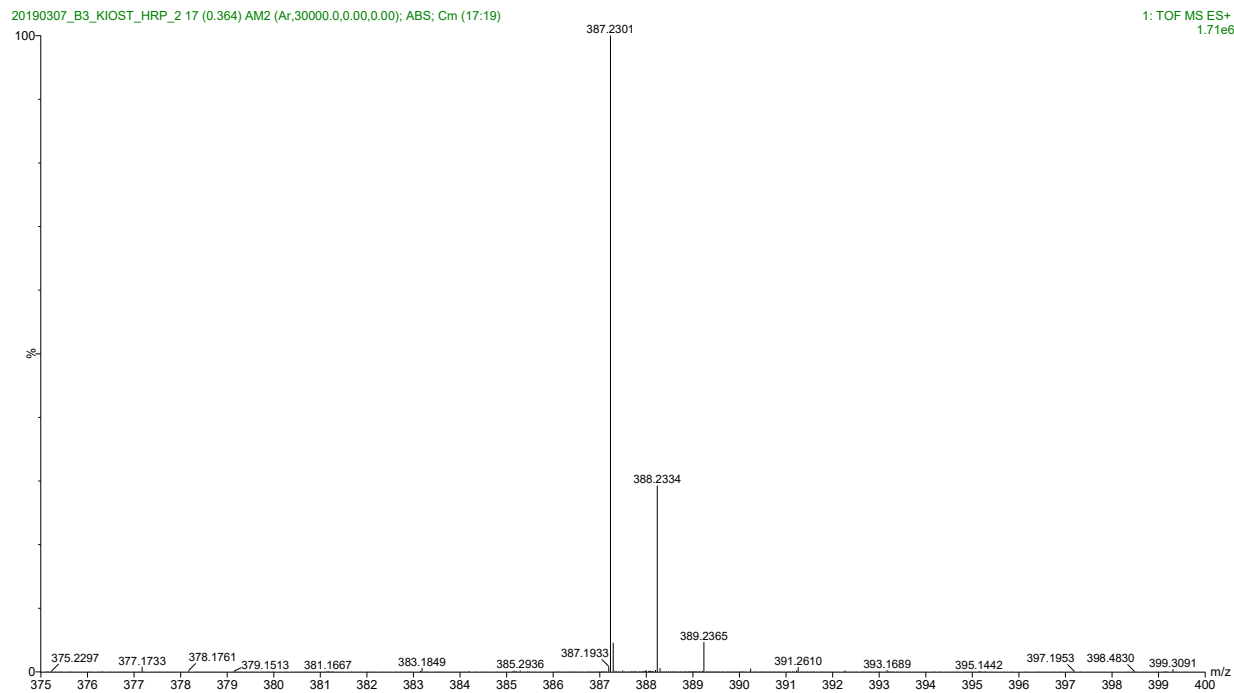


Figure S15. HRESIMS data of 14,15-dehydro-6-*epi*-ophiobolin G (**3**).

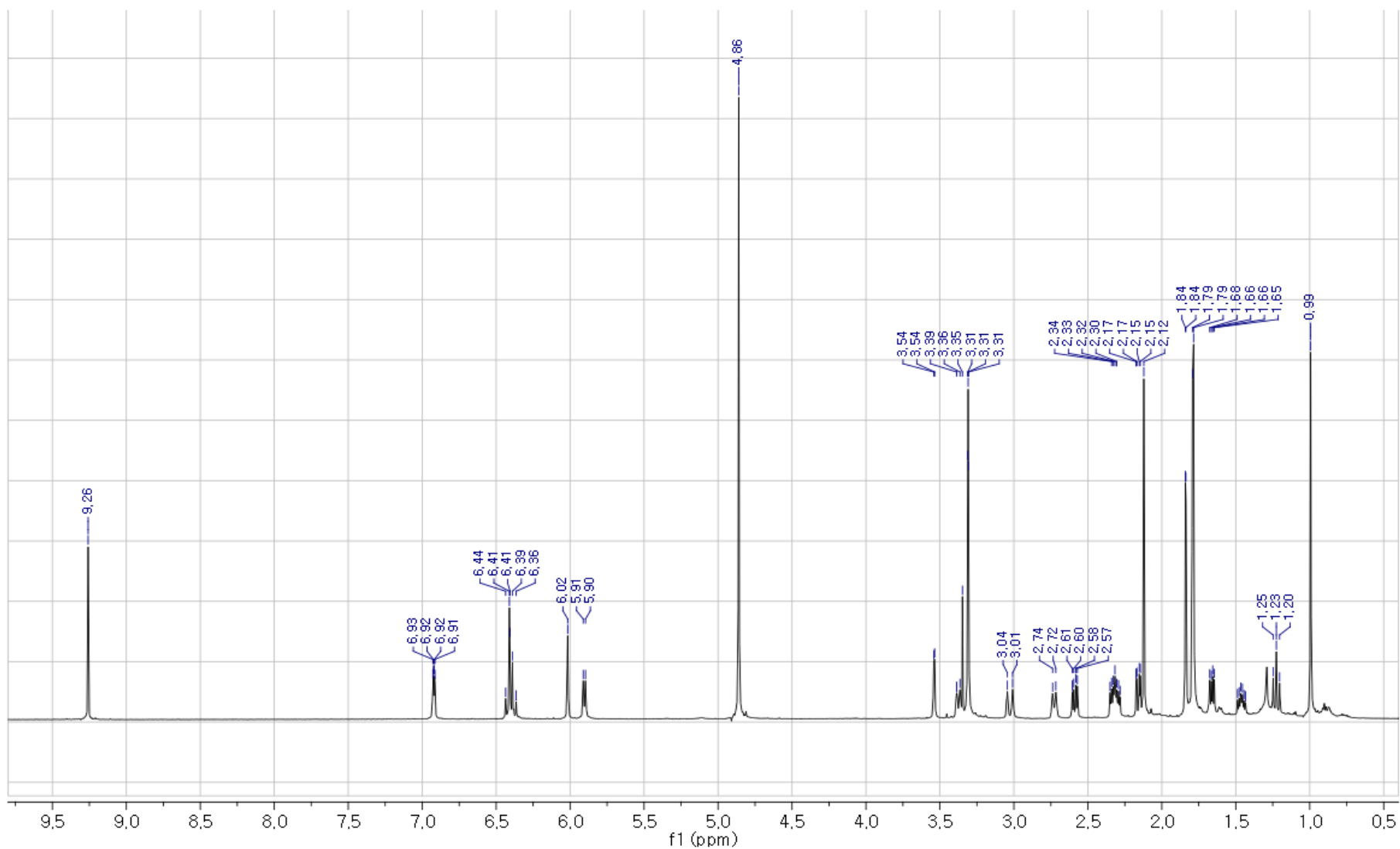


Figure S16.  $^1\text{H}$  NMR spectrum of 14,15-dehydro-6-*epi*-ophiobolin G (3).

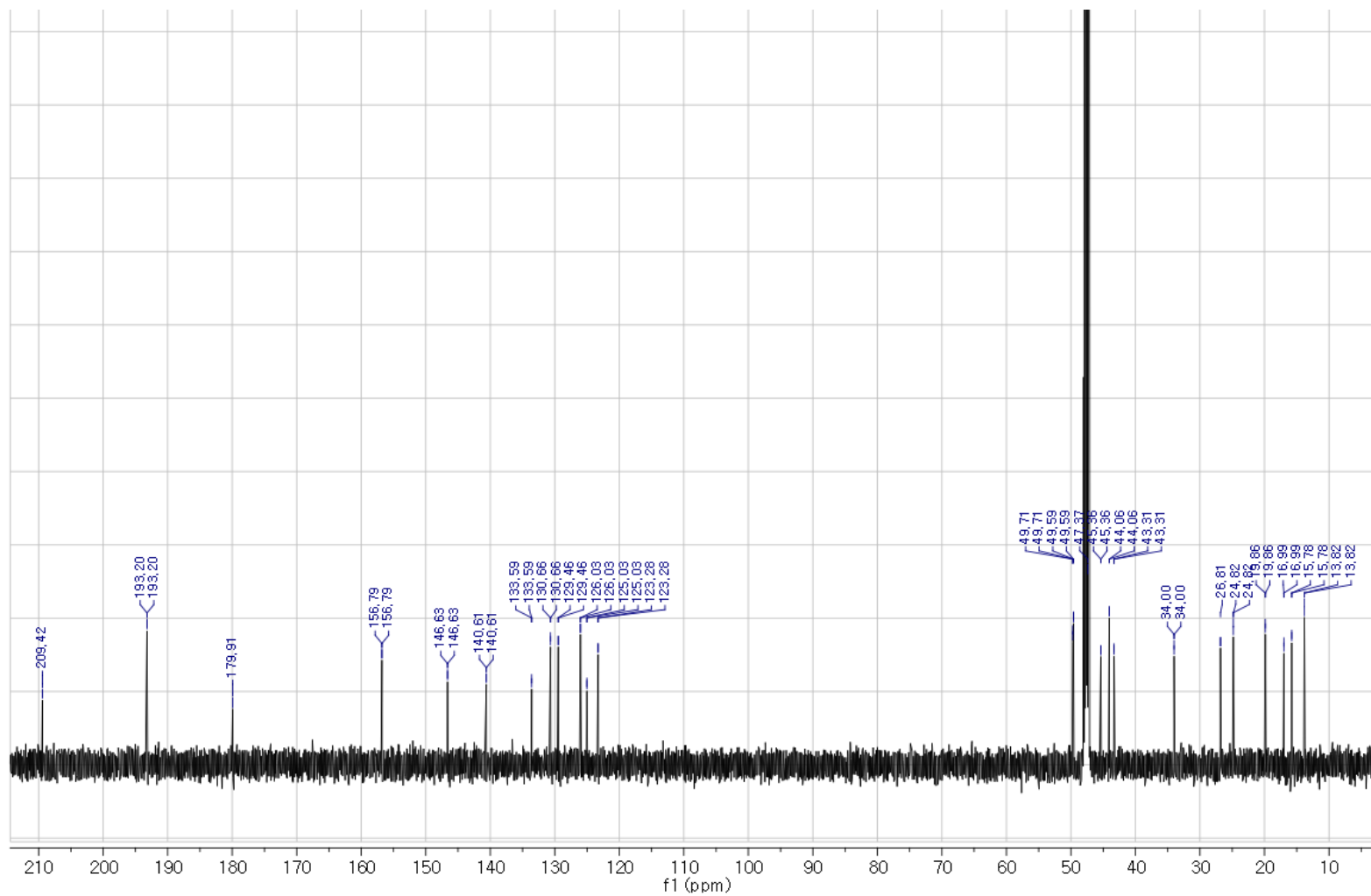


Figure S17.  $^{13}\text{C}$  NMR spectrum of 14,15-dehydro-6-*epi*-ophiobolin G (**3**).

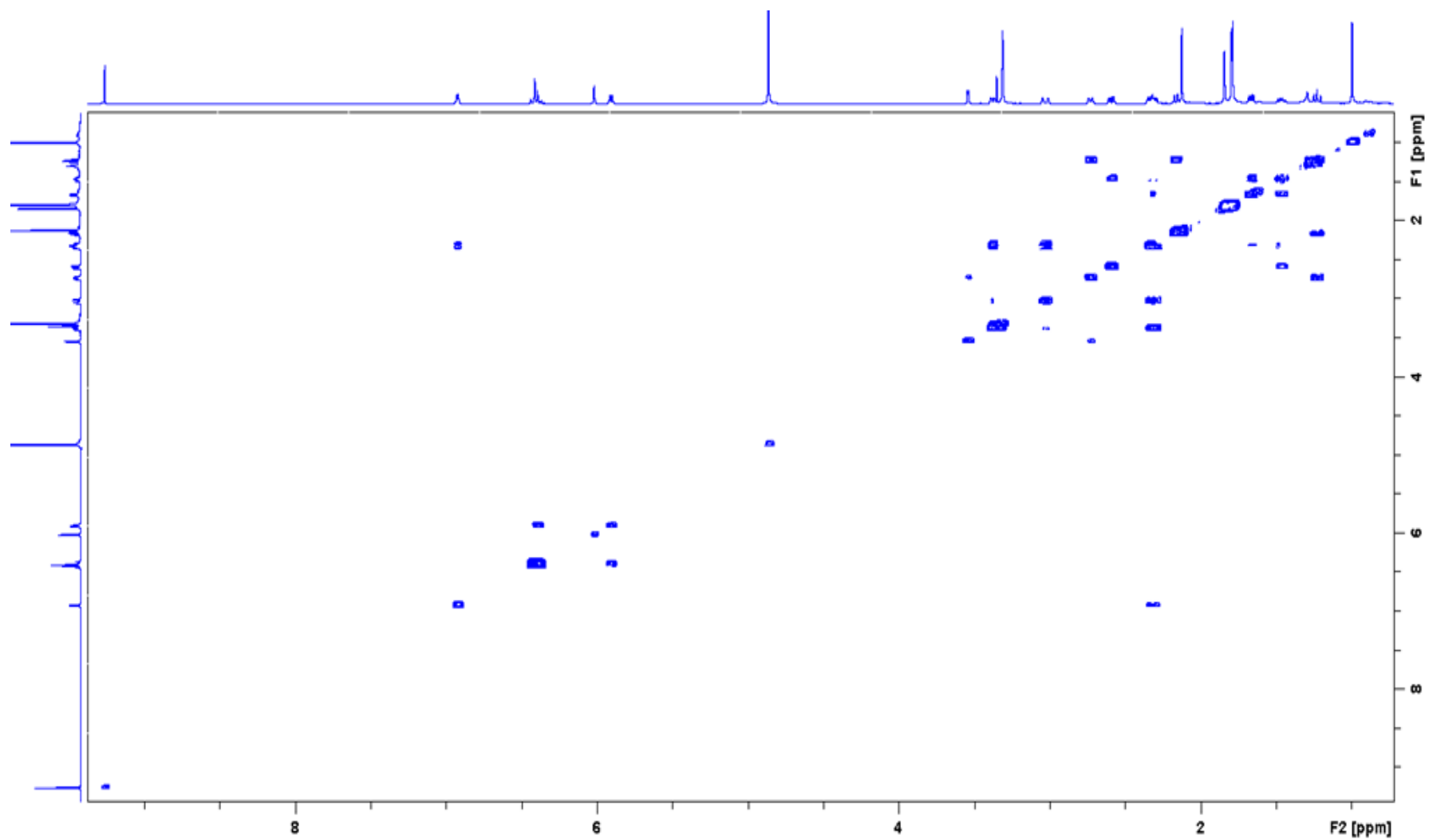


Figure S18.  $^1\text{H}$ - $^1\text{H}$  COSY spectrum of 14,15-dehydro-6-*epi*-ophiobolin G (**3**).

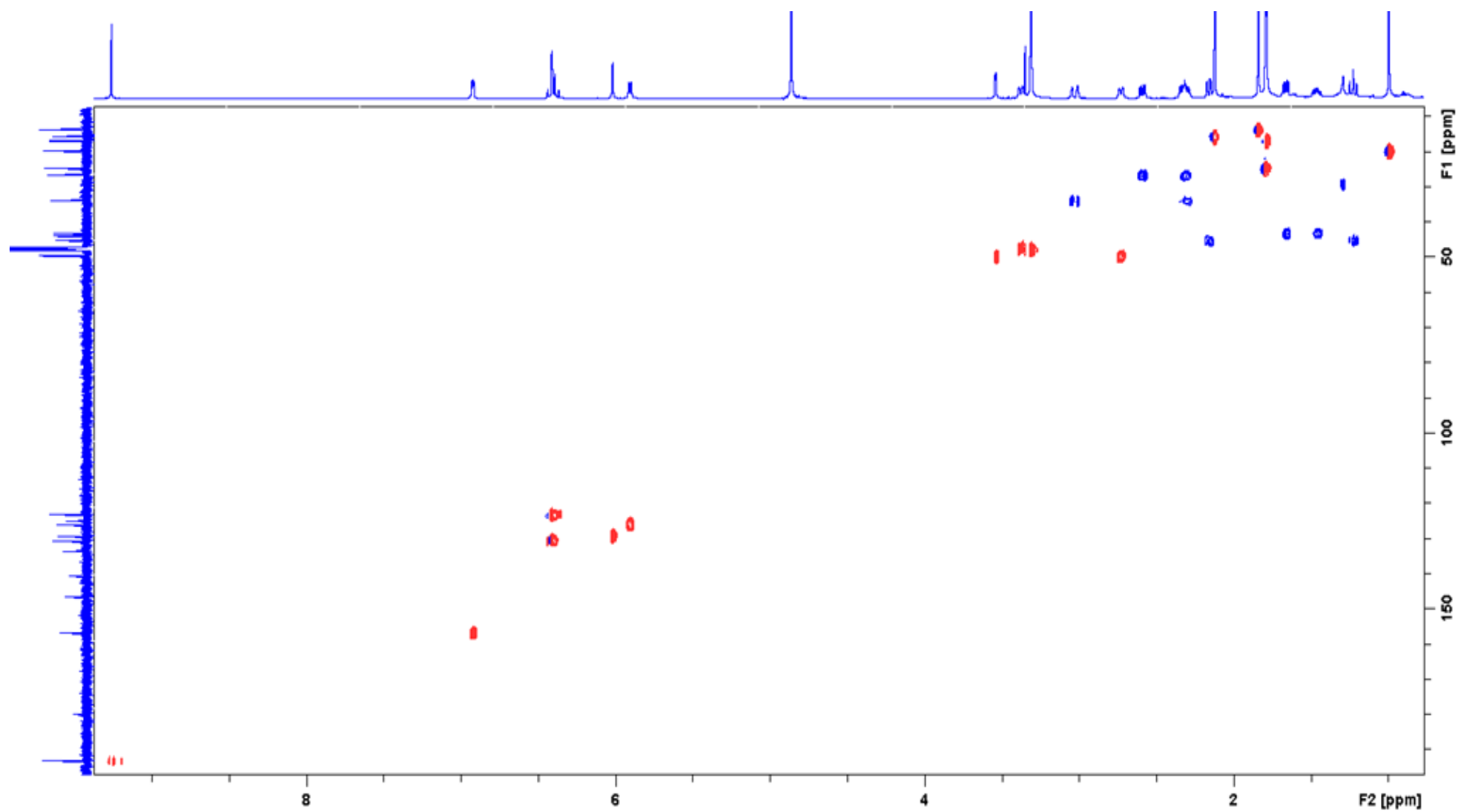


Figure S19. HSQC spectrum of 14,15-dehydro-6-*epi*-ophiobolin G (**3**).

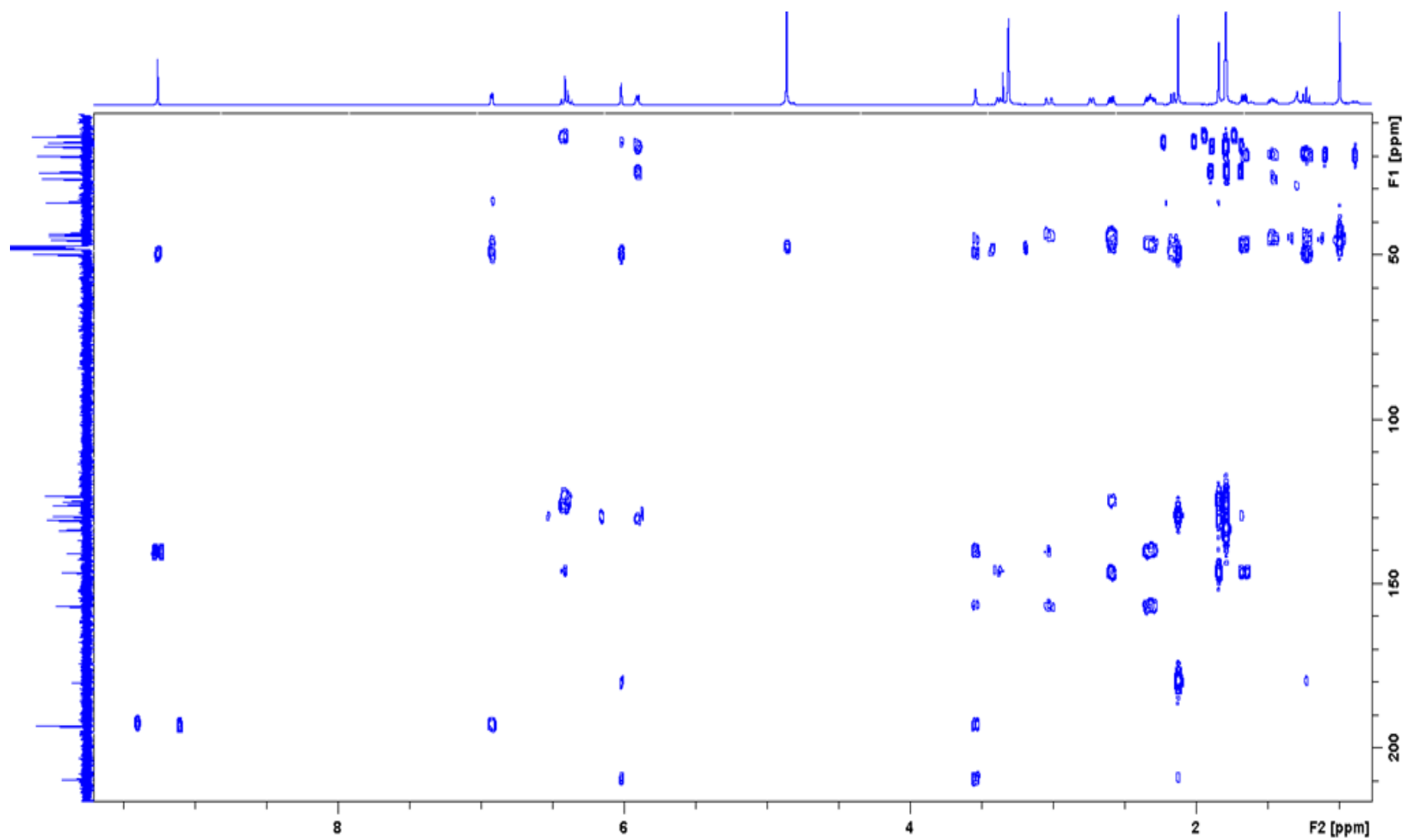


Figure S20. HMBC spectrum of 14,15-dehydro-6-*epi*-ophiobolin G (**3**).

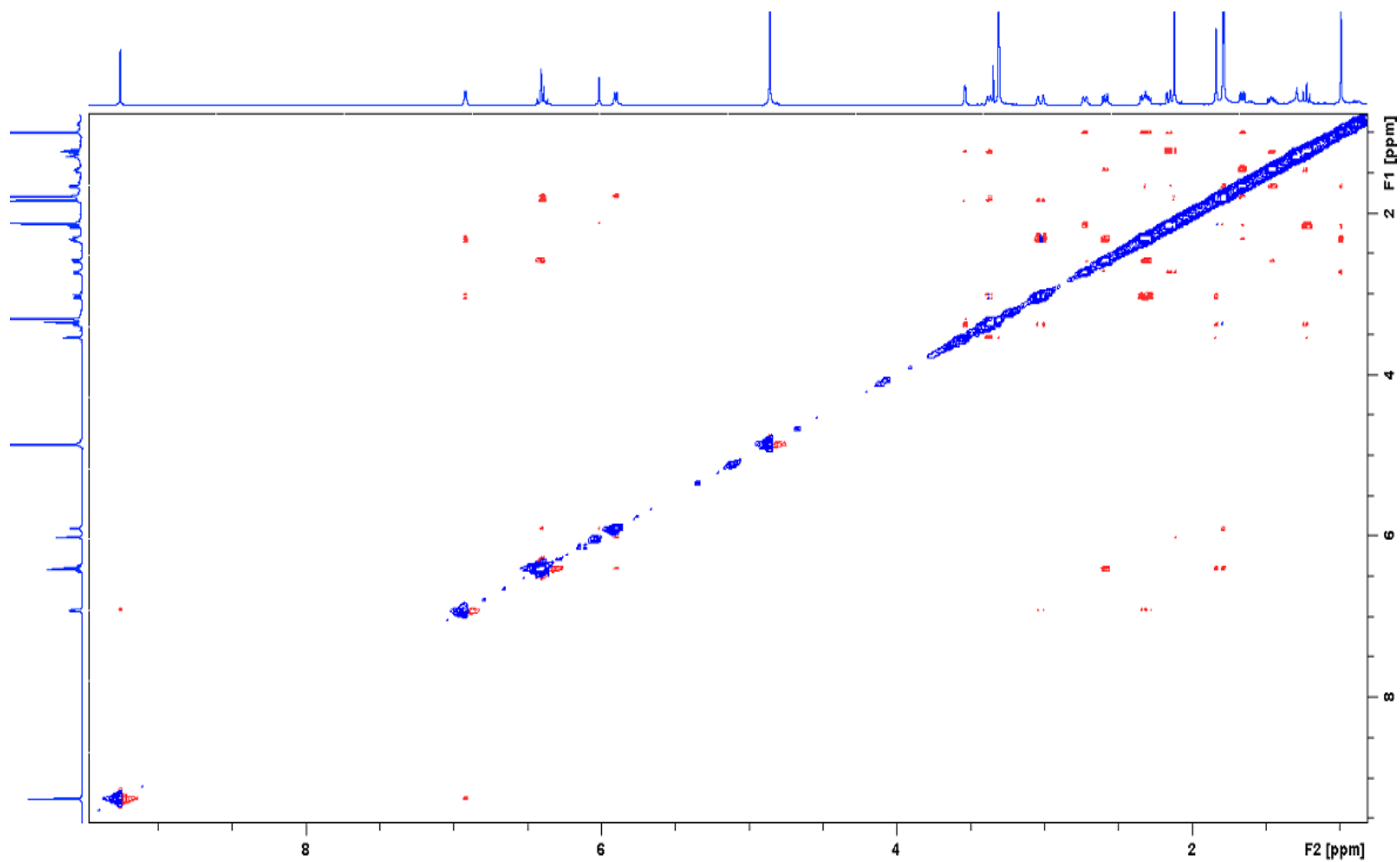


Figure S21.NOESY spectrum of 14,15-dehydro-6-*epi*-ophiobolin G (3).



### Elemental Composition Report

Single Mass Analysis  
Tolerance = 5.0 PPM / DBE: min = -1.5, max = 50.0  
Element prediction: Off  
Number of isotope peaks used for i-FIT = 3

Monoisotopic Mass, Even Electron Ions  
40 formula(e) evaluated with 1 results within limits (all results (up to 1000) for each mass)

Elements Used:

C: 1-30 H: 1-50 O: 1-5 Na: 0-1

Minimum: 500.0 5.0 -1.5

Maximum: 500.0 5.0 50.0

Mass	Calc. Mass	mDa	PPM	DBE	i-FIT	Norm	Conf(%)	Formula
387.2299	387.2300	-0.1	-0.3	9.5	1248.9	n/a	n/a	C25 H32 O2 Na

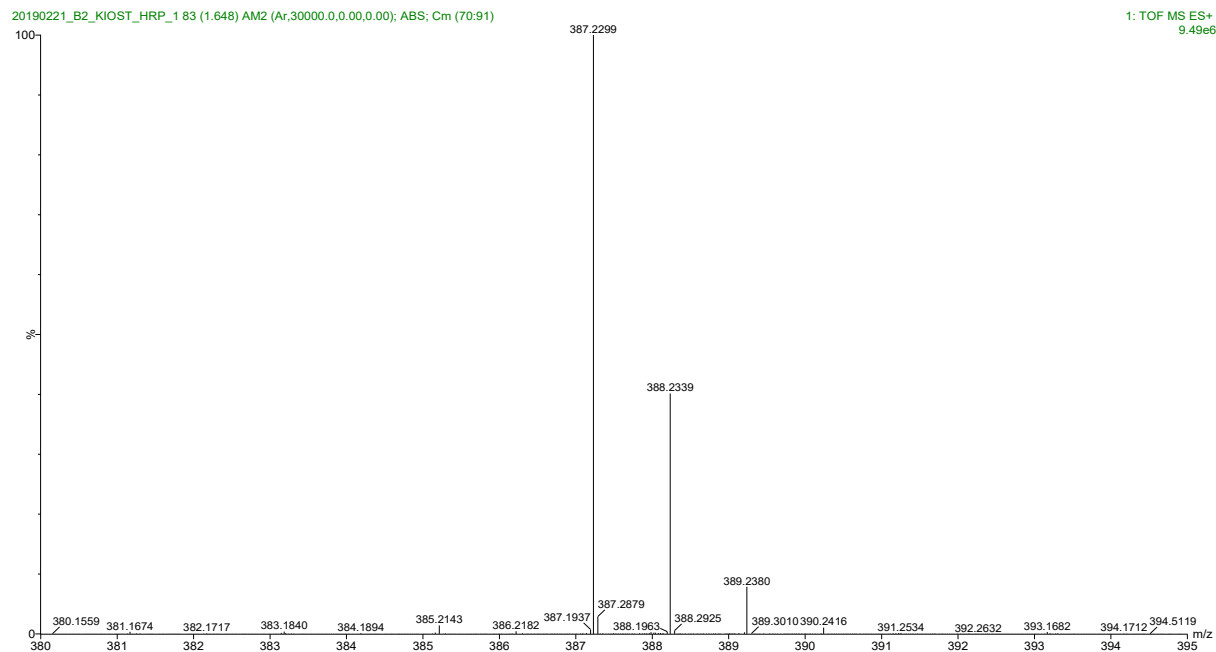


Figure S22. HRESIMS data of 14,15-dehydro-ophiobolin G (4).

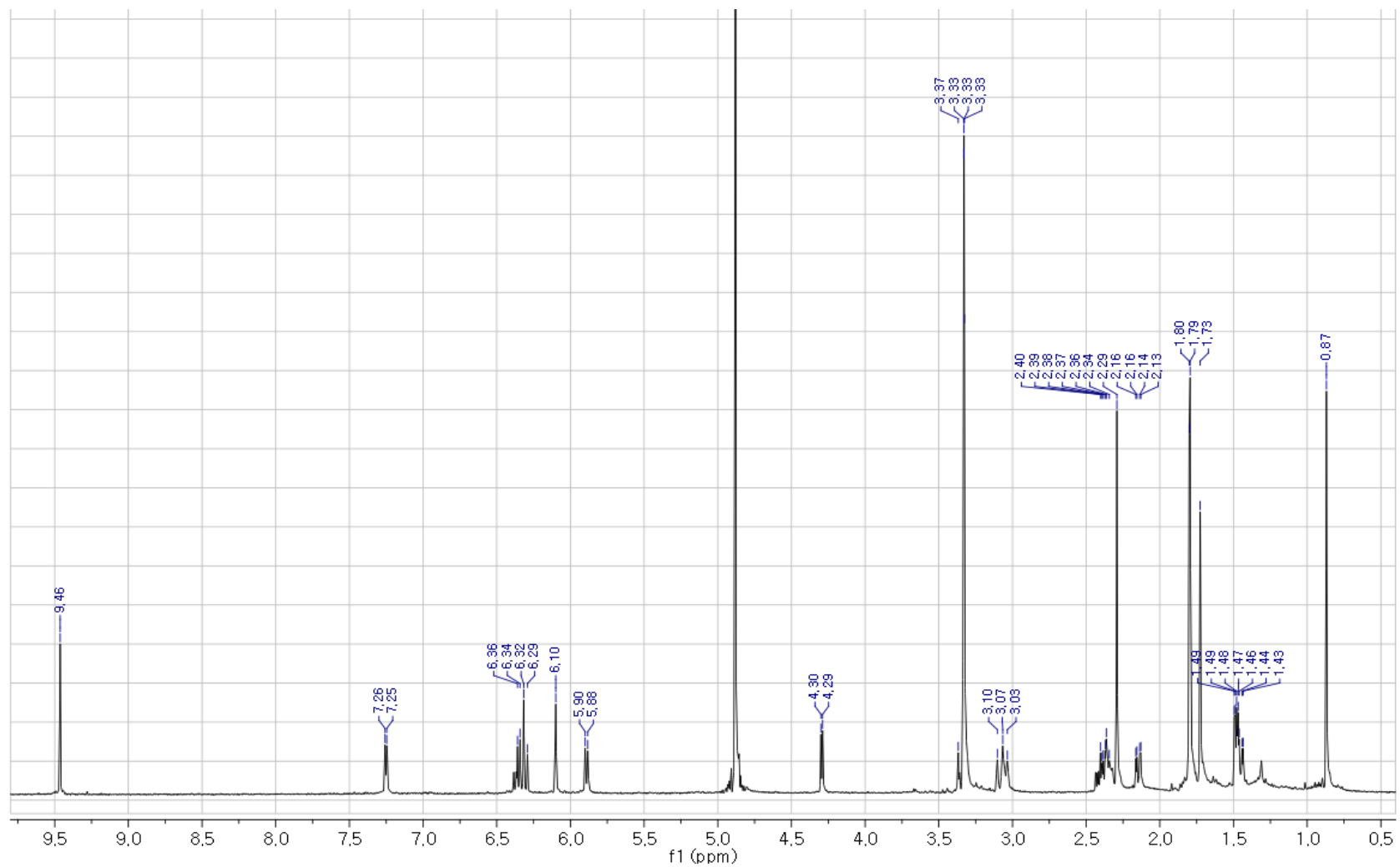


Figure S23. <sup>1</sup>H NMR spectrum of 14,15-dehydro-ophiobolin G (4).

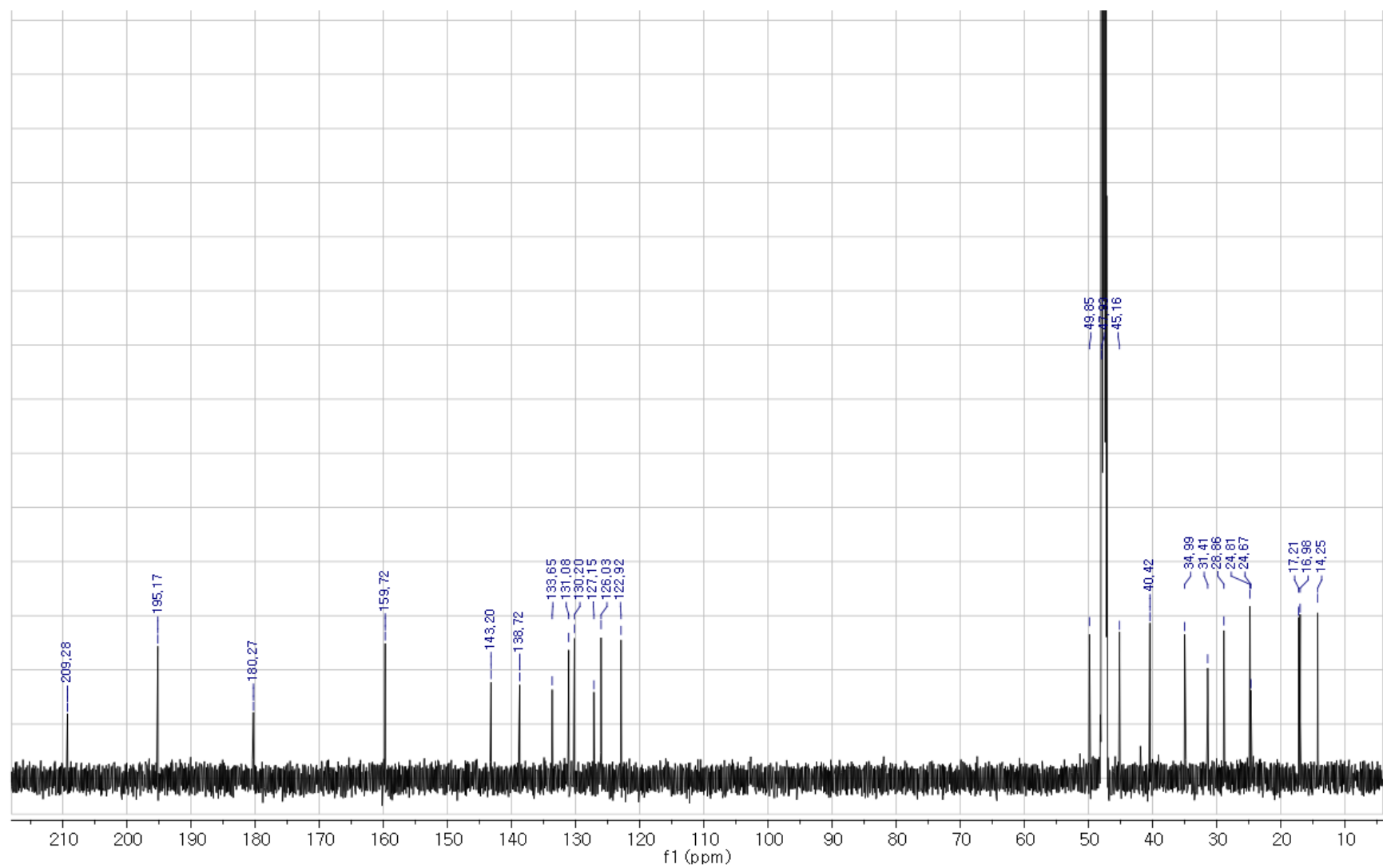


Figure S24. <sup>13</sup>C NMR spectrum of 14,15-dehydro-ophiobolin G (4).

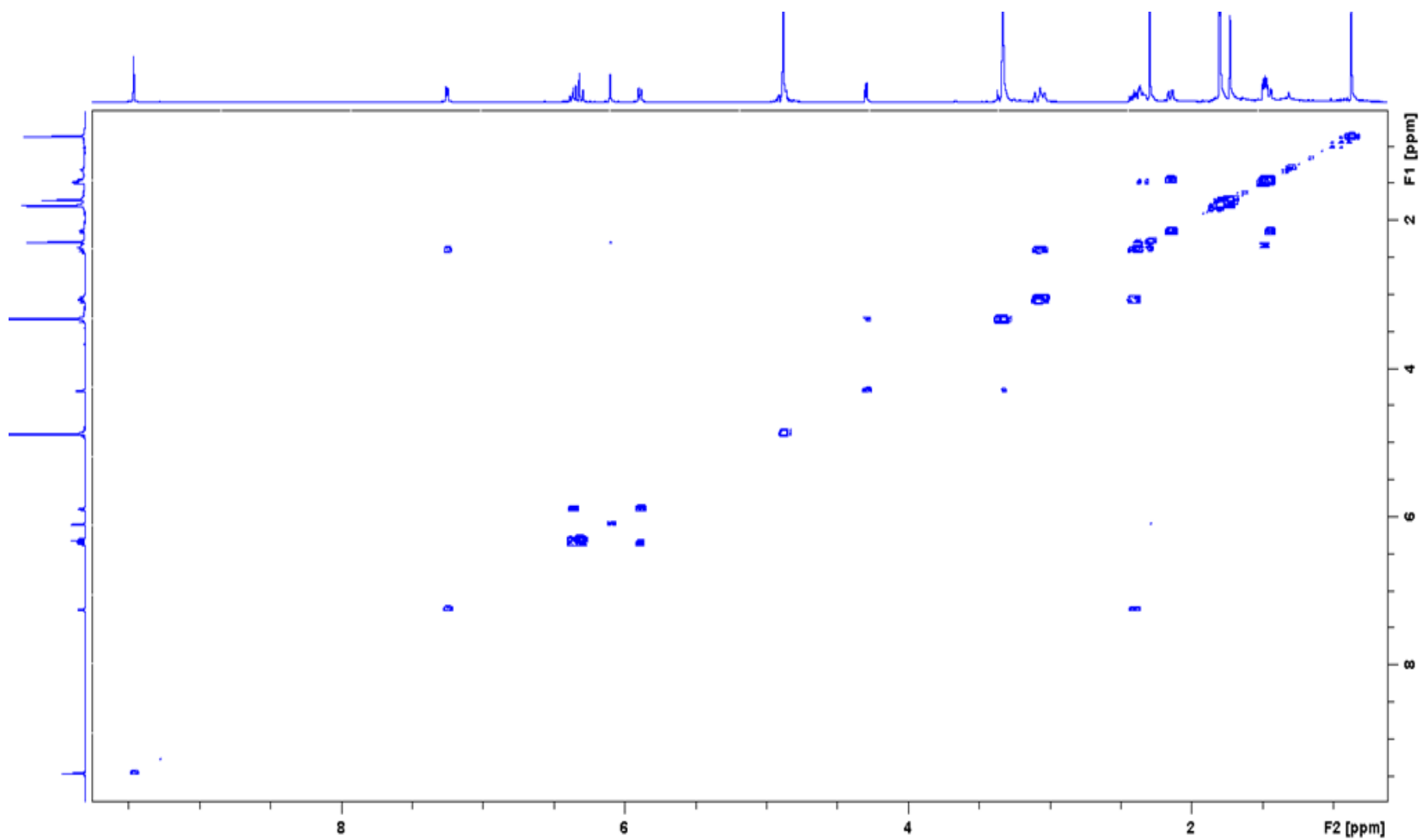


Figure S25.  $^1\text{H}$ - $^1\text{H}$  COSY spectrum of 14,15-dehydro-ophiobolin G (4).

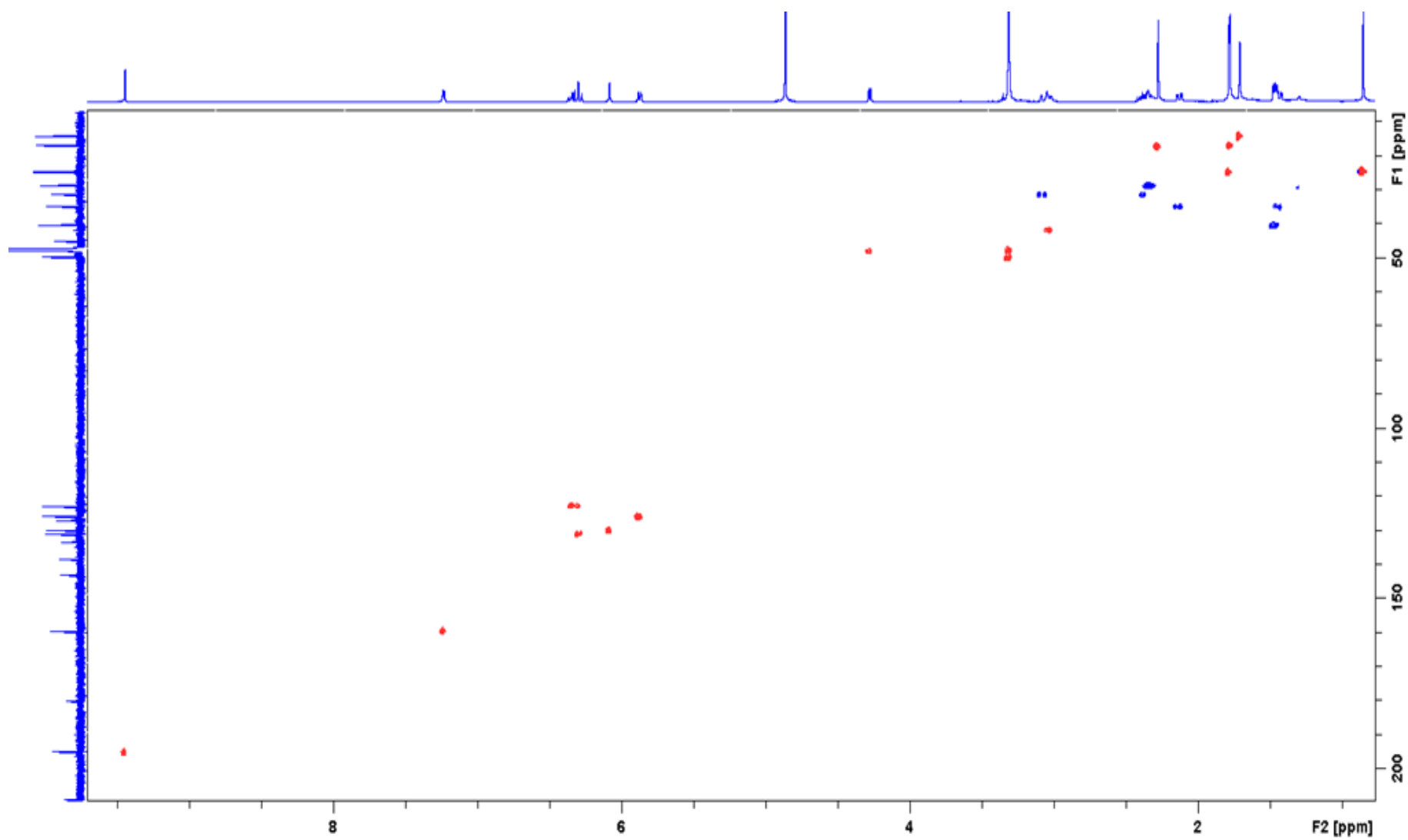


Figure S26. HSQC spectrum of 14,15-dehydro-ophiobolin G (4).

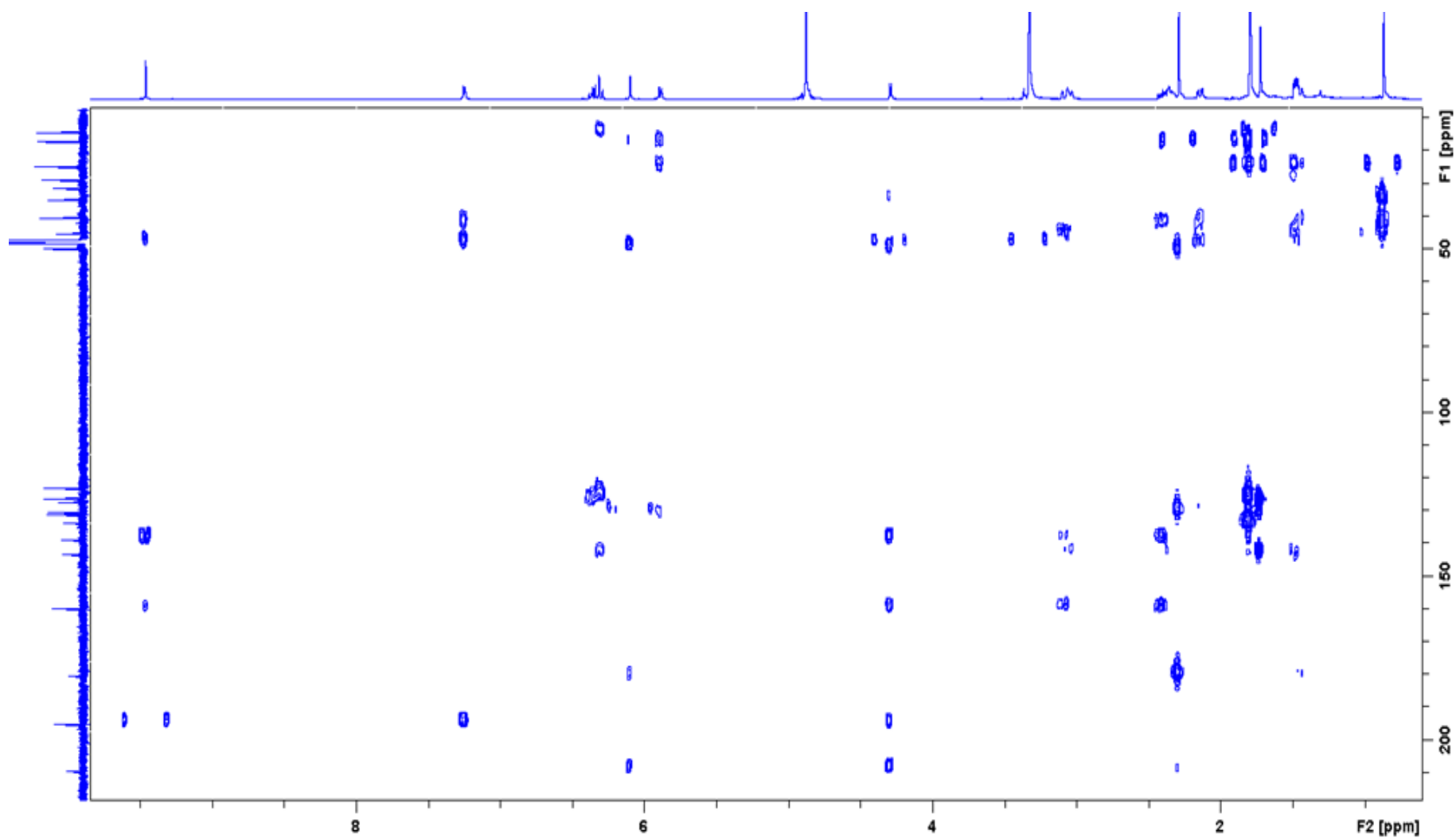


Figure S27. HMBC spectrum of 14,15-dehydro-ophiobolin G (4).

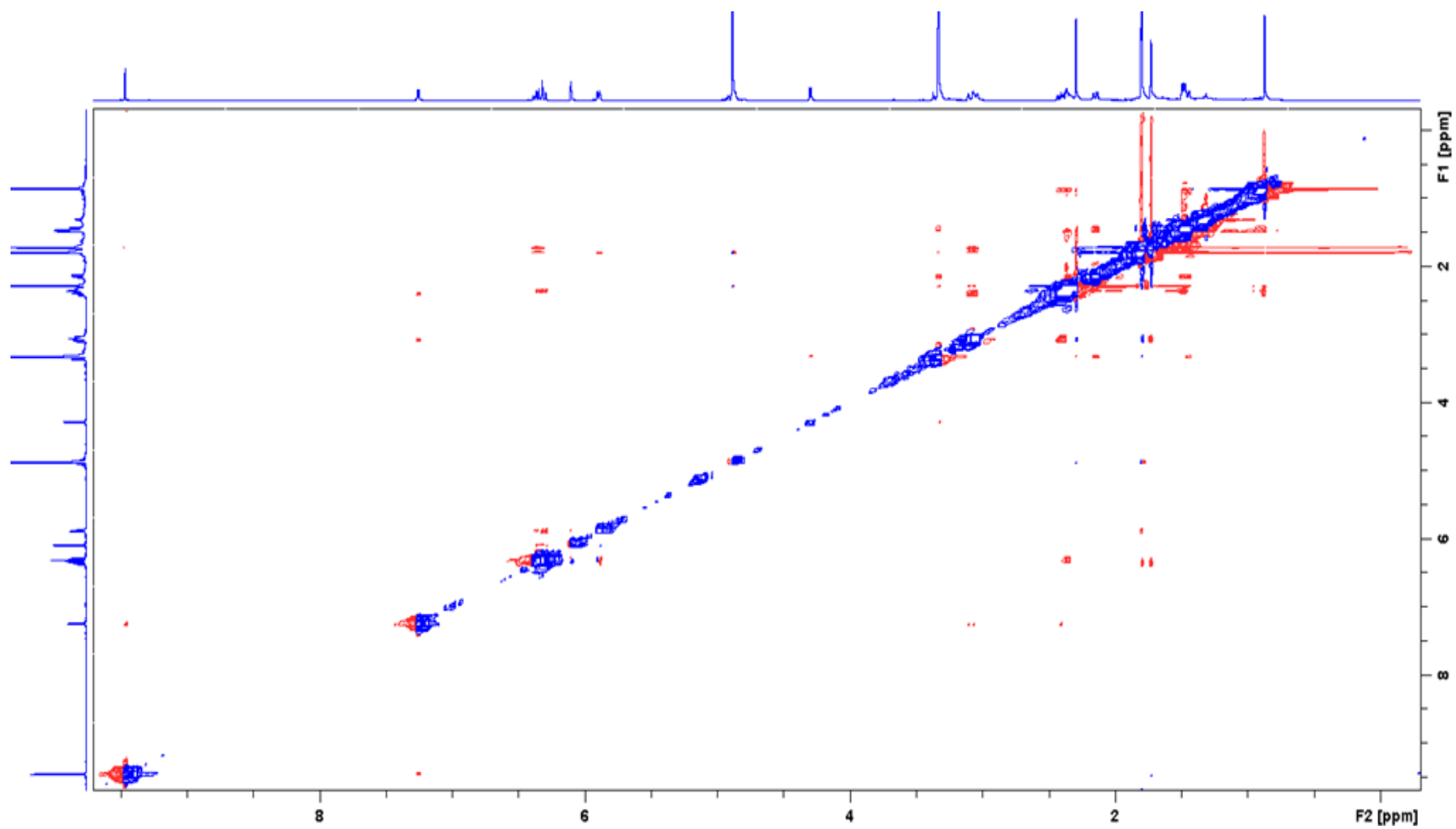


Figure S28. NOESY spectrum of 14,15-dehydro-ophiobolin G (4).

### Elemental Composition Report

Single Mass Analysis  
Tolerance = 5.0 PPM / DBE: min = -1.5, max = 50.0  
Element prediction: Off  
Number of isotope peaks used for i-FIT = 3

Monoisotopic Mass, Even Electron Ions  
82 formula(e) evaluated with 1 results within limits (all results (up to 1000) for each mass)

Elements Used:

C: 1-55 H: 1-80 O: 1-10 Na: 0-1

Minimum: -1.5

Maximum: 500.0 5.0 50.0

Mass	Calc. Mass	mDa	PPM	DBE	i-FIT	Norm	Conf(%)	Formula
387.2299	387.2300	-0.1	-0.3	9.5	1135.1	n/a	n/a	C25 H32 O2 Na

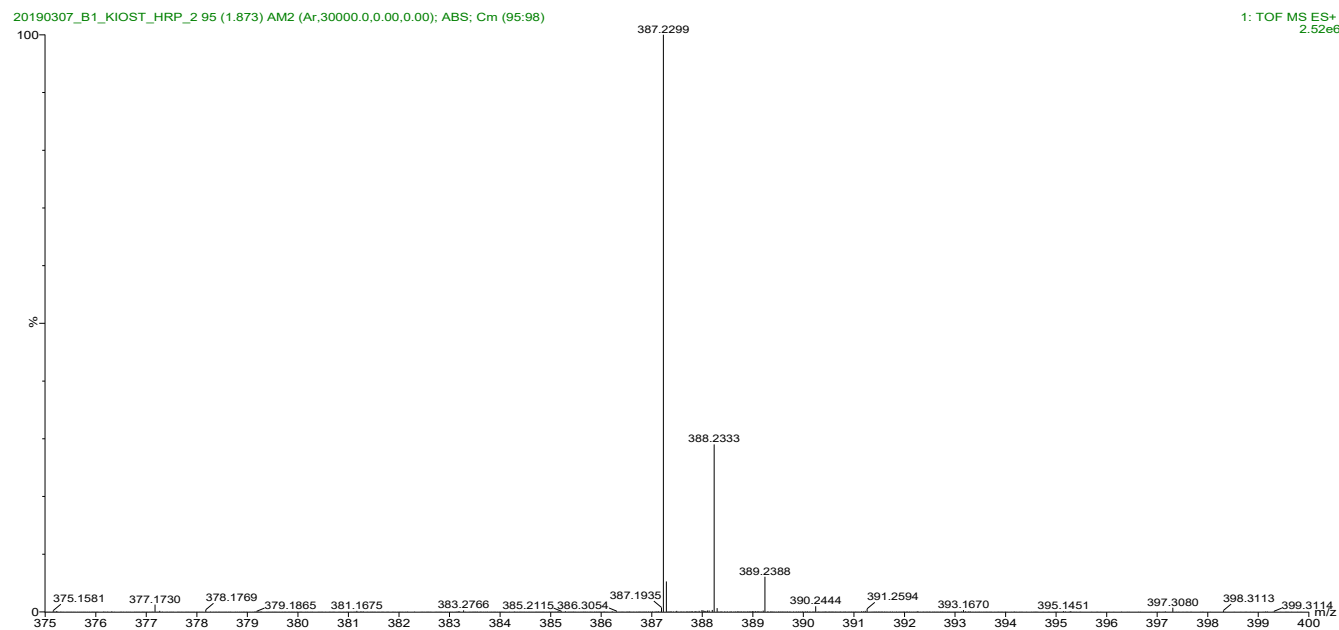


Figure S29. HRESIMS data of 14,15-dehydro-(Z)-14-ophiobolin G (5).



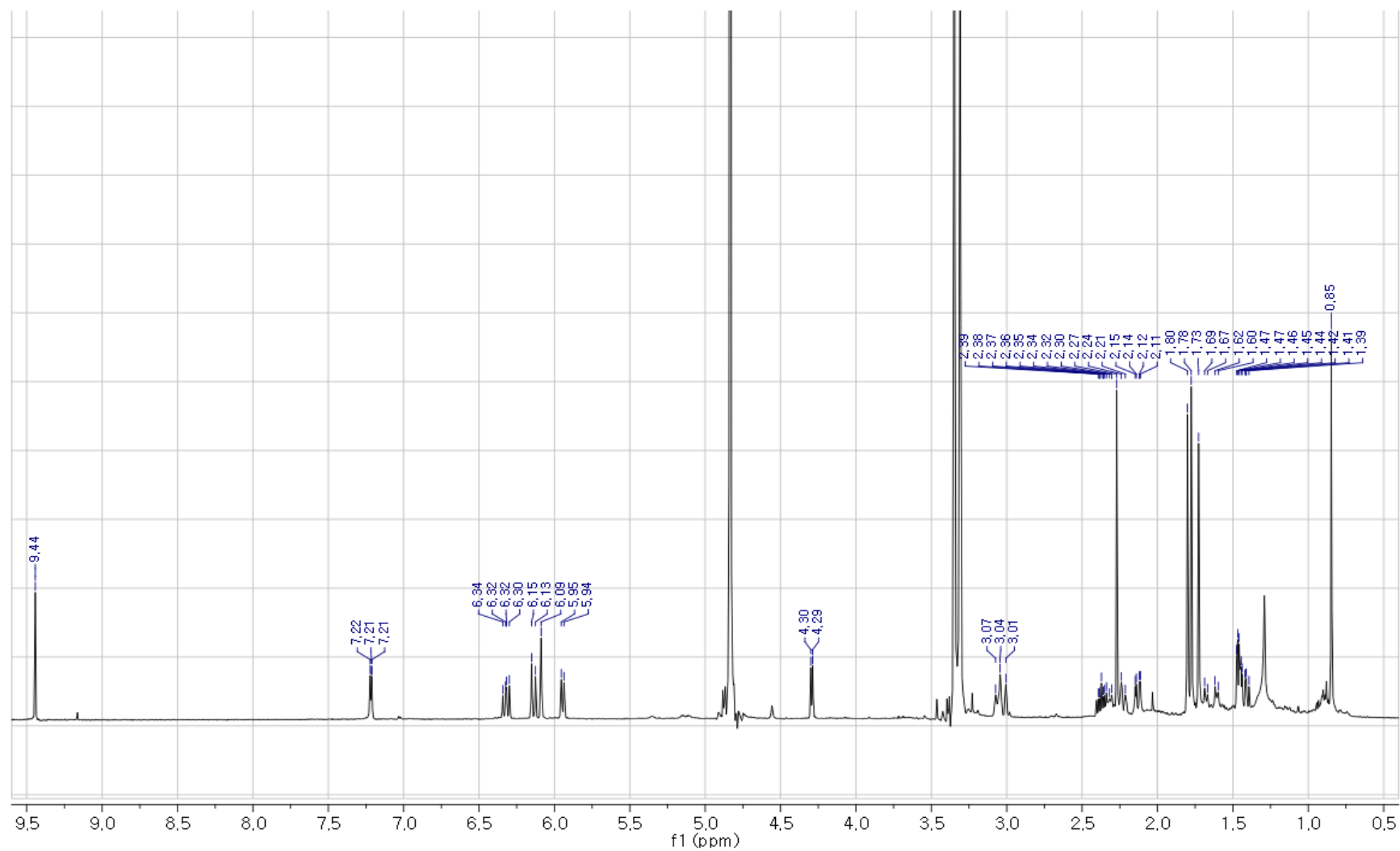


Figure S30. <sup>1</sup>H NMR spectrum of 14,15-dehydro-(Z)-14-ophiobolin G (5).

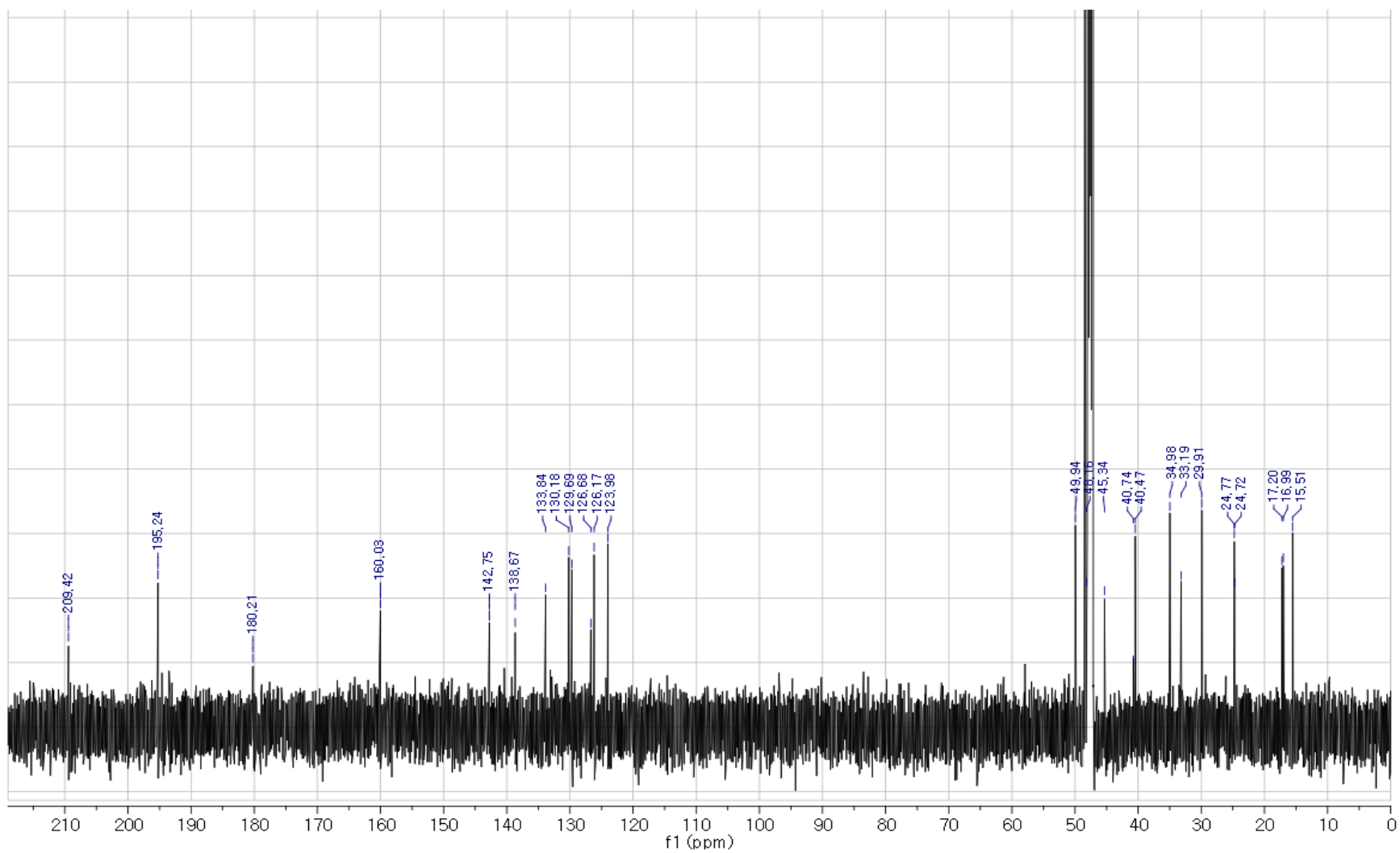


Figure S31. <sup>13</sup>C NMR spectrum of 14,15-dehydro-(Z)-14-ophiobolin G (5).



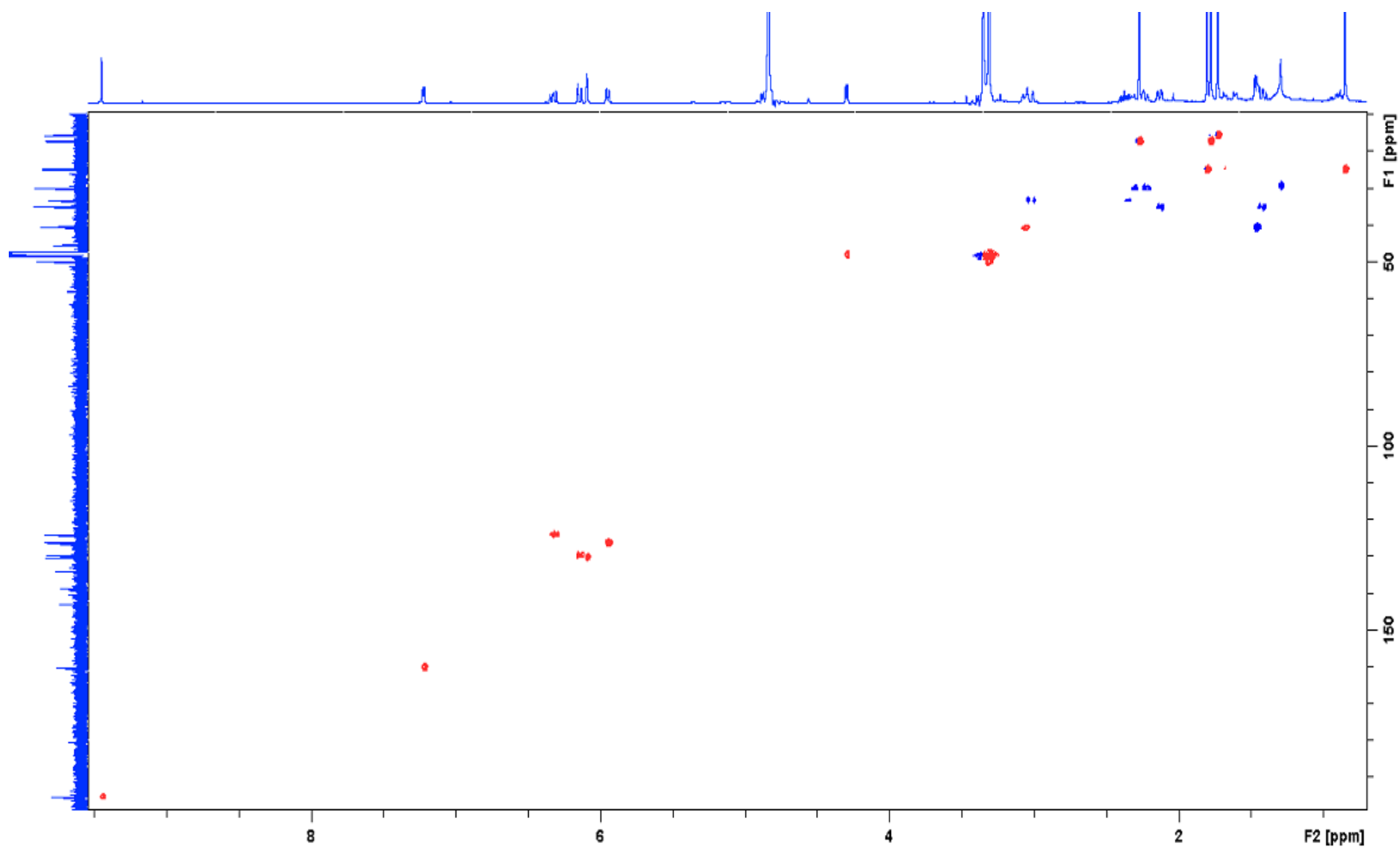


Figure S33. HSQC spectrum of 14,15-dehydro-(*Z*)-14-ophiobolin G (**5**).

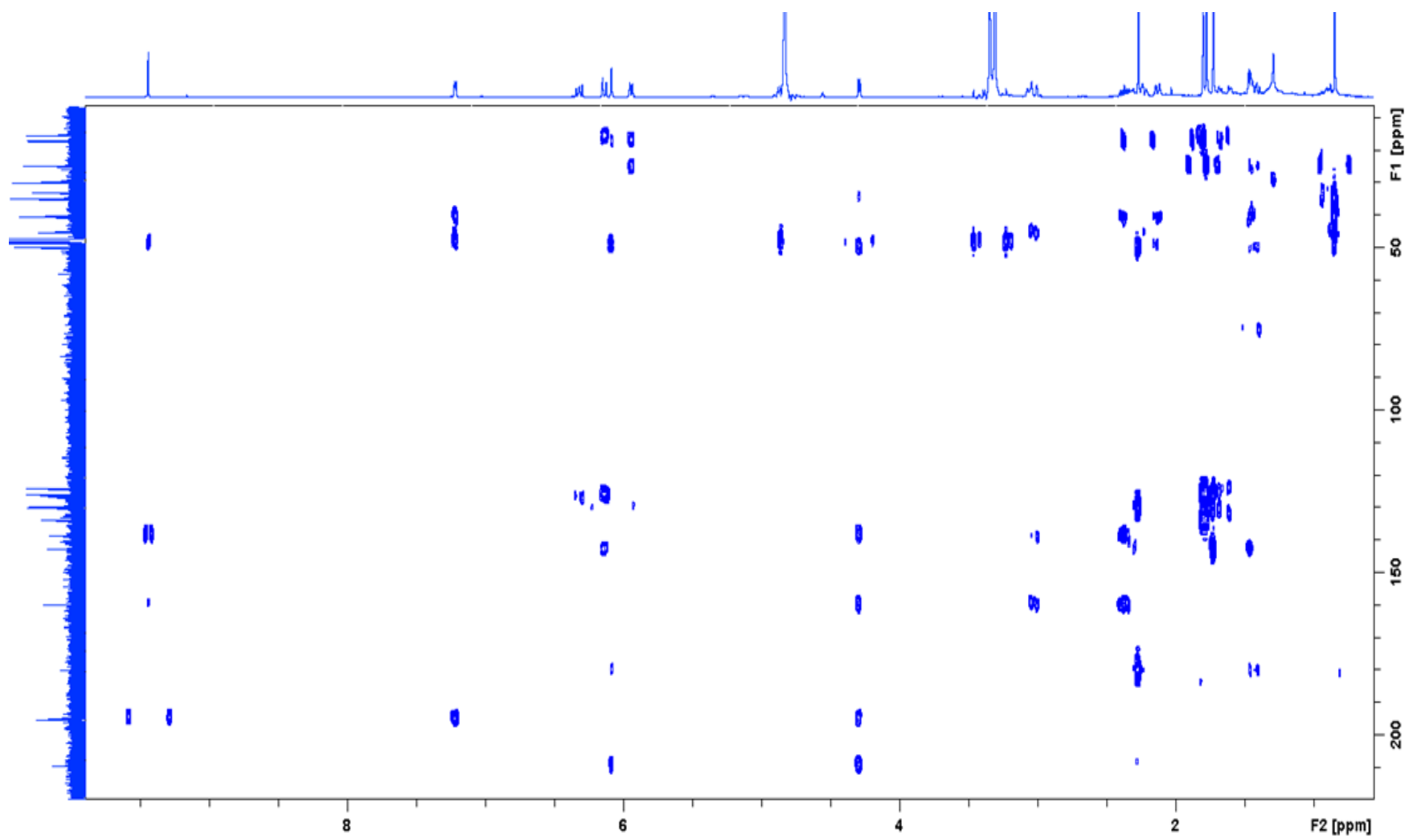


Figure S34. HMBC spectrum of 14,15-dehydro-(Z)-14-ophiobolin G (**5**).

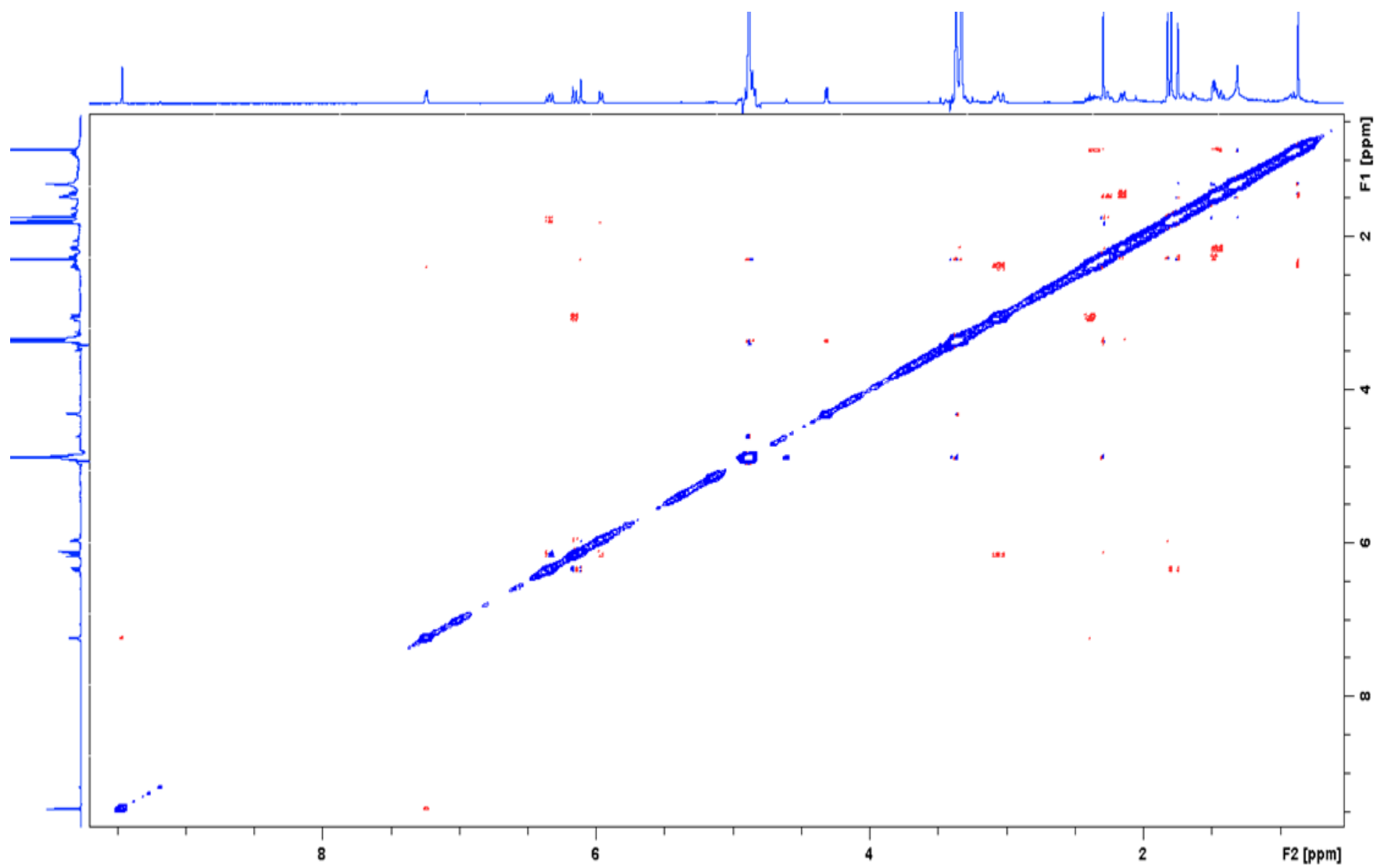


Figure S35. NOESY spectrum of 14,15-dehydro-(Z)-14-ophiobolin G (5).



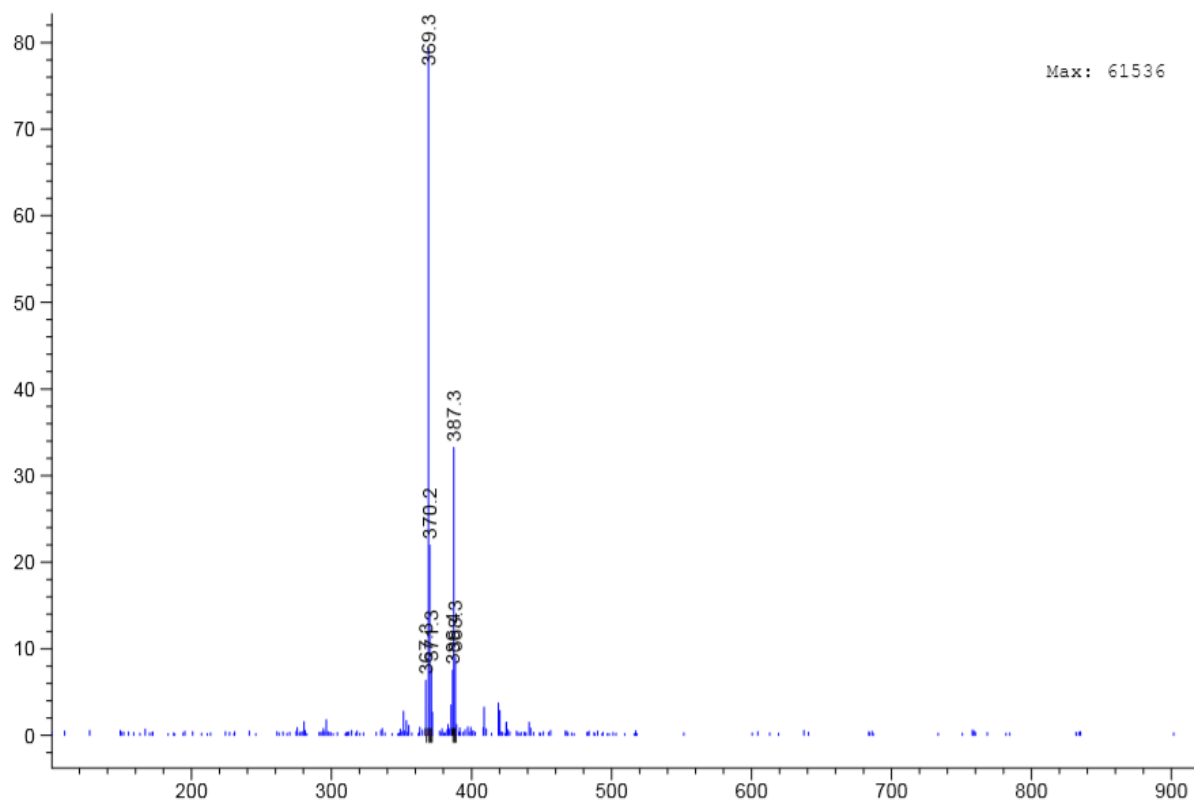


Figure S38. LRMS data of Ophiobolin C (7).

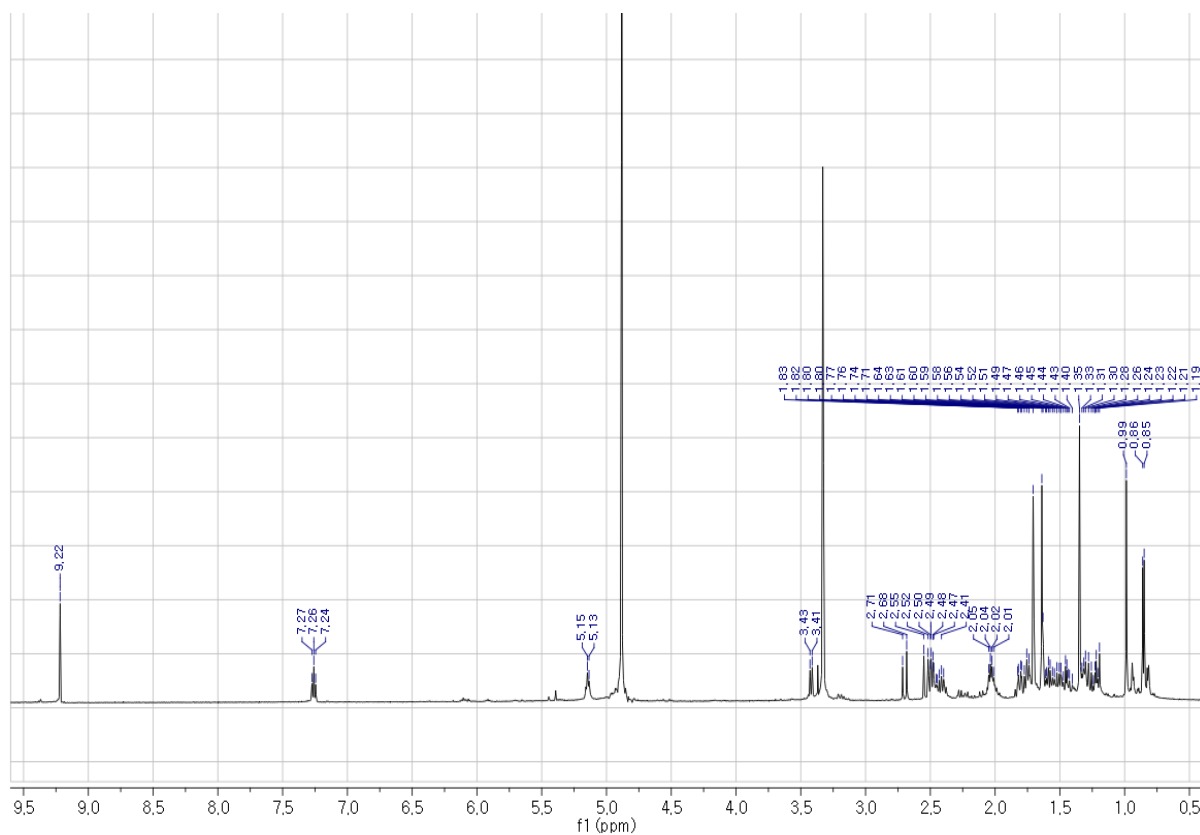


Figure S39.  $^1\text{H}$  NMR spectrum of Ophiobolin C (7).



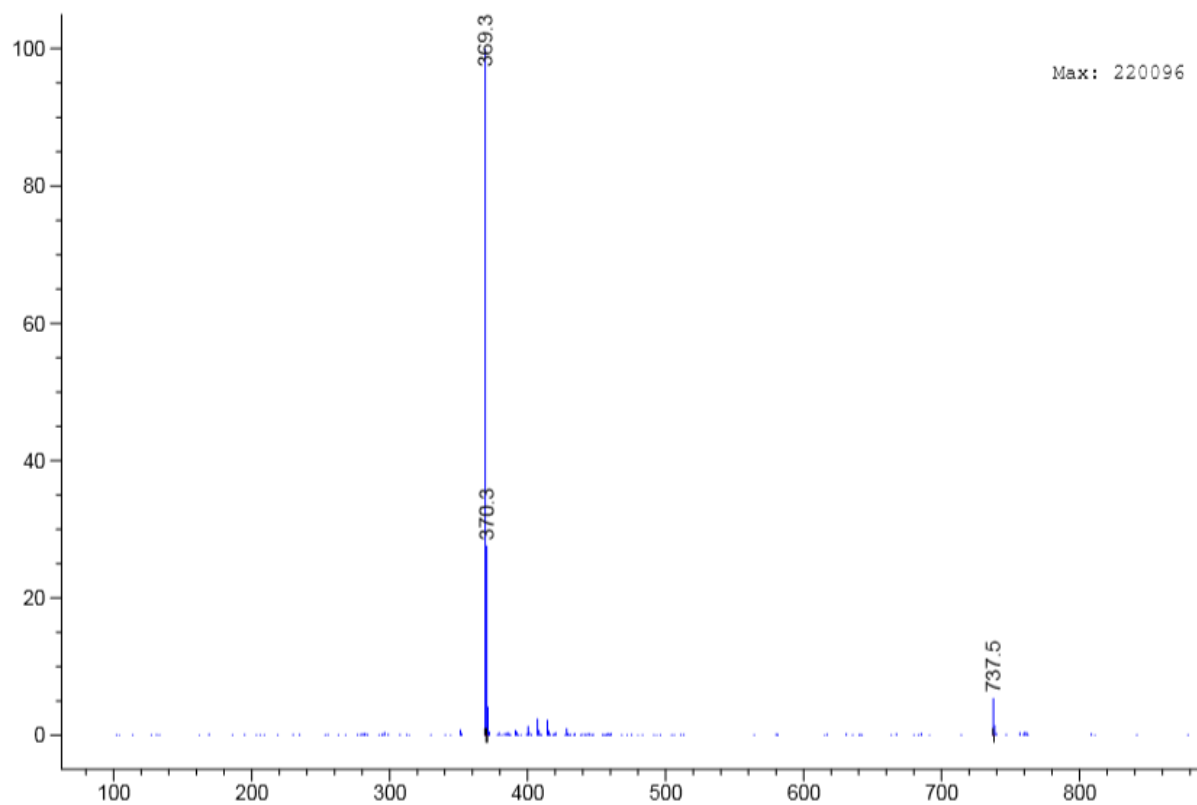


Figure S40. LRMS data of 6-epi-ophiobolin N (8).

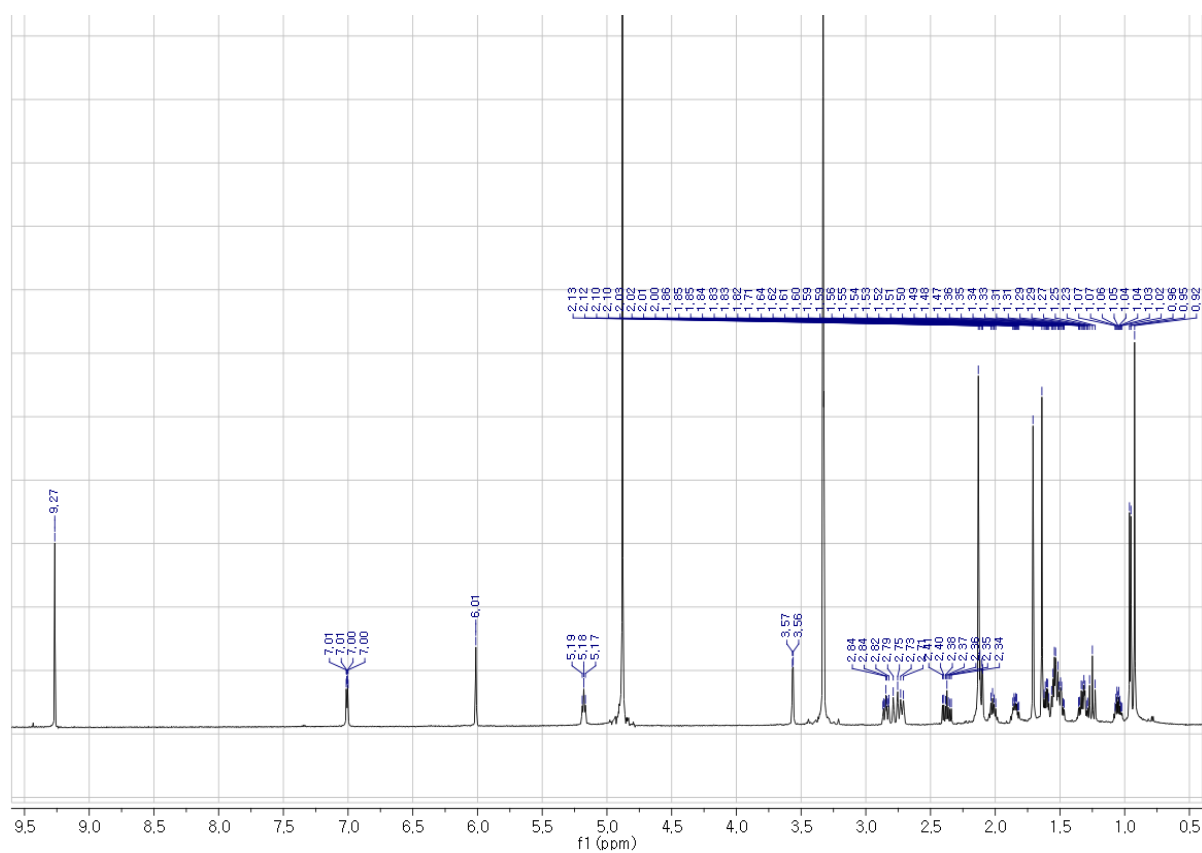


Figure S41. <sup>1</sup>H NMR spectrum of 6-epi-ophiobolin N (8).

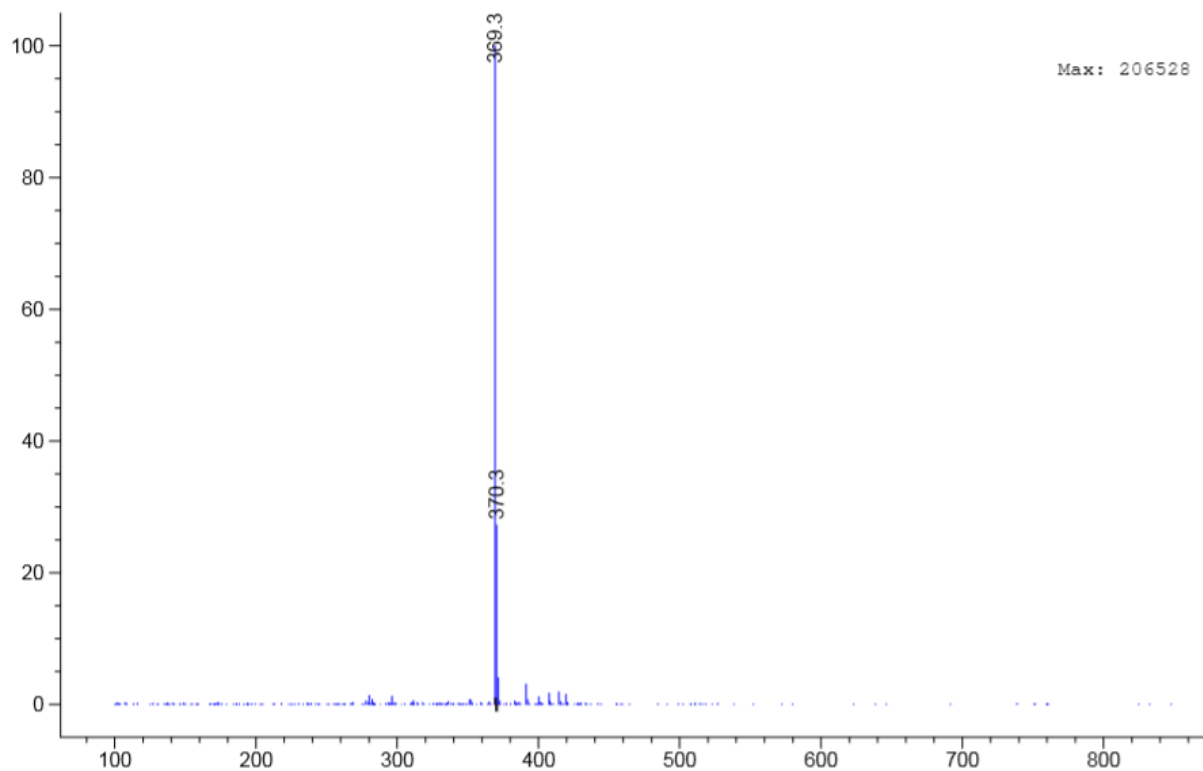


Figure S42. LRMS data of Ophiobolin N (9).

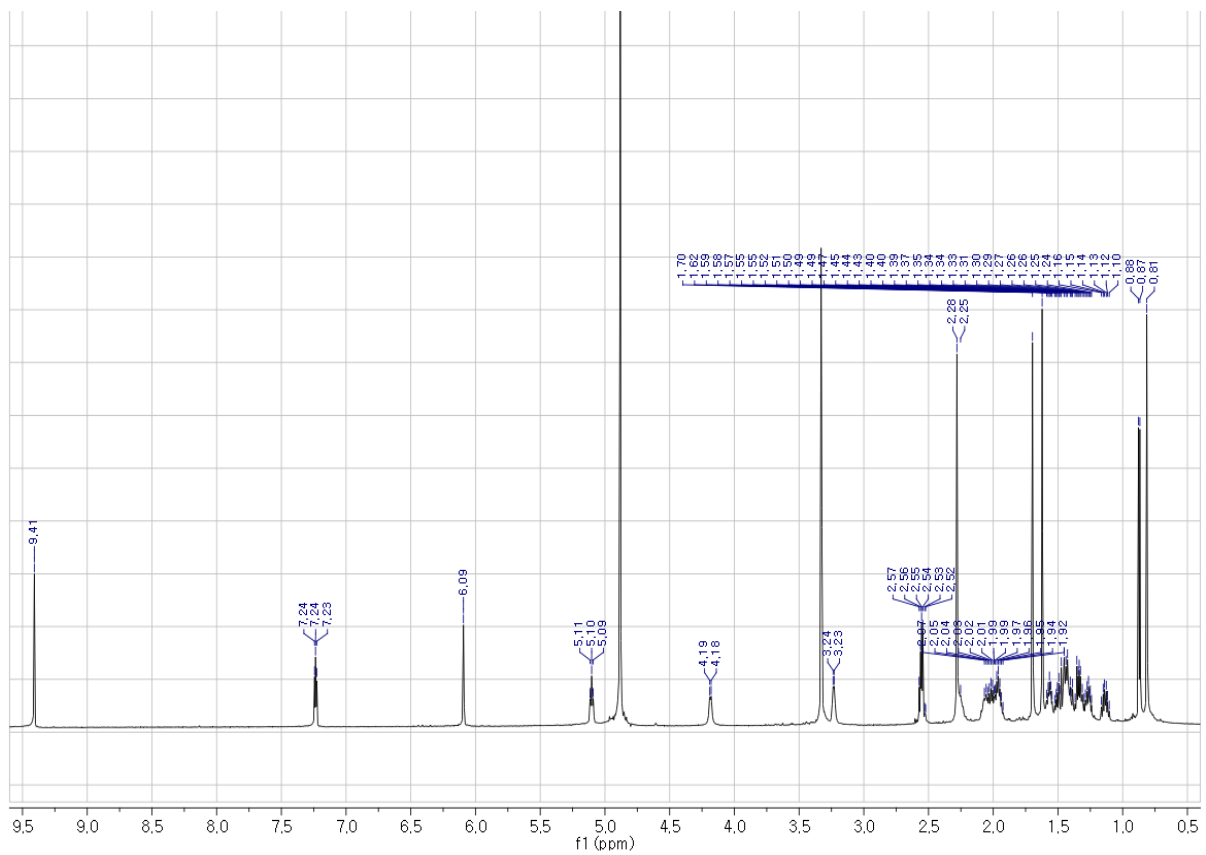


Figure S43.  $^1\text{H}$  NMR spectrum of Ophiobolin N (9).