

Supplementary Materials

Steroids from Marine-Derived Fungi: Evaluation of Antiproliferative and Antimicrobial Activities of Eburicol

Ana Camila dos Santos Dias, Aurélie Couzinet-Mossion, Nicolas Ruiz, Fatima Lakhdar, Samira Etahiri, Samuel Bertrand, Lucie Ory, Christos Roussakis, Yves-François Pouchus, Hassan Nazih, Gaetane Wielgosz-Collin

Table of Contents

Figure S1. ^1H NMR spectrum of Eburicol in CDCl_3 (400 MHz, 25°C)

Figure S2. COSY spectrum of Eburicol in CDCl_3 (400 MHz, 25°C)

Figure S3. Expanded HSQC spectrum of eburicol in CDCl_3 (400 MHz for ^1H , 25°C)

Figure S4. Expanded HSQC spectrum of eburicol in CDCl_3 (400 MHz for ^1H , 25°C)

Figure S5. Expanded HMBC spectrum of eburicol in CDCl_3 (400 MHz for ^1H , 25°C)

Figure S6. Expanded HMBC spectrum of eburicol in CDCl_3 (400 MHz for ^1H , 25°C)

Table S1. Evaluation of antimicrobial activity of eburicol against human pathogenic bacteria (n = 3). Values should be compared to the standard **Streptomycin** results (**12 ± 2 at 50 $\mu\text{g/mL}$** and **15 ± 2 at 100 $\mu\text{g/mL}$** for all strains).

Figure S1. ^1H NMR spectrum of Eburicol in CDCl_3 (400 MHz, 25°C)

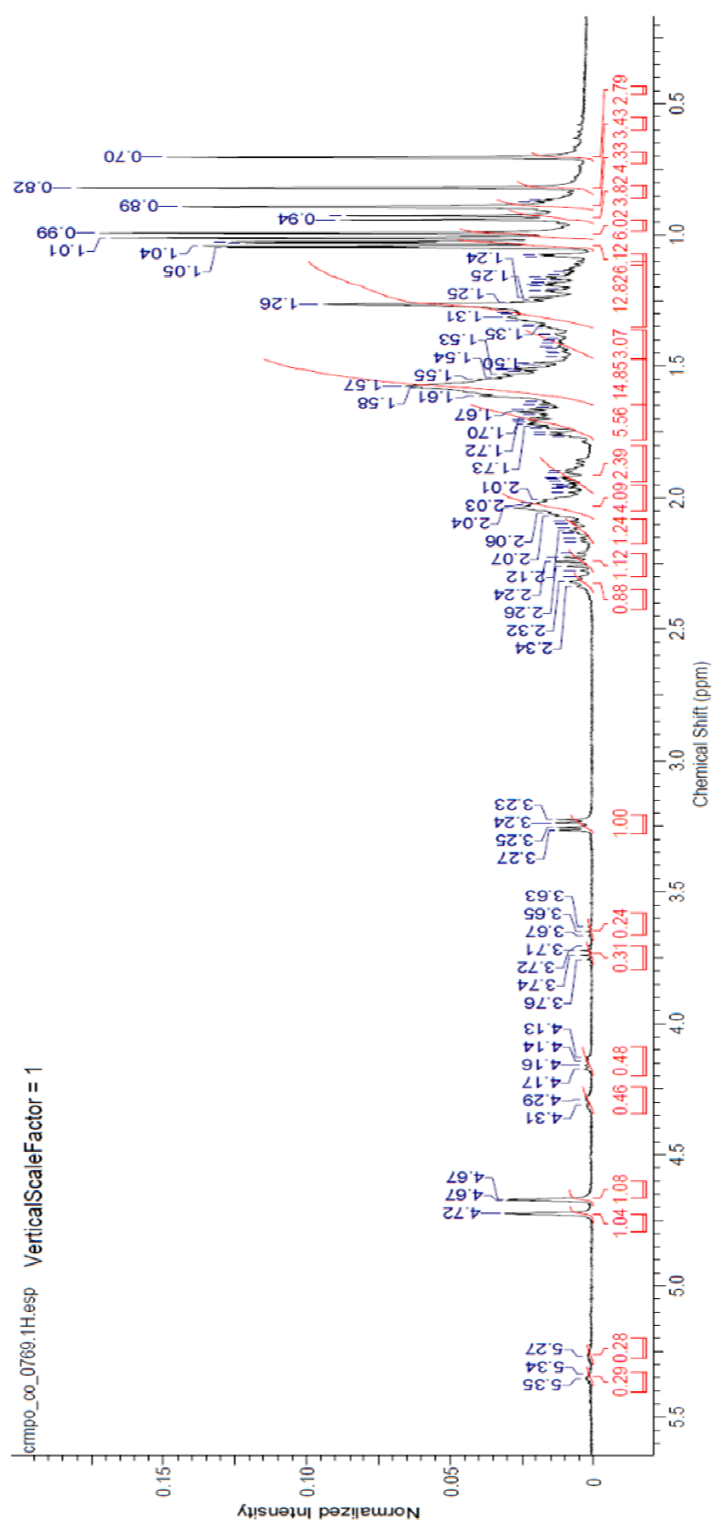


Figure S2. COSY spectrum of Eburicol in CDCl₃ (400 MHz, 25°C)

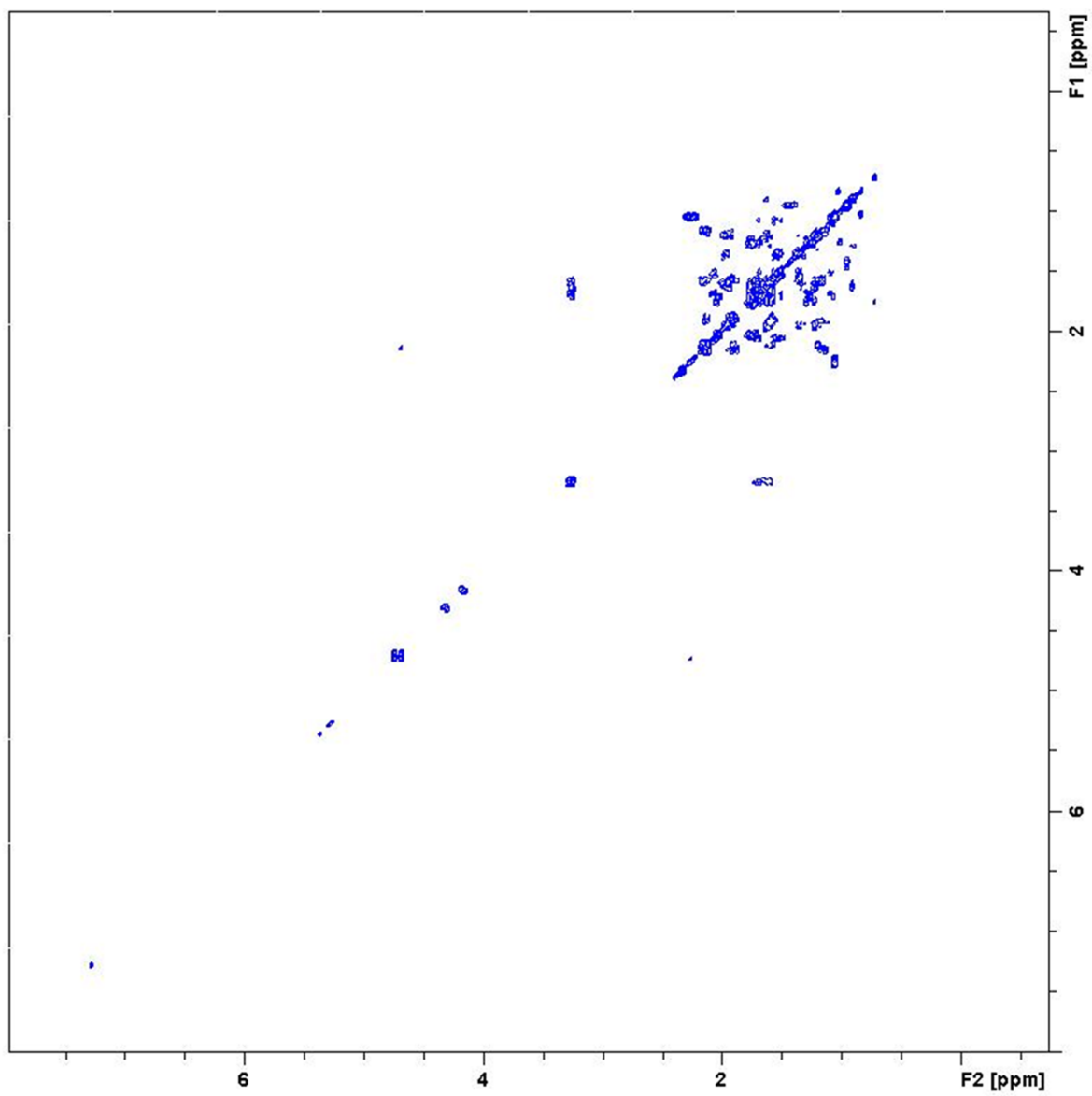


Figure S3. Expanded HSQC spectrum of eburicol in CDCl₃ (400 MHz for ¹H, 25°C)

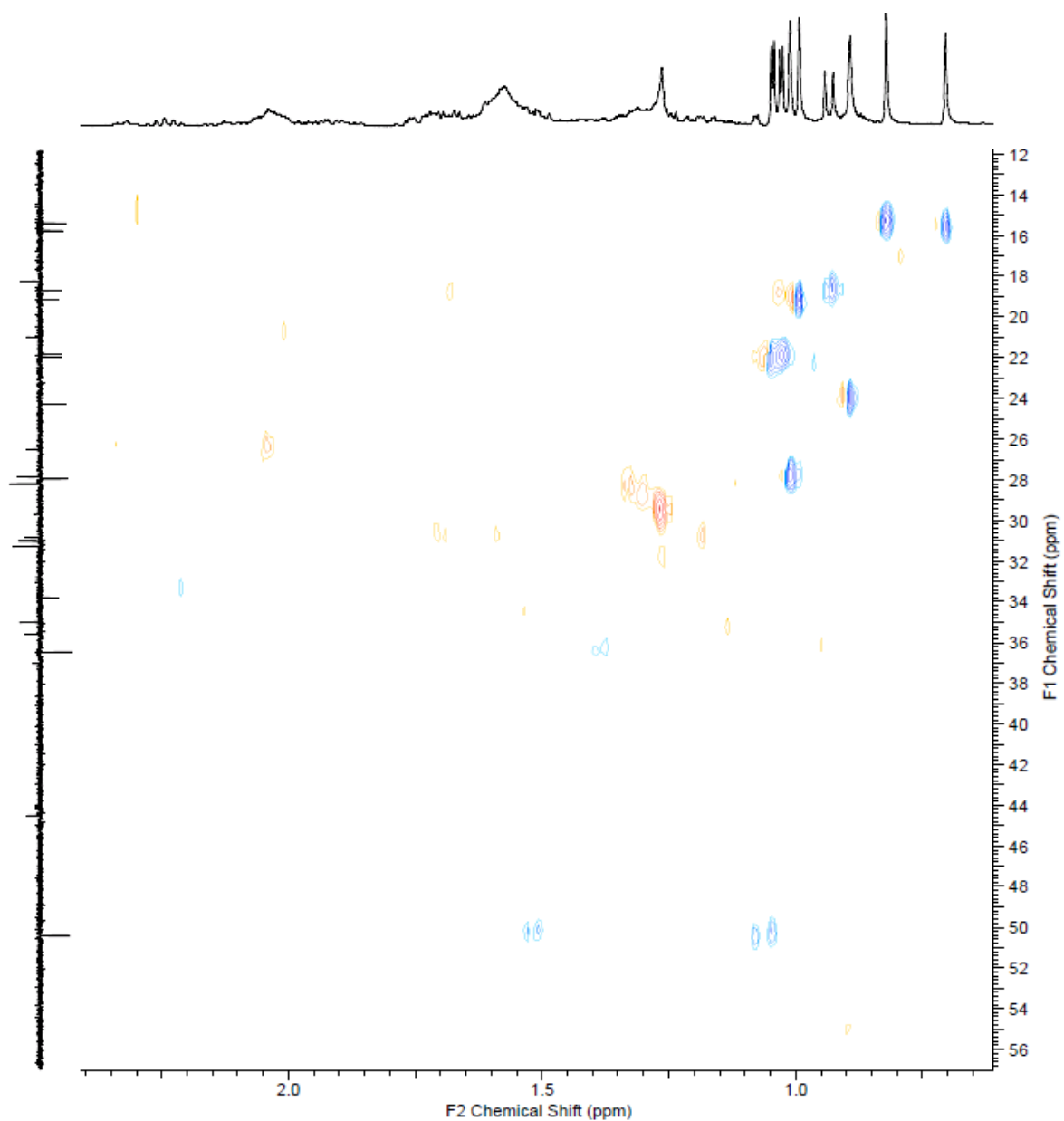


Figure S4. Expanded HSQC spectrum of eburicol in CDCl₃ (400 MHz for ¹H, 25°C)

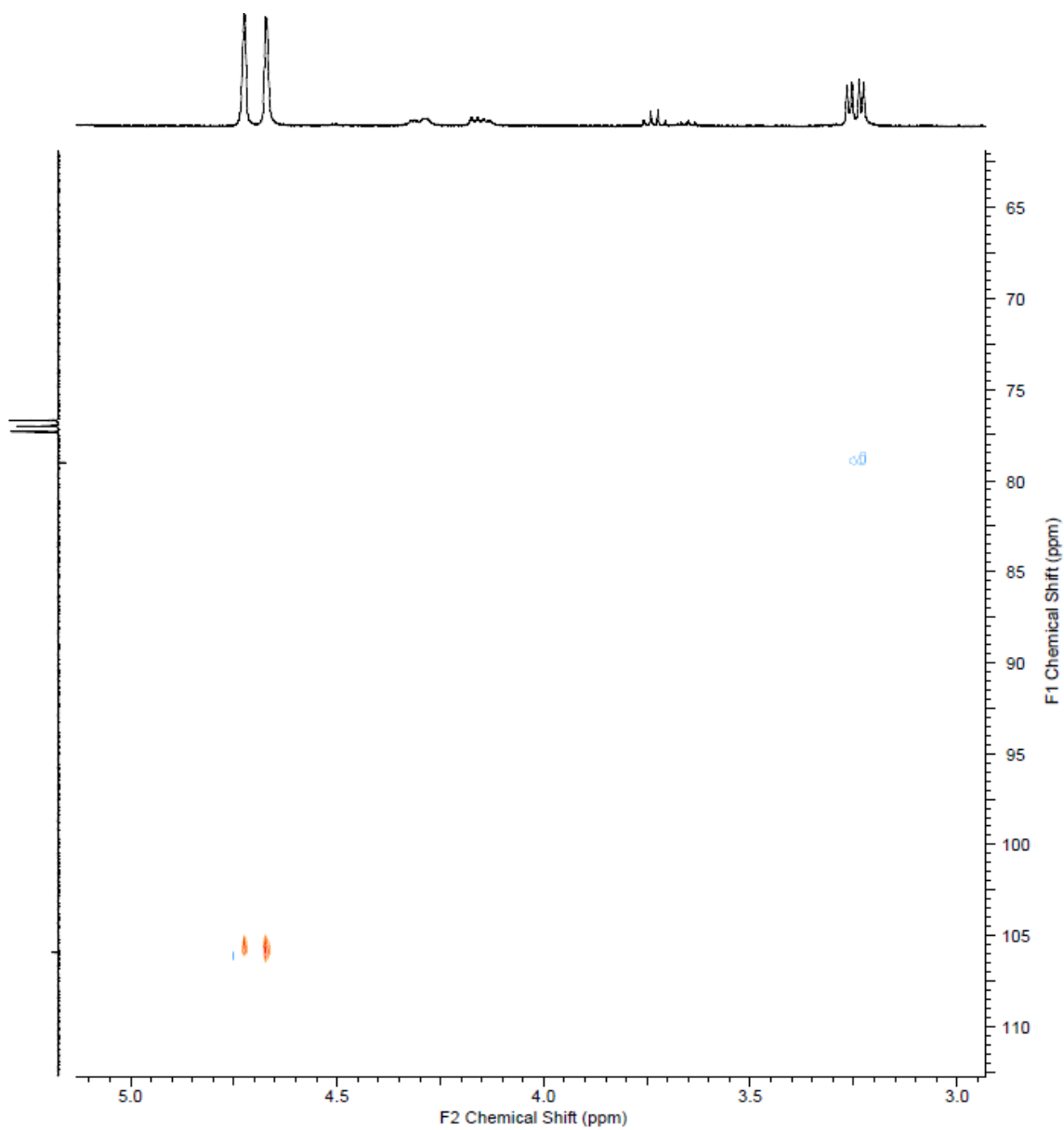


Figure S5. Expanded HMBC spectrum of eburicol in CDCl₃ (400 MHz for ¹H, 25°C)

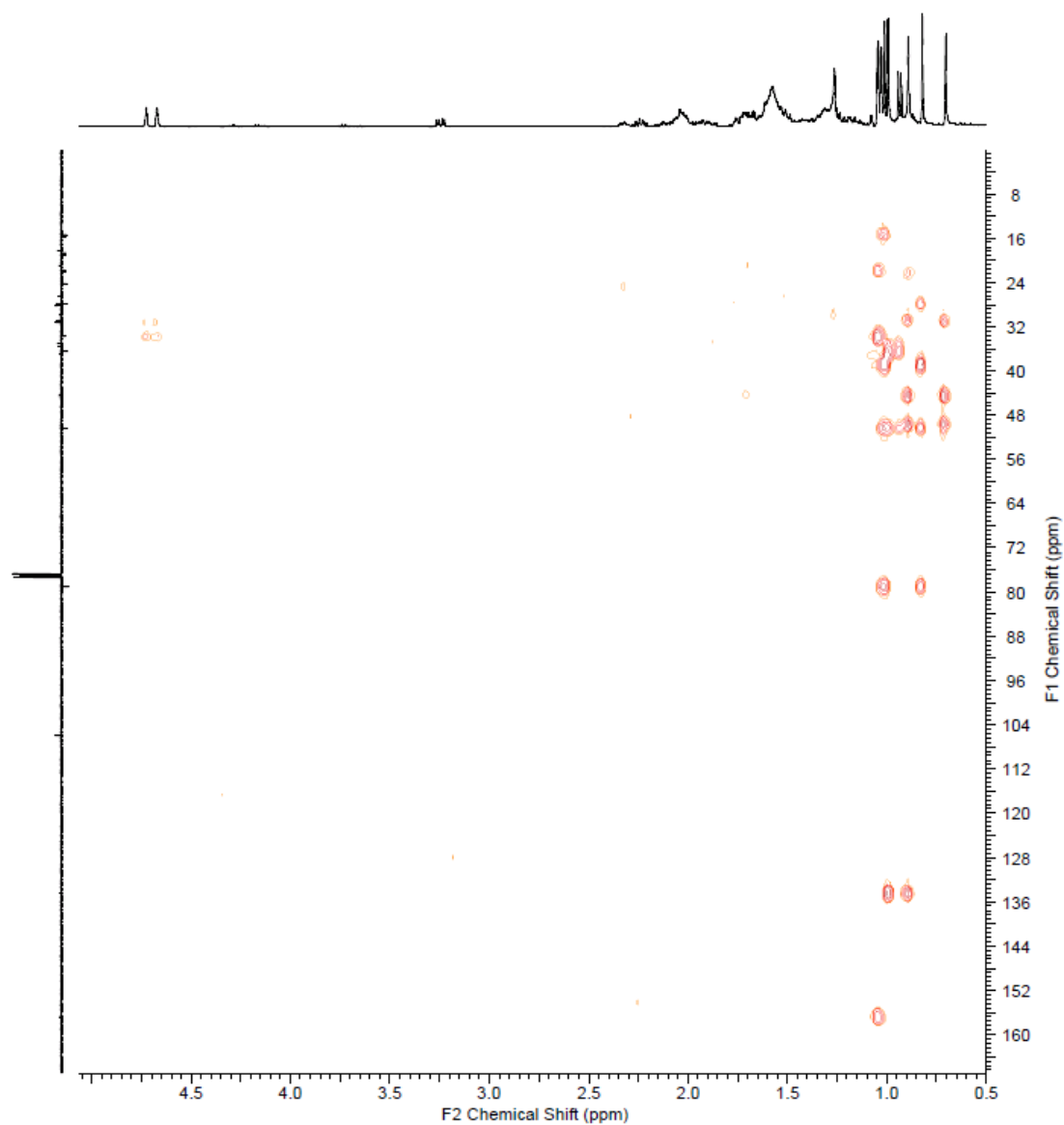


Figure S6. Expanded HMBC spectrum of eburicol in CDCl₃ (400 MHz for ¹H, 25°C)

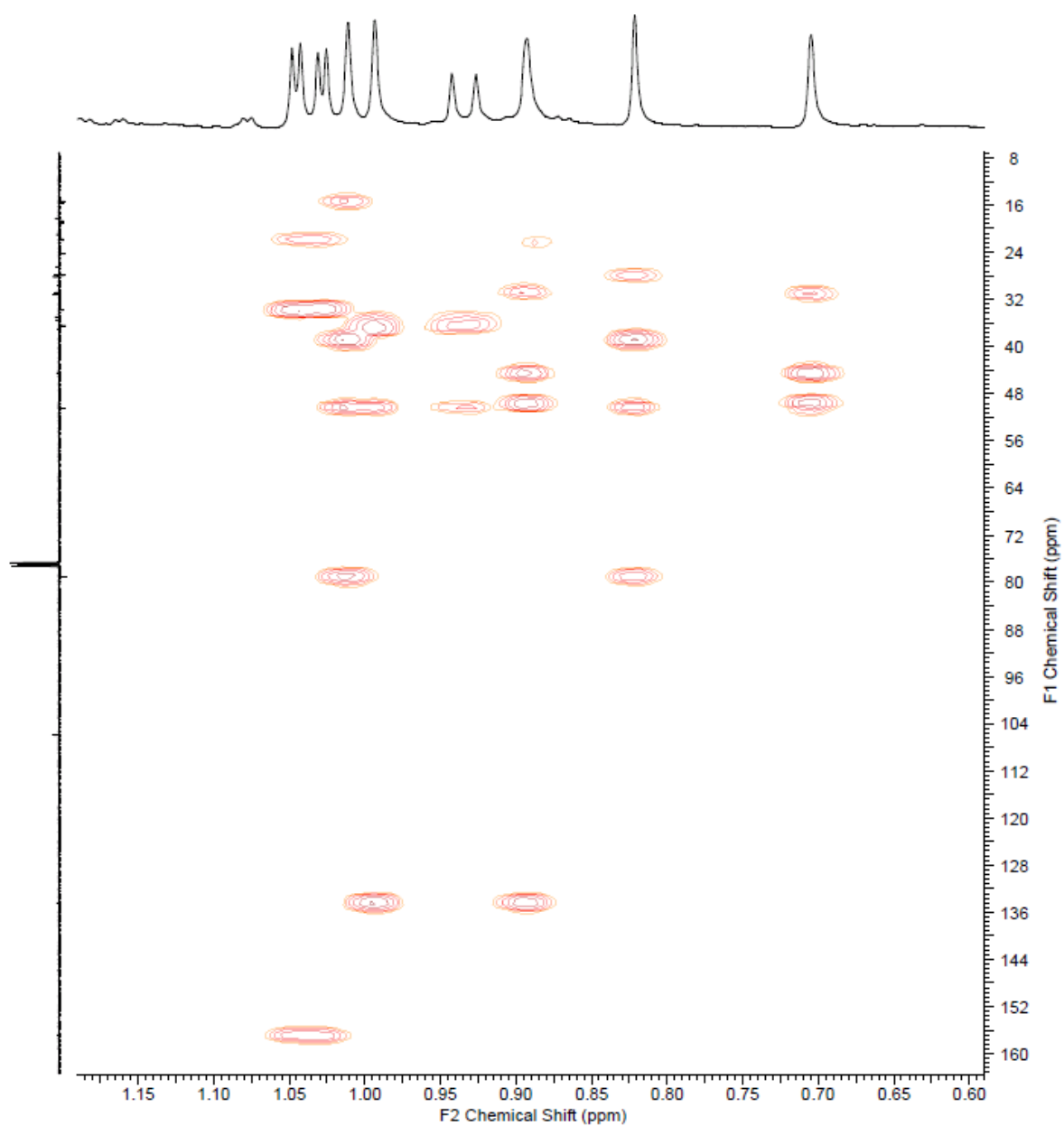


Table S1. Evaluation of antimicrobial activity of eburicol against human pathogenic bacteria (n = 3). Values should be compared to the standard **Streptomycin** results (12 ± 2 at $50 \mu\text{g/mL}$ and 15 ± 2 at $100 \mu\text{g/mL}$ for all strains).

Strains	Inhibition zone (mm) ⁽¹⁾ after treatment with eburicol	
	50 $\mu\text{g/mL}$	100 $\mu\text{g/mL}$
<i>B. cereus</i>	10 \pm 1	11 \pm 1
<i>Bacillus</i> sp.	8 \pm 0	12 \pm 1
<i>L. ivanovii</i>	10 \pm 1	9 \pm 1
<i>S. aureus</i>	7 \pm 0	24 \pm 4
<i>C. freundii</i>	8 \pm 1	11 \pm 2
<i>E. coli</i>	10 \pm 1	ND
<i>Salmonella</i> spp.	9 \pm 1	8 \pm 2

(1): $\emptyset \leq 8\text{mm}$: no significant antimicrobial activity; $8 < \emptyset \leq 12\text{ mm}$: weak antimicrobial activity; $12 < \emptyset \leq 14\text{ mm}$: significant antimicrobial activity; $\emptyset > 14\text{ mm}$: high antimicrobial activity. ND: not determined