

Supplementary Material

The Structure of the Lipid A of Gram-Negative Cold-Adapted Bacteria Isolated from Antarctic Environments

Flaviana Di Lorenzo^{1*}, Francesca Crisafi², Violetta La Cono², Michail M Yakimov², Antonio Molinaro¹, Alba Silipo^{1*}

¹ Department of Chemical Sciences, University of Napoli Federico II, Complesso Universitario Monte S. Angelo, Via Cintia 4, I-80126 Napoli, Italy; flaviana.dilorenzo@unina.it, molinaro@unina.it, silipo@unina.it

² Marine Molecular Microbiology & Biotechnology Institute for Biological Resources and Marine Biotechnologies CNR-IRBIM Sede di Messina Spianata San Raineri, 86

98122 Messina, Italy; francesca.crisafi@irbim.cnr.it, violetta.lacono@irbim.cnr.it

* Correspondence: flaviana.dilorenzo@unina.it (F.D.L.); silipo@unina.it (A.S.);

Figure S1

Figure S2

Figure S3

Figure S4

Figure S1. Field emission scanning electron microscopy (FESEM) micrographs of *P. tetraodonis* SY74 (A) and *P. cryohalolentis* SY185 (B) cultures growing at 0.5°C. Images were obtained with microscope Zeiss Merlin (Carl Zeiss, Oberkochen) using the Everhart Thornley SE-detector and the in-lens secondary electron detector in a 50:50 ratio with an acceleration voltage of 5 kV. Contrast and brightness were adjusted with Adobe Photoshop CS5.

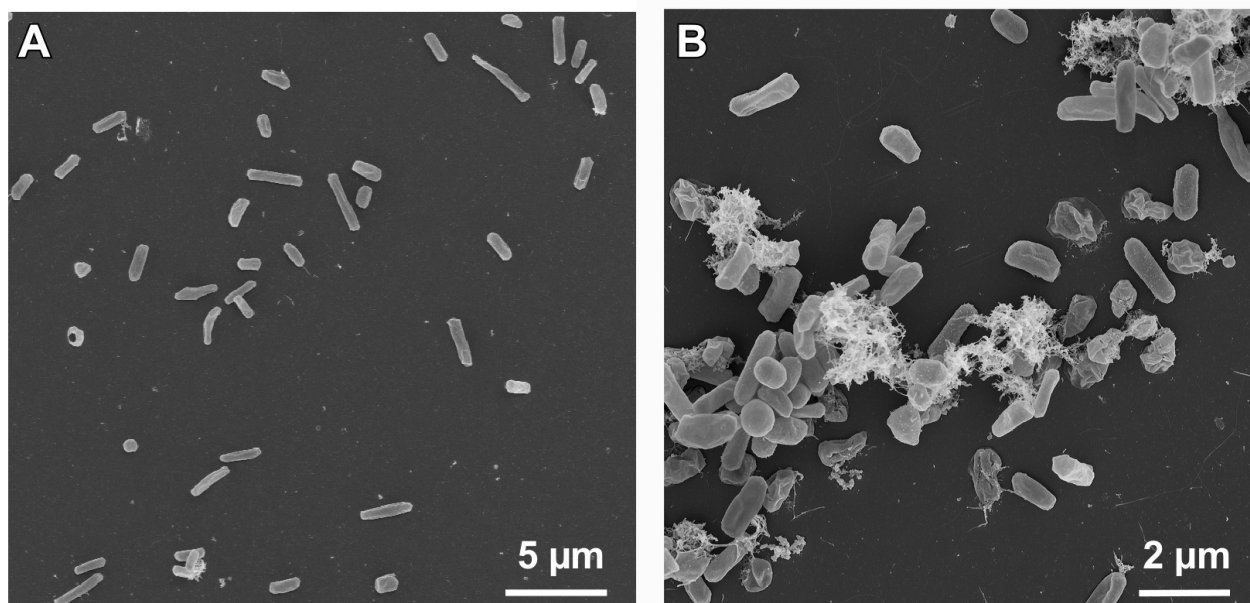


Figure S2. Reflectron MALDI-TOF mass spectrum, recorded in negative polarity, of the *P. arctica* strain SY204b cell pellet. "P" indicates the phosphate group.

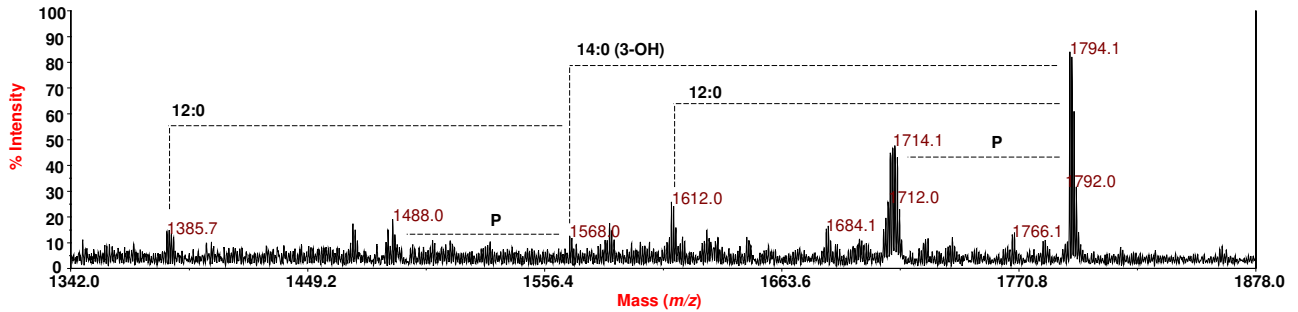


Figure S3. Reflectron MALDI-TOF mass spectrum, recorded in negative polarity, of the cell pellet of *P. cryohalolentis* strain SY185. "P" indicates the phosphate group.

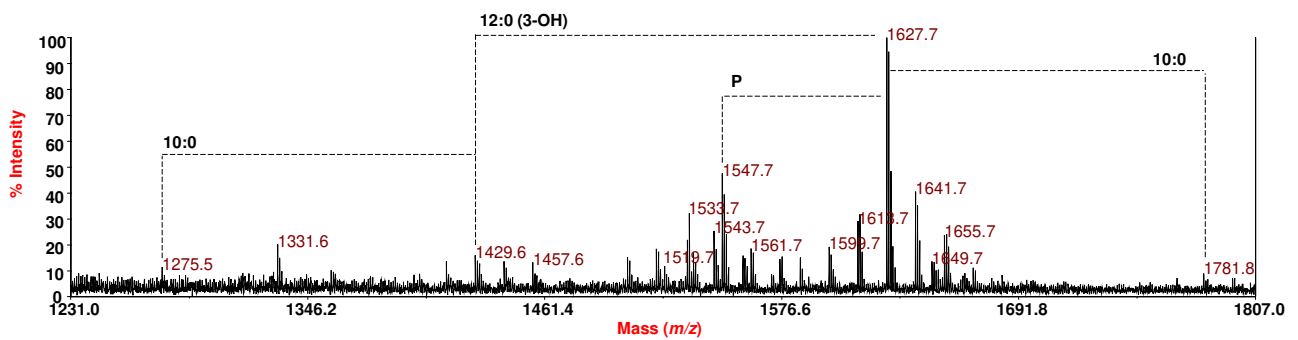


Figure S4. Reflectron MALDI-TOF mass spectrum, recorded in negative polarity, of the cell pellet of *P. tetradonis* strain SY174. "P" indicates the phosphate group.

