

Supplementary Materials for

Bioactive Steroids from the Red Sea Soft Coral *Sinularia polydactyla*

Mohamed A. Tammam ^{1,2}, Lucie Rárová ^{3,*}, Marie Kvasnicová ³, Gabriel Gonzalez ³, Ahmed M. Emam ², Aldoushy Mahdy ⁴, Miroslav Strnad ³, Efstathia Ioannou ¹ and Vassilios Roussis ^{1,*}

¹ Section of Pharmacognosy and Chemistry of Natural Products, Department of Pharmacy, National and Kapodistrian University of Athens, Panepistimiopolis Zografou, 15771 Athens, Greece; mtammam@pharm.uoa.gr (M.A.T.); eioannou@pharm.uoa.gr (E.I.)

² Department of Biochemistry, Faculty of Agriculture, Fayoum University, 63514 Fayoum, Egypt; ame01@fayoum.edu.eg (A.M.E.)

³ Laboratory of Growth Regulators, Institute of Experimental Botany of the Czech Academy of Sciences, and Faculty of Science, Palacký University, Šlechtitelů 27, Olomouc CZ-78371, Czech Republic; kvasnicova@ueb.cas.cz (M.K.); gonzalez.gabriel@seznam.cz (G.G.); miroslav.strnad@upol.cz (M.S.)

⁴ Department of Zoology, Faculty of Science, Al-Azhar University (Assiut Branch), 71524 Assiut, Egypt; aldoushy@azhar.edu.eg (A.M.)

* Correspondence: lucie.rarova@upol.cz (L.R.); roussis@pharm.uoa.gr (V.R.); Tel.: +420-5856-34850698 (L.R.); +30-210-727-4592 (V.R.)

Table of Contents

Figure S1. Compounds 3–7, 9–12, 14–20 and 22–26 did not affect the relative amount of E-selectin on the cell surface of endothelial cells that were pretreated with 10 μ M compounds for 30 min and subsequently stimulated with 10 ng/ml TNF α for 4 h. Data are means \pm SDs ($n = 3$).	S3
Figure S2. ^1H NMR spectrum of (9 <i>E</i> ,22 <i>E</i> ,24 <i>R</i>)-3 β -hydroxy-4 α ,24-dimethyl-8,9-seco-5 α -cholesta-9(11),22-dien-8-one (1) in CDCl $_3$.	S4
Figure S3. HSQC spectrum of (9 <i>E</i> ,22 <i>E</i> ,24 <i>R</i>)-3 β -hydroxy-4 α ,24-dimethyl-8,9-seco-5 α -cholesta-9(11),22-dien-8-one (1) in CDCl $_3$.	S4
Figure S4. HMBC spectrum of (9 <i>E</i> ,22 <i>E</i> ,24 <i>R</i>)-3 β -hydroxy-4 α ,24-dimethyl-8,9-seco-5 α -cholesta-9(11),22-dien-8-one (1) in CDCl $_3$.	S5
Figure S5. COSY spectrum of (9 <i>E</i> ,22 <i>E</i> ,24 <i>R</i>)-3 β -hydroxy-4 α ,24-dimethyl-8,9-seco-5 α -cholesta-9(11),22-dien-8-one (1) in CDCl $_3$.	S5
Figure S6. HR-APCIMS spectrum of (9 <i>E</i> ,22 <i>E</i> ,24 <i>R</i>)-3 β -hydroxy-4 α ,24-dimethyl-8,9-seco-5 α -cholesta-9(11),22-dien-8-one (1).	S6
Figure S7. ^1H NMR spectrum of (9 <i>E</i>)-3 β -hydroxy-4 α ,24-dimethyl-8,9-seco-5 α -cholesta-9(11),24(28)-dien-8-one (2) in CDCl $_3$.	S6
Figure S8. COSY spectrum of (9 <i>E</i>)-3 β -hydroxy-4 α ,24-dimethyl-8,9-seco-5 α -cholesta-9(11),24(28)-dien-8-one (2) in CDCl $_3$.	S7
Figure S9. HR-APCIMS spectrum of (9 <i>E</i>)-3 β -hydroxy-4 α ,24-dimethyl-8,9-seco-5 α -cholesta-9(11),24(28)-dien-8-one (2).	S7
Figure S10. ^1H NMR spectrum of (22 <i>E</i> ,24 <i>R</i>)-4 α ,24-dimethyl-5 α -cholest-22-en-3 β ,8 β -diol (6) in CDCl $_3$.	S8
Figure S11. HSQC spectrum of (22 <i>E</i> ,24 <i>R</i>)-4 α ,24-dimethyl-5 α -cholest-22-en-3 β ,8 β -diol (6) in CDCl $_3$.	S8
Figure S12. HMBC spectrum of (22 <i>E</i> ,24 <i>R</i>)-4 α ,24-dimethyl-5 α -cholest-22-en-3 β ,8 β -diol (6) in CDCl $_3$.	S9
Figure S13. COSY spectrum of (22 <i>E</i> ,24 <i>R</i>)-4 α ,24-dimethyl-5 α -cholest-22-en-3 β ,8 β -diol (6) in CDCl $_3$.	S9
Figure S14. HR-APCIMS spectrum of (22 <i>E</i> ,24 <i>R</i>)-4 α ,24-dimethyl-5 α -cholest-22-en-3 β ,8 β -diol (6).	S10
Figure S15. ^1H NMR spectrum of (23 <i>E</i>)-22 α ,28-epidioxy-4 α ,24-dimethyl-5 α -cholest-23-en-3 β ,8 β -diol (8) in CDCl $_3$.	S10
Figure S16. HSQC spectrum of (23 <i>E</i>)-22 α ,28-epidioxy-4 α ,24-dimethyl-5 α -cholest-23-en-3 β ,8 β -diol (8) in CDCl $_3$.	S11
Figure S17. HMBC spectrum of (23 <i>E</i>)-22 α ,28-epidioxy-4 α ,24-dimethyl-5 α -cholest-23-en-3 β ,8 β -diol (8) in CDCl $_3$.	S11
Figure S18. COSY spectrum of (23 <i>E</i>)-22 α ,28-epidioxy-4 α ,24-dimethyl-5 α -cholest-23-en-3 β ,8 β -diol (8) in CDCl $_3$.	S12
Figure S19. HR-APCIMS spectrum of (23 <i>E</i>)-22 α ,28-epidioxy-4 α ,24-dimethyl-5 α -cholest-23-en-3 β ,8 β -diol (8).	S12
Figure S20. ^1H NMR spectrum of (23 <i>E</i>)-22 α ,28-epidioxy-4 α ,24-dimethyl-5 α -cholest-23-en-3 β ,8 β ,11 β -triol (13) in CDCl $_3$.	S13
Figure S21. HSQC spectrum of (23 <i>E</i>)-22 α ,28-epidioxy-4 α ,24-dimethyl-5 α -cholest-23-en-3 β ,8 β ,11 β -triol (13) in CDCl $_3$.	S13
Figure S22. HMBC spectrum of (23 <i>E</i>)-22 α ,28-epidioxy-4 α ,24-dimethyl-5 α -cholest-23-en-3 β ,8 β ,11 β -triol (13) in CDCl $_3$.	S14
Figure S23. COSY spectrum of (23 <i>E</i>)-22 α ,28-epidioxy-4 α ,24-dimethyl-5 α -cholest-23-en-3 β ,8 β ,11 β -triol (13) in CDCl $_3$.	S14
Figure S24. HR-APCIMS spectrum of (23 <i>E</i>)-22 α ,28-epidioxy-4 α ,24-dimethyl-5 α -cholest-23-en-3 β ,8 β ,11 β -triol (13).	S15
Figure S25. ^1H NMR spectrum of (22 <i>E</i>)-24-methyl-cholesta-5,22,24(28)-trien-3 β ,19-diol (20) in CDCl $_3$.	S15
Figure S26. HSQC spectrum of (22 <i>E</i>)-24-methyl-cholesta-5,22,24(28)-trien-3 β ,19-diol (20) in CDCl $_3$.	S16
Figure S27. HMBC spectrum of (22 <i>E</i>)-24-methyl-cholesta-5,22,24(28)-trien-3 β ,19-diol (20) in CDCl $_3$.	S16
Figure S28. COSY spectrum of (22 <i>E</i>)-24-methyl-cholesta-5,22,24(28)-trien-3 β ,19-diol (20) in CDCl $_3$.	S17
Figure S29. HR-ESIMS spectrum of (22 <i>E</i>)-24-methyl-cholesta-5,22,24(28)-trien-3 β ,19-diol (20).	S17

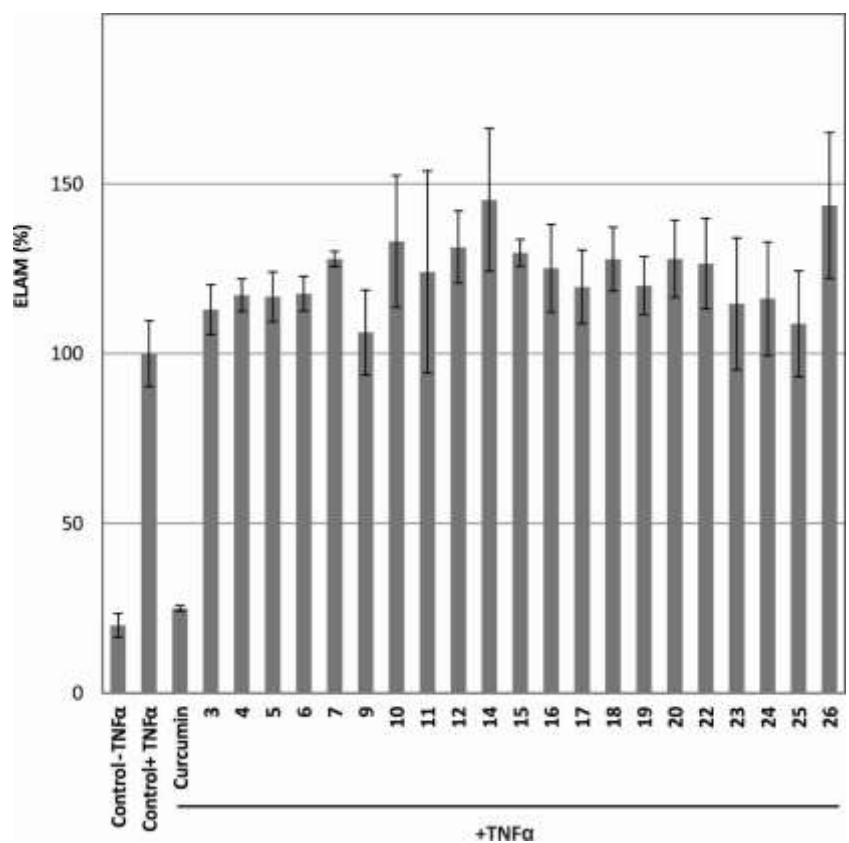


Figure S1. Compounds 3–7, 9–12, 14–20 and 22–26 did not affect the relative amount of E-selectin on the cell surface of endothelial cells that were pretreated with 10 μ M compounds for 30 min and subsequently stimulated with 10 ng/ml TNF α for 4 h. Data are means \pm SDs ($n = 3$).

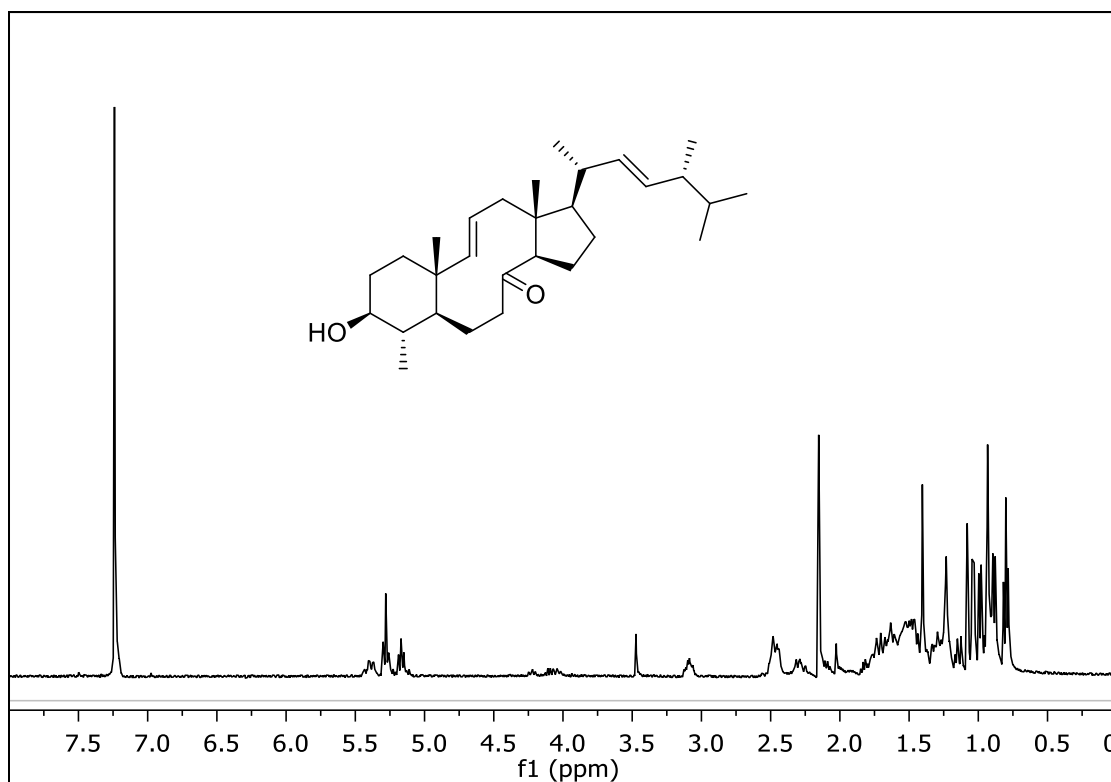


Figure S2. ¹H NMR spectrum of (9*E*,22*E*,24*R*)-3β-hydroxy-4α,24-dimethyl-8,9-seco-5α-cholesta-9(11),22-dien-8-one (**1**) in CDCl₃.

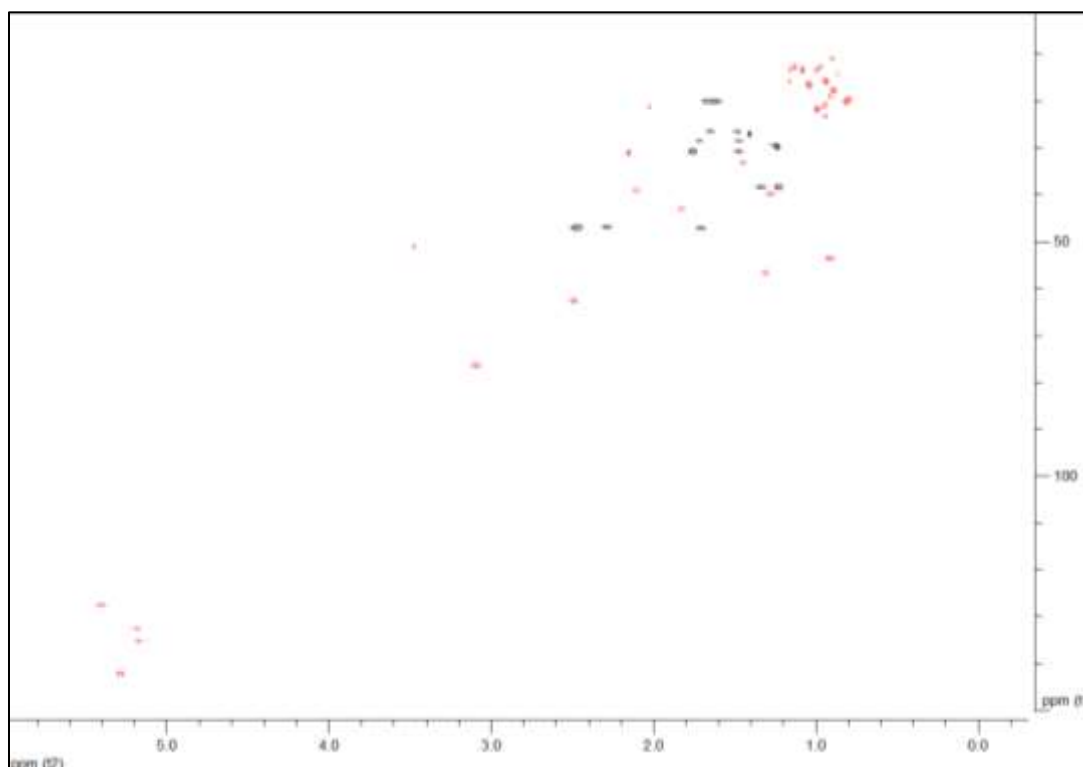


Figure S3. HSQC spectrum of (9*E*,22*E*,24*R*)-3β-hydroxy-4α,24-dimethyl-8,9-seco-5α-cholesta-9(11),22-dien-8-one (**1**) in CDCl₃.

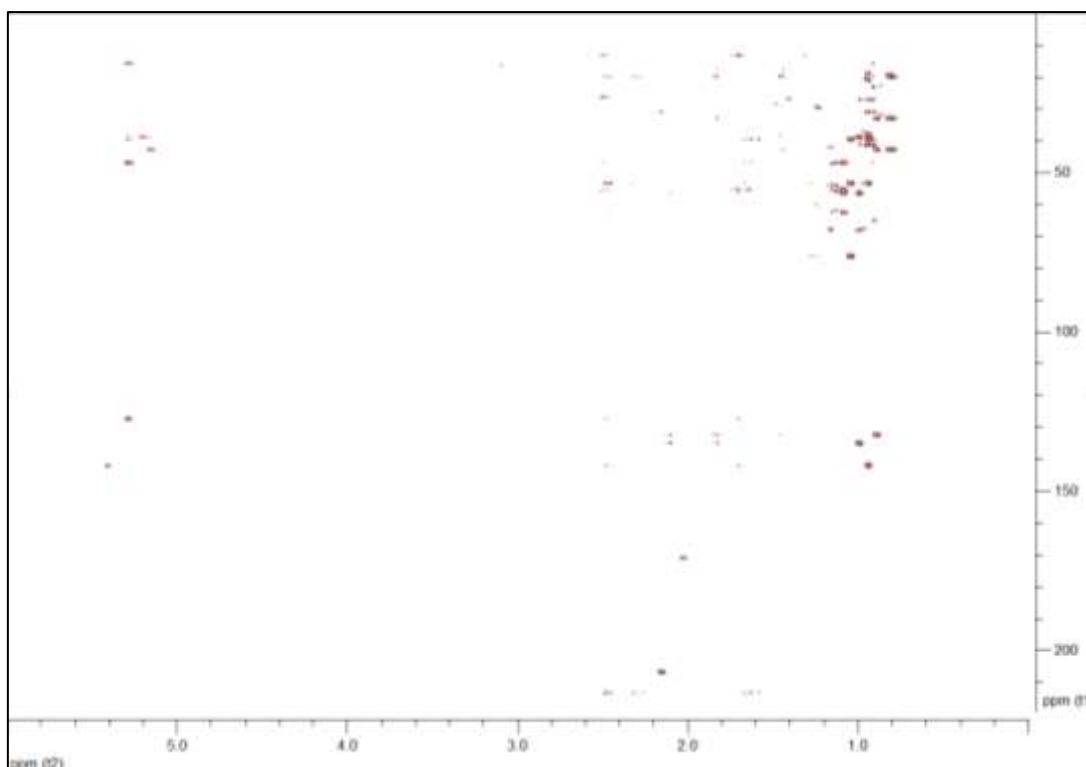


Figure S4. HMBC spectrum of (9*E*,22*E*,24*R*)-3 β -hydroxy-4 α ,24-dimethyl-8,9-seco-5 α -cholesta-9(11),22-dien-8-one (**1**) in CDCl₃.

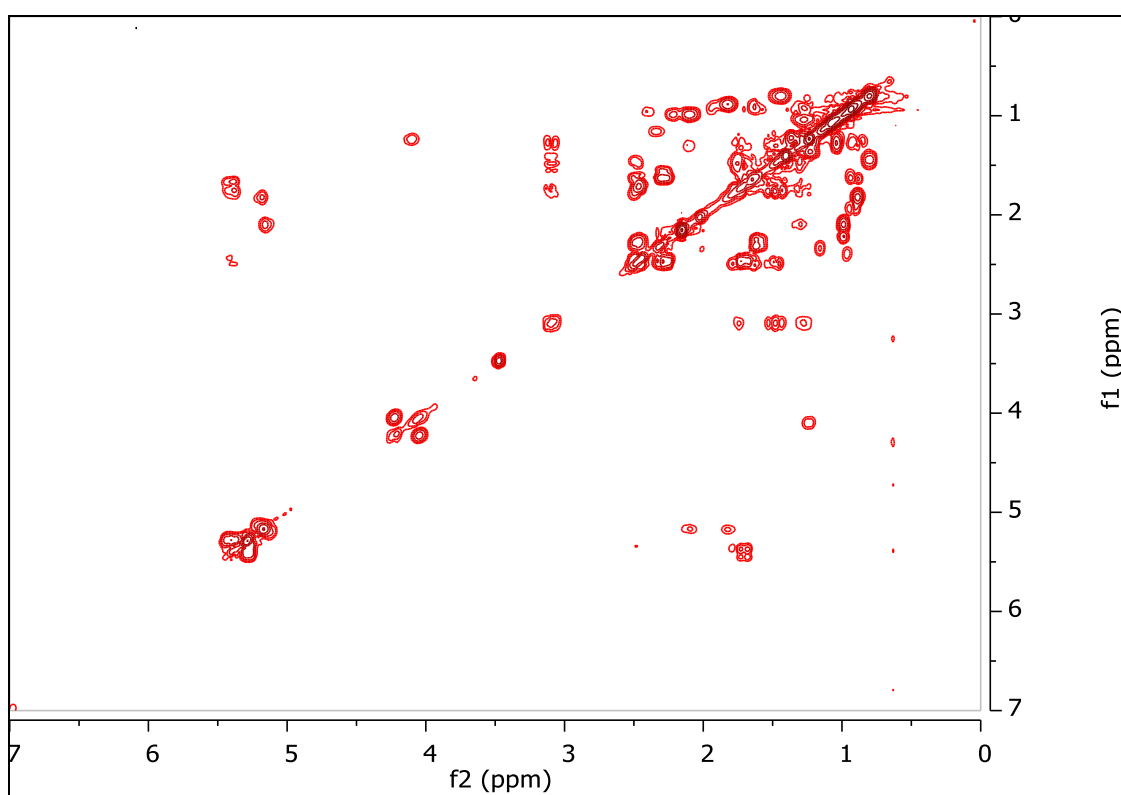


Figure S5. COSY spectrum of (9*E*,22*E*,24*R*)-3 β -hydroxy-4 α ,24-dimethyl-8,9-seco-5 α -cholesta-9(11),22-dien-8-one (**1**) in CDCl₃.

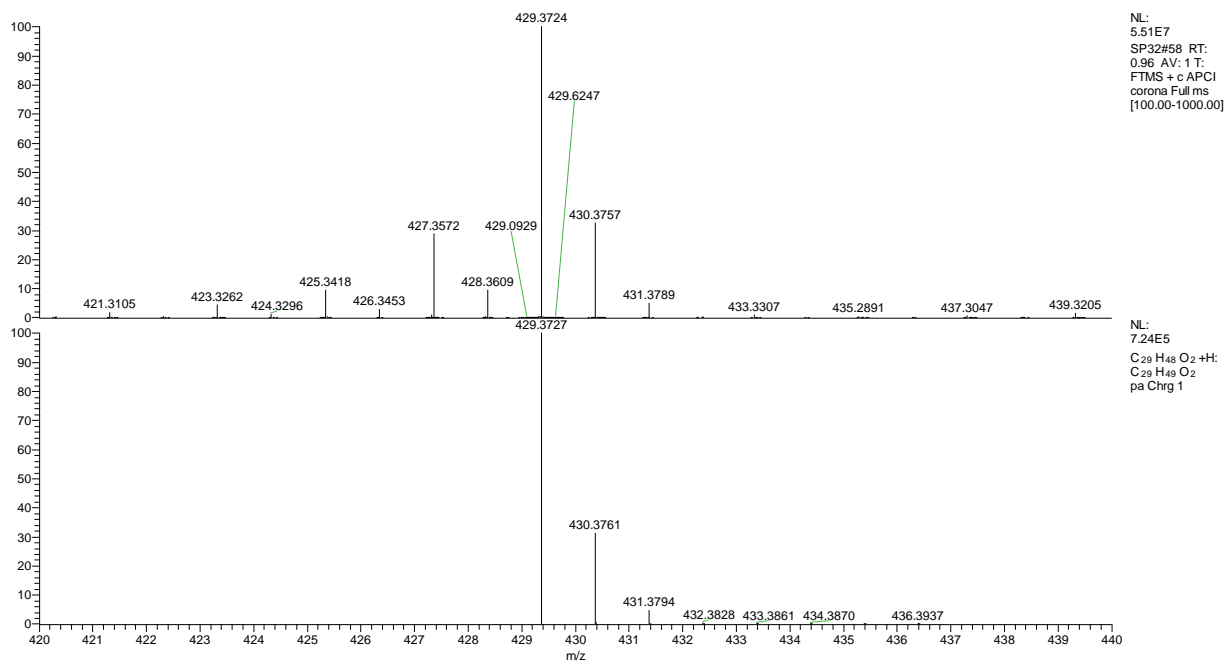


Figure S6. HR-APCIMS spectrum of (9*E*,22*E*,24*R*)-3 β -hydroxy-4 α ,24-dimethyl-8,9-seco-5 α -cholesta-9(11),22-dien-8-one (**1**).

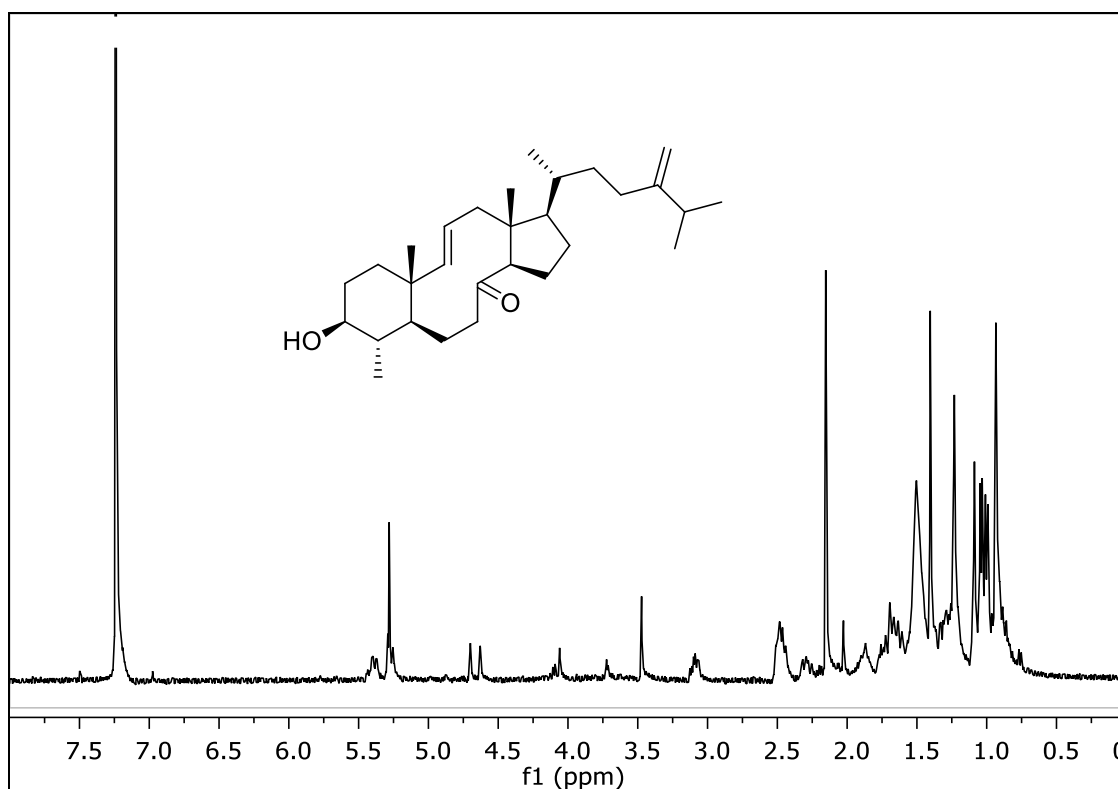


Figure S7. ^1H NMR spectrum of (9*E*)-3 β -hydroxy-4 α ,24-dimethyl-8,9-seco-5 α -cholesta-9(11),24(28)-dien-8-one (**2**) in CDCl_3 .

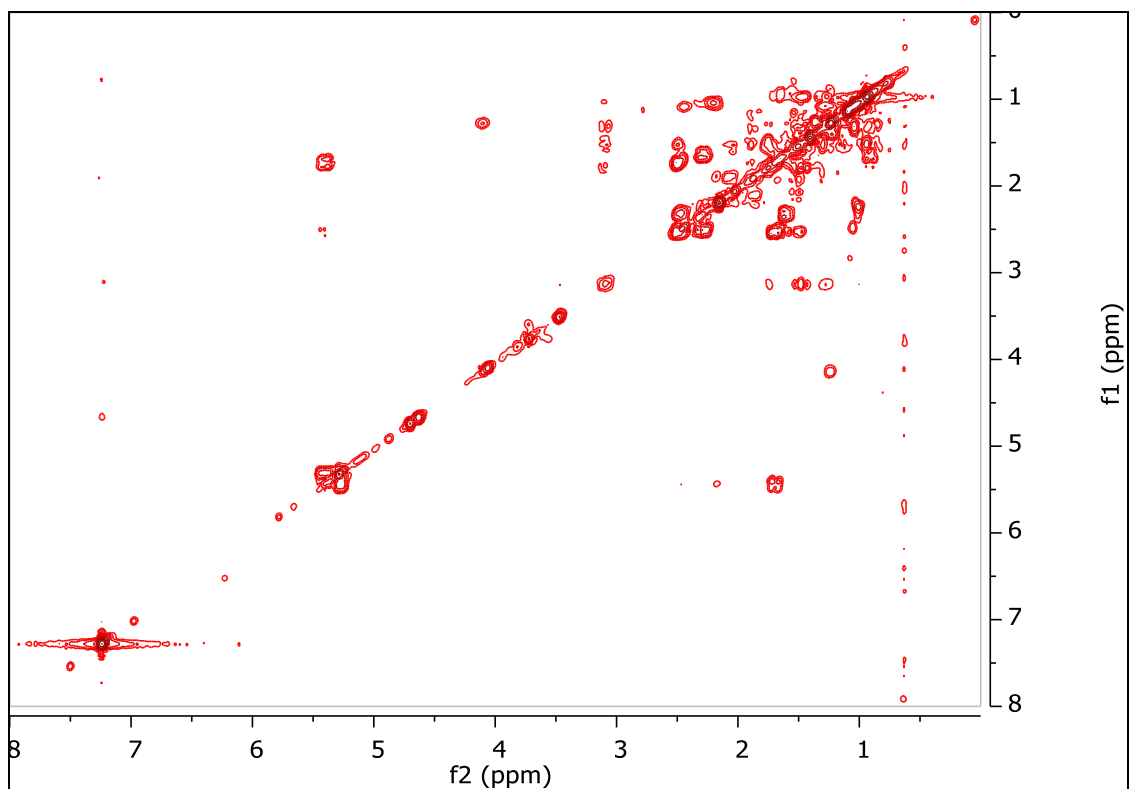


Figure S8. COSY spectrum of *(9E)*-3 β -hydroxy-4 α ,24-dimethyl-8,9-seco-5 α -cholesta-9(11),24(28)-dien-8-one (**2**) in CDCl₃.

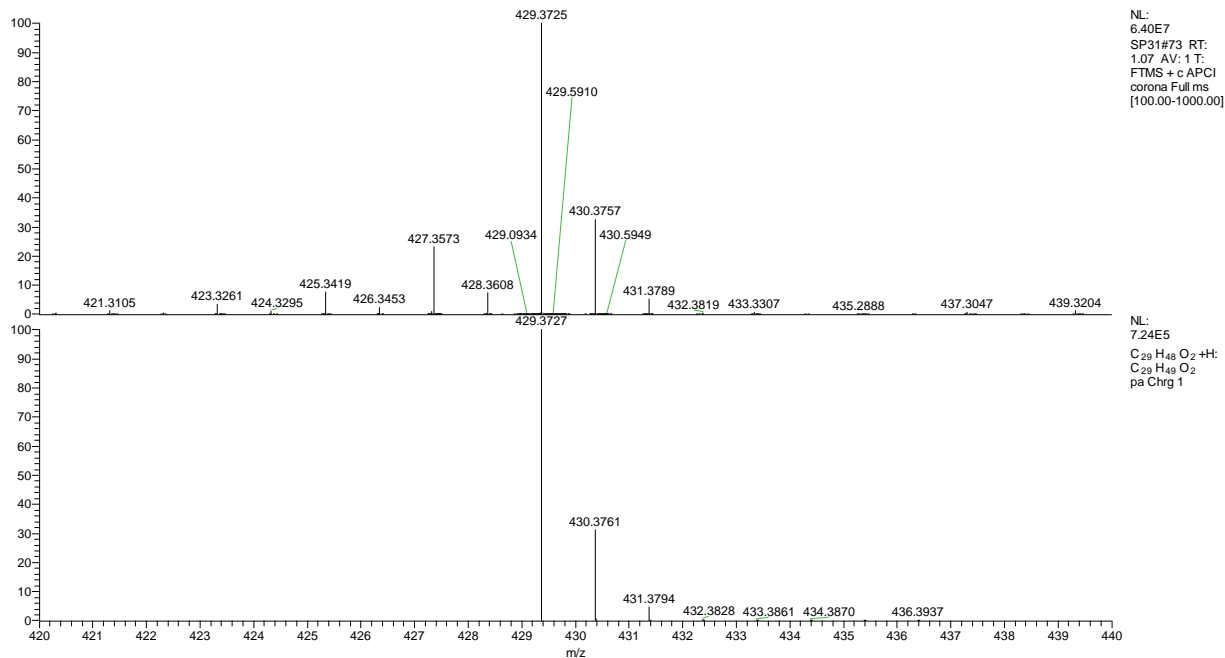


Figure S9. HR-APCIMS spectrum of *(9E)*-3 β -hydroxy-4 α ,24-dimethyl-8,9-seco-5 α -cholesta-9(11),24(28)-dien-8-one (**2**).

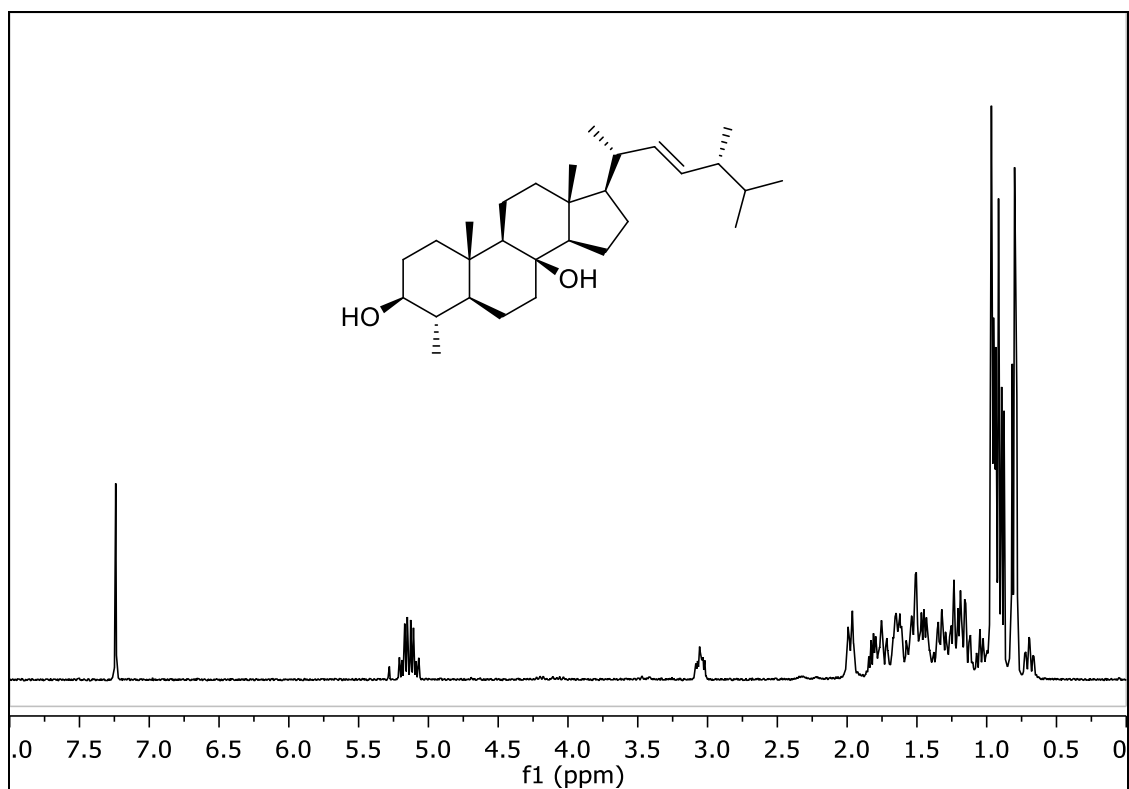


Figure S10. ¹H NMR spectrum of (22*E*,24*R*)-4 α ,24-dimethyl-5 α -cholest-22-en-3 β ,8 β -diol (6) in CDCl₃.

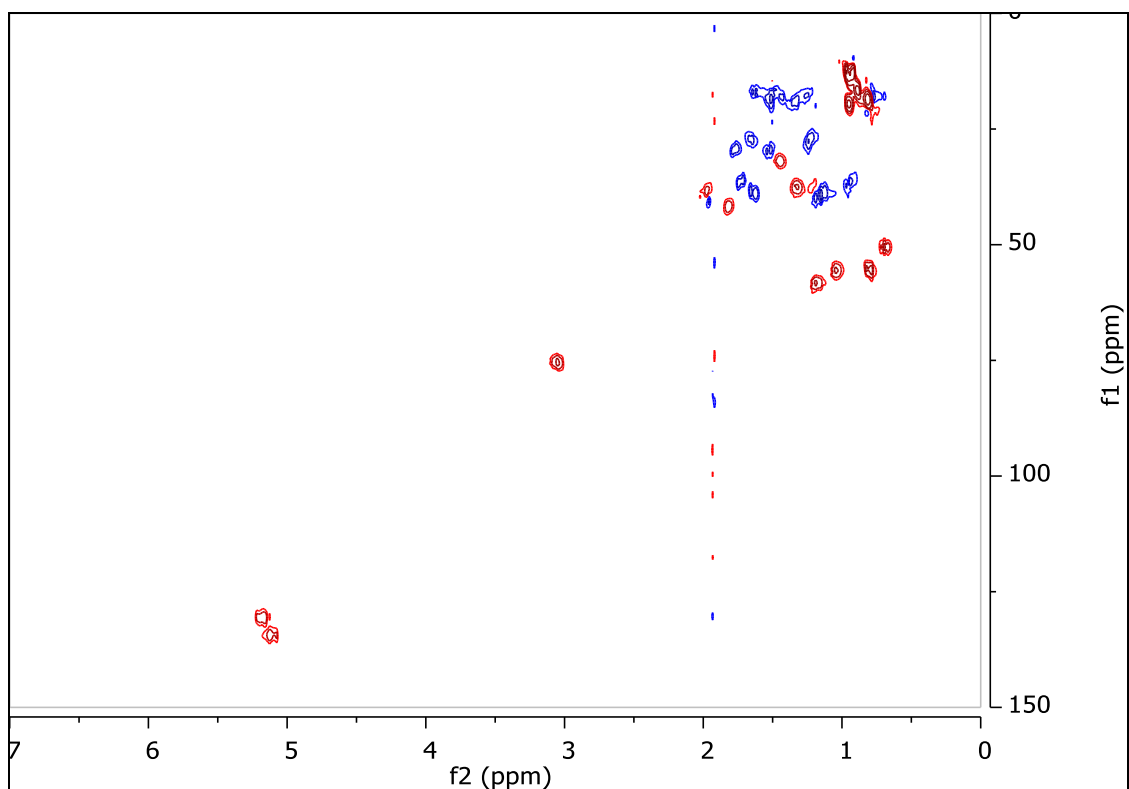


Figure S11. HSQC spectrum of (22*E*,24*R*)-4 α ,24-dimethyl-5 α -cholest-22-en-3 β ,8 β -diol (6) in CDCl₃.

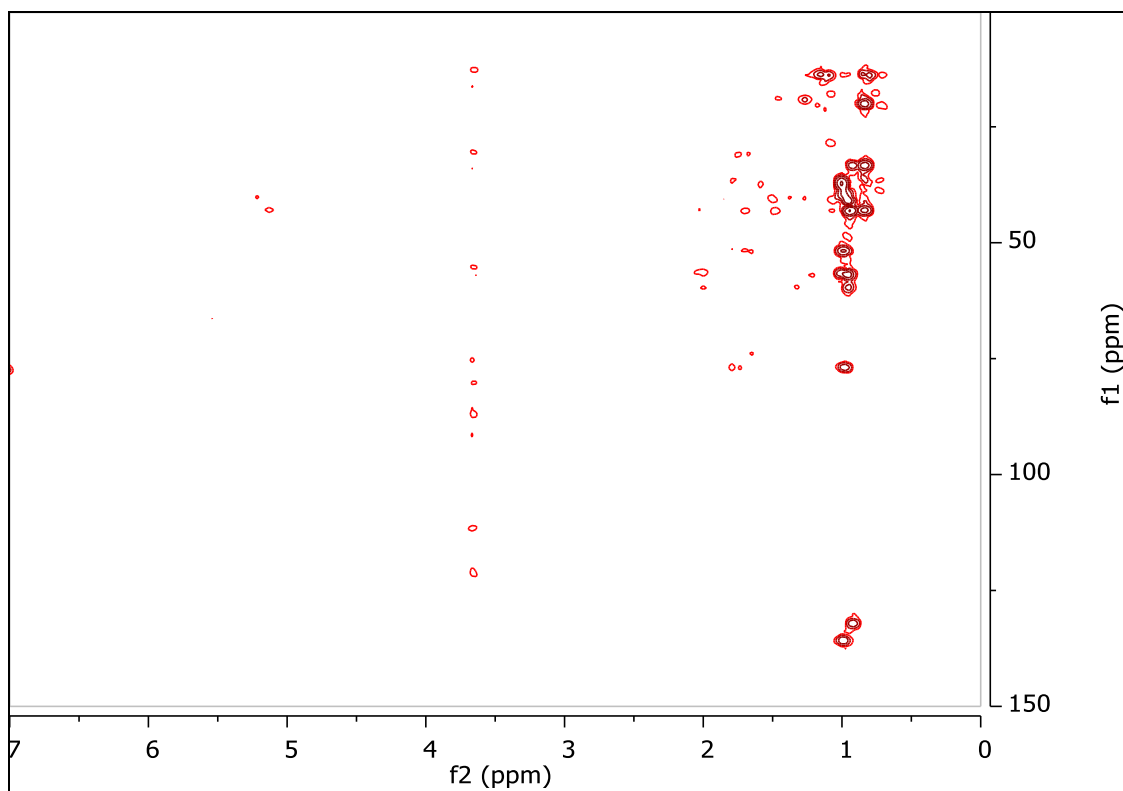


Figure S12. HMBC spectrum of (22*E*,24*R*)-4 α ,24-dimethyl-5 α -cholest-22-en-3 β ,8 β -diol (**6**) in CDCl₃.

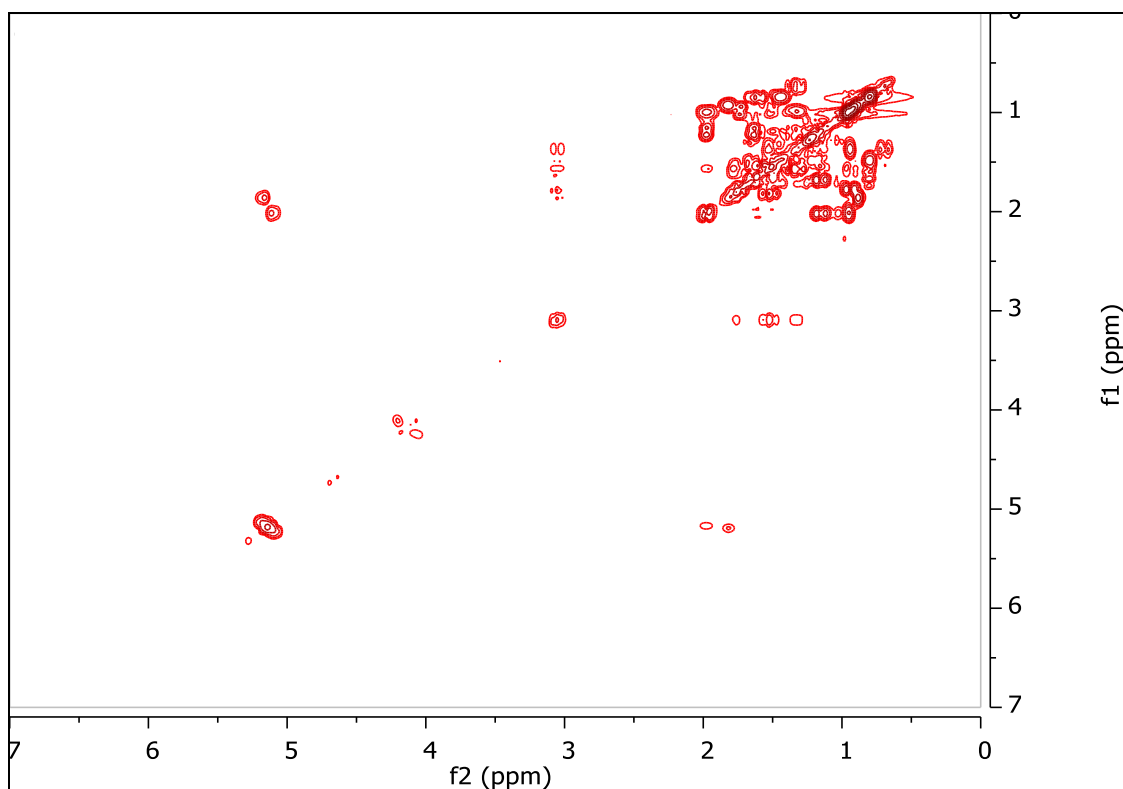


Figure S13. COSY spectrum of (22*E*,24*R*)-4 α ,24-dimethyl-5 α -cholest-22-en-3 β ,8 β -diol (**6**) in CDCl₃.

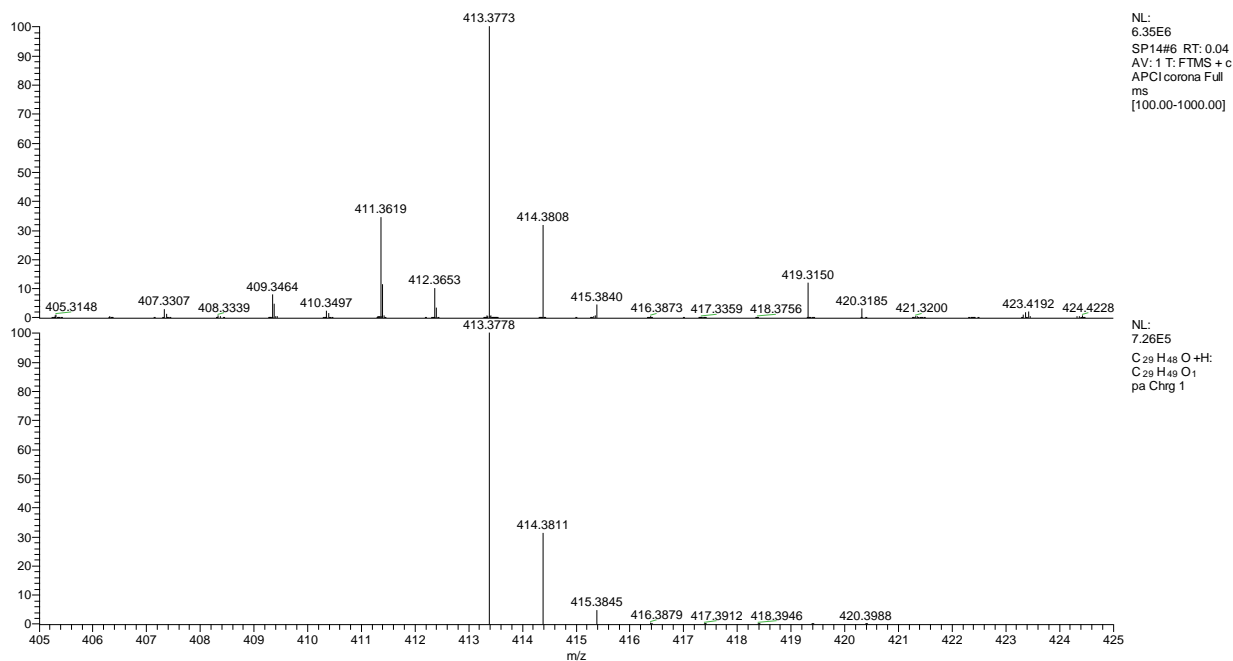


Figure S14. HR-APCIMS spectrum of (22*E*,24*R*)-4 α ,24-dimethyl-5 α -cholest-22-en-3 β ,8 β -diol (**6**).

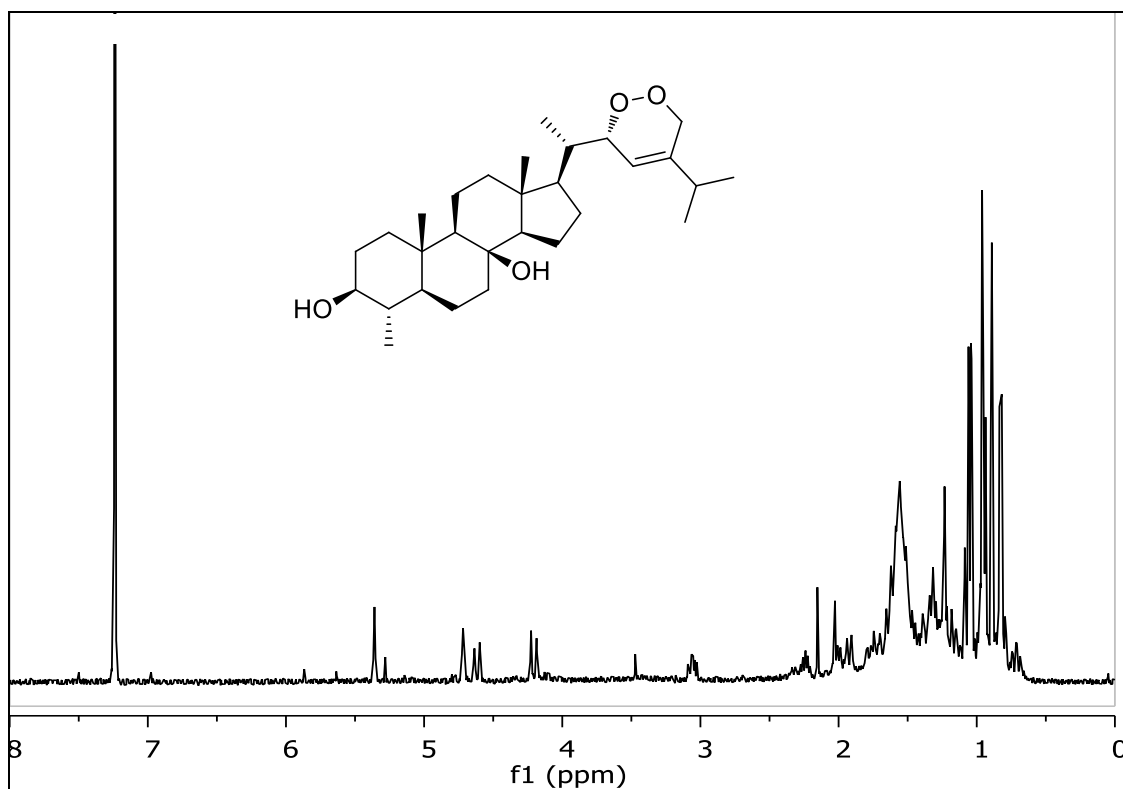


Figure S15. ¹H NMR spectrum of (23*E*)-22 α ,28-epidioxy-4 α ,24-dimethyl-5 α -cholest-23-en-3 β ,8 β -diol (**8**) in CDCl₃.

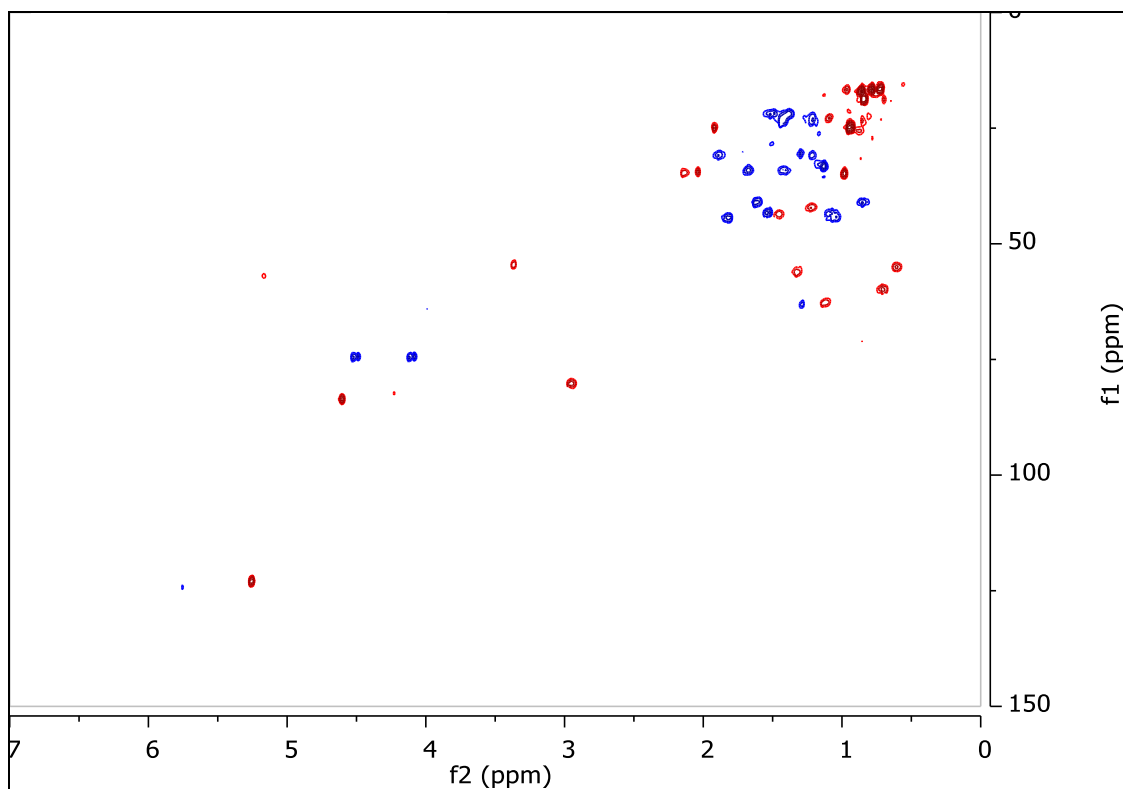


Figure S16. HSQC spectrum of (23*E*)-22 α ,28-epidioxy-4 α ,24-dimethyl-5 α -cholest-23-en-3 β ,8 β -diol (**8**) in CDCl₃.

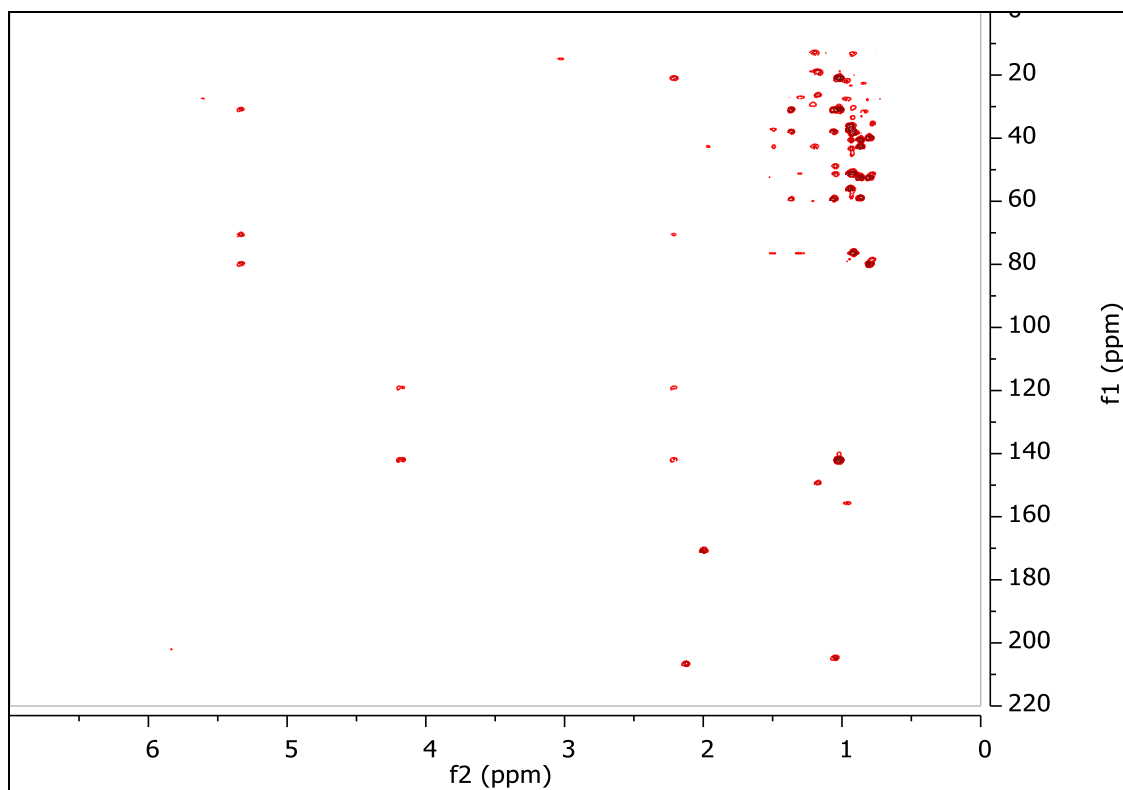


Figure S17. HMBC spectrum of (23*E*)-22 α ,28-epidioxy-4 α ,24-dimethyl-5 α -cholest-23-en-3 β ,8 β -diol (**8**) in CDCl₃.

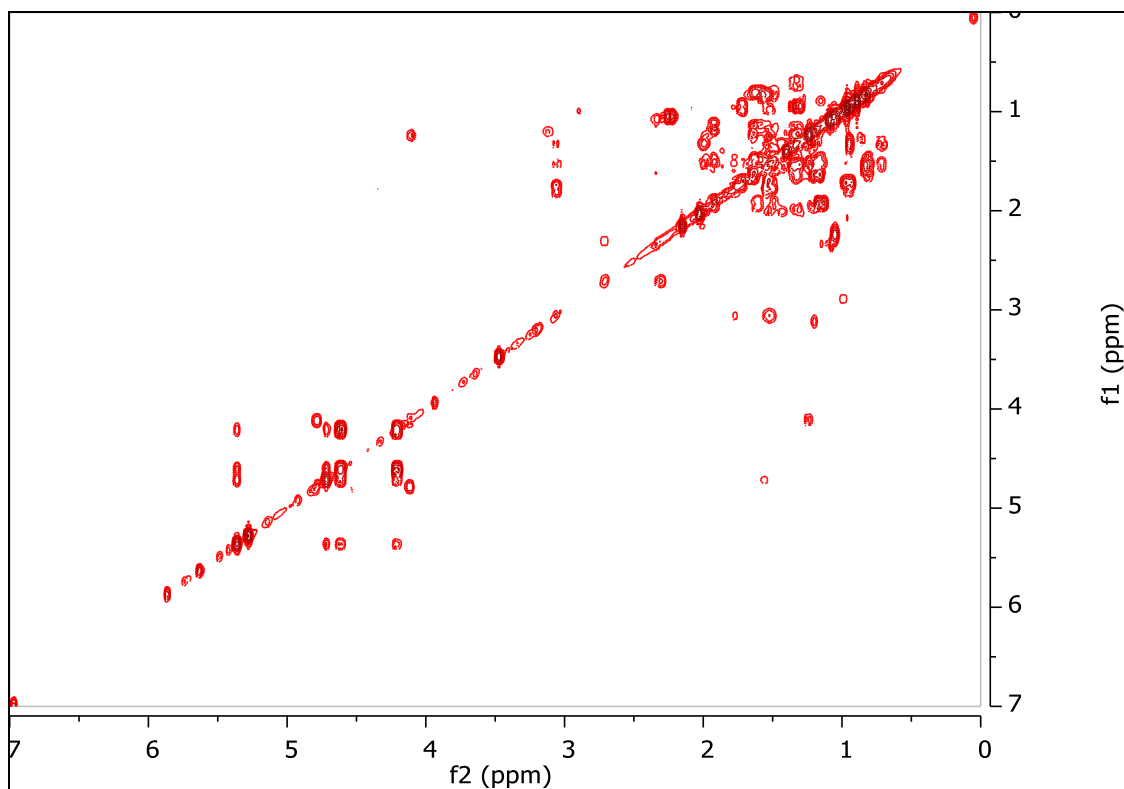


Figure S18. COSY spectrum of (23*E*)-22 α ,28-epidioxy-4 α ,24-dimethyl-5 α -cholest-23-en-3 β ,8 β -diol (**8**) in CDCl₃.

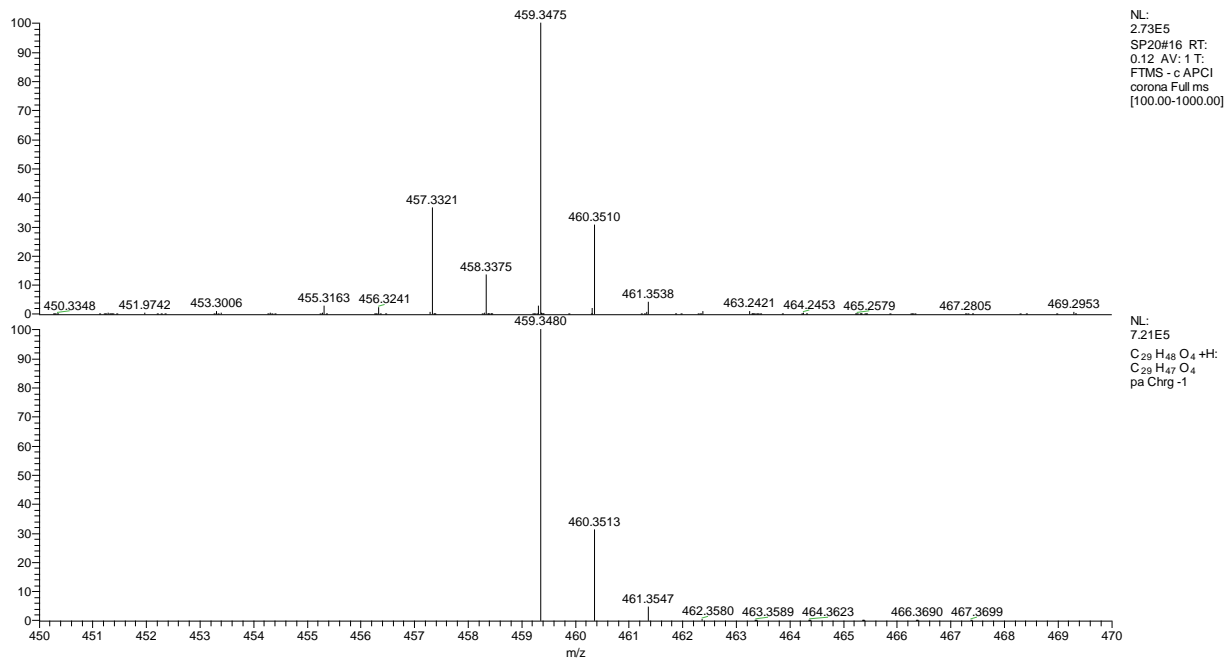


Figure S19. HR-APCIMS spectrum of (23*E*)-22 α ,28-epidioxy-4 α ,24-dimethyl-5 α -cholest-23-en-3 β ,8 β -diol (**8**).

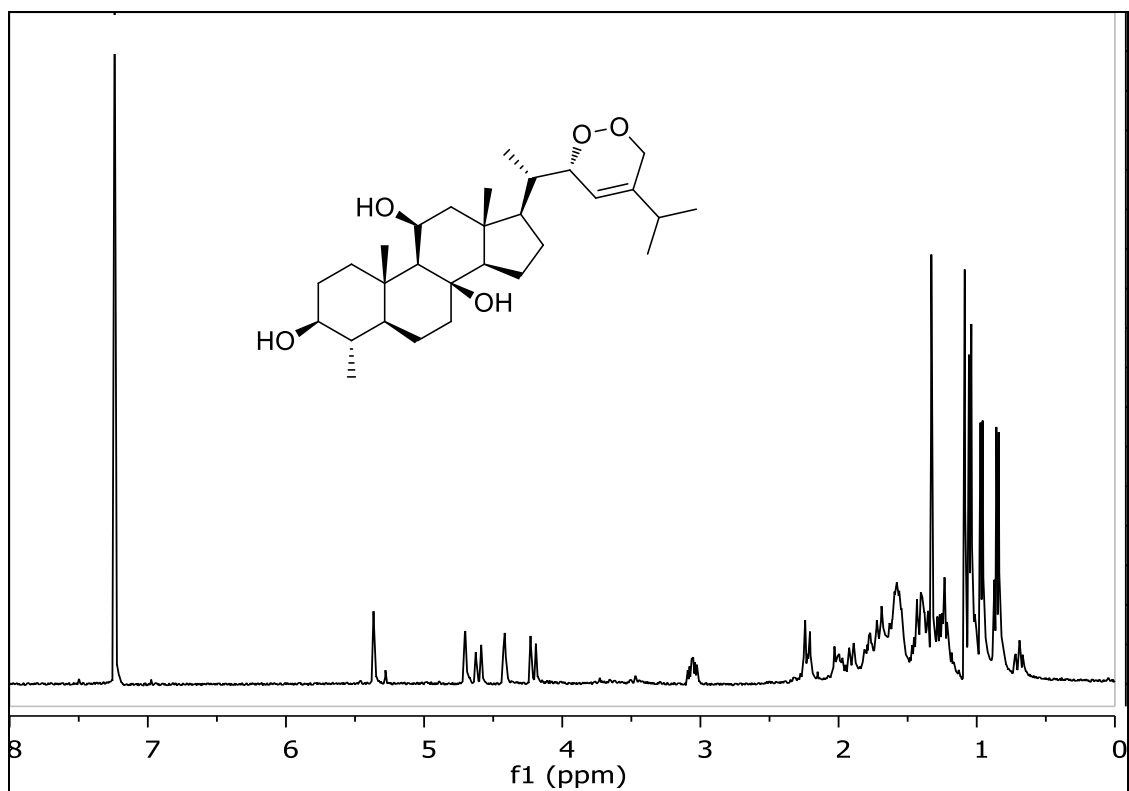


Figure S20. ^1H NMR spectrum of (23*E*)-22 α ,28-epidioxy-4 α ,24-dimethyl-5 α -cholest-23-en-3 β ,8 β ,11 β -triol (**13**) in CDCl_3 .

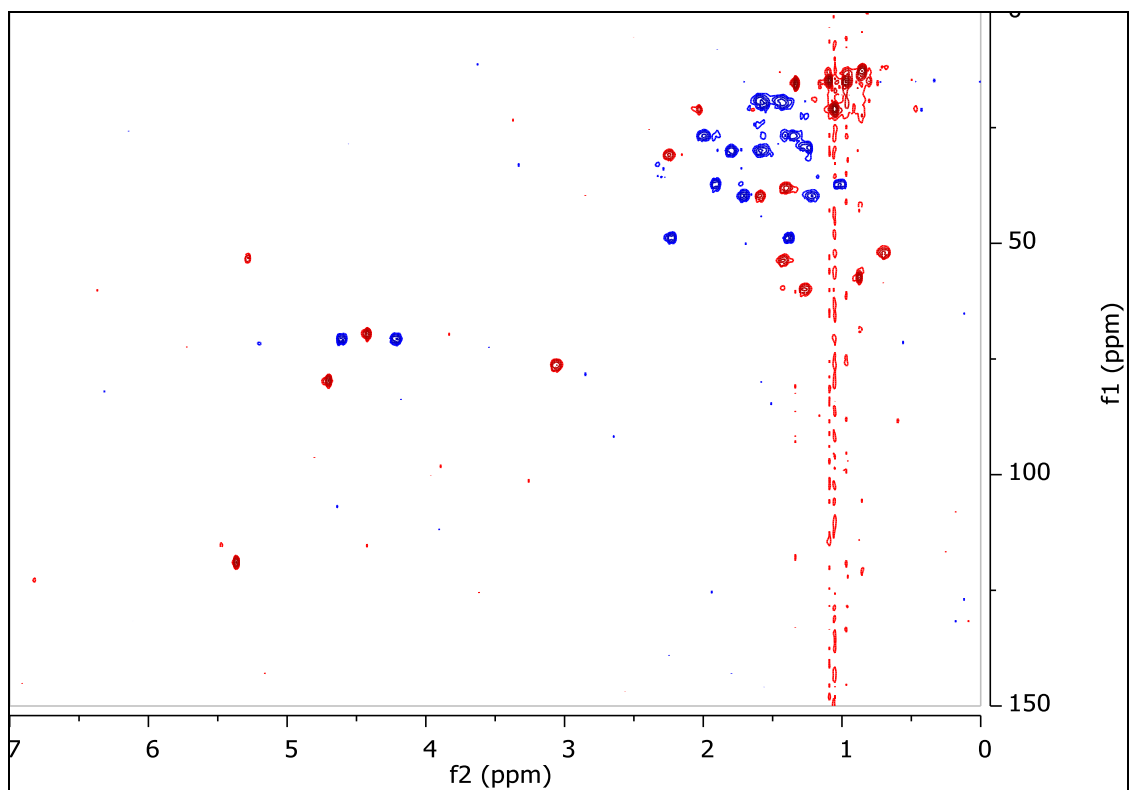


Figure S21. HSQC spectrum of (23*E*)-22 α ,28-epidioxy-4 α ,24-dimethyl-5 α -cholest-23-en-3 β ,8 β ,11 β -triol (**13**) in CDCl_3 .

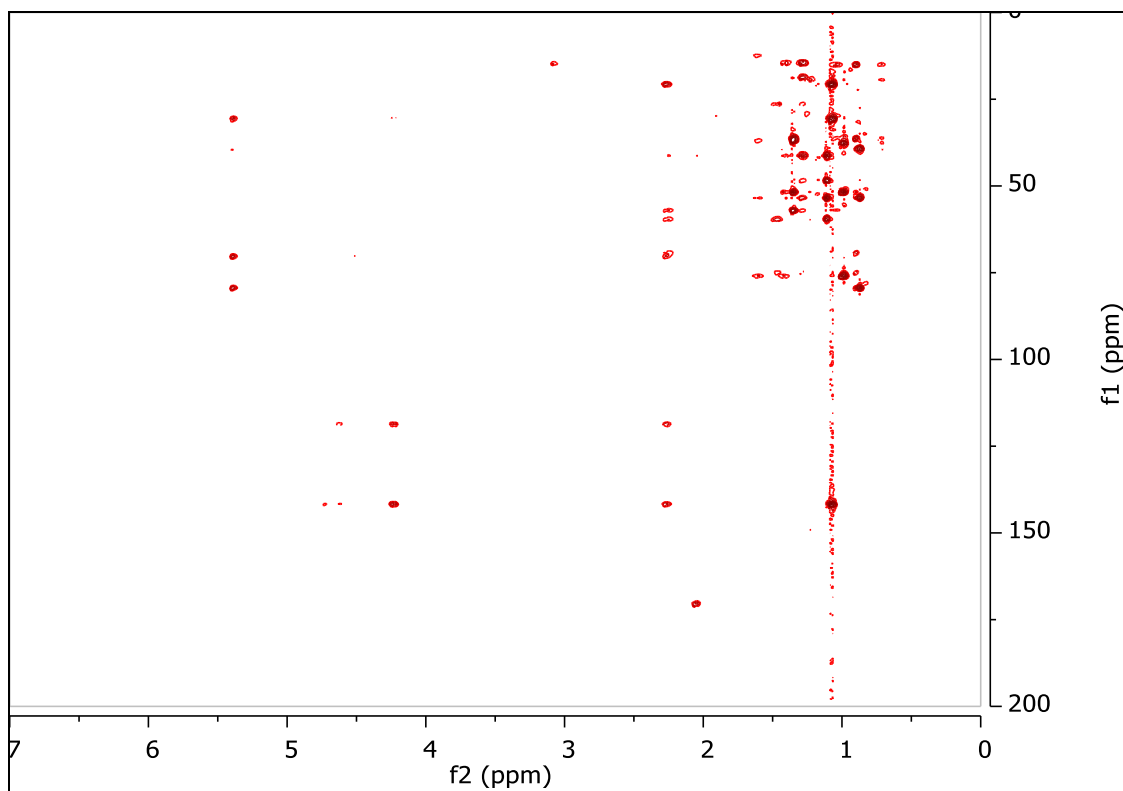


Figure S22. HMBC spectrum of (23*E*)-22 α ,28-epidioxy-4 α ,24-dimethyl-5 α -cholest-23-en-3 β ,8 β ,11 β -triol (**13**) in CDCl₃.

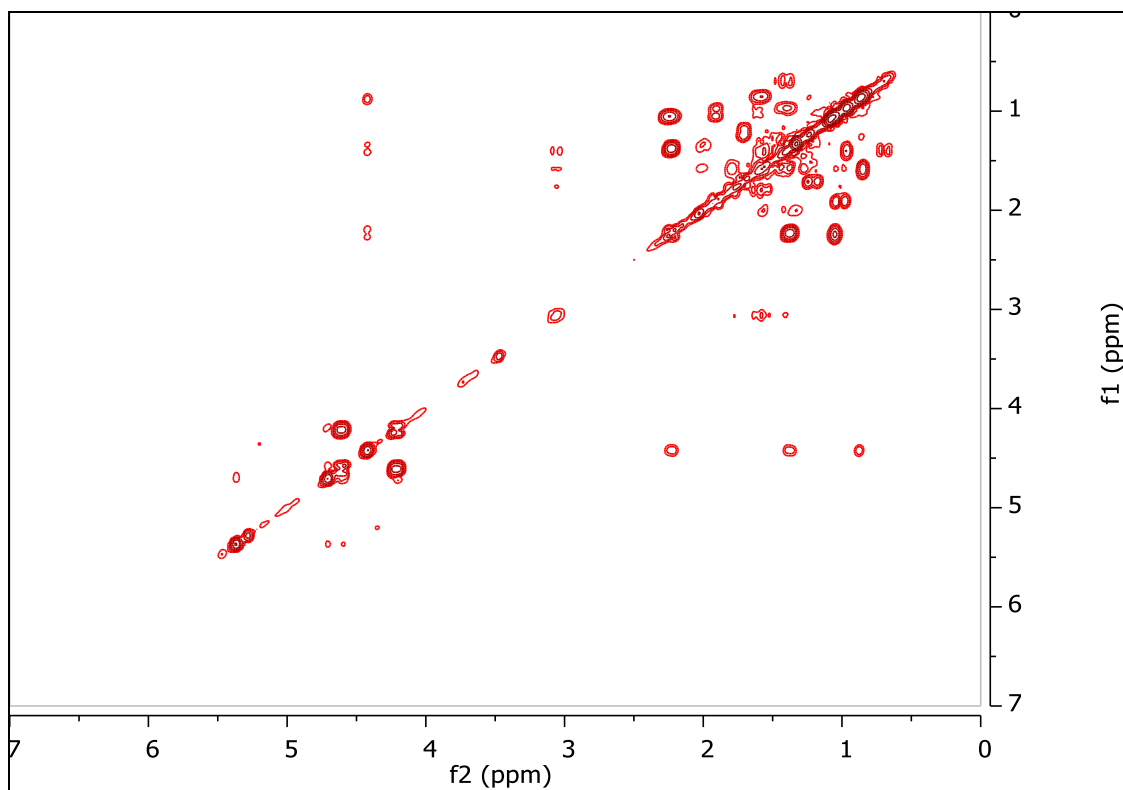


Figure S23. COSY spectrum of (23*E*)-22 α ,28-epidioxy-4 α ,24-dimethyl-5 α -cholest-23-en-3 β ,8 β ,11 β -triol (**13**) in CDCl₃.

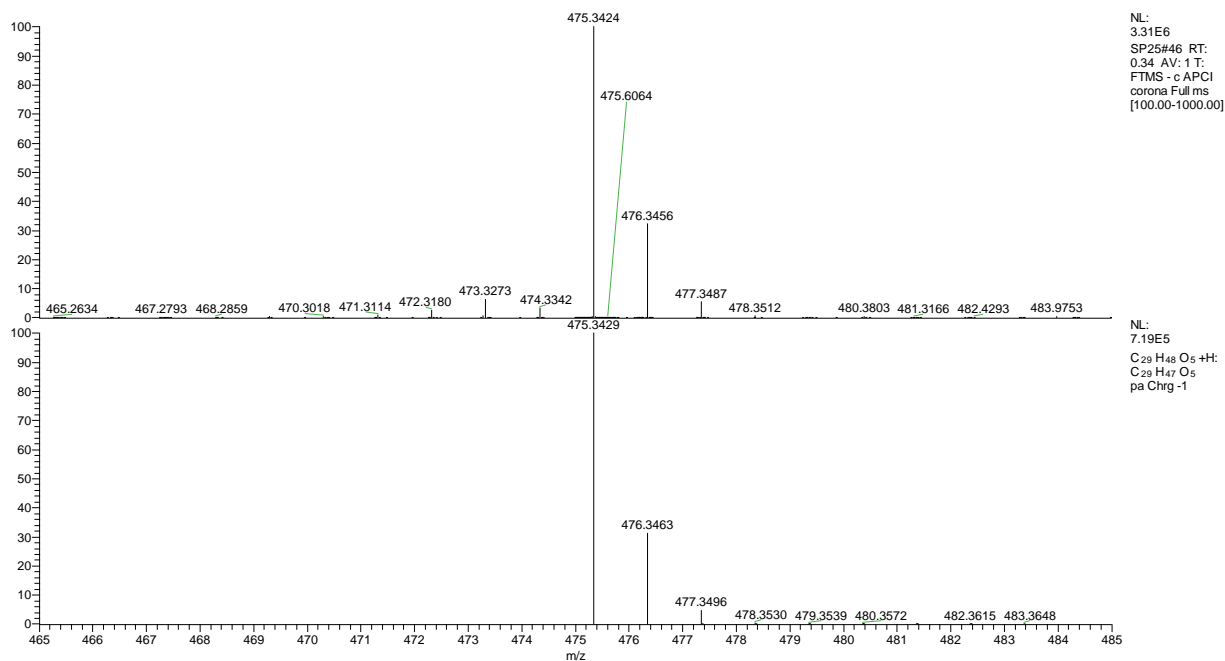


Figure S24. HR-APCIMS spectrum of (23*E*)-22 α ,28-epidioxy-4 α ,24-dimethyl-5 α -cholest-23-en-3 β ,8 β ,11 β -triol (**13**).

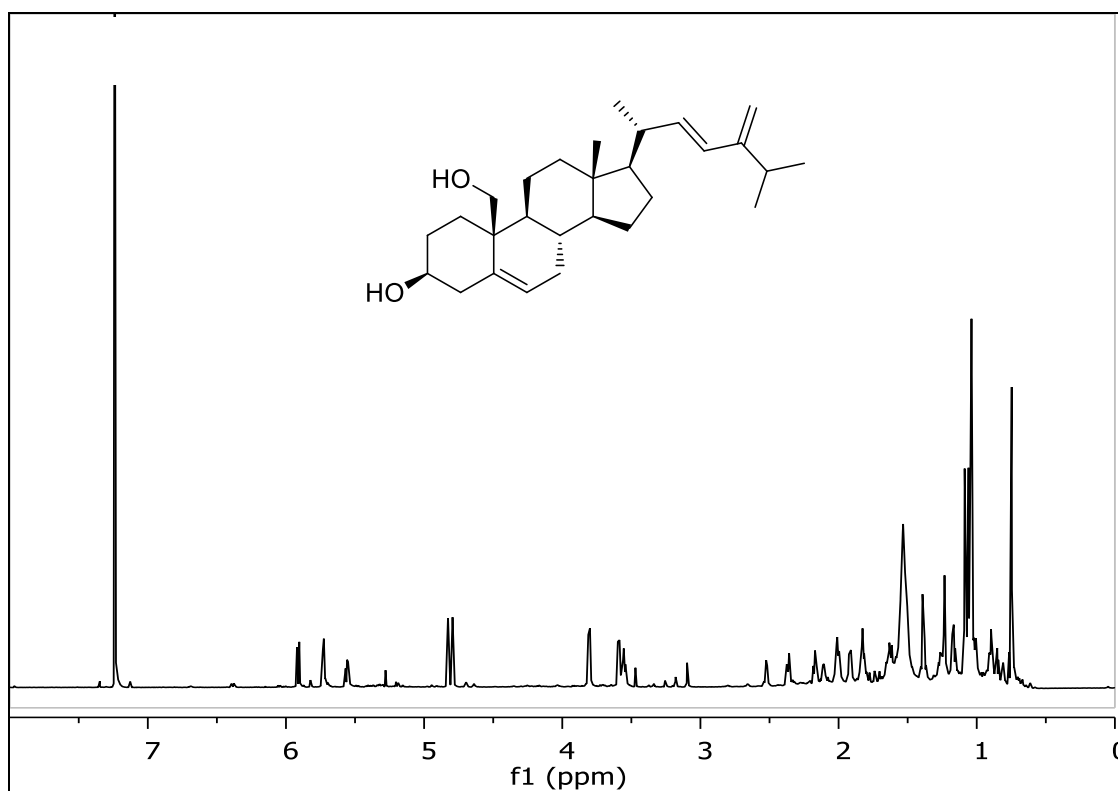


Figure S25. ^1H NMR spectrum of (22*E*)-24-methyl-cholesta-5,22,24(28)-trien-3 β ,19-diol (**20**) in CDCl_3 .

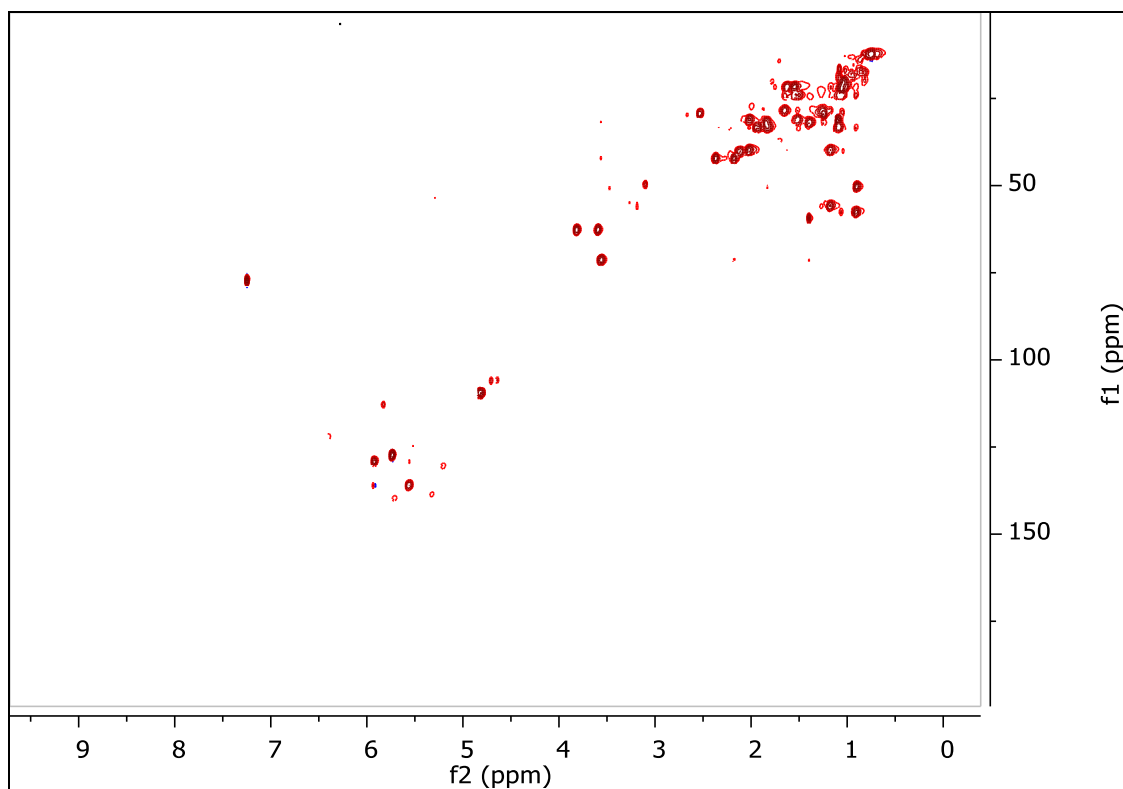


Figure S26. HSQC spectrum of (22*E*)-24-methyl-cholesta-5,22,24(28)-trien-3 β ,19-diol (**20**) in CDCl₃.

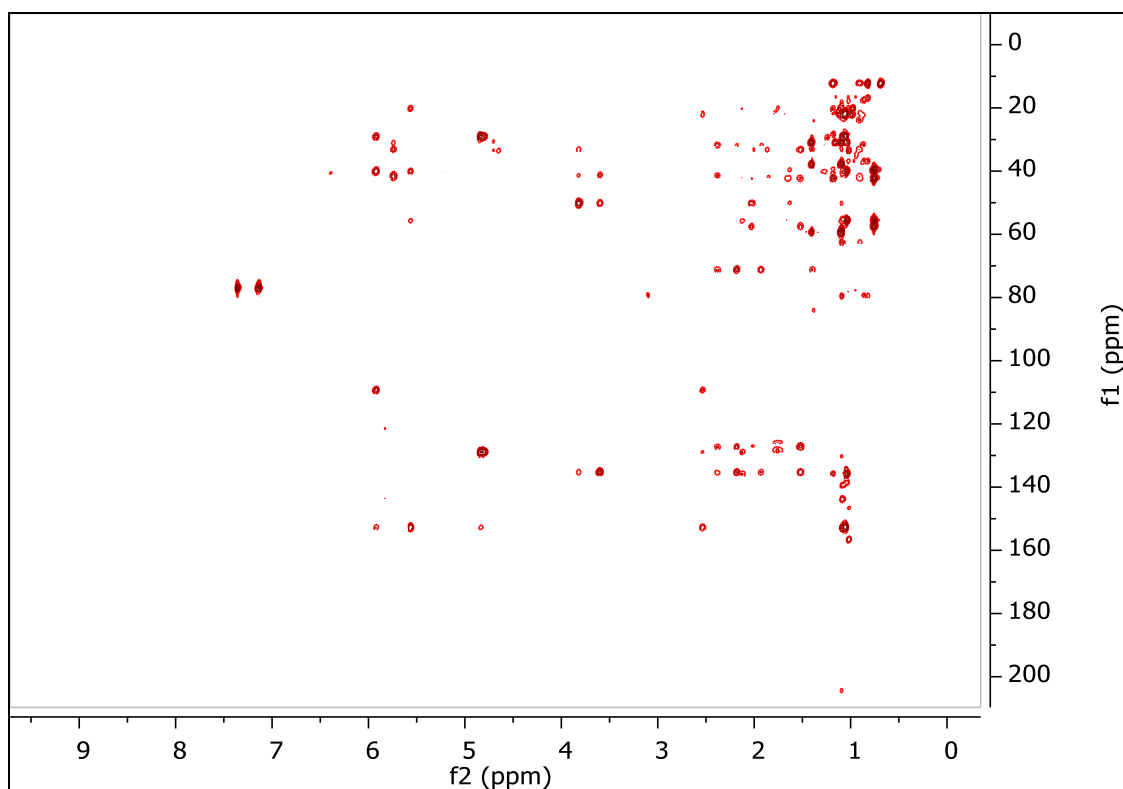


Figure S27. HMBC spectrum of (22*E*)-24-methyl-cholesta-5,22,24(28)-trien-3 β ,19-diol (**20**) in CDCl₃.

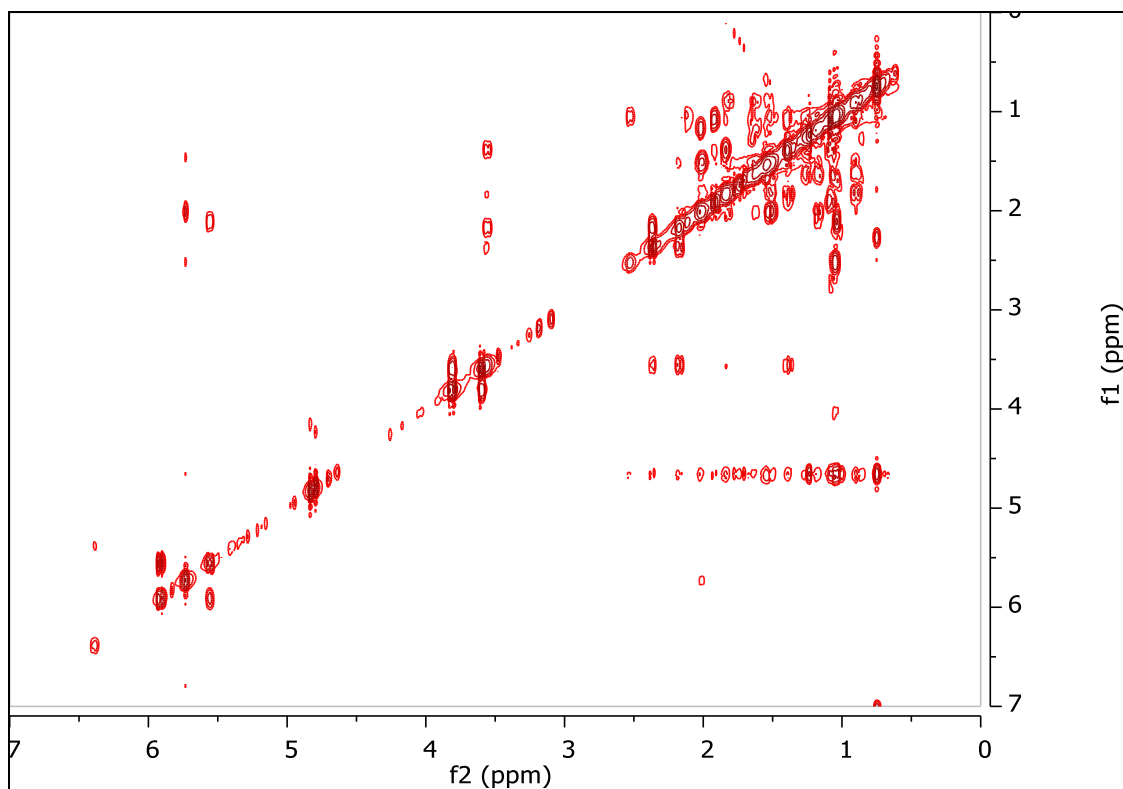


Figure S28. COSY spectrum of (22*E*)-24-methyl-cholesta-5,22,24(28)-trien-3 β ,19-diol (**20**) in CDCl₃.

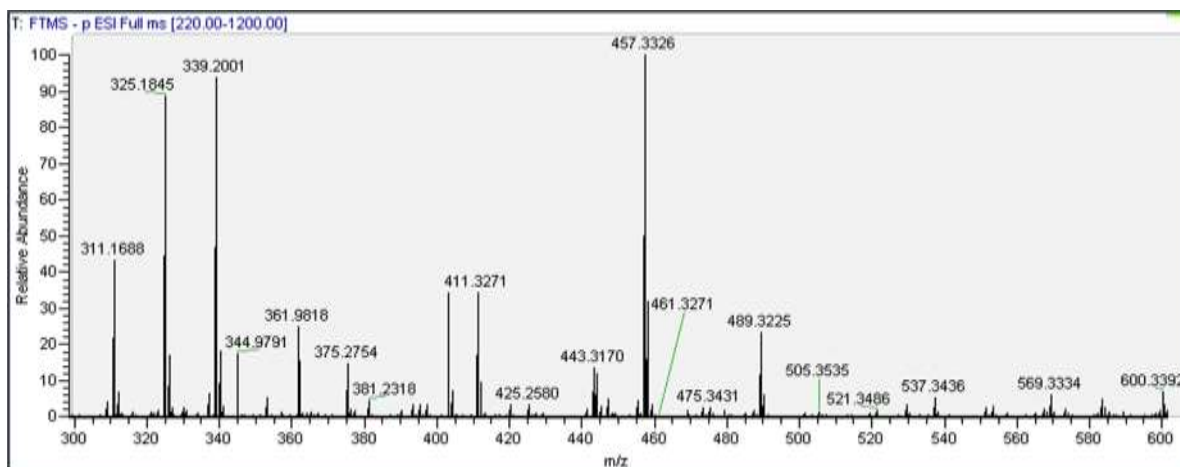


Figure S29. HR-ESIMS spectrum of (22*E*)-24-methyl-cholesta-5,22,24(28)-trien-3 β ,19-diol (**20**).