

Supplementary Information

For: Jakubec *et al.*, Small additions of bioactive marine sponge metabolites have unusual effects on lipid headgroup mobility and phase organization in membrane model systems

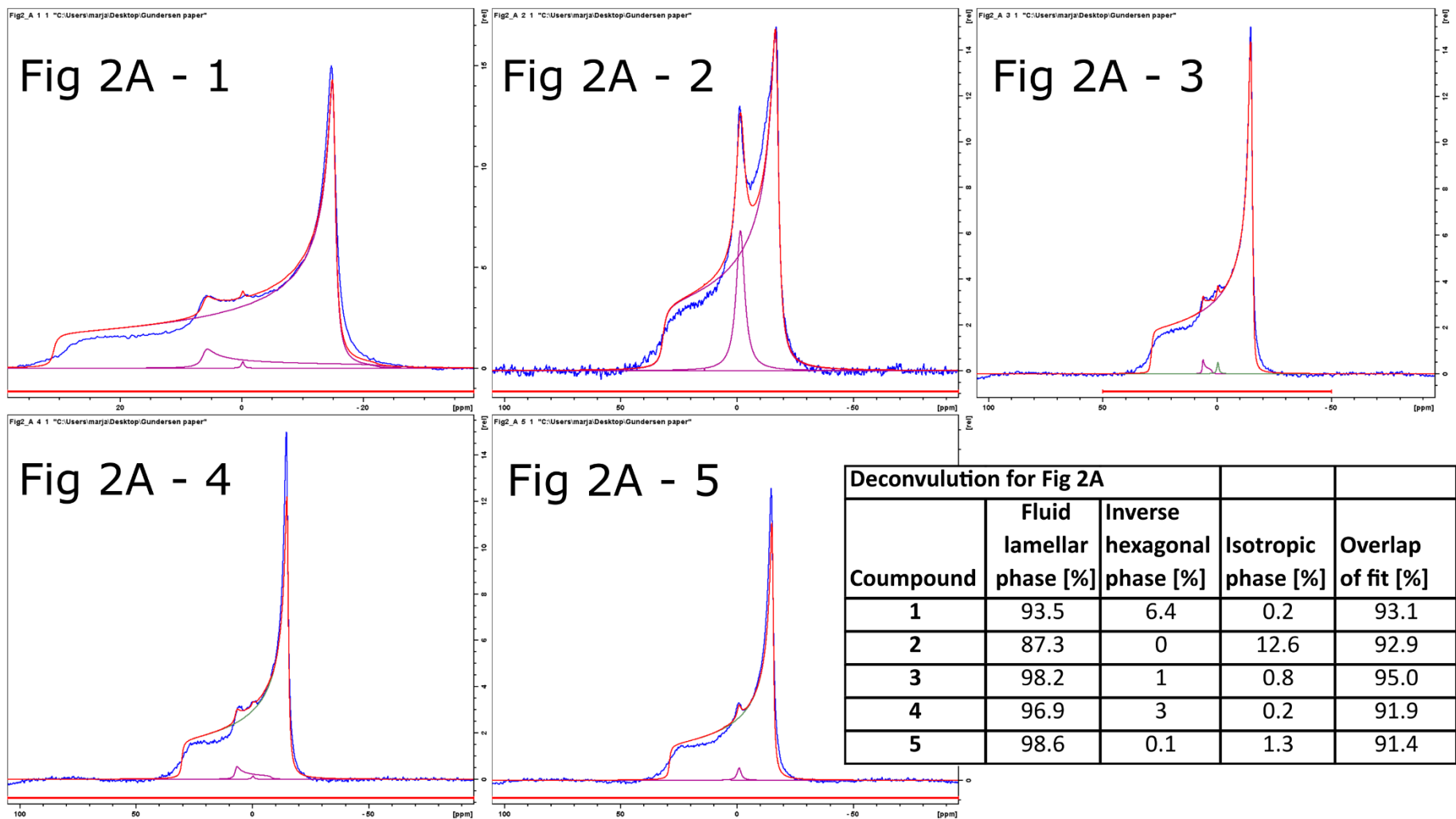


Fig. S1. Deconvoluted wide line ^{31}P NMR scans for Fig 3A.

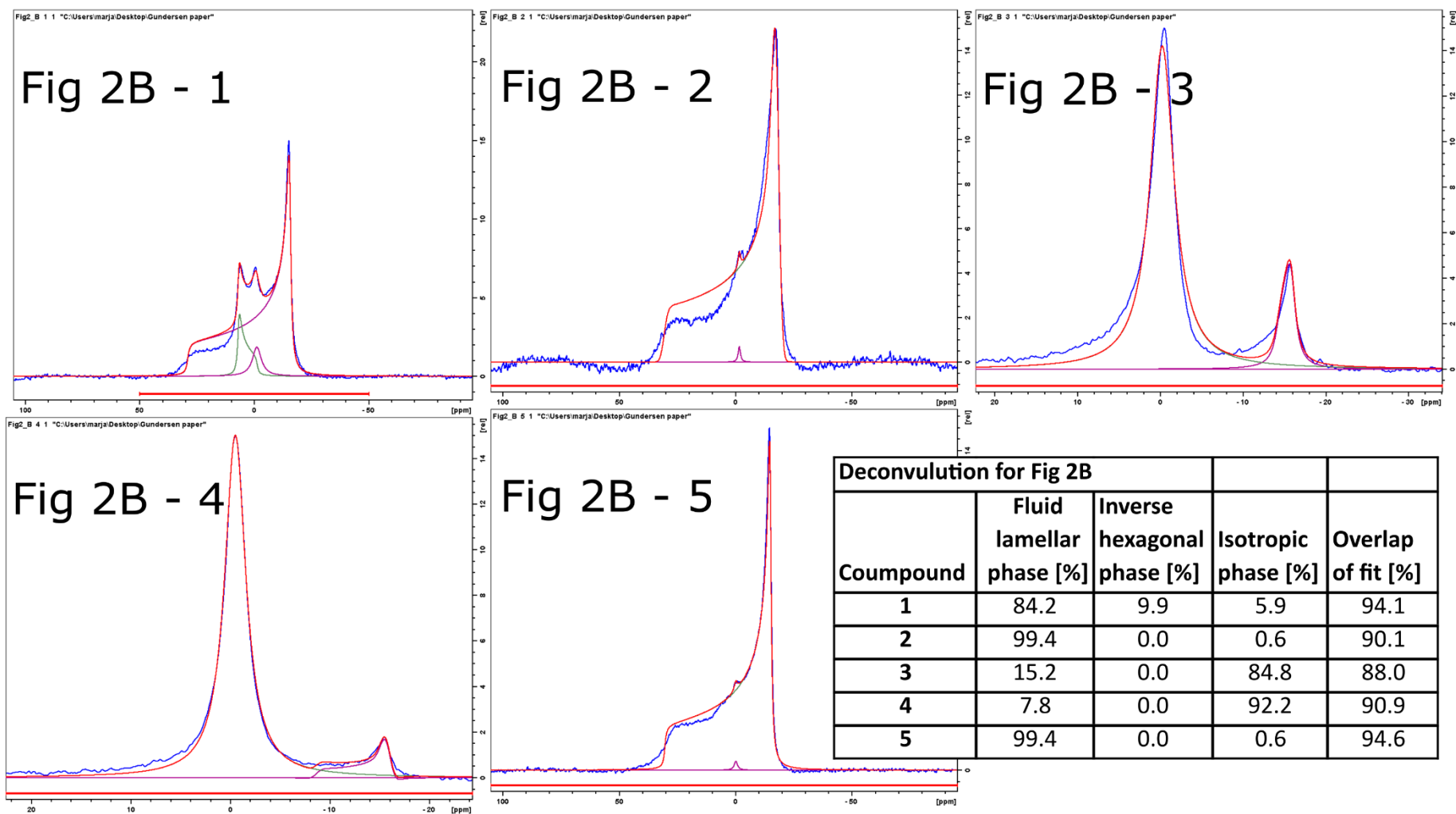


Fig. S2. Deconvoluted wide line ^{31}P NMR scans for Fig 3B.

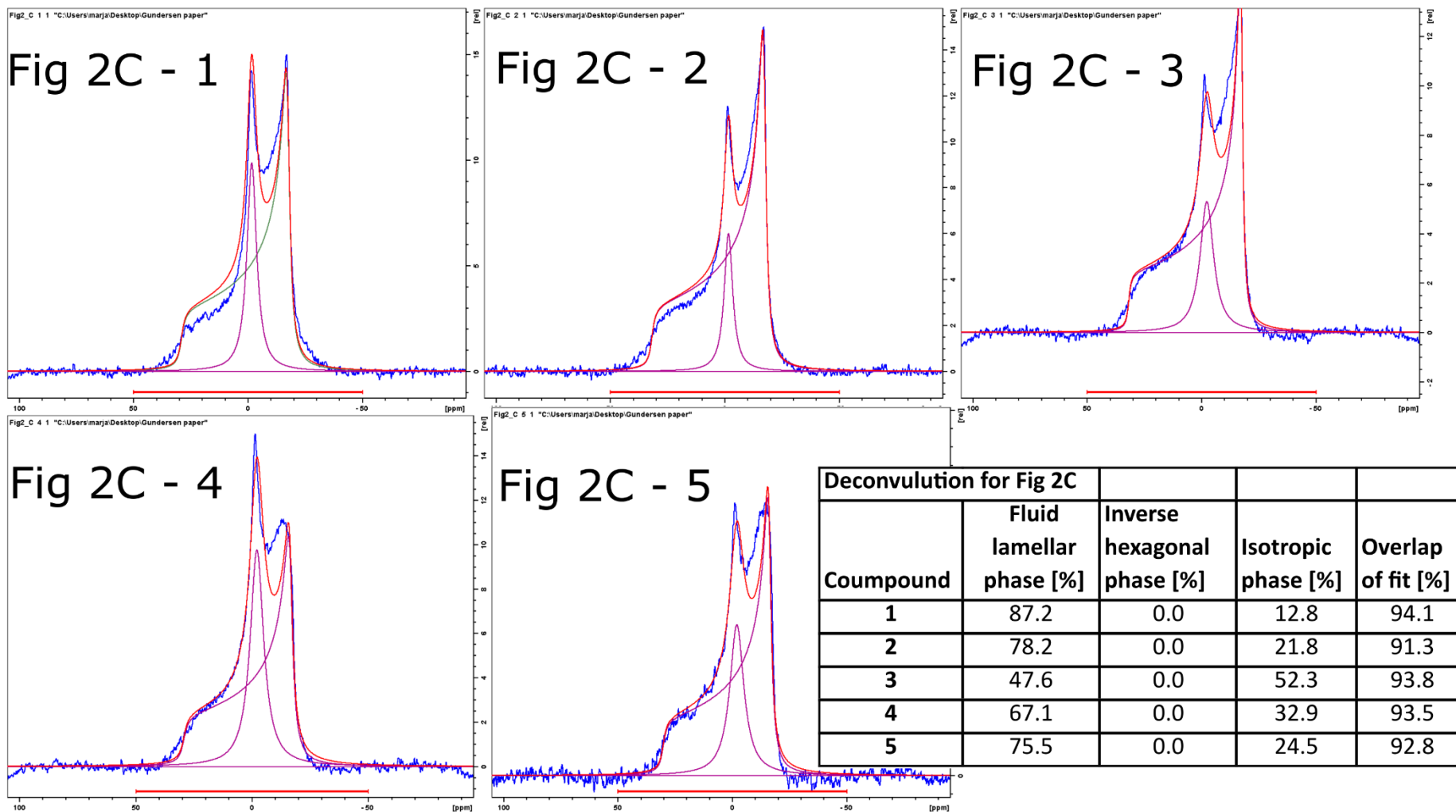


Fig. S3. Deconvoluted wide line ^{31}P NMR scans for Fig 3C.

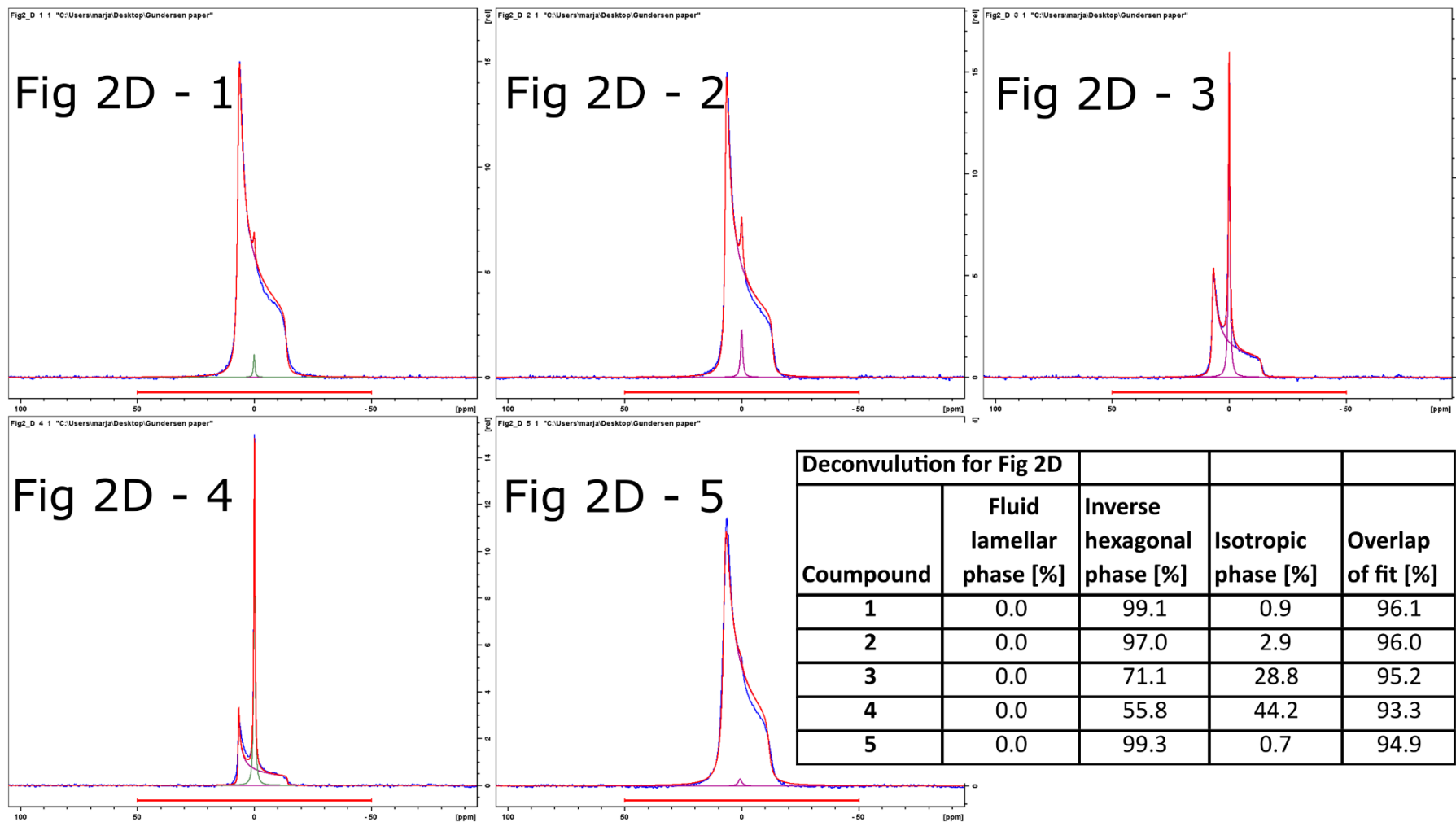


Fig. S4. Deconvoluted wide line ^{31}P NMR scans for Fig 3D.

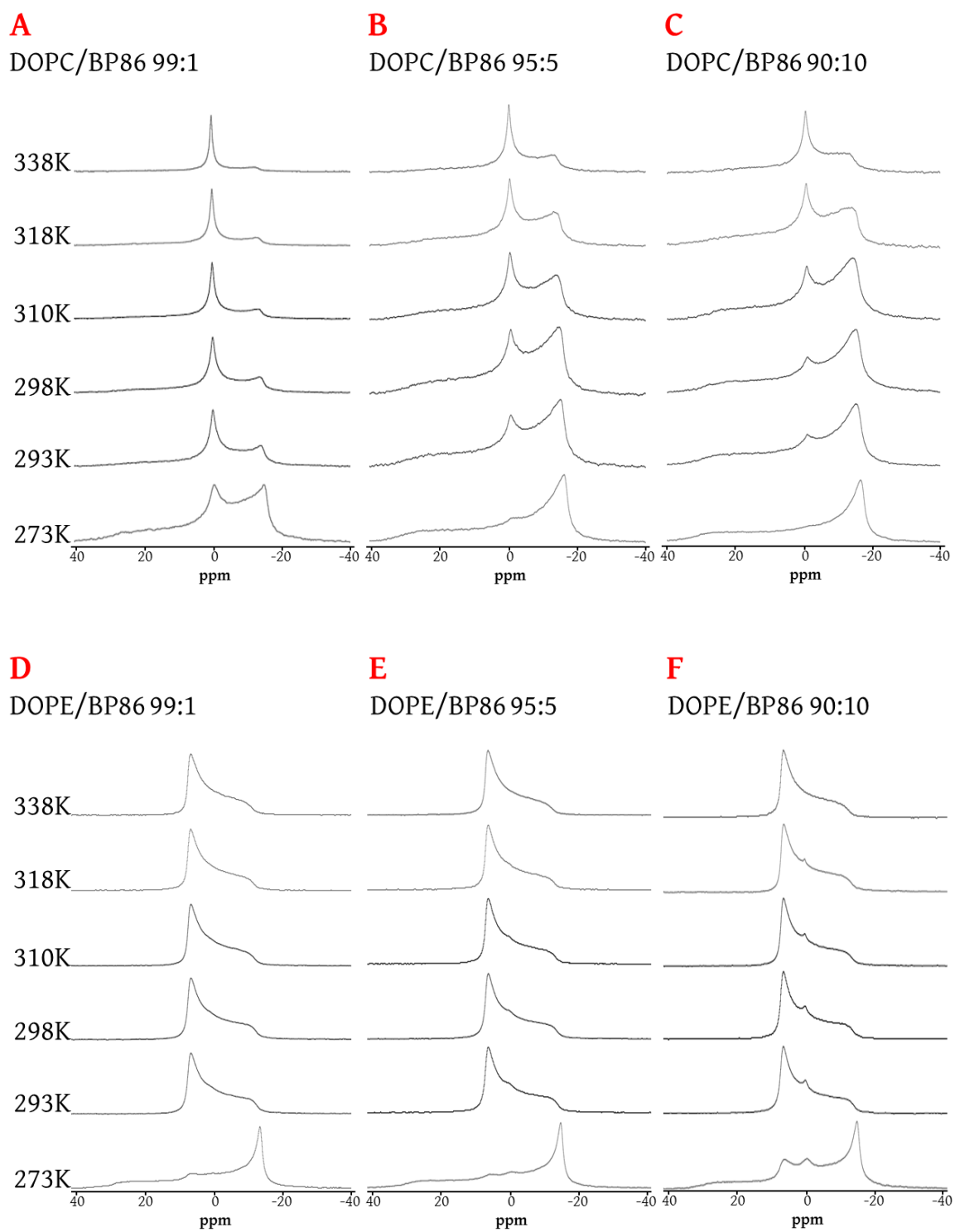


Fig. S5. Wide line ^{31}P NMR temperature scans of DOPC (Panels A-C) and DOPE (panels D-F) doped with compound **1** (BP86; 1-10%).

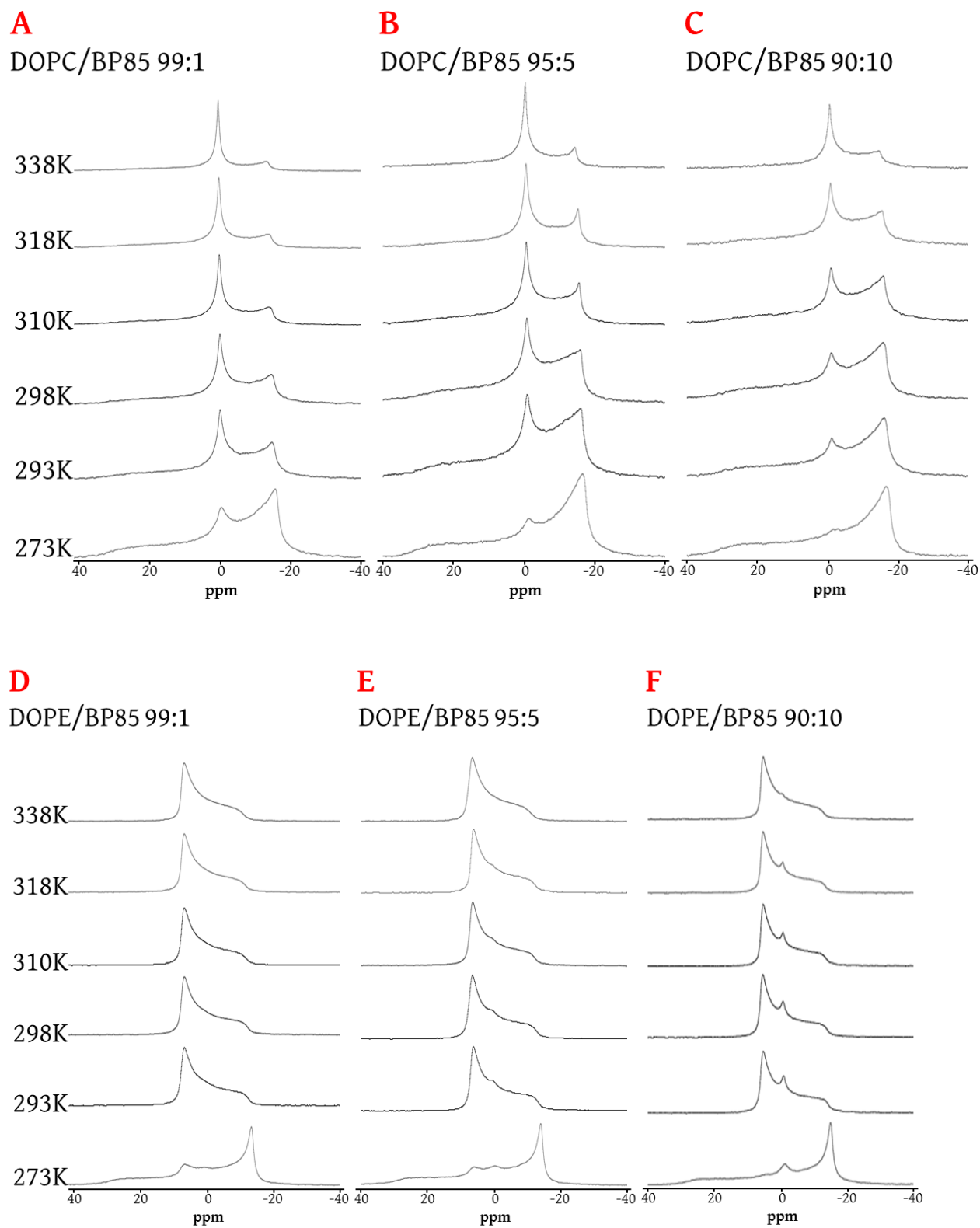


Fig. S6. Wide line ^{31}P NMR temperature scans of DOPC (Panels A-C) and DOPE (panels D-F) doped with compound **2** (BP085; 1-10%).

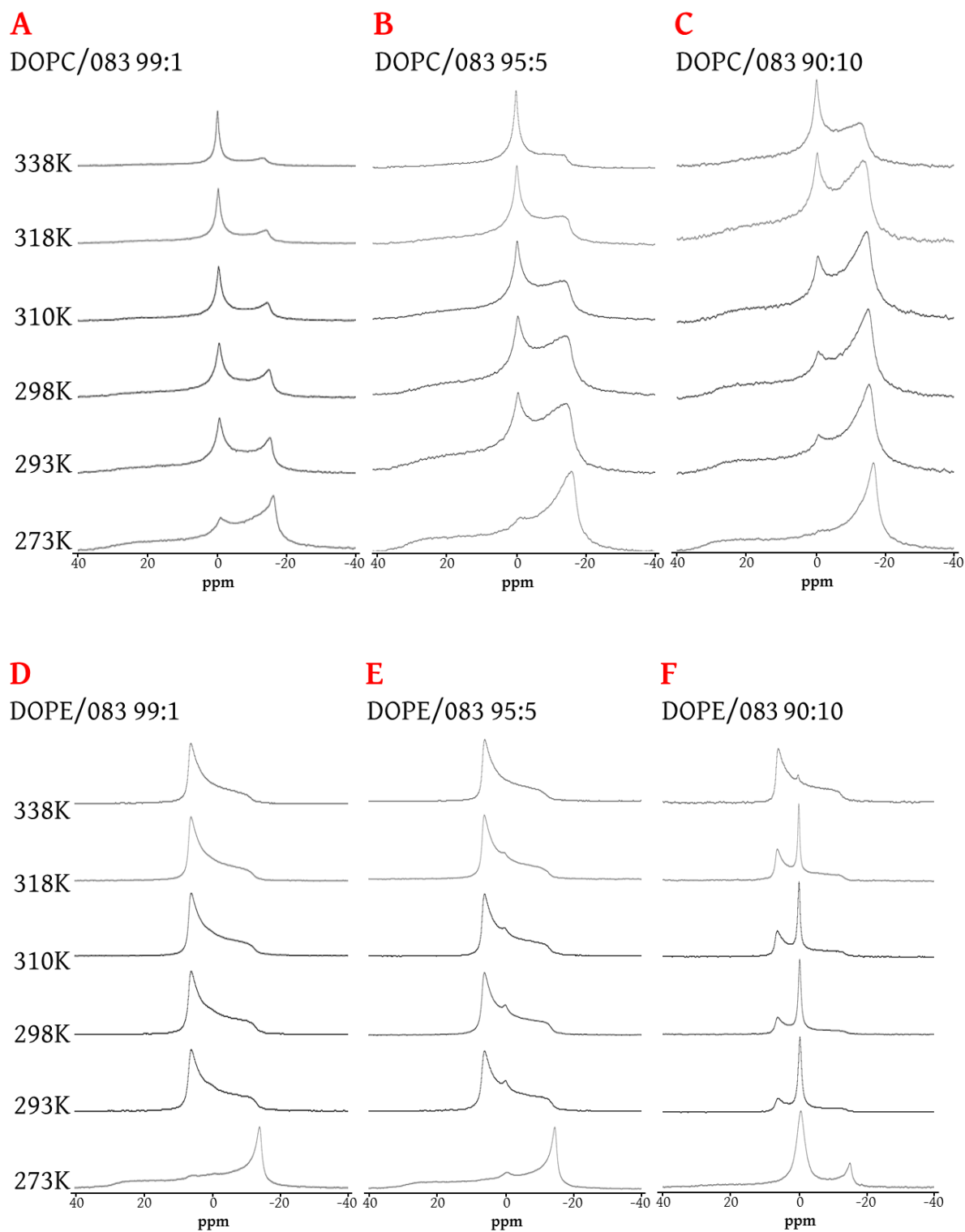


Fig. S7. Wide line ^{31}P NMR temperature scans of DOPC (Panels A-C) and DOPE (panels D-F) doped with compound **3** (083; 1-10%).

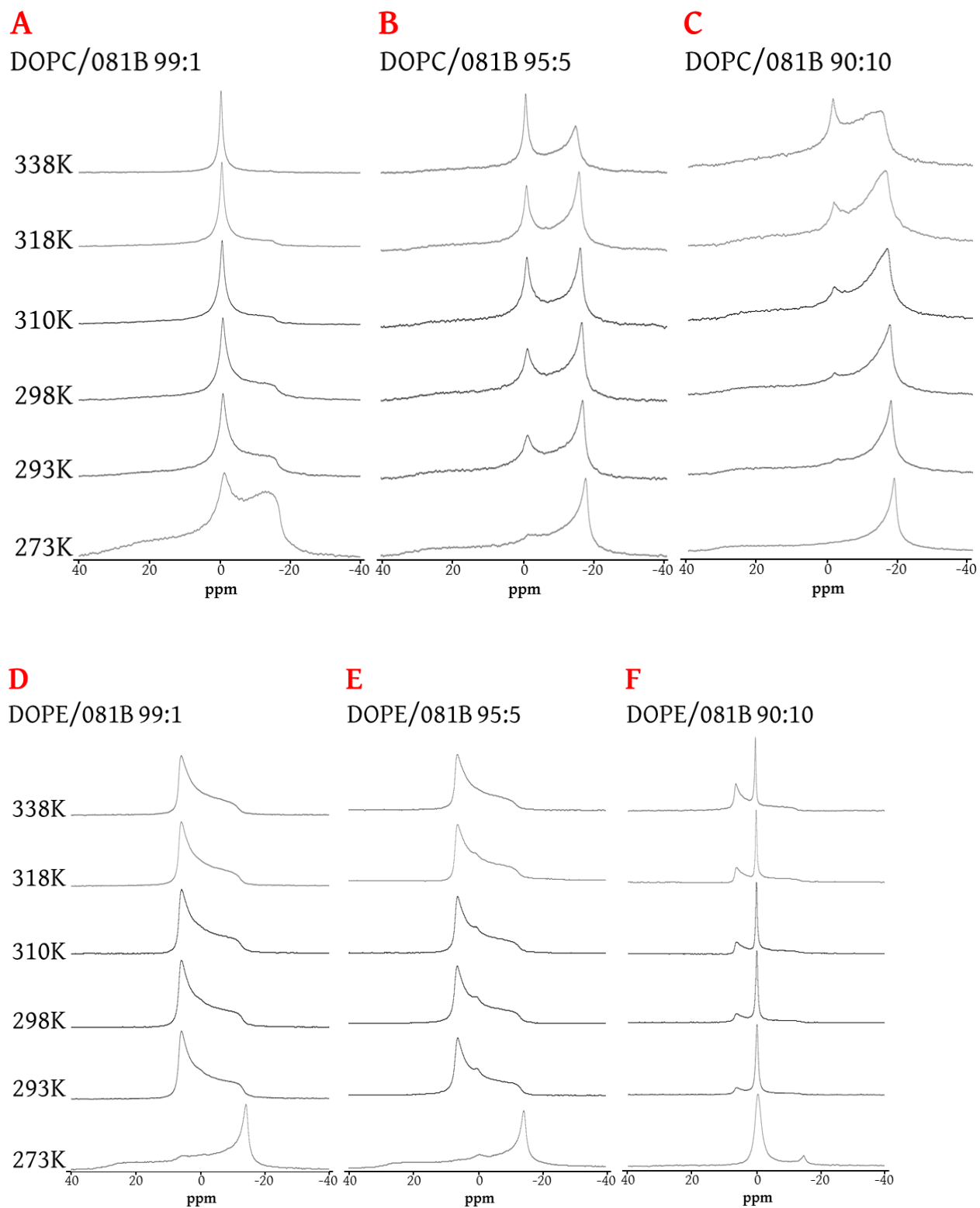


Fig. S8. Wide line ^{31}P NMR temperature scans of DOPC (Panels A-C) and DOPE (panels D-F) doped with compound **4** (081B; 1-10%).

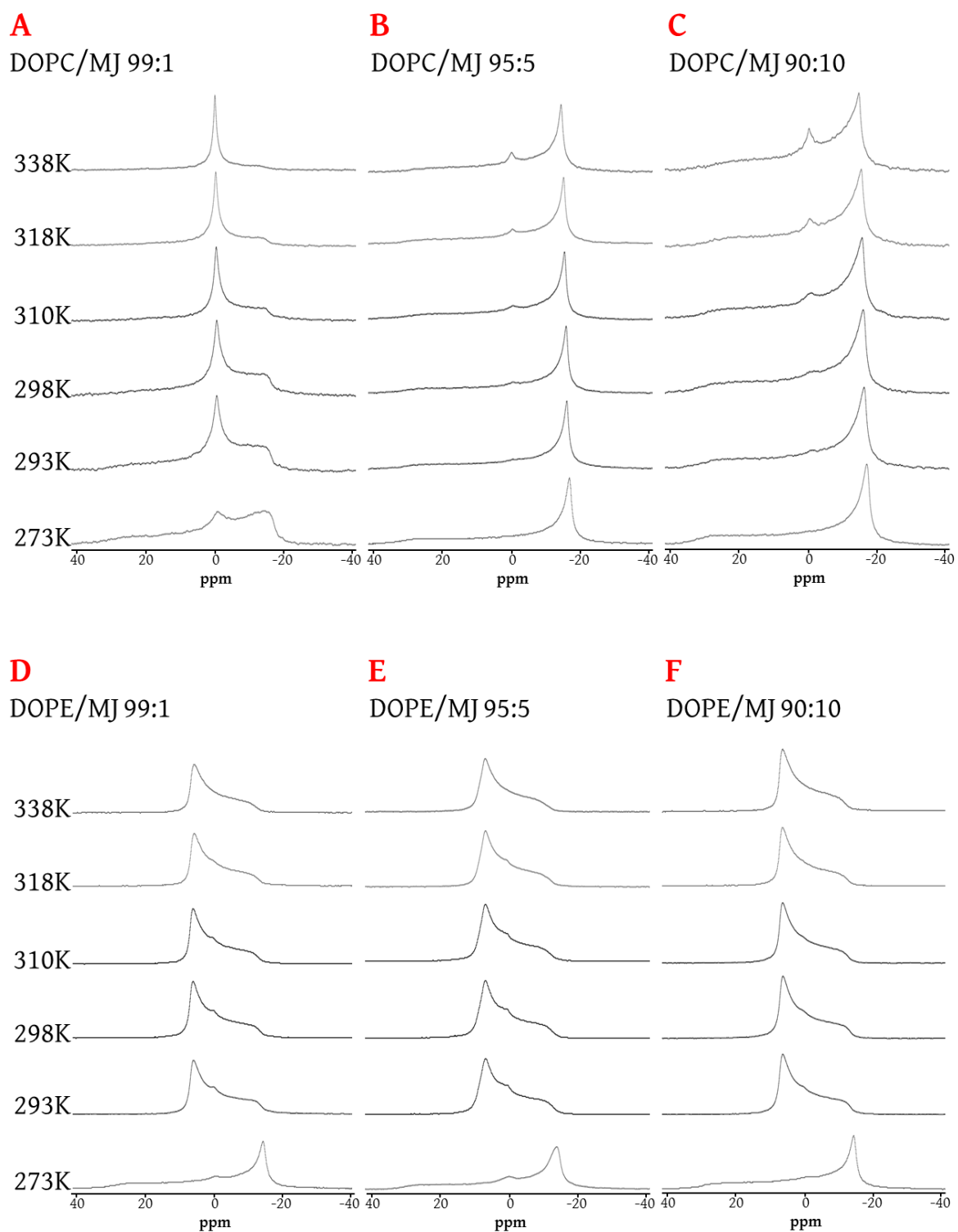


Fig. S9. Wide line ^{31}P NMR temperature scans of DOPC (Panels A-C) and DOPE (panels D-F) doped with compound **5** (MJ; 1-10%).