

Supplementary Information

A New Citrinin Derivative from the Indonesian Marine Sponge-Associated Fungus *Penicillium citrinum*

Aninditia Sabdaningsih^{1,2,3,5,6,*}, Yang Liu^{3,4,*}, Ute Mettal^{3,4}, John Heep⁴, Riyanti^{3,4,10}, Lei Wang^{3,4}, Olvi Cristianawati^{1,5,6}, Handung Nuryadi^{5,7}, Mada Triandala Sibero^{5,6,9}, Michael Marner⁴, Ocky Karna Radjasa^{5,8,9}, Agus Sabdono^{5,9}, Agus Trianto^{6,9} and Till F. Schäberle^{3,4,11,*}

- ¹ Department of Coastal Resources Management, Faculty of Fisheries and Marine Sciences, Diponegoro University, 50275 Semarang, Indonesia; olvi.cristiana@yahoo.com (O.C);
- ² Department of Aquatic Resources, Faculty of Fisheries and Marine Sciences, Diponegoro University, 50275 Semarang, Indonesia
- ³ Institute for Insect Biotechnology, Justus-Liebig-University of Giessen, 35392 Giessen, Germany; Ute.Mettal@chemie.uni-giessen.de (U.M.); riyanti@bio.uni-giessen.de (R.); Lei.Wang@agrار.uni-giessen.de (L.W.); till.f.schaerberle@agrار.uni-giessen.de (T.F.S.)
- ⁴ Department of Bioresources of the Fraunhofer Institute for Molecular Biology and Applied Ecology (IME), 35392 Giessen, Germany; John.Heep@ime.fraunhofer.de (J.H.); Michael.Marner@ime.fraunhofer.de (M.M.)
- ⁵ Tropical Marine Biotechnology Laboratory, Diponegoro University, Semarang 50275, Indonesia; handung.nuryadi87@gmail.com (H.N.); madatriandala@hotmail.com (M.T.S); ocky_radjasa@yahoo.com (O.K.R.); agus_sabdono@yahoo.com (A.S.);
- ⁶ Marine Natural Product Laboratory, Diponegoro University, 50275 Semarang, Indonesia; agustrianto.undip@gmail.com (A.T.)
- ⁷ Graduate School of Engineering and Science, University of the Ryukyus, 1 Senbaru, Niihara, 903-0213 Okinawa, Japan; handung.nuryadi87@gmail.com (H.N.)
- ⁸ Ministry of Research and Technology of the Republic of Indonesia, 10340 Jakarta, Indonesia; ocky_radjasa@yahoo.com (O.K.R.)
- ⁹ Department of Marine Sciences, Faculty of Fisheries and Marine Sciences, Diponegoro University, 50275 Semarang, Indonesia; madatriandala@hotmail.com (M.T.S)
- ¹⁰ Faculty of Fisheries and Marine Science, Jenderal Soedirman University, 53122 Purwokerto, Indonesia; riyanti.anti@gmail.com (R.)
- ¹¹ German Center for Infection Research (DZIF), Partner Site Giessen-Marburg-Langen, Giessen, Germany
- * Correspondence: aninditiasabdaningsih@live.undip.ac.id (A.S.); Liu.Yang@agrار.uni-giessen.de (Y.L.); till.f.schaerberle@agrار.uni-giessen.de (T.F.S.); Tel.: +49-641-99-37140 (T.F.S)

Contents

Figure S1. ^1H NMR spectrum of compound 1 (600 MHz, CD_3OD)	3
Figure S1.1 Expanded ^1H NMR spectrum of compound 1 (600 MHz, CD_3OD)	4
Figure S2. ^{13}C NMR spectrum of compound 1 (150 MHz, CD_3OD)	5
Figure S3. COSY spectrum of compound 1	6
Figure S4. HSQC spectrum of compound 1	7
Figure S5. HMBC spectrum of compound 1	8
Figure S6. NOESY spectrum of compound 1	9
Figure S7. LC-HRESIMS of compound 1	10
Figure S8 phylogenetic tree of fungus <i>Penicillium citrinum</i>	11

Figure S1 ^1H NMR spectrum of compound **1** (600MHz, CD_3OD)

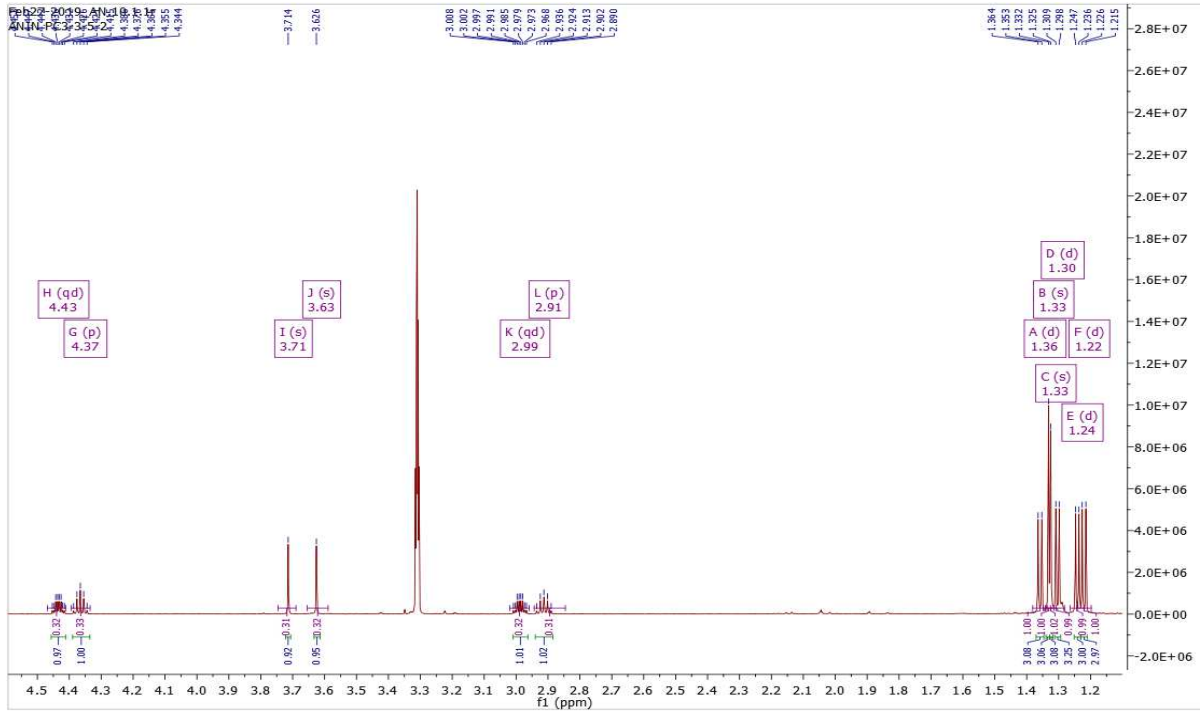


Figure S1.1 Expanded ^1H NMR spectrum of compound **1** (600 MHz, CD_3OD)

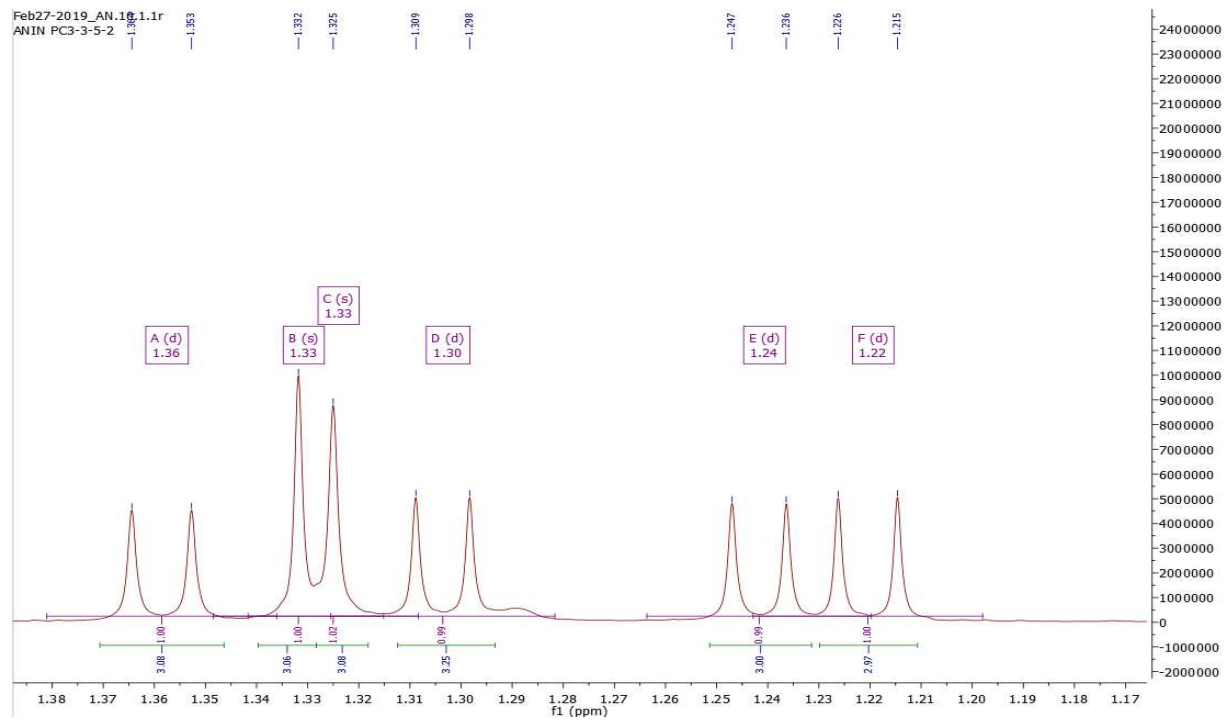
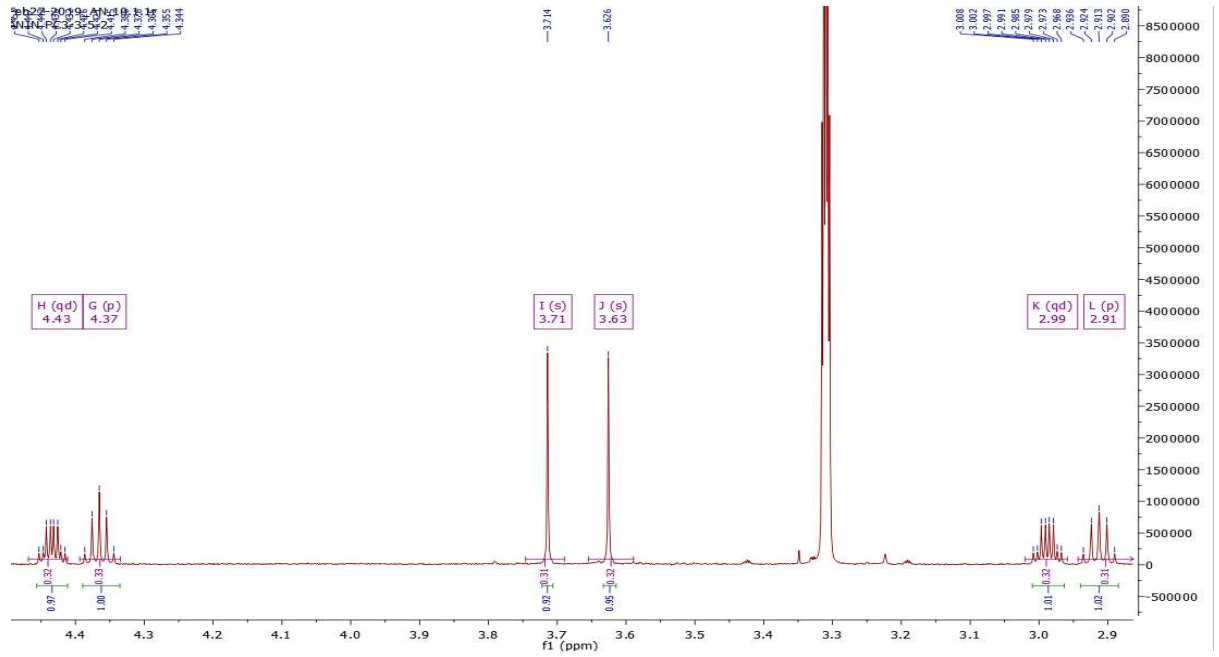


Figure S2 ^{13}C NMR spectrum of compound **1** (150MHz, CD_3OD)

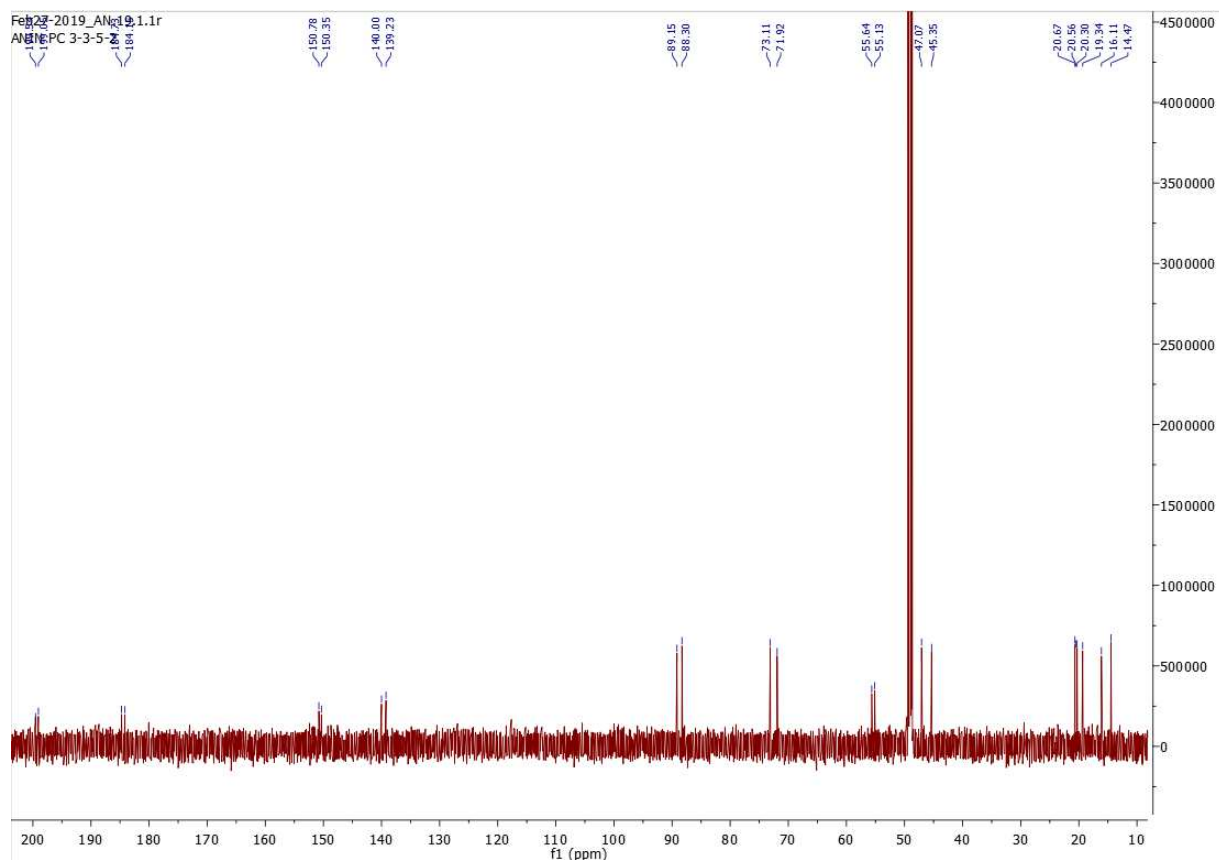


Figure S3. COSY spectrum of compound 1

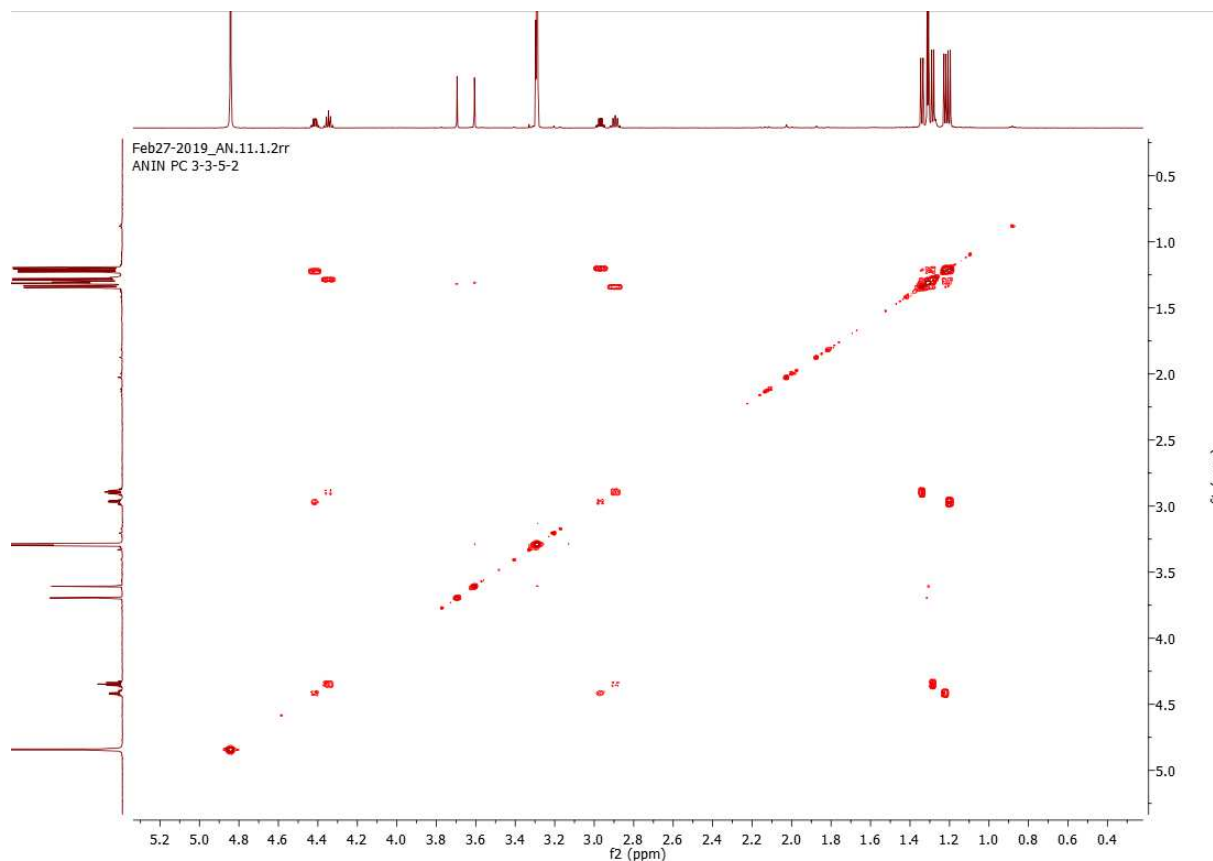


Figure S4. HSQC spectrum of compound 1

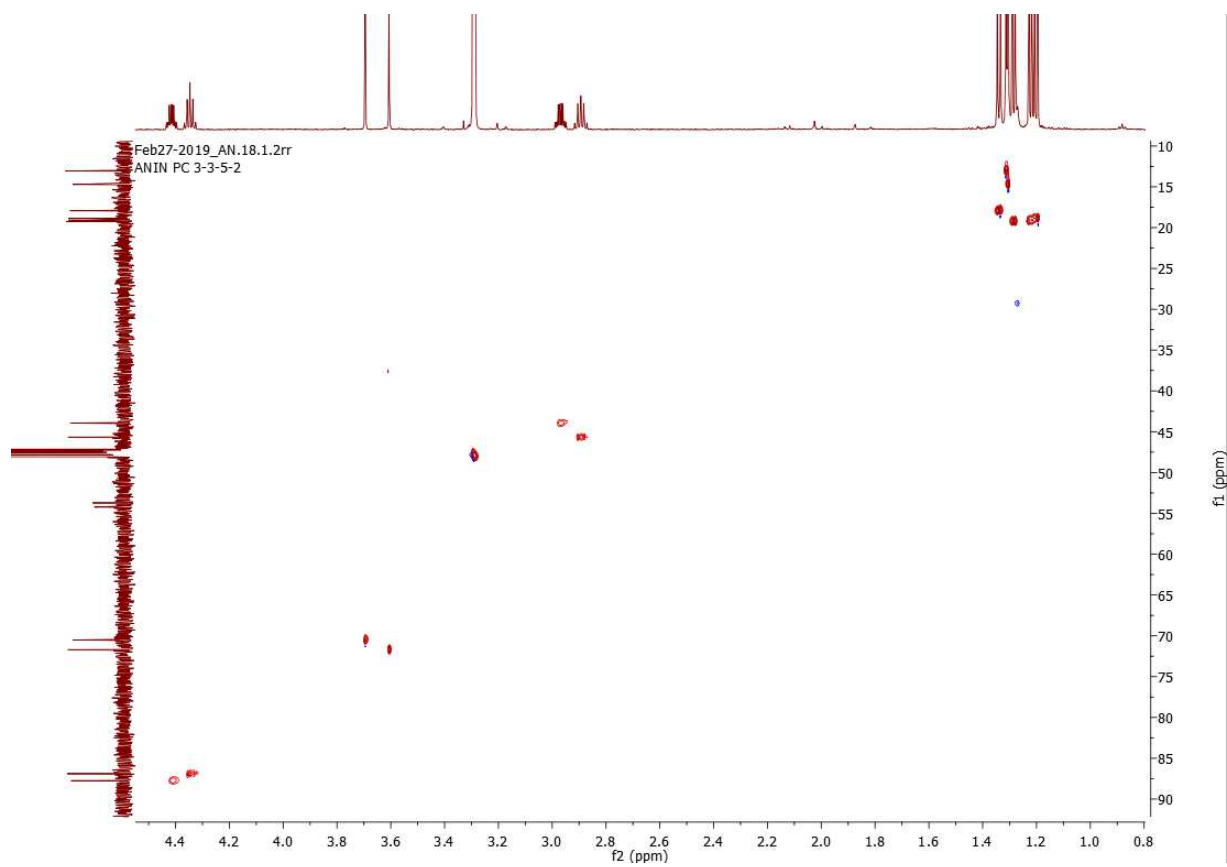


Figure S5. HMBC spectrum of compound **1**

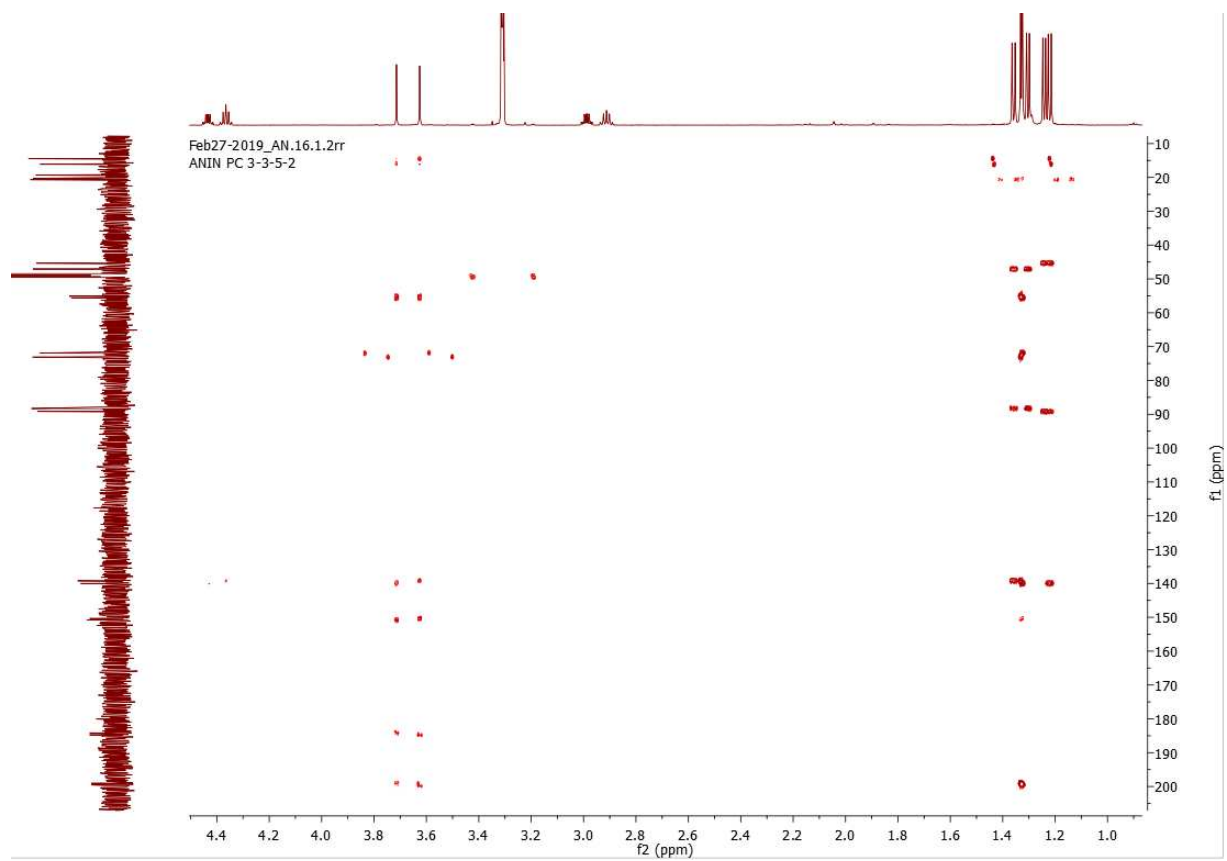


Figure S6. NOESY spectrum of compound **1**

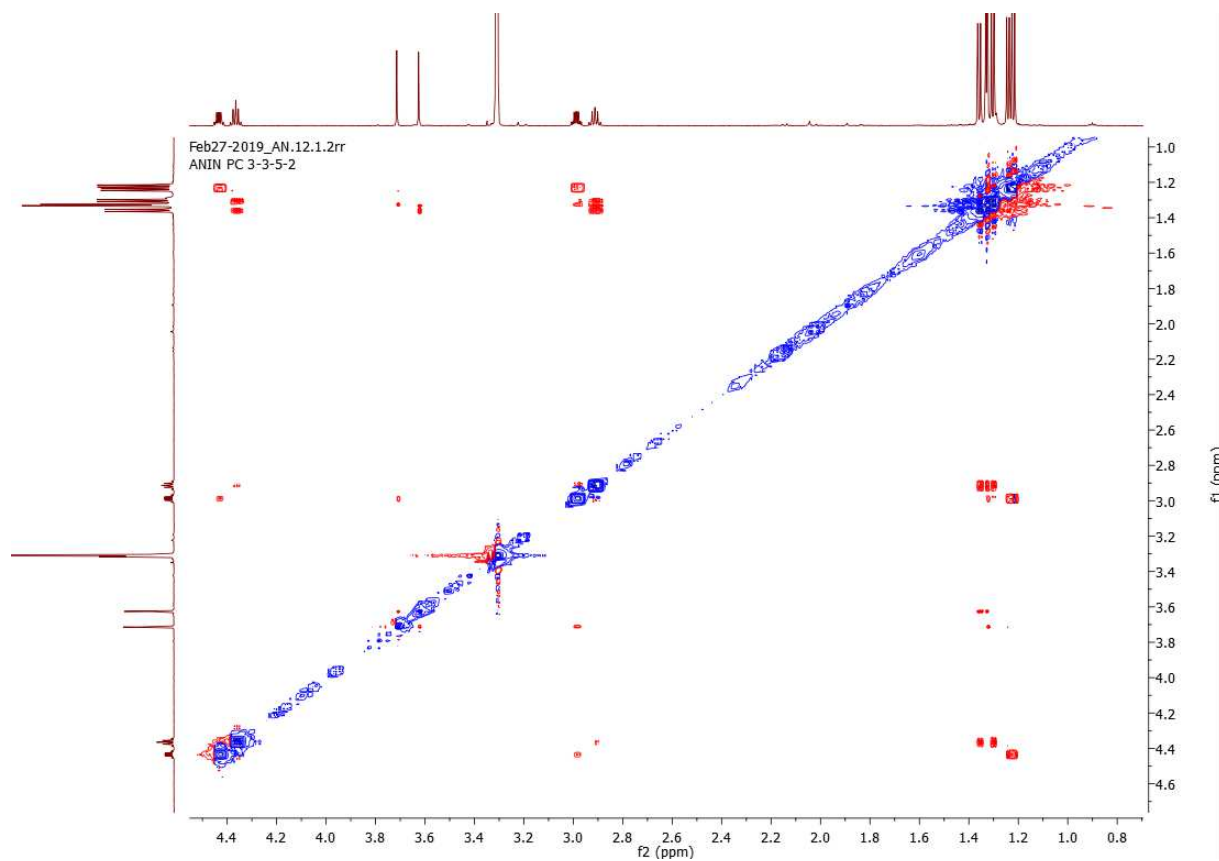
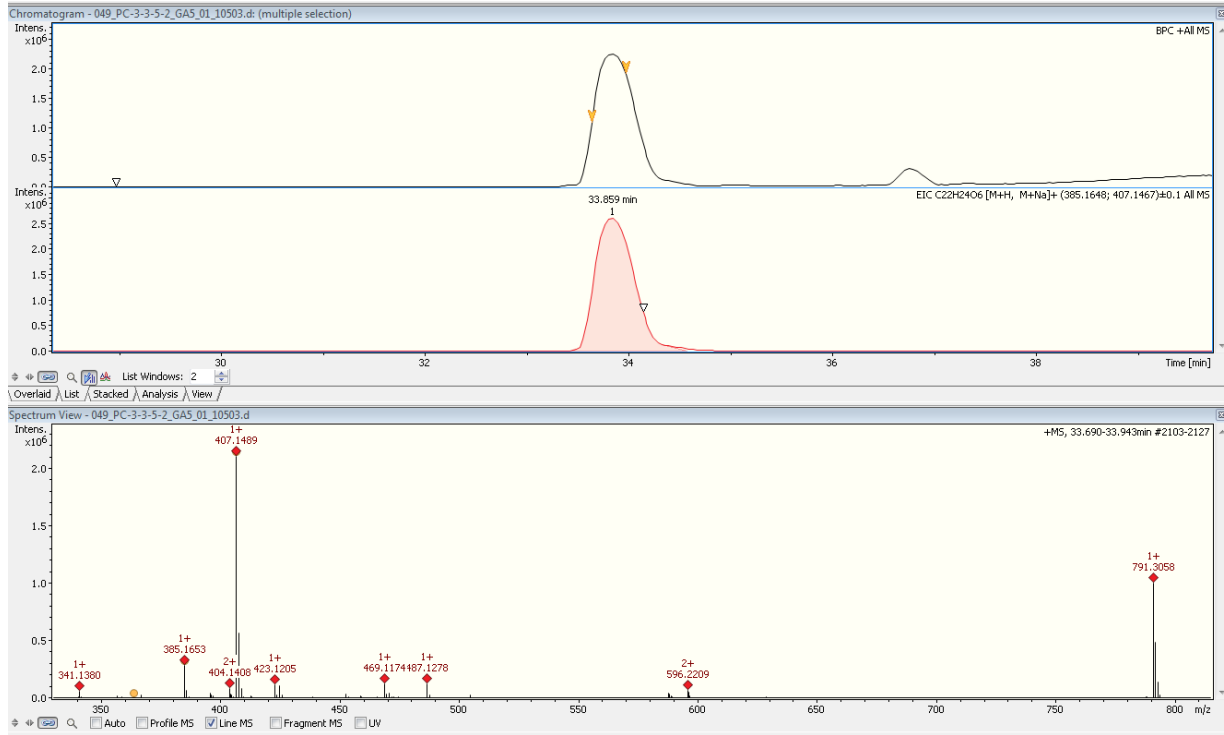


Figure S7. LC-HRESIMS of compound 1



Meas. m/z	#	Ion Formula	m/z	err [ppm]	mSigma	# mSigma	Score	rd
385.1653	1	C22H25O6	385.1646	-1.9	4.7	1	100.00	10.
385.1653	2	C19H17N1O	385.1632	-5.4	10.1	2	38.07	16.
385.1653	3	C23H21N4O2	385.1659	1.6	10.4	3	94.82	15.
385.1653	4	C18H21N6O4	385.1619	-8.8	18.7	4	9.46	11.

Meas. m/z	#	Ion Formula	m/z	err [ppm]	mSigma	# mSigma	Score
407.1489	1	C23H20N4NaO2	407.1478	-2.5	3.6	1	100.00
407.1489	2	C22H24NaO6	407.1465	-5.8	16.5	2	30.60
407.1489	3	C19H16N10Na	407.1452	-9.1	17.7	3	7.97
407.1489	4	C28H20N2Na	407.1519	7.3	23.8	4	15.03

Figure S8 phylogenetic tree of fungus *Penicillium citrinum*

A Maximum likelihood phylogenetic tree based on Internal Transcribed Spacer (ITS) region, the number of bootstrap replications 1000 was used to construct phylogenetic tree. The sponge-associated fungi was presented in red letters.

