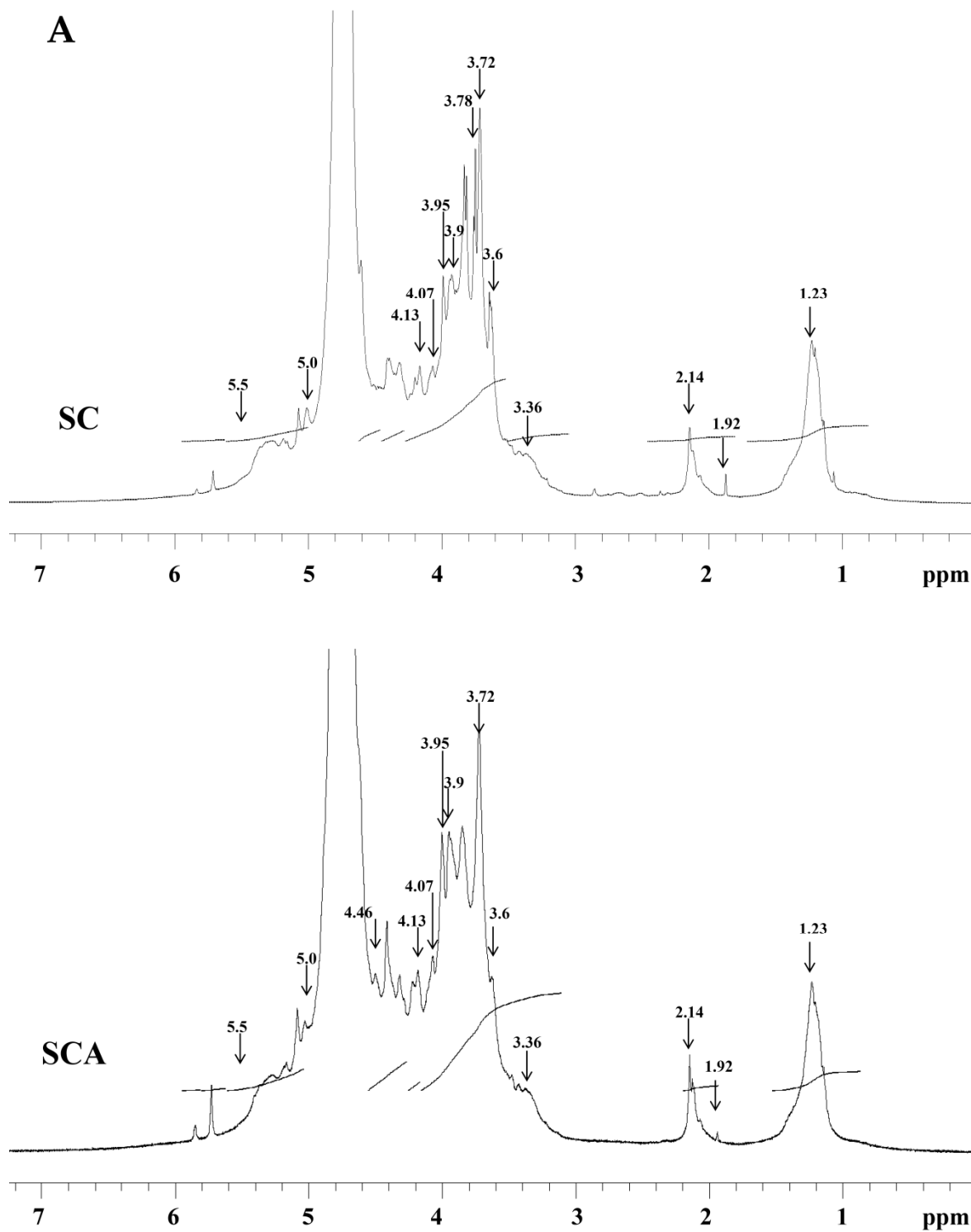
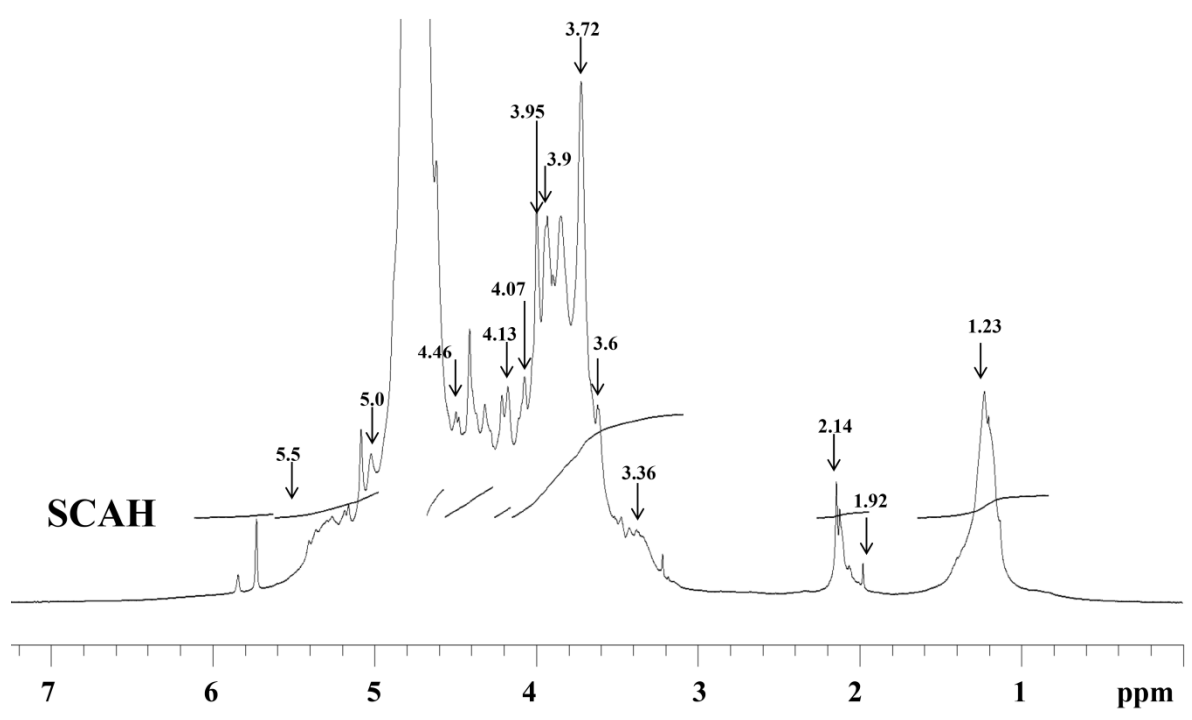
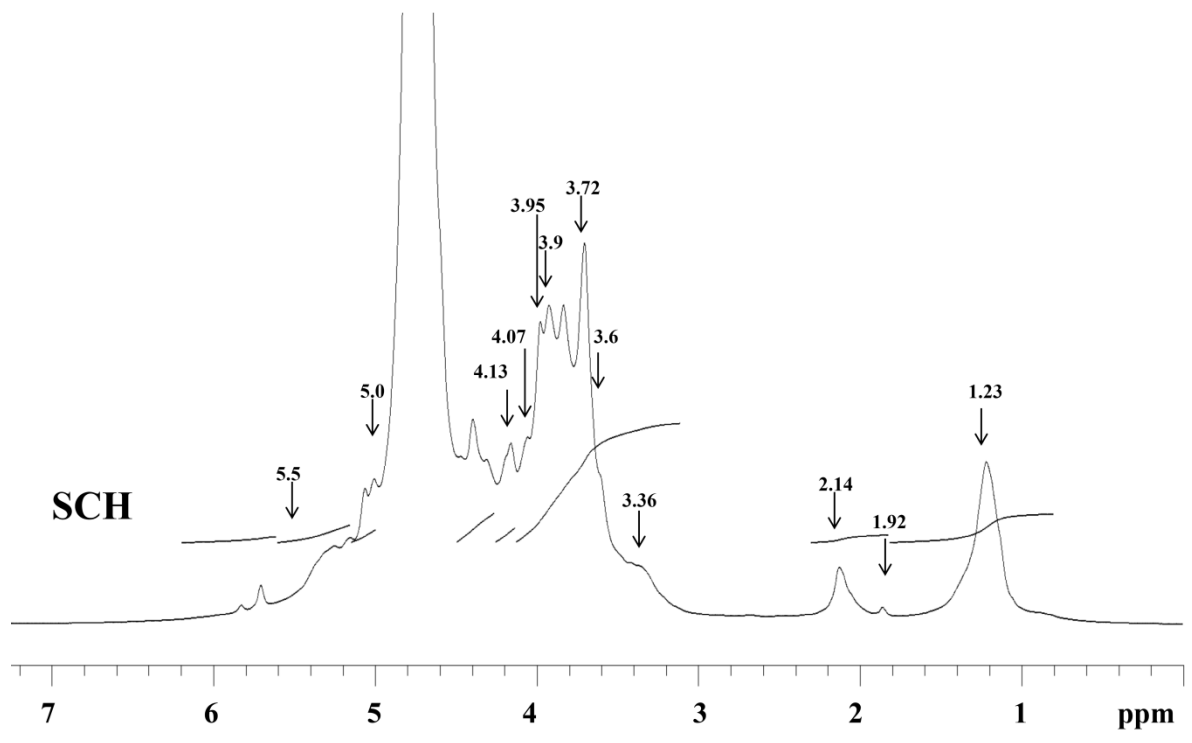


Supplementary Information

Figure S1. NMR analyses of SC, SCA, SCH, and SCAH. (A) ^1H -NMR spectra for SC, SCA, SCH, and SCAH. (B) ^{13}C -NMR spectra for SC, SCA, SCH, and SCAH. The characteristic peaks are indicated in each graph.

Figure S1. NMR analyses of SC, SCA, SCH, and SCAH. (A) ^1H -NMR spectra for SC, SCA, SCH, and SCAH. (B) ^{13}C -NMR spectra for SC, SCA, SCH, and SCAH. The characteristic peaks are indicated in each graph.





B

