

Supplementary Information

Elemental Composition and Cell Mass Quantification of Cultured Thraustochytrids Unveil their Large Contribution to Marine Carbon Pool

Biswarup Sen ¹, Jiaqian Li ¹, Lyu Lu ¹, Mohan Bai ¹, Yaodong He ¹ and Guangyi Wang ^{1,2,3,*}

¹ Center for Marine Environmental Ecology, School of Environmental Science and Engineering, Tianjin University, Tianjin 300072, China; bsen@tju.edu.cn (B.S.); lijiaqian@tju.edu.cn (J.L.); lvluu@tju.edu.cn (L.L.); bmh@zju.edu.cn (M.B.); yaodong.he@tju.edu.cn (Y.H.); gywang@tju.edu.cn (G.W.)

² Key Laboratory of Systems Bioengineering (Ministry of Education), Tianjin University, Tianjin 300072, China

³ Qingdao Institute Ocean Engineering, Tianjin University, Qingdao 266237, China

* Correspondence: gywang@tju.edu.cn; Tel: (86) 022-8740210

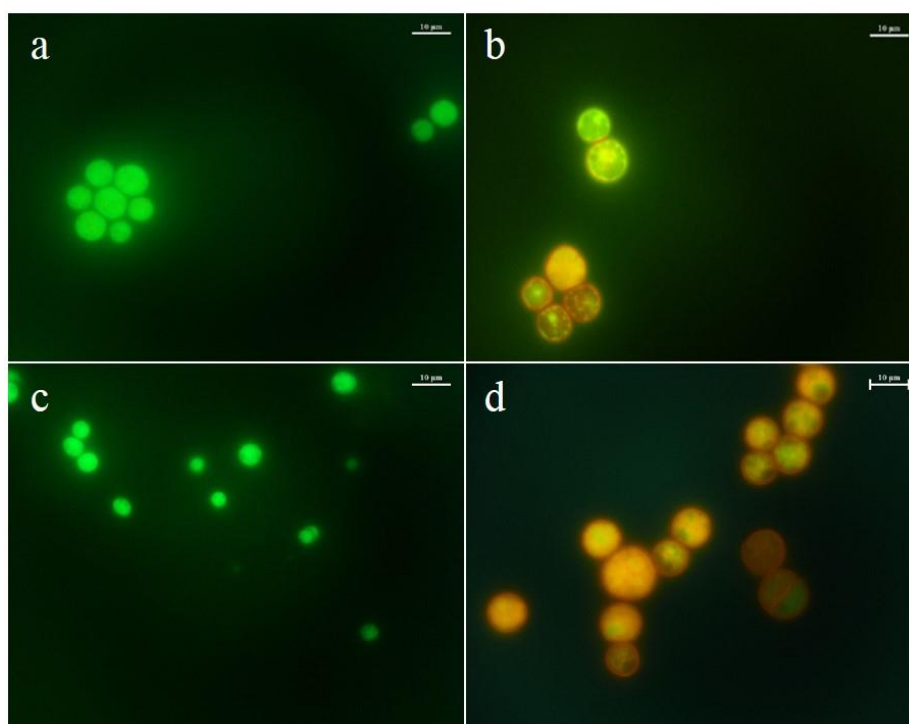


Figure S1: Micrographs of acriflavine-stained thraustochytrid cells. (a) PKU#Mn4 cells at 24 h, (b) PKU#Mn4 cells at 96 h, (c) PKU#Mn16 cells at 24 h, and (d) PKU#Mn16 cells at 96 h.

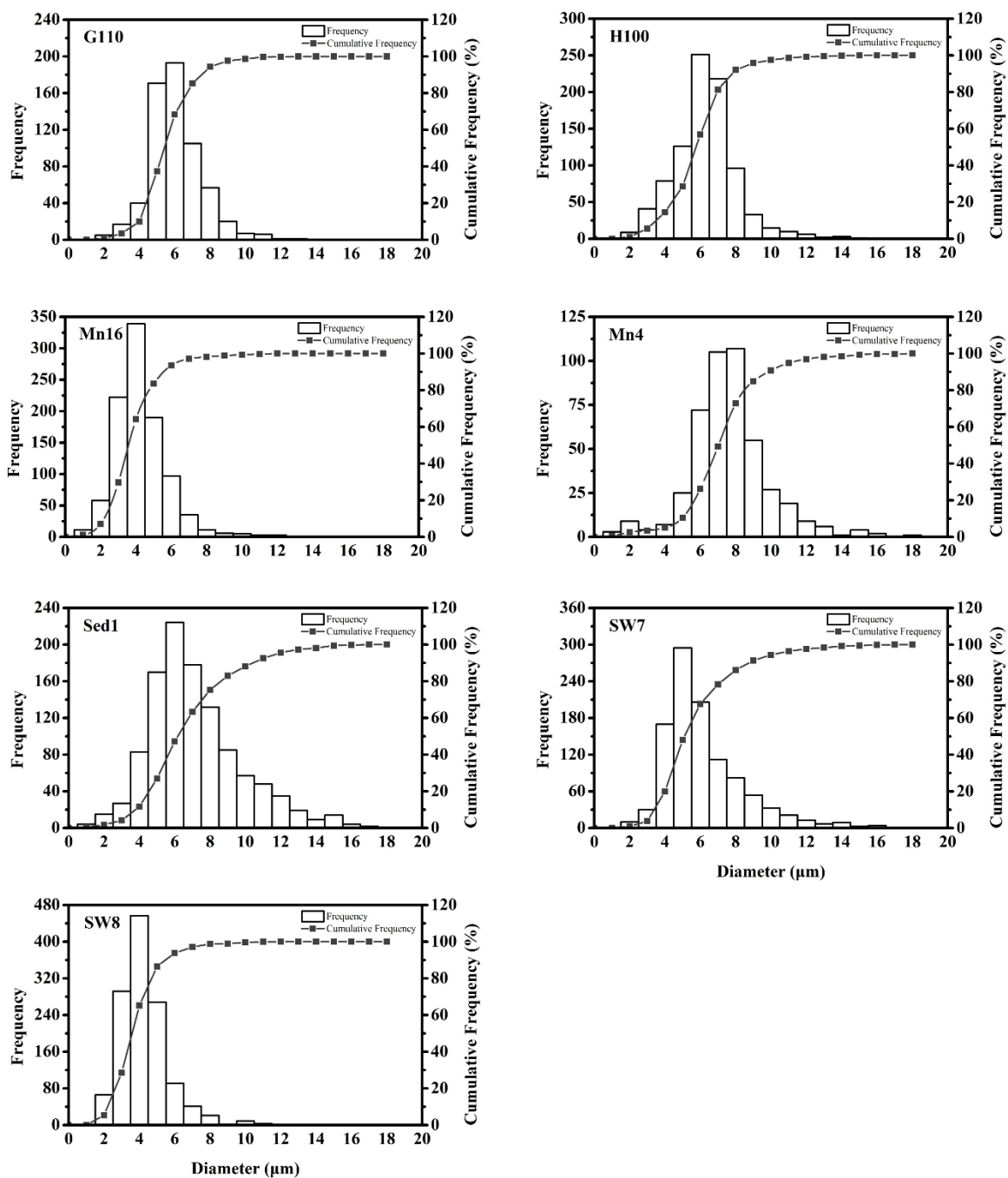


Figure S2: Cell size distribution of thraustochytrid isolates in exponential phase of growth.

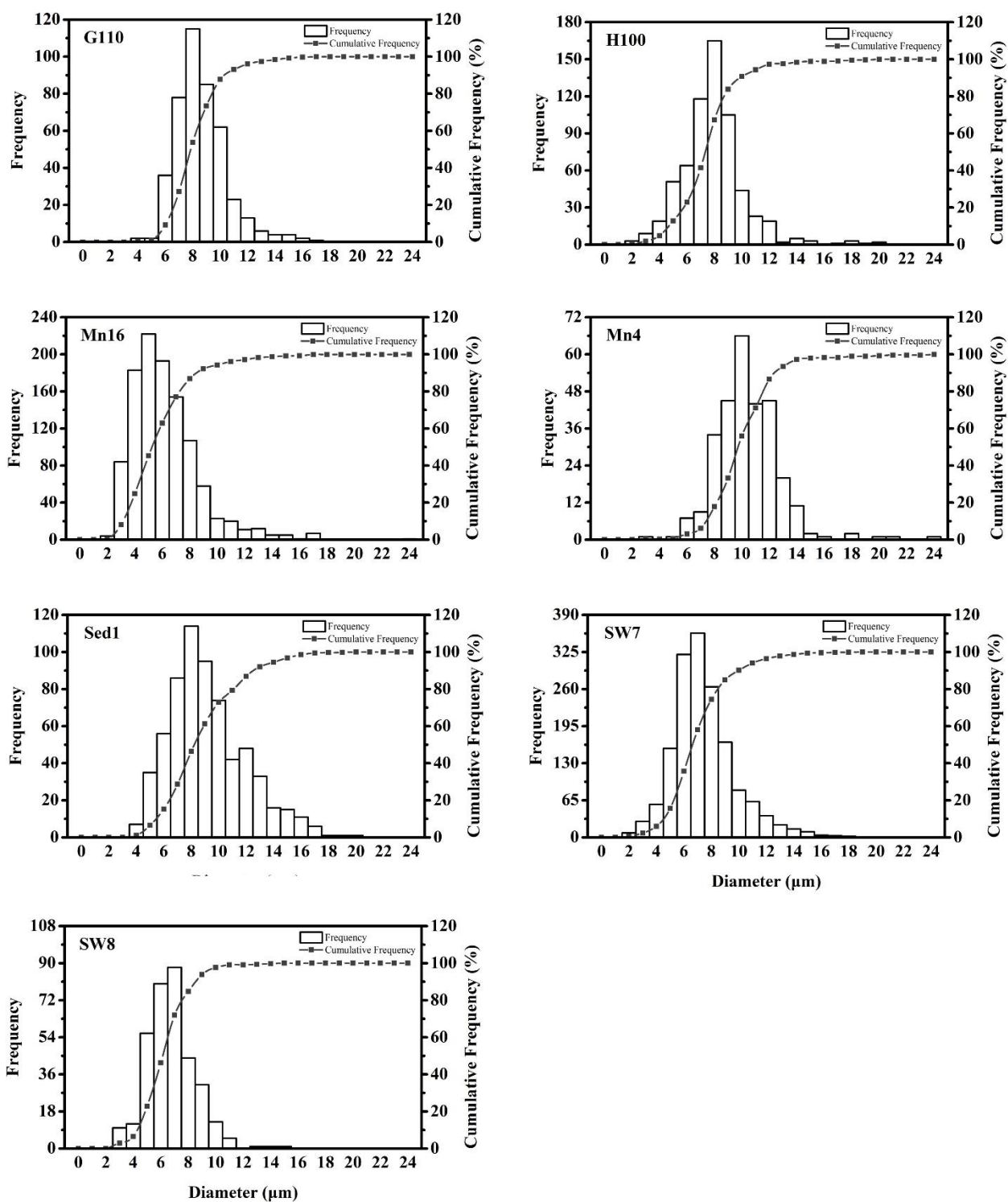


Figure S3: Cell size distribution of thraustochytrid isolates in stationary phase of growth.

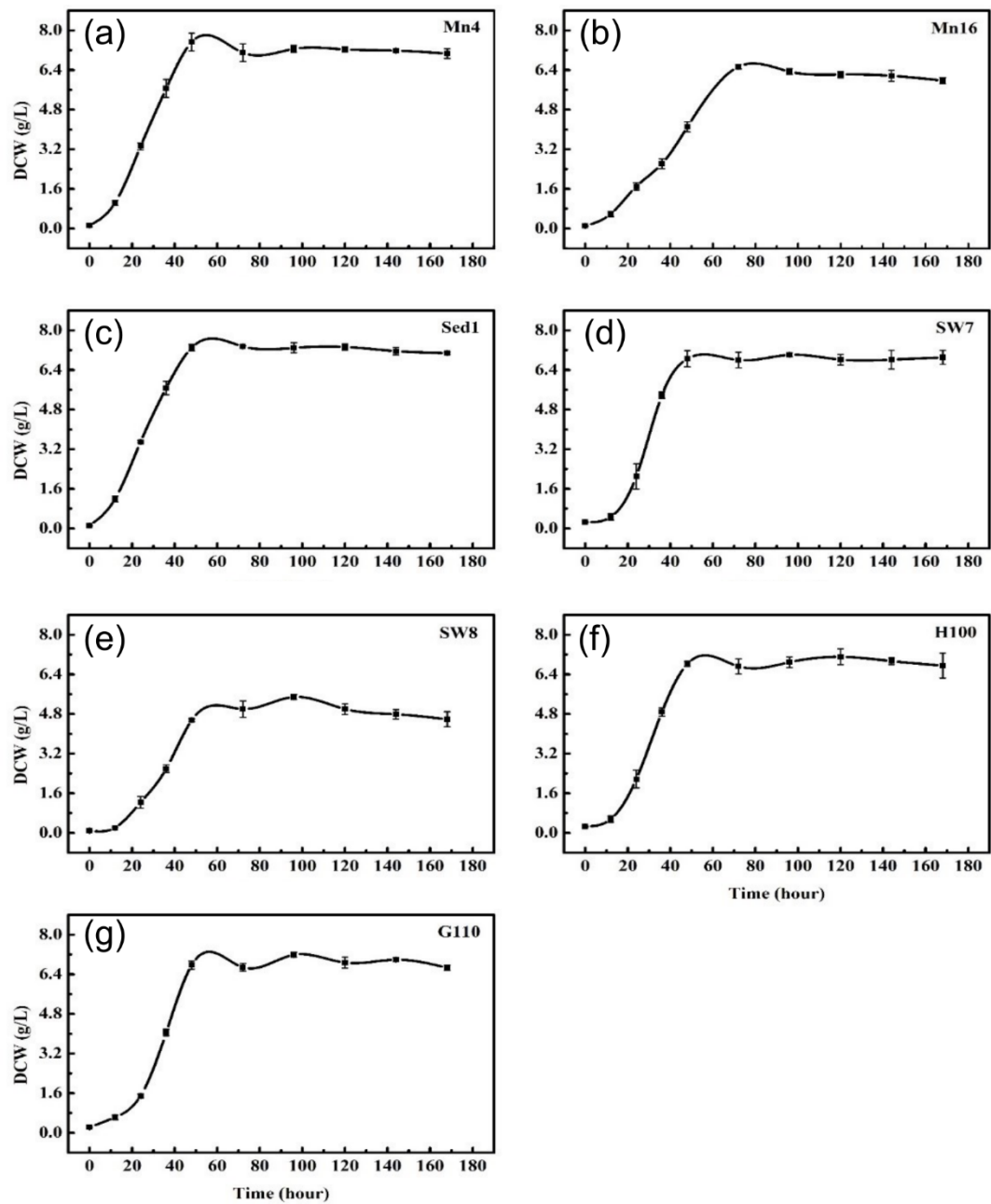


Figure S4: Growth curves of thraustochytrid isolates used in this study.