

6. Supplementary material

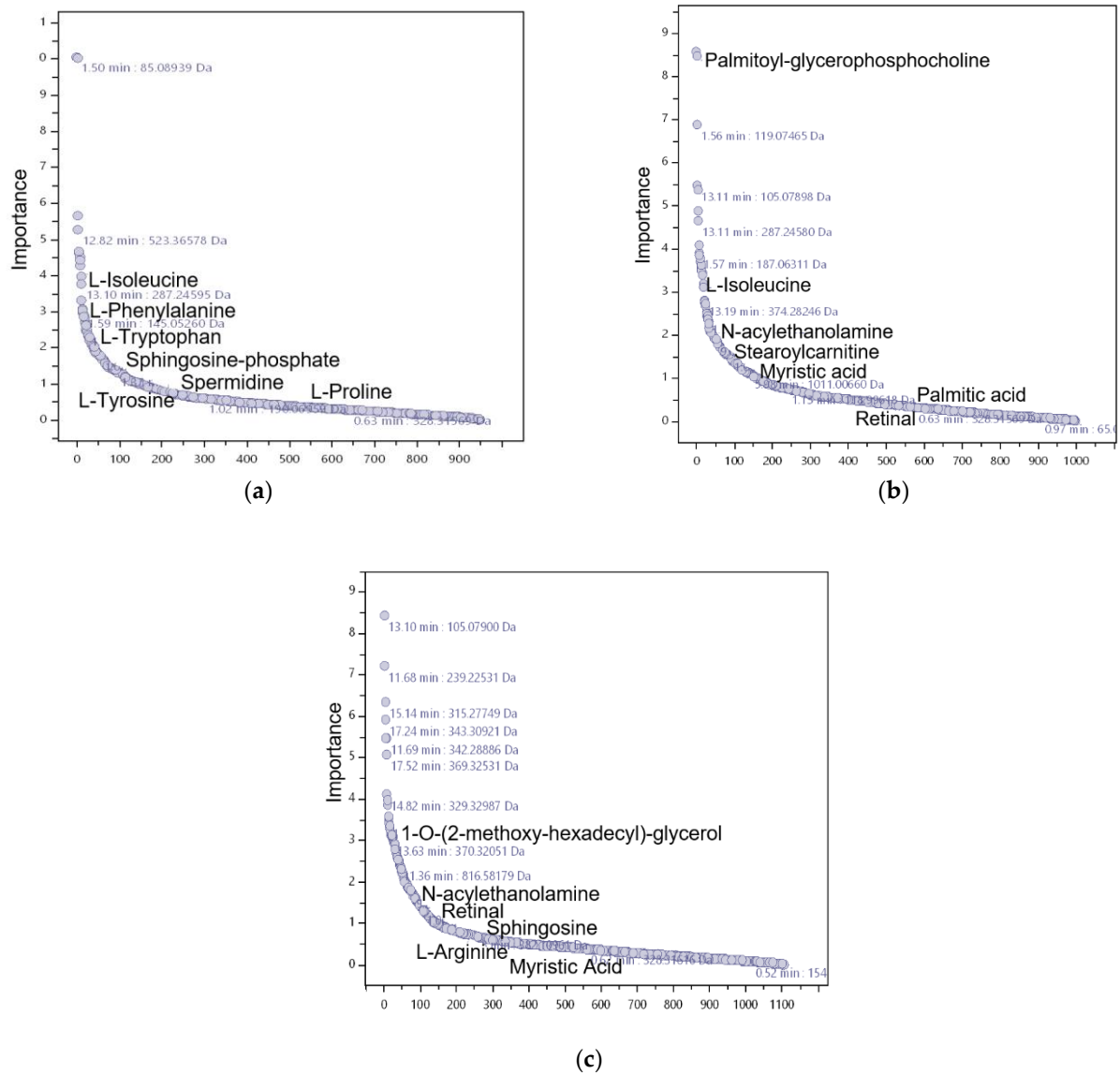
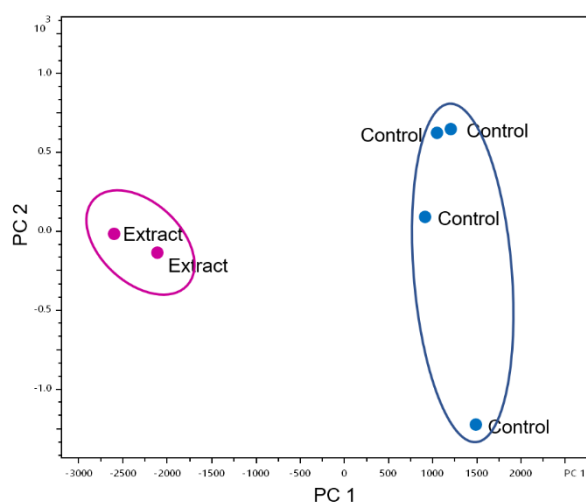
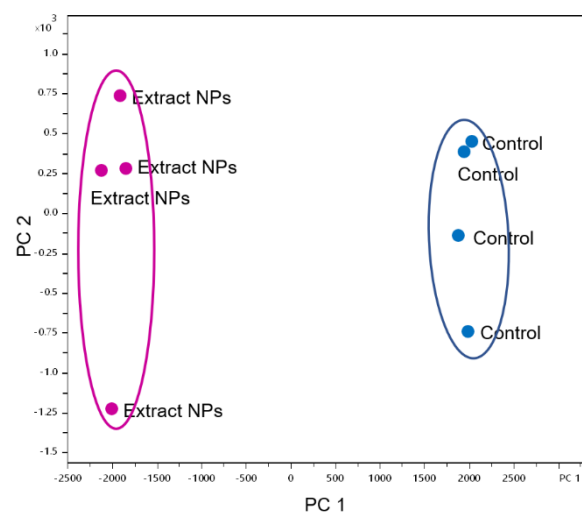


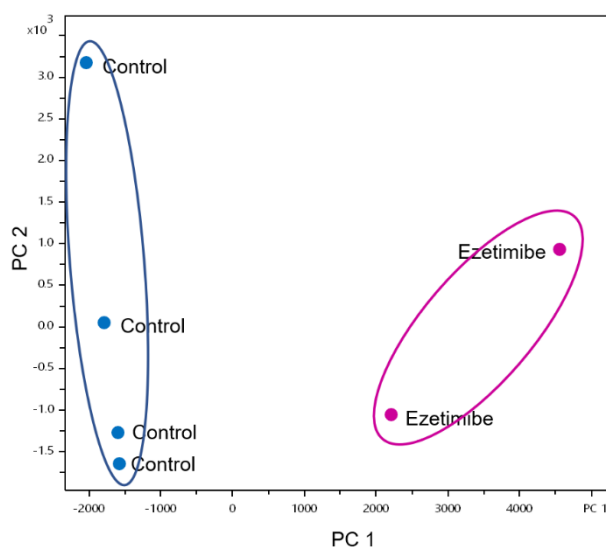
Figure S1. Projection on latent structures (PLS) analysis when (a) *Eisenia bicyclis* extract in the free form, (b) *Eisenia bicyclis* incorporated in BSA NPs and (c) Ezetimibe were administered. Results are from one rat of each test group that demonstrated the highest reduction in cholesterol level.



(a)

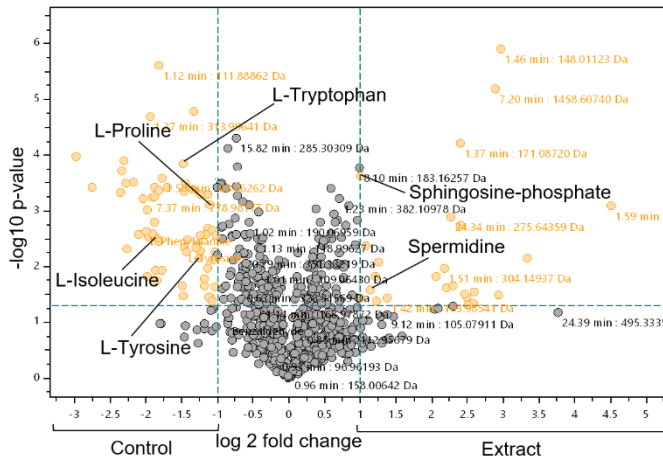


(b)

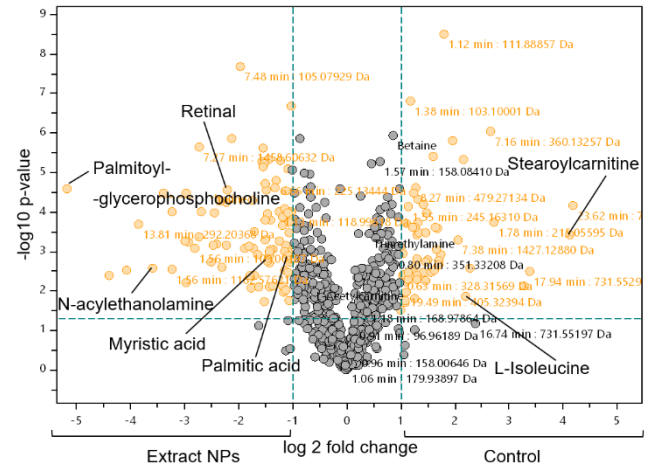


(c)

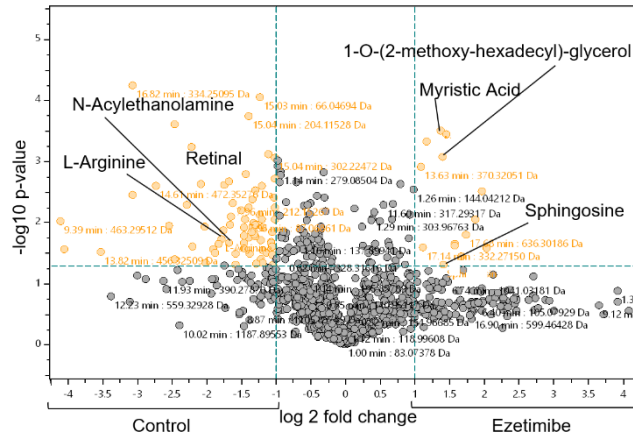
Figure S2. Principal Component Analysis (PCA) when (a) *Eisenia bicyclis* extract in the free form (Extract), (b) *Eisenia bicyclis* incorporated in BSA NPs (Extract NPs) and (c) Ezetimibe were administered. Results are from one rat of each test group that demonstrated the highest reduction in cholesterol level.



(a)



(b)



(c)

Figure S3. Volcano analysis when (a) *Eisenia bicyclis* extract in the free form, (b) *Eisenia bicyclis* incorporated in BSA NPs and (c) Ezetimibe were administered. Results are from one rat of each test group that demonstrated the highest reduction in cholesterol level.