

Supplementary data

New Sorbicillinoids from the Mangrove Endophytic Fungus *Trichoderma reesei* SCNU-F0042.

Jialin Li¹, Tao Chen¹, Jianchen Yu², Hao Jia¹, Chen Chen¹, Yuhua Long^{1,*}

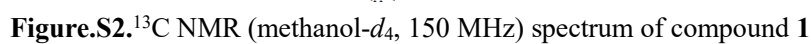
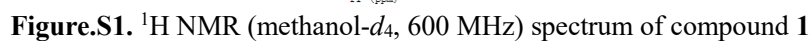
1 GDMPA Key Laboratory for Process Control and Quality Evaluation of Chiral Pharmaceuticals, School of Chemistry, South China Normal University, Guangzhou 510006, China; jialinli@m.scnu.edu.cn (J.L.); chent296@mail2.sysu.edu.cn (T.C.); haojia@m.scnu.edu.cn (H.J.); chenchen2021@m.scnu.edu.cn (C.C.);

2 Key Laboratory of Tropical Disease Control (Sun Yat-sen University), Ministry of Education, Guangzhou 510080, China; Department of Biochemistry, Zhongshan School of Medicine, Sun Yat-sen University, Guangzhou 510080, China; yujch3@mail.sysu.edu.cn (J.Y.)

* Correspondence: longyh@scnu.edu.cn

Contents

Figure.S1. ¹ H NMR (methanol- <i>d</i> ₄ , 600 MHz) spectrum of compound 1	1
Figure.S2. ¹³ C NMR (methanol- <i>d</i> ₄ , 150 MHz) spectrum of compound 1	1
Figure.S3. ¹ H, ¹ H-COSY spectrum (methanol- <i>d</i> ₄ , 600 MHz) spectrum of compound 1	2
Figure.S4. HSQC spectrum (methanol- <i>d</i> ₄ , 600 MHz) spectrum of compound 1	2
Figure.S5. HMBC spectrum (methanol- <i>d</i> ₄ , 600 MHz) spectrum of compound 1	3
Figure.S6. NOESY spectrum (methanol- <i>d</i> ₄ , 600 MHz) spectrum of compound 1	3
Figure.S7. HR-ESI-MS spectrum of compound 1	4
Figure.S8. ¹ H NMR (methanol- <i>d</i> ₄ , 600 MHz) spectrum of compound 2	4
Figure.S9. ¹³ C NMR (methanol- <i>d</i> ₄ , 150 MHz) spectrum of compound 2	5
Figure.S10. ¹ H, ¹ H-COSY spectrum (methanol- <i>d</i> ₄ , 600 MHz) spectrum of compound 2	5
Figure.S11. HSQC spectrum (methanol- <i>d</i> ₄ , 600 MHz) spectrum of compound 2	6
Figure.S12. HMBC spectrum (methanol- <i>d</i> ₄ , 600 MHz) spectrum of compound 2	6
Figure.S13. NOESY spectrum (methanol- <i>d</i> ₄ , 600 MHz) spectrum of compound 2	7
Figure.S14. HR-ESI-MS spectrum of compound 2	7
Figure.S15. ¹ H NMR (methanol- <i>d</i> ₄ , 600 MHz) spectrum of compound 3	8
Figure.S16. ¹³ C NMR (methanol- <i>d</i> ₄ , 150 MHz) spectrum of compound 3	8
Figure.S17. ¹ H, ¹ H- COSY spectrum (methanol- <i>d</i> ₄ , 600 MHz) spectrum of compound 3	9
Figure.S18. HSQC spectrum (methanol- <i>d</i> ₄ , 600 MHz) spectrum of compound 3	9
Figure.S19. HMBC spectrum (methanol- <i>d</i> ₄ , 600 MHz) spectrum of compound 3	10
Figure.S20. NOESY spectrum (methanol- <i>d</i> ₄ , 600 MHz) spectrum of compound 3	10
Figure.S21. HR-ESI-MS spectrum of compound 3	11
Figure.S22. ¹ H NMR (acetone- <i>d</i> ₆ , 600 MHz) spectrum of compound 5	11
Figure.S23. ¹³ C NMR (acetone- <i>d</i> ₆ , 150 MHz) spectrum of compound 5	12
Figure.S24. ¹ H, ¹ H- COSY spectrum (acetone- <i>d</i> ₆ , 600 MHz) spectrum of compound 5	12
Figure.S25. HSQC spectrum (acetone- <i>d</i> ₆ , 600 MHz) spectrum of compound 5	13
Figure.S26. HMBC spectrum (acetone- <i>d</i> ₆ , 600 MHz) spectrum of compound 5	13
Figure.S27. HR-ESI-MS spectrum of compound 5	14
Figure.S28. Molecular networking of the EtOAc extract from strain <i>Trichoderma reesei</i> SCNU-F0042	15



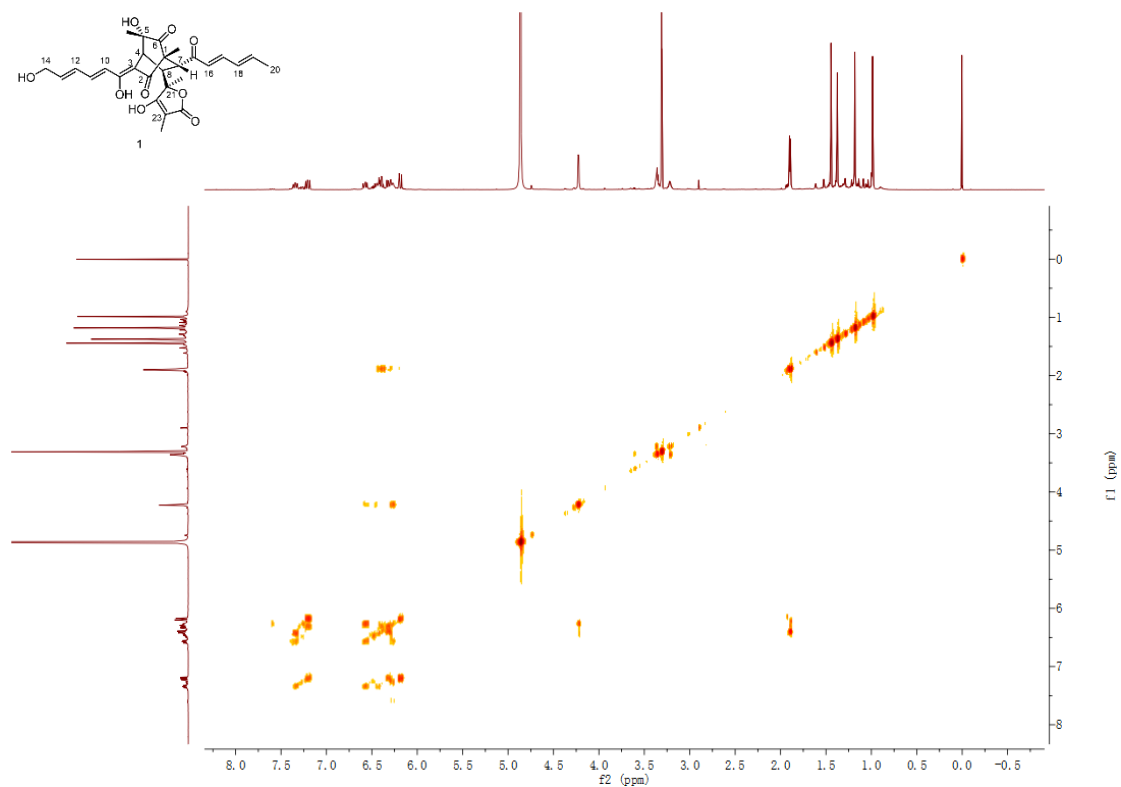


Figure.S3. ^1H , ^1H -COSY spectrum (methanol- d_4 , 600 MHz) spectrum of compound **1**

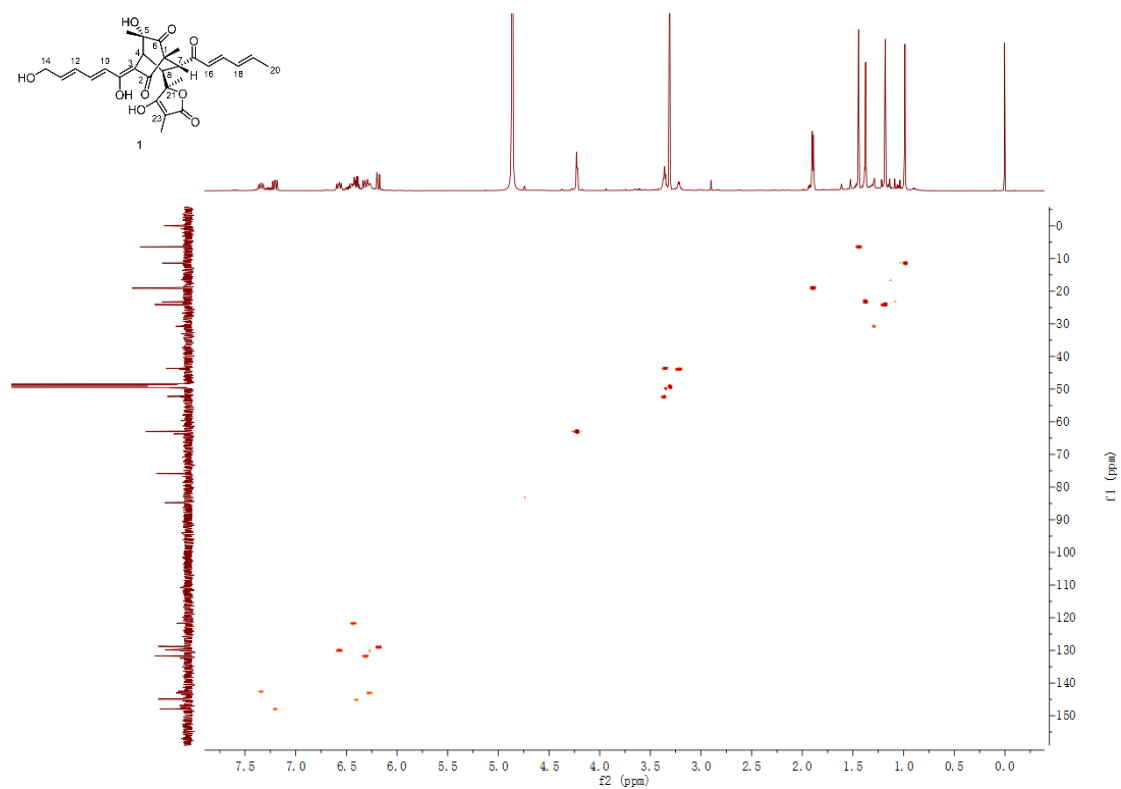


Figure.S4. HSQC spectrum (methanol- d_4 , 600 MHz) spectrum of compound **1**

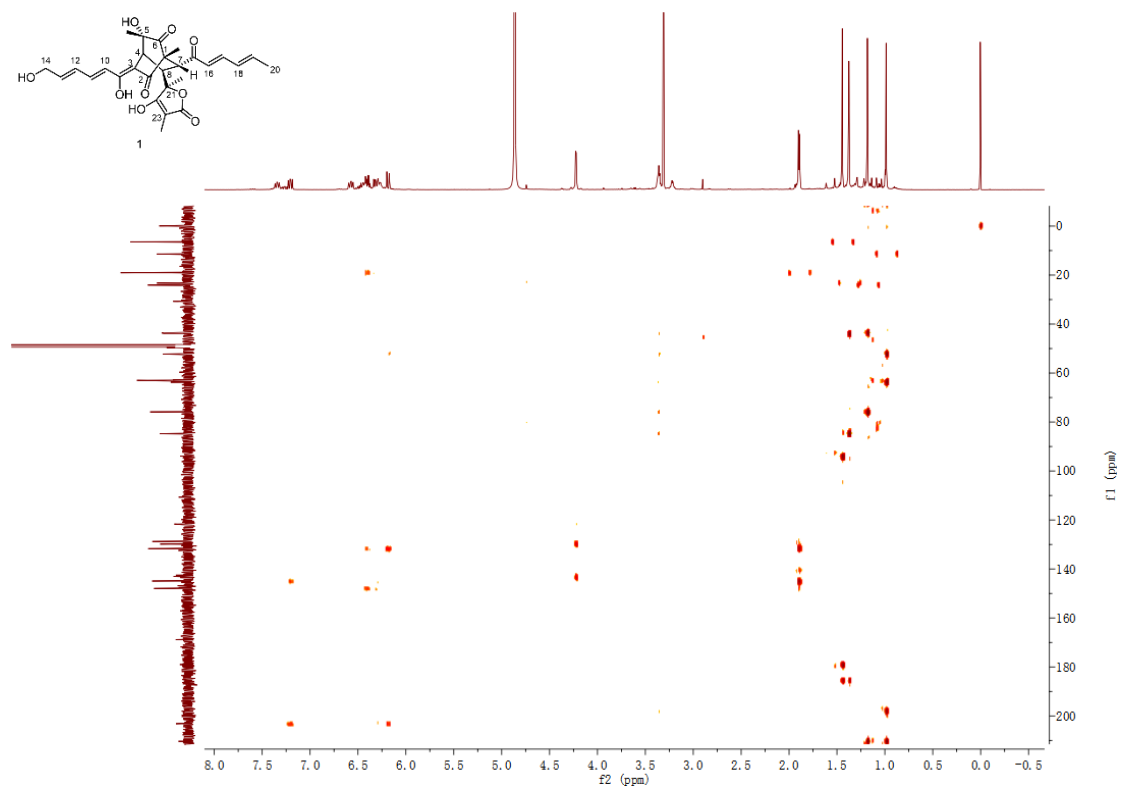


Figure.S5. HMBC spectrum (methanol- d_4 , 600 MHz) spectrum of compound **1**

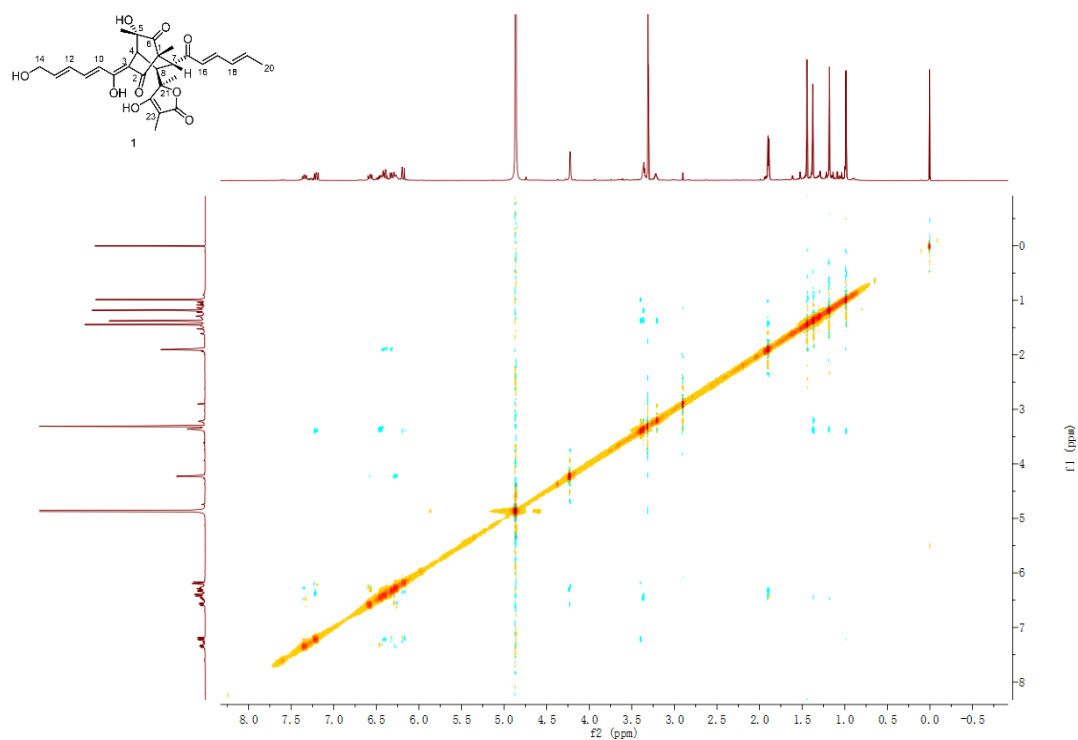


Figure.S6. NOESY spectrum (methanol- d_4 , 600 MHz) spectrum of compound **1**

2106A0617-2-neg_HRMS #9-22 RT: 0.06-0.12 AV: 14 SB: 1 0.02 NL:
T: FTMS - c ESI Full ms [100.00-1000.00]

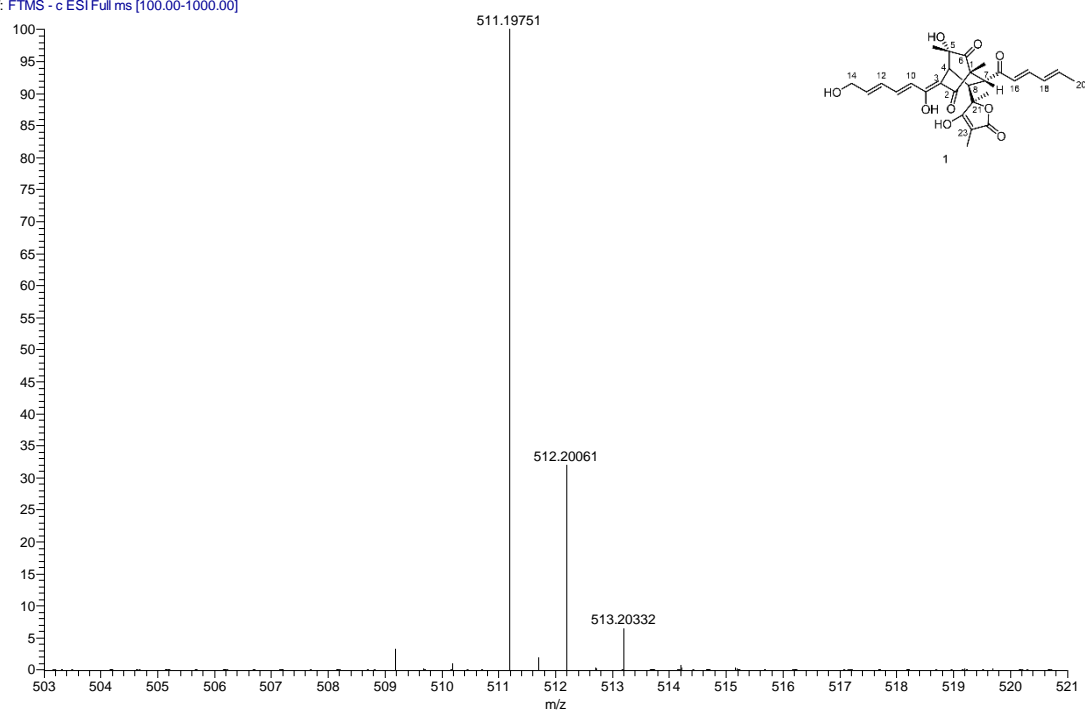


Figure.S7. HR-ESI-MS spectrum of compound 1

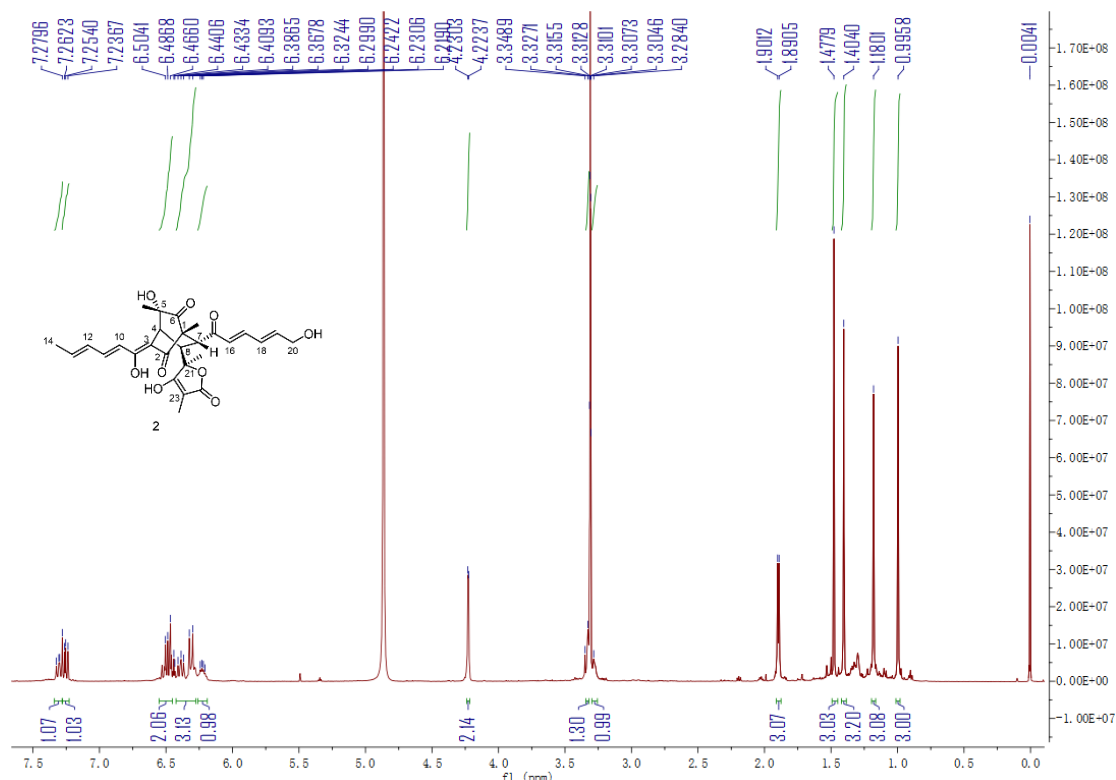


Figure.S8. ¹H NMR (methanol-*d*₄, 600 MHz) spectrum of compound 2

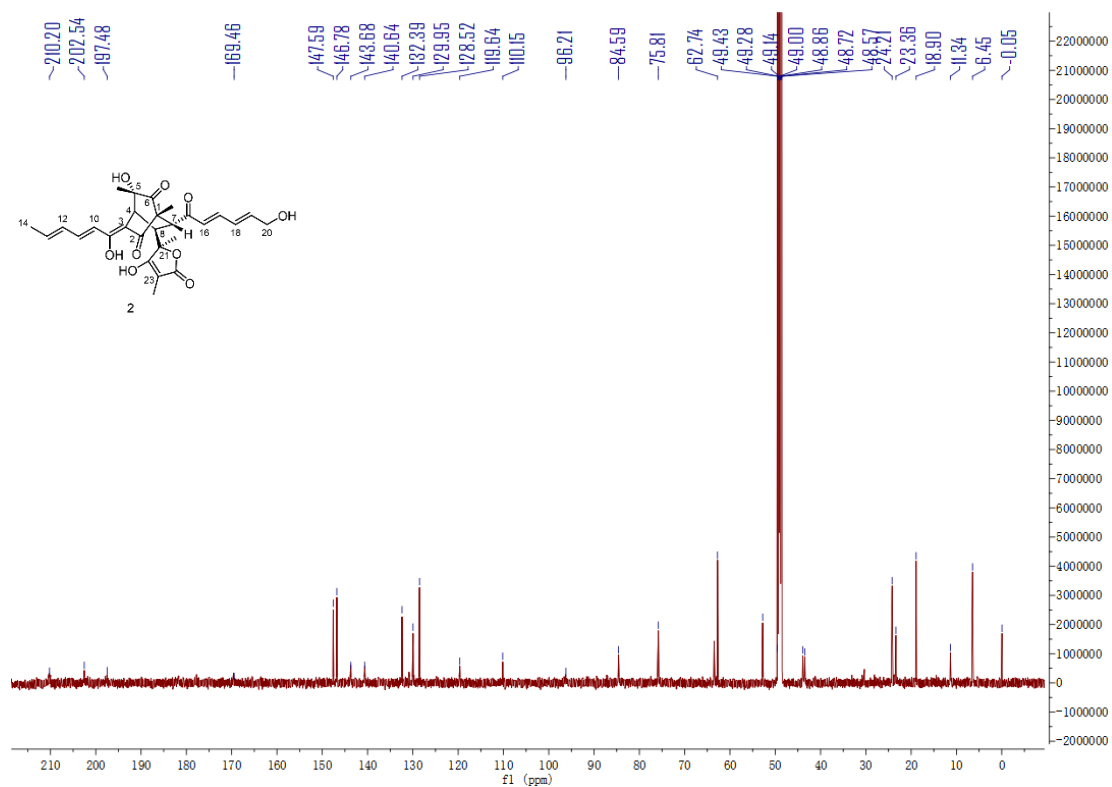


Figure.S9. ^{13}C NMR (methanol- d_4 , 150 MHz) spectrum of compound 2

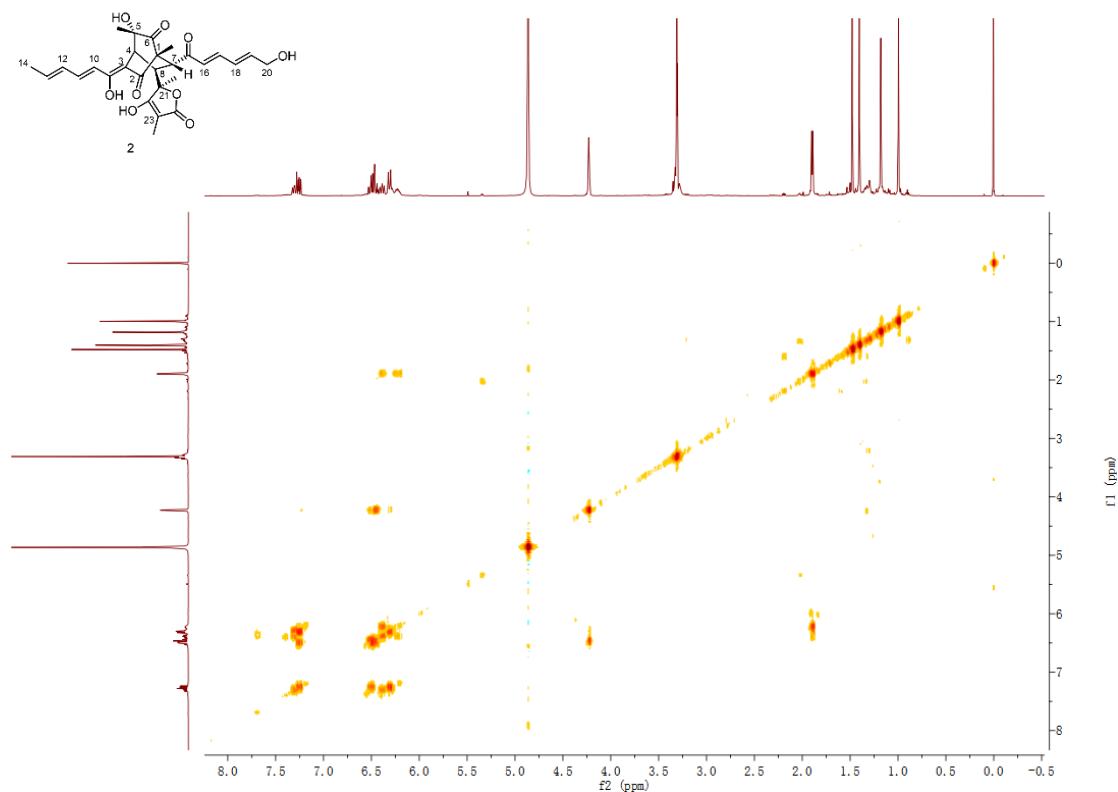


Figure.S10. ^1H , ^1H -COSY spectrum (methanol- d_4 , 600 MHz) spectrum of compound 2

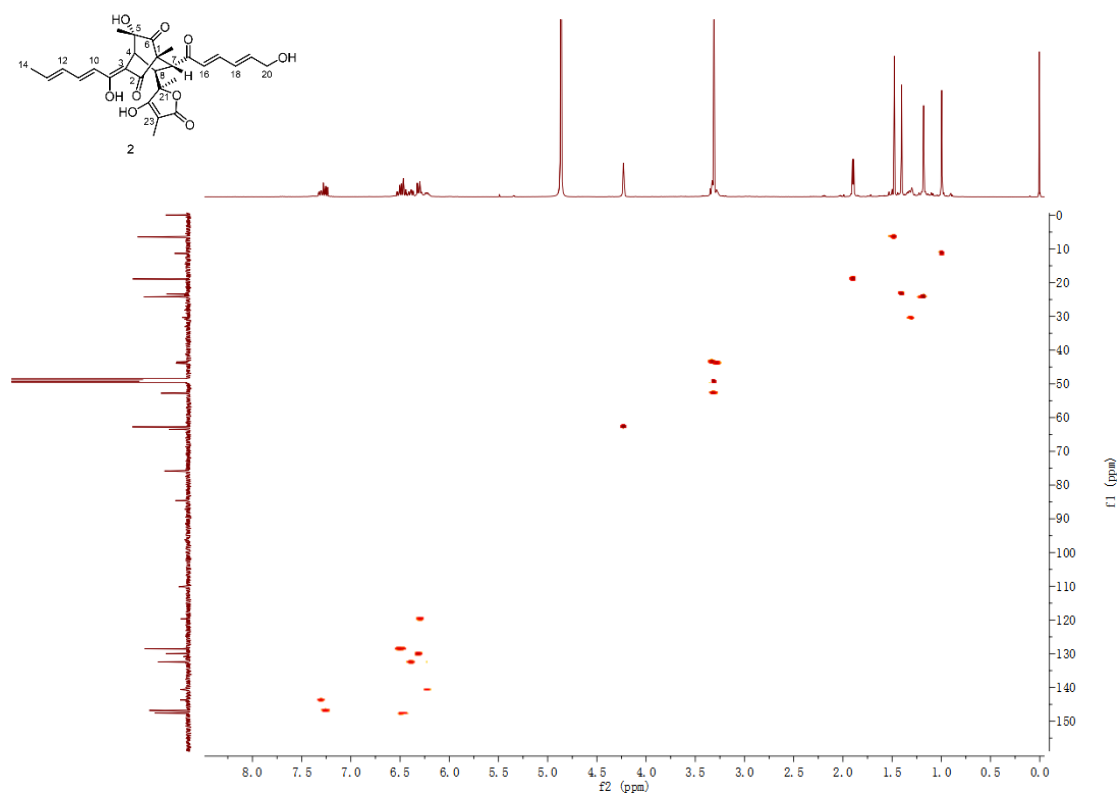


Figure.S11. HSQC spectrum (methanol-*d*₄, 600 MHz) spectrum of compound **2**

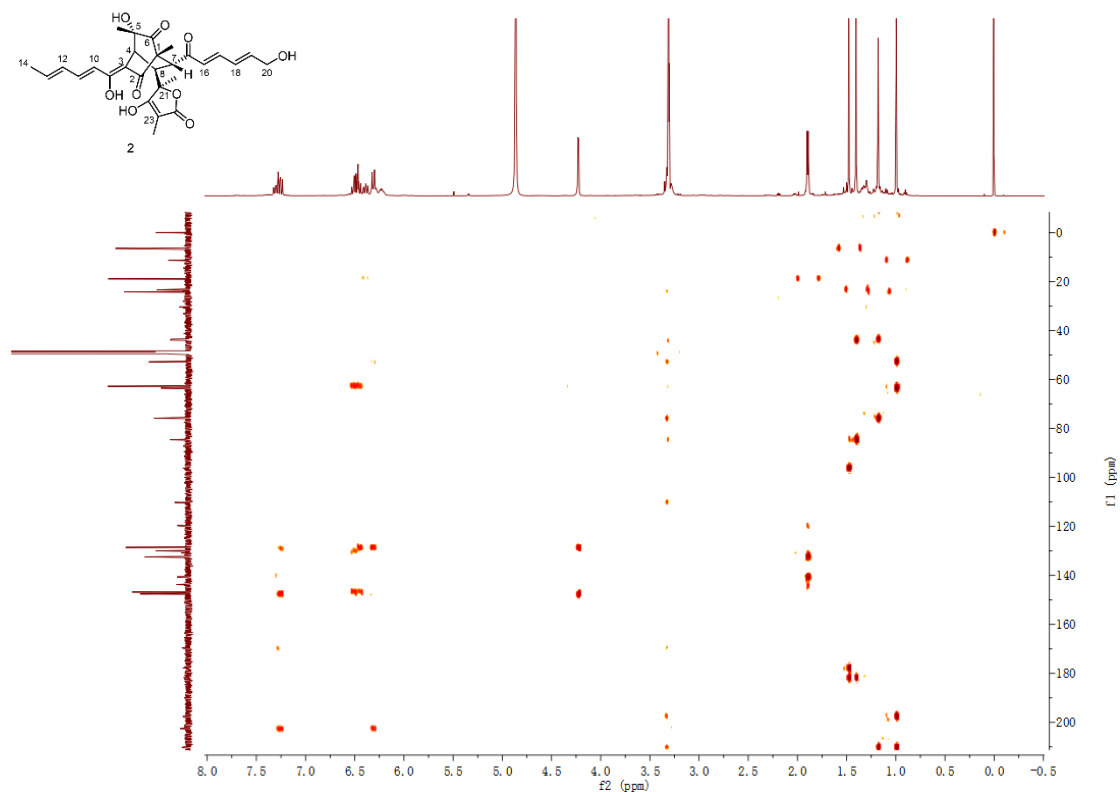


Figure.S12. HMBC spectrum (methanol-*d*₄, 600 MHz) spectrum of compound **2**

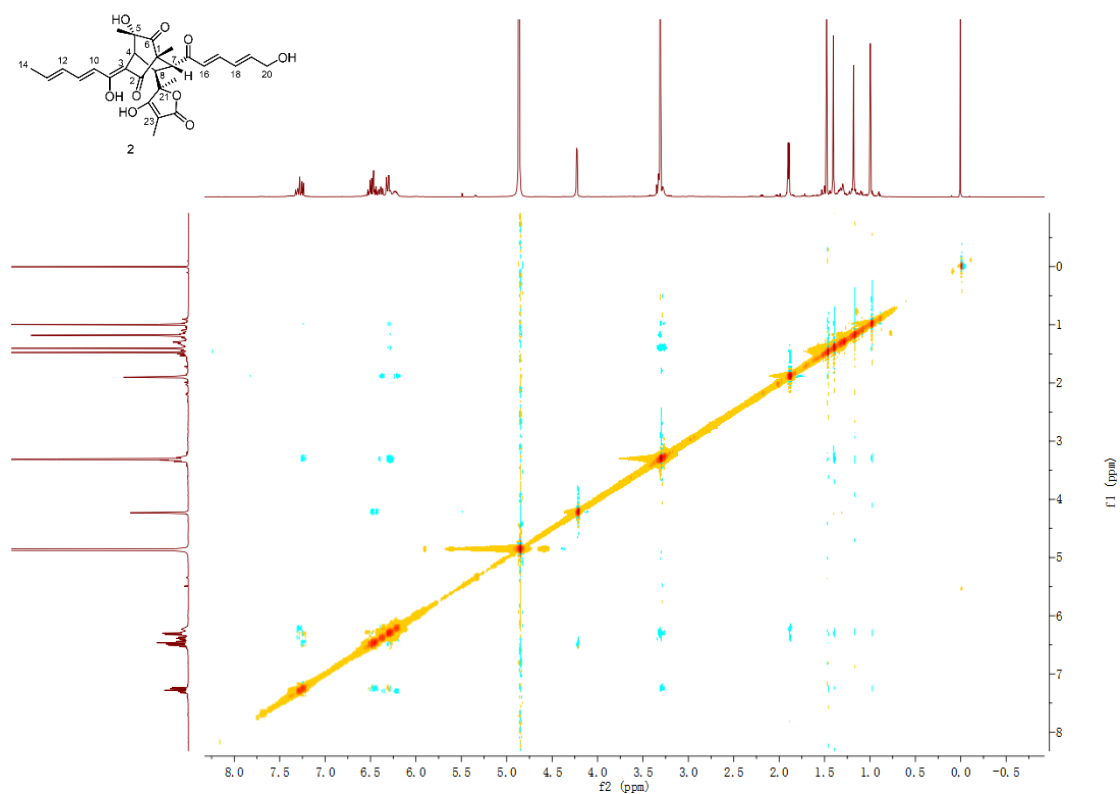


Figure.S13. NOESY spectrum (methanol- d_4 , 600 MHz) spectrum of compound **2**

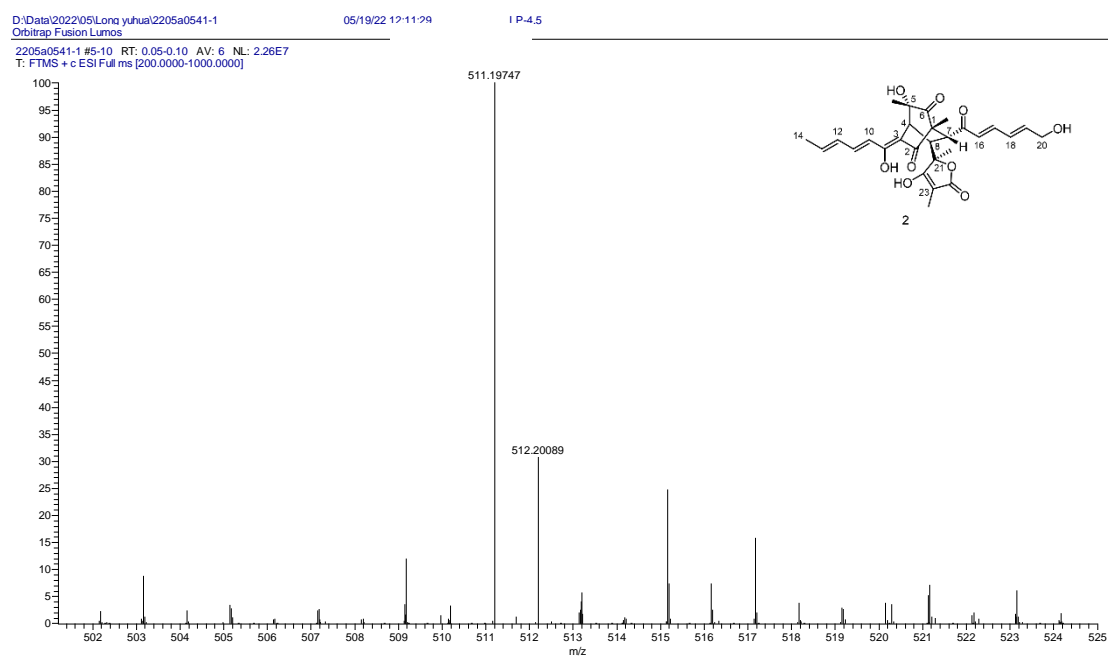


Figure.S14. HR-ESI-MS spectrum of compound **2**

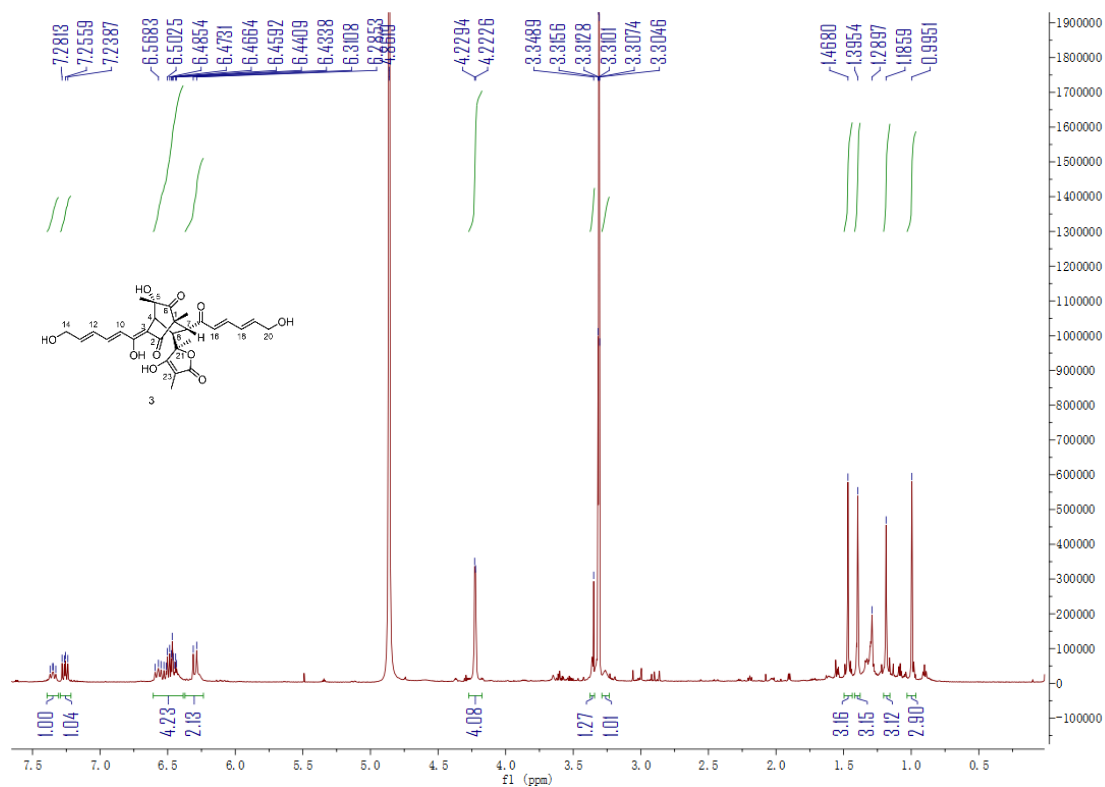


Figure.S15. ¹H NMR (methanol-*d*₄, 600 MHz) spectrum of compound **3**

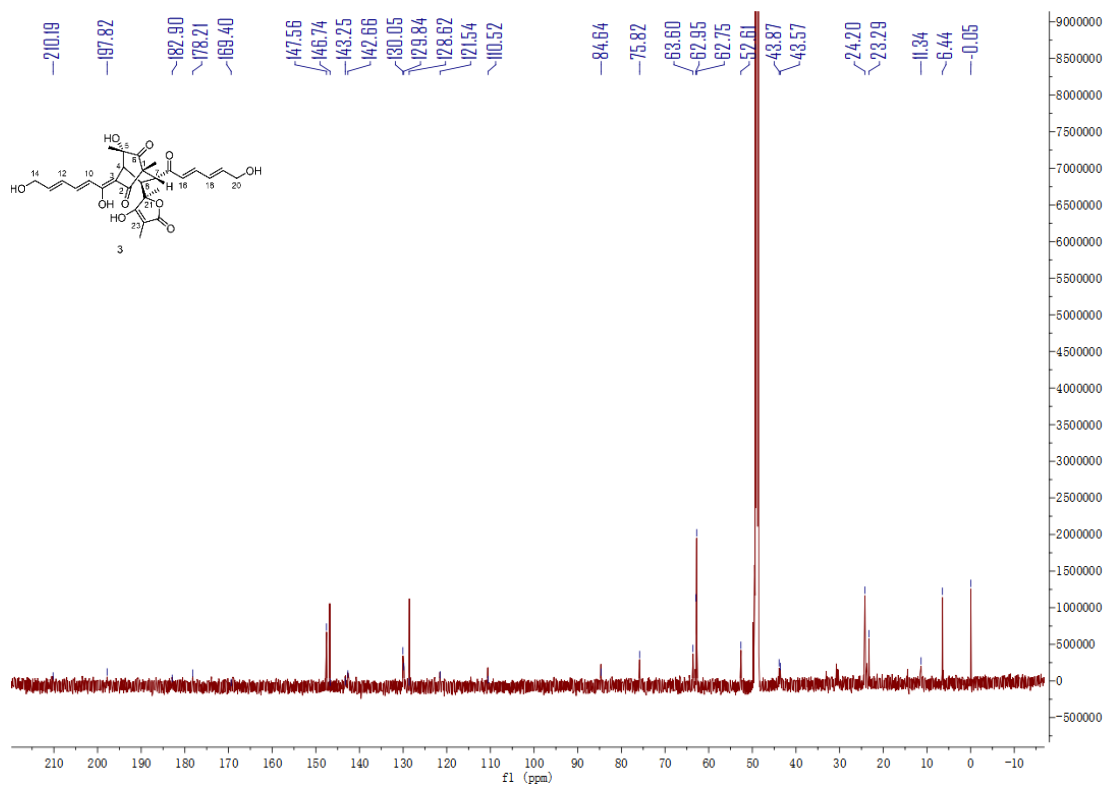


Figure.S16. ¹³C NMR (methanol-*d*₄, 150 MHz) spectrum of compound **3**

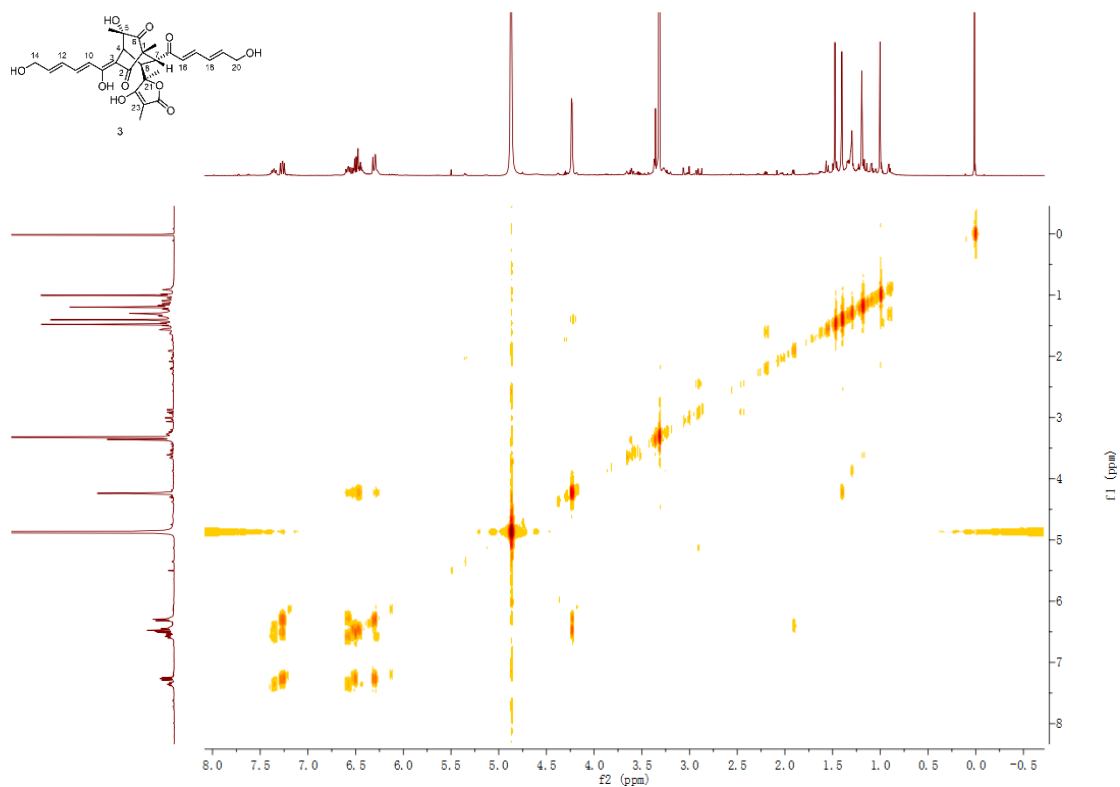


Figure.S17. ^1H , ^1H - COSY spectrum (methanol- d_4 , 600 MHz) spectrum of compound **3**

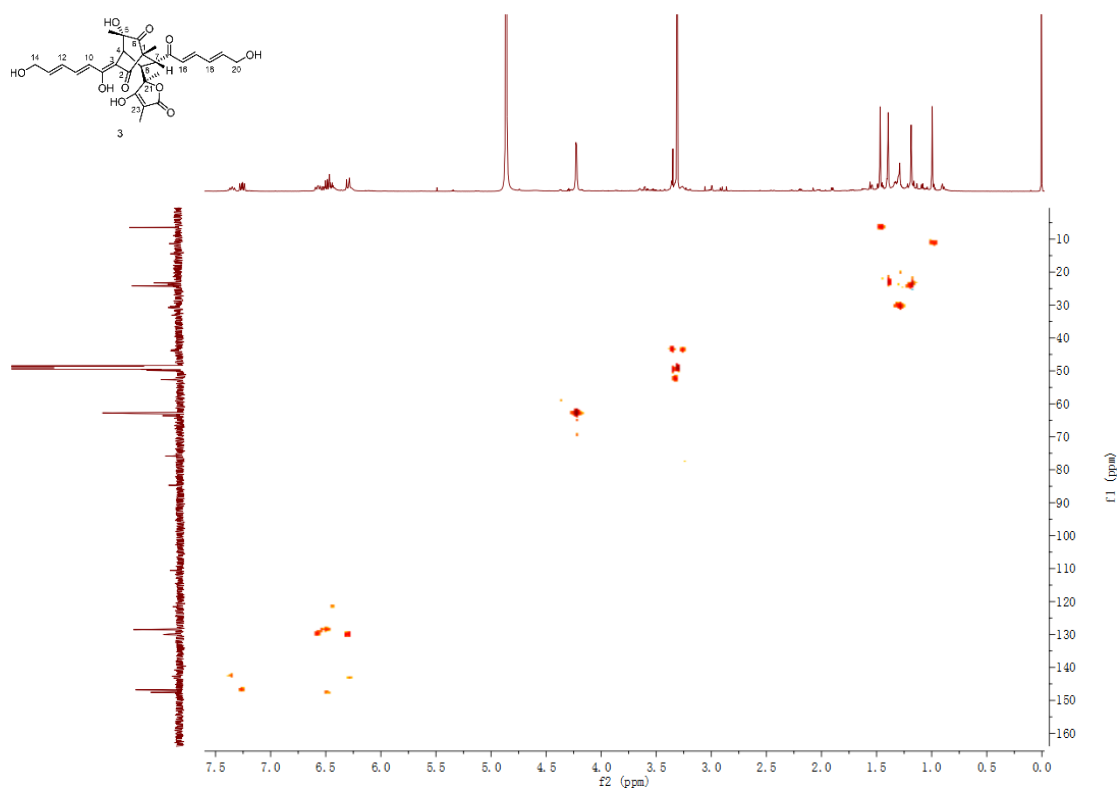


Figure.S18. HSQC spectrum (methanol- d_4 , 600 MHz) spectrum of compound **3**

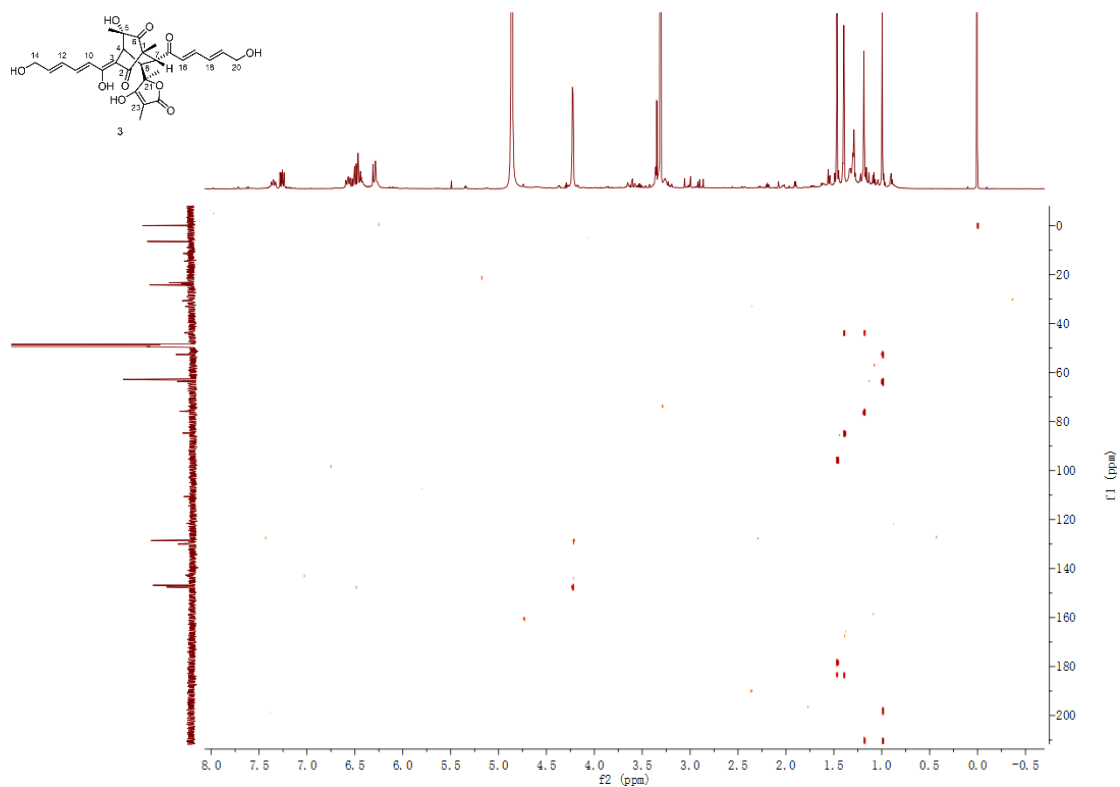


Figure.S19. HMBC spectrum (methanol-*d*₄, 600 MHz) spectrum of compound **3**

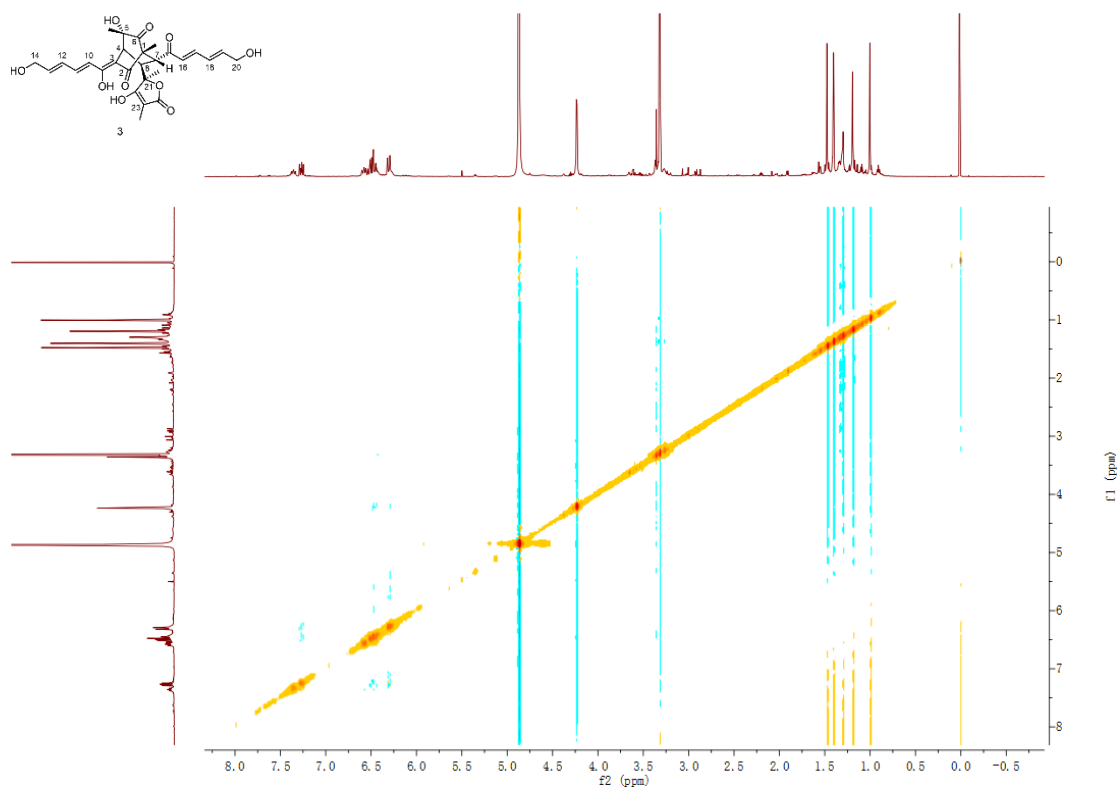


Figure.S20. NOESY spectrum (methanol-*d*₄, 600 MHz) spectrum of compound **3**

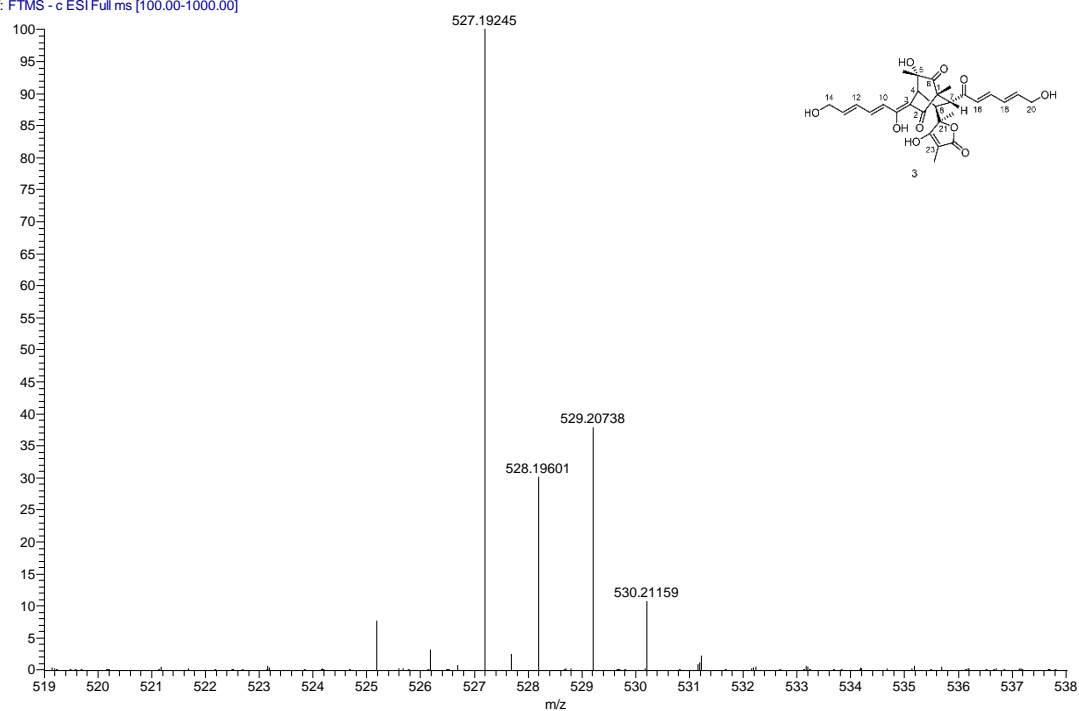
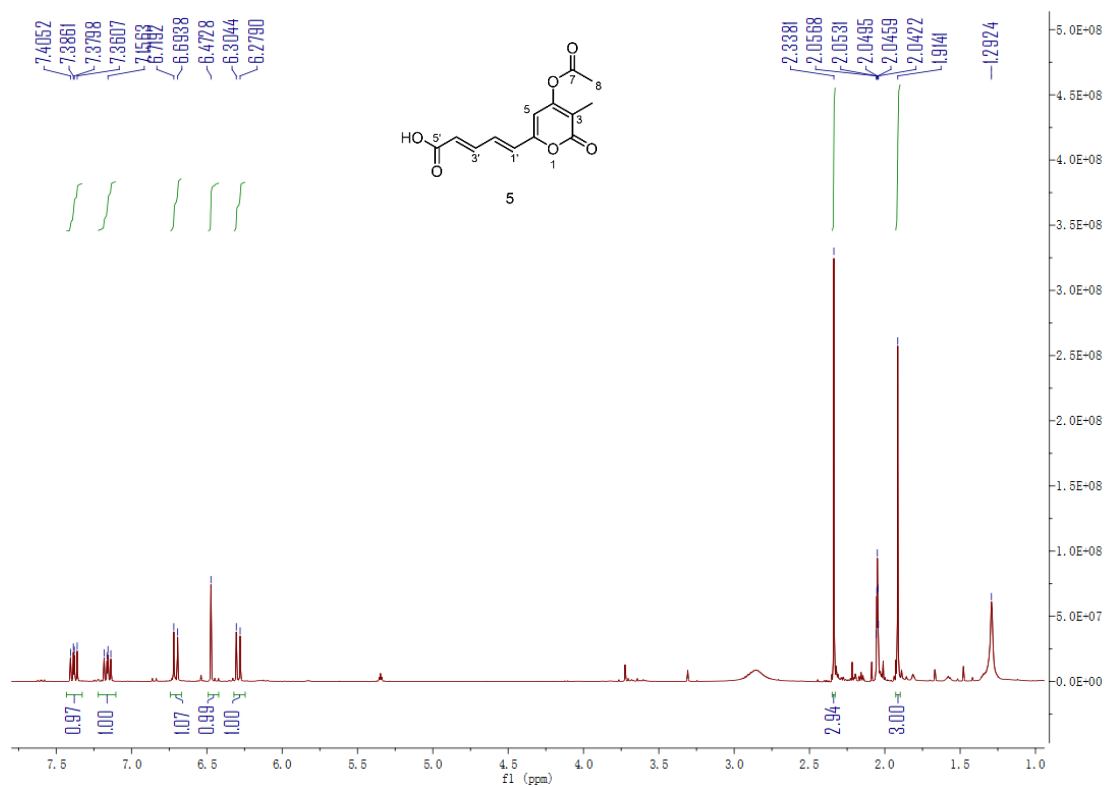


Figure.S21. HR-ESI-MS spectrum of compound 3

Figure.S22. ¹H NMR (acetone-d₆, 600 MHz) spectrum of compound 5.

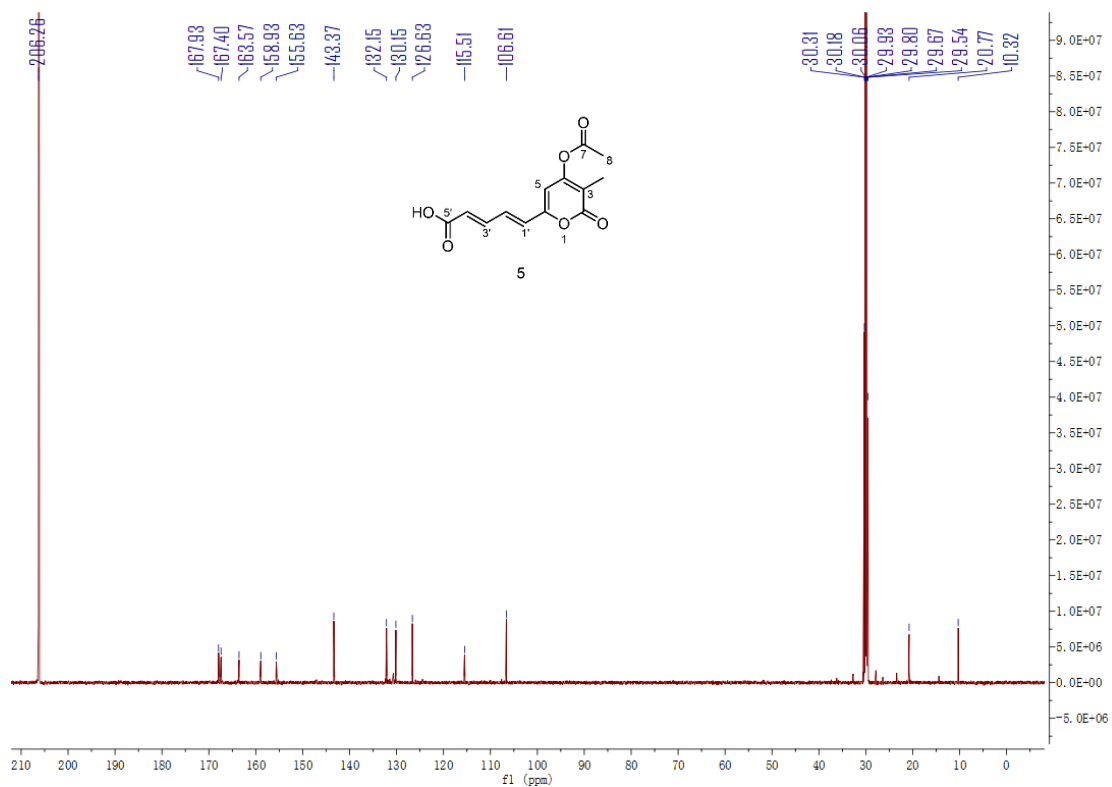


Figure.S23. ^{13}C NMR (acetone- d_6 , 150 MHz) spectrum of compound **5**

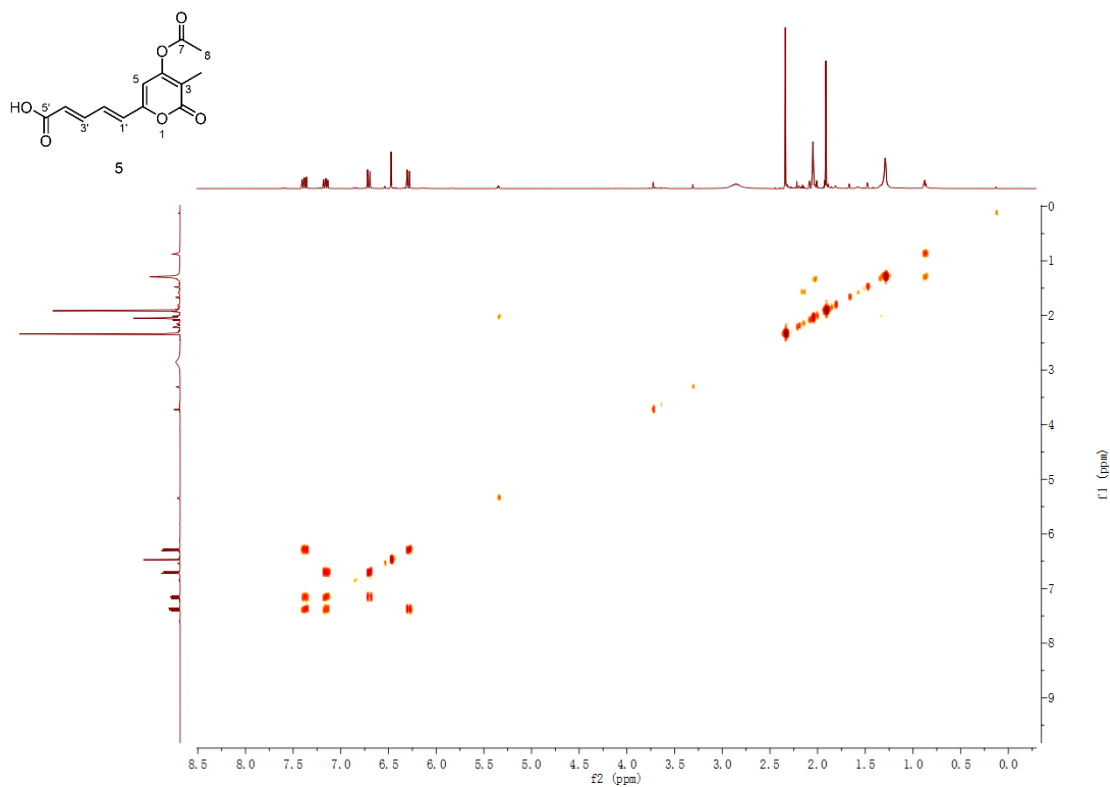


Figure.S24. ^1H , ^1H -COSY spectrum (acetone- d_6 , 600 MHz) spectrum of compound **5**

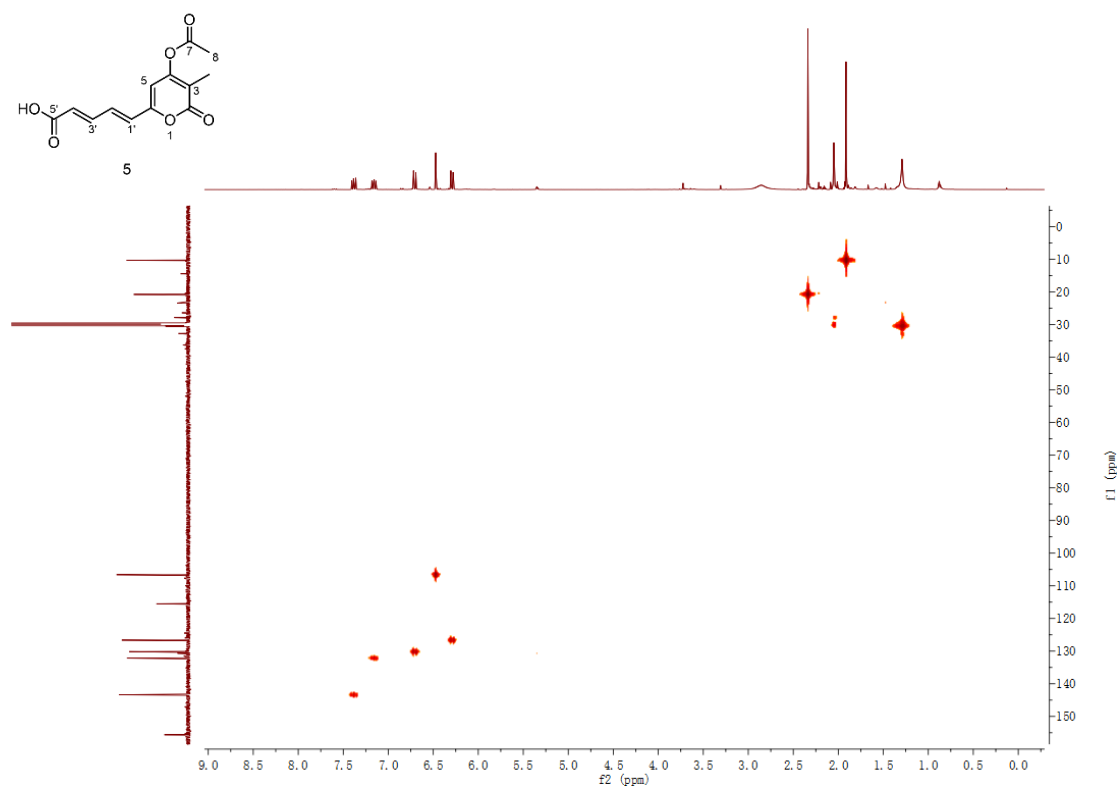


Figure.S25. HSQC spectrum (acetone- d_6 , 600 MHz) spectrum of compound **5**

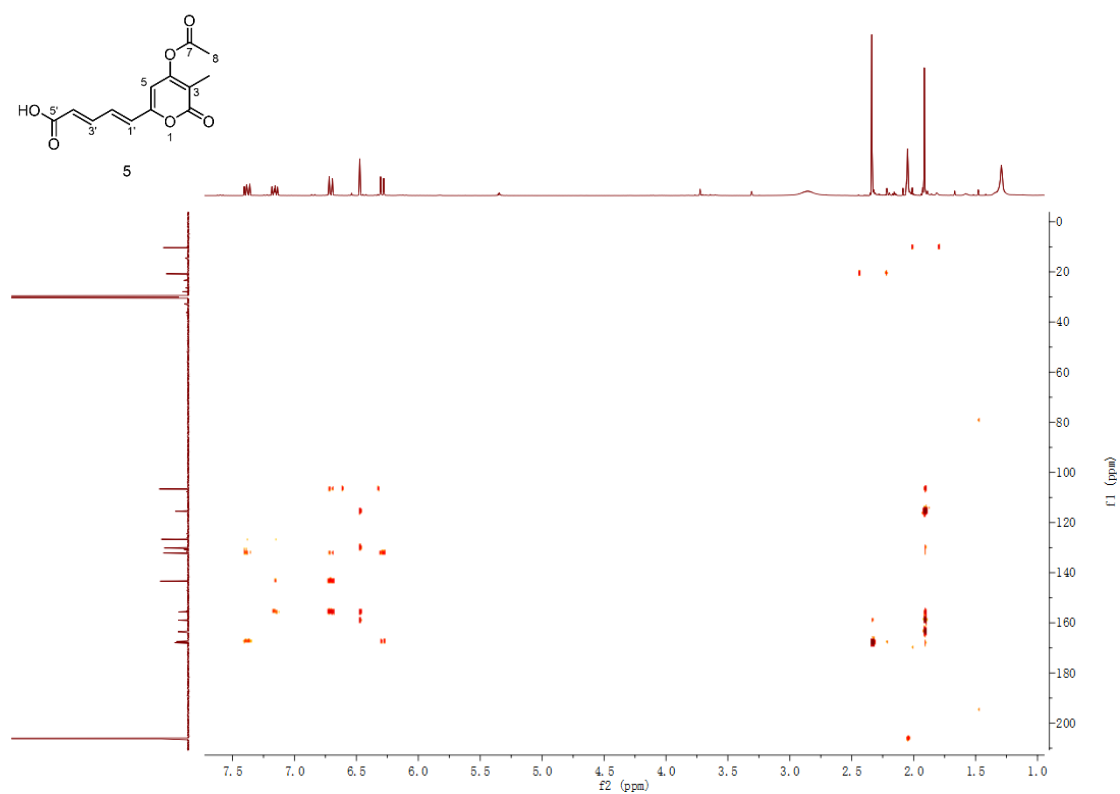


Figure.S26. HMBC spectrum (acetone- d_6 , 600 MHz) spectrum of compound **5**

2106A0617-1-neg_HRMS #17-19 RT: 0.10-0.11 AV: 3 NL: 2.86E6
T: FTMS - c ESI Full ms [100.00-1000.00]

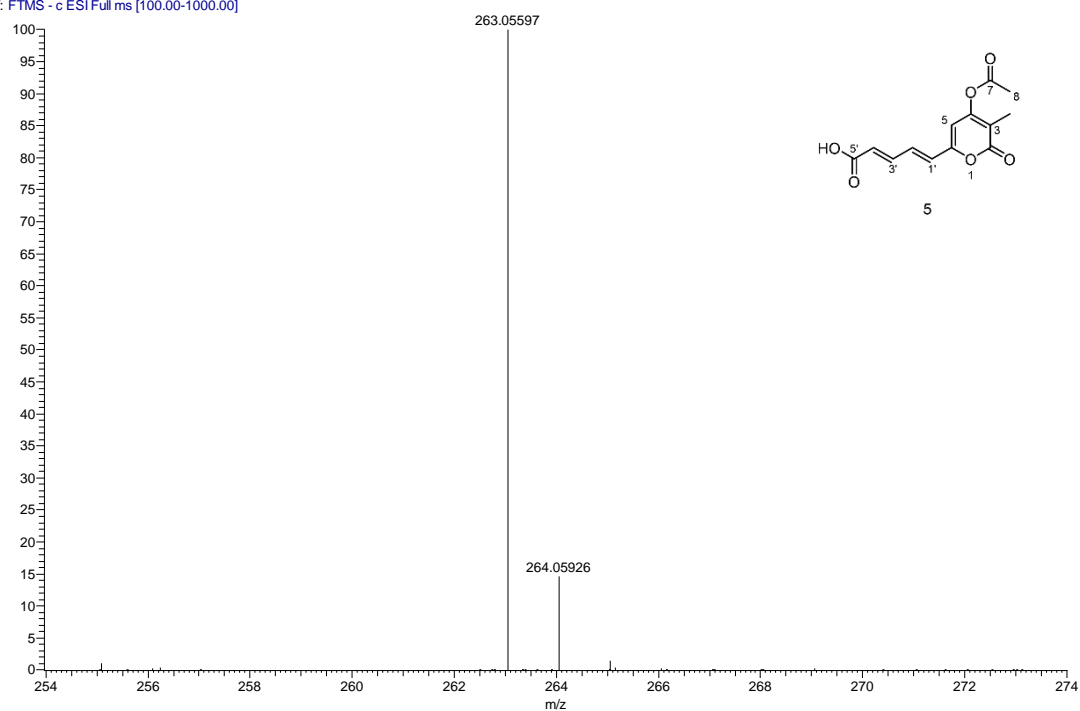


Figure.S27. HR-ESI-MS spectrum of compound **5**

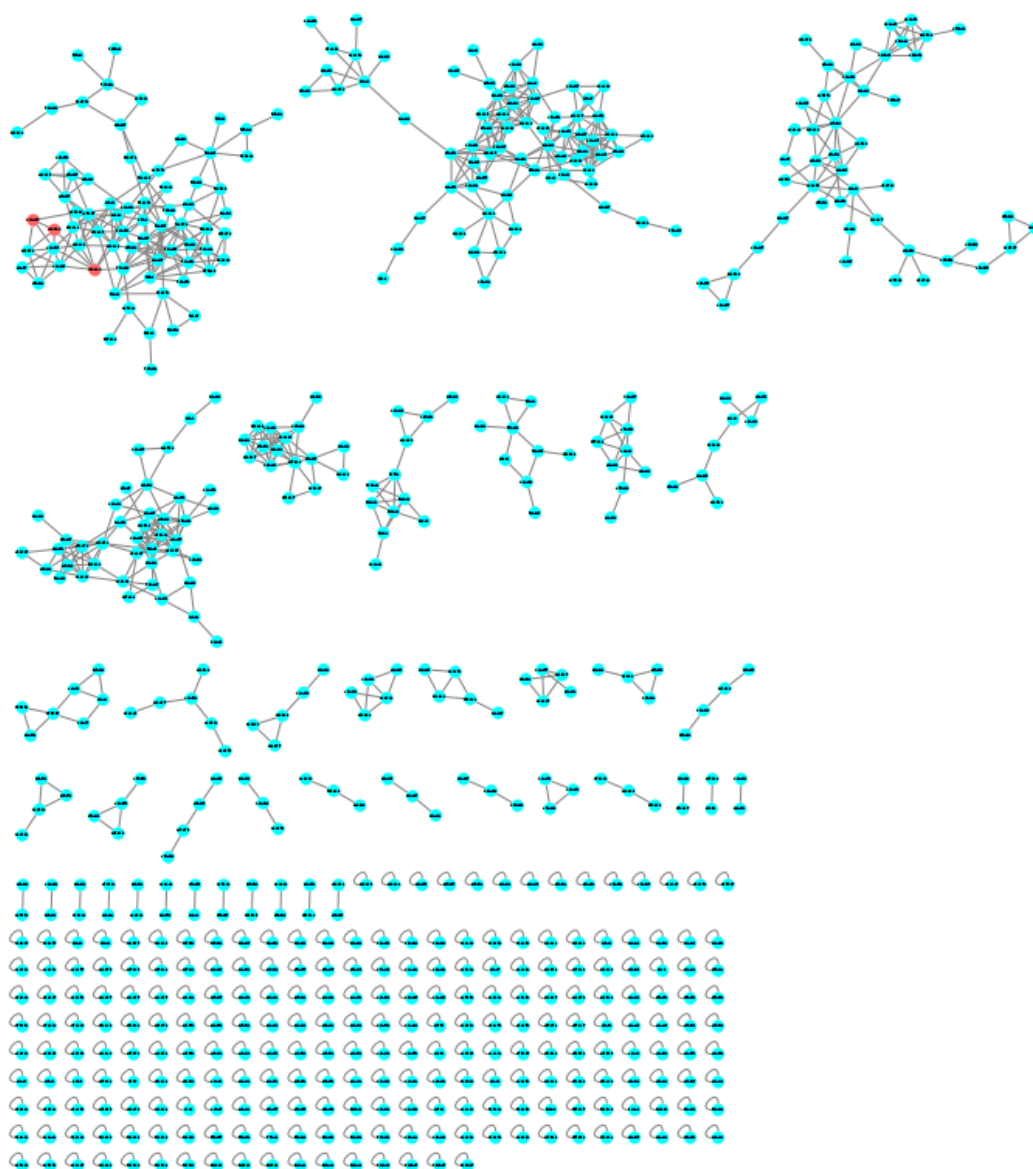


Figure.S28. Molecular networking of the EtOAc extract from strain *Trichoderma reesei* SCNU-F0042.