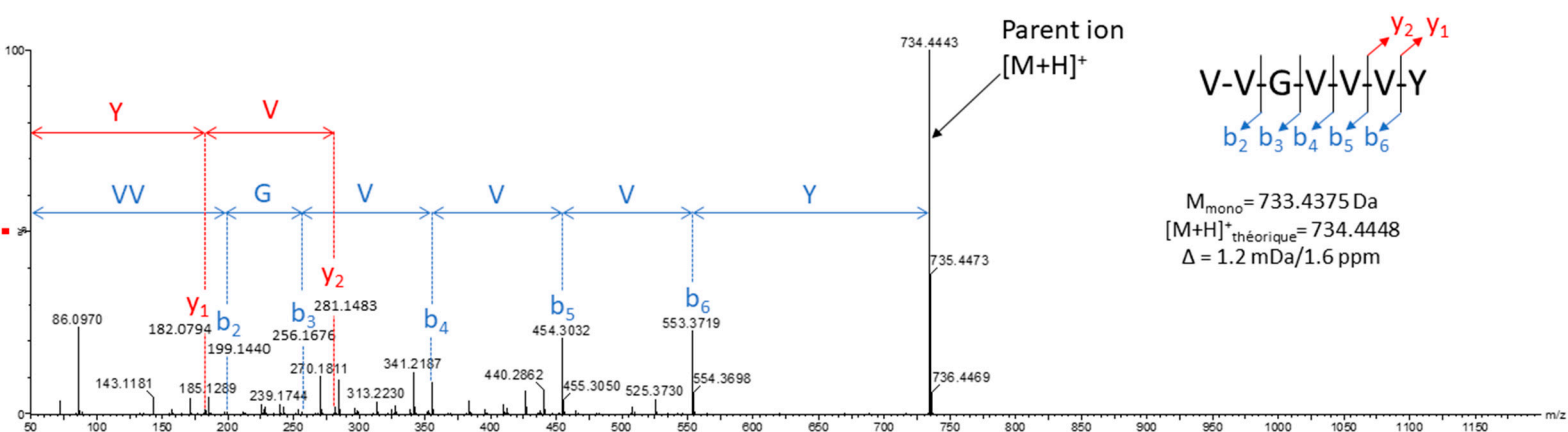
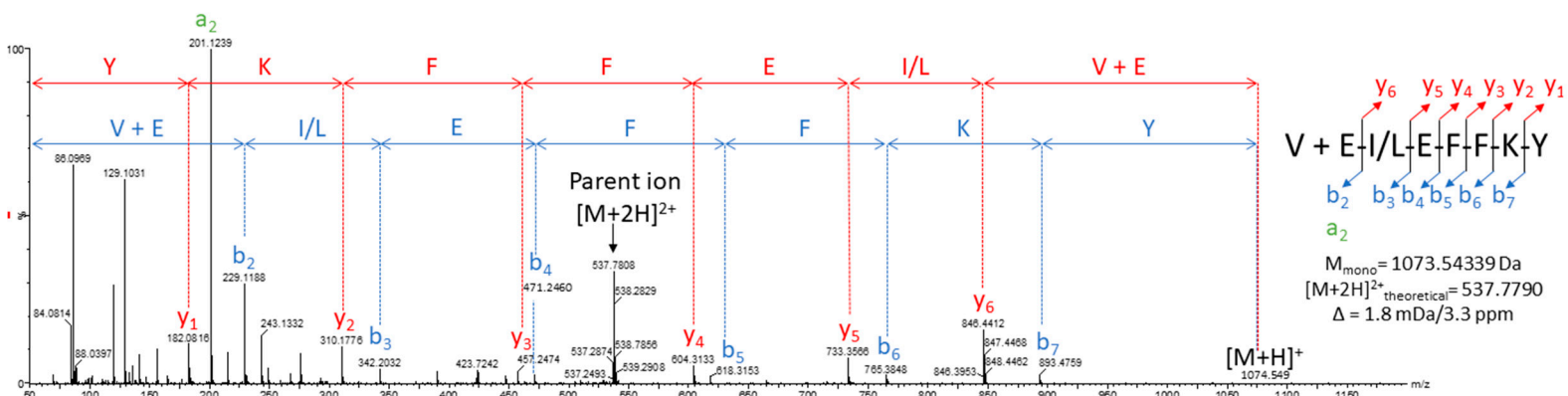


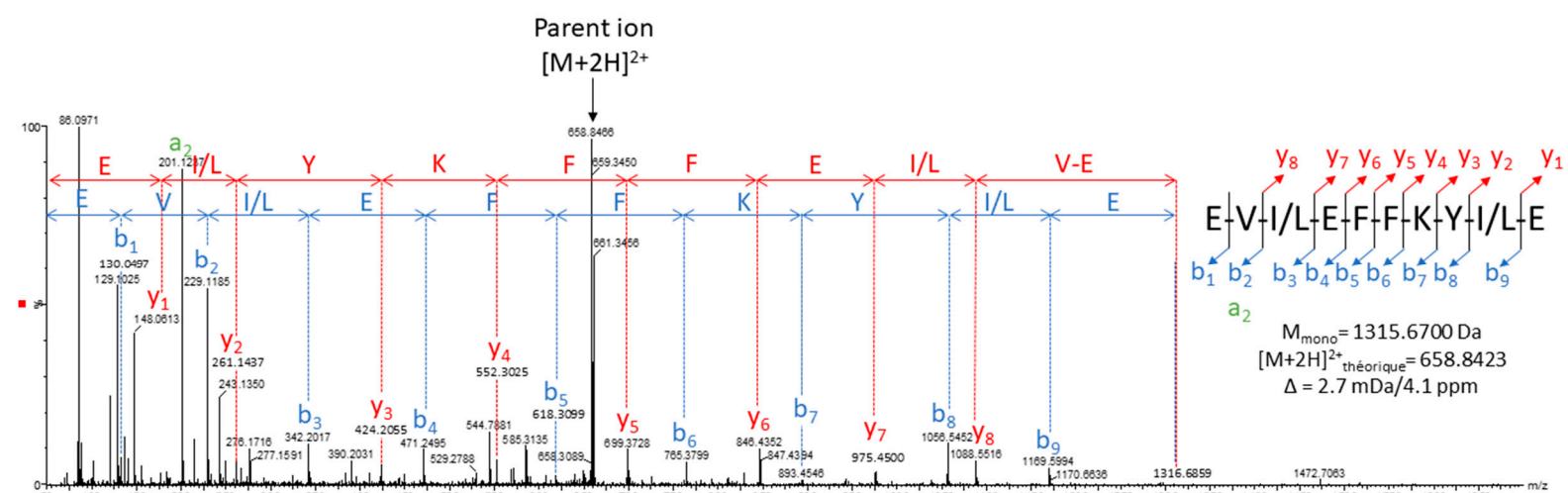
**Supplementary material - Identification of peptide inhibitors of the coronavirus 3CL pro-  
tease from *Fucus ceranoides* L. hydroalcoholic extract using a Ligand-fishing strategy**



**Figure S1** – MS/MS fragmentation profile of PEP 1 (Val-Val-Gly-Val-Val-Val-Tyr) with fragment ions from b series in blue and y series in red.



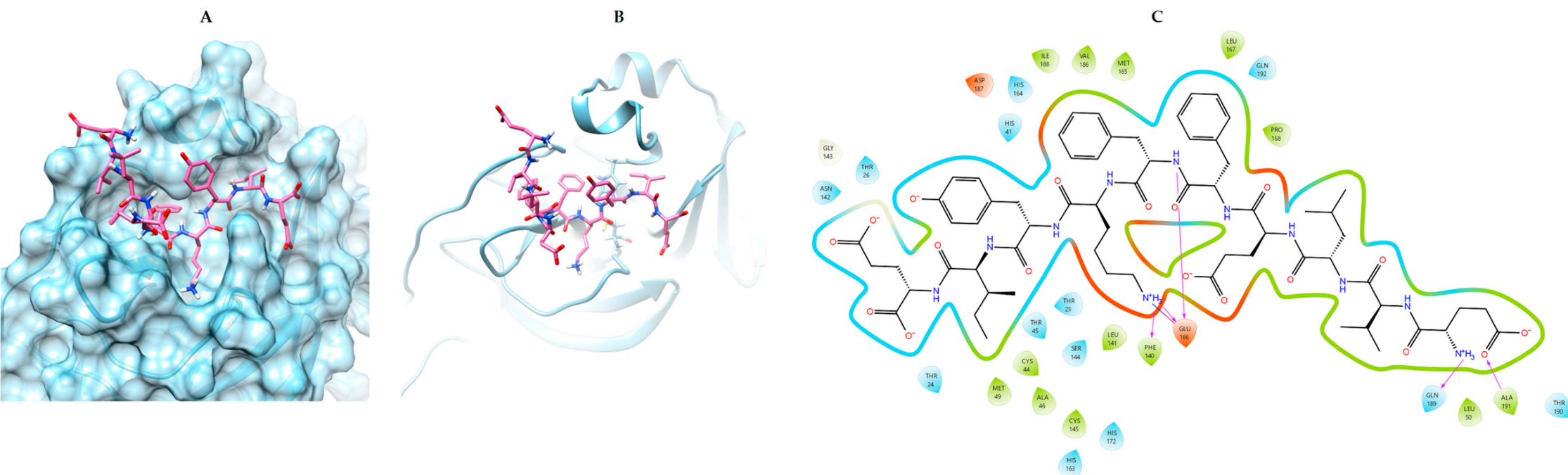
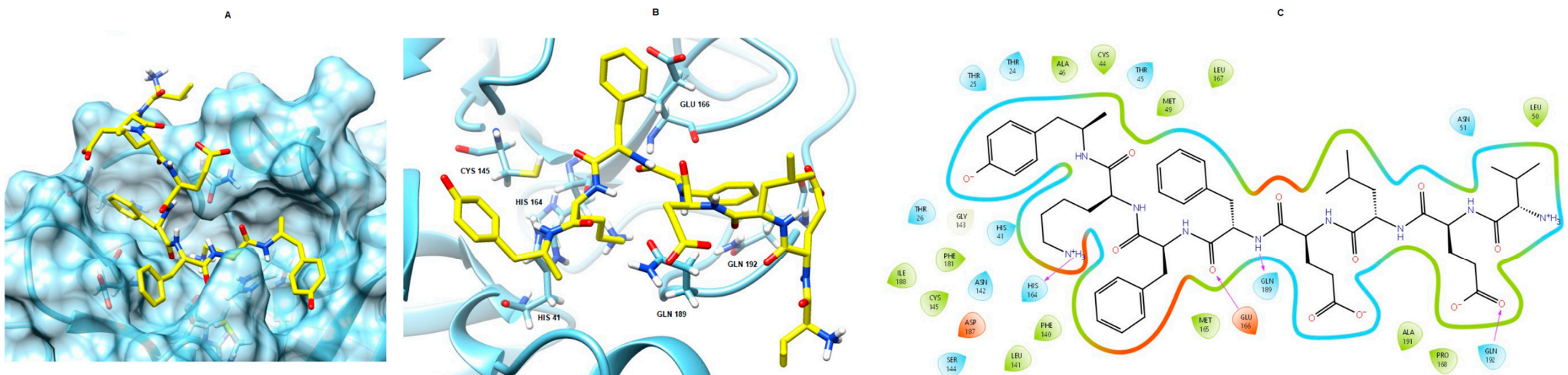
**Figure S2** – MS/MS fragmentation profile of PEP 2/PEP 3 (Val-Glu-Ile-Glu-Phe-Phe-Lys-Tyr/Val-Glu-Leu-Glu-Phe-Phe-Lys-Tyr) with fragment ions from b series in blue, y series in red, and a series in green.



**Figure S3** – MS/MS fragmentation profile of PEP 4-7 (Glu-Val-Ile-Glu-Phe-Phe-Lys-Tyr-Ile-Glu/Glu-Val-Leu-Glu-Phe-Phe-Lys-Tyr-Ile-Glu/Glu-Val-Ile-Glu-Phe-Phe-Lys-Tyr-Leu-Glu/Glu-Val-Leu-Glu-Phe-Phe-Lys-Tyr-Leu-Glu) with fragment ions from b series in blue, y series in red, and a series in green.









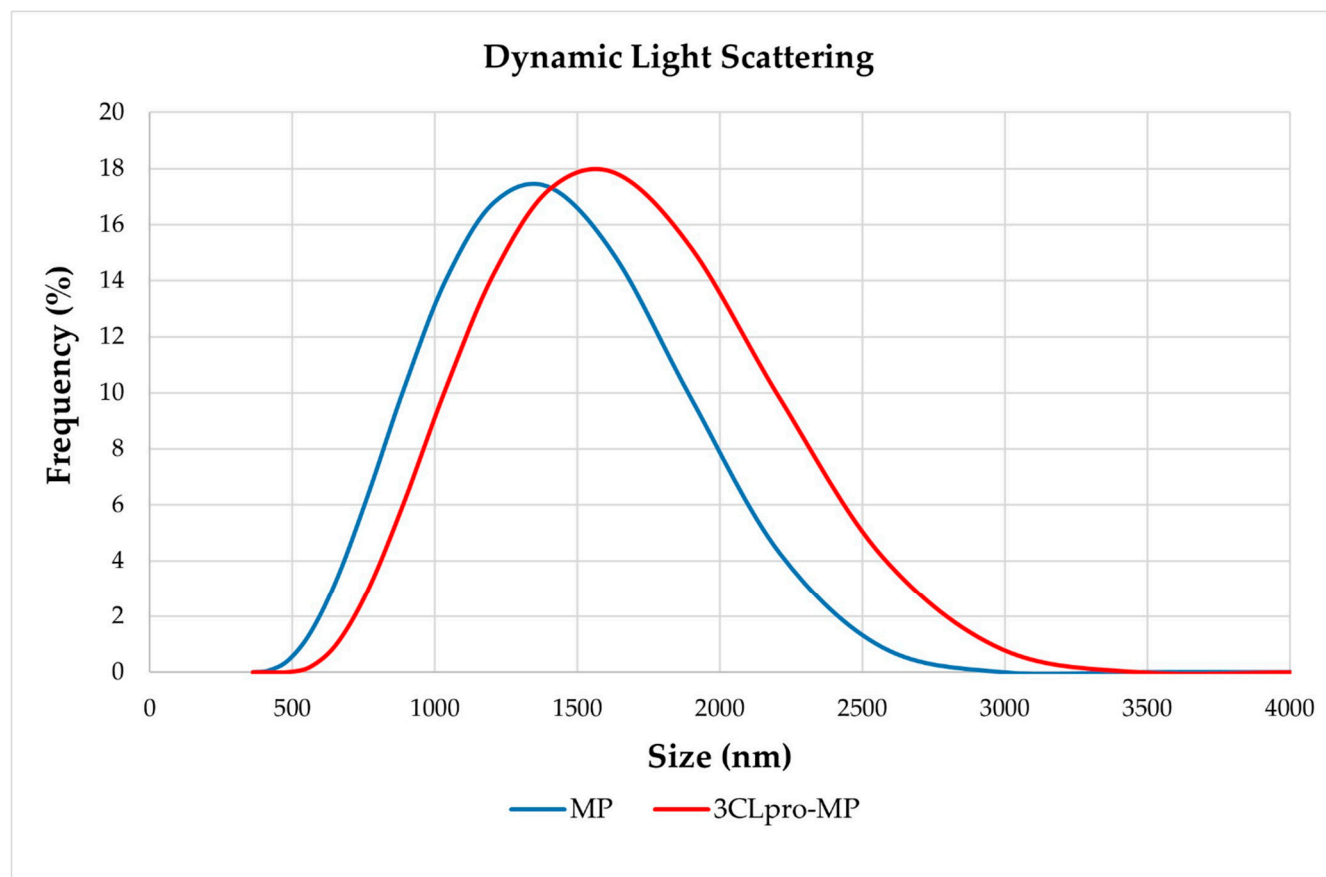


Figure S10 – Hydrodynamic size distribution of the magnetic particle alone (MP) and the magnetic particle with immobilized 3CLpro (3CLpro-MP).