

Figure S1. DEAE-sepharose Fast Flow chromatographic profiles of polysaccharide fractions from three types of seaweed. (A) *Sargassum horneri* polysaccharide (SHP) fractions, (B) *Scytosiphon lomentaria* polysaccharide (SLP) fractions, (C) *Undaria pinnatifida* polysaccharide (UPP) fractions. The collected fractions are indicated by blue arrows.

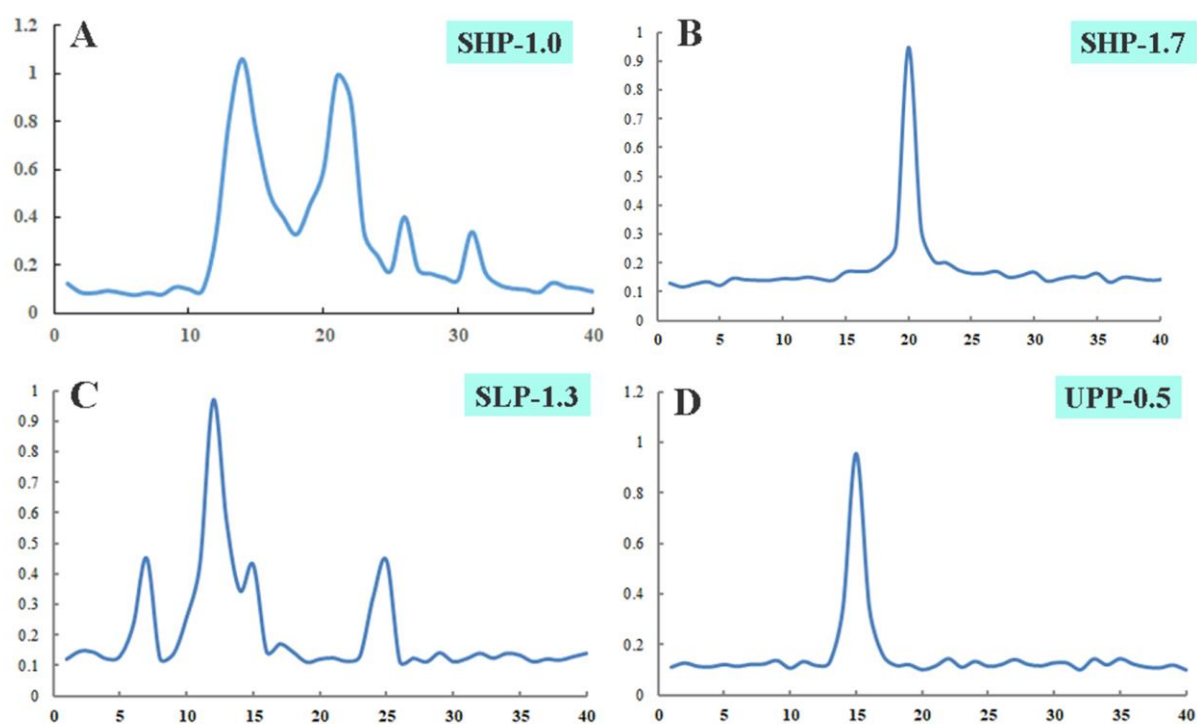


Figure S2. The elution curve of (A) SHP-1.0, (B) SHP-1.7, (C) SLP-1.3, and (D) UPP-0.5 on the Sephadex G-400 gel chromatography column.