

Supporting Information

Figure S1 HRESIMS spectrum of compound 1	2
Figure S2 ^1H NMR spectrum of compound 1 in CDCl_3 , 600 MHz.....	2
Figure S3 ^{13}C NMR spectrum of compound 1 in CDCl_3 , 150 MHz.....	3
Figure S4 DEPT 135 spectrum of 1 in CDCl_3 , 150 MHz.....	3
Figure S5 ^1H - ^1H COSY spectrum of 1 in CDCl_3 , 600 MHz.....	4
Figure S6 HSQC spectrum of 1 in CDCl_3 , 150 MHz.....	4
Figure S7 HMBC spectrum of 1 in CDCl_3 , 150 MHz.....	5
Figure S8 1D NOE spectrum of 1 in CDCl_3 , 600 MHz (H-6).....	5
Figure S9 HRESIMS spectrum of compound 2	6
Figure S10 ^1H NMR spectrum of compound 2 in CDCl_3 , 600 MHz.....	6
Figure S11 ^{13}C NMR spectrum of compound 2 in CDCl_3 , 150 MHz.....	7
Figure S12 DEPT 135 spectrum of 2 in CDCl_3 , 150 MHz.....	7
Figure S13 ^1H - ^1H COSY spectrum of 2 in CDCl_3 , 600 MHz.....	8
Figure S14 HSQC spectrum of 2 in CDCl_3 , 150 MHz.....	8
Figure S15 HMBC spectrum of 2 in CDCl_3 , 150 MHz.....	9
Figure S16 1D NOE spectrum of 2 in CDCl_3 , 600 MHz (H-6).....	9
Figure S17 1D NOE spectrum of 2 in CDCl_3 , 600 MHz (H-10).....	10
Figure S18 HRESIMS spectrum of compound 3	10
Figure S19 ^1H NMR spectrum of compound 3 in CDCl_3 , 600 MHz.....	11
Figure S20 ^{13}C NMR spectrum of compound 3 in CDCl_3 , 150 MHz.....	11
Figure S21 DEPT 135 spectrum of 3 in CDCl_3 , 150 MHz.....	12
Figure S22 ^1H - ^1H COSY spectrum of 3 in CDCl_3 , 600 MHz.....	12
Figure S23 HSQC spectrum of 3 in CDCl_3 , 150 MHz.....	13
Figure S24 HMBC spectrum of 3 in CDCl_3 , 150 MHz.....	13
Figure S25 1D NOE spectrum of 3 in CDCl_3 , 600 MHz (H-6).....	14
Figure S26 1D NOE spectrum of 3 in CDCl_3 , 600 MHz (H-10).....	14
Figure S27 HRESIMS spectrum of compound 4	15
Figure S28 ^1H NMR spectrum of compound 4 in CDCl_3 , 600 MHz.....	15
Figure S29 ^{13}C NMR spectrum of compound 4 in CDCl_3 , 150 MHz.....	16
Figure S30 DEPT 135 spectrum of 4 in CDCl_3 , 150 MHz.....	16
Figure S31 ^1H - ^1H COSY spectrum of 4 in CDCl_3 , 600 MHz.....	17
Figure S32 HSQC spectrum of 4 in CDCl_3 , 150 MHz.....	17
Figure S33 HMBC spectrum of 4 in CDCl_3 , 150 MHz.....	18
Figure S34 1D NOE spectrum of 4 in CDCl_3 , 600 MHz (H-6).....	18
Figure S35 1D NOE spectrum of 4 in CDCl_3 , 600 MHz (H-10).....	19
Figure S36 The experimental ECD spectrum of 1	19
Figure S37 The experimental ECD spectrum of 2	20

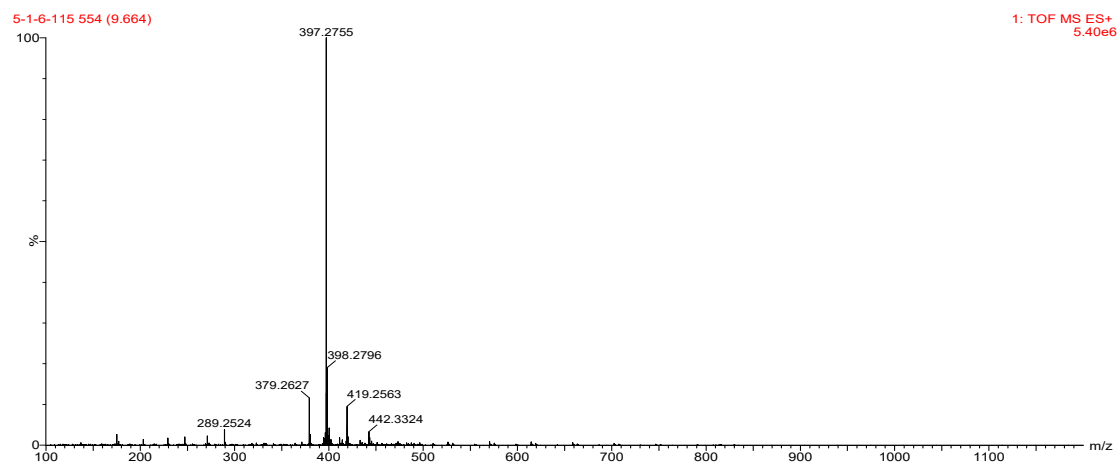


Figure S1 HRESIMS spectrum of compound **1**

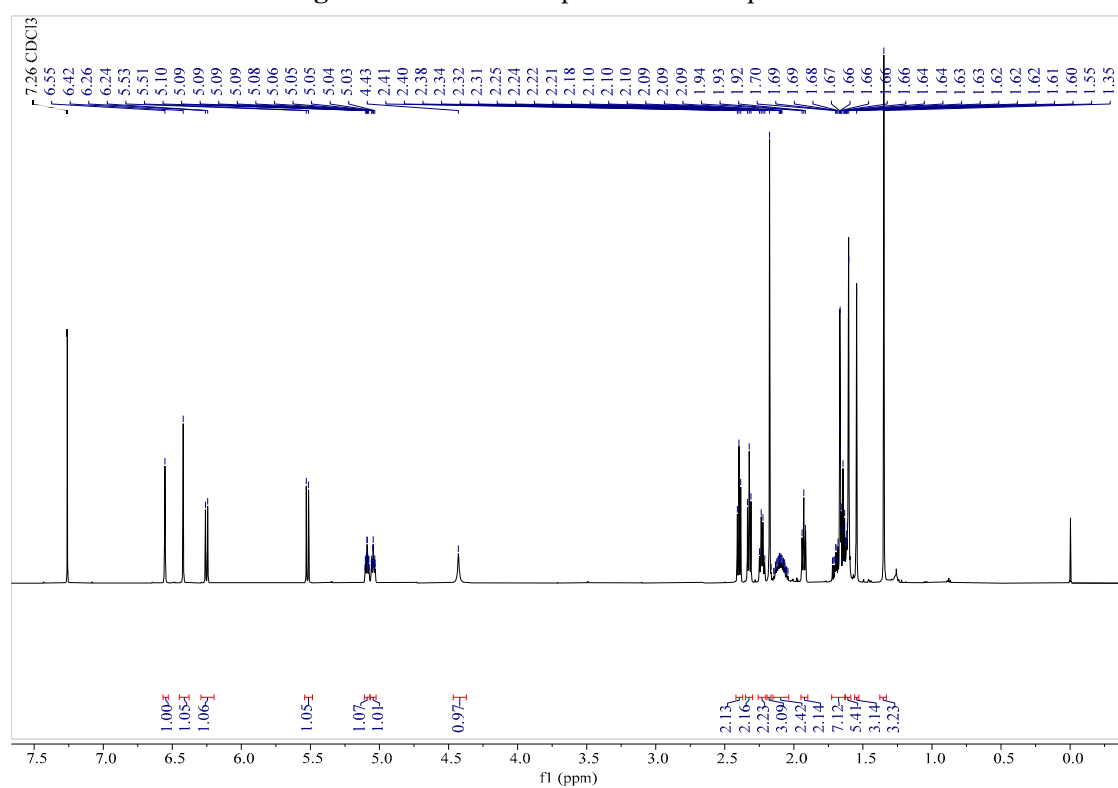


Figure S2 ¹H NMR spectrum of compound **1** in CDCl₃, 600 MHz

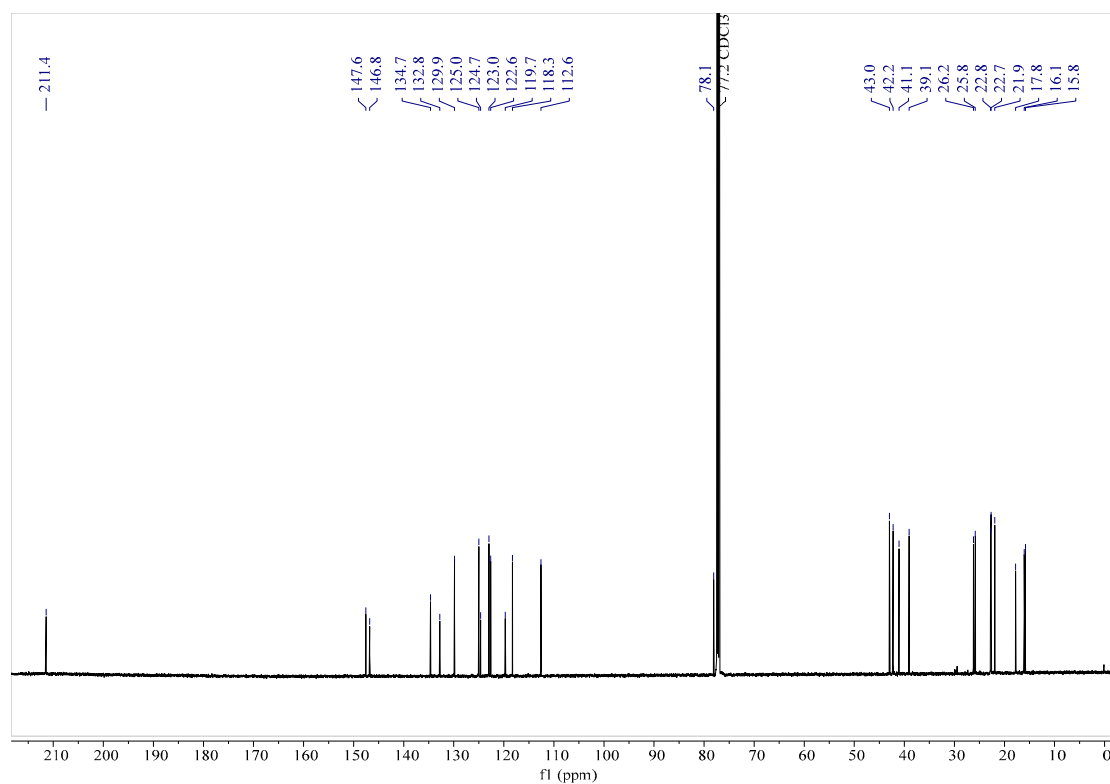


Figure S3 ¹³C NMR spectrum of compound **1** in CDCl₃, 150 MHz

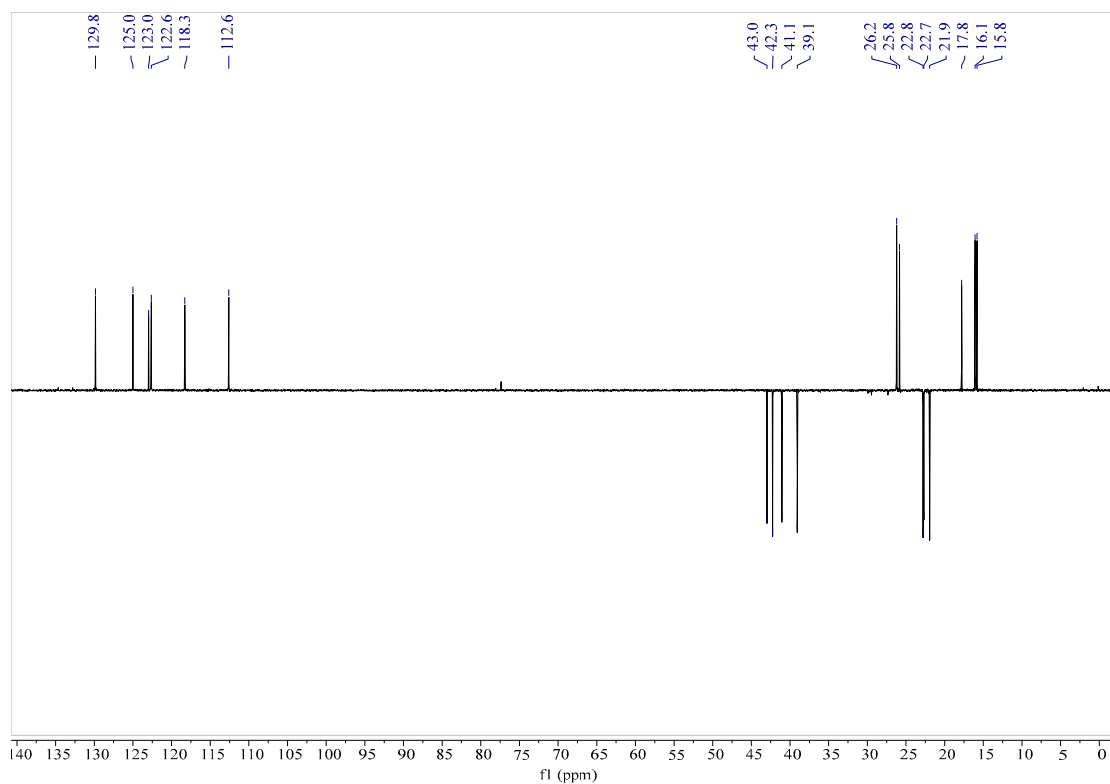


Figure S4 DEPT 135 spectrum of **1** in CDCl₃, 150 MHz

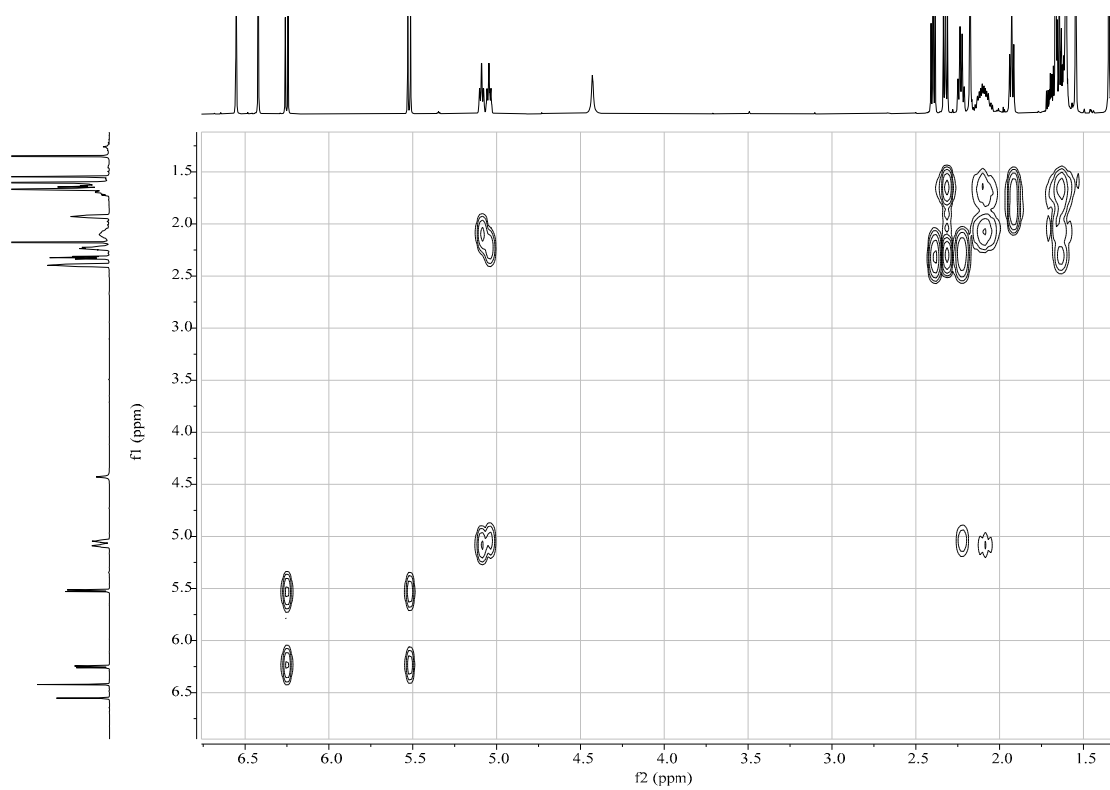


Figure S5 ^1H - ^1H COSY spectrum of **1** in CDCl_3 , 600 MHz

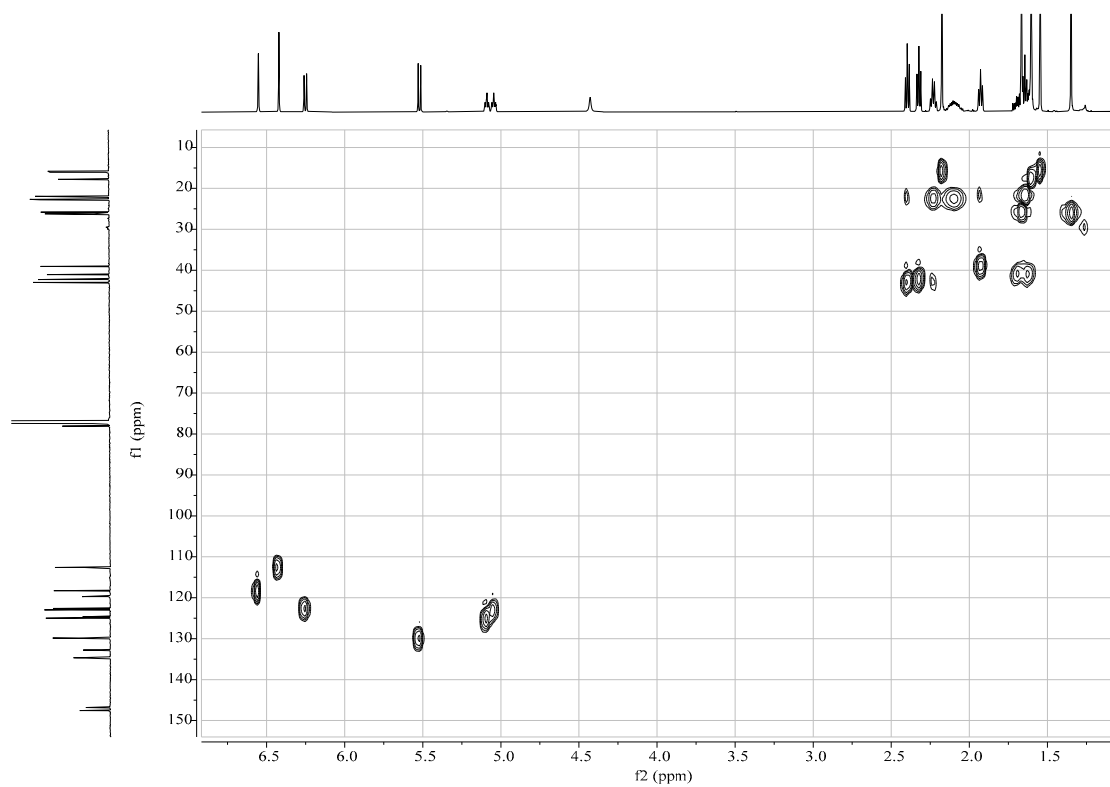


Figure S6 HSQC spectrum of **1** in CDCl_3 , 150 MHz

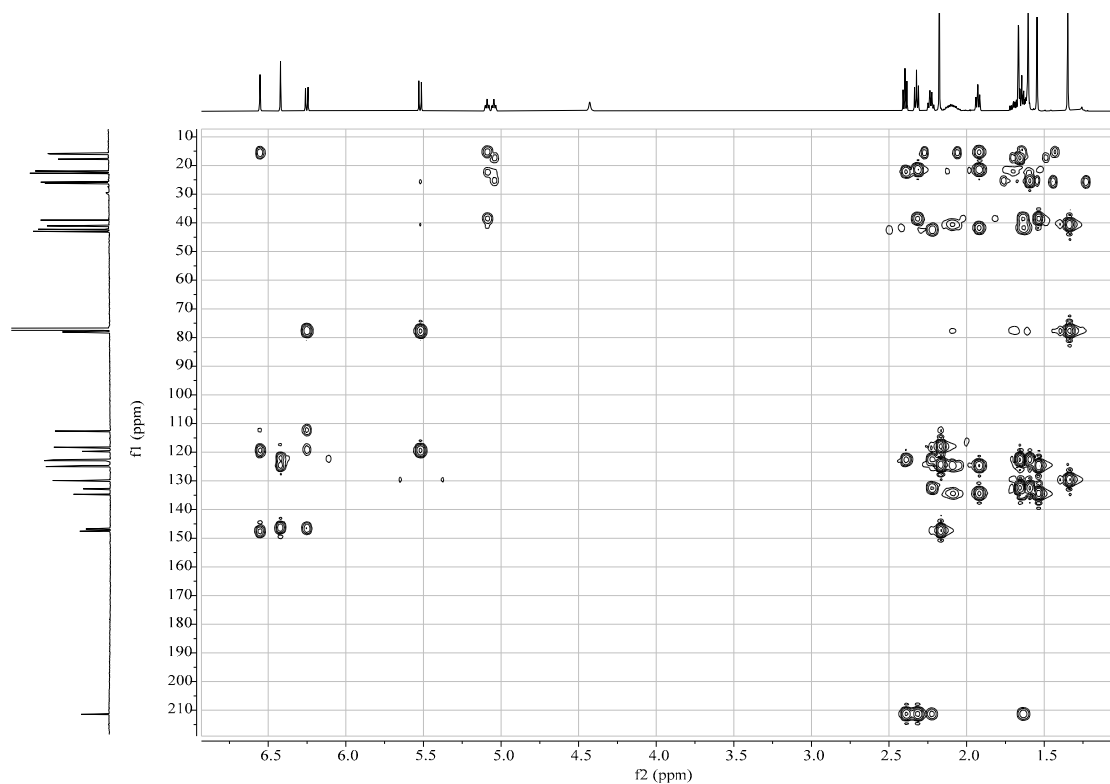


Figure S7 HMBC spectrum of **1** in CDCl_3 , 150 MHz

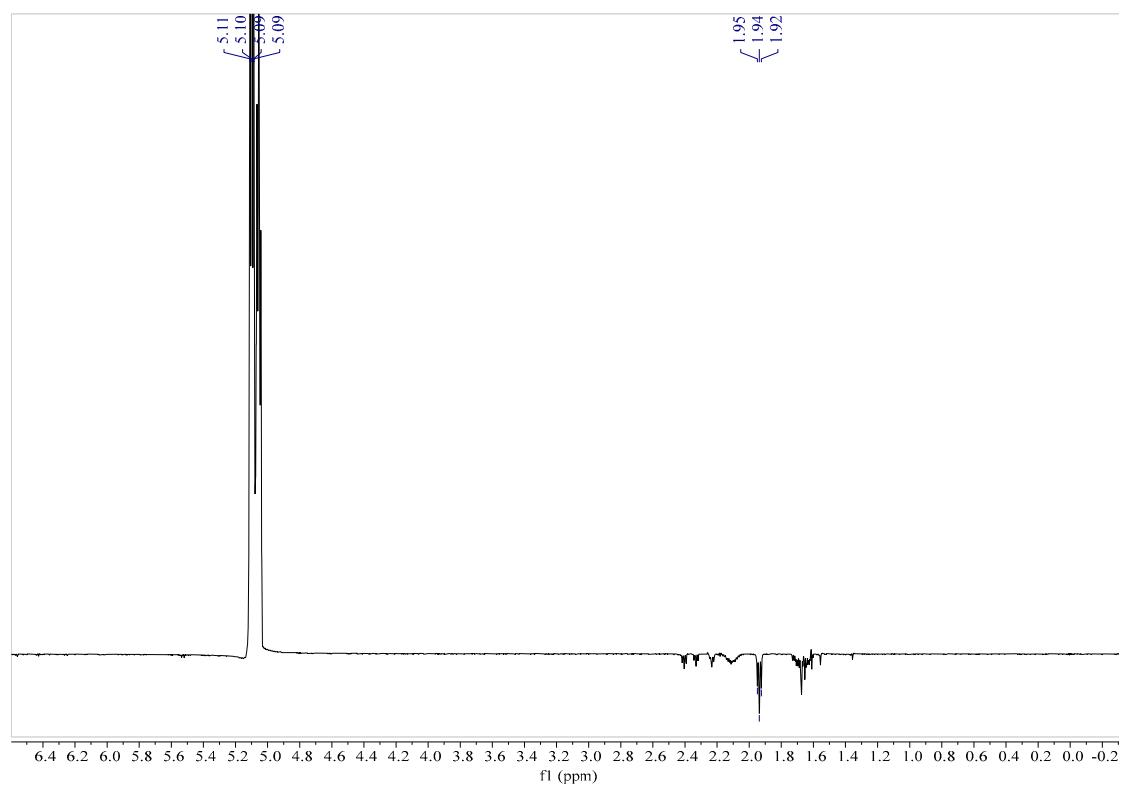


Figure S8 1D NOE spectrum of **1** in CDCl_3 , 600 MHz (H-6)

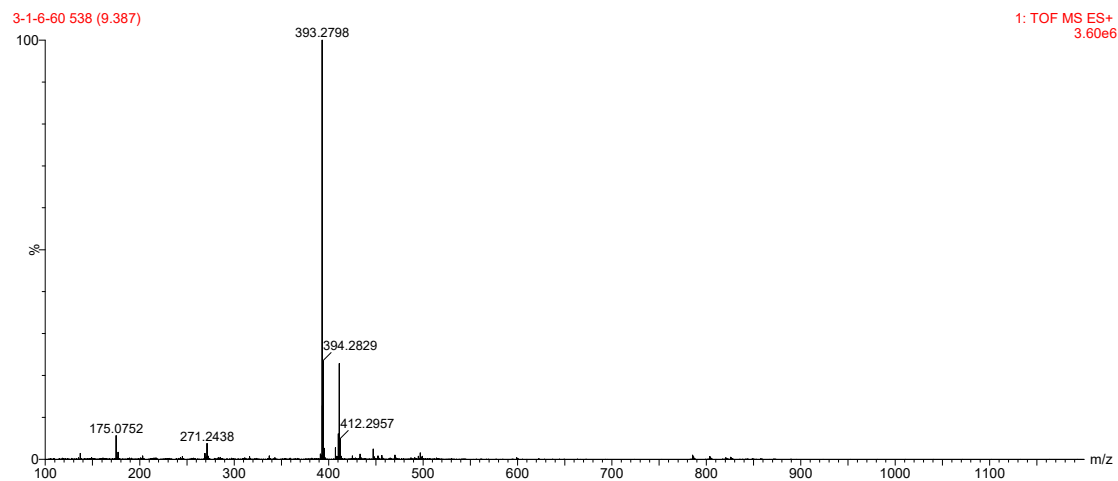


Figure S9 HRESIMS spectrum of compound **2**

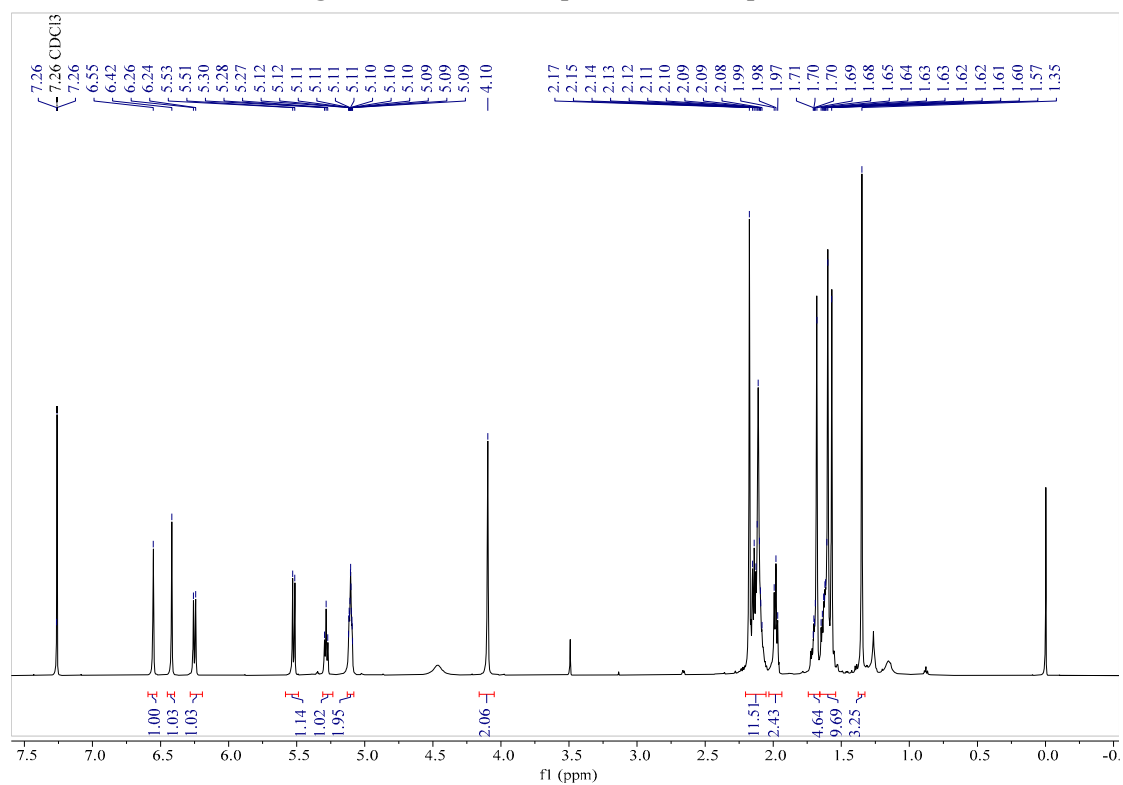


Figure S10 ¹H NMR spectrum of compound **2** in CDCl₃, 600 MHz

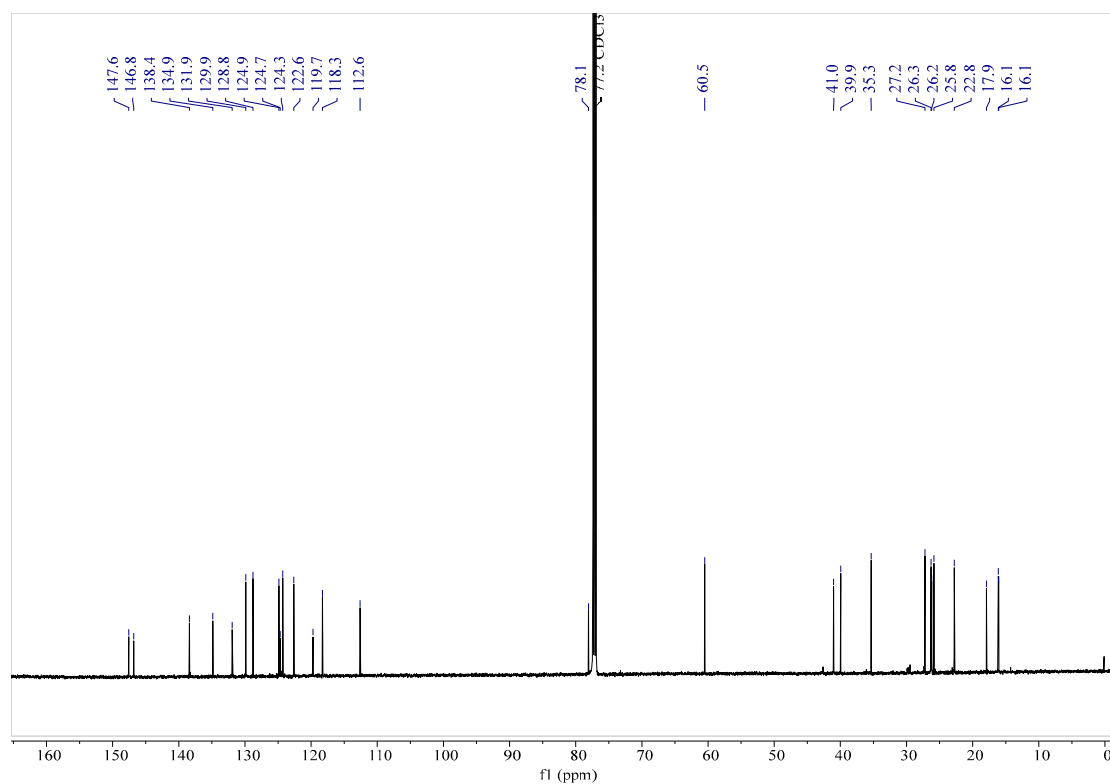


Figure S11 ¹³C NMR spectrum of compound **2** in CDCl₃, 150 MHz

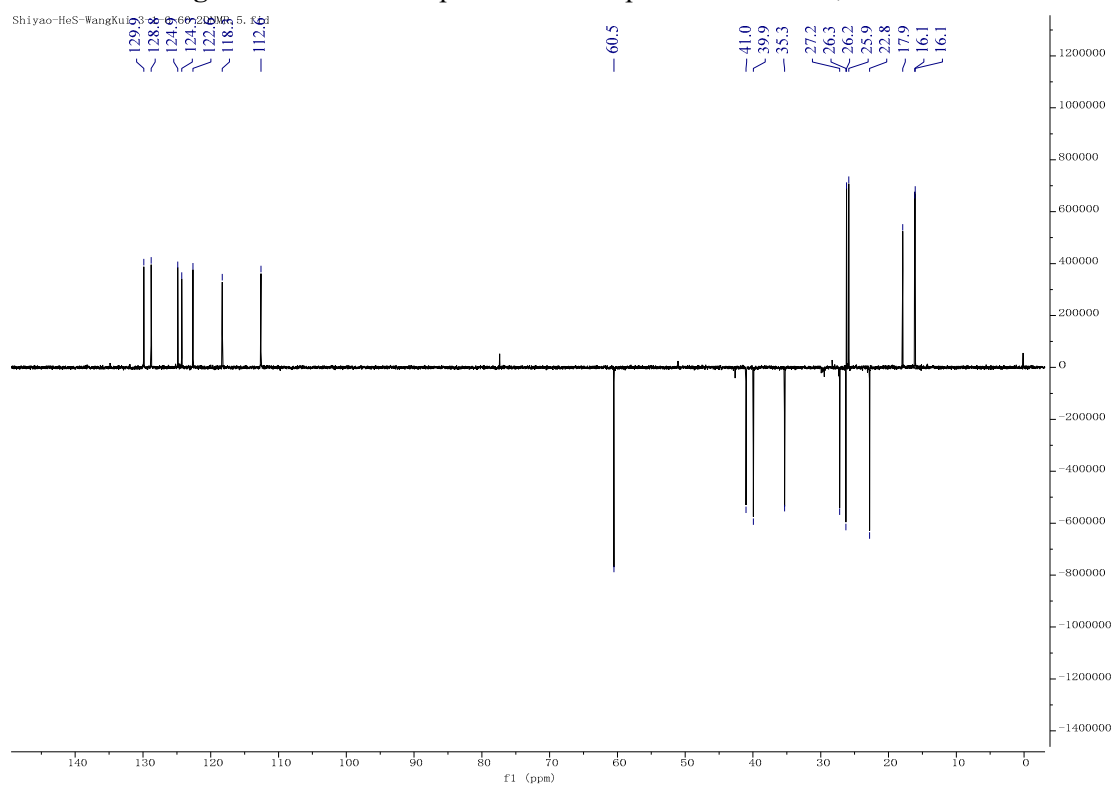


Figure S12 DEPT 135 spectrum of **2** in CDCl₃, 150 MHz

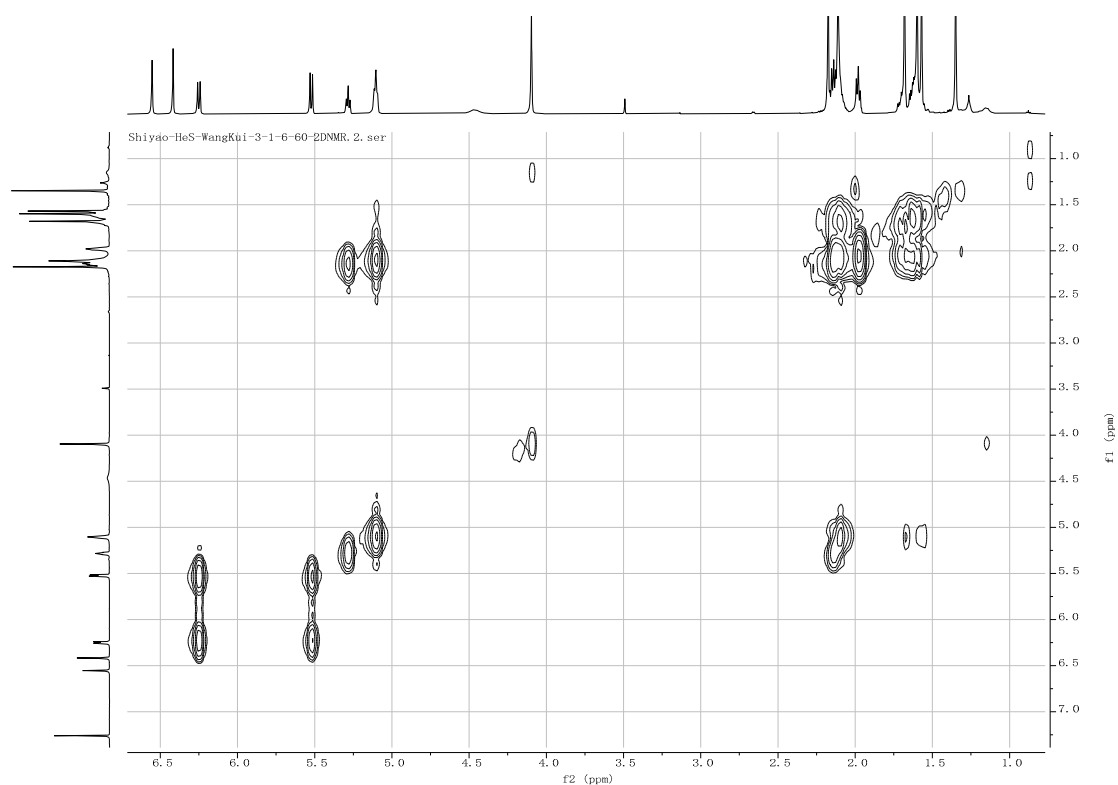


Figure S13 ^1H - ^1H COSY spectrum of **2** in CDCl_3 , 600 MHz

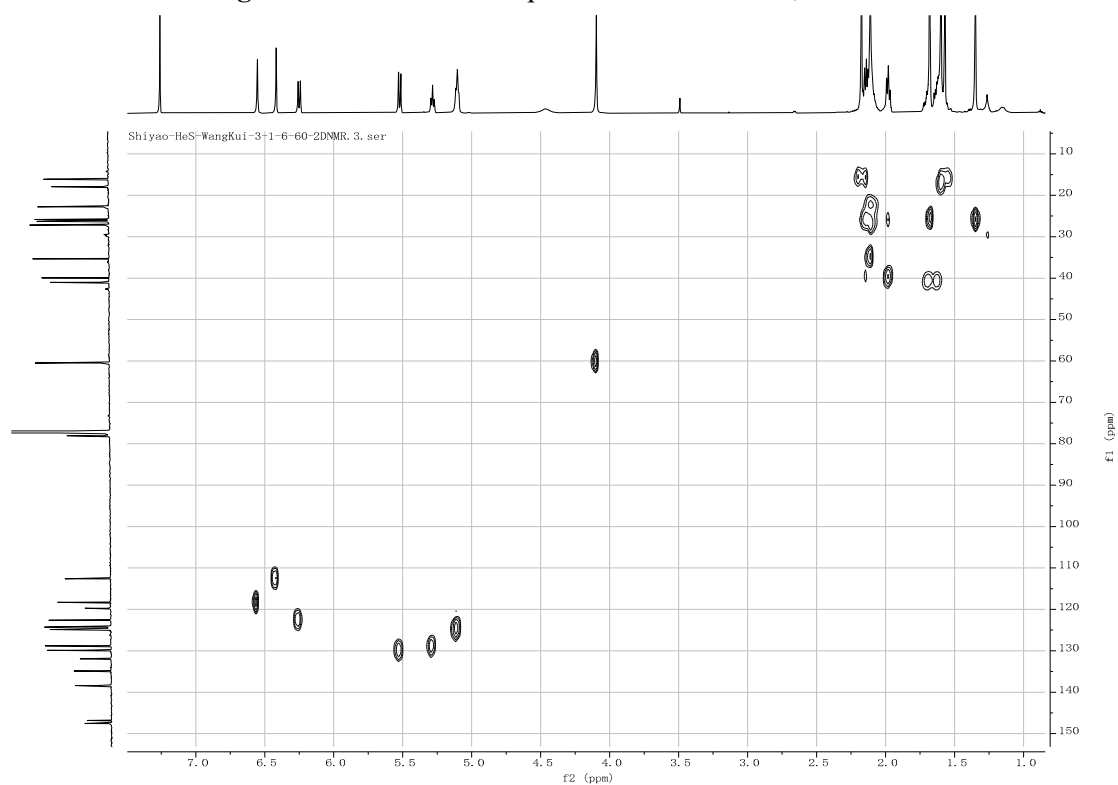


Figure S14 HSQC spectrum of **2** in CDCl_3 , 150 MHz

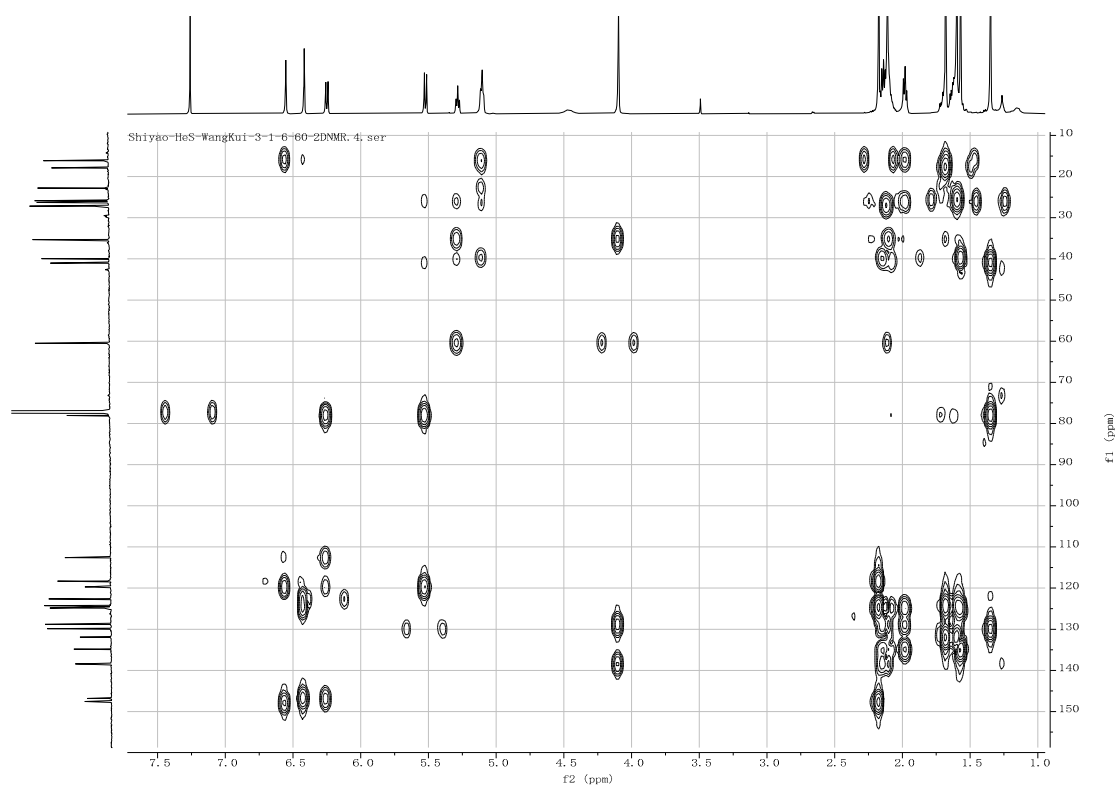


Figure S15 HMBC spectrum of **2** in CDCl_3 , 150 MHz

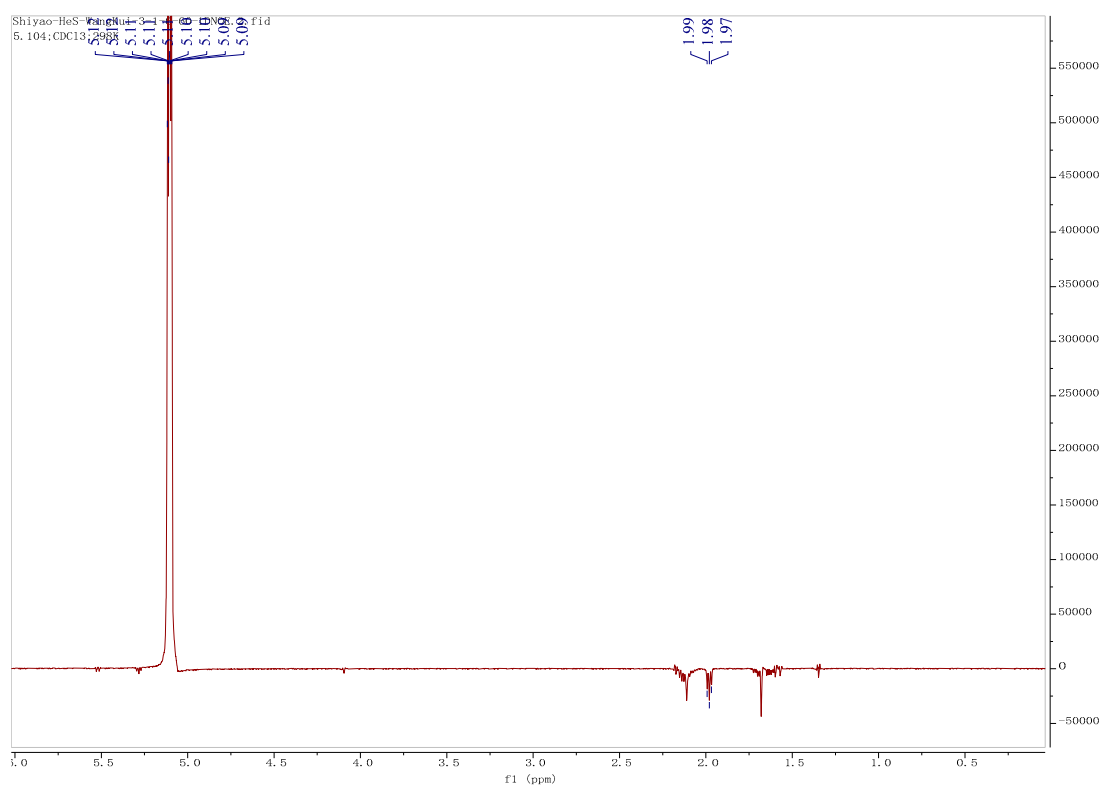


Figure S16 1D NOE spectrum of **2** in CDCl_3 , 600 MHz (H-6)

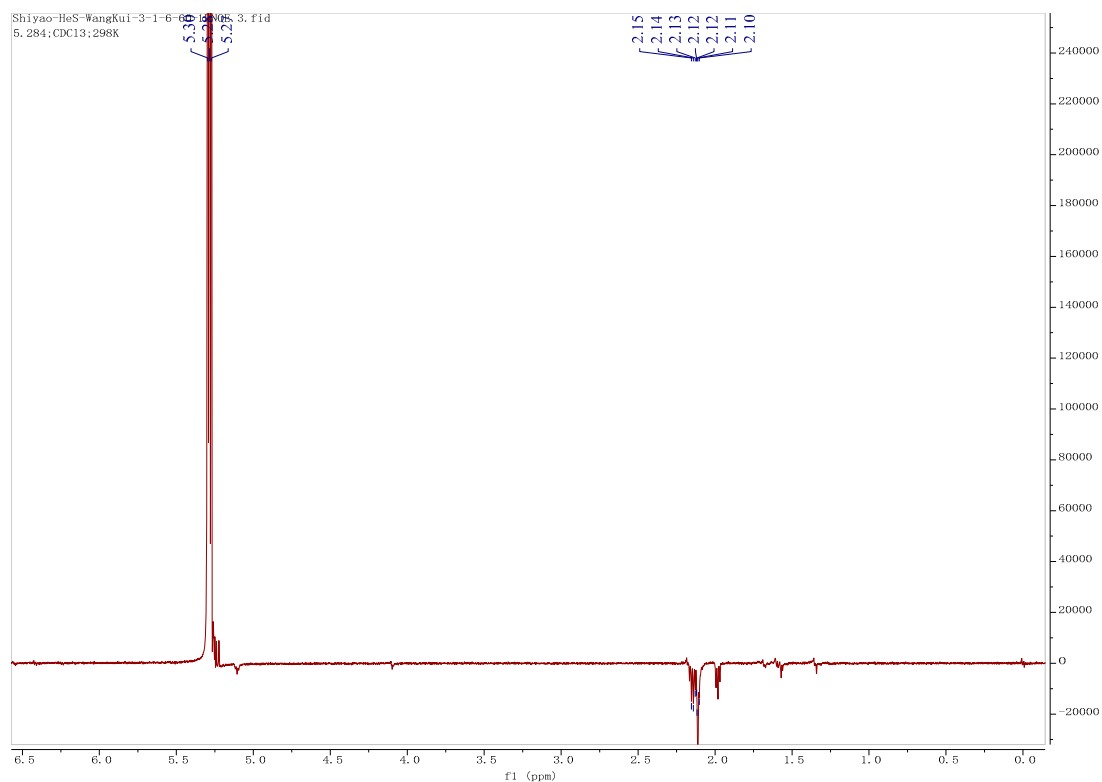


Figure S17 1D NOE spectrum of **2** in CDCl₃, 600 MHz (H-10)

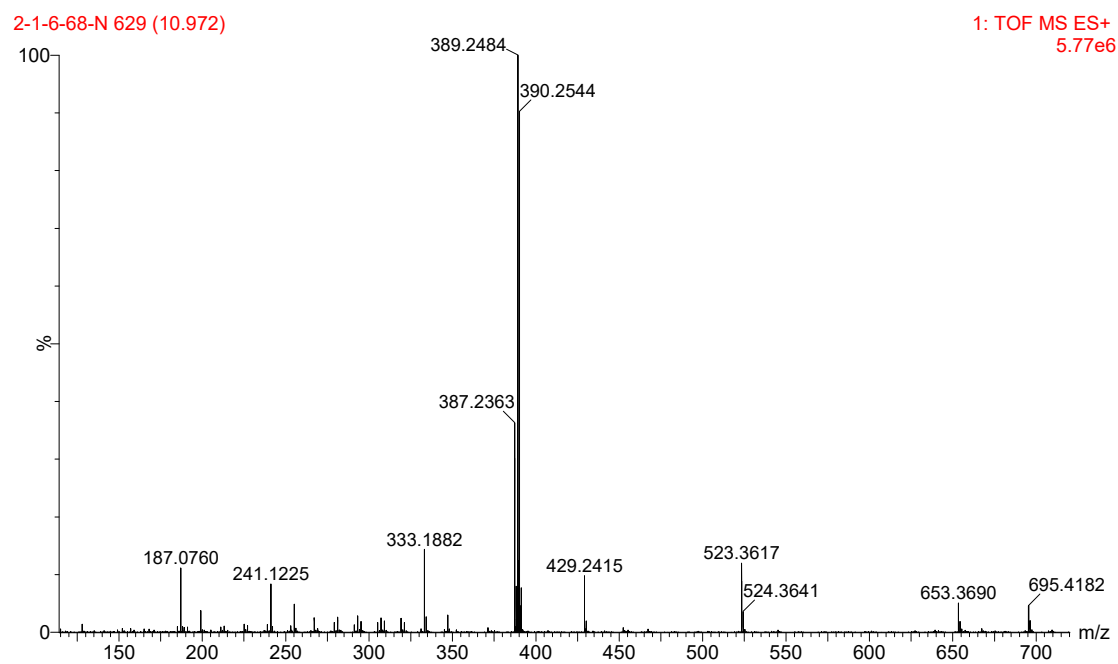


Figure S18 HRESIMS spectrum of compound **3**

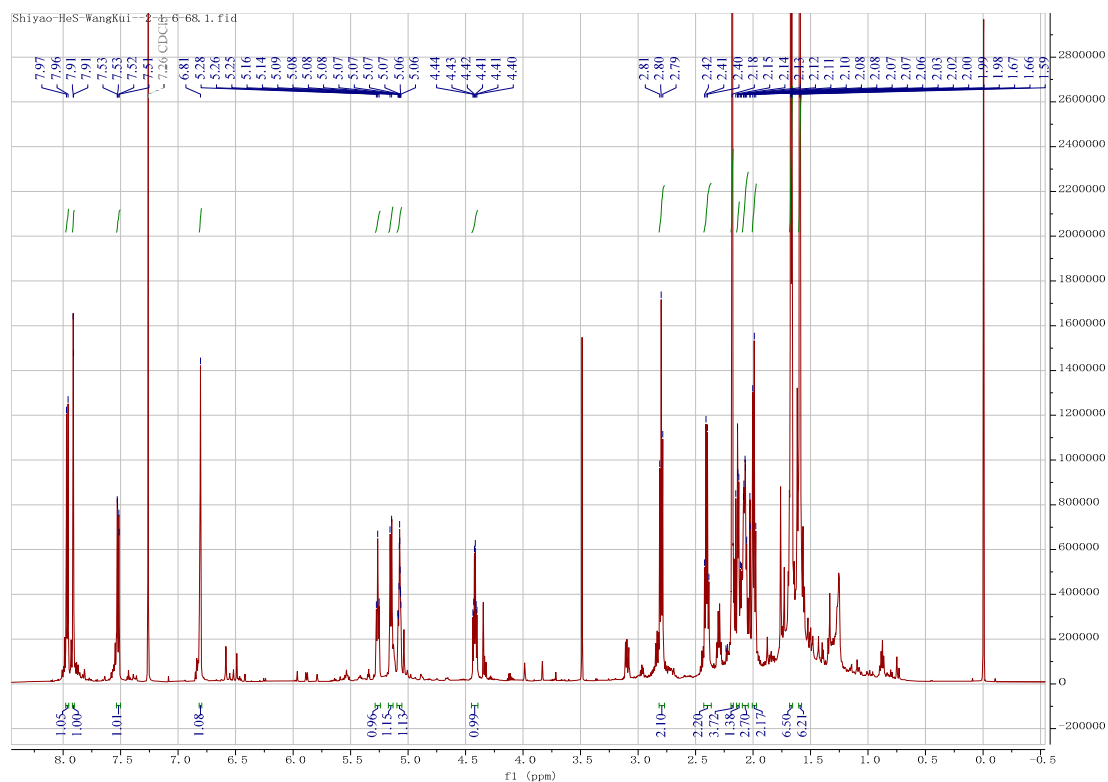


Figure S19 ^1H NMR spectrum of compound **3** in CDCl_3 , 600 MHz

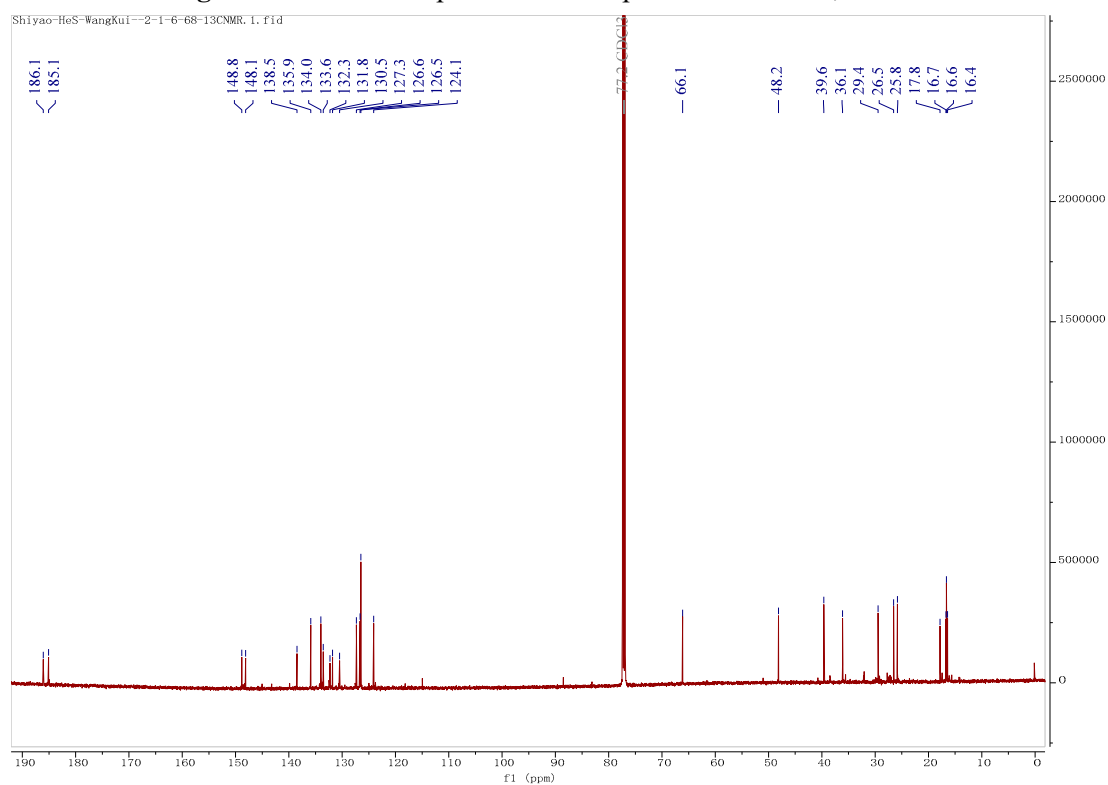


Figure S20 ^{13}C NMR spectrum of compound **3** in CDCl_3 , 150 MHz

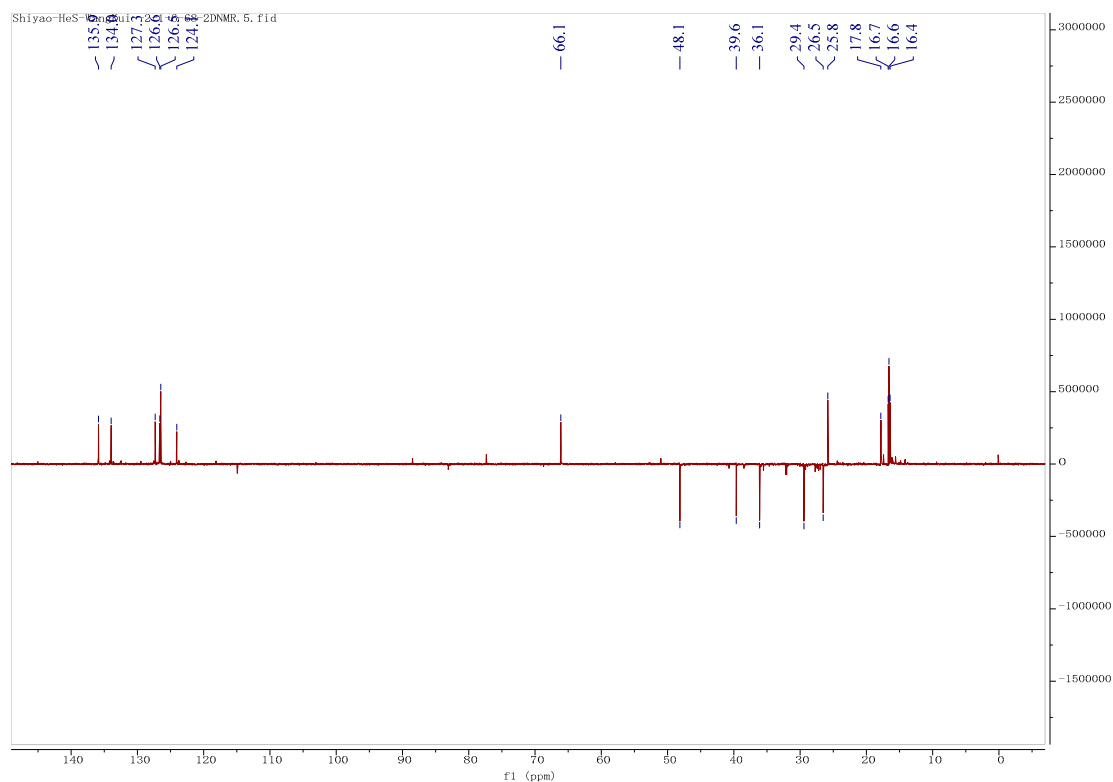


Figure S21 DEPT 135 spectrum of **3** in CDCl_3 , 150 MHz

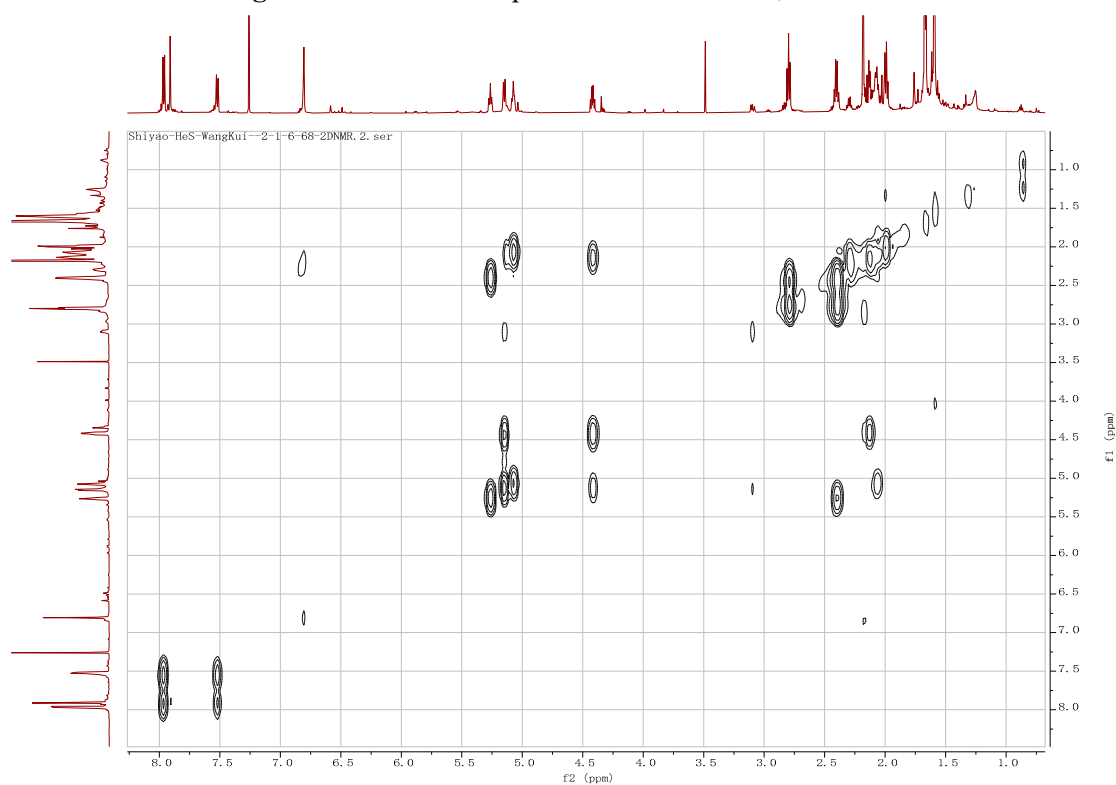


Figure S22 ^1H - ^1H COSY spectrum of **3** in CDCl_3 , 600 MHz

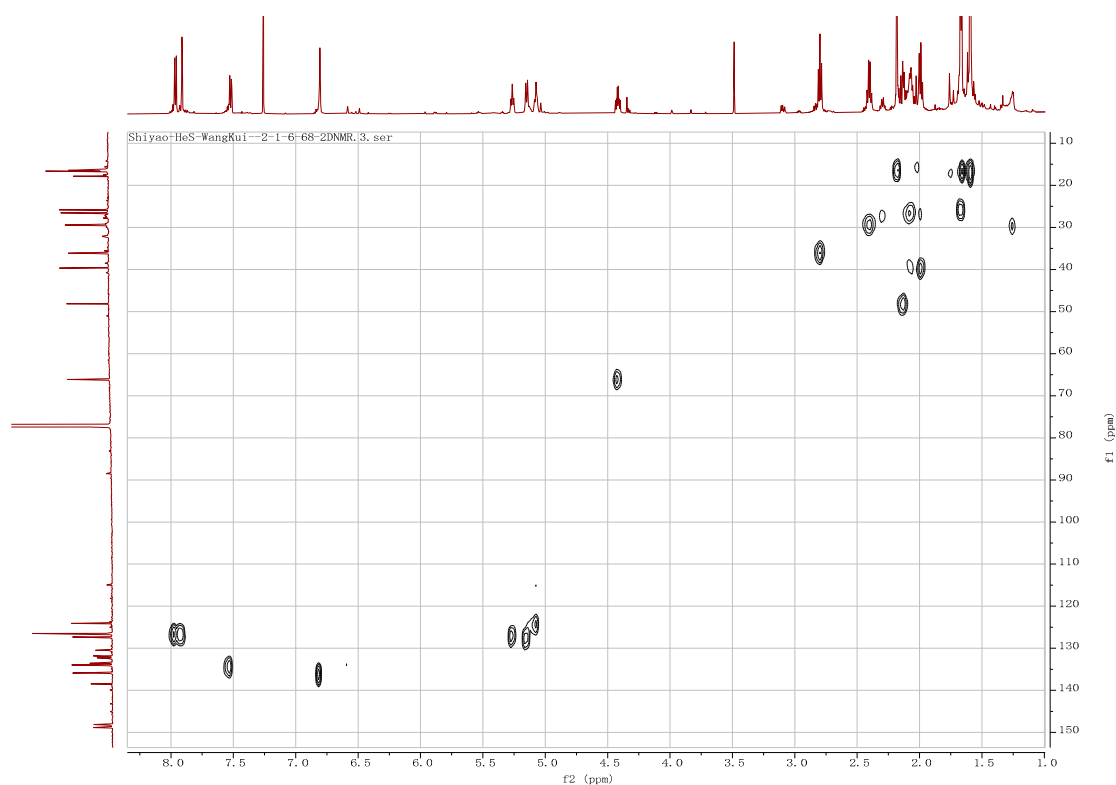


Figure S23 HSQC spectrum of **3** in CDCl_3 , 150 MHz

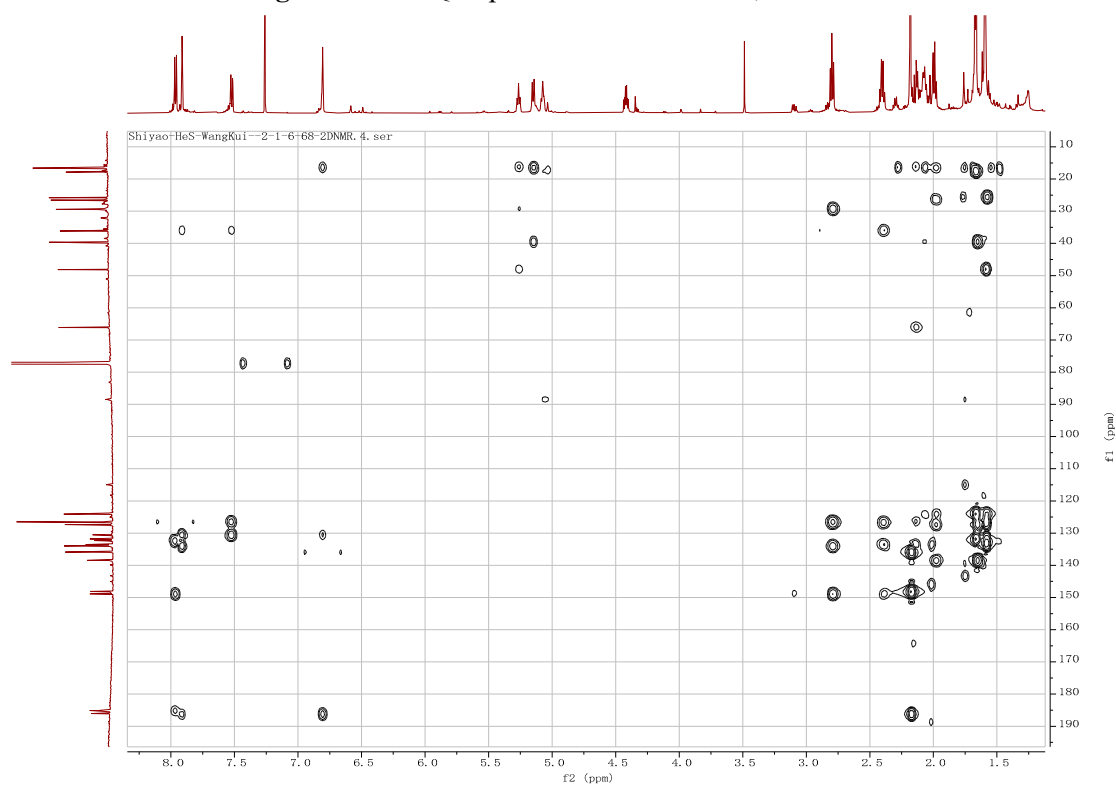


Figure S24 HMBC spectrum of **3** in CDCl_3 , 150 MHz

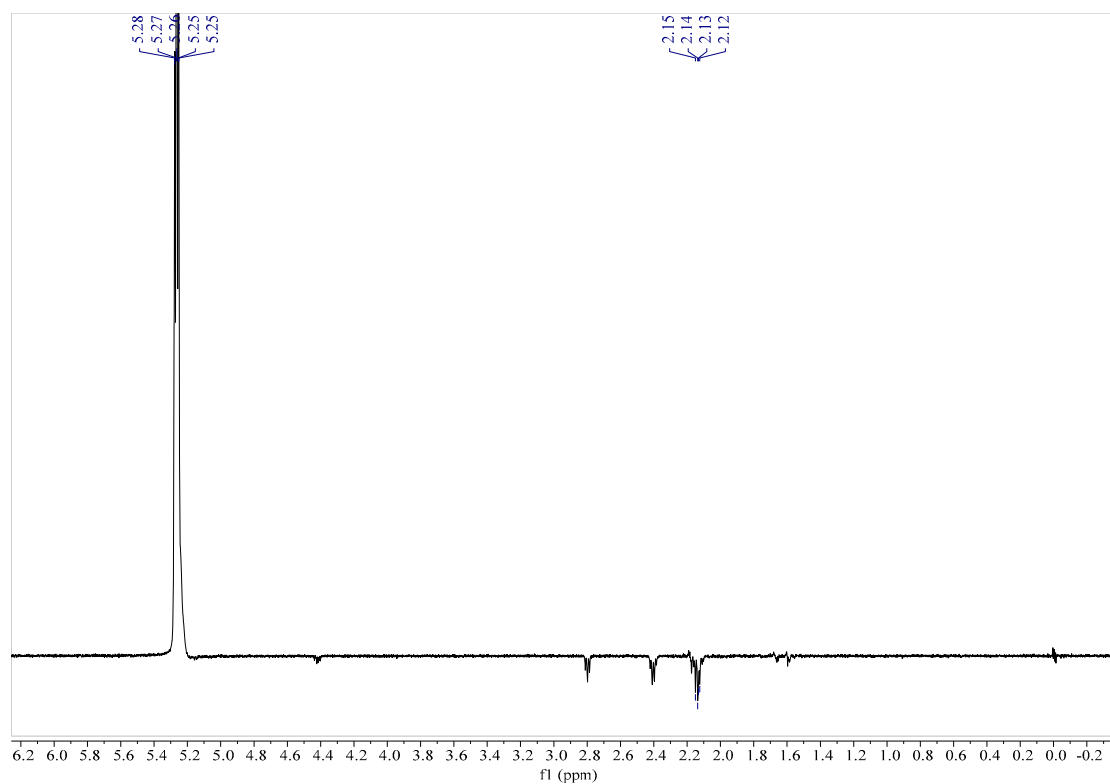


Figure S25 1D NOE spectrum of **3** in CDCl₃, 600 MHz (H-6)

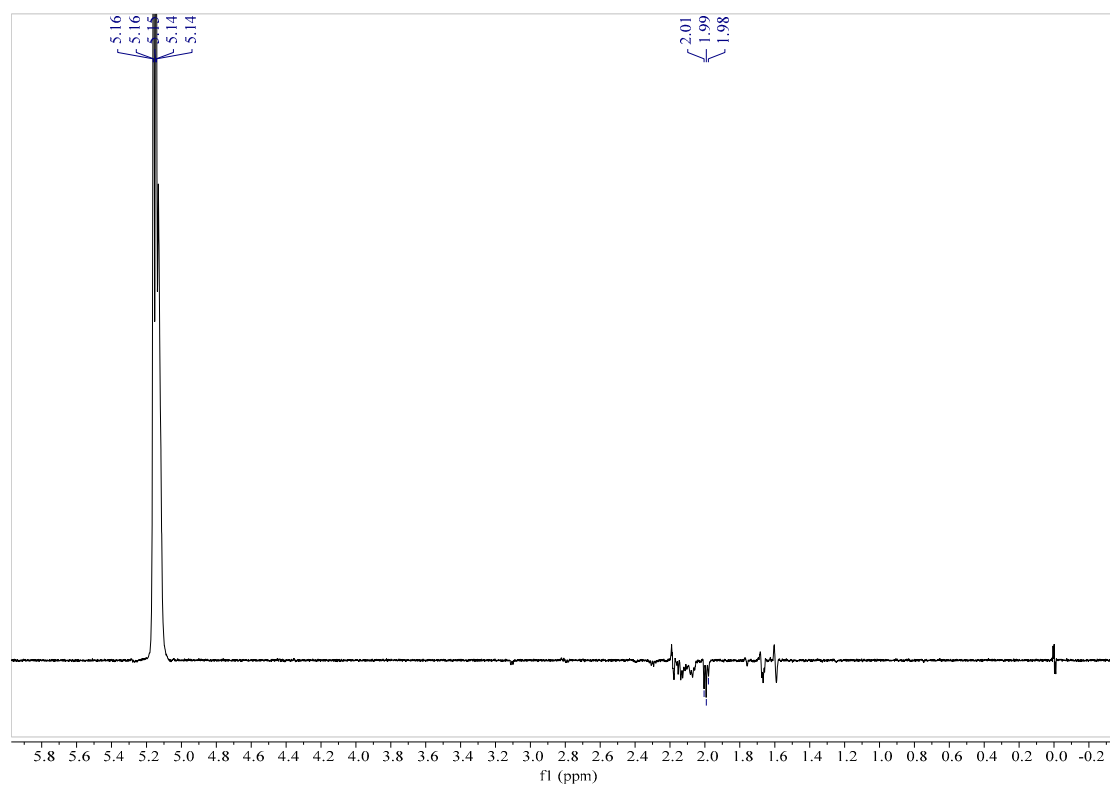


Figure S26 1D NOE spectrum of **3** in CDCl₃, 600 MHz (H-10)

2-1-7-45 #4622 RT: 19.93 AV: 1 NL: 1.63E7
T: FTMS + p ESI Full ms [100.0000-1500.0000]

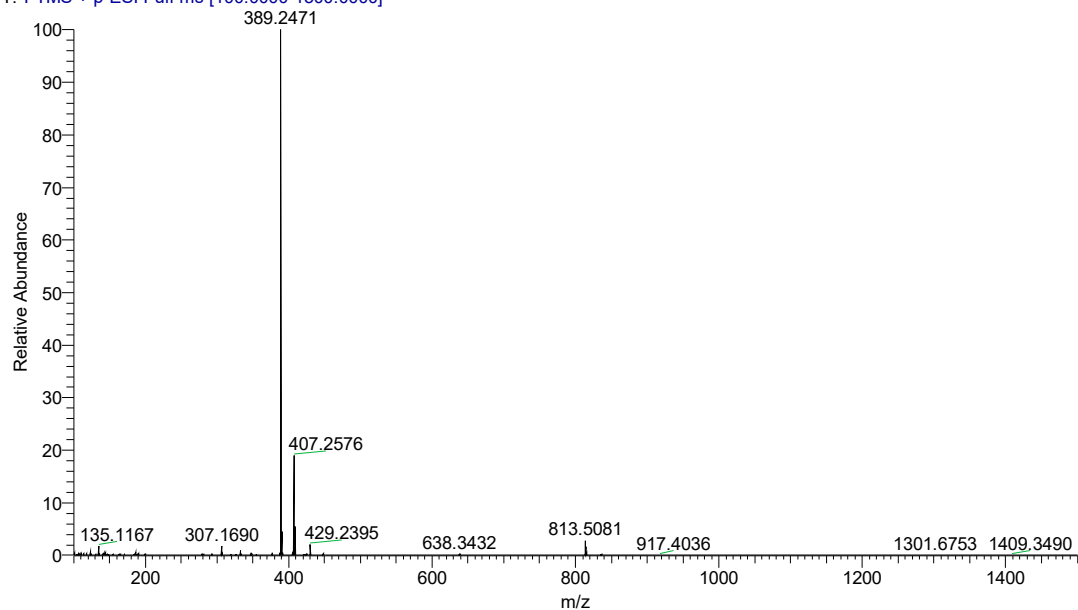


Figure S27 HRESIMS spectrum of compound **4**

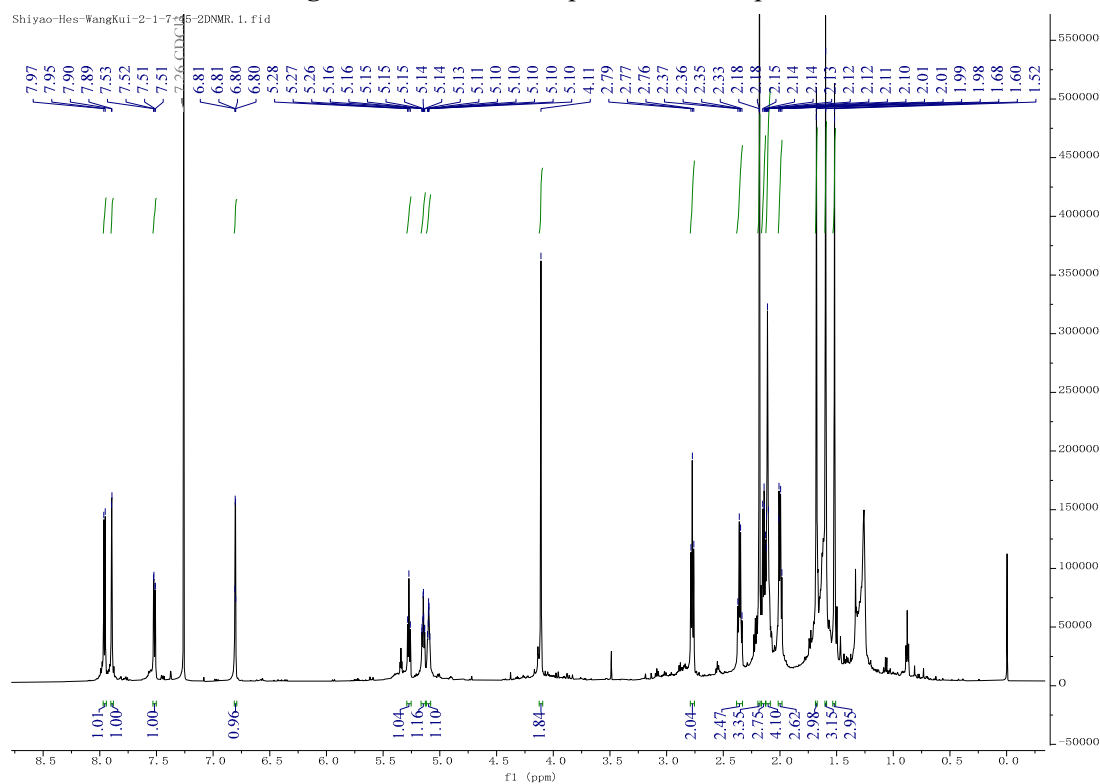


Figure S28 ^1H NMR spectrum of compound **4** in CDCl_3 , 600 MHz

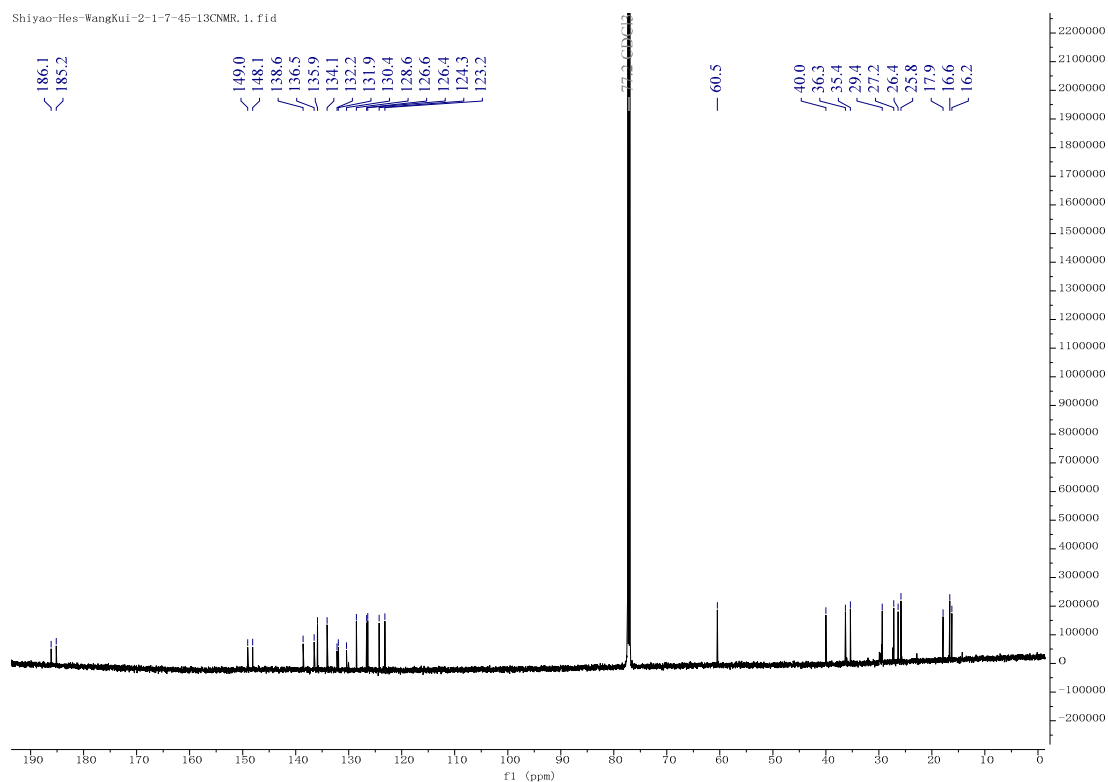


Figure S29 ¹³C NMR spectrum of compound **4** in CDCl₃, 150 MHz

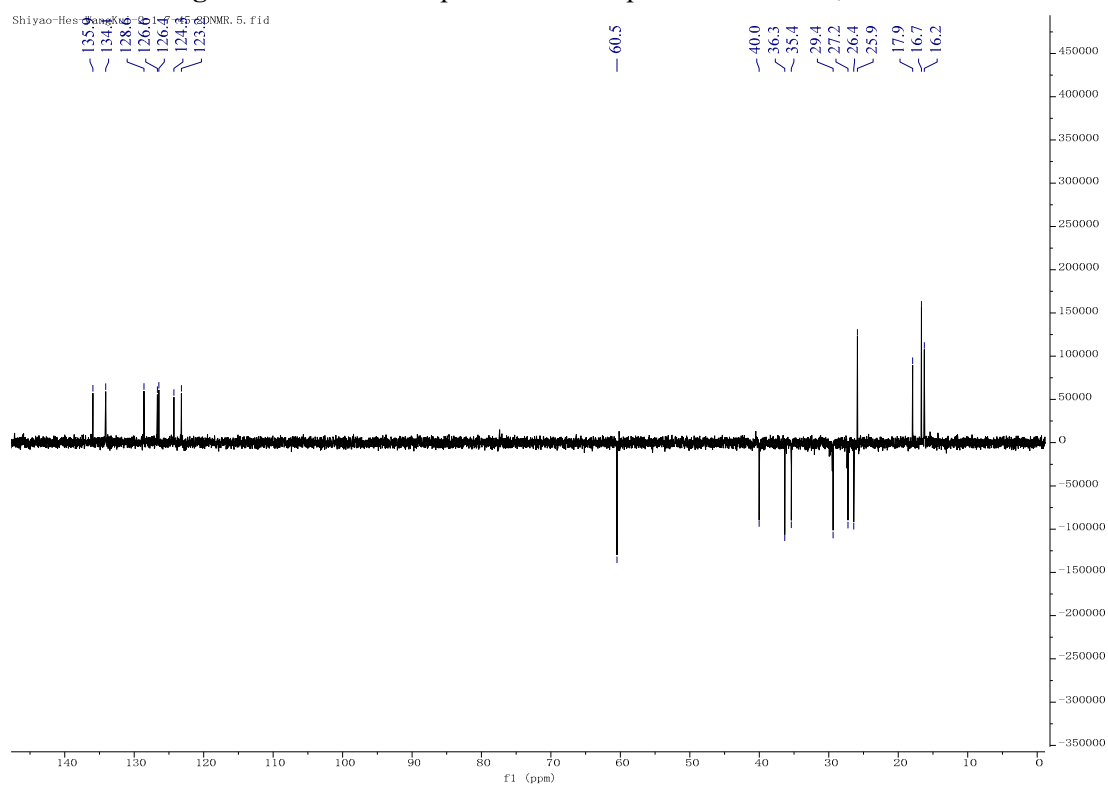


Figure S30 DEPT 135 spectrum of **4** in CDCl₃, 150 MHz

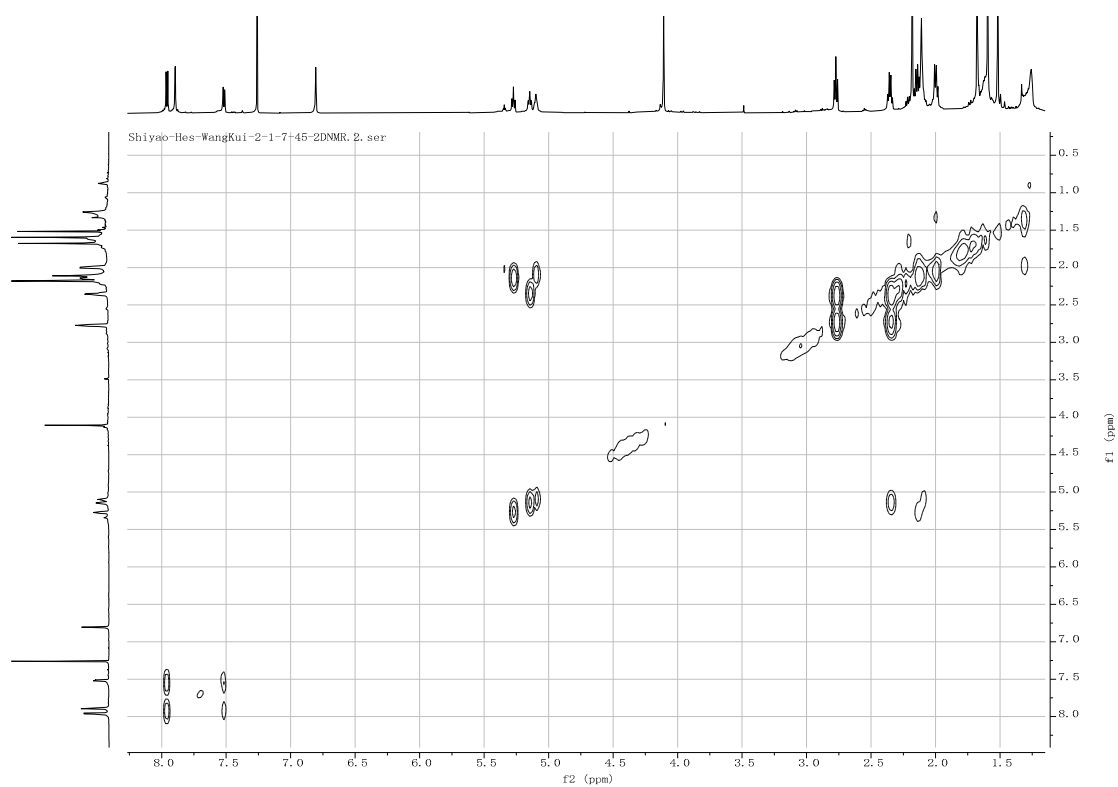


Figure S31 ^1H - ^1H COSY spectrum of **4** in CDCl_3 , 600 MHz

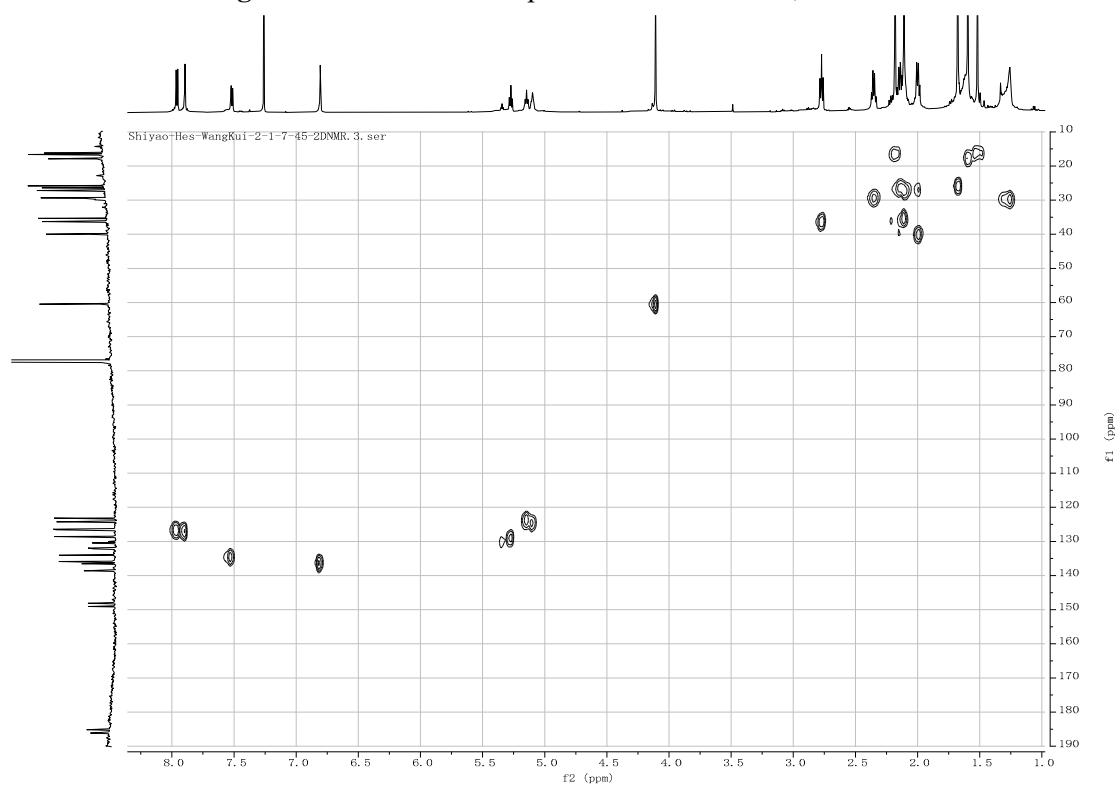


Figure S32 HSQC spectrum of **4** in CDCl_3 , 150 MHz

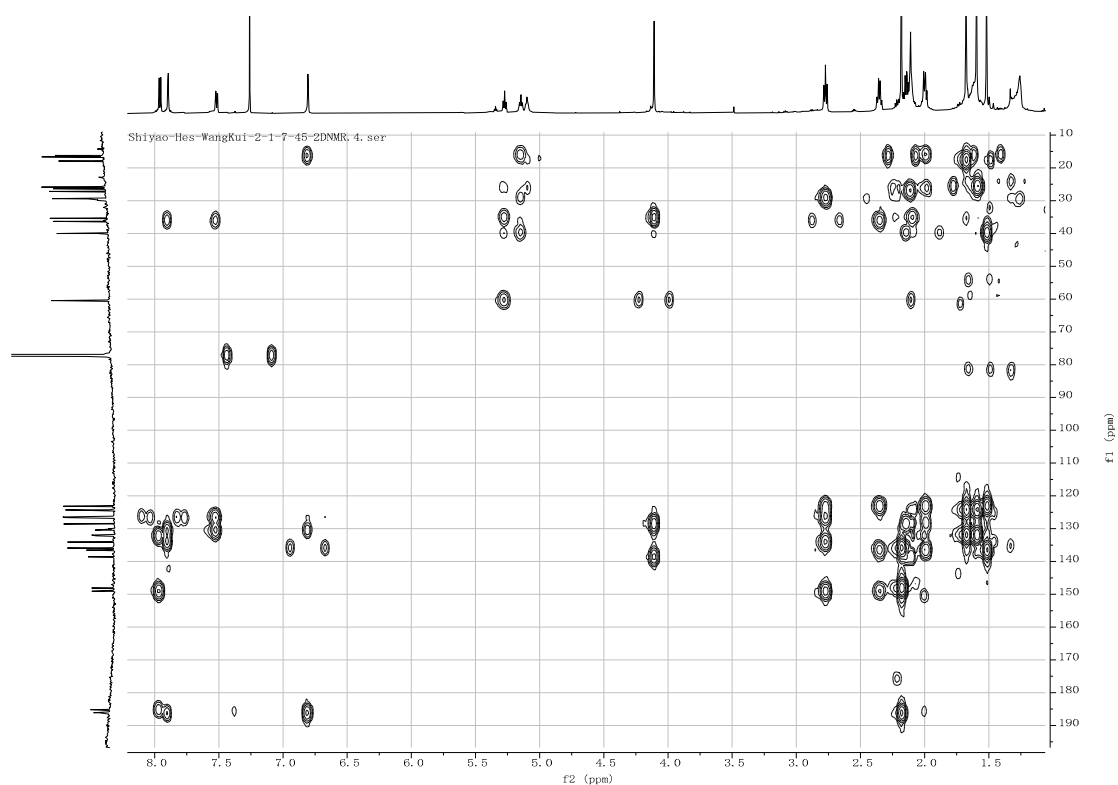


Figure S33 HMBC spectrum of **4** in CDCl_3 , 150 MHz

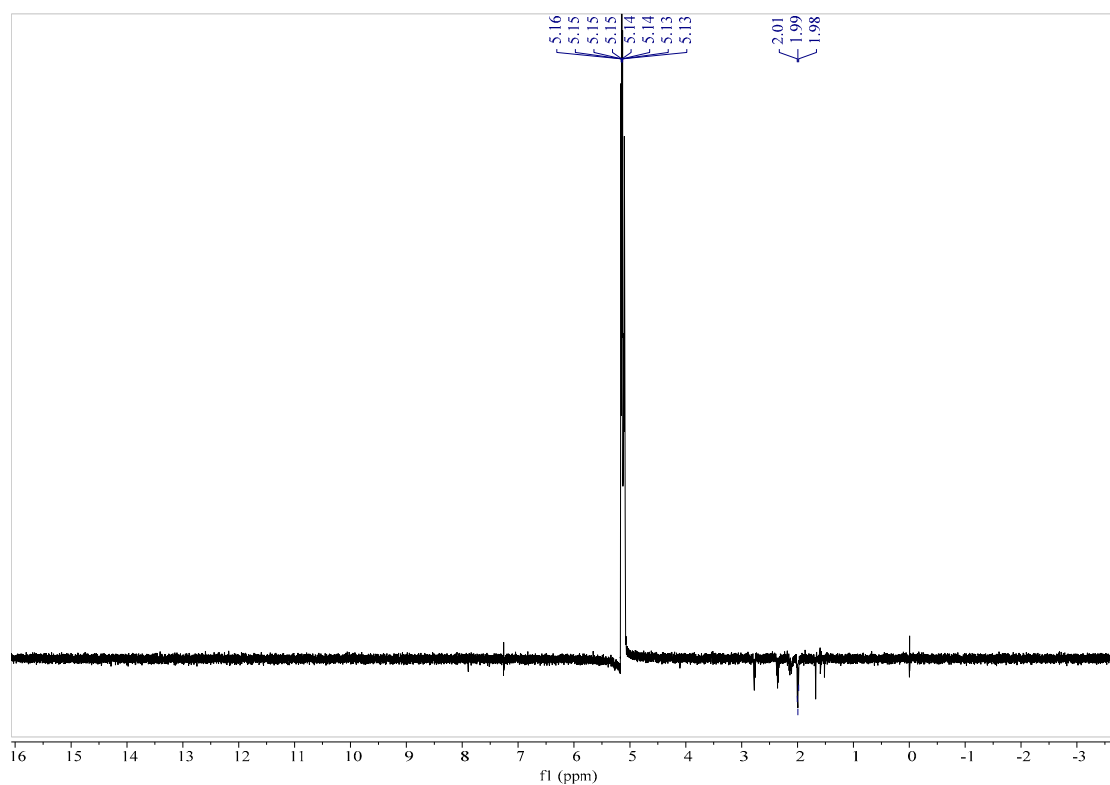


Figure S34 1D NOE spectrum of **4** in CDCl_3 , 600 MHz (H-6)

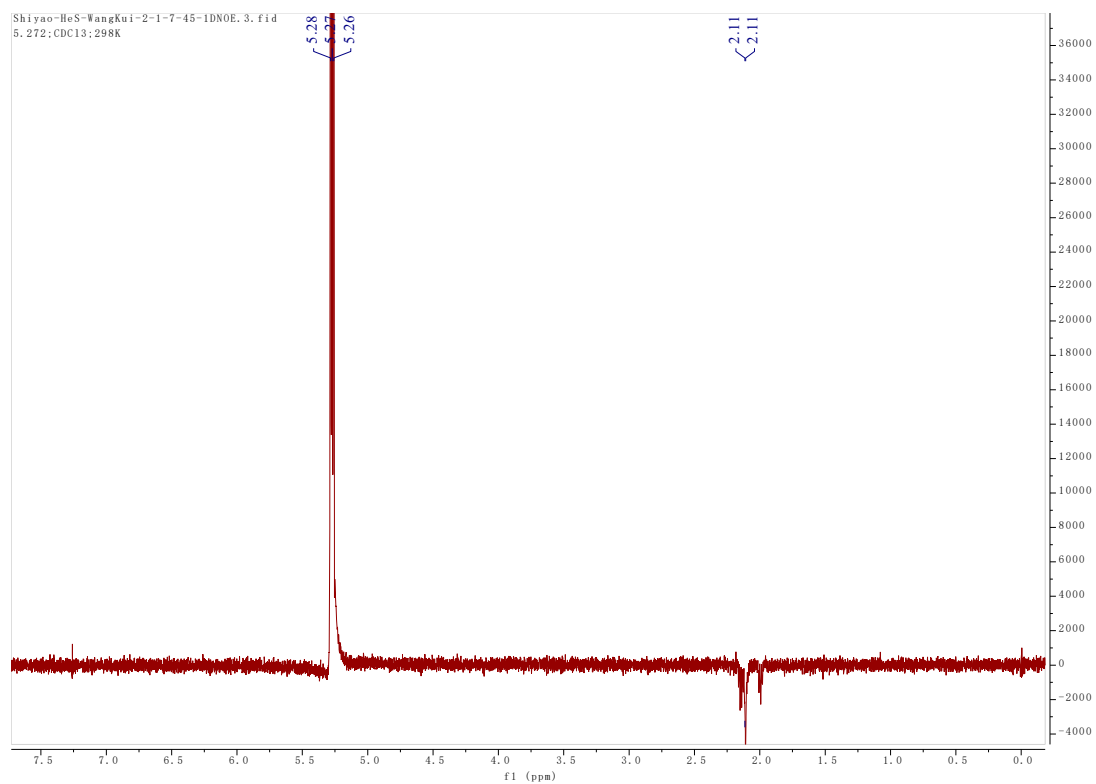


Figure S35 1D NOE spectrum of **4** in CDCl_3 , 600 MHz (H-10)

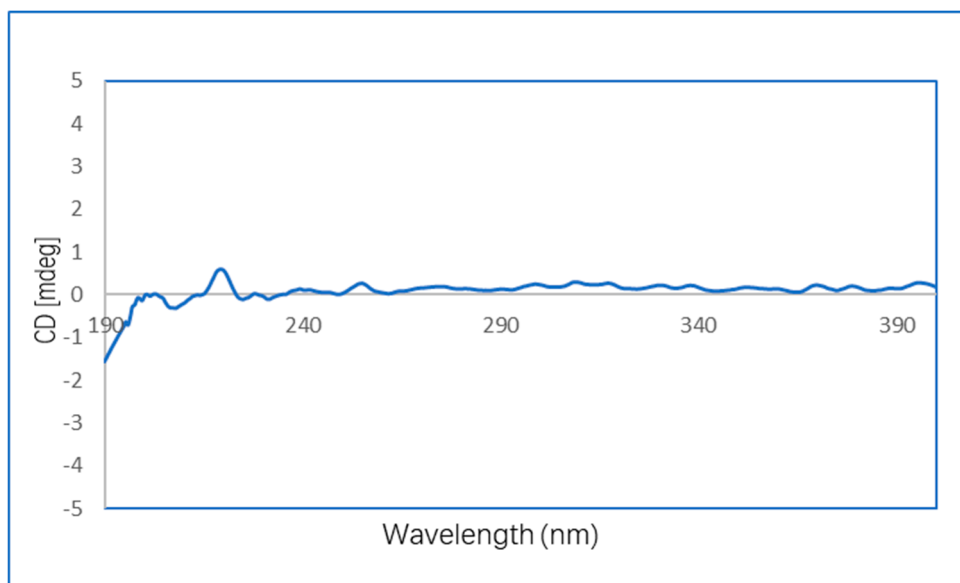


Figure S36 The experimental ECD spectrum of **1**

Figure S37 The experimental ECD spectrum of **2**