

Supplementary Data

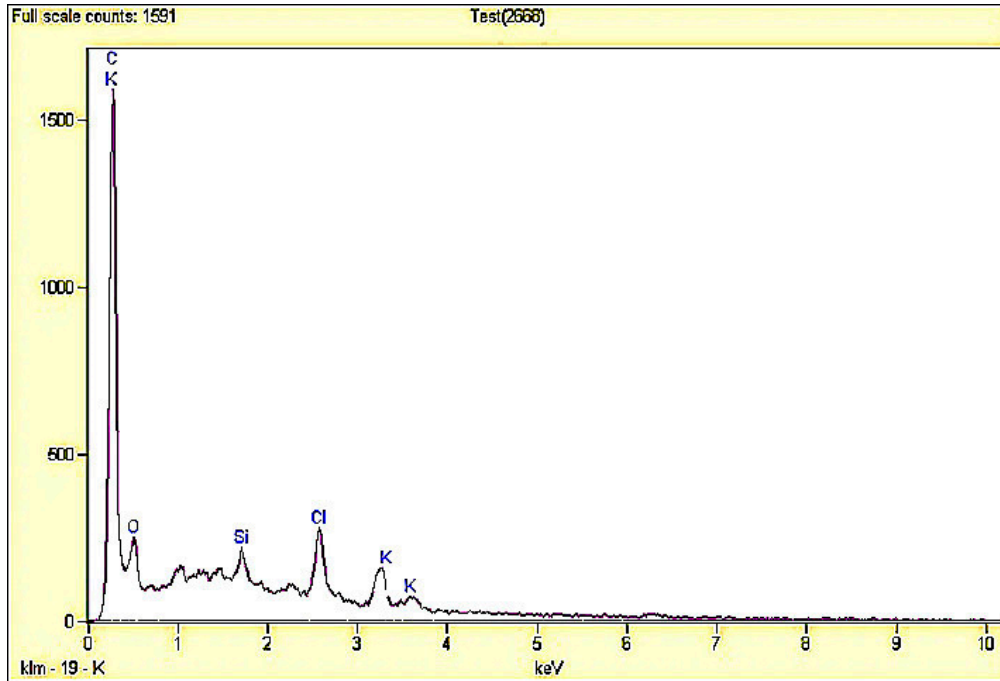


Figure S1. EDX analysis showing the elemental composition in the non-pretreated CSAC.

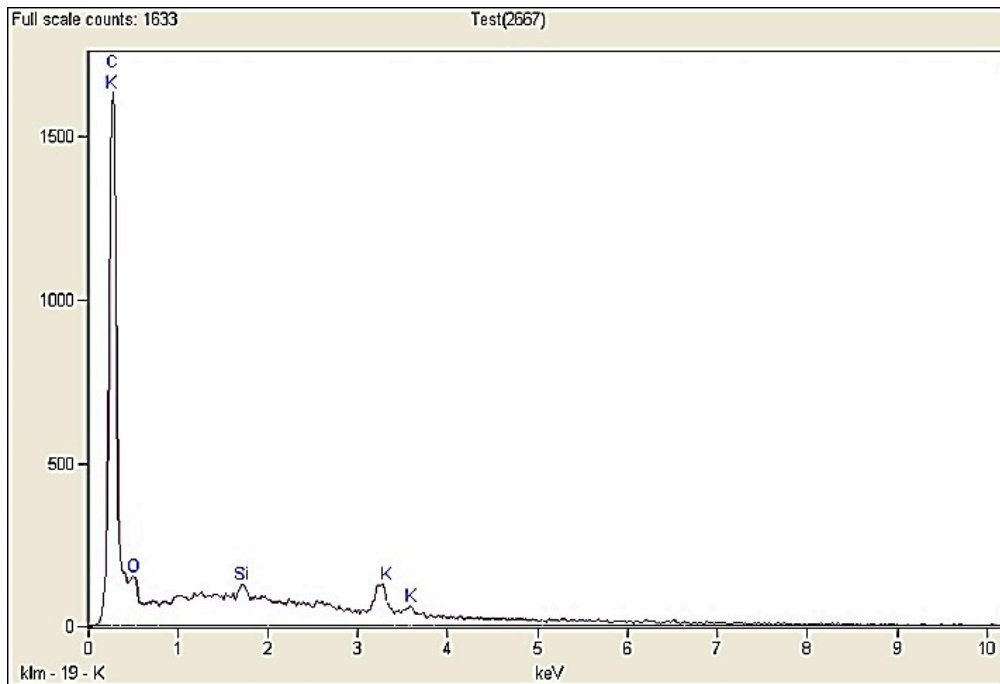


Figure S2. EDX analysis showing the elemental composition in the microwave pretreated CSAC.

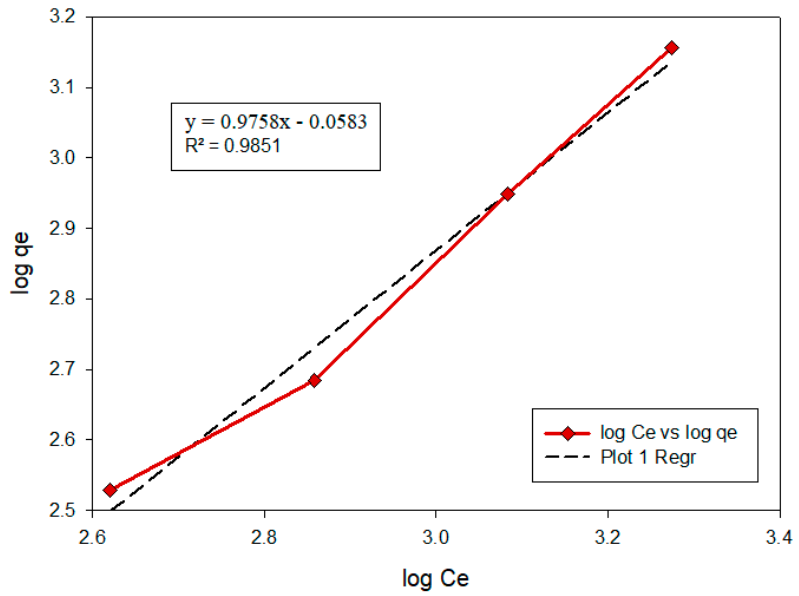


Figure S3. Freundlich isotherm model of colour adsorption onto the pretreated CSAC at 27 °C.

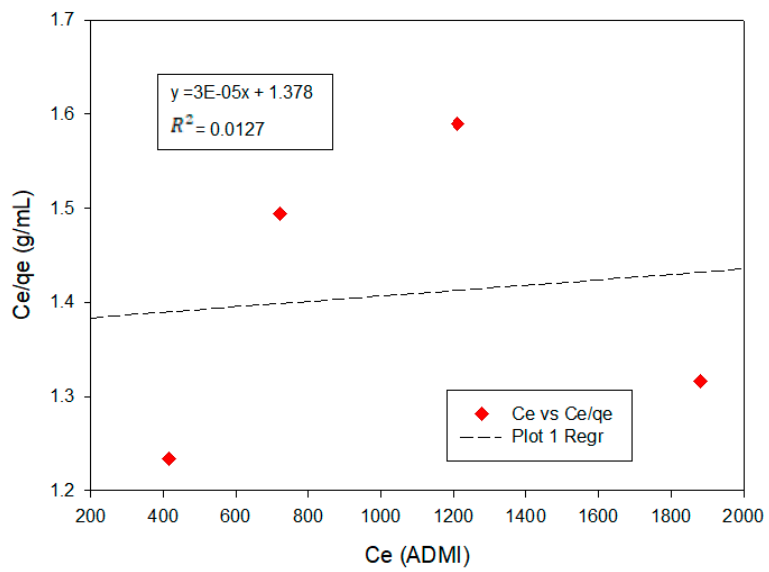


Figure S4. Langmuir isotherm model of colour adsorption onto the pretreated CSAC at 27 °C.