

Supplementary Material

Table S1. Species, feeding habits, lengths (Mean \pm SD) and weights (Mean \pm SD) for cultured fishes

Common Name	Scientific Name	Feeding Habits	n	Length (cm)	Weight (g)
Catfish	<i>Silurus asotus</i>	Carnivorous	8	40.15 \pm 1.95	615 \pm 22
Carp	<i>Cyprinus carpio</i>	Omnivorous	8	36.35 \pm 2.05	614 \pm 22
Crucian carp	<i>Carassius auratus</i>	Omnivorous	8	30.80 \pm 2.10	413 \pm 24
Grass carp	<i>Ctenopharyngodon idellus</i>	Herbivorous	8	45.70 \pm 2.10	1104 \pm 106

Table S2. Species, feeding habits, lengths (Mean \pm SD) and weights (Mean \pm SD) for wild fishes

Common Name	Scientific Name	Feeding Habits	n	Length (cm)	Weight (g)
Crucian carp	<i>Carassius auratus</i>	Omnivorous	8	20.50 \pm 2.10	175 \pm 14
Grass carp	<i>Ctenopharyngodon idellus</i>	Herbivorous	8	35.55 \pm 3.35	576 \pm 26

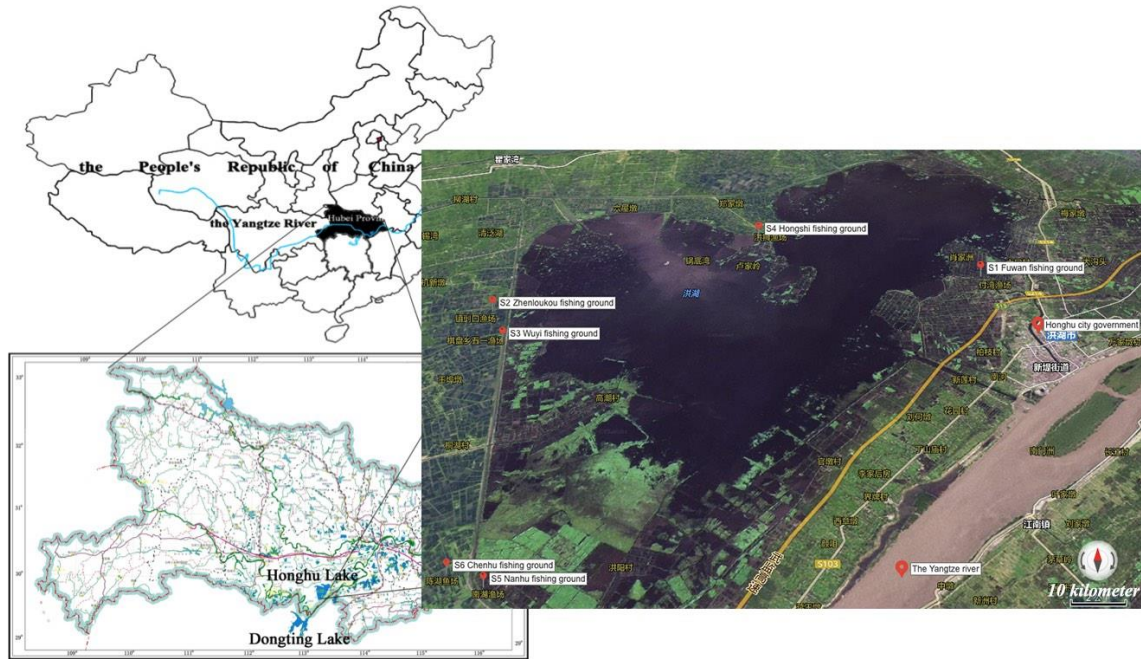


Figure S1. Map of cultured fishes sampling fishponds (red points S1-6) around Honghu Lake