

Association between Urban Greenness and Depressive Symptoms: Evaluation of Greenness Using Various Indicators

Hyeonjin Song¹, **Kevin James Lane**², **Honghyok Kim**³, **Hyomi Kim**³, **Garam Byun**³, **Minh Le**³, **Yongsoo Choi**³, **Chanryul Park**¹ and **Jong-Tae Lee**^{3,4,*}

¹ Urban Forests Research Center, National Institute of Forest Science, Seoul 02455, Korea; etaoin0810@naver.com (H.S.); maeulsoop@korea.kr (C.P.)

² School of Public Health, Boston University, Boston, MA 02118, USA; klane@bu.edu

³ BK21PLUS Program in 'Embodiment: Health-Society Interaction', Department of Public Health Science, Graduate School, Korea University, Seoul 02841, Korea; honghyok@korea.ac.kr (Ho.K.); ippiy@hanmail.net (Hy.K.); garam0110@gmail.com (G.B.); 91.minhle@gmail.com (M.L.); yschoi860@gmail.com (Y.C.)

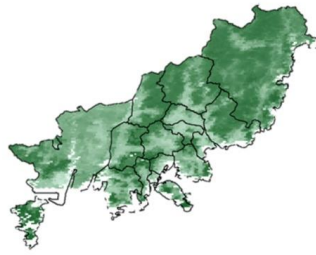
⁴ School of Health Policy and Management, College of Health Science, Korea University, Seoul 02841, Korea

* Correspondence: jtleee@korea.ac.kr; Tel.: +82-2-3290-5668

Seoul



Busan



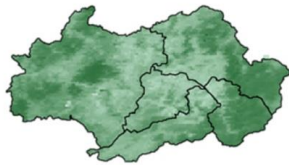
Daegu



Incheon



Gwangju



Daejeon



Ulsan

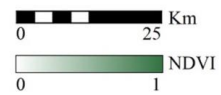
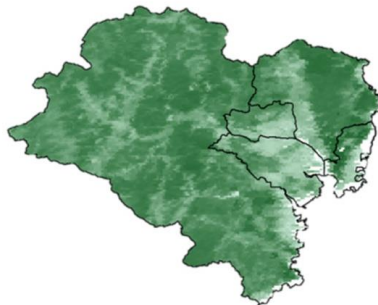


Figure S1. NDVI image of the seven major cities in Korea, 16 October 2009.

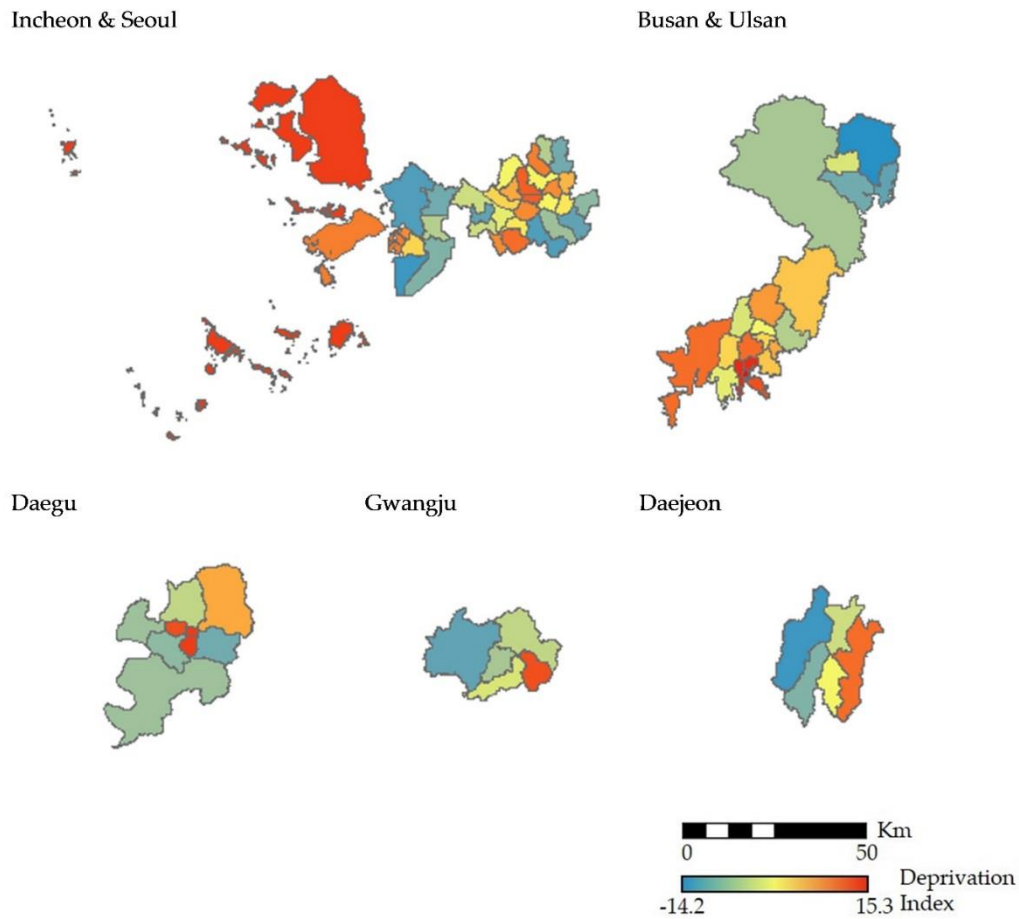


Figure S2. Deprivation index of the 74 districts in the seven major cities in Korea. A higher deprivation index value indicates more deprived.

Table S1. Indicators for greenness and their correlations for the 74 districts in the seven major cities in Korea.

	NDVI	FA ^a (ha)	FV ^b (m ³)	FA per district area (%)	FV per district area (m ³ /ha)	FA per capita (ha/person)	FV per capita (m ³ /person)
NDVI		0.57 *	0.61 *	0.94 *	0.94 *	0.38 **	0.43 **
FA (ha)			0.99 *	0.52 *	0.44 *	0.55 *	0.62 *
FV (m ³)				0.54 *	0.50 *	0.49 *	0.57 *
FA per district area (%)					0.93 *	0.37 **	0.41 **
FV per district area (m ³ /ha)						0.23 **	0.29 **
FA per capita (ha/person)							0.99 *
FV per capita (m ³ /person)							

^a Forest area; ^b Forest volume. * p -value < 0.001; ** p -value < 0.05.