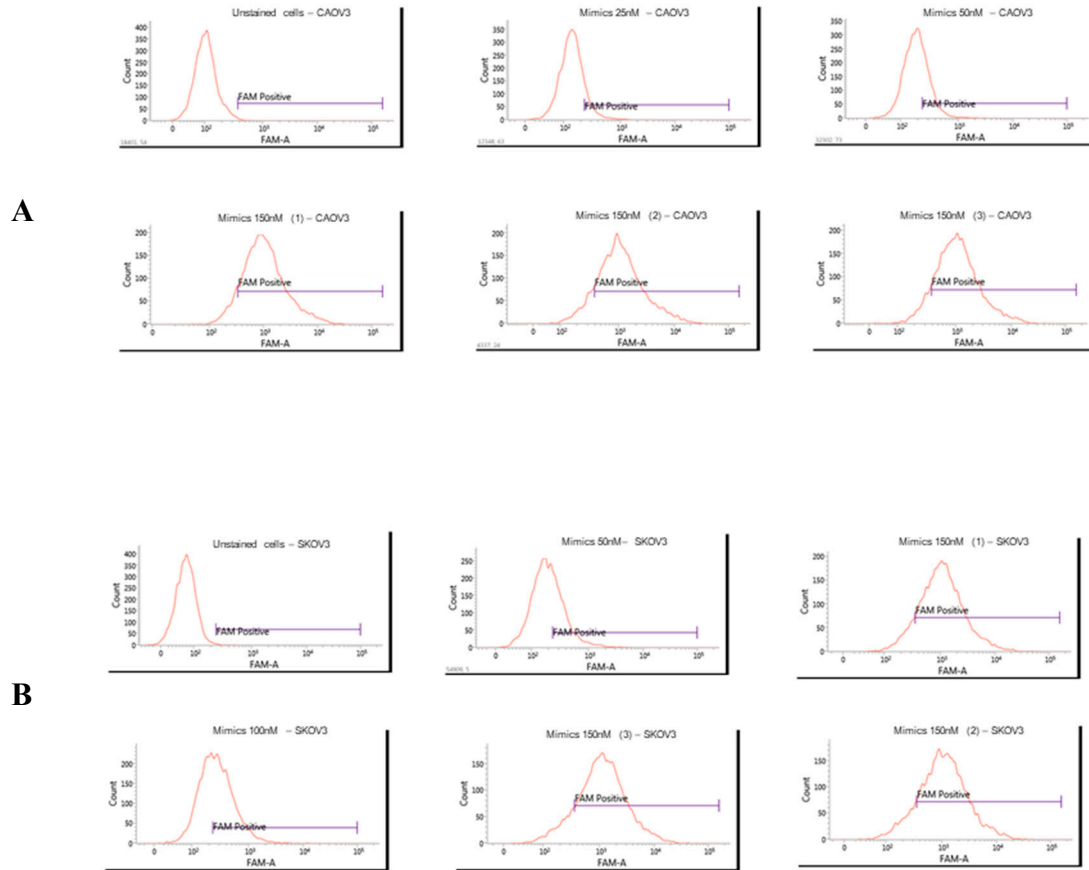


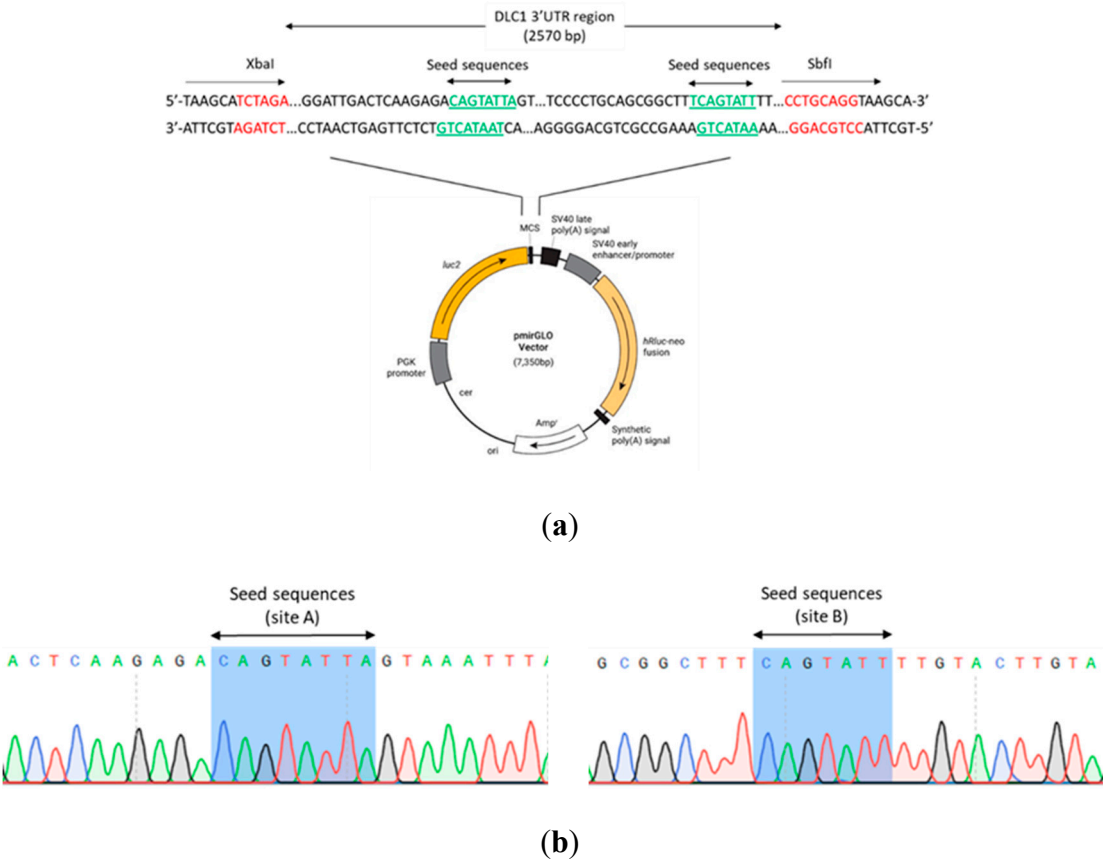
**Supplementary Figure 1.** Transfection efficiency of miR-200c-3p mimic in (A) CAOV3 and (B) SKOV3 cells. Both cells showing more than 90% efficiency in 150 nM



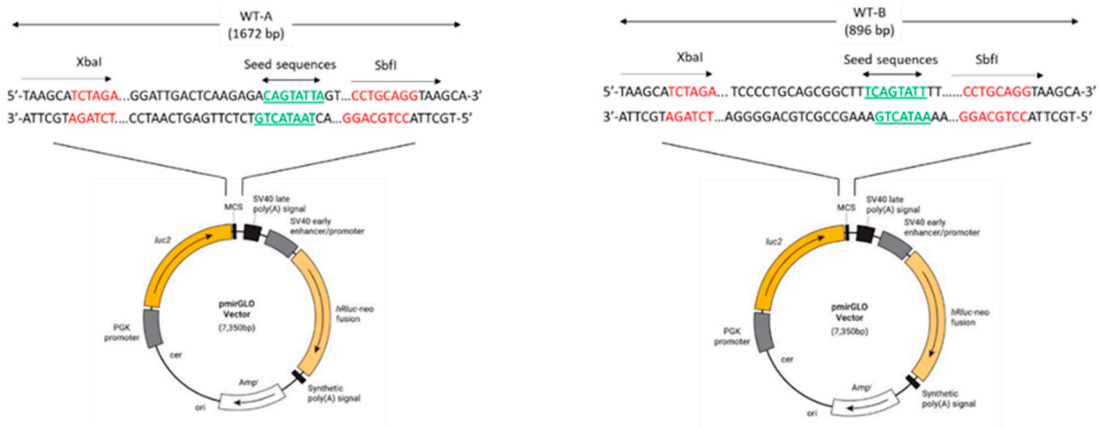
## A

# B

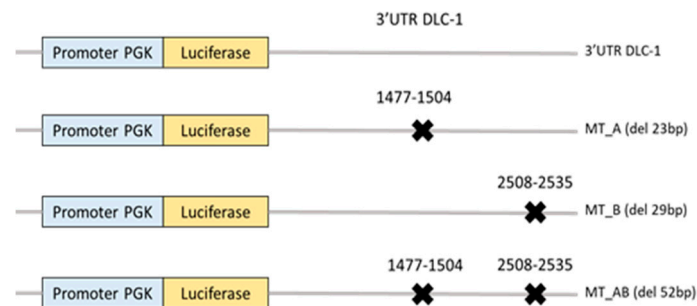
**Supplementary Figure 3.** (A) Cloning of 2.57 kb of DLC1 3'UTR with seed sequences highlighted in green at XbaI-SbfI sites (highlighted in red) in the pmirGlo reporter vector. (B) Sequencing analysis confirmed seed sequences cloned in the vector.



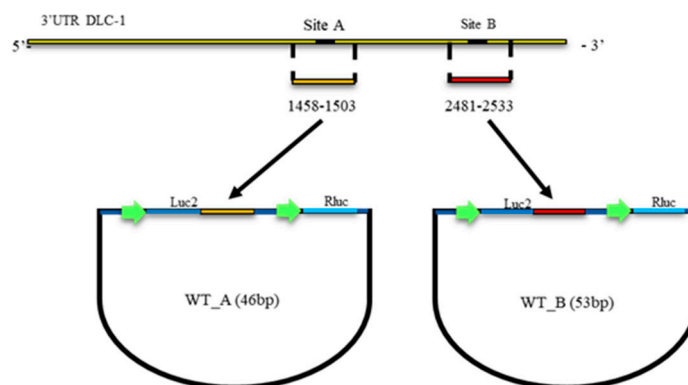
**Supplementary Figure 4.** (A) Representation of vectors with each of the binding sites constructed, namely WT-A and WT-B. (B) The constructs for luciferase activity of vectors containing, DLC1 3'UTR sequence, deletions of both site A (MT-A) and B (MT-B) or either site A or B (MT-AB). (C) Isolation of the binding site sequence (underlined) constructed into different vectors namely WT-A (46bp) and WT-B (53bp) together with mutant type vectors contained three substitutional mutation (red sequence) namely MT-A (46bp) and MT-B (53bp).



(a)



(b)



WT-A (46bp): 5'-...AAGAGACAGTATTAGTAAA...-3'

WT-B (53bp): 5'-...GCGGCTTTCAGTATTTGTACT...-3'

MT-A (46bp): 5'-...ACTCAAGAGAGTCTATTAGTAA...-3'

MT-B (53bp): 5'-...CGGCTTGTCTATTTGTAC...-3'

(c)