

Figure S1. Funnel plot for the association between urinary NAP metabolites and diabetes. P-value of Begg's Test: 0.0746, P-value of Egger's test: 0.1757

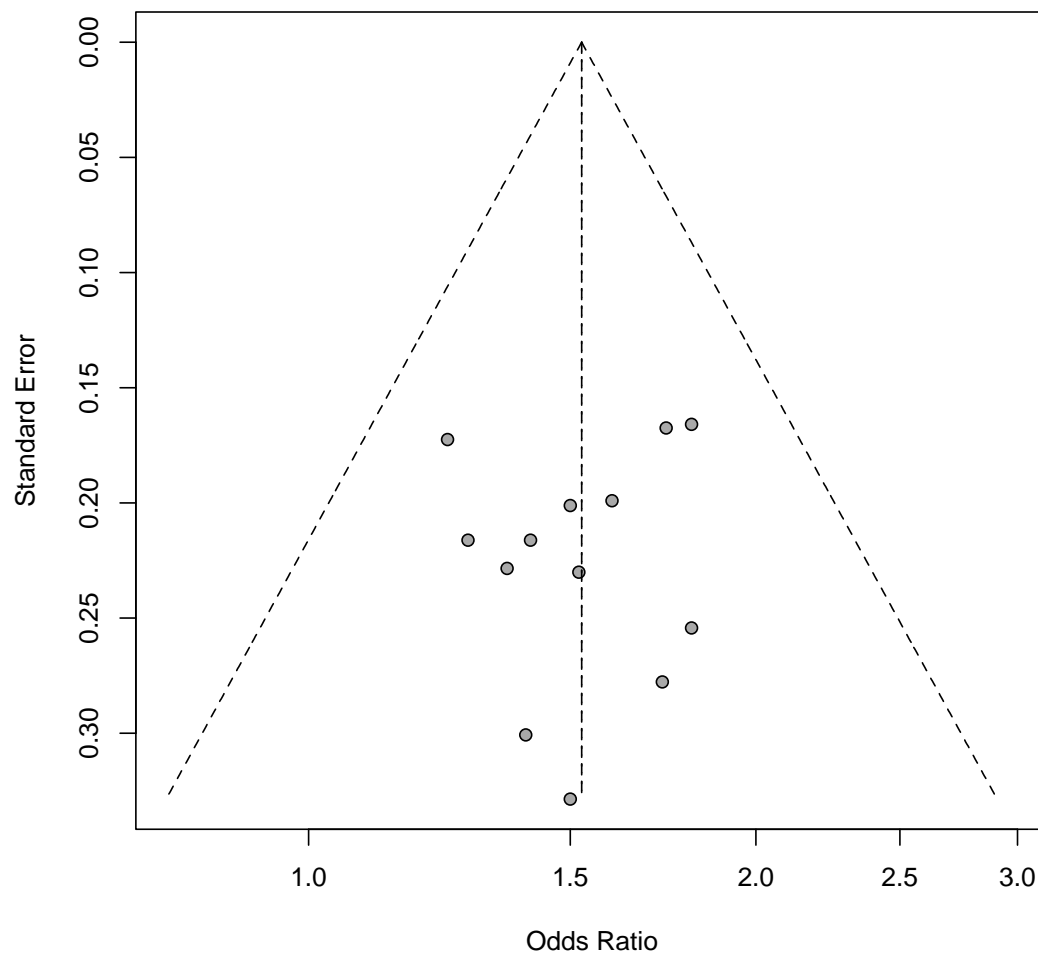


Figure S2. Funnel plot for the association between urinary FLU metabolites and diabetes. P-value of Begg's Test: 0.7143, P-value of Egger's test: 0.7238

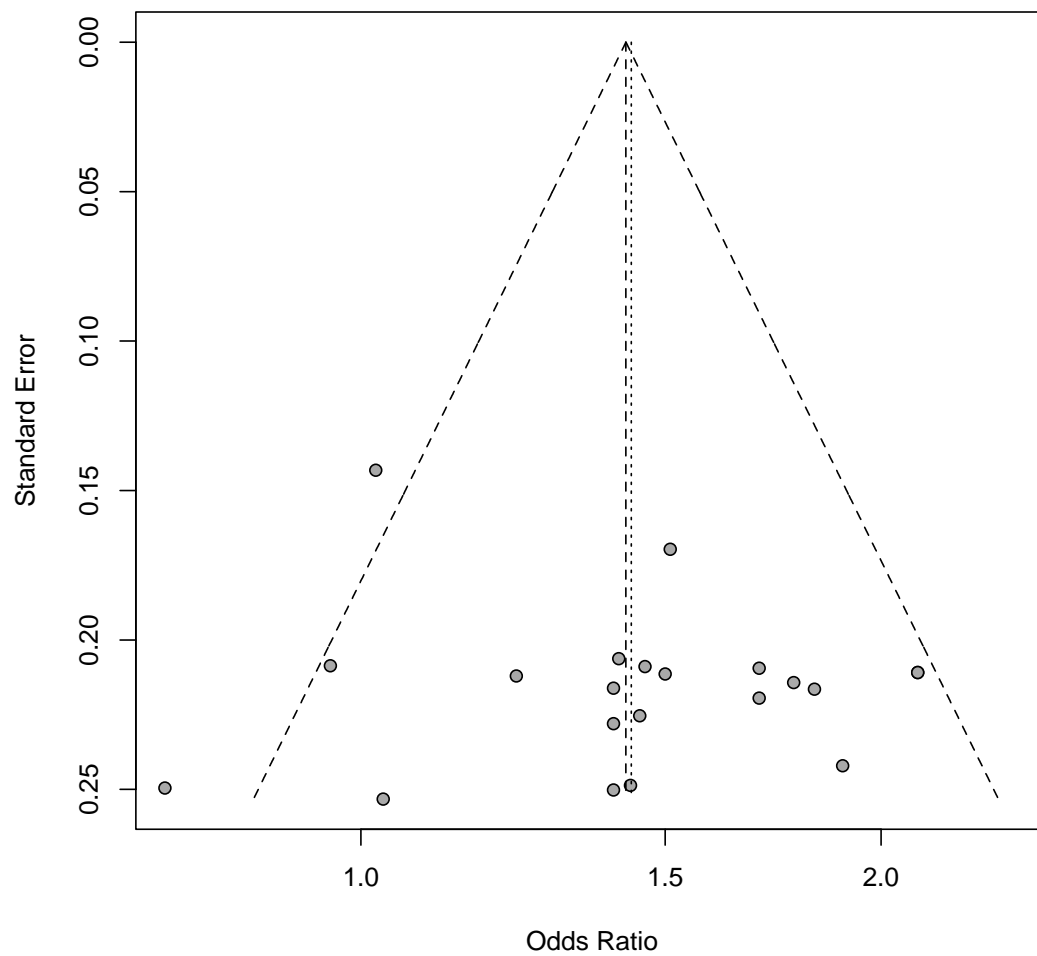


Figure S3. Funnel plot for the association between urinary PHEN metabolites and diabetes. P-value of Begg's Test: 0.6074, P-value of Egger's test: 0.4144

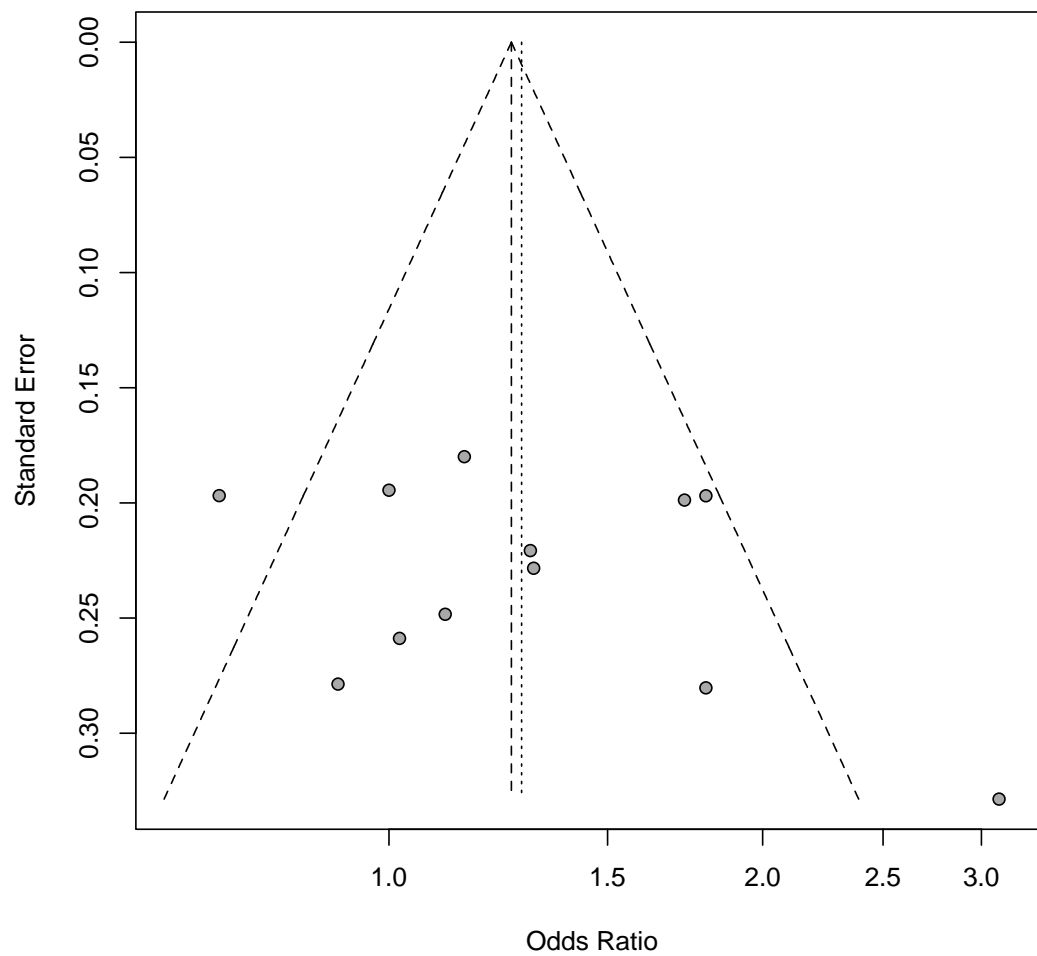


Figure S4. Funnel plot for the association between urinary 1-OHP, Σ OH-PAH metabolites and diabetes. P-value of Begg's Test: 0.4106, P-value of Egger's test: 0.3077

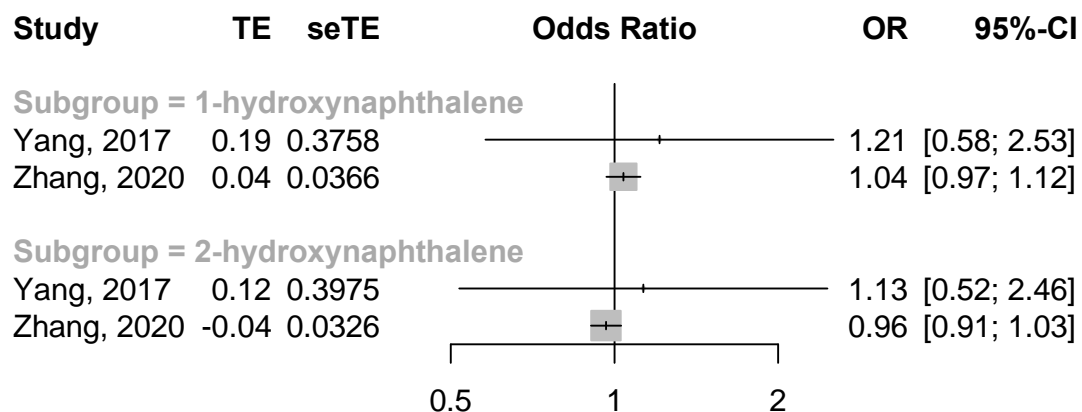


Figure S5. The association between urinary NAP metabolites and risk of T2DM in coke oven workers

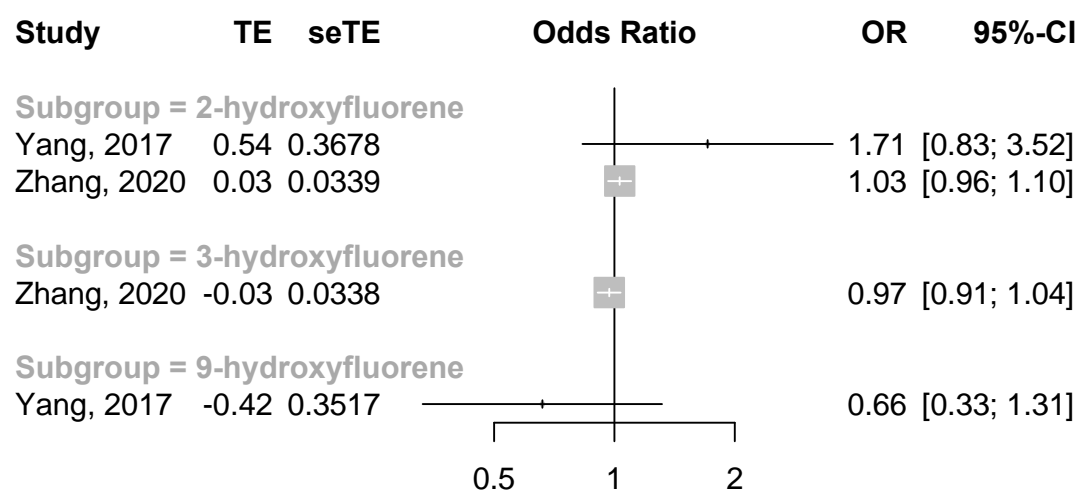


Figure S6. The association between urinary FLU metabolites and risk of T2DM in coke oven workers

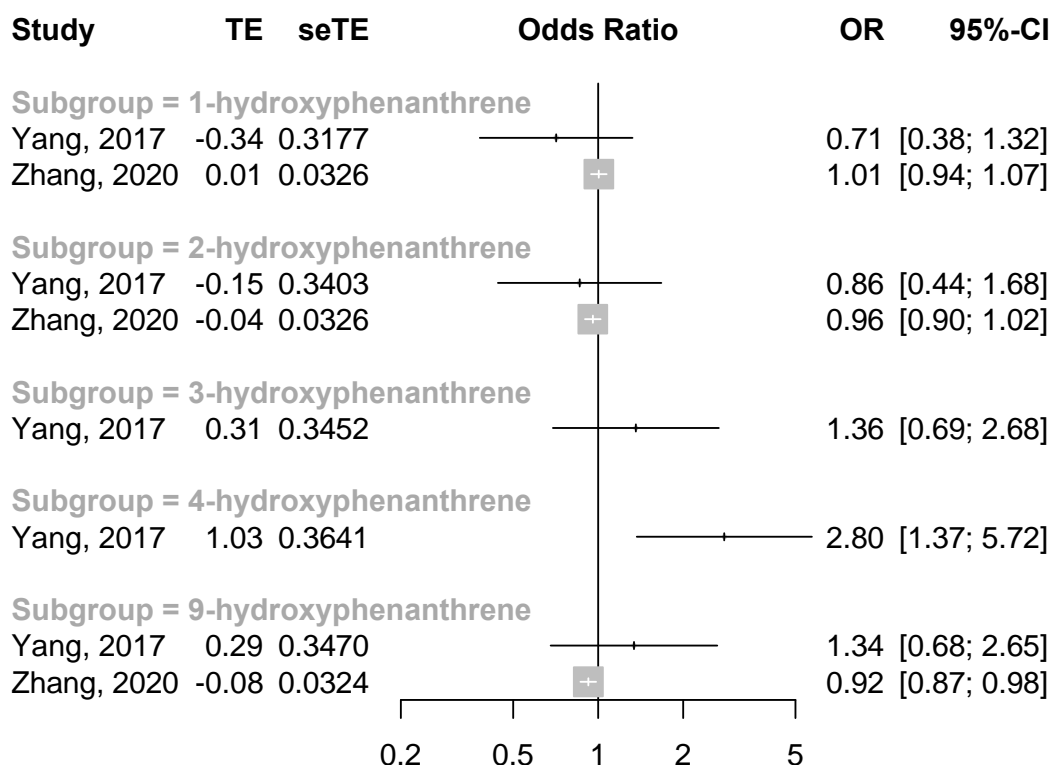


Figure S7. The association between urinary PHEN metabolites and risk of T2DM in coke oven workers

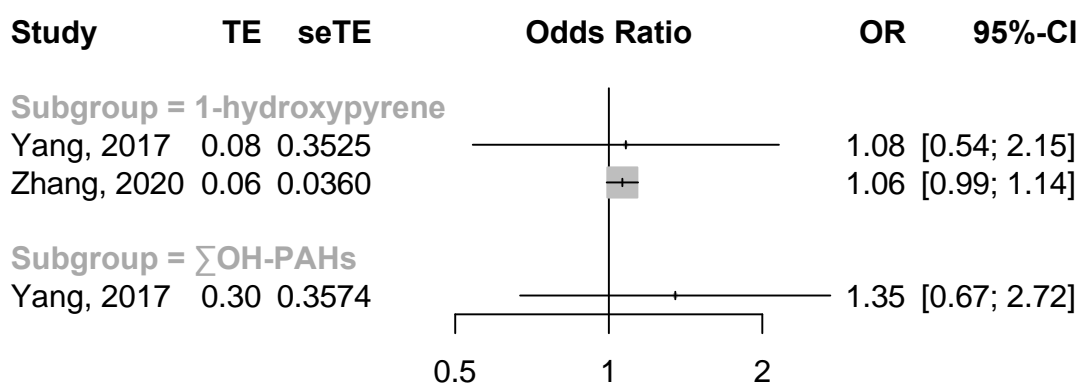


Figure S8. The association between urinary 1-OHP, Σ OH-PAHs metabolites and risk of T2DM in coke oven workers