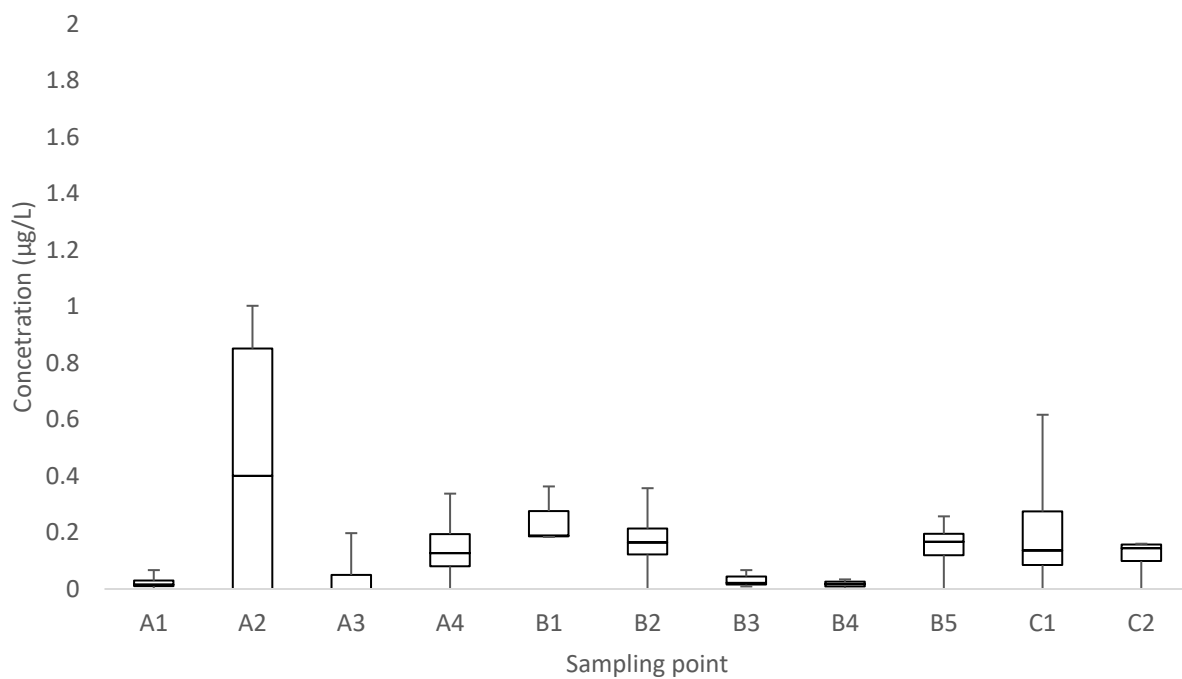


(e)

Terbuthylazine



(f)

Metolachlor

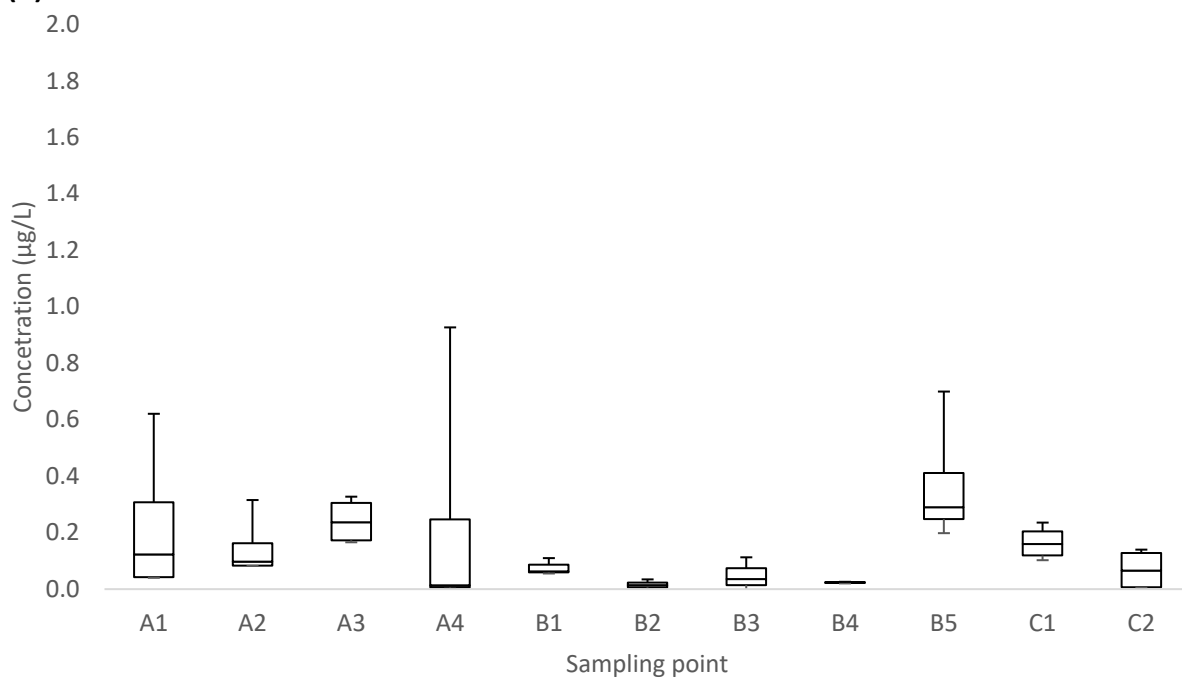


Figure S1. Box-whisker plots of concentrations of pesticides in sampling points: **(a)** atrazine, **(b)** DIA, **(c)** DEA, **(d)** HA, **(e)** terbuthylazine and **(f)** metolachlor. The caps at the end of each box indicate the extreme values (minimum and maximum), the box is defined by the lower and upper quartiles, and the line inside the box denotes the median value. The pesticide concentrations below the LOQs are considered as zero.