



## Supplementary File S1

The questionnaire for the municipality of Jelenia Góra

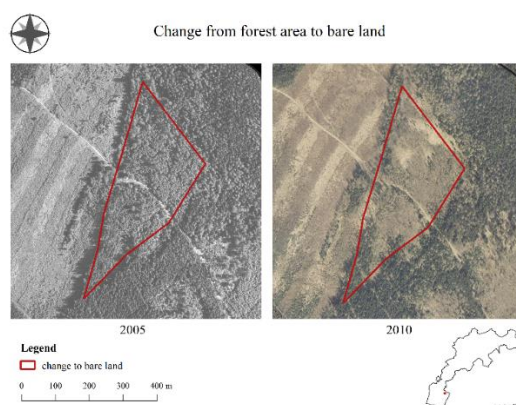
1. **What neighborhood in Jelenia Góra do you live in? (open question)**
2. **How long have you been a resident of the city of Jelenia Góra?**
  - less than 5 years
  - 5-10 years
  - 11-15 years
  - 16-20 years
  - more than 20 years
3. **Have you noticed any changes in the landscape between 2005 and 2020? (If the answer is no please go to question 5)**
  - no
  - low
  - medium
  - high
4. **Could you identify the 3 most important landscape transformations in the city between 2005 and 2010, along with whether the change was positive or negative? (open question)**
5. **In your opinion, which of the listed time periods was characterized by the greatest intensity of change?**
  - 2005-2010
  - 2010-2015
  - 2015-2020
6. **In which part of the city do you think changes occur most frequently? (open question)**
7. **What areas have been the most prone to change in your opinion? (any number of answers)**
  - residential area
  - roads and rail networks and associated land
  - service and industry area
  - mining area, construction area
  - parks, sport and leisure area
  - meadows and pastures
  - arable land
  - orchards, vineyards and plantations
  - forest area
  - scrub and/or herbaceous vegetation associations
  - bare land (areas with little vegetation)
  - water area or wetland
8. **What areas do you think has come the most in the city over the years 2005-2020? (any number of answers)**
  - residential area
  - roads and rail networks and associated land
  - service and industry area
  - mining area, construction area
  - parks, sport and leisure area
  - meadows and pastures
  - arable land
  - orchards, vineyards and plantations
  - forest area
  - scrub and/or herbaceous vegetation associations
  - bare land (areas with little vegetation)

- water area or wetland

**9. What transformations do you think have taken place most often? (any number of answers)**

- changes resulting from the emergence of new development
- changes within the existing development
- changes in types of crops
- changes within forest areas
- changes associated with the extraction of mineral deposits
- emergence of new transportation areas
- emergence of new recreational areas
- emergence of new water reservoirs
- natural succession in meadow areas and in areas of arable land
- other

**10. Which of the following forces could have affected the change shown below? (any number of answers)**



- agricultural and forestry policy
- nature conservation policy
- spatial development policy
- property rights
- policy climate
- structural change in agriculture and forestry
- real estate market
- prices for agricultural and forestry products
- commercialization
- population numbers and its structure
- public attitudes, values and beliefs
- individual and household behavior
- technological modernization of society
- technological modernization in land management
- climate
- disturbances
- soil characteristics
- topography
- extraction of deposits
- development of areas
- construction of water reservoirs
- natural disaster
- other

**11. How do you evaluate the above change?**

- 1 - very negative impact on the landscape

- 2 - negative impact on the landscape
- 3 - neutral impact on the landscape
- 4 - positive impact on the landscape
- 5 - very positive impact on the landscape

**12. Which of the following forces could have affected the change shown below? (any number of answers)**

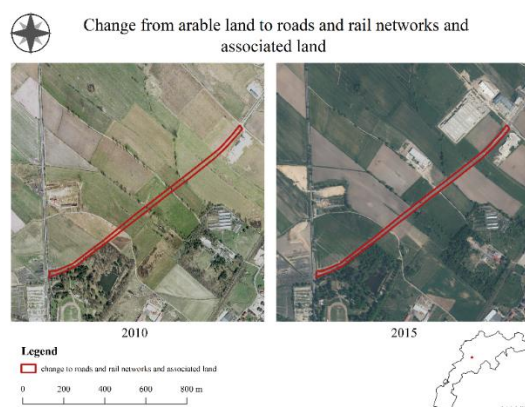


- agricultural and forestry policy
- nature conservation policy
- spatial development policy
- property rights
- policy climate
- structural change in agriculture and forestry
- real estate market
- prices for agricultural and forestry products
- commercialization
- population numbers and its structure
- public attitudes, values and beliefs
- individual and household behavior
- technological modernization of society
- technological modernization in land management
- climate
- disturbances
- soil characteristics
- topography
- extraction of deposits
- development of areas
- construction of water reservoirs
- natural disaster
- other

**13. How do you evaluate the above change?**

- 1 - very negative impact on the landscape
- 2 - negative impact on the landscape
- 3 - neutral impact on the landscape
- 4 - positive impact on the landscape
- 5 - very positive impact on the landscape

**14. Which of the following forces could have affected the change shown below? (any number of answers)**



- agricultural and forestry policy
- nature conservation policy
- spatial development policy
- property rights
- policy climate
- structural change in agriculture and forestry
- real estate market
- prices for agricultural and forestry products
- commercialization
- population numbers and its structure
- public attitudes, values and beliefs
- individual and household behavior
- technological modernization of society
- technological modernization in land management
- climate
- disturbances
- soil characteristics
- topography
- extraction of deposits
- development of areas
- construction of water reservoirs
- natural disaster
- other

**15. How do you evaluate the above change?**

- 1 - very negative impact on the landscape
- 2 - negative impact on the landscape
- 3 - neutral impact on the landscape
- 4 - positive impact on the landscape
- 5 - very positive impact on the landscape

**16. Which of the following forces could have affected the change shown below? (any number of answers)**

Change from meadows and pastures to residential area



2012



2017

- agricultural and forestry policy
- nature conservation policy
- spatial development policy
- property rights
- policy climate
- structural change in agriculture and forestry
- real estate market
- prices for agricultural and forestry products
- commercialization
- population numbers and its structure
- public attitudes, values and beliefs
- individual and household behavior
- technological modernization of society
- technological modernization in land management
- climate
- disturbances
- soil characteristics
- topography
- extraction of deposits
- development of areas
- construction of water reservoirs
- natural disaster
- other

**17. How do you evaluate the above change?**

- 1 - very negative impact on the landscape
- 2 - negative impact on the landscape
- 3 - neutral impact on the landscape
- 4 - positive impact on the landscape
- 5 - very positive impact on the landscape

**18. Which of the following forces could have affected the change shown below? (any number of answers)**

Change from arable land to service and industry area

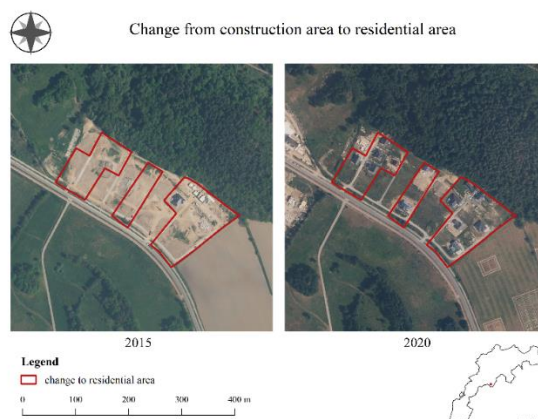


- agricultural and forestry policy
- nature conservation policy
- spatial development policy
- property rights
- policy climate
- structural change in agriculture and forestry
- real estate market
- prices for agricultural and forestry products
- commercialization
- population numbers and its structure
- public attitudes, values and beliefs
- individual and household behavior
- technological modernization of society
- technological modernization in land management
- climate
- disturbances
- soil characteristics
- topography
- extraction of deposits
- development of areas
- construction of water reservoirs
- natural disaster
- other

**19. How do you evaluate the above change?**

- 1 - very negative impact on the landscape
- 2 - negative impact on the landscape
- 3 - neutral impact on the landscape
- 4 - positive impact on the landscape
- 5 - very positive impact on the landscape

**20. Which of the following forces could have affected the change shown below? (any number of answers)**

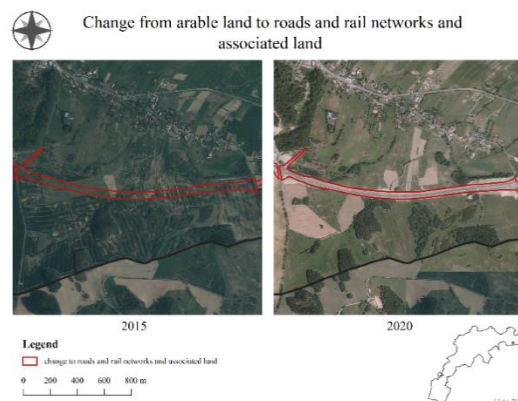


- agricultural and forestry policy
- nature conservation policy
- spatial development policy
- property rights
- policy climate
- structural change in agriculture and forestry
- real estate market
- prices for agricultural and forestry products
- commercialization
- population numbers and its structure
- public attitudes, values and beliefs
- individual and household behavior
- technological modernization of society
- technological modernization in land management
- climate
- disturbances
- soil characteristics
- topography
- extraction of deposits
- development of areas
- construction of water reservoirs
- natural disaster
- other

**21. How do you evaluate the above change?**

- 1 - very negative impact on the landscape
- 2 - negative impact on the landscape
- 3 - neutral impact on the landscape
- 4 - positive impact on the landscape
- 5 - very positive impact on the landscape



**22. Which of the following forces could have affected the change shown below? (any number of answers)**

- agricultural and forestry policy
- nature conservation policy
- spatial development policy
- property rights
- policy climate
- structural change in agriculture and forestry
- real estate market
- prices for agricultural and forestry products
- commercialization
- population numbers and its structure
- public attitudes, values and beliefs
- individual and household behavior
- technological modernization of society
- technological modernization in land management
- climate
- disturbances
- soil characteristics
- topography
- extraction of deposits
- development of areas
- construction of water reservoirs
- natural disaster
- other

**23. How do you evaluate the above change?**

- 1 - very negative impact on the landscape
- 2 - negative impact on the landscape
- 3 - neutral impact on the landscape
- 4 - positive impact on the landscape
- 5 - very positive impact on the landscape

**24. Your own opinion on the changes in the landscape of the commune. What has most influenced the existing living conditions, etc.? (open question)****25. Gender**

- male
- female

**26. Age (open question)**



**27. Education**

- primary
- professional
- secondary
- higher

**28. Social status**

- student
- employed
- unemployed
- pensioner