



Article

PM_{2.5}-Associated Hospitalization Risk of Cardiovascular Diseases in Wuhan: Cases Alleviated by Residential Greenness

Haomin Yang ^{1,†} , Jianpeng Liao ^{1,†}, Jing Wang ¹, Can Yang ¹, Kuizhuang Jiao ¹, Xiaodie Wang ¹, Zenghui Huang ¹, Xuxi Ma ¹, Xingyuan Liu ², Jingling Liao ³ and Lu Ma ^{1,*}

¹ Department of Biostatistics, School of Public Health, Wuhan University, Wuhan 430071, China

² Wuhan Information Center of Health and Family Planning, Wuhan 430021, China

³ Department of Nutrition and Food Hygiene, School of Public Health, Medical College, Wuhan University of Science and Technology, Wuhan 430081, China

* Correspondence: malu@whu.edu.cn

† These authors contributed equally to this work.

Abstract: PM_{2.5}, a type of particulate matter with an aerodynamic diameter of less than 2.5 μm, is associated with the occurrence of cardiovascular diseases (CVDs), while greenness seems to be associated with better cardiovascular health. We identified 499,336 CVD cases in Wuhan's 74 municipal hospitals between 2017 and 2019. A high-resolution PM_{2.5} model and a normalized difference vegetation index (NDVI) map were established to estimate individual exposures. The time-stratified case-crossover design and conditional logistic regression models were applied to explore the associations between PM_{2.5} and CVDs under different levels of environmental factors. Greenness could alleviate PM_{2.5}-induced hospitalization risks of cardiovascular diseases. Compared with patients in the low-greenness group (ER = 0.99%; 95% CI: 0.71%, 1.28%), patients in the high-greenness group (ER = 0.45%; 95% CI: 0.13%, 0.77%) showed a lower increase in total CVD hospitalizations. After dividing the greenness into quartiles and adding long-term PM_{2.5} exposure as a control factor, no significant PM_{2.5}-associated hospitalization risks of CVD were identified in the greenest areas (quartile 4), whether the long-term PM_{2.5} exposure level was high or low. Intriguingly, in the least green areas (quartile 1), the PM_{2.5}-induced excess risk of CVD hospitalization was 0.58% (95% CI: 0.04%, 1.11%) in the long-term high-level PM_{2.5} exposure group, and increased to 1.61% (95% CI: 0.95%, 2.27%) in the long-term low-level PM_{2.5} exposure group. In the subgroup analysis, males and participants aged 55–64 years showed more significant increases in the PM_{2.5}-induced risk of contracting CVDs with a reduction in greenness and fine particle exposure conditions. High residential greenness can greatly alleviate the PM_{2.5}-induced risk of cardiovascular admission. Living in the areas with long-term low-level PM_{2.5} may make people more sensitive to short-term increases in PM_{2.5}, leading to CVD hospitalization.

Keywords: cardiovascular disease; fine particulate matter; residential greenness; case-crossover study



Citation: Yang, H.; Liao, J.; Wang, J.; Yang, C.; Jiao, K.; Wang, X.; Huang, Z.; Ma, X.; Liu, X.; Liao, J.; et al. PM_{2.5}-Associated Hospitalization Risk of Cardiovascular Diseases in Wuhan: Cases Alleviated by Residential Greenness. *Int. J. Environ. Res. Public Health* **2023**, *20*, 746. <https://doi.org/10.3390/ijerph20010746>

Academic Editor: Paul B. Tchounwou

Received: 29 November 2022

Revised: 23 December 2022

Accepted: 27 December 2022

Published: 31 December 2022



Copyright: © 2022 by the authors. Licensee MDPI, Basel, Switzerland. This article is an open access article distributed under the terms and conditions of the Creative Commons Attribution (CC BY) license (<https://creativecommons.org/licenses/by/4.0/>).

1. Introduction

Cardiovascular diseases (CVDs), as the major chronic non-communicable diseases, have become the leading cause of death worldwide [1]. In China, the number of residents affected by CVDs reached 290 million [2]. The case number of the most serious CVD events (i.e., acute myocardial infarction and stroke) is expected to be increased over 21 million in the next 20 years due to an aging population, urbanization, and increased CVD risk factors [3].

Air pollution is one of the greatest environmental and public health threats of our time [4]. Particulate matter (PM) especially arouses public health concerns because of its toxicity and the widespread human exposure to this pollutant [5]. Previous epidemiological studies conducted on fine particulates and CVDs have shown an apparent association

between PM_{2.5} exposure and the morbidity and mortality of CVDs. Two cohort studies using Cox regression included 512,689 adults (from 2004 to 2017) and 116,972 adults (from 2000 to 2015), respectively, and reported excess risks of 4.0% (95% CI: 2.0%, 7.0%) [6] and 25.1% (95% CI: 22.0%, 28.3%) [7] in CVD admissions per 10 µg/m³ increase in PM_{2.5}. However, these studies mostly adopted the multi-angle implementation of atmospheric correction AOD to assess PM_{2.5} concentrations, ignoring the influence of land use type, transportation road, and other surface factors on individual exposure. In addition, these studies reported varying effect estimates. Researchers have often simply attributed these inconsistencies to different study designs, population characteristics, and countries, while ignoring the complex environmental exposures [8] (including greenness, concentration of pollutants, temperature, and noises) to the study participants.

Some studies have investigated the health benefits of green space. A meta-analysis that included 103 observational and 40 interventional studies demonstrated that increased greenspace exposure was associated with decreased risk of cardiovascular mortality (OR = 0.84; 95% CI = 0.76, 0.93) [9]. However, only a few studies have investigated the modification effects of greenness on the health hazards of air pollution, and the results have been mixed. Whether or to what extent the benefits of green space come about by reducing the harmful effects of air pollution remains unknown. A time series study using the daily number of hospital admission for analysis found that the association between air pollution (PM₁₀, PM_{2.5}) and hospitalization of cardiovascular disease was lower in areas with more green space [10]. On the contrary, a study constructed an open cohort consisting of 63 million Medicare beneficiaries, and it reported a significantly higher effect of PM_{2.5} on CVDs in greener areas when Cox-equivalent Poisson models were used for analysis [8]. Most previous studies used a regional average NDVI as the green space index, which ignored the differences in individual green space exposure, and the use of specific populations as research objects may increase the selection bias. In addition, both long-term and short-term exposures to fine particulates have been proven to be connected with increases in the morbidity and mortality of CVDs [11,12]. However, most studies have only examined the effects of a single environmental factor on CVDs which may overestimate the risk values, and further studies are needed to explore the potential modification effects between them.

Therefore, we selected residential greenness and long-term PM_{2.5} concentration as exposures, and conducted a study on PM_{2.5}-induced CVD hospitalization risks under different conditions of dual environmental factors based on the admission data of all hospitals in Wuhan. Furthermore, LUR models and NDVI maps were used to better capture individual exposure. This study aimed to assist in further interpreting the complex impacts of environmental exposure and improving our understanding of the acute effects of fine particulates on CVD hospitalization.

2. Method

2.1. Study Area and Population

Wuhan is a megacity in central China, with a land area of 8569.15 km² and a population of more than 10 million. We obtained hospitalization records from the Wuhan Health and Family Planning Information Center from 2017 to 2019. A total of 74 municipal hospitals were included in this study, and it covered nearly all hospitals in Wuhan that can receive inpatients. Sex, age, dates of admission and discharge, patient's home addresses, and primary diagnoses were extracted from each record. Cardiovascular hospital admissions were identified based on the primary diagnosis according to the International Classification of Diseases, 10th Revision (ICD-10). The following admissions were included: CVD (I00–I99), hypertension (I10–I15), coronary heart disease (I20–I25), and stroke (I60–I69). A total of 6,303,083 hospital admission records were collected from 2017 to 2019. After excluding cases with home addresses outside Wuhan and non-first-time CVD hospitalizations, we identified 499,336 CVD admissions in total. The specific inclusion and exclusion criteria are outlined in Supplementary Figure S1.

2.2. Air Pollution Assessment

Air pollution data were collected from the Wuhan Environmental Protection Bureau. The daily 24 h average concentration data for PM_{2.5} (μg/m³) from 2016 to 2019 were collected from 21 air-quality-monitoring stations. The concentrations of missing days were replaced by the average concentrations of each site for the month. In addition, we collected daily meteorological data from 2016 to 2019 from the China Meteorological Data Network.

Land use regression (LUR) models were used to estimate the PM_{2.5} concentrations in each patient's residential area. In brief, we identified many potential predictor variables based on our previous study [13], such as traffic indicators, population densities, surrounding land use, industrial pollution sources, and altitude data.

Firstly, we set up a multi-ring buffer at 21 pollutant monitoring stations to extract these potential predictors through geographic information system (ArcGIS). Multiple linear regression models were adopted to fit these predictor variables with the average PM_{2.5} concentrations at the monitoring stations from 2016 to 2019. Considering that these predictor variables change over time, and that too long a time span can reduce the accuracy of the model, we built two models to simulate PM_{2.5} concentration in the 2016–2017 years ($R^2 = 0.78$) and 2018–2019 years ($R^2 = 0.86$), respectively. Details are shown in Supplementary Table S7.

Secondly, a PM_{2.5} concentration map of 1 km spatial resolution (Figure 1b) was established by extracting the corresponding predictor variables in each grid point, calculating the predicted PM_{2.5} concentrations, and using the Kriging interpolation method.

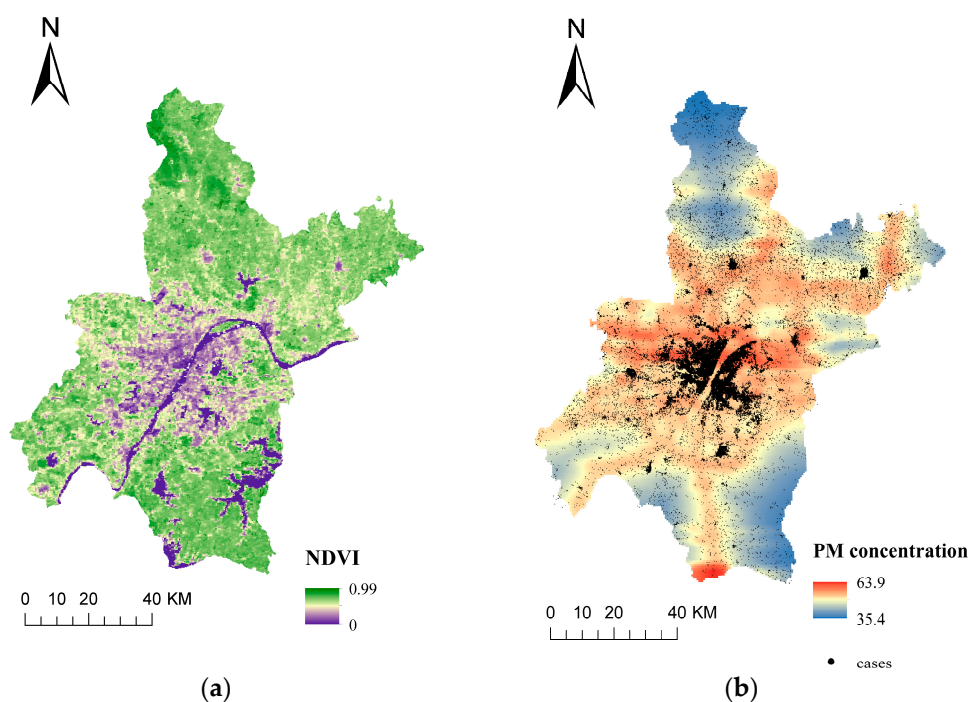


Figure 1. The normalized difference vegetation index (NDVI) of Wuhan measured from a 250 m resolution in 2017 (a). The spatial distribution of PM_{2.5} estimations across Wuhan City from 1 January 2018 to 31 December 2019 and the geocoded residential locations of the cardiovascular inpatients (b).

Finally, through the established PM_{2.5} map and individual home address, we extracted the annual PM_{2.5} concentration of each patient. Following the method described in previous studies [14], the average PM_{2.5} concentration in the year prior to the day of admission (long-term PM_{2.5} exposure) and PM_{2.5} on the day of admission (short-term PM_{2.5} exposure) were extrapolated from annual PM_{2.5} concentrations in the LUR model, adjusted for the ratio of yearly specific or daily specific PM_{2.5} to the estimated annual average PM_{2.5} at the nearest monitor.

2.3. Residential Greenness Assessment

The residential surrounding greenness was represented as the normalized difference vegetation index (NDVI). The data were derived from moderate-resolution imaging spectroradiometer (MODIS) images collected by NASA's Terra satellite. The NDVI ranges from -1 to 1 , and higher positive values represent higher greenness.

The MODIS captured the density of green vegetation at a spatial resolution of 250 m every 16 days since 2000 (product number: MOD13Q1). First, we downloaded all 16-day NDVI-gridded observations from 2017 to 2019, 70 in total, and combined them in each natural year. Second, the negative NDVI pixel values were transformed to zero; thus, the negative values would not offset the positive values in calculating the area average [15]. Third, the surrounding NDVI values within the different radial buffers (250 m and 500 m) centered on each participant's home address were calculated using ArcGIS 10.7, i.e., the average density of green vegetation within a circular buffer around a participant's residential address.

2.4. Study Design

A time-stratified case-crossover study design was used to evaluate the acute effects of $PM_{2.5}$ exposure on cardiovascular hospitalization in Wuhan. The case day was defined as the day of hospital admission, and the control days shared the same year, month, and day of the week with the case day [14]. Each case was used as his or her own control by assessing the concentration of pollutants on the control day; thus, the potential confounding effects of factors that remained constant on the case and control days were largely eliminated. Finally, 1,696,434 control days were selected from the 499,336 cardiovascular admission cases.

2.5. Analytic Model

A conditional logistic regression (CLR) model was used to obtain estimates of the percent of excess risks (ER%) and 95% confidence intervals (CIs) for the acute effects of $PM_{2.5}$ on CVD hospitalization ($ER\% = [OR - 1] \times 100\%$). The variables that fluctuate daily, such as temperature ($^{\circ}C$) and relative humidity (%), were controlled as covariates. The natural cubic spline (NCS) function with three degrees of freedom (df) was used for temperature and humidity [16].

$$\ln(h(t, x)) = \ln(h_0(t)) + \beta * PM_{2.5} + ns(temp, df = 3) + ns(rh, df = 3) \quad (1)$$

$$ER\% = (e^{\beta} - 1) * 100\% \quad (2)$$

$\ln(h(t, x))$ represents the hazard function, $\ln(h_0(t))$ represents the baseline hazard, ns represents the natural cubic spline function, df represents the degree of freedom, and β represents the relative coefficient.

Considering that a single-day lag model might underestimate the association [17], both the concentrations of $PM_{2.5}$ at single-lag (lag0 to lag3) and multi-day moving averages (lag0–1 to lag0–3) before admissions were analyzed independently in the separate model, which has the same parameter settings as the main model. The multi-day lag concentration was calculated according to the previous study. For example, lag0–2 was the moving average concentration on the present day and the previous 2 days (an average of lag0, lag1, and lag2).

We hypothesized that people who lived with different levels of residential exposures (i.e., the levels of long-term $PM_{2.5}$ exposure and residential greenness) would have different sensitivities to short-term increases in $PM_{2.5}$, or that the underlying risks of $PM_{2.5}$ would be different. To explore this phenomenon, we first classified participants into four groups based on a single environmental factor (high/low greenness and high/low long-term $PM_{2.5}$) to explore the potential modification effects. After then, we classified participants by dual environmental factors (both greenness and long-term $PM_{2.5}$) to explore the robustness of the modification effects of greenness under different levels of long-term $PM_{2.5}$. We calculated excess risks (ER%) and 95% CIs in each group separately. Furthermore, to

explore individual-level effect modifiers, we conducted a stratified analysis by classifying all CVD inpatients based on age (<45, 45–54, 55–64, and >64 years) and sex (male and female) in two groups, as well as G_HE_L (high greenness and low long-term PM_{2.5}) and G_LE_H (low greenness and high long-term PM_{2.5}).

All the analyses were conducted using R, version 4.1.0. The “Survival” package was used for the CLR analysis. Population characteristics were described using percentages, means, and standard deviations. All results of the model estimates are reported as percent of excess risk (ER%) and 95% CIs associated with each 10 µg/m³ increase in short-term PM_{2.5} concentrations.

2.6. Sensitivity Analysis

Several sensitivity analyses were performed to check the robustness of main results. (1) The average PM_{2.5} concentration in the six months before admission (such as long-term PM_{2.5} exposure) and NDVI values within 500 m were used to repeat the primary analysis. (2) A symmetric bidirectional case-crossover (CCO) design (days: ±7, 14) was used to check whether different control day selections affect the results [18]. (3) The degree of freedom (df) in the natural cubic spline (NCS) function was changed for the meteorological variables (3–6 df).

3. Results

3.1. Study Population

The basic characteristics of all the cardiovascular admissions were sub-grouped using the levels of residential greenness or the long-term PM_{2.5} concentration, as detailed in Table 1. A total of 499,336 patients who lived in Wuhan and were hospitalized for CVDs between 1 January 2017 and 31 December 2019 were enrolled. The mean age of all admissions was 65.13 years (SD = 14.84). Patients with coronary heart disease (CHD) and stroke each accounted for approximately one-third of all cardiovascular inpatients. In the total and subgroups, the proportion of males was higher than that of females. Participants over 74 years of age accounted for the largest proportion. There were no statistical differences between each subgroup among the above population characteristics, which facilitated comparability between groups.

Table 1. Basic characteristics of cardiovascular disease admissions in Wuhan (1 January 2017 to 31 December 2019).

Characteristics	Cardiovascular Disease (n = 499,336)				
	All (n = 499,336)	^a Low Greenness (n = 249,438)	High Greenness (n = 249,898)	^b High Long-Term PM _{2.5} (n = 249,337)	Low Long-Term PM _{2.5} (n = 249,999)
Age [mean ± SD (years)]	65.13 ± 14.84	65.48 ± 14.84	64.79 ± 14.84	65.03 ± 14.74	65.24 ± 14.95
Age group [n (%)]					
<45 years	41,027 (8.2)	19,573 (7.9)	21,454 (8.6)	20,460 (8.2)	20,567 (8.2)
45–54 years	65,386 (13.1)	31,981 (12.8)	33,405 (13.4)	32,181 (12.9)	33,205 (13.3)
55–64 years	124,713 (24.9)	63,972 (25.7)	60,741 (24.3)	61,983 (24.9)	62,730 (25.1)
65–74 years	128,791 (25.8)	61,506 (24.7)	67,285 (26.9)	67,633 (27.1)	61,158 (24.5)
>74 years	139,419 (27.9)	72,406 (29.0)	67,013 (26.8)	67,080 (26.9)	72,339 (28.9)
Sex [n (%)]					
Male	273,082 (54.6)	136,711 (54.8)	136,371 (54.6)	135,572 (54.4)	137,510 (55.1)
Female	226,254 (46.4)	112,727 (46.2)	113,527 (45.4)	113,765 (45.6)	112,489 (44.9)
^c Sub-diagnoses [n (%)]					
Hypertension	76,965 (15.4)	39,688 (15.9)	37,277 (14.9)	36,234 (14.5)	40,731 (16.3)
CHD	144,536 (28.9)	75,069 (30.1)	69,467 (27.8)	69,780 (28.0)	74,756 (29.9)
Stroke	164,390 (32.9)	79,737 (32.0)	84,653 (33.9)	86,573 (34.7)	77,817 (31.1)

^a Low- and high-greenness levels were divided by the median of all participants’ NDVIs within 250 m. ^b Low and high long-term PM_{2.5} values were divided by the median of all participants’ long-term PM_{2.5} concentrations (1 year). ^c Hypertension (I10–I15). CHD, coronary heart disease (I20–I25). Stroke (I60–I69).

3.2. Residential Greenness and PM_{2.5} Assessment

The map showing the NDVIs and PM_{2.5} concentrations simulated by the LUR model is shown in Figure 1. The levels of greenness surrounding the residential area varied significantly. For example, the NDVI within 250 m of the cardiovascular admissions’

residential area ranged from 0.001 to 0.986 (median: 0.43; IQR: 0.14) (Figure 1a). The values and distributions of the NDVI in Wuhan changed slightly in 2017, 2018, and 2019, and the average annual NDVI values were 0.66, 0.67, and 0.64, respectively.

The PM_{2.5} data used for the LUR modeling in this study included the years 2016, 2017, 2018, and 2019. Therefore, for patients admitted in 2017, we were able to calculate their long-term PM_{2.5} concentrations in the year prior to admission. Figure 1b shows the map of PM_{2.5} concentration modeled by LUR. The average concentrations of estimated PM_{2.5} for short-term and long-term exposures were 44.8 µg/m³ (SD = 27.8 µg/m³) and 46.9 µg/m³ (SD = 4.7 µg/m³), respectively (Supplementary Table S1).

3.3. Primary Model Results

A lag analysis was conducted between PM_{2.5} and cardiovascular admissions (Table 2). The highest risk estimates were found at lag2 and lag0–2 for the single-day lags and multi-day lags, respectively. Moreover, the cumulative lag model typically had higher estimates than that of the single-day exposure. Thus, in the following analyses, we focused on lag0–2 as the exposure period to evaluate the short-term effects of PM_{2.5}.

Table 2. ER% and 95% CI of hospitalization risks for cardiovascular diseases associated with every 10 µg/m³ increase in short-term PM_{2.5} using different lag days.

Lag	Total CVD	Hypertension	CHD	Stroke
lag0–3	0.64(0.42,0.86)	0.29(−0.26,0.84)	0.9(0.48,1.31)	0.58(0.18,0.97)
lag0–2	0.78 (0.58, 0.99)	0.53 (0.03, 1.04)	1.01 (0.62, 1.39)	0.69 (0.32, 1.06)
lag0–1	0.57 (0.38, 0.75)	0.26 (−0.19, 0.72)	0.75 (0.41, 1.10)	0.58 (0.25, 0.91)
lag3	−0.07(−0.23,0.08)	−0.17(−0.56,0.23)	0.05(−0.25,0.34)	−0.07(−0.35,0.22)
lag2	0.48 (0.32, 0.64)	0.57 (0.17, 0.98)	0.62 (0.32, 0.92)	0.23 (−0.06, 0.53)
lag1	0.45 (0.29, 0.61)	0.34 (−0.06, 0.75)	0.64 (0.34, 0.95)	0.32 (0.03, 0.61)
lag0	0.34 (0.18, 0.50)	0.10 (−0.29, 0.49)	0.42 (0.13, 0.72)	0.45 (0.16, 0.73)

Abbreviations: The statistically significant estimates are highlighted in bold. CHD, coronary heart disease. CVD, cardiovascular disease. lag0–3, the moving average concentration on the present day and the previous 3 days. lag0–2, the moving average concentration on the present day and the previous 2 days. lag0–1, the moving average concentration on the present day and the previous day.

As shown in Table 2, the short-term effects of PM_{2.5} exposure were significant in the total CVD admissions at all lag models except lag3. The ER% per 10 µg/m³ increase in lag0–2 of PM_{2.5} for the total CVD admissions was 0.78% (95% CI: 0.58%, 0.99%). For the specific subtypes, the PM_{2.5}-induced hospitalization risk of CHD was particularly pronounced, and each 10 µg/m³ increase in PM_{2.5} at lag0–2 was associated with a 1.01% (95% CI: 0.62%, 1.39%) increase in hospital admissions for CHD. All the effect estimates remained robust when we used a symmetric case-crossover design (days: ±7, 14) or changed the degree of freedom (df) in the natural cubic spline (NCS) function for the meteorological variables from 3 to 6 (Supplementary Tables S2 and S3).

3.4. Modification Effects of Greenness

Table 3 shows the modification effects of residential exposure factors (greenness and long-term PM_{2.5}) on PM_{2.5}-associated CVD hospitalization risks. Intriguingly, we found that greenness alleviates PM_{2.5}-induced CVD risks; in addition, lower and insignificant increases in the hospital admissions of total CVD events and subtypes of CVD were found in the high-greenness groups compared to the low-greenness groups (Table 3). For example, every 10 µg/m³ increase in lag0–2 of PM_{2.5} was associated with a 0.99% increase in total CVD hospital admissions (95% CI: 0.71%, 1.28%) in the low-greenness area and a 0.45% increase (95% CI: 0.13%, 0.77%) in the high-greenness area. After using the NDVI within 500 m as residential greenness, the alleviating effects of greenness remained robust in total CVD events and subtypes of CVDs (Supplementary Table S4). On the other hand, no significant change in estimated effects was identified in the total CVD admissions between the low and high long-term PM_{2.5} exposure groups.

Table 3. ER% and 95% CIs of hospitalization risk for cardiovascular diseases associated with every 10 $\mu\text{g}/\text{m}^3$ increase in short-term $\text{PM}_{2.5}$ at lag0–2: stratified by single environmental factors.

Residential Exposure Factors	^a Level of Residential Exposure	Total CVD	Hypertension	CHD	Stroke
Greenness	Low	0.99 (0.71, 1.28)	0.87 (0.16, 1.59)	1.36 (0.84, 1.89)	0.84 (0.31, 1.37)
	High	0.45 (0.13, 0.77)	0.14 (−0.58, 0.87)	0.63 (0.09, 1.17)	0.55 (0.04, 1.06)
Long-term $\text{PM}_{2.5}$	Low	0.73 (0.41, 1.06)	0.69 (−0.14, 1.53)	0.67 (0.05, 1.29)	0.56 (0.01, 1.12)
	High	0.70 (0.43, 0.97)	0.32 (−0.33, 0.97)	1.11 (0.61, 1.61)	0.66 (0.16, 1.16)

Abbreviations: The statistically significant estimates are highlighted in bold. CHD, coronary heart disease. CVD, cardiovascular disease. lag0–2, the moving average concentration on the present day and the previous 2 days. ^a Low and high levels of residential exposure were divided by the median of all participants' NDVIs within 250 m and long-term $\text{PM}_{2.5}$ concentration (1 year).

We then classified the participants by using both the NDVI quartiles and the median of the long-term $\text{PM}_{2.5}$ (Table 4). In general, the modification effects of greenness on total CVD and CHD admissions were still robust regardless of high or low levels of long-term $\text{PM}_{2.5}$ exposure. The effect estimates for the increases in hospitalization became lower and insignificant in greener areas (quartile 3 and quartile 4) compared to less green areas (quartile 1 and quartile 2). With the increase in greenness, the excess risk of CVD hospital admissions declined from 1.61% to 0.39% (Q1 to Q4) in low-level long-term $\text{PM}_{2.5}$ areas and 1.19% to 0.01% (Q2 to Q4) in high-level long-term $\text{PM}_{2.5}$ areas. In the greenest areas (quartile 4), no significant increase in $\text{PM}_{2.5}$ -induced hospitalization risks for total CVD events or subtypes of CVD was identified. Moreover, a significant modification effect of long-term $\text{PM}_{2.5}$ exposure was found in the least green areas (quartile 1) (Table 4). Every 10 $\mu\text{g}/\text{m}^3$ increase in lag0–2 of $\text{PM}_{2.5}$ was associated with 1.98% (95% CI: 0.39%, 3.60%) and 1.32% (95% CI: 0.20%, 2.61%) increases in hospital admissions for hypertension and stroke cases in areas with long-term low-level $\text{PM}_{2.5}$ exposure and the least amount of greenness. However, no significant increases were found in the corresponding high-level long-term $\text{PM}_{2.5}$ exposure areas. We reached the same conclusion as above when the NDVI within 500 m and six-month long-term concentrations were used to define dual environmental factors (Supplementary Table S5).

Table 4. ERs% and 95% CIs of hospitalization risks for cardiovascular diseases per 10 $\mu\text{g}/\text{m}^3$ increase in the lag0–2 of short-term $\text{PM}_{2.5}$, stratified by dual environmental factors.

Admissions	^a Long-Term $\text{PM}_{2.5}$ Level	^b Residential Greenness			
		Quartile 1 (Least Green)	Quartile 2	Quartile 3	Quartile 4 (Greenest)
Total CVD	Low	1.61 (0.95, 2.27)	0.87 (0.23, 1.52)	0.35 (−0.30, 1.00)	0.39 (−0.30, 1.09)
	High	0.58 (0.04, 1.11)	1.19 (0.66, 1.73)	0.66 (0.13, 1.20)	0.01 (−0.56, 0.59)
Hypertension	Low	1.98 (0.39, 3.60)	−0.03 (−1.62, 1.58)	0.47 (−1.09, 2.05)	0.26 (−1.56, 2.12)
	High	0.27 (−1.01, 1.56)	1.10 (−0.19, 2.40)	0.44 (−0.84, 1.74)	−0.70 (−2.17, 0.80)
CHD	Low	1.23 (0.03, 2.44)	0.79 (−0.40, 2.00)	0.66 (−0.52, 1.85)	0.74 (−0.62, 2.12)
	High	1.17 (0.20, 2.15)	1.84 (0.87, 2.82)	1.04 (0.08, 2.02)	−0.44 (−1.55, 0.68)
Stroke	Low	1.32 (0.15, 2.50)	0.94 (0.10, 1.78)	0.77 (−0.39, 1.94)	0.51 (−0.65, 1.69)
	High	0.38 (−0.58, 1.34)	0.69 (−0.27, 1.66)	−0.79 (−1.95, 0.38)	0.80 (−0.17, 1.77)

Abbreviations: The statistically significant estimates are highlighted in bold. CHD, coronary heart disease. CVD, cardiovascular disease. lag0–2, the moving average concentration on the present day and the previous 2 days. ^a Low and high long-term $\text{PM}_{2.5}$ values were divided by the median of all participants' long-term $\text{PM}_{2.5}$ concentrations (1 year). ^b Divided into four parts based on the quartile of all participants' NDVIs within 250 m.

3.5. Stratification Analysis

The subgroup analyses stratified by age and gender were conducted in G_{HE_L} and G_{LE_H} . The PM -induced risks of CVD were found to be higher in G_{LE_H} (areas with low greenness and long-term high-level $\text{PM}_{2.5}$) than in G_{HE_L} (areas with high greenness and long-term low-level $\text{PM}_{2.5}$) in nearly all gender and age groups (Figure 2 and

Supplementary Table S6). In the age-specific analysis, risk estimates for the total and cause-specific CVD admissions increased significantly from the G_{HE_L} to the G_{LE_H} in the group aged 55–64 years, and the increase for the total CVD admissions was 1.29% (95% CI: 0.56%, 2.02%) in the G_{LE_H} and further declined to -0.84% (95% CI: -1.72% , 0.05%) in the G_{HE_L} . In the gender-specific analysis, the difference in the risk estimates between the G_{HE_L} and the G_{LE_H} was more significant in males than in females. The increase for total CVD admissions in the male group was 0.97% (95% CI: -0.48% , 1.47%) in the G_{LE_H} and declined to 0.31% (95% CI: -0.29% , 0.91%) in the G_{HE_L} . Moreover, the same sensitivity group of age (55–64 years) was identified in the stratified analysis conducted in high-greenness and low-greenness groups (Supplementary Figure S2).

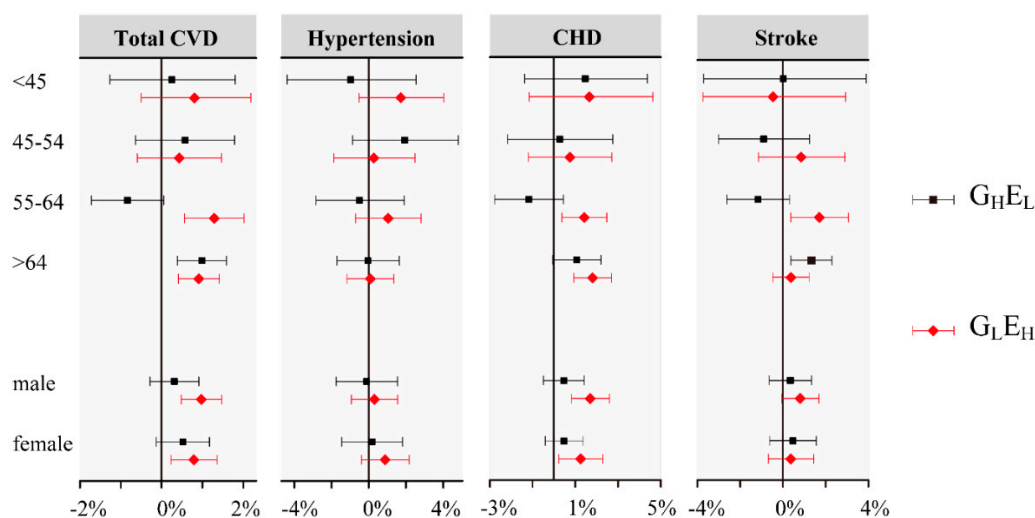


Figure 2. ER% (95% CI) of hospitalization risks for cardiovascular diseases per $10 \mu\text{g}/\text{m}^3$ increase in the lag0–2 of $\text{PM}_{2.5}$ stratified by age and gender in G_{HE_L} and G_{LE_H} . Abbreviation: G_{HE_L} , high-greenness and long-term low-level $\text{PM}_{2.5}$ exposure; G_{LE_H} , low-greenness and long-term high-level $\text{PM}_{2.5}$ exposure.

4. Discussion

To our knowledge, this is one of the few studies to evaluate the acute effects of $\text{PM}_{2.5}$ on CVD hospital admissions based on an entire population of a megalopolis. The results of our study showed a significant $\text{PM}_{2.5}$ -induced risk of total CVD events and specific subtypes (i.e., hypertension, CHD, and stroke) of CVD. Regarding the residential exposures, greenness has a strong alleviating effect on CVD admission risks attributed to $\text{PM}_{2.5}$ regardless of long-term high or low levels of $\text{PM}_{2.5}$ exposure.

Our results on the adverse effects of $\text{PM}_{2.5}$ exposure on CVD admission are consistent with several studies which focus on other areas of China [6] and developed countries [19,20]. Our result of the lag analysis showed that the effect estimates were higher when using the moving average lag model than that of single-day exposure, with the highest effects found in lag0–2. Similar to previous studies conducted in England [20] and Denmark [21], the highest harmful effects of particulate matter on CVD admissions were found at lag0–5 and lag0–4, respectively. A toxicological study reported that Interleukin (IL)-6 and tumor necrosis factor alpha showed a significant increase with a lag of two days in association with an increase in $\text{PM}_{2.5}$. This result may suggest that consecutive days of air pollution were connected with a greater risk of cardiovascular admissions. Of note, the short-term effects of $\text{PM}_{2.5}$ on CHD (1.01%, 95% CI, 0.62–1.39) seemed to be the greatest in our study. Mechanistic studies have demonstrated that PM can accelerate the progression of atherosclerosis; promote the formation of thrombosis; and increase the susceptibility to CHD by increasing oxidative stress, endothelial dysfunction, and blood viscosity [22,23].

Our findings on the modification effects of greenness are novel. The $\text{PM}_{2.5}$ -induced increase in CVD hospitalizations became lower and insignificant in greener areas compared

to less green areas. Moreover, such alleviating effects were found in areas with both low and high long-term PM_{2.5} concentrations. This may indicate that the modification effects of green space are not, or at least not only, generated by reducing air pollution concentrations. Similar modifying effects of greenness on the association of PM_{2.5} and CVD have been previously reported. A study conducted in the USA that included 364 counties found that the association between air pollution and cardiovascular hospitalization was less significant in areas with higher residential greenness levels, with a 0.18% decrease in the effect estimates (95% CI: −0.39, 0.73) when the NDVI increased with an interquartile range [10]. Yitshak et al. proved that the effects of PM_{2.5} on CVD mortalities were attenuated by higher residential green space levels in areas with a lower socioeconomic status [24]. In addition, a study conducted by the Chinese Elderly Health Service Cohort from 1998 to 2011 found that the PM-induced mortality risk of pneumonia showed a decreasing trend (p for trend = 0.034) as the green quartile increased from quartile 1 (lowest) to quartile 4 (highest) [25]. To our knowledge, possible mechanisms by which green space exerts its health benefits are as below. Urban trees and shrubs could mitigate personal, home-indoor, and home-outdoor PM levels by serving as efficient biological filters and accelerating the deposition of pollutants [26–28]. Residential greenness may provide a buffer against the negative health impact of stressful life events, as well as promote outdoor physical activity and social contact [29,30]. Studies have demonstrated that urban parks had a cooling effect on the surrounding environment and reduce heat exposure [31]. This might be important because warmer urban climates have been proven to increase the risks of air-pollution-related diseases [32].

Regarding the modifying effects of the long-term PM_{2.5} exposure, the acute effects of PM_{2.5} on hypertension and stroke were stronger in areas with long-term low-level PM_{2.5} exposures when the NDVI was limited to quartile 1. The results from other studies are also consistent those reported in our study. In a study of 652 cities, stronger associations were observed between particulate matter and all-cause mortality in areas with lower annual mean concentrations of PM and higher annual mean temperature [5]. Similarly, Chen R et al. reported that the cities in China with low levels of PM₁₀ (from 52 to 98 µg/m³) exhibited a risk estimate value that is two to three times higher than those with middle (from 101 to 121 µg/m³) or high (130 to 144 µg/m³) levels of PM₁₀ [12]. This can be explained by the fact that the adaptive response to PM in populations living in areas with high levels of PM long-term exposures may lead to smaller estimate changes per unit [5]. This finding may partly explain the higher rates of CVD admission in developed countries.

The stratified analysis of age and gender showed stronger modifying effects of residential environments in participants aged between 55 and 64 years and in males. Vienneau et al. found a protective effect of residential greenness on the natural-cause mortality that was stronger in younger individuals and males in Switzerland [33]. Their findings did not contradict our results since we focused on CVDs, which is a major health concern among the aging population. Additionally, we focused on hospitalization rates instead of mortality rates. Heo et al. conducted a study on the hospitalization of older people in the USA and found that the 65–74 years age group might have the biggest decrease in PM₁₀-related hospitalization risk [10], and this result was similar to our findings. In addition, males generally engage in more weekly physical activity outside [34], which may be why they benefit more from a better residential environment [35].

Considering that previous studies were primarily conducted in developed countries with exposure to low-level PM, the use of Wuhan as a research area provides possible ways of understanding the acute effects of PM and the modifying role of residential environmental factors in a wide range of PM concentrations. Several approaches were used to reduce the study bias and improve accuracy and precision. First, we obtained the hospitalization admission data of 74 hospitals in Wuhan to evaluate PM_{2.5} admission relationships. The possibility of selection bias was minimized, and the results could be generalized to the entire city and all age groups. Second, a case-crossover design with a large sample size was used that was controlled for long-term trends and known

or unknown time-invariant covariates (e.g., socioeconomic status and genetics). Third, the application of the LUR model improved the accuracy of the spatial variation of the individual PM_{2.5} exposure.

This study had several limitations as well. First, we were unable to directly measure personal air pollution and greenness exposure levels. Alternatively, we estimated the individual air pollution exposure concentrations and residential greenness by using the home address of each participant. This may lead to exposure misclassification. Second, we measured residential greenness via the NDVI which represents the quantity but not the quality of greenness space. Third, we used inpatient data rather than outpatient data, and this might exclude some patients with mild symptoms, thus underestimating the risk of PM_{2.5} exposure. Fourth, only two residential environmental exposure factors (residential greenness and PM_{2.5}) were evaluated in this study, and the confounding effects caused by other environmental factors such as noise and air pollution emission sources could not be controlled. Further studies are needed to identify and demonstrate the alleviating effects of greenness on air pollution hazards.

5. Conclusions

We found that short-term exposure to PM_{2.5} was significantly associated with an increased risk of CVD admission, hypertension, stroke, and CHD hospitalizations. Residential greenness could mitigate the negative effects of PM_{2.5} on CVDs, and the modification effects were robust regardless of long-term high or low levels of PM_{2.5} exposure. In addition, living in areas with long-term low-level PM_{2.5} concentrations and low greenness may make people more sensitive to short-term increases in PM_{2.5}, leading to CVD admissions. Our findings add more evidence that helps us understand the acute adverse effects of PM_{2.5} and the modifying effects of residential environmental exposure. The results of this study can assist public agencies in developing strategies for air pollution control, disease prevention, and green construction.

Supplementary Materials: The following supporting information can be downloaded at: <https://www.mdpi.com/article/10.3390/ijerph20010746/s1>, Figure S1. Flowchart of the selection process for the study population. Figure S2. ER% (95% CI) of the CVD admissions per 10 µg/m³ increase in the lag0–2 of PM_{2.5} stratified by age and gender in high and low greenness areas. Table S1. Distribution of exposure to fine particulate (PM_{2.5}) matter and natural conditions on case days. Table S2. ER% and 95% CI of hospitalization risk for cardiovascular diseases associated with every 10 µg/m³ increase in lag0-2 of short-term PM_{2.5} using different df of natural cubic spline (NCS) function for the meteorological variables (3–6 df). Table S3. ER% and 95% CI of hospitalization risk for cardiovascular diseases associated with every 10 µg/m³ increase in short-term PM_{2.5} using different lag days. Table S4. ERs% and 95% CI of cardiovascular hospitalization per 10 µg/m³ increase in 3-day moving average (lag 0-2) concentration of PM_{2.5} in the low and high residential greenness areas divided by levels of greenness ^a. Table S5. ERs% and 95% CI of hospitalization risk for cardiovascular diseases associated with every 10 µg/m³ increase in short-term PM_{2.5} at lag0-2: stratified by dual environmental factors. Table S6. ERs% and 95% CI of the cardiovascular hospitalizations per 10 µg/m³ increase in the PM_{2.5} at lag0-2 stratified by gender and age in the G_HE_L and the G_LE_H. Table S7. Description of Developed LUR models for PM_{2.5} in different year.

Author Contributions: H.Y. and J.L. (Jianpeng Liao) analyzed the data and drafted the initial manuscript. H.Y. and J.L. (Jianpeng Liao) contributed equally to this paper. X.L. provided the initial data. C.Y., J.W., K.J., X.W., Z.H. and X.M. contributed to data interpretation and manuscript preparation. J.L. (Jingling Liao) provided important comments while developing the manuscript. L.M. was responsible for the study's design, implementation, and analysis. All authors have read and agreed to the published version of the manuscript.

Funding: This research did not receive any specific grant from funding agencies in the public, commercial, or non-profit sectors.

Institutional Review Board Statement: This study was performed in accordance with the Declaration of Helsinki, and approved by Medical Ethics Committee, School of Public Health, Wuhan University. Before the study, we have deleted all information that may reveal personal privacy, such as name, phone number and ID number.

Informed Consent Statement: Not applicable.

Data Availability Statement: The data that support the findings of this study are available from the Wuhan Information Center of Health and Family Planning, but restrictions apply to the availability of these data, which were used under license for the current study, and so are not publicly available. Data are however available from the authors upon reasonable request and with permission of the Wuhan Information Center of Health and Family Planning.

Conflicts of Interest: The authors declare that they have no known competing financial interests or personal relationships that could have appeared to influence the work reported in this paper.

References

1. James, S.L.; Abate, D.; Abate, K.H.; Abay, S.M.; Abbafati, C.; Abbasi, N.; Abbastabar, H.; Abd-Allah, F.; Abdela, J.; Abdelalim, A.; et al. Global, regional, and national incidence, prevalence, and years lived with disability for 354 diseases and injuries for 195 countries and territories, 1990–2017: A systematic analysis for the Global Burden of Disease Study 2017. *Lancet* **2018**, *392*, 1789–1858. [[CrossRef](#)] [[PubMed](#)]
2. Zhao, D.; Liu, J.; Wang, M.; Zhang, X.; Zhou, M. Epidemiology of cardiovascular disease in China: Current features and implications. *Nat. Rev. Cardiol.* **2019**, *16*, 203–212. [[CrossRef](#)] [[PubMed](#)]
3. Moran, A.; Gu, D.; Zhao, D.; Coxson, P.; Wang, Y.C.; Chen, C.S.; Liu, J.; Cheng, J.; Bibbins-Domingo, K.; Shen, Y.M.; et al. Future cardiovascular disease in china: Markov model and risk factor scenario projections from the coronary heart disease policy model-china. *Circ. Cardiovasc. Qual. Outcomes* **2010**, *3*, 243–252. [[CrossRef](#)] [[PubMed](#)]
4. Holgate, S. Air pollution is a public health emergency. *BMJ (Clin. Res. Ed.)* **2022**, *378*, o1664. [[CrossRef](#)]
5. Liu, C.; Chen, R.; Sera, F.; Vicedo-Cabrera, A.M.; Guo, Y.; Tong, S.; Coelho, M.; Saldiva, P.H.N.; Lavigne, E.; Matus, P.; et al. Ambient Particulate Air Pollution and Daily Mortality in 652 Cities. *N. Engl. J. Med.* **2019**, *381*, 705–715. [[CrossRef](#)]
6. Liu, C.; Chan, K.H.; Lv, J.; Lam, H.; Newell, K.; Meng, X.; Liu, Y.; Chen, R.; Kartsonaki, C.; Wright, N.; et al. Long-Term Exposure to Ambient Fine Particulate Matter and Incidence of Major Cardiovascular Diseases: A Prospective Study of 0.5 Million Adults in China. *Environ. Sci. Technol.* **2022**, *56*, 13200–13211. [[CrossRef](#)]
7. Liang, F.; Liu, F.; Huang, K.; Yang, X.; Li, J.; Xiao, Q.; Chen, J.; Liu, X.; Cao, J.; Shen, C.; et al. Long-Term Exposure to Fine Particulate Matter and Cardiovascular Disease in China. *J. Am. Coll. Cardiol.* **2020**, *75*, 707–717. [[CrossRef](#)]
8. Klompaker, J.O.; Hart, J.E.; James, P.; Sabath, M.B.; Wu, X.; Zanobetti, A.; Dominici, F.; Laden, F. Air pollution and cardiovascular disease hospitalization—Are associations modified by greenness, temperature and humidity? *Environ. Int.* **2021**, *156*, 106715. [[CrossRef](#)]
9. Twohig-Bennett, C.; Jones, A. The health benefits of the great outdoors: A systematic review and meta-analysis of greenspace exposure and health outcomes. *Environ. Res* **2018**, *166*, 628–637. [[CrossRef](#)]
10. Heo, S.; Bell, M.L. The influence of green space on the short-term effects of particulate matter on hospitalization in the U.S. for 2000–2013. *Environ. Res.* **2019**, *174*, 61–68. [[CrossRef](#)]
11. Zheng, C.; Tang, H.; Wang, X.; Chen, Z.; Zhang, L.; Kang, Y.; Yang, Y.; Chen, L.; Zhou, H.; Cai, J.; et al. Left ventricular diastolic dysfunction and cardiovascular disease in different ambient air pollution conditions: A prospective cohort study. *Sci. Total Environ.* **2022**, *831*, 154872. [[CrossRef](#)] [[PubMed](#)]
12. Chen, R.; Kan, H.; Chen, B.; Huang, W.; Bai, Z.; Song, G.; Pan, G.; Group, C.C. Association of particulate air pollution with daily mortality: The China Air Pollution and Health Effects Study. *Am. J. Epidemiol.* **2012**, *175*, 1173–1181. [[CrossRef](#)]
13. Huang, Z.H.; Liu, X.Y.; Zhao, T.; Jiao, K.Z.; Ma, X.X.; Ren, Z.; Qiu, Y.F.; Liao, J.L.; Ma, L. Short-term effects of air pollution on respiratory diseases among young children in Wuhan city, China. *World J. Pediatr. WJP* **2022**, *18*, 333–342. [[CrossRef](#)] [[PubMed](#)]
14. Ren, Z.; Liu, X.; Liu, T.; Chen, D.; Jiao, K.; Wang, X.; Suo, J.; Yang, H.; Liao, J.; Ma, L. Effect of ambient fine particulates (PM_{2.5}) on hospital admissions for respiratory and cardiovascular diseases in Wuhan, China. *Respir. Res.* **2021**, *22*, 128. [[CrossRef](#)] [[PubMed](#)]
15. Reid, C.E.; Kubzansky, L.D.; Li, J.; Shmool, J.L.; Clougherty, J.E. It's not easy assessing greenness: A comparison of NDVI datasets and neighborhood types and their associations with self-rated health in New York City. *Health Place* **2018**, *54*, 92–101. [[CrossRef](#)] [[PubMed](#)]
16. Chen, C.; Liu, C.; Chen, R.; Wang, W.; Li, W.; Kan, H.; Fu, C. Ambient air pollution and daily hospital admissions for mental disorders in Shanghai, China. *Sci. Total Environ.* **2018**, *613–614*, 324–330. [[CrossRef](#)] [[PubMed](#)]
17. Xu, Q.; Li, X.; Wang, S.; Wang, C.; Huang, F.; Gao, Q.; Wu, L.; Tao, L.; Guo, J.; Wang, W.; et al. Fine Particulate Air Pollution and Hospital Emergency Room Visits for Respiratory Disease in Urban Areas in Beijing, China, in 2013. *PLoS ONE* **2016**, *11*, e0153099. [[CrossRef](#)]

18. Carracedo-Martínez, E.; Taracido, M.; Tobias, A.; Saez, M.; Figueiras, A. Case-crossover analysis of air pollution health effects: A systematic review of methodology and application. *Environ. Health Perspect.* **2010**, *118*, 1173–1182. [[CrossRef](#)]
19. Hsu, W.H.; Hwang, S.A.; Kinney, P.L.; Lin, S. Seasonal and temperature modifications of the association between fine particulate air pollution and cardiovascular hospitalization in New York state. *Sci. Total Environ.* **2017**, *578*, 626–632. [[CrossRef](#)]
20. Qiu, X.; Wei, Y.; Wang, Y.; Di, Q.; Sofer, T.; Awad, Y.A.; Schwartz, J. Inverse probability weighted distributed lag effects of short-term exposure to PM(2.5) and ozone on CVD hospitalizations in New England Medicare participants—Exploring the causal effects. *Environ. Res.* **2020**, *182*, 109095. [[CrossRef](#)]
21. Andersen, Z.J.; Olsen, T.S.; Andersen, K.K.; Loft, S.; Kettel, M.; Raaschou-Nielsen, O. Association between short-term exposure to ultrafine particles and hospital admissions for stroke in Copenhagen, Denmark. *Eur. Heart J.* **2010**, *31*, 2034–2040. [[CrossRef](#)] [[PubMed](#)]
22. Sørensen, M.; Daneshvar, B.; Hansen, M.; Dragsted, L.O.; Hertel, O.; Knudsen, L.; Loft, S. Personal PM2.5 exposure and markers of oxidative stress in blood. *Environ. Health Perspect.* **2003**, *111*, 161–166. [[CrossRef](#)] [[PubMed](#)]
23. Zhao, J.; Xie, Y.; Qian, X.; Jiang, R.; Song, W. Acute effects of fine particles on cardiovascular system: Differences between the spontaneously hypertensive rats and wistar kyoto rats. *Toxicol. Lett.* **2010**, *193*, 50–60. [[CrossRef](#)] [[PubMed](#)]
24. Yitshak-Sade, M.; James, P.; Kloog, I.; Hart, J.E.; Schwartz, J.D.; Laden, F.; Lane, K.J.; Fabian, M.P.; Fong, K.C.; Zanobetti, A. Neighborhood Greenness Attenuates the Adverse Effect of PM2.5 on Cardiovascular Mortality in Neighborhoods of Lower Socioeconomic Status. *Int. J. Environ. Res. Public Health* **2019**, *16*, 814. [[CrossRef](#)]
25. Xu, R.; Li, S.; Li, S.; Wong, E.M.; Southey, M.C.; Hopper, J.L.; Abramson, M.J.; Guo, Y. Residential surrounding greenness and DNA methylation: An epigenome-wide association study. *Environ. Int.* **2021**, *154*, 106556. [[CrossRef](#)]
26. Dadvand, P.; de Nazelle, A.; Triguero-Mas, M.; Schembari, A.; Cirach, M.; Amoly, E.; Figueras, F.; Basagaña, X.; Ostro, B.; Nieuwenhuijsen, M. Surrounding greenness and exposure to air pollution during pregnancy: An analysis of personal monitoring data. *Environ. Health Perspect.* **2012**, *120*, 1286–1290. [[CrossRef](#)]
27. Chen, J.; Yu, X.; Bi, H.; Fu, Y. Indoor simulations reveal differences among plant species in capturing particulate matter. *PLoS ONE* **2017**, *12*, e0177539. [[CrossRef](#)]
28. Sæbø, A.; Popek, R.; Nawrot, B.; Hanslin, H.M.; Gawronska, H.; Gawronski, S.W. Plant species differences in particulate matter accumulation on leaf surfaces. *Sci. Total Environ.* **2012**, *427–428*, 347–354. [[CrossRef](#)]
29. van den Berg, A.E.; Maas, J.; Verheij, R.A.; Groenewegen, P.P. Green space as a buffer between stressful life events and health. *Soc. Sci. Med.* **2010**, *70*, 1203–1210. [[CrossRef](#)]
30. James, P.; Banay, R.F.; Hart, J.E.; Laden, F. A Review of the Health Benefits of Greenness. *Curr. Epidemiol. Rep.* **2015**, *2*, 131–142. [[CrossRef](#)]
31. Aram, F.; Higuera García, E.; Solgi, E.; Mansournia, S. Urban green space cooling effect in cities. *Heliyon* **2019**, *5*, e01339. [[CrossRef](#)] [[PubMed](#)]
32. Sun, S.; Tian, L.; Cao, W.; Lai, P.C.; Wong, P.P.Y.; Lee, R.S.; Mason, T.G.; Krämer, A.; Wong, C.M. Urban climate modified short-term association of air pollution with pneumonia mortality in Hong Kong. *Sci. Total Environ.* **2019**, *646*, 618–624. [[CrossRef](#)]
33. Vienneau, D.; de Hoogh, K.; Faeh, D.; Kaufmann, M.; Wunderli, J.M.; Roosli, M.; Group, S.N.C.S. More than clean air and tranquillity: Residential green is independently associated with decreasing mortality. *Environ. Int.* **2017**, *108*, 176–184. [[CrossRef](#)] [[PubMed](#)]
34. Mozaffarian, D.; Hao, T.; Rimm, E.B.; Willett, W.C.; Hu, F.B. Changes in diet and lifestyle and long-term weight gain in women and men. *N. Engl. J. Med.* **2011**, *364*, 2392–2404. [[CrossRef](#)] [[PubMed](#)]
35. Fuzeki, E.; Engeroff, T.; Banzer, W. Health Benefits of Light-Intensity Physical Activity: A Systematic Review of Accelerometer Data of the National Health and Nutrition Examination Survey (NHANES). *Sports Med.* **2017**, *47*, 1769–1793. [[CrossRef](#)]

Disclaimer/Publisher’s Note: The statements, opinions and data contained in all publications are solely those of the individual author(s) and contributor(s) and not of MDPI and/or the editor(s). MDPI and/or the editor(s) disclaim responsibility for any injury to people or property resulting from any ideas, methods, instructions or products referred to in the content.