

Supplementary Figures

	Sample representativeness	Blinding	Exposure assessment	Outcome assessment	Confounding	Incomplete outcome data	Selective outcome reporting	Conflict of interest	Other sources of bias
Alemayehu B, 2020	?	?	+	+	+	?	+	+	-
Andhikaputra G, 2023	+	+	+	+	+	+	+	+	-
Atchison C J, 2010	+	?	+	+	+	?	+	+	-
Azage M, 2017	+	-	+	+	+	+	+	+	-
Berendes. M, 2019	+	+	+	+	+	+	+	+	+
Bhandari D, 2020	+	+	+	+	+	+	+	+	+
Bhavnani D, 2014	+	+	+	+	+	+	+	+	+
Bush. F K, 2014	?	+	+	+	+	?	+	+	-
Delahoy J. M, 2021	+	?	+	+	+	+	+	+	-
Dharmayanti I, 2022	?	?	+	+	?	+	+	+	-
Dhimal M, 2016	+	?	+	+	+	+	+	+	-
Dhimal M, 2022	+	+	+	+	+	+	+	+	+
Dinku M, 2022	+	+	+	+	+	+	+	+	+
D'souza R. M, 2008	+	?	+	+	+	+	+	+	-
Gleason JA, 2017	+	+	+	+	+	+	+	+	-
Hao Q, 2021	+	+	+	+	+	?	+	+	+
Hao Y, 2019	+	?	+	+	+	+	+	+	-
Hashizume M, 2007	+	?	+	+	+	+	+	+	+
Hashizume M, 2008	+	+	+	+	+	+	+	+	+
Huang N, 2021	+	+	+	+	+	+	+	+	+
Jagai.S J, 2015	?	?	+	+	+	?	+	+	+
Kemajou K, 2022	?	-	+	+	+	?	+	+	-
Lai H, 2020	+	+	+	+	+	+	+	+	+
Lee Suk H, 2017	+	?	+	+	+	+	+	+	-
Masinaei M, 2021	+	?	+	+	+	+	+	+	-
Ma Y, 2021	+	?	+	+	+	+	+	+	-
Mertens A, 2019	+	+	+	+	+	+	+	+	-
Morral-Puigmal C, 2018	+	?	+	+	+	+	+	+	-
Musengimana G, 2016	+	+	+	+	?	+	+	+	-
Phung D, 2015	+	?	+	+	+	+	+	+	+
Rahaman MD, 2023	?	?	+	+	+	?	+	+	-
Wang p, 2018	+	?	+	+	+	-	+	+	+
Wang P, 2018	?	?	+	+	+	?	+	+	-
Wu . J, 2014	?	?	+	+	+	+	+	+	-
Xu Z, 2013	+	?	+	+	+	+	+	+	-
Xu Z, 2014	?	?	+	+	+	+	+	+	-

Figure S1: Risk of bias summary: review authors' judgments about each risk of bias item (using a green symbol for low risk of bias, yellow for unclear, and red for high risk of bias) for each included study [23–58].

Supplementary Figures

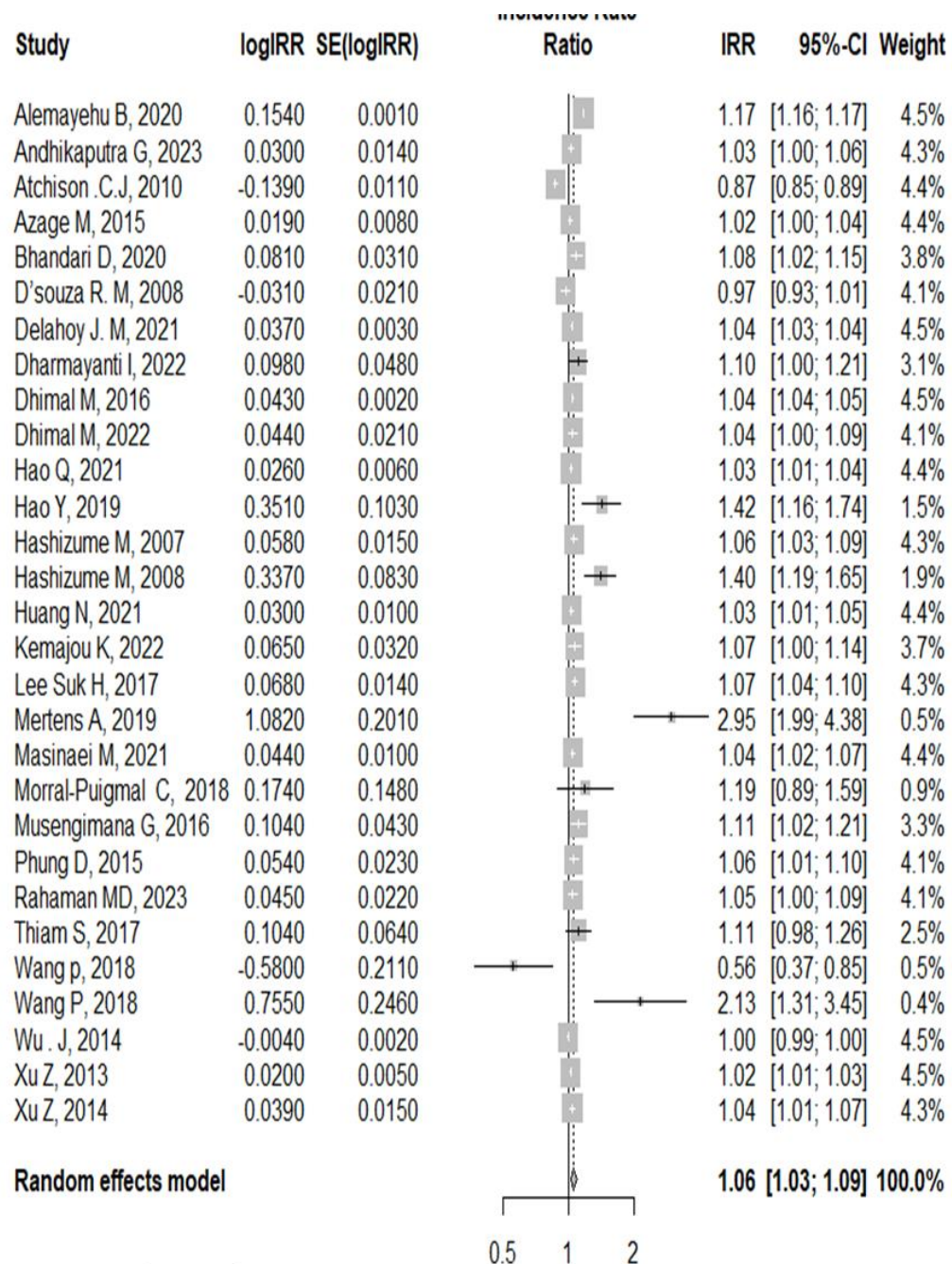


Figure S2: Forest plot of the systematic review of the association between temperature and childhood diarrhea [23–27, 31–35, 37–41, 43, 45, 47, 49, 50–58].

Supplementary Figures

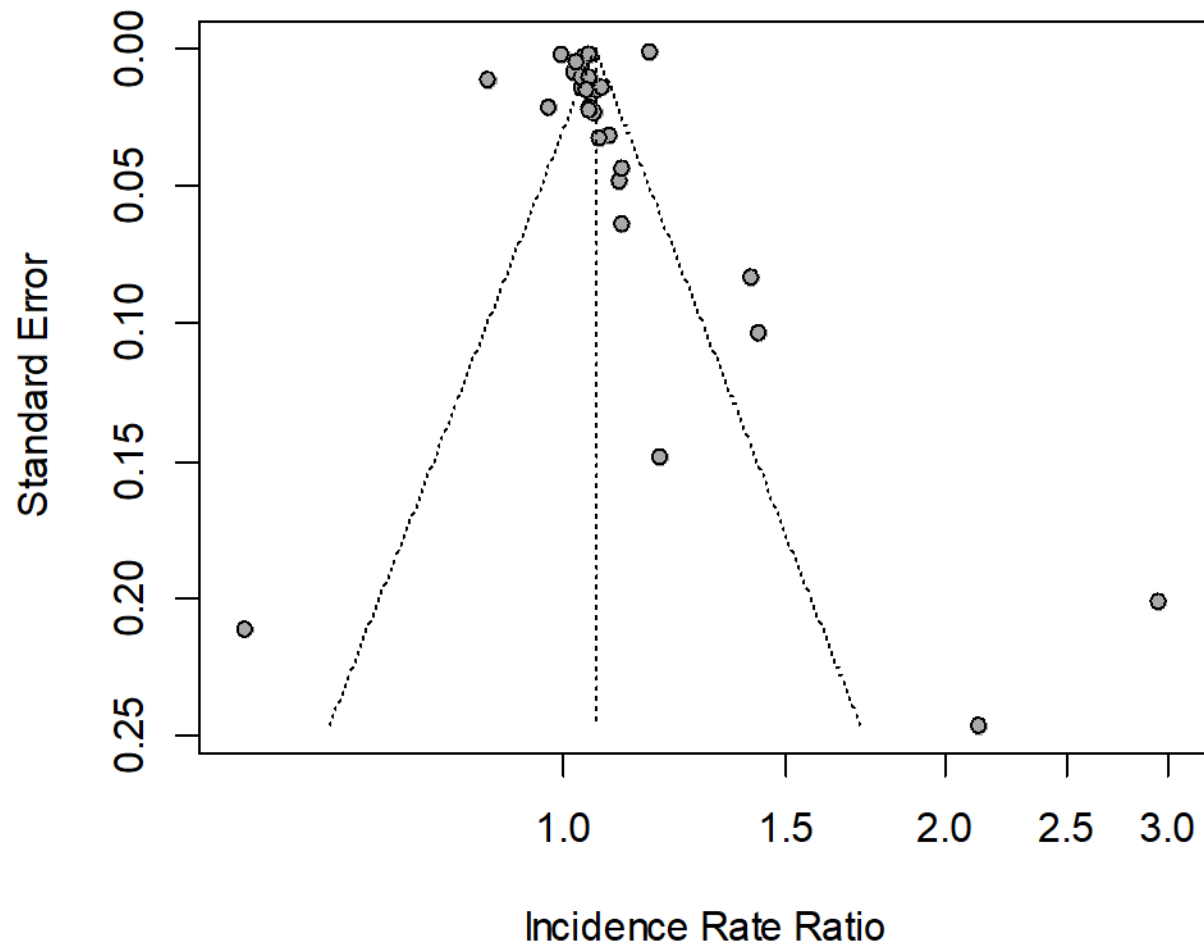
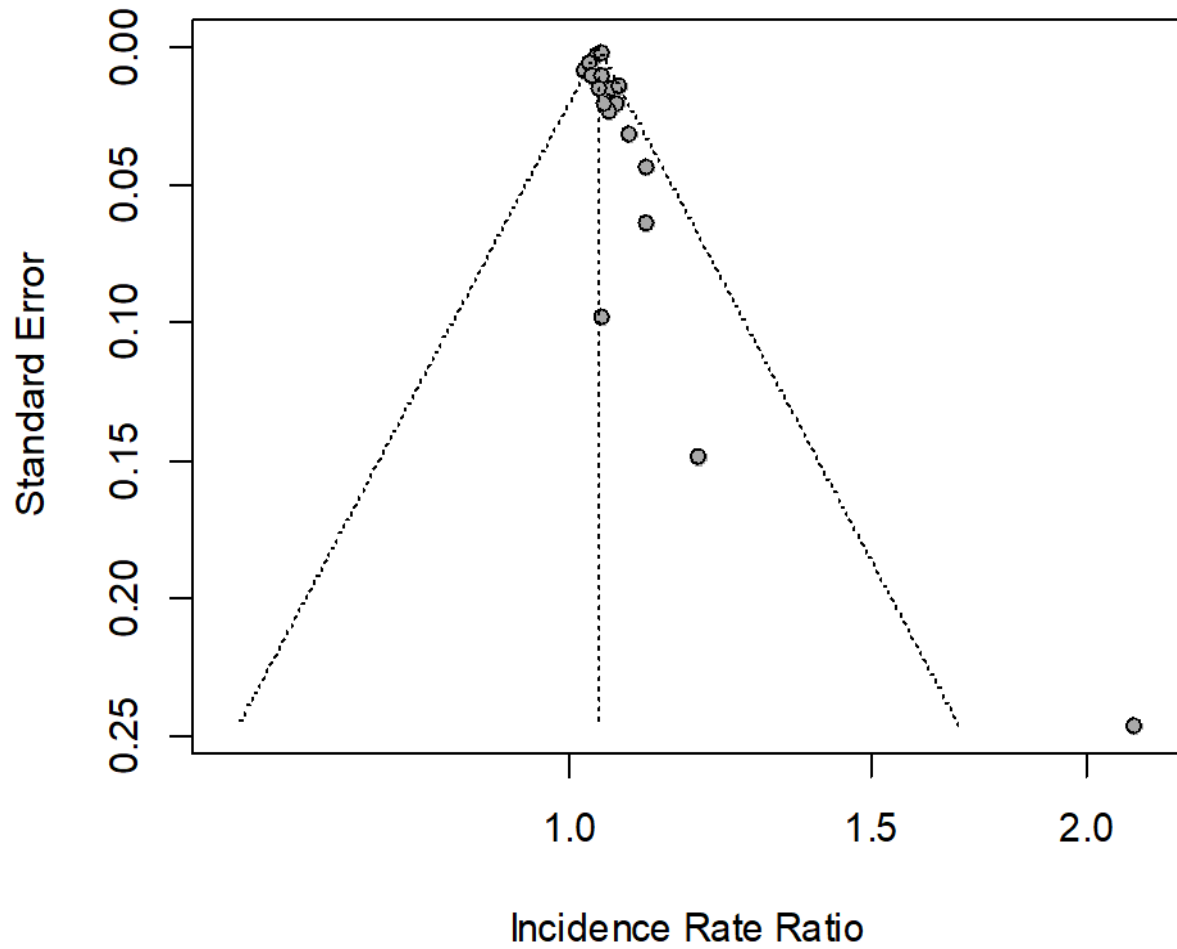


Figure S3: Funnel plot of the systematic review of the association between temperature and childhood diarrhea [23–27, 31–35, 37–41, 43, 45, 47, 49, 50–58].

Supplementary Figures



Supplementary Figures

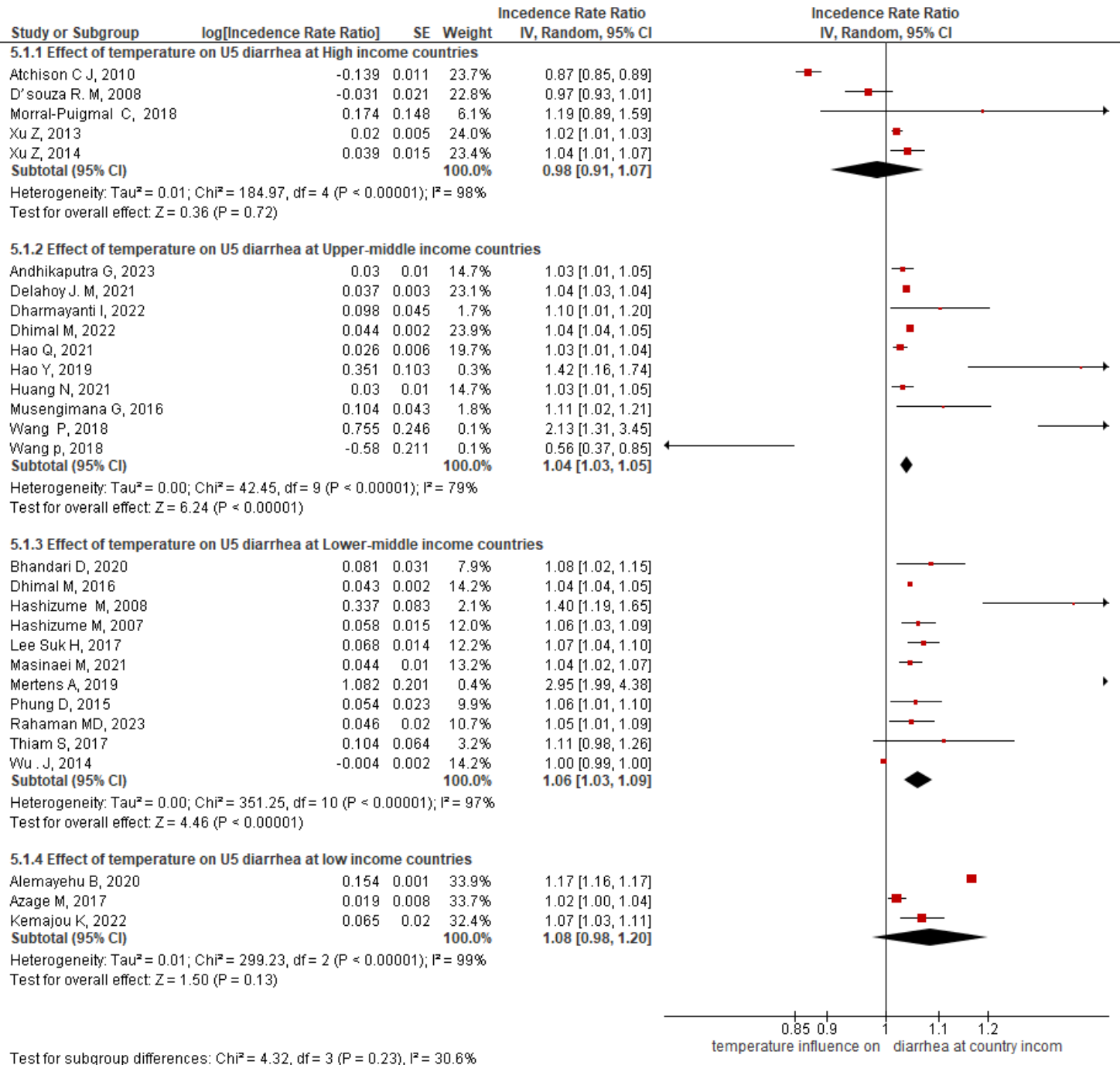


Figure S5: A forest plot of the systematic review of the association between temperature and childhood diarrhea at country income level [23–27, 31–34, 36–41, 43, 45, 47, 49, 50–58].

Supplementary Figures

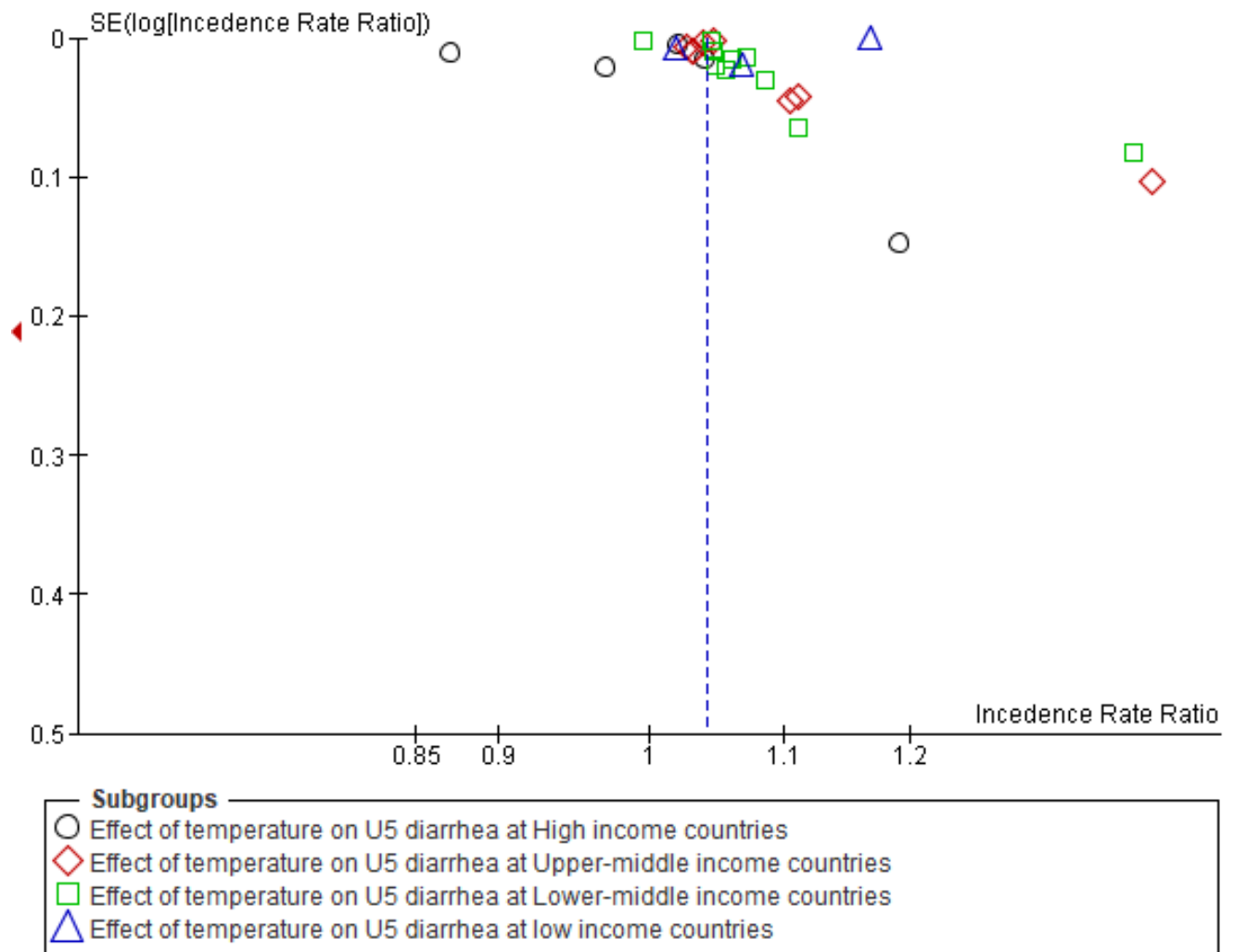


Figure S6: Funnel plot of the systematic review of the association between temperature and childhood diarrhea at country income level [23–27, 31–34, 36–41, 43, 45, 47, 49, 50–58].

Supplementary Figures

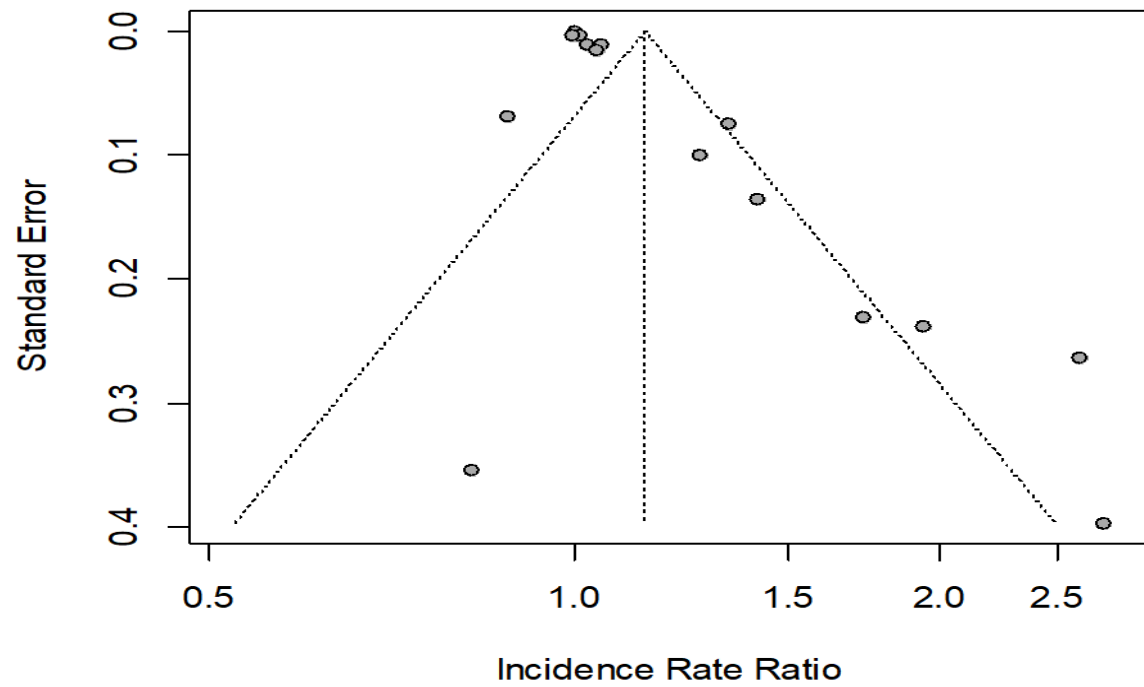


Figure S7: Funnel plot of the systematic review of the association between rainfall and childhood diarrhea [23, 26–29, 34, 36, 39, 44–46, 49, 54–55, 58].

.

Supplementary Figures

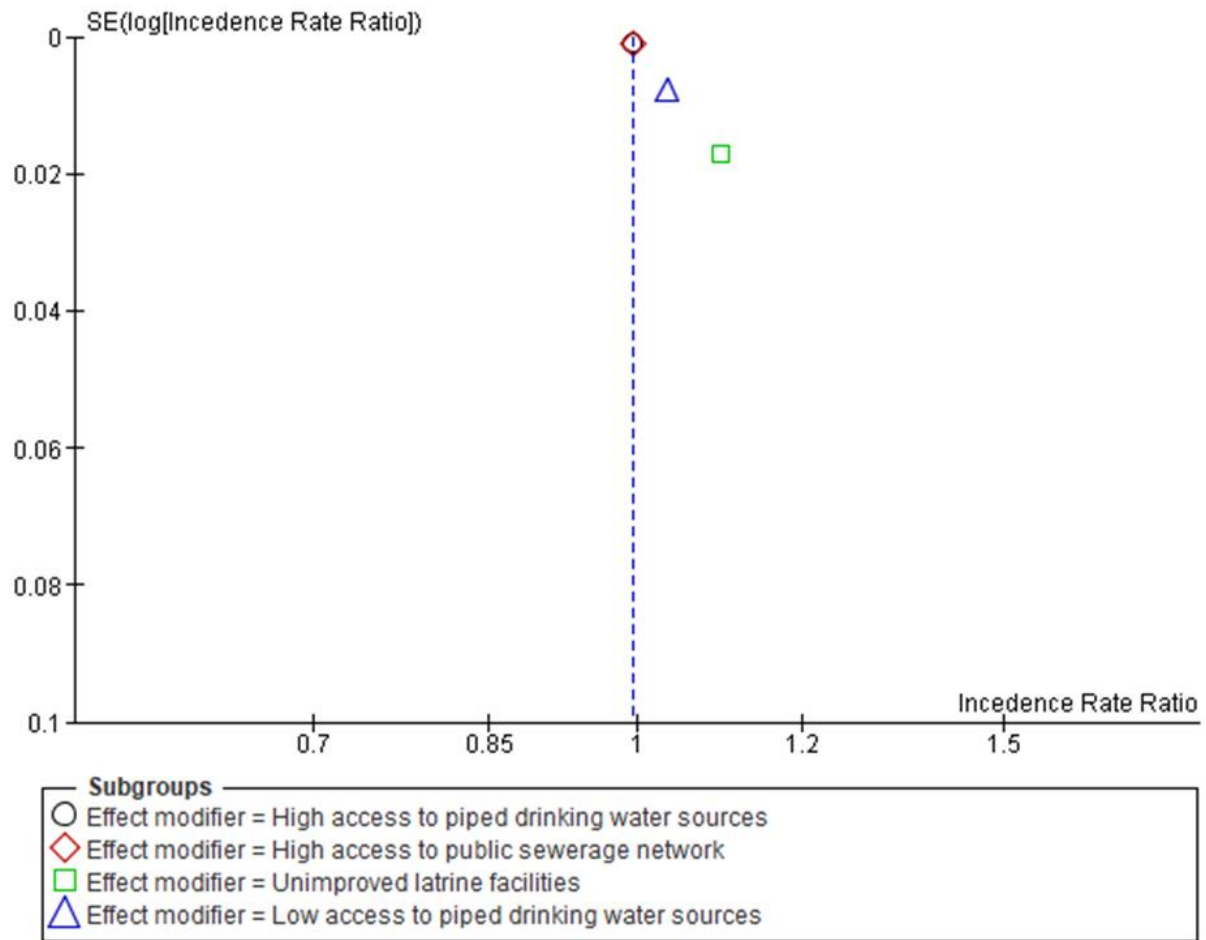


Figure S8: Funnel plot of meta-analysis on the modified association of temperature with childhood diarrhea due to water and sanitation conditions [47, 39, 32].

Supplementary Figures

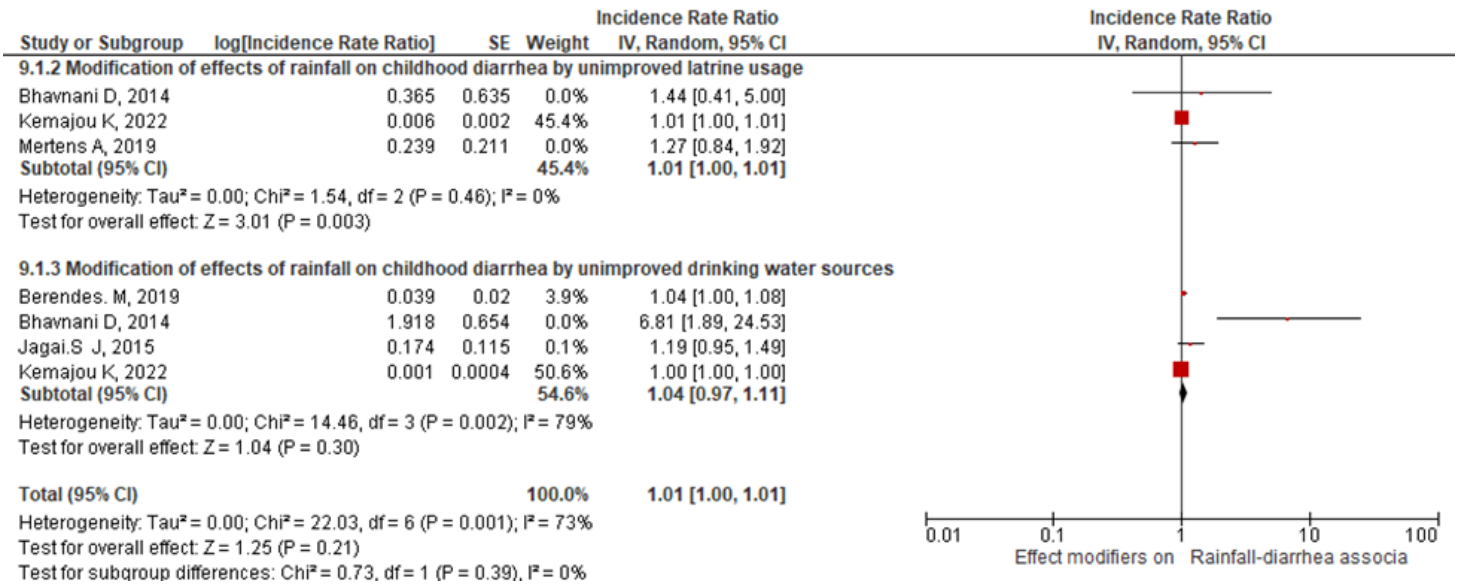


Figure S9: Forest plot of meta-analysis on the modified association of rainfall with childhood diarrhea due to water and sanitation conditions (without removing any study) [28, 30, 42–43, 49].

Supplementary Figures

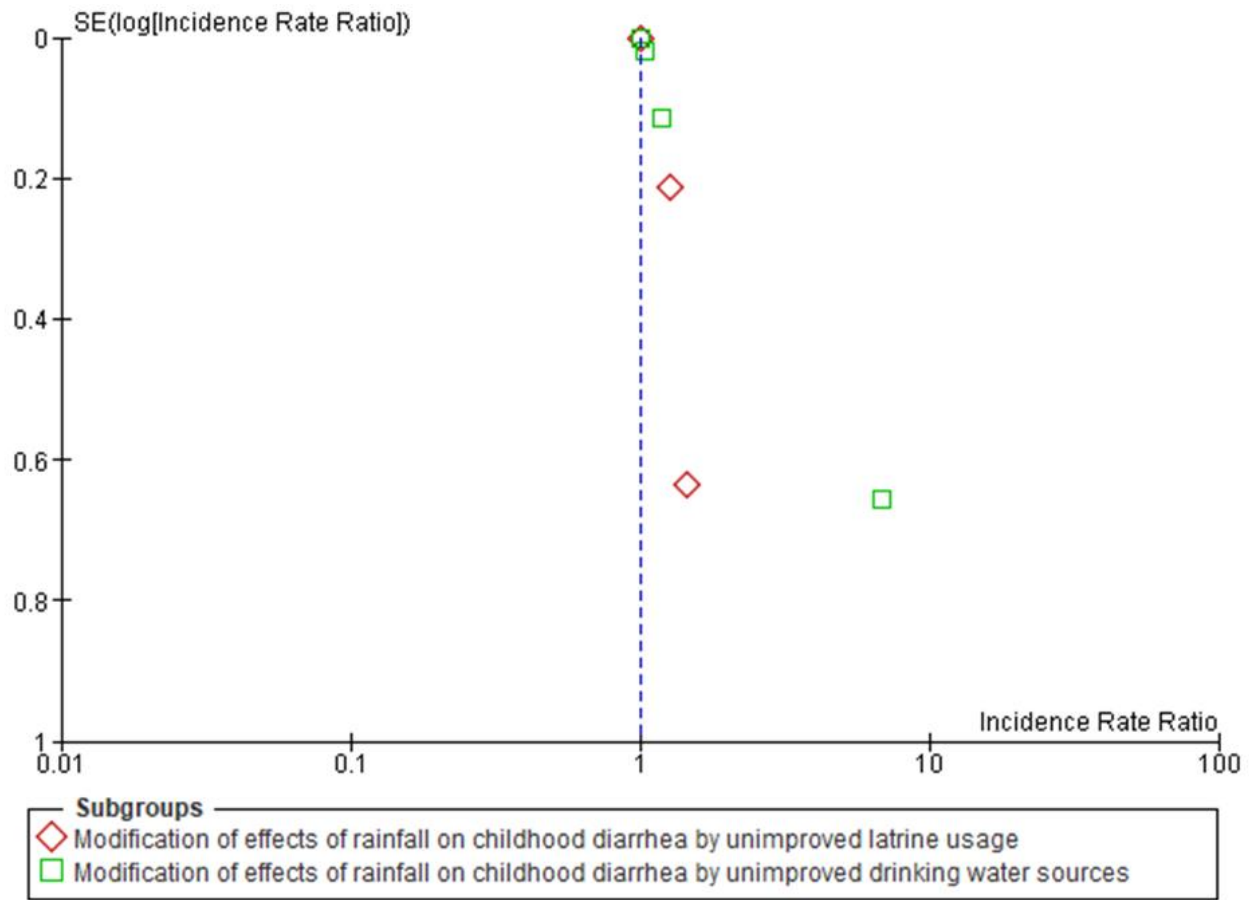


Figure S10: Funnel plot of meta-analysis on the modified association of rainfall with childhood diarrhea due to water and sanitation conditions (without removing any study) [30, 28, 42–43, 49].

Supplementary Figures

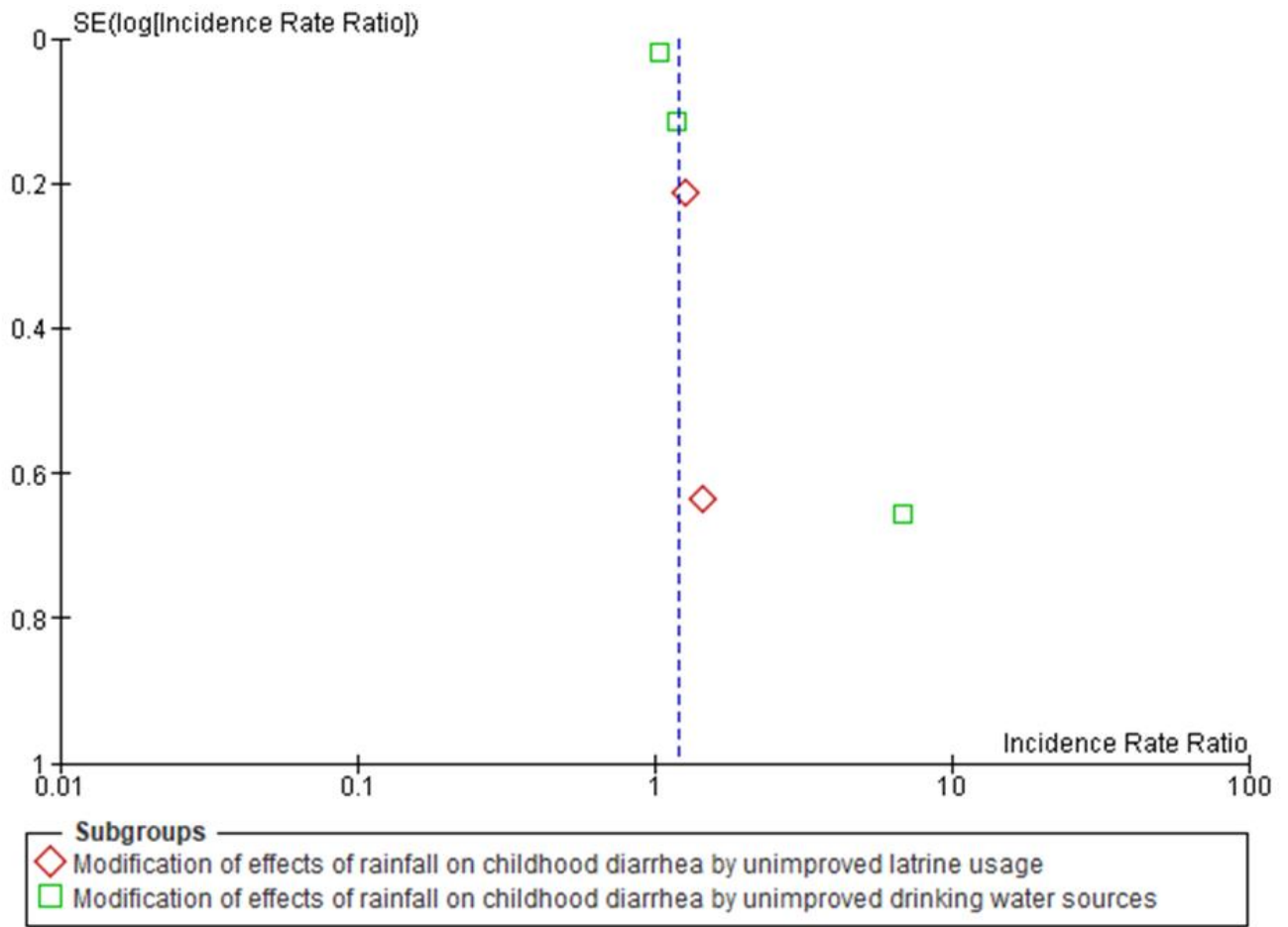


Figure S11: Funnel plot of meta-analysis on the modified association of rainfall with childhood diarrhea due to water and sanitation conditions [28, 49, 30, 42].