

Stereotactic Radiotherapy after Incomplete Transarterial (Chemo-) Embolization (TAE\TACE) Versus Exclusive TAE or TACE for Treatment of Inoperable HCC: A Phase III Trial (NCT02323360)

Tiziana Comito ¹, Mauro Loi ², Ciro Franzese ^{1,3}, Elena Clerici ¹, Davide Franceschini ¹, Marco Badalamenti ¹, Maria Ausilia Teriaca ¹, Lorenza Rimassa ^{3,4}, Vittorio Pedicini ⁵, Dario Poretti ⁵, Luigi Alessandro Solbiati ⁵, Guido Torzilli ^{3,6}, Roberto Ceriani ⁷, Ana Lleo ^{3,7}, Alessio Aghemo ^{3,7}, Armando Santoro ^{3,4} and Marta Scorsetti ^{1,3}

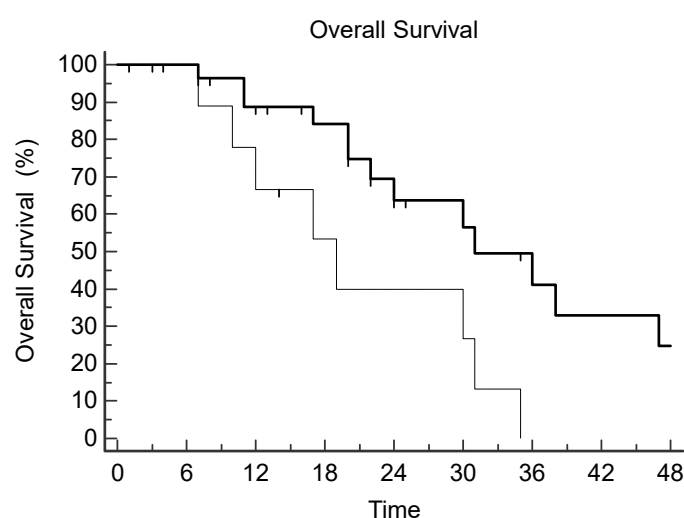


Figure S1. Kaplan Meier plot for Overall Survival according to use of Stereotactic Body Radiotherapy (SBRT). Solid Line: SBRT at any time point. Dashed Line: No SBRT.

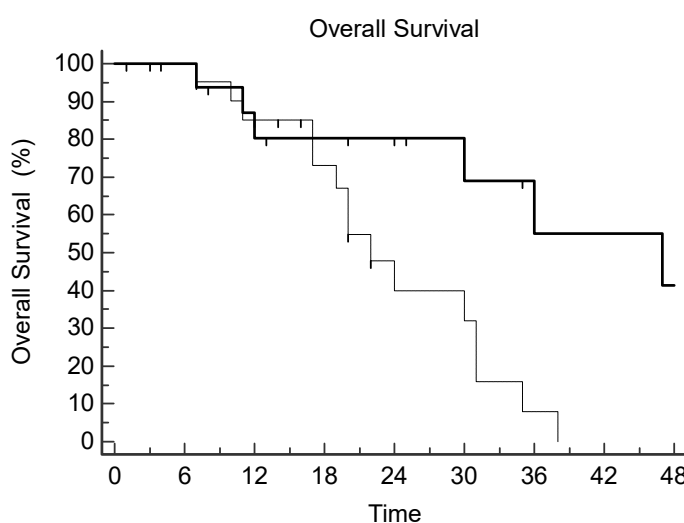


Figure S2. Kaplan Meier plot for Overall Survival according to prior local therapy. Solid Line: use of prior local therapy. Dashed Line: No prior local therapy.