

Supplementary Materials: On the response of nascent soot nanostructure and oxidative reactivity to photoflash exposure

Wei Wang, Dong Liu, Yaoyao Ying, Guannan Liu and Ye Wu

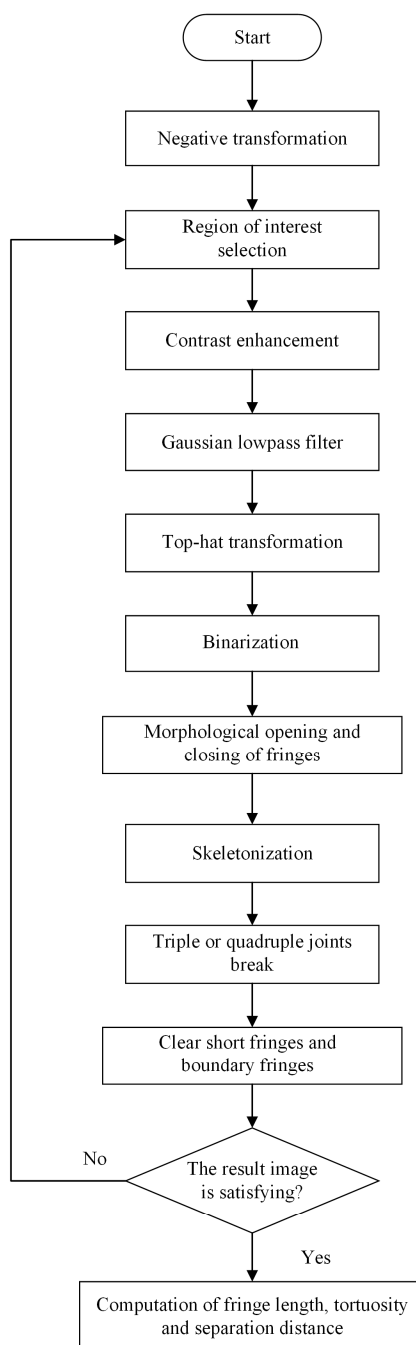


Figure S1. Flow chart of HRTEM image processing.

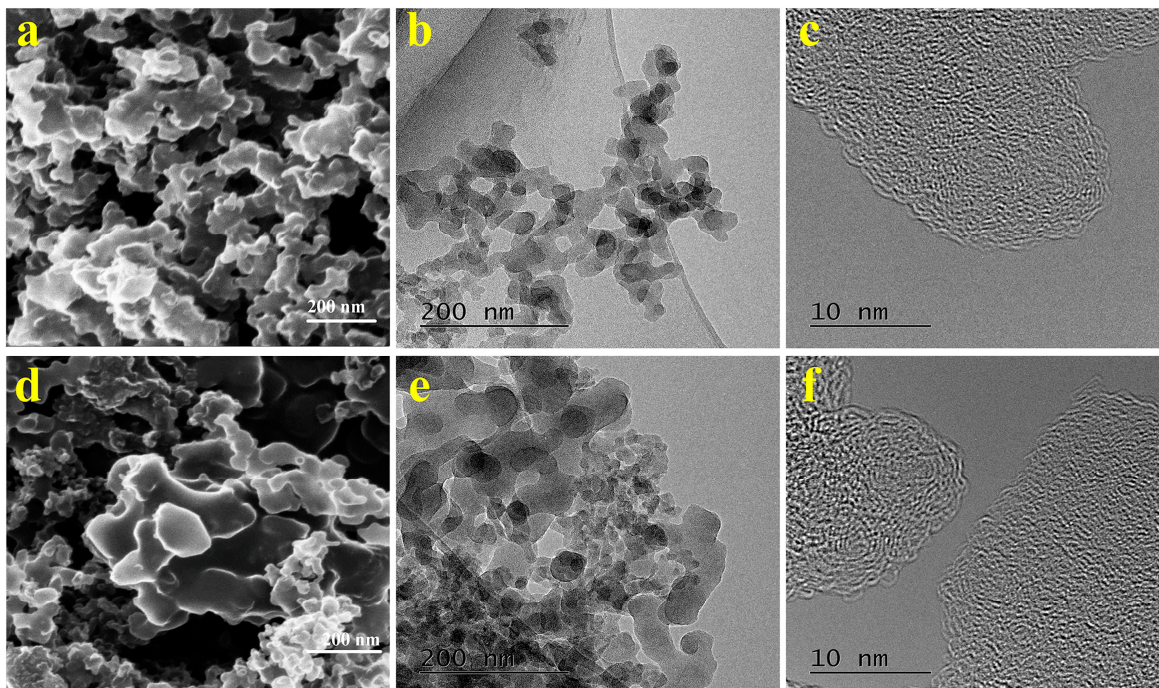


Figure S2. HIM images, typical TEM images and HRTEM images of F_{air1} and F_{ar1} . (a): HIM image of F_{air1} ; (b): typical TEM image of F_{air1} ; (c): HRTEM image of F_{air1} ; (d): HIM image of F_{ar1} ; (e): typical TEM image of F_{ar1} ; (f): HRTEM image of F_{ar1} .

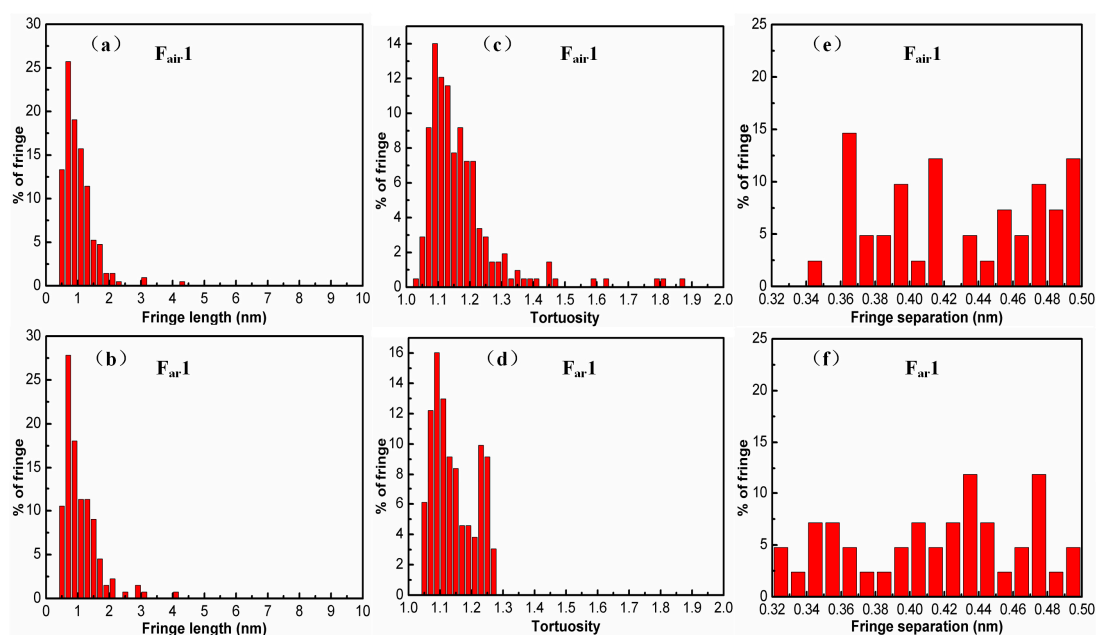


Figure S3. Histograms of fringe length, tortuosity and separation for F_{air1} and F_{ar1} : (a) Histograms of fringe length for F_{air1} ; (b) Histograms of tortuosity for F_{air1} ; (c) Histograms of separation for F_{air1} ; (d) Histograms of fringe length for F_{ar1} ; (e) Histograms of tortuosity for F_{ar1} ; (f) Histograms of separation for F_{ar1} .

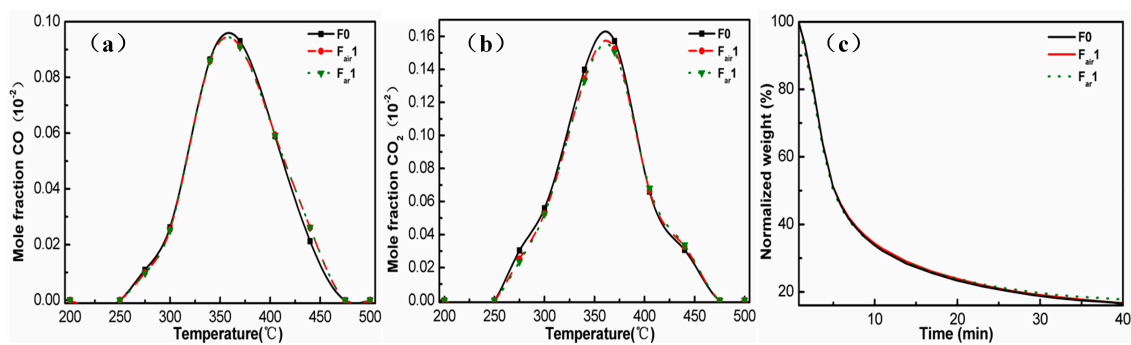


Figure S4. Oxidative behaviors for the three samples. (a): CO mole fraction of three samples in TPO experiments; (b): CO₂ mole fraction of three samples in TPO experiments; (c): TGA results of isothermal oxidation for three samples at 500 °C.



© 2017 by the authors. Submitted for possible open access publication under the terms and conditions of the Creative Commons Attribution (CC-BY) license (<http://creativecommons.org/licenses/by/4.0/>).