

Article

Ice Storage Air-Conditioning System Simulation with Dynamic Electricity Pricing: A Demand Response Study

Chi-Chun Lo ^{1,2,†}, Shang-Ho Tsai ^{1,†} and Bor-Shyh Lin ^{3,*}

¹ Institute of Electrical and Control Engineering, National Chiao Tung University, Hsinchu 30010, Taiwan; chichun@cgmh.org.tw (C.-C.L.); f0910051931@gmail.com (S.-H.T.)

² Department of Engineering and Maintenance, Chang Gung Memorial Hospital, Kaosiung 83301, Taiwan

³ Institute of Imaging and Biomedical Photonics, National Chiao Tung University, Tainan 71150, Taiwan

* Correspondence: gpapersubmit@gmail.com; Tel.: +886-6-303-2121 (ext. 57835)

† These authors contributed equally to this work.

Academic Editor: Susan Krumdieck

Received: 13 November 2015; Accepted: 28 January 2016; Published: 18 February 2016

Abstract: This paper presents an optimal dispatch model of an ice storage air-conditioning system for participants to quickly and accurately perform energy saving and demand response, and to avoid the over contact with electricity price peak. The schedule planning for an ice storage air-conditioning system of demand response is mainly to transfer energy consumption from the peak load to the partial-peak or off-peak load. Least Squares Regression (LSR) is used to obtain the polynomial function for the cooling capacity and the cost of power consumption with a real ice storage air-conditioning system. Based on the dynamic electricity pricing, the requirements of cooling loads, and all technical constraints, the dispatch model of the ice-storage air-conditioning system is formulated to minimize the operation cost. The Improved Ripple Bee Swarm Optimization (IRBSO) algorithm is proposed to solve the dispatch model of the ice storage air-conditioning system in a daily schedule on summer. Simulation results indicate that reasonable solutions provide a practical and flexible framework allowing the demand response of ice storage air-conditioning systems to demonstrate the optimization of its energy savings and operational efficiency and offering greater energy efficiency.

Keywords: ice storage system; air-conditioning system; dynamic electricity price; demand response; bee swarm optimization

1. Introduction

In recent years, due to rapid industrial development, the electricity demand growth has been substantial. In the summer, the peak load continues to rise year by year, but international oil costs and production lack stability. Therefore, there is an urgent need to seek and develop alternative sources of energy, as well as to carry out comprehensive reviews of the efficiency of using these energy sources. Thus, improving the efficiency of the chiller units to reduce electricity costs is very important. Currently, public buildings, such as large hospitals, office buildings and shopping malls, use central air-conditioning systems. In the current design of large-scale central air-conditioning systems, the main structure includes fans, ice water pumps, chiller units, cooling water pumps and cooling fans. By using the hot and cold exchange system, the indoor temperature heat load is transferred to the outdoors and the cooling load is about 40% of the total power load. The system peak loads may not be met by the air-conditioning system, so the ice storage technology has begun to be used for reducing

energy consumption. An ice storage system can reduce the off-peak demand load so the power charges are at the off-peak rate. The central ice storage air-conditioning system [1,2], which integrates chillers and an ice storage tank, has been effectively applied to the management of demand response.

The ice storage system runs the refrigerating compressor with off-peak loads during the night. The water is frozen to store plenty of latent heat by phase change, and then it is discharged to reduce the load profile of the air conditioning on peak load or partial-peak load during the day [3].

The economical and operational benefits offered by the chiller dispatch under time-of-use (TOU) [4] in Taiwan. This not only reduces the on-peak load for demand response, but also lowers the electricity price as the preferential rates are shifted from the peak load profile to off-peak periods. The ice storage tank shifts the peak load to off-peak hours in order to reduce the problem of overloads during peak hours, thereby improving the efficiency of off-peak electricity use and balancing electricity consumption. Therefore, the demand response strategies in an ice storage air-conditioning system are very important for saving energy [5]. The ice storage air-conditioning system is a combination of different chiller units and an ice storage tank, each with their own characteristic curves and different operating limitations. In related studies, the cubic equation was used to construct the characteristic curve to achieve higher accuracy; the accuracy of the efficiency curve of each chiller unit and the ice storage tank was improved, but the difficulty of the problem increased.

The problem is scheduling of the ice storage air-conditioning system for the industry, service industry, and large commercial office centers. Sun and Reddy [6] used a Taylor-Series expansion to solve the economic dispatch of chiller plants problem in order to find the optimal cooling load share for chiller units with different efficiencies. In reference [7] a particle swarm algorithm was used to facilitate optimization of ice-storage air-conditioning systems and to develop optimal operating strategies. In [3] the use of ice thermal energy storage to reduce and shift the electricity consumption of air-conditioning systems from on-peak hours to off-peak hours was proposed. In [8] ice storage systems were used to shift the peak cooling demand to off-peak periods in office buildings and several other studies have discussed the optimal design and control of cooling systems with ice storage [9–11].

A high-dimensional ice storage air-conditioning system presents a complex problem. In recent years, numerous experts and scholars have adopted the labor division and cooperation procedures of biological communities to develop many heuristic algorithms. Several studies have been carried out on the effectiveness of energy storage systems and the related literature includes the combination of sequential quadratic programming (SQP) [12,13], evolutionary programming (EP) [14], or the particle swarm algorithm (PSO) [15,16]. Also, optimization methods for initial solutions have often been adopted [17,18]. In particular, the particle swarm algorithm containing time-varying acceleration coefficients [19,20] was proposed for application in a variety of optimization problems. By using time-varying weight factors, the search space and accuracy of the algorithm have been improved. These hybrid and weight factor adjustment optimization methods are worth further study and discussion.

The enhanced bee swarm optimization algorithm (EBSO) [21] is a kind of optimization technique based on collective intelligence that originates from the foraging behavior of bees. Bee swarms communicate and collaborate with each other through pheromones to exhibit intelligent behavior. This behavior has been used in the development of several related algorithms [22] and applied to actual optimization problems. In this paper, the improved ripple bee swarm optimization (IRBSO) uses nonlinear ripple weight factors to improve the behavior pattern of each bee swarm and increase its search efficiency and accuracy in high dimensions. The cognitive and social parameter factors use nonlinear ripple weight to improve the search ability. In this paper, the IRBSO is proposed to solve the system's dynamic electricity price for demand response requires. In our results show that the proposed method is feasible, robust, and more effective than many previously developed algorithms.

2. System Structure

The main structure of a large-scale central ice storage air-conditioning system includes fans, ice water pumps, chillers, an ice storage tank, ice storage pump, cooling water pumps and cooling

fans, as shown in Figure 1. To meet the cooling load and provide large buildings with a stable supply, multiple chiller units are operated in parallel and connected to a common supply system. By using the hot and cold exchange system, the indoor temperature heat load is transferred to the outdoors. This architecture can effectively make the chiller and ice storage operations more flexible and reliable, as well as provide a standby capacity, while requiring lower unit maintenance costs. The ice storage air-conditioning system of demand response works by operating the ice storage tank to take advantage of the off-peak electricity price.

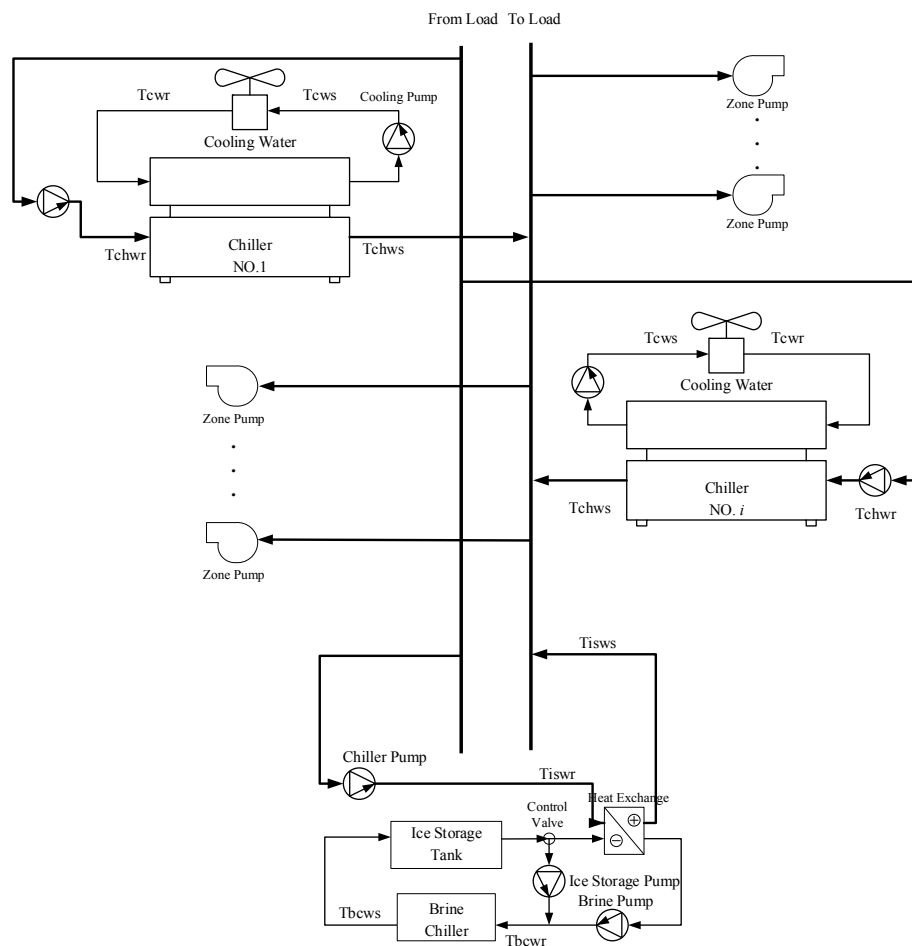


Figure 1. Ice storage air-conditioning system.

The cold energy is stored in the form of sensible heat, and the ice is melted into water to release cold energy in order to provide the required cooling load. In this way, air-conditioning demands are met, electricity use during peak hours in the daytime is reduced, the stored ice is released to transfer the peak electricity demands and power costs are reduced. This paper is to derive the best single-day schedule planning for ice storage air-conditioning systems. The mathematical formulas of the chillers and ice storage tank are introduced as follows:

2.1. Chiller Capacity Cooling Load

The cooling load capacity is calculated based on the return water temperature and supply water temperature of the chillers, as well as the flow rate of the chilled water. The calculations of the cooling load capacity for the chillers are expressed in Equations (1) and (2):

$$Q_{chiller,i} = (LPM_{chiller,i} \times (\Delta T_{chw,i}) \times \rho_w \times C_{pw}) \times 60_{min} \quad (1)$$

$$\Delta T_{chw,i} = T_{chwr,t,i} - T_{chwst,i} \quad (2)$$

$\Delta T_{chw,i}$: temperature difference of chilled water ($^{\circ}\text{C}$)

$T_{chwr,t,i}$: the return temperature of chilled water ($^{\circ}\text{C}$)

$T_{chwst,i}$: the supply temperature of chilled water ($^{\circ}\text{C}$)

$LPM_{chiller,i}$: the flow rate of chilled water (L/min)

ρ_w : the density of chilled water (1 kg/m^3)

C_{pw} : the specific heat of chilled water ($4.186 \text{ kJ/kg}\cdot\text{K}$)

$Q_{chiller,i}$: the cooling load of the i th chiller (kJ/h).

The power consumption of chillers is a convex function of the cooling load capacity and the each chiller represents the operational control in Equations (3) and (4):

$$Q_{chiller,i,\min} \leq Q_{chiller,i} \leq Q_{chiller,i,\max} \quad (3)$$

$$P_{chiller,i}(Q_{chiller,i}) = a_i + b_i Q_{chiller,i} + c_i Q_{chiller,i}^2 + d_i Q_{chiller,i}^3 \quad (4)$$

where $P_{chiller,i}$ is the power consumption (kW) of chiller i ; and a_i , b_i , c_i and d_i are the regression coefficients of the operation curve of the i th chiller.

2.2. Ice Storage Cooling System

The ice storage tank is stored in the form of sensible heat, and the ice is melted into water to release cold energy in order to provide the required cooling load. The ice storage operation during off-peaks of electricity mainly involves freezing water into ice in order to store the cooling capability; the cooling load capability of the melting ice is calculated using the water temperature differences and the water flow valve. The cooling load capacity of an ice storage tank is calculated based on the return water temperature, supply water temperature and the flow rate of the chilled water. The calculation of the cooling load capacity is represented in Equations (5) and (6):

$$Q_{ice} = \Delta T_{isw} \times LPM \times C_{pw} \times 60_{\min} \quad (5)$$

$$\Delta T_{isw} = T_{iswr} - T_{isws} \quad (6)$$

ΔT_{isw} : the temperature difference of ice storage water ($^{\circ}\text{C}$)

T_{iswr} : the return temperature of ice storage water ($^{\circ}\text{C}$)

T_{isws} : the supply temperature of ice storage water ($^{\circ}\text{C}$)

LPM : the flow rate of ice storage water (L/min)

Q_{ice} : cooling load capacity of ice storage tank (kJ/h).

The operation modes of the ice storage tank can be divided into a “charge process” and a “discharge process”. The ice storage operation in the charging process mainly involves freezing water into ice in order to store the cooling capability, while the ice melting in the discharging process supplies the cooling capability. The ice storage power consumption in the charging process is briefly formulated in Equation (7) and the discharging process in Equation (8):

$$P_{ice,cp} = a_{cp} + b_{cp} Q_{ice,cp} + c_{cp} Q_{ice,cp}^2 + d_{cp} Q_{ice,cp}^3 \quad (7)$$

$$P_{ice,dp} = a_{dp} + b_{dp} Q_{ice,dp} + c_{dp} Q_{ice,dp}^2 + d_{dp} Q_{ice,dp}^3 \quad (8)$$

where a_{cp} , b_{cp} , c_{cp} and d_{cp} are the regression coefficients of $Q_{ice,cp}$ and $P_{ice,cp}$ is the ice storage charge process power (kW). The cooling load capacity of the ice melting is calculated based on the amount of melting ice, where a_{dp} , b_{dp} , c_{dp} and d_{dp} are the regression coefficients of $Q_{ice,dp}$ and $P_{ice,dp}$ is the ice storage pump power (kW).

2.3. Ice Storage Air-Conditioning System

The ice storage air-conditioning system's dynamic electricity price for demand response requires minimizing the total operating cost. This paper also considers the connection with a utility company regarding the TOU rate [4]. The total operating cost includes the charging and discharging process of the power from an ice storage tank, which is formulated as Equation (9):

$$\begin{aligned} \text{Min Cost} = & \sum_{t=1}^h \left(\left(\sum_{i=1}^j P_i^t(Q_{chiller,i}^t)U_i^t + SU_i^t + SD_i^t \right) \times price^t \right) \\ & + \sum_{t=1}^{k_1} P_{ice,cp}^t(Q_{ice,cp}^t) \times price_{ice} + \sum_{t=k_1+1}^{k_2} P_{ice,dp}^t(Q_{ice,dp}^t) \times price^t \end{aligned} \quad (9)$$

where h is the scheduling hour; j is the total number of chiller units; U_i^t is the i th chiller's operation status (on/off) at hour t ; SU and SD are the start-on and shut-off power of the chiller units, respectively; $price^t$ and $price_{ice}$ are the dynamic electricity price at hour t and the favorable price for ice storage. The ice storage charge process time is from $t = 1$ to $k_1 = 10$ (22:00 p.m. to 07:00 a.m.) have favorable price and discharge processing times is from $t = 11$ to $k_2 = 24$ (8:00 a.m. to 21:00 p.m.) used summer power prices. The cooling load of the system can be used according to Equation (10):

$$CL^t = \sum_{t=1}^h \sum_{i=1}^j Q_{chiller,i}^t U_i^t + \sum_{t=k_1+1}^{k_2} Q_{ice,dp}^t \times (1 - l_{loss}) \quad (10)$$

$$hour_i^t > 0 \text{ if } U_i^t = 1 \text{ than } [hour_i^{t-1} - T_i^{on}] \times [U_i^{t-1} - U_i^t] \geq 0 \quad (11)$$

$$hour_i^t < 0 \text{ if } U_i^t = 0 \text{ than } [-hour_i^{t-1} - T_i^{off}] \times [U_i^t - U_i^{t-1}] \geq 0 \quad (12)$$

$$\sum_{t=1}^{k_1} Q_{ice,cp}^t - \sum_{t=k_1+1}^{k_2} Q_{ice,dp}^t \times (1 - l_{loss}) = 0 \quad (13)$$

where CL^t is the system total cooling load at hour t ; $hour_i^t$ is the time duration for which unit i has been on or off at time t , The chiller unit operation minimum on-time, $T_{i,on}$, and minimum off-time, $T_{i,off}$ constraints are shown in Equations (11) and (12). The l_{loss} is transmission loss for the ice storage system and l_{loss} is set to 0.05. The ice storage tank for the charge process and discharge process for a day can be used according to Equation (13).

3. Proposed Methodology

This study proposes an IRBSO in order to achieve the optimal demand response of an ice storage air-conditioning system. The objective is to minimize cost in a daily schedule while satisfying all constraints including cooling loading. The bee swarm algorithm significantly changes the operation mode of bee swarms, which can be divided into forager bees, onlooker bees and scout bees. To further strengthen the global search capability, each bee type uses a different approach. The input data include system total cooling load, dynamic electricity price, operation status of each chiller and cooling load, temperature of chilled water, ice storage charge and discharge processes and the temperature of the ice storage water. The IRBSO parameters include the forager bees, onlooker bees and scout bees, with the total population of bees as X , the number of as $iter$, the nonlinear ripple weight factor as H and the interference factor as pr .

Let $B_x^t = \{Q_{chiller,i}^t, U_i^t, Q_{ice,cp}^t, Q_{ice,dp}^t\}$ be an individual, $x = 1, 2, \dots, X$ and X is set to 100 in this paper. The population sizes in the IRBSO algorithm are forager bees 40%, onlooker bees 40% and scout bees 20%. All individuals are set between the lower and upper limits with a uniform distribution, as shown in Equation (14):

$$B_x^t = B_{x,min}^t + rand \times (B_{x,max}^t - B_{x,min}^t) \quad (14)$$

where *rand* is a random variable between 0 and 1. The fitness score of each B_k^t is obtained by calculating the objective function.

3.1. Forager Bees

The messages of the releaser pheromones and primer pheromones spread in the message exchange area are retrieved by experienced forager bees. The forager bees remember the best location in their own searches, $Pbest_{x_1}^t$, and x_1 is the number of forager bees. This method can effectively strengthen the search range and accuracy, resulting in a higher probability of finding the global optimal solution. The forager bees follow the location of the current optimal solution to search $Gbest^t$, as shown in Equation (15):

$$B_{x_1,iter+1}^t = B_{x_1,iter}^t + \begin{pmatrix} w_b \times r_b \times (Pbest_{x_1}^t - B_{x_1,iter}^t) + \\ w_g \times r_g \times (Gbest^t - B_{x_1,iter}^t) \end{pmatrix} \quad (15)$$

where r_b and r_g are two random numbers between 0 and 1. Some bees flying over some parts of the search space may acquire profitable information from other bee swarms. The bees need to avoid premature convergence and to enlarge the search area to cover places that might have been neglected. The w_b and w_g determine the importance of the social and cognitive information for each iteration. In this study, $w_{b,max}$, $w_{b,min}$, $w_{g,max}$, $w_{g,min}$ and $iter_{max}$ are set to 1.5, 0.8, 0.8, 1.5 and 200, respectively.

In this study, we used the nonlinear sine function and temporal variation as gives in Equations (16) and (17). Based on the resonance of weight factors w_{brf} and w_{grf} , staggered search results can be achieved in which the nonlinear ripple weight factor is more effective at making the algorithm search better both locally and globally:

$$w_{brf} = \sin \left(\frac{iter - iter_{max} \times \left(\frac{w_{b,max} + w_{b,min}}{2} \right)}{iter_{max} \times \left(\frac{w_{b,max} + w_{b,min}}{2} \right) - iter} \times \frac{H}{\pi} \right) \quad (16)$$

$$w_{grf} = -w_{brf} \quad (17)$$

where H is set to 0.05, 0.1 and 1; the non-linear ripple weight factors can be derived from the w_{brf} and w_{grf} ripple resonance curves placed into w_b and w_g , as in Equations (18) and (19), Figures 2 and 3 show the behavior of w_b and w_g with different values of H :

$$w_b = w_{b,min} + \frac{w_{b,max} - w_{b,min}}{iter_{max}} \times iter + w_{brf} \quad (18)$$

$$w_g = w_{g,min} + \frac{w_{g,max} - w_{g,min}}{iter_{max}} \times iter + w_{grf} \quad (19)$$

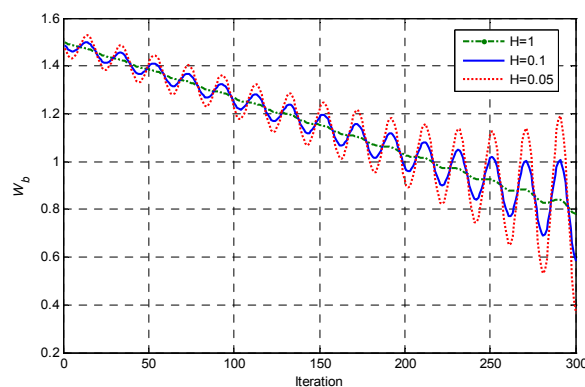


Figure 2. H of w_b vs. different iterations.

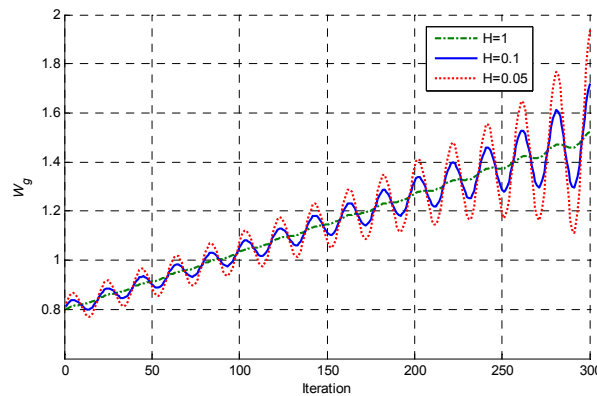


Figure 3. H of w_g vs. different iterations.

3.2. Onlooker Bees

The onlooker bees in the improved bee swarm algorithm follow the experienced forager bees to obtain nectar information. Equation (20) is used for judging whether or not to follow the forager bees for foraging. The onlooker bees use the probabilistic selection method, as shown in Equation (21), to follow the experienced forager bees to gather nectar. In the working mode of the onlooker bees, the interference factor is also included in order to enlarge the search area:

$$prob(e) = \frac{1/\phi(B_{x_1,iter}^t)}{\sum 1/(\phi(B_{x_1,iter}^t))} \quad (20)$$

$$B_{x_2,iter+1}^t = B_{x_2,iter}^t + w_g \times r \times (B_{prob(e)}^t - B_{x_2,iter}^t) \quad (21)$$

where $prob(e)$ is the fitness value of the source food; $B_{prob(e)}^t$ is the best source; x_2 is the number of onlooker bees; and r is a random number between 0 and 1.

3.3. Scout Bees

In the bee swarm algorithm, the model of the scout bees is no longer a baseless random search. In [20], the working model of the scout bees is modified to the average value of the global optimum solution and all swarm locations, as in Equations (22) and (23):

$$B_{x_3,iter+1}^t = B_{x_3,iter}^t + r \times (Gbest^t - l \cdot M_{iter}) \quad (22)$$

$$l = round(1 + rand(0,1)) \quad (23)$$

where x_3 is the number of scout bees; and M is the average of all variable solutions in the iteration.

3.4. Self-Adaptation Repulsion Factor of Bee Swarm

To further strengthen the global search capability, the experienced forager bees use different approaches. This procedure causes them to fly over some parts of the search space and may include profitable information from the bee swarm. The increasing diversity of the bee swarm is incorporated in order to avoid premature convergence. To enlarge a search area that might have been neglected, a relevant study suggests the concept of the interference factor, $sign$. When the randomly generated $rand(0,1)$ is larger than the predefined pr , a reverse search, as given in Equation (24), takes place and pr is initially set to 0.8:

$$sign = \begin{cases} 1, & \text{if } rand(0,1) \leq pr \\ -1, & \text{else} \end{cases} \quad (24)$$

We modified the interference factor, $sign$, to the self-adaptation repulsion factor, $sign$, with an initial setting of $pr = 0.7$ and the random variable $rand(0,1)$ for the total number of bee swarms. The $sign$ values used by the bee swarms were recorded, and the pr value based on self-adaptation repulsion was adjusted based on the fitness value for iteration, as in Figure 4.

```

if Min Cost comes from sign = 1
    pr = pr + 0.1
    if pr > pr_max, then pr = pr_max and ct = ct + 1
    otherwise ct = 0
    if ct = ct_max, then pr = 0.7 and ct = 0
otherwise Min Cost comes from sign = -1
    pr = pr - 0.1
    if pr < pr_min, then pr = pr_min and ct = ct + 1
    otherwise ct = 0
    if ct = ct_max, then pr = 0.7 and ct = 0
end

```

In this paper, $pr_{max} = 0.9$ and $pr_{min} = 0.1$ to prevent pr from becoming extreme, and $ct_{max} = 5$. The updating velocities used in this study improved the diversity of the solutions. This behavior is referred to as the self-adaptation repulsion factor.

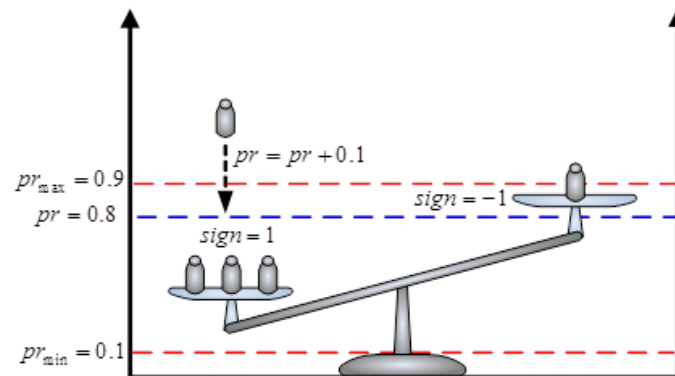


Figure 4. Probability variation of pr .

The effect of the repulsion factor for the bee swarm can be expressed as Equations (25) to (27):

$$B_{x_1,iter+1}^t = B_{x_1,iter}^t + sign \times \begin{pmatrix} w_b \times r_b \times (Pbest_{x_1}^t - B_{x_1,iter}^t) + \\ w_g \times r_g \times (Gbest^t - B_{x_1,iter}^t) \end{pmatrix} \quad (25)$$

$$B_{x_2,iter+1}^t = B_{x_2,iter}^t + sign \times w_g \times r \times (B_{prob(e)}^t - B_{x_2,iter}^t) \quad (26)$$

$$B_{x_3,iter+1}^t = B_{x_3,iter}^t + sign \times r \times (Gbest^t - l \cdot M_{iter}) \quad (27)$$

4. Simulation Results

In this study we investigated the actual practice in the operation planning of the chiller units and ice storage tank for a hospital. IRBSO, TVAC-PSO and PSO were used to calculate the optimal single-day cooling loads of the dynamic electricity price in summer, along with the derived switch status and which include six chillers and one ice storage tank. The TOU rates for the chillers and ice storage tank was calculated based on the summer date listed in Table 1.

Table 1. The TOU [4] rate for a summer day.

Hours	Load Classification	Ice Storage Tank		Chiller Prices (NT\$)
		Process	Prices (NT\$)	
22:00	Off-Peak	Charging	0.942	1.57
23:00	Off-Peak	Charging	0.942	1.57
24:00	Off-Peak	Charging	0.942	1.57
01:00	Off-Peak	Charging	0.942	1.57
02:00	Off-Peak	Charging	0.942	1.57
03:00	Off-Peak	Charging	0.942	1.57
04:00	Off-Peak	Charging	0.942	1.57
05:00	Off-Peak	Charging	0.942	1.57
06:00	Off-Peak	Charging	0.942	1.57
07:00	Off-Peak	Charging	0.942	1.57
08:00	Partial-Peak	Discharging	3.13	3.13
09:00	Partial-Peak	Discharging	3.13	3.13
10:00	Peak	Discharging	4.73	4.73
11:00	Peak	Discharging	4.73	4.73
12:00	Partial-Peak	Discharging	3.13	3.13
13:00	Peak	Discharging	4.73	4.73
14:00	Peak	Discharging	4.73	4.73
15:00	Peak	Discharging	4.73	4.73
16:00	Peak	Discharging	4.73	4.73
17:00	Partial-Peak	Discharging	3.13	3.13
18:00	Partial-Peak	Discharging	3.13	3.13
19:00	Partial-Peak	Discharging	3.13	3.13
20:00	Partial-Peak	Discharging	3.13	3.13
21:00	Partial-Peak	Discharging	3.13	3.13

All the simulations were carried out with MATLAB 7.6 on a Core i5, 3.0 GHz personal computer with 8 GB of RAM. The relevant information for each chiller and the ice storage included the hourly recorded operating coefficients from March to December in 2013 for the data modeling. The cooling capability for each refrigerating ton (RT) is 12,658.46 kJ/h and operating parameters of the 6 chiller units and the ice storage tank of 8000 RT. By using the measurement data, the least squares method (LSR) was used to get the input-output (I/O) operation curves of the chillers and the ice storage tank as shown in Tables 2 and 3. Customers operating ice storage central air conditioning system are eligible for a 40% discount on the energy charge for the system's off-peak kWh consumption in Taiwan.

Table 2. Operational constraints for chillers 1 to 6.

Chiller	$P_{chiller,1}$	$P_{chiller,2}$	$P_{chiller,3}$	$P_{chiller,4}$	$P_{chiller,5}$	$P_{chiller,6}$
Min on-time	1	1	2	2	3	3
Min off-time	1	1	2	2	3	3
SU(kW)	30	30	40	40	50	50
SD(kW)	30	30	40	40	50	50

Table 3. Chillers 1 to 6 and ice storage tank.

Chiller Unit (kW)	<i>a</i>	<i>b</i>	<i>c</i>	<i>d</i>	$Q_{\text{chiller,min}}$ (RT)	$Q_{\text{chiller,max}}$ (RT)
$P_{\text{chiller},1}$	65.777	0.689	1.694×10^7	5.429×10^8	165	550
$P_{\text{chiller},2}$	128.797	0.158	1.408×10^3	-1.142×10^6	165	550
$P_{\text{chiller},3}$	81.407	0.423	6.317×10^4	-3.852×10^7	300	1000
$P_{\text{chiller},4}$	107.725	0.433	2.510×10^4	-7.207×10^8	300	1000
$P_{\text{chiller},5}$	623.209	-1.602	2.821×10^3	-1.156×10^6	300	1000
$P_{\text{chiller},6}$	101.536	0.299	8.498×10^4	-4.960×10^7	300	1000
Ice Storage Tank Charge Process (kW)	a_{cp} 42.999	b_{cp} 1.105	c_{cp} -1.772×10^3	d_{cp} 1.252×10^6	$Q_{\text{ice,cp,min}}$ 100	$Q_{\text{ice,cp,max}}$ 700
Ice Storage Tank Discharge Process (kW)	a_{dp} -2.256	b_{dp} 0.071	c_{dp} 5.485×10^5	d_{dp} -4.872×10^8	$Q_{\text{ice,dp,min}}$ 105.26	$Q_{\text{ice,dp,max}}$ 1263.16

4.1. Dynamic Electricity Price and Ice Storage Tank Strategy for Case Study

The ice storage tank model included the demand response, the average discharge and the situation without an ice storage tank to determine the dynamic electricity price in the case tests. Table 4 shows the respective simulation results for the objective programming of the case for the total scheduling of a day. That minimized the total cost and dispatch of an ice storage tank in summer. Different models had different results, and all constraints were met for the case study. The results obtained by the IRBSO for this case and other methods, which have been reported in the literature, are summarized in Table 4, which shows the total cost values achieved using the IRBSO algorithm for the demand response, average discharge and no ice storage tank to be better than those of the PSO, TVAC-PSO and BSO methods.

Table 4. The ice storage air conditioning with dynamic electricity price on a summer day (16 July 2013).

Modeling Results	Total Cost (NT\$)			
	PSO [17]	TVAC-PSO [21]	BSO [21]	IRBSO
Demand Response	203,641	202,615	202,754	201,142
Average Discharge *	207,341	206,072	206,162	204,741
No Ice storage Tank	218,648	217,861	217,874	217,298

* Average Discharge: The cooling load of discharge is identical.

From Figure 5, the ice storage tank of demand response supplies the required cooling load during peak periods and all chillers are appropriately dispatched to achieve minimal cost on a summer day for IRBSO. The improvement of the IRBSO over other algorithms was clear. Figure 6 illustrates the convergence characteristics of PSO, TVAC-PSO, BSO and IRBSO in the demand response scenario, which also showed the capacity of IRBSO to explore a more likely global optimum. The demand response modeling total cost of 201142 (NT\$) for the IRBSO used in case study. The results, showed the capability of IRBSO to explore a more likely global optimum.

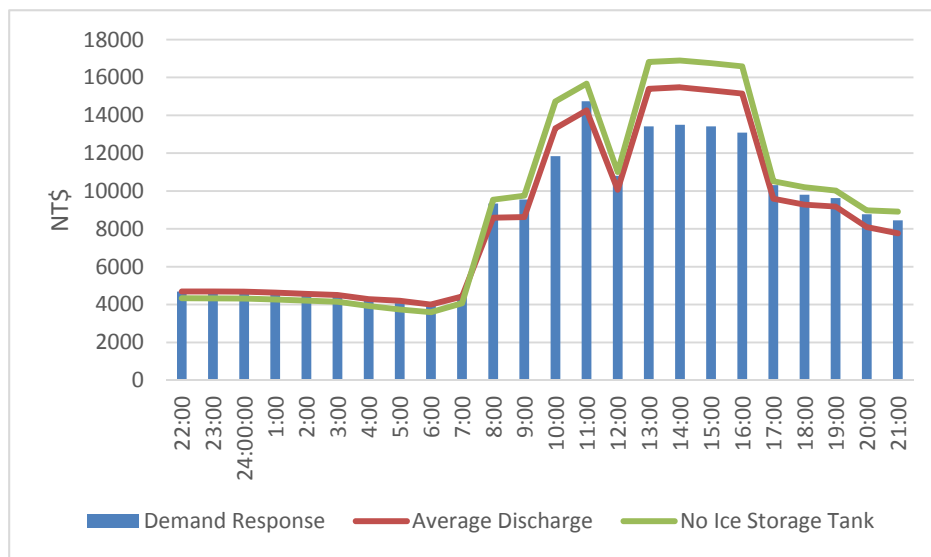


Figure 5. The dynamic electricity price on a summer day (16 July 2013) for IRBSO.

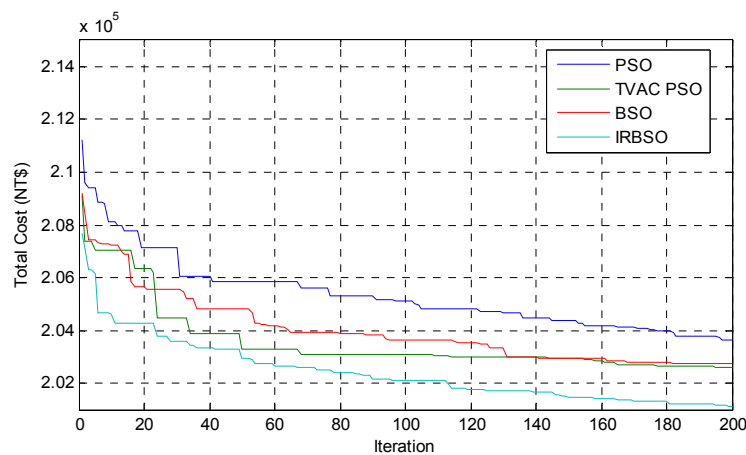


Figure 6. Convergence characteristics of PSO, TVAC-PSO, BSO and IRBSO for demand response scenario.

Table 5 shows the ice storage air conditioning of average discharge and Tables 6 and 7 show the IRBSO at the dynamic electricity price intervals for demand response.

Table 5. The IRBSO for ice storage air conditioning of average discharge.

Hours	Ice Storage Tank Cooling Load (RT)	Cooling Load of Chiller (RT)						Total Cooling Load (RT)
		Discharging	$P_{chiller,1}$	$P_{chiller,2}$	$P_{chiller,3}$	$P_{chiller,4}$	$P_{chiller,5}$	
22:00	0	0	0	1000.00	783.00	1000.00	1000.00	3783
23:00	0	0	0	1000.00	782.15	999.85	1000.00	3782
24:00	0	0	0	1000.00	798.92	972.08	1000.00	3771
01:00	0	0	0	1000.00	760.00	965.00	1000.00	3725
02:00	0	0	0	1000.00	680.87	988.13	1000.00	3669
03:00	0	0	0	1000.00	611.48	994.52	1000.00	3606
04:00	0	0	0	1000.00	629.19	773.81	1000.00	3403
05:00	0	499.76	0	440.21	921.86	1000.00	354.17	3216
06:00	0	0	0	720.77	916.90	983.37	481.96	3103
07:00	0	0	0	1000.00	568.55	962.45	1000.00	3531
08:00	475	0	293.57	1000.00	955.09	1000.00	342.34	4066

Table 5. Cont.

Hours	Ice Storage Tank Cooling Load (RT)	Cooling Load of Chiller (RT)						Total Cooling Load (RT)
	Discharging	$P_{chiller,1}$	$P_{chiller,2}$	$P_{chiller,3}$	$P_{chiller,4}$	$P_{chiller,5}$	$P_{chiller,6}$	
09:00	475	0	345.57	999.38	996.32	1000.00	303.74	4120
10:00	475	0	414.74	1000.00	994.66	1000.00	321.60	4206
11:00	475	0	254.31	1000.00	752.69	1000.00	1000.00	4482
12:00	475	267.44	460.44	1000.00	976.62	1000.00	456.50	4636
13:00	475	480.75	376.12	1000.00	967.31	1000.00	437.82	4737
14:00	475	165.00	281.12	1000.00	838.88	1000.00	1000.00	4760
15:00	475	379.96	550.00	1000.00	968.16	1000.00	344.88	4718
16:00	475	550.00	344.89	1000.00	983.67	1000.00	312.43	4666
17:00	475	0	225.44	1000.00	805.56	1000.00	1000.00	4506
18:00	475	193.67	0	1000.00	652.33	1000.00	1000.00	4321
19:00	475	0	450.70	1000.00	772.13	859.60	686.58	4244
20:00	475	0	0	1000.00	610.64	813.36	1000.00	3899
21:00	475	0	0	1000.00	582.00	731.00	1000.00	3788
Total	6650	2536.59	3996.90	23,160.36	19,308.99	23,043.15	18,042.01	96,738

Table 6. The IRBSO for ice storage air conditioning of demand response.

Hours	Cooling Load of Ice Storage Tank (RT)	Cooling Load of Chiller (RT)						Total Cooling Load (RT)
	Discharging	$P_{chiller,1}$	$P_{chiller,2}$	$P_{chiller,3}$	$P_{chiller,4}$	$P_{chiller,5}$	$P_{chiller,6}$	
22:00	0	0	0	1000.00	786.36	1000.00	996.64	3783
23:00	0	0	0	1000.00	782.00	1000.00	1000.00	3782
24:00	0	0	0	998.26	842.82	929.93	1000.00	3771
01:00	0	0	0	1000.00	725.00	1000.00	1000.00	3725
02:00	0	0	0	1000.00	688.88	983.58	996.54	3669
03:00	0	0	0	983.91	622.09	1000.00	1000.00	3606
04:00	0	0	0	1000.00	659.58	743.42	1000.00	3403
05:00	0	0	0	1000.00	809.21	848.97	557.82	3216
06:00	0	0	0	755.94	909.21	995.27	442.58	3103
07:00	0	0	0	978.68	669.39	882.93	1000.00	3531
08:00	100	0	550.00	1000.00	925.35	1000.00	490.65	4066
09:00	100	169.46	0	1000.00	850.54	1000.00	1000.00	4120
10:00	1057.726	0	325.62	482.74	968.98	1000.00	370.93	4206
11:00	319.6618	0	343.19	1000.00	944.07	875.07	1000.00	4482
12:00	100	197.53	550.00	1000.00	788.47	1000.00	1000.00	4636
13:00	1116.346	174.34	294.55	1000.00	851.77	1000.00	300.00	4737
14:00	1113.229	173.51	286.96	1000.00	874.95	1000.00	311.34	4760
15:00	1096.856	201.34	267.54	1000.00	843.24	1000.00	309.03	4718
16:00	1146.381	166.58	267.72	1000.00	780.58	1000.00	304.74	4666
17:00	100	0	406.00	1000.00	1000.00	1000.00	1000.00	4506
18:00	100	0	306.47	1000.00	914.53	1000.00	1000.00	4321
19:00	100	0	309.28	1000.00	834.72	1000.00	1000.00	4244
20:00	100	0	0	1000.00	799.00	1000.00	1000.00	3899
21:00	100	0	0	1000.00	730.04	957.96	1000.00	3788
Total	6650	1082.76	3907.34	23,199.52	19,600.77	23,217.13	19,080.27	96,738

Table 7. Power loads of demand response for IRBSO.

Hours	Process	Ice Storage (kW)	Chiller Capacity (kW)	SU & SD (kW)	Total (kW)	Total Cost (NT\$)
22:00	Charging	377.66	2757.33	0	3134.99	4684.76
23:00	Charging	377.66	2756.03	0	3133.69	4682.72
24:00	Charging	377.66	2754.67	0	3132.33	4680.59
01:00	Charging	377.66	2716.81	0	3094.47	4621.15
02:00	Charging	377.66	2680.94	0	3058.59	4564.82

Table 7. Cont.

Hours	Process	Ice Storage (kW)	Chiller Capacity (kW)	SU & SD (kW)	Total (kW)	Total Cost (NT\$)
03:00	Charging	377.66	2638.95	0	3016.60	4498.90
04:00	Charging	377.66	2502.73	0	2880.39	4285.04
05:00	Charging	377.66	2370.06	0	2747.71	4076.74
06:00	Charging	377.66	2290.54	0	2668.20	3951.90
07:00	Charging	377.66	2593.62	0	2971.28	4427.74
08:00	Discharging	5.32	2948.25	30	2953.57	9338.56
09:00	Discharging	5.32	2986.76	60	2992.08	9553.02
10:00	Discharging	76.31	2366.56	60	2442.87	11838.57
11:00	Discharging	24.38	3093.55	0	3117.93	14747.79
12:00	Discharging	5.32	3414.46	30	3419.79	10797.83
13:00	Discharging	77.32	2759.21	0	2836.54	13416.82
14:00	Discharging	77.29	2777.48	0	2854.77	13503.05
15:00	Discharging	77.07	2759.79	0	2836.86	13418.34
16:00	Discharging	77.56	2689.13	0	2766.68	13086.42
17:00	Discharging	5.32	3258.81	30	3264.13	10310.63
18:00	Discharging	5.32	3125.70	0	3131.02	9800.10
19:00	Discharging	5.32	3071.31	0	3076.63	9629.86
20:00	Discharging	5.32	2767.83	30	2773.16	8773.88
21:00	Discharging	5.32	2695.15	0	2700.47	8452.48
Total		4229.05	700.00	240	71,004.73	201,141.71

Figure 7 shows the respective approximate thermal energy stored in the ice storage tank during the charging and discharging processes, *i.e.*, the building cooling load. As Figures 7 and 8 show, during off-peak hours for the cooling load of chiller units, the ice-storage tank is in a charging process. During peak-load hours, the discharging process of the ice-storage tank provides the building’s required cooling load. As the results show, the ice storage air-conditioning system utilizing IRBSO for the demand response evidenced better planning of the charging and discharging procedures.

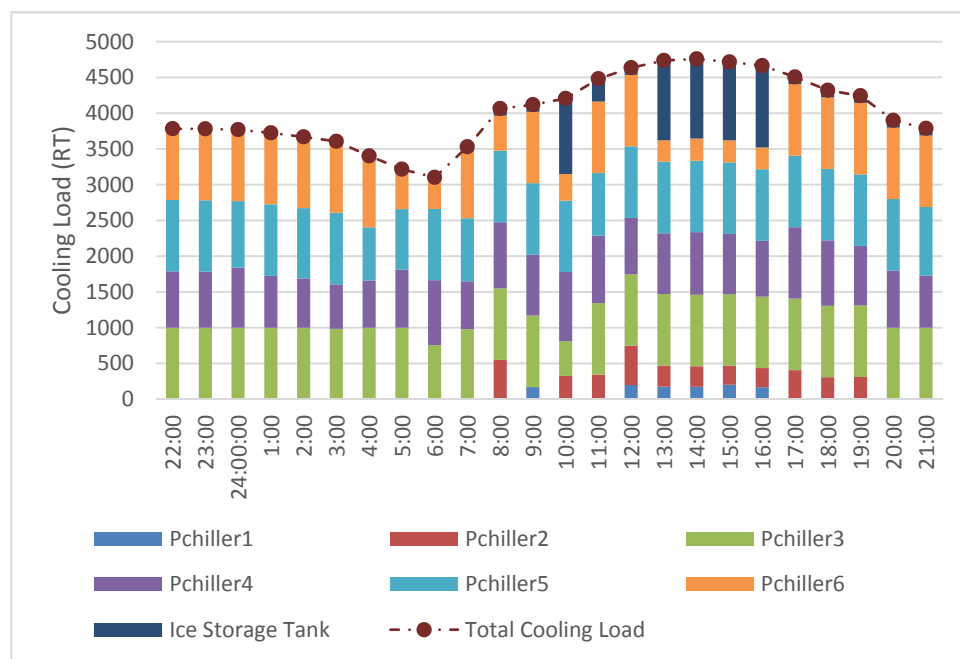


Figure 7. Cooling capability provided by each chiller and the ice storage tank on a summer day (16 July 2013).

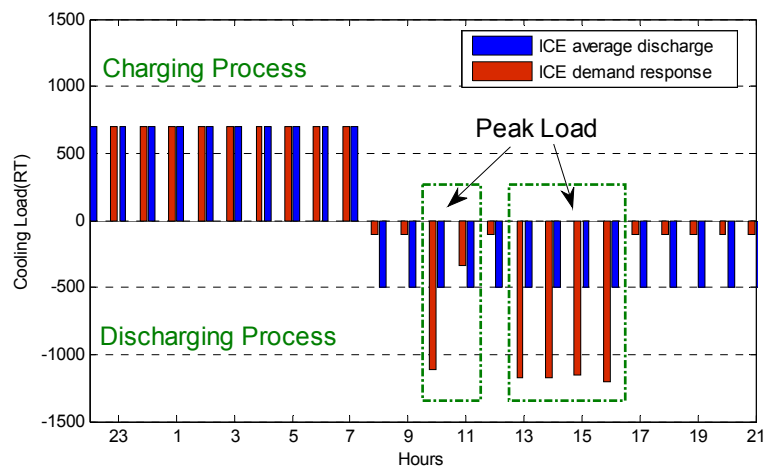


Figure 8. Operating types of ice storage tank in summer.

4.2. Simulation of Demand Response

From Table 8, the total power consumption of a day did not clearly change but Table 9 clearly shows the maximum peak-load reduction in the summer, with the drop in power cost dependent on the dynamic electricity price.

Table 8. Power load for dynamic electricity price in case study.

Modeling Results	Total Power (kW)			
	PSO [17]	TVAC-PSO [17]	BSO [18]	IRBSO
Demand Response	71,298	71,276	71,281	71,245
Average Discharge	71,403	71,382	71,393	71,182
No Ice storage Tank	71,618	71,609	71,613	71,549

Table 9. Power load and dynamic electricity price for case results.

IRBSO	Modeling Results	Max. Load of Peak (kW)	Average Load of Peak (kW)	Max. Load of Partial-Peak (kW)	Min. Off-Peak load (kW)	Load Range * (kW)
Summer	Demand Response	3117.93	2809.27	3449.79	2668.20	449.73
	Average Discharge	3273.08	3133.38	3185.26	2671.36	601.72
	No Ice Storage Tank	3572.16	3434.18	3484.64	2290.03	1282.13

* Load Range = (Max. Peak load) – (Min. Off-peak load).

Table 9 shows the load range of the demand response to be 449.73 kW less than the average discharge of 601.72 kW, and 1282.13 kW with no ice storage tank in the summer. As Tables 7 and 9 and the Figure 9 show, the average peak load of demand response average was 2809.27 kW less than the average discharge of 324.11 kW, and that with no ice storage tank as 624.91 kW. The system's maximum partial-peak load for the demand response was higher than the average discharge, but less than with no ice storage tank. There was a clear load shifting of the demand response in summer, as shown in Figure 9.

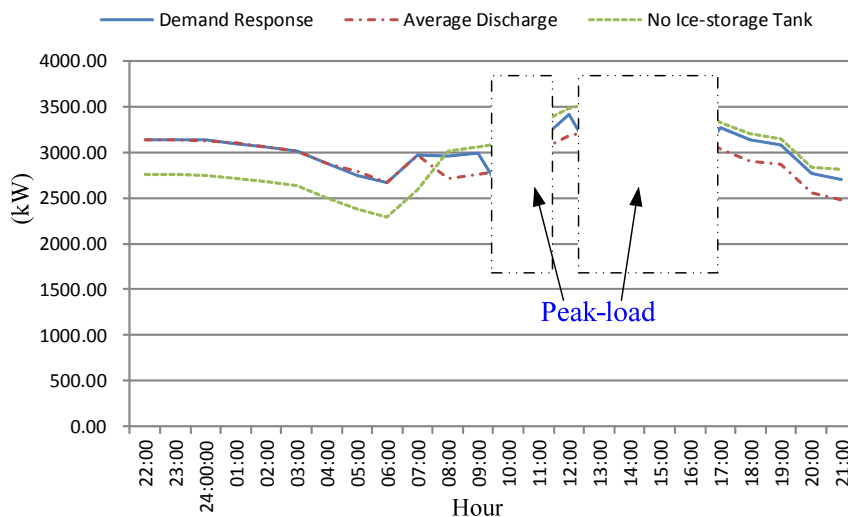


Figure 9. Simulation of dynamic electricity price.

5. Conclusions

This paper has presented the IRBSO algorithm to solve the ice storage air-conditioning system simulation and dynamic electricity price for the demand response problem. The IRBSO improved moving patterns and repulsion techniques for the diversity of solutions. In the test cases, the operating coefficients and cooling capacity of the chillers and ice storage tank were measured, and LSM was used to construct the curve model of the power consumption and cooling load. Based on the dynamic electricity price and all technical constraints, the dispatch model of the ice storage air-conditioning system was formulated by considering the ice storage discharging scheduling of demand response. This method could also improve the operating efficiency of ice storage and air-conditioning equipment. The planning of the charge and discharge processes of the ice storage tank for demand response study enhanced the operating efficiency of the chillers. This paper also provide greater energy efficiency in dispatching chillers and ice storage, thus reducing a user's electricity bill. The actual cases were used to verify the effectiveness of the proposed method.

Acknowledgments: This research work was supported in part by the research grants of Chang Gung Memorial Hospital under grant numbers CORPG8C1161-2 and CORPG8E0141-2. The funders had no role in study design, data collection and analysis, decision to publish, or preparation of the manuscript.

Author Contributions: Chi-Chun Lo designed the algorithm and handed the project, Bor-Shyh Lin prepared the manuscript as the corresponding author. Shang-Ho Tsai managed to obtain the data from fields and performed the experiments and conducted simulations.

Conflicts of Interest: The authors declare no conflict of interest.

References

1. Chua, K.J.; Chou, S.K.; Yang, W.M.; Yan, J. Achieving better energy-efficient air conditioning—A review of technologies and strategies. *Appl. Energy* **2013**, *104*, 87–104. [[CrossRef](#)]
2. Yan, C.; Xue, X.; Wang, S.; Cui, B. A novel air-conditioning system for proactive power demand response to smart grid. *Energy Convers. Manag.* **2015**, *102*, 239–246. [[CrossRef](#)]
3. Sanaye, S.; Shirazi, A. Thermo-economic optimization of an ice thermal energy storage system for air-conditioning applications. *Energy Build.* **2013**, *60*, 100–109. [[CrossRef](#)]
4. The Taiwan Power Company (TPC). *Time-of-Use Rate for Cogenerator Plants*; The Electricity Rate Structure for Taipower Company: Taipei, Taiwan, 2014.
5. Chassin, D.P.; Stoustrup, J.; Agathoklis, P.; Djilali, N. A new thermostat for real-time price demand response: Cost comfort and energy impacts of discrete-time control without deadband. *Appl. Energy* **2015**, *155*, 816–825. [[CrossRef](#)]

6. Braun, J.E.; Kleni, S.A.; Mitchell, J.W.; Beckman, W.A. Applications of optimal control to chilled water systems without storage. *ASHRAE Trans.* **1989**, *95*, 663–675.
7. Lee, W.S.; Chen, Y.T.; Wu, T.H. Optimization for ice-storage air-conditioning system using swarm algorithm. *Appl. Energy* **2009**, *86*, 1589–1595. [[CrossRef](#)]
8. Sehar, F.; Rahman, S.; Pipattanasomporn, M. Impacts of ice storage on electrical energy consumptions in office buildings. *Energy Build.* **2012**, *51*, 255–262. [[CrossRef](#)]
9. Sebzali, M.J.; Rubini, P.A. The impact of using chilled water storage systems on the performance of air cooled chillers in Kuwait. *Energy Build.* **2007**, *39*, 975–984. [[CrossRef](#)]
10. Sebzali, M.J.; Rubini, P.A. Analysis of ice cool thermal storage for a clinic building in Kuwait. *Energy Convers. Manag.* **2006**, *47*, 3417–3434. [[CrossRef](#)]
11. Chan, A.L.S.; Chow, T.T.; Fong, S.K.F.; Lin, J.Z. Performance evaluation of district cooling plant with ice storage. *Energy* **2006**, *31*, 2750–2762. [[CrossRef](#)]
12. Vo, D.N.; Ongsakul, W. Economic dispatch with multiple fuel types by enhanced augmented Lagrange Hopfield network. *Appl. Energy* **2012**, *91*, 281–289. [[CrossRef](#)]
13. Alsumait, J.S.; Sykulski, J.K.; Al-Othman, A.K. A hybrid GA–PS–SQP method to solve power system valve-point economic dispatch problems. *Appl. Energy* **2010**, *87*, 1773–1781. [[CrossRef](#)]
14. Sinha, N.; Chakrabarti, R.; Chattopadhyay, P.K. Evolutionary programming techniques for economic load dispatch. *IEEE Trans. Evolut. Comput.* **2003**, *7*, 83–94. [[CrossRef](#)]
15. Jahanbani Ardakani, A.; Fattahi Ardakani, F.; Hosseinian, S.H. A novel approach for optimal chiller loading using particle swarm optimization. *Energy Build.* **2008**, *40*, 2177–2187. [[CrossRef](#)]
16. Lee, W.S.; Lin, L.C. Optimal chiller loading by particle swarm algorithm for reducing energy consumption. *Appl. Therm. Eng.* **2009**, *29*, 1730–1734. [[CrossRef](#)]
17. Wang, X.; Dennis, M.; Hou, L. Clathrate hydrate technology for cold storage in air conditioning systems. *Renew. Sustain. Energy Rev.* **2014**, *36*, 34–51. [[CrossRef](#)]
18. Chen, H.J.; Wang, W.P.; Chen, S.L. Optimization of an ice-storage air conditioning system using dynamic programming method. *Appl. Therm. Eng.* **2005**, *25*, 461–472. [[CrossRef](#)]
19. Behnam, M.I.; Abbas, R.; Mehdi, E. Time-varying acceleration coefficients IPSO for solving dynamic economic dispatch with non-smooth cost function. *Energy Convers. Manag.* **2012**, *56*, 175–183.
20. Ratnaweera, A.; Halgamuge, S.; Watson, H.C. Self-organizing hierarchical particle swarm optimizer with time-varying acceleration coefficients. *IEEE Trans. Evolut. Comput.* **2004**, *8*, 240–255. [[CrossRef](#)]
21. Niknam, T.; Golestaneh, F. Enhanced bee swarm optimization algorithm for dynamic economic dispatch. *IEEE Syst. J.* **2013**, *7*, 754–762. [[CrossRef](#)]
22. Taher, N.; Seyed, I.T.; Jamshid, A.; Sajad, T.; Majid, N. A modified honey bee mating optimization algorithm for multiobjective placement of renewable energy resources. *Appl. Energy* **2011**, *88*, 4817–4830.

