

Article

Quantitative Immobilization of Phthalocyanine onto Bacterial Cellulose for Construction of High Performance Catalytic Membrane Reactor

Shiliang Chen*, Qiaoling Teng

Qianjiang College, Hangzhou Normal University, Hangzhou 310012, China; tengql1996@sina.com (Q.T.)

* Correspondence: bruceblue@zju.edu.cn (S.C.); Tel.: +86 571 28861372

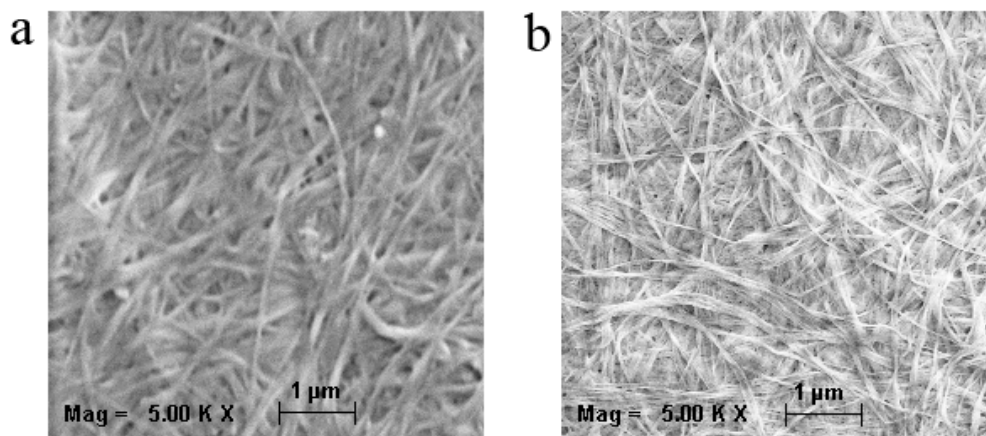


Figure S1. FESEM of (a) pure BC, and (b) CoPc@BC.

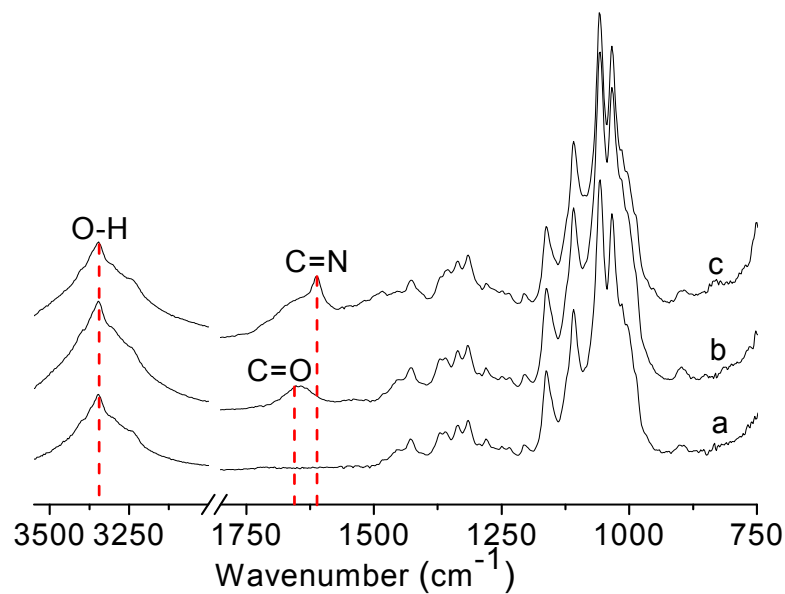


Figure S2. ATR/FT-IR spectra of (a) BC, (b) oxidized BC, and (c) CoPc@BC.

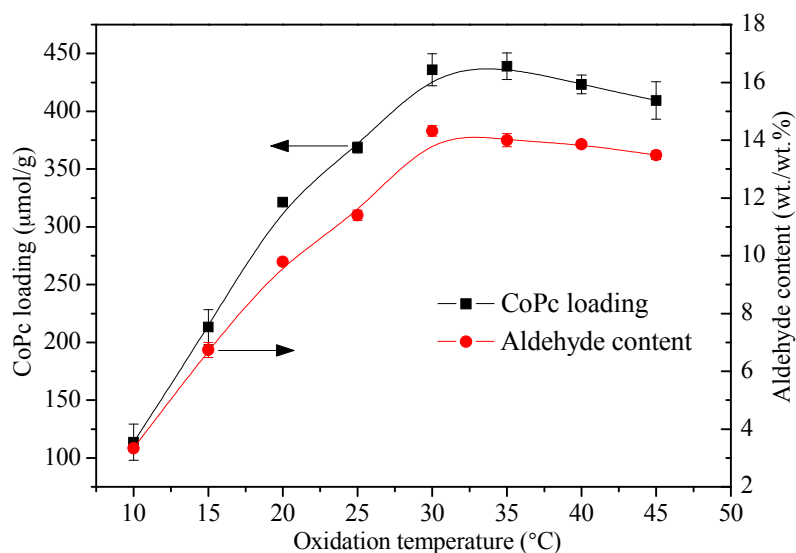


Figure S3. Effect of oxidation temperature on CoPc loading of CoPc@BC (filled square) and aldehyde content of BC (filled circle), $[\text{NaIO}_4]=30$ mmol/L, reaction time=8 h.

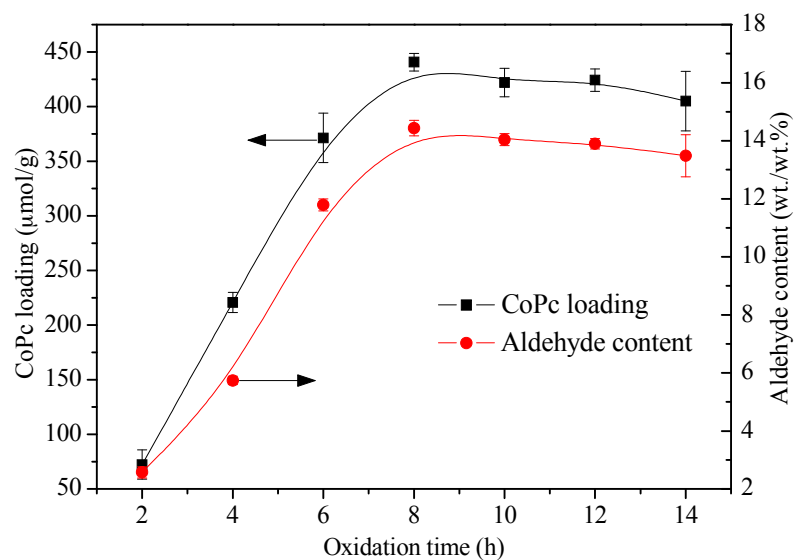


Figure S4. Effect of oxidation time on CoPc loading of CoPc@BC (filled square) and aldehyde content of BC (filled circle), $[\text{NaIO}_4]=30$ mmol/L, $T=30$ °C.

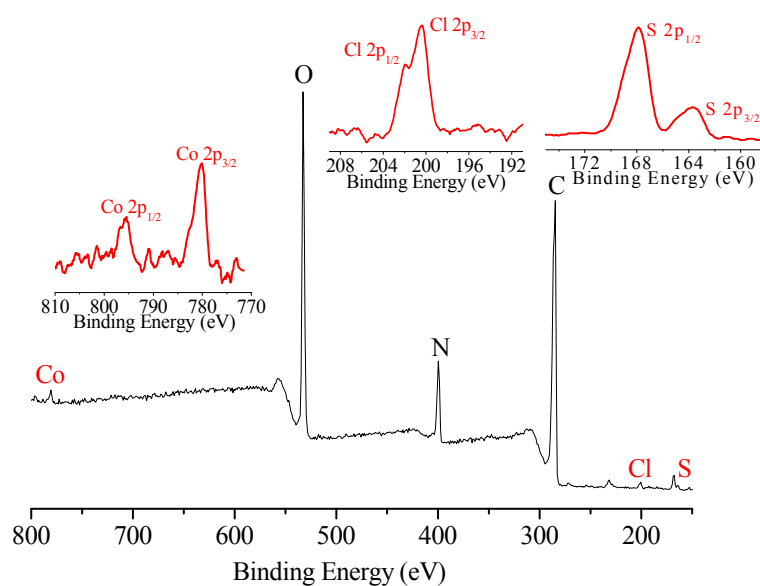


Figure S5. XPS of surface of CoPc@BC after dye adsorption. Left inset: detail of Co region, middle inset: detail of Cl region, right inset: detail of S region.

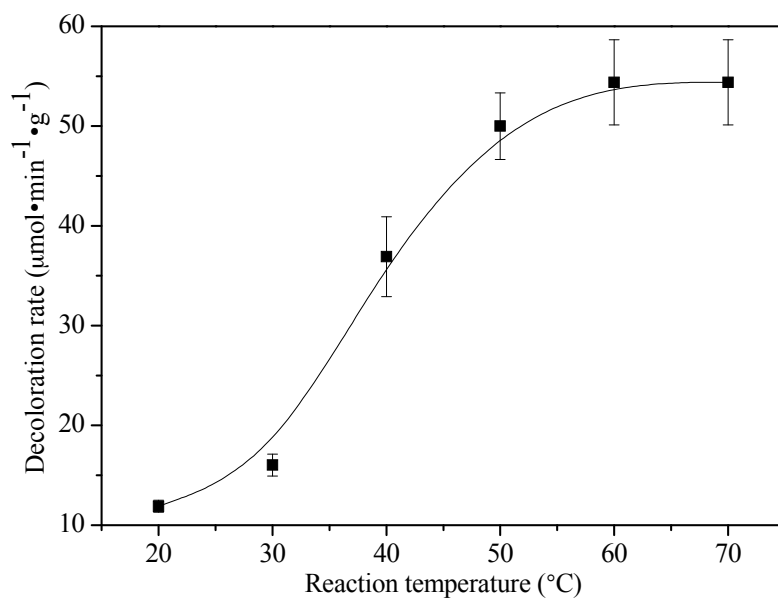


Figure S6. Effect of reaction temperature on decoloration rate of reactive red X-3B (flow rate: 6 mL/min, H₂O₂ concentration: 10 mmol/L).

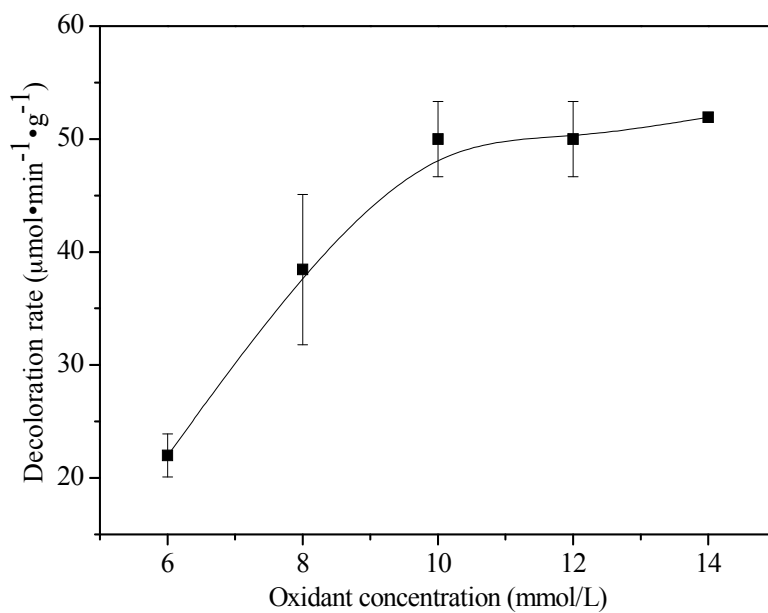


Figure S7. Effect of initial H₂O₂ concentration on decoloration rate of reactive red X-3B (flow rate: 6 mL/min, T=50 °C).

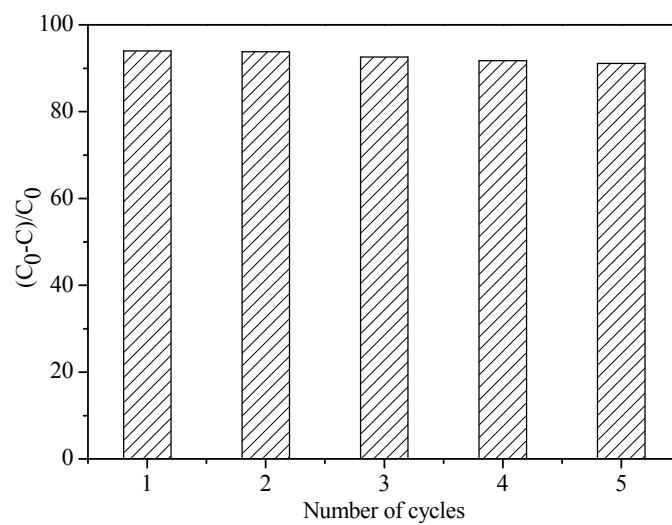


Figure S8. Repetitive catalytic oxidation of reactive red X-3B (initial concentration: 1×10^{-4} mol/L, CoPc@BC: 1.60 mg, flow rate: 6 mL/min, H₂O₂ concentration: 10 mmol/L, T=50 °C) for 60 min.