

Article

The Effect of Processing Route on Properties of HfNbTaTiZr High Entropy Alloy

Jaroslav Málek ^{1,2,*}, Jiří Zýka ¹, František Lukáč ^{3,4}, Monika Vilémová ³, Tomáš Vlasák ⁴, Jakub Čížek ⁴, Oksana Melikhova ⁴ Adéla Macháčková ⁵ and Hyoung Seop Kim ⁶

¹ UJP PRAHA a.s., Nad Kamínkou 1345, 156 10 Prague-Zbraslav, Czech Republic; zyka@ujp.cz (J.Z.)

² CTU in Prague-Faculty of Mechanical Engineering, Karlovo náměstí 13, 121 35 Praha 2, Czech Republic

³ Institute of Plasma Physics CAS, 182 00 Praha 8, Czech Republic; lukac@ipp.cas.cz (F.L.); vilemova@ipp.cas.cz (M.V.).

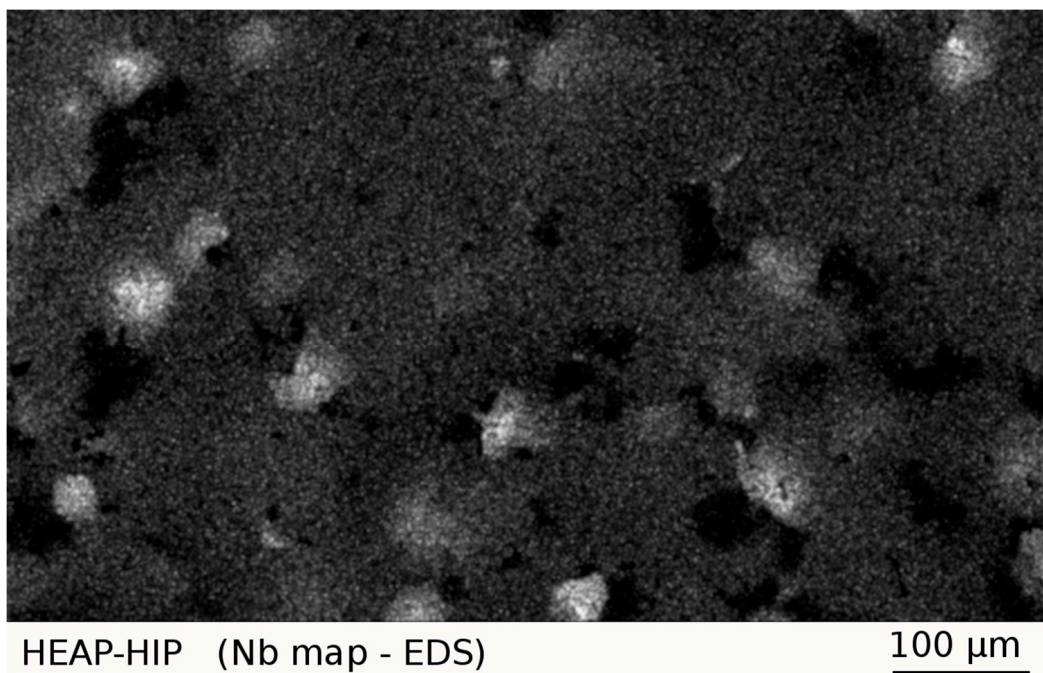
⁴ Faculty of Mathematics and Physics, Charles University, 180 00 Praha 8, Czech Republic; jakub.cizek@mff.cuni.cz (J.C.); tomas.vlasak@seznam.cz (T.V.); Oksana.Melikhova@mff.cuni.cz (O.M.).

⁵ Faculty of Materials Science and Technology, VŠB-Technical University of Ostrava, 17. Listopadu 15, 708 33 Ostrava 8, Czech Republic; adela.machackova@vsb.cz (A.M.)

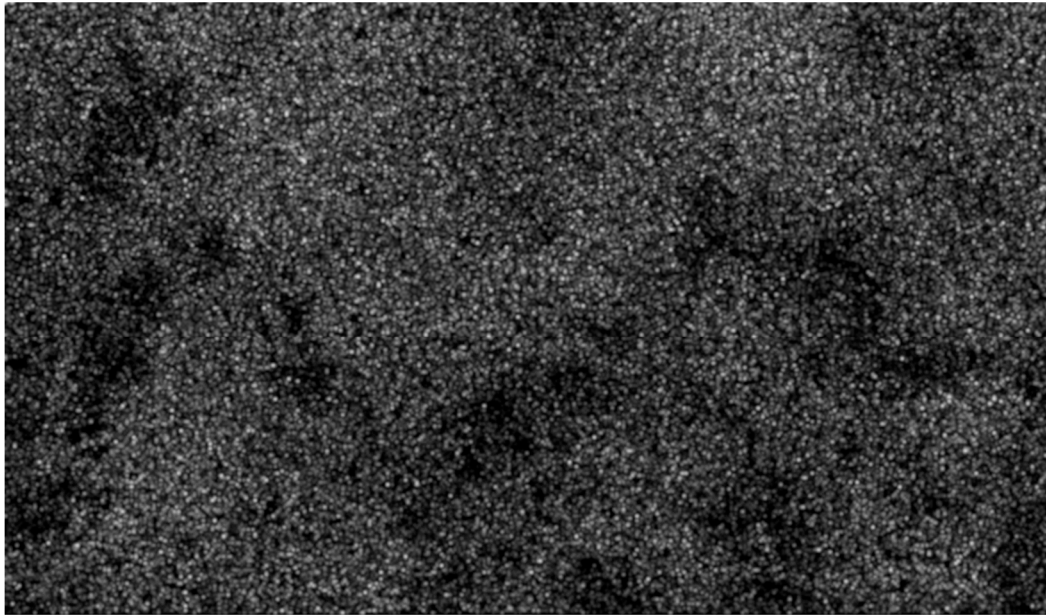
⁶ Department of Materials Science and Engineering, POSTECH, Pohang, 790-784, South Korea; hyoungseopkim@gmail.com (H.K.)

* Correspondence: jardamalek@seznam.cz (J.M.)

Received: 5 November 2019; Accepted: 27 November 2019; Published: date



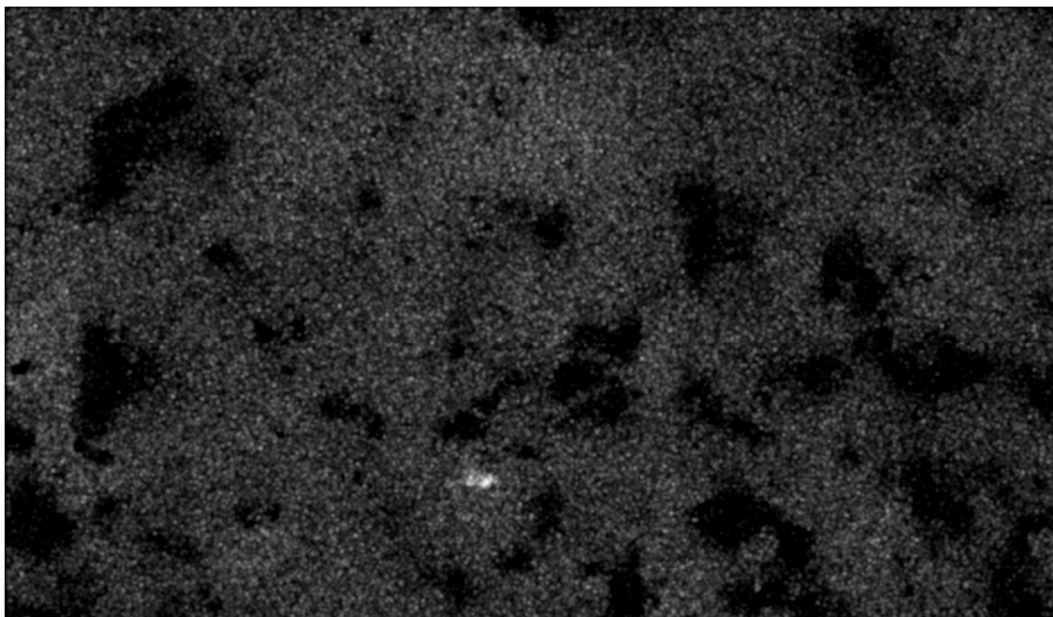
(a)



HEAP-HIP (Ti map - EDS)

100 μm

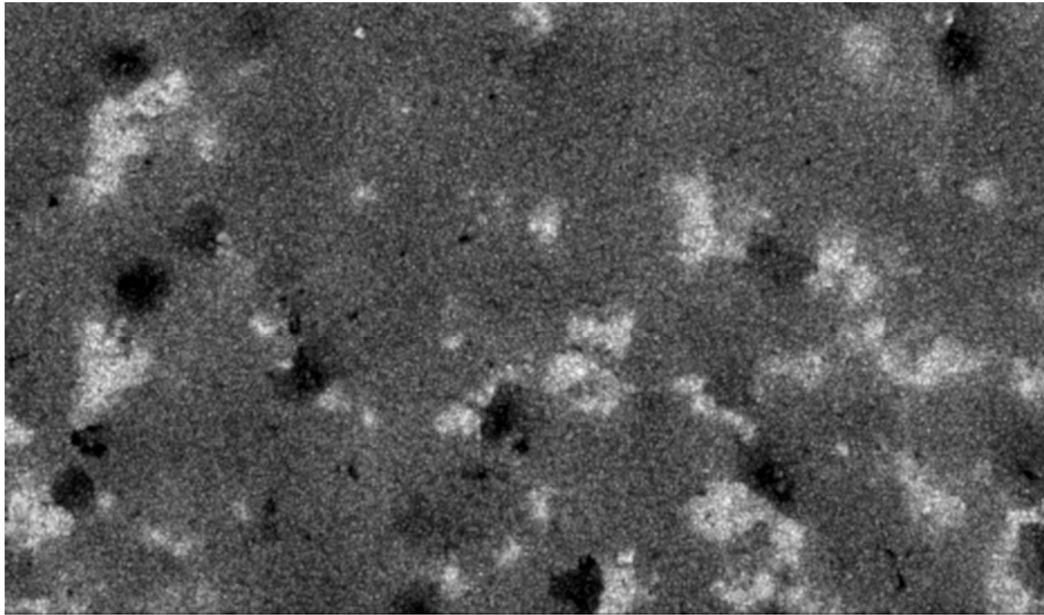
(b)



HEAP-HIP (Zr map - EDS)

100 μm

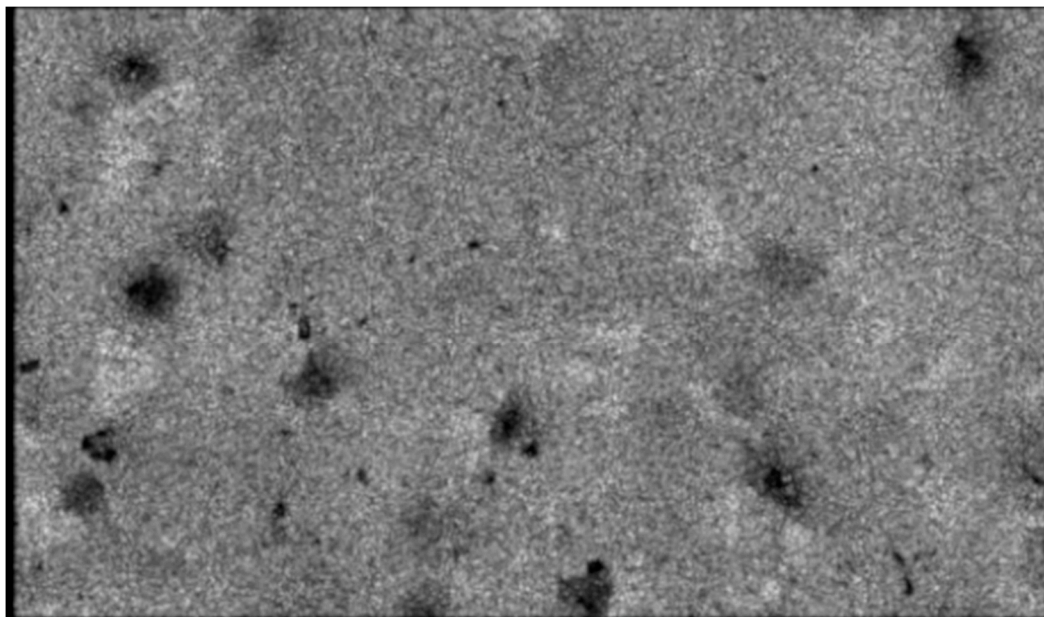
(c)



HEAP-HIP (Ta map - EDS)

100 μm

(d)



HEAP-HIP (Hf map - EDS)

100 μm

(e)

Figure S1. (a) Nb; (b) Ti; (c) Zr; (d) Ta; (e): Hf.