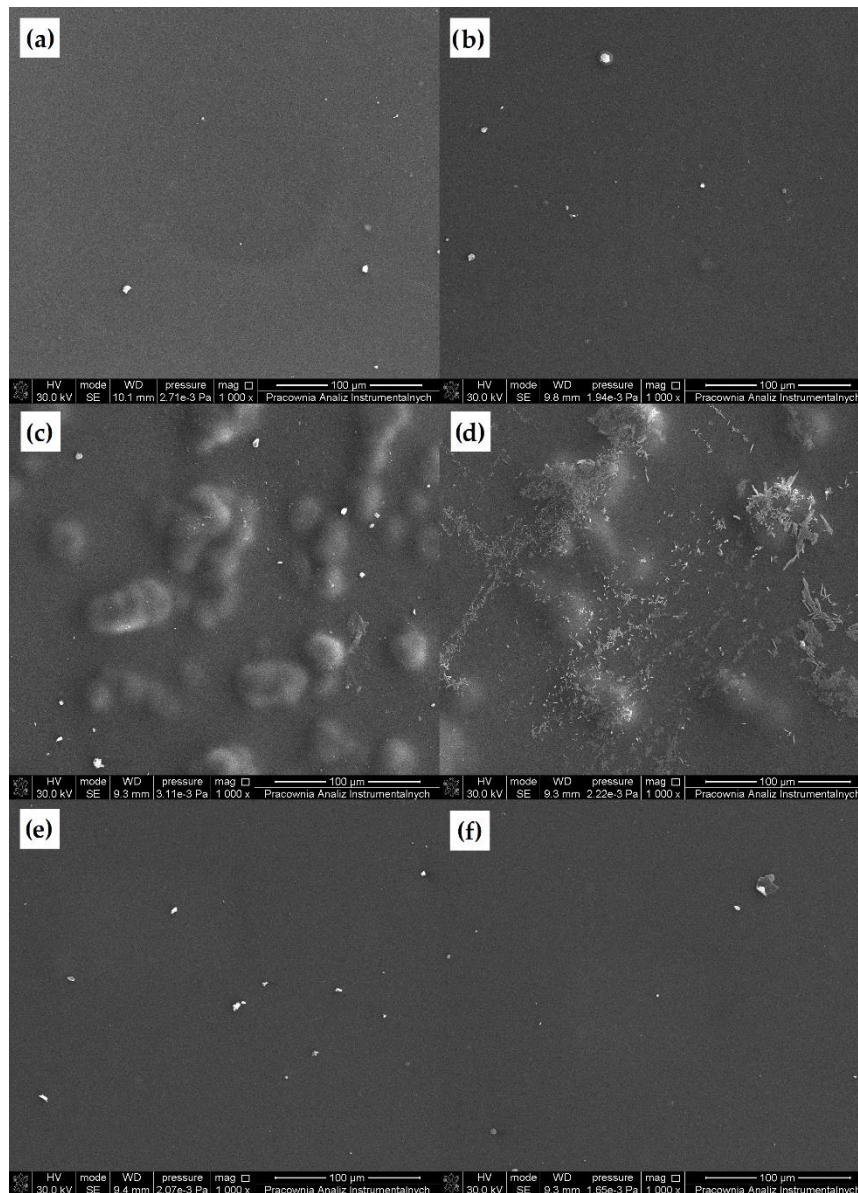
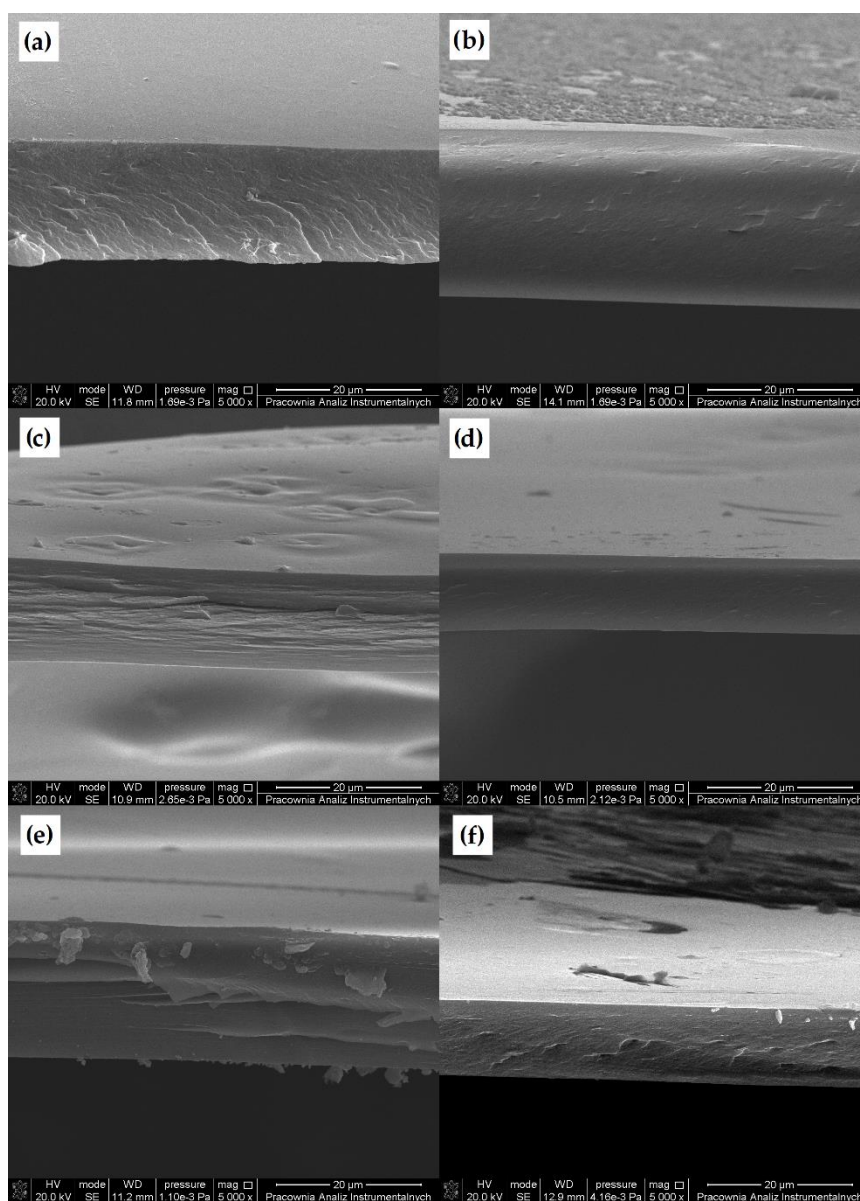


Supplementary Material

# Crosslinking of Chitosan with Dialdehyde Chitosan as A New Approach for Biomedical Applications



**Figure S1.** SEM images of chitosan films cross-linked by (a) 10%, (b) 15% DACS, (c) 10%, (d) 15% DAS, and (e) 10%, (f) 15% Glu.



**Figure S2.** SEM images of the cross-section of chitosan films cross-linked by (a) 10%, (b) 15% DACS, (c) 10%, (d) 15% DAS, and (e) 10%, (f) 15% Glu.



© 2020 by the authors. Submitted for possible open access publication under the terms and conditions of the Creative Commons Attribution (CC BY) license (<http://creativecommons.org/licenses/by/4.0/>).