

Supplementary Materials

# Thermal and Flame Retardant Properties of Phosphate-Functionalized Silica/Epoxy Nanocomposites

Il Jin Kim <sup>1,2,†</sup>, Jae Wang Ko <sup>1,2,†</sup>, Min Seop Song <sup>1</sup>, Ji Won Cheon <sup>1,2</sup>, Dong Jin Lee <sup>1</sup>, Jun Woo Park <sup>3</sup>, Seunggun Yu <sup>4,\*</sup> and Jin Hong Lee <sup>2,\*</sup>

<sup>1</sup> New Functional Components Research Team, Korea Institute of Footwear and Leather Technology (KIFLT), Busan 47154, Korea; [ijkim@kiflt.re.kr](mailto:ijkim@kiflt.re.kr) (I.J.K.); [jwko@kiflt.re.kr](mailto:jwko@kiflt.re.kr) (J.W.K.); [sonochemical@gmail.com](mailto:sonochemical@gmail.com) (M.S.S.); [jwcheon@kiflt.re.kr](mailto:jwcheon@kiflt.re.kr) (J.W.C.); [almanig84@gmail.com](mailto:almanig84@gmail.com) (D.J.L.)

<sup>2</sup> Department of Organic Material Science and Engineering, Pusan National University, Busan 46421, Korea; [jinhong.lee@pusan.ac.kr](mailto:jinhong.lee@pusan.ac.kr)

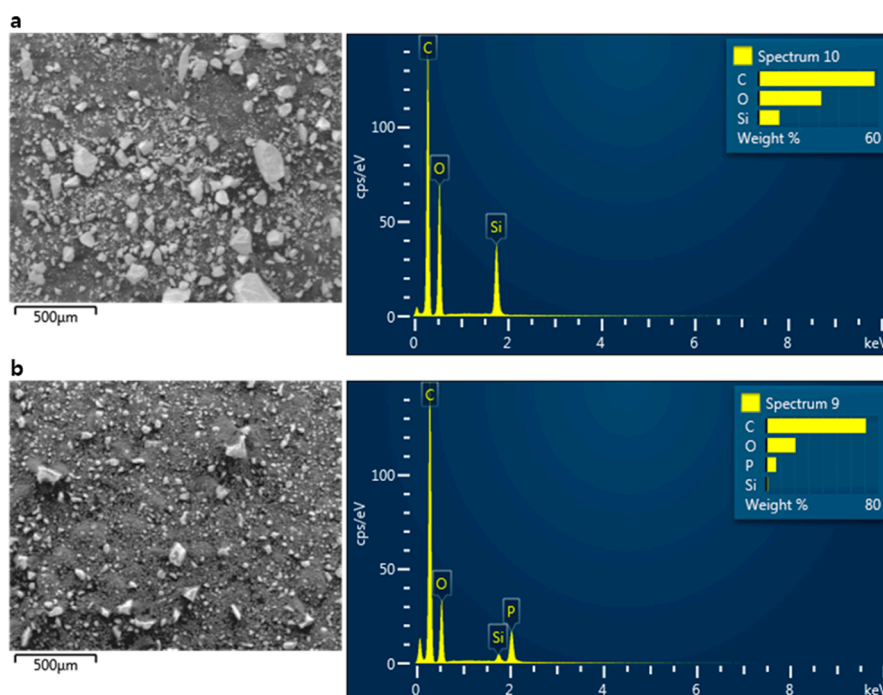
<sup>3</sup> Next Generation Battery Research Center, Korea Electrotechnology Research Institute (KERI), Changwon 51543, Korea; [jwpark@kiflt.re.kr](mailto:jwpark@kiflt.re.kr)

<sup>4</sup> Insulation Materials Research Center, Korea Electrotechnology Research Institute (KERI), Changwon 51543, Korea; [viola@keri.re.kr](mailto:viola@keri.re.kr)

\* Correspondence: [viola@keri.re.kr](mailto:viola@keri.re.kr) (S.Y.); [jinhong.lee@pnu.ac.kr](mailto:jinhong.lee@pnu.ac.kr) (J.H.L.)

† These authors are equally contributed.

**Received:** 29 October 2020; **Accepted:** 25 November 2020; **Published:** 28 November 2020



**Figure S1.** SEM and EDS spectrum of (a) GPTMS-*t*-SiO<sub>2</sub> NPs and (b) DOPO-*t*-SiO<sub>2</sub> NPs, respectively.