

Supplementary Information

# Graphene Oxide Carboxymethylcellulose Nanocomposite for Dressing Materials

Maria Luisa Saladino <sup>1,\*</sup>, Marta Markowska <sup>2,3</sup>, Clara Carmone <sup>1</sup>, Patrizia Cancemi <sup>1</sup>, Rosa Alduina <sup>1</sup>, Alessandro Presentato <sup>1</sup>, Roberto Scaffaro <sup>4</sup>, Dariusz Biały <sup>3,5,\*</sup>, Mariusz Hasiak <sup>6</sup>, Dariusz Hreniak <sup>2,3</sup> and Magdalena Wawrzyńska <sup>3,5,\*</sup>

<sup>1</sup> Department of Biological, Chemical and Pharmaceutical Sciences and Technologies (STEBICEF), University of Palermo, Viale delle Scienze Bld. 16-17, I-90128 Palermo, Italy; claracarmone@gmail.com (C.C.); patrizia.cancemi@unipa.it (P.C.); valeria.alduina@unipa.it (R.A.); alessandro.presentato@unipa.it (A.P.)

<sup>2</sup> Institute of Low Temperature and Structure Research, Polish Academy of Sciences, Okólna 2, PL-50-422 Wrocław, Poland; m.markowska@intibs.pl (M.M.); d.hreniak@intibs.pl (D.H.)

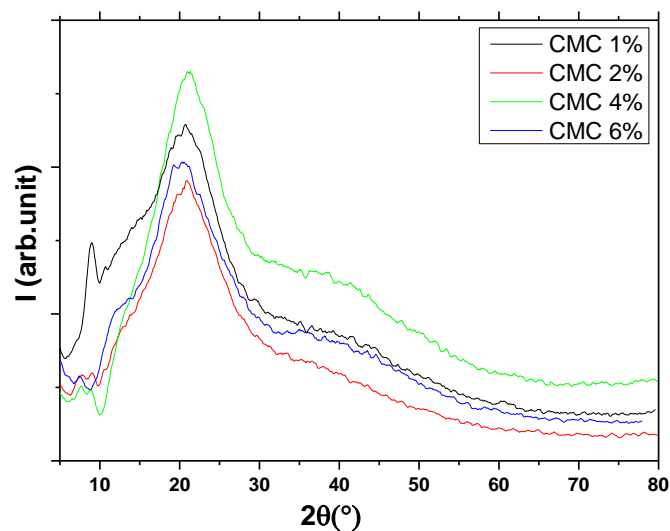
<sup>3</sup> Carbonmed Spółka z ograniczoną odpowiedzialnością, ul. Okólna 2, 50-422 Wrocław, Poland

<sup>4</sup> Department of Engineering, University of Palermo, Viale delle Scienze Bld. 6, I-90128 Palermo, Italy; roberto.scaffaro@unipa.it

<sup>5</sup> Division of Preclinical Research, Faculty of Health Sciences, Wrocław Medical University, Ludwika Pasteura 1, PL-50-367 Wrocław, Poland

<sup>6</sup> Department of Mechanics and Material Science Engineering, Wrocław University of Science and Technology, Smoluchowskiego 25, PL-50-370 Wrocław, Poland; mariusz.hasiak@pwr.edu.pl

\* Correspondence: marialuisa.saladino@unipa.it (M.L.S.); dariusz.bialy@umed.wroc.pl (D.B.); magdalena.wawrzynska@umed.wroc.pl (M.W.)



**Figure S1.** XRD patterns of cellulose films.

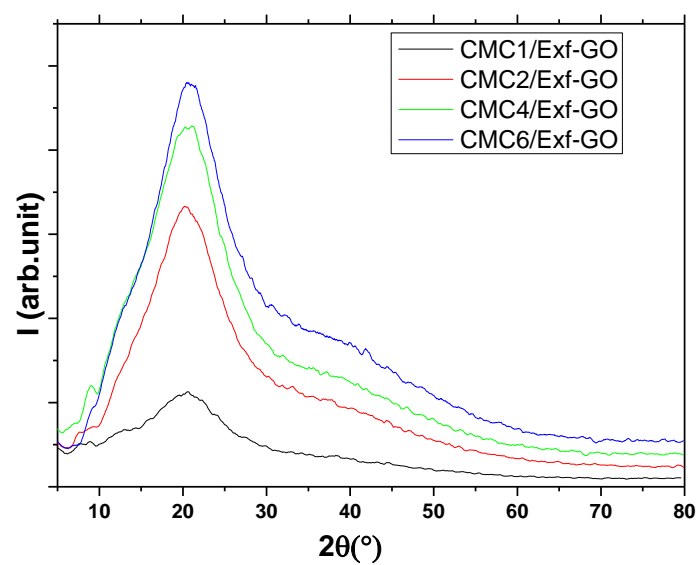


Figure S2. XRD patterns of CMC<sub>x</sub>/Exf-GO nanocomposites.

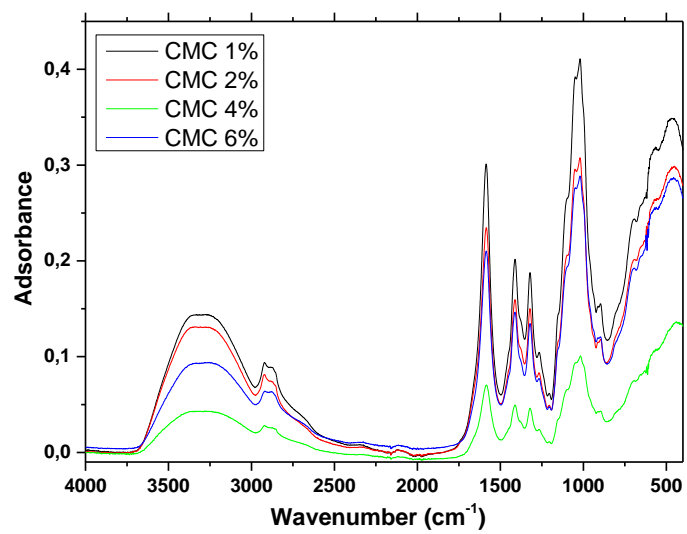


Figure S3. IR spectra of cellulose films.

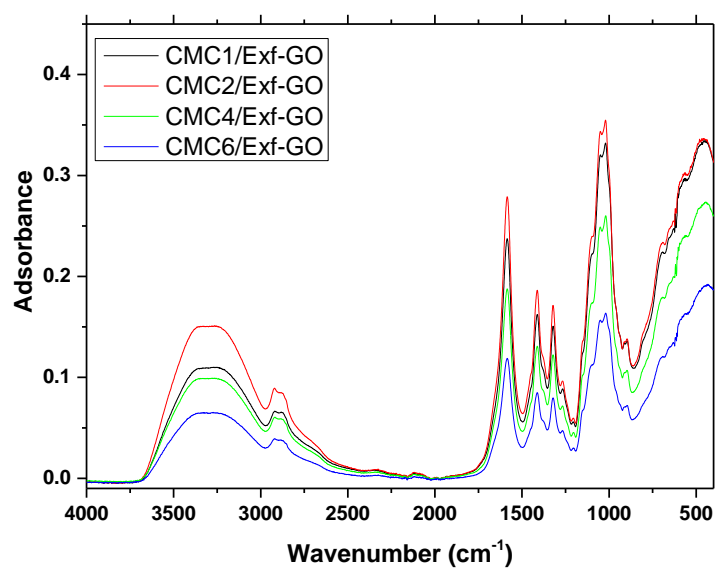


Figure S4. IR spectra of CMC<sub>x</sub>/Exf-GO nanocomposites.

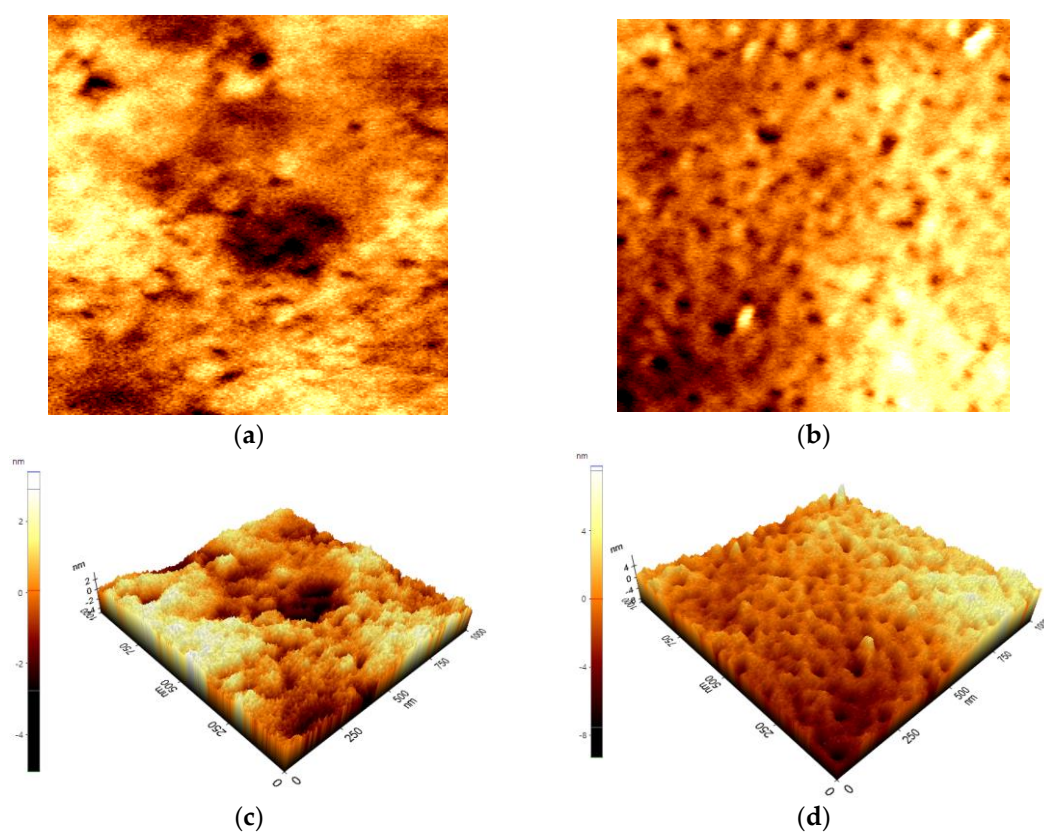
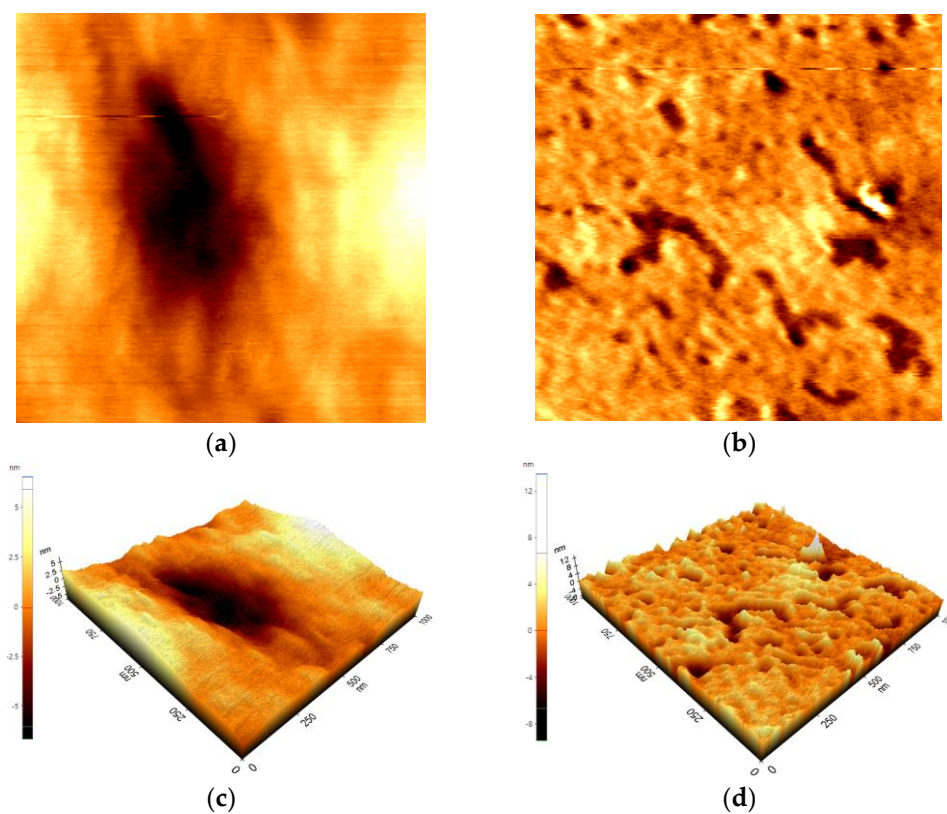
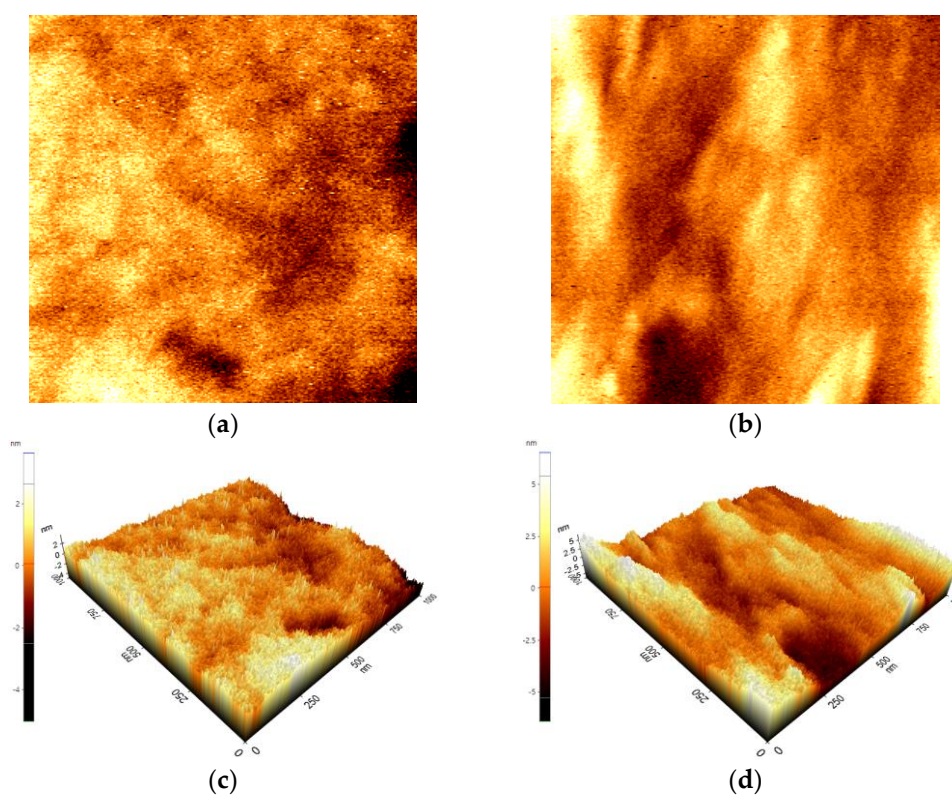


Figure S5. 2D (a, b) and 3D (c, d) AFM topography images for the CMC 1% film (a, c) and CMC1/Exf-GO nanocomposite (b, d) recorded in contact mode for scanning area of 1  $\mu\text{m} \times 1 \mu\text{m}$ .



**Figure S6.** 2D (a, b) and 3D (c, d) AFM topography images for the CMC 2% films (a, c) and CMC2/Exf-GO nanocomposites (b, d) recorded in contact mode for scanning area of  $1 \mu\text{m} \times 1 \mu\text{m}$ .



**Figure S7.** 2D (a, b) and 3D (c, d) AFM topography images for the CMC 4% films (a, c) and CMC4/Exf-GO nanocomposites (b, d) recorded in contact mode for scanning area of  $1 \mu\text{m} \times 1 \mu\text{m}$ .



© 2020 by the authors. Submitted for possible open access publication under the terms and conditions of the Creative Commons Attribution (CC BY) license (<http://creativecommons.org/licenses/by/4.0/>).