

Supplementary materials

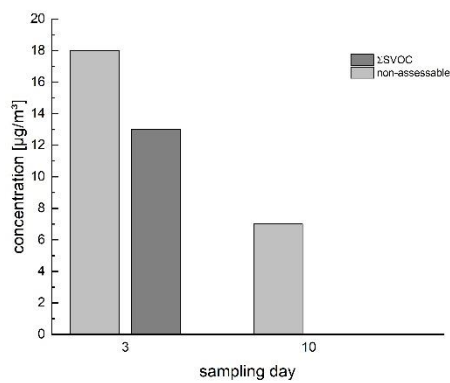
Natural building materials for interior fitting and refurbishment – What about indoor emissions?

Matthias Richter ^{1,*}, Wolfgang Horn ¹, Elevtheria Juritsch ¹, Andrea Klinge ^{2,*}, Leon Radeljic ²
and Oliver Jann ¹

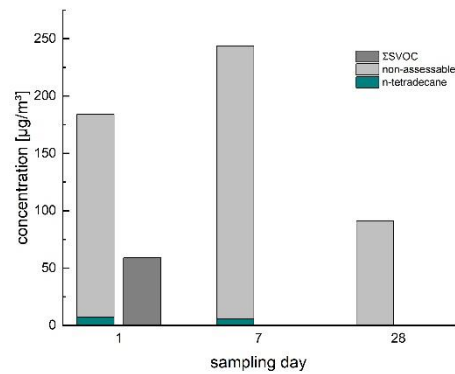
¹ Materials and Air Pollutants Division, Bundesanstalt für Materialforschung und -prüfung (BAM), Unter den Eichen 44-46, 12203 Berlin, Germany;
wolfgang.horn@bam.de (W.H.); ria.juritsch@bam.de (E.J.); oliver.jann@bam.de (O.J.)

² ZRS Architekten Ingenieure, Schlesische Straße 26, 10997 Berlin, Germany;
radeljic@zrs.berlin (L.R.)

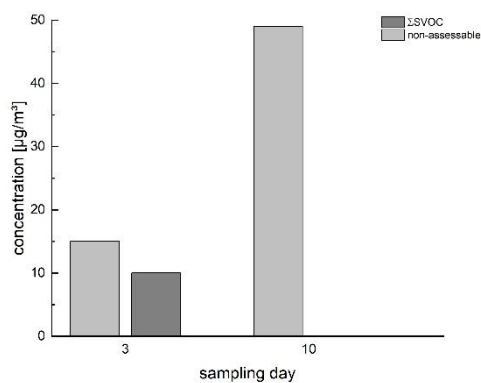
* Correspondence: matthias.richter@bam.de (M.R.); klinge@zrs.berlin (A.K.)



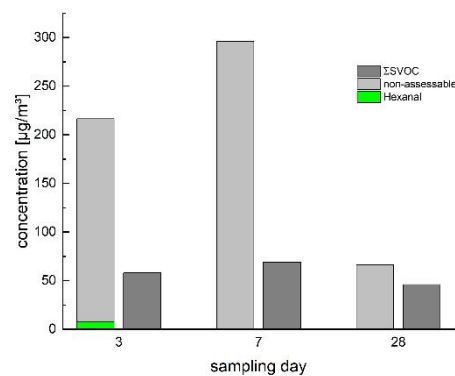
(a)



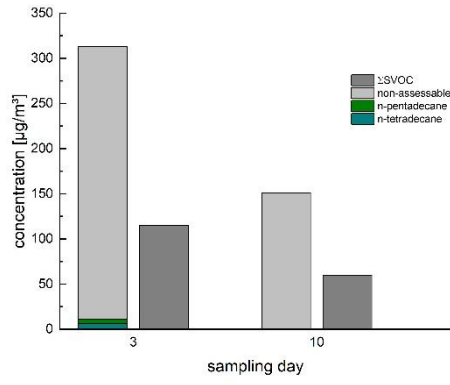
(b)



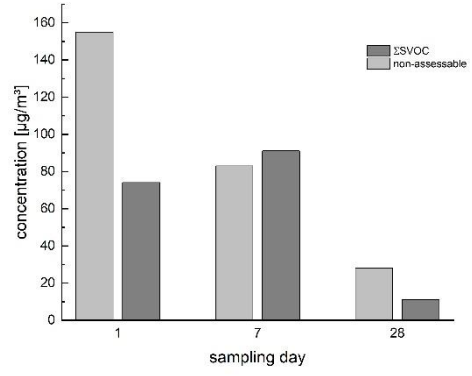
(c)



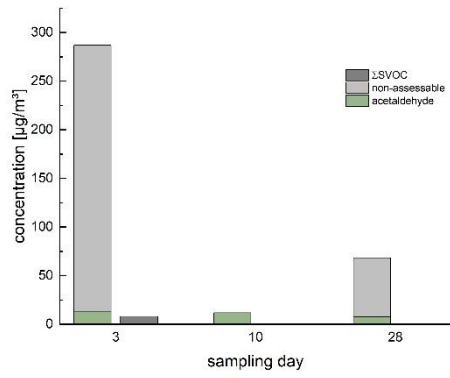
(d)



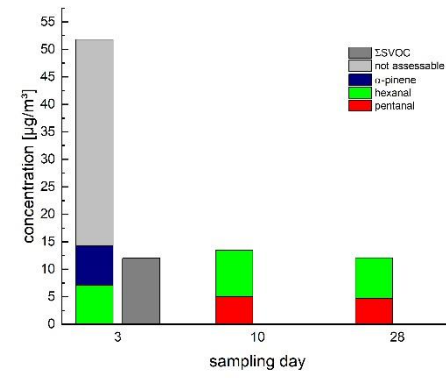
(e)



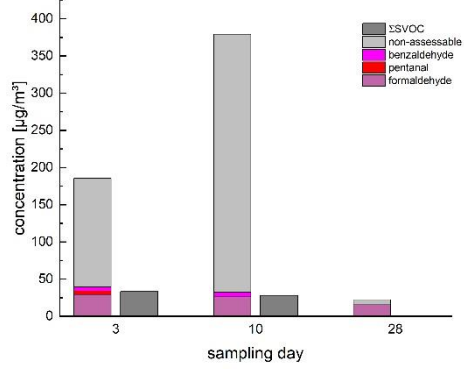
(f)



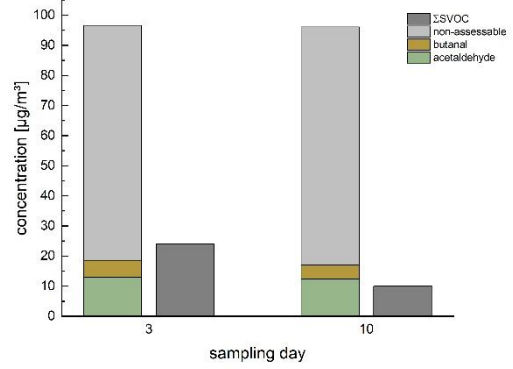
(g)



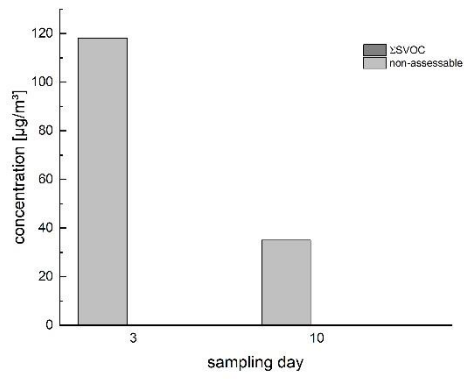
(h)



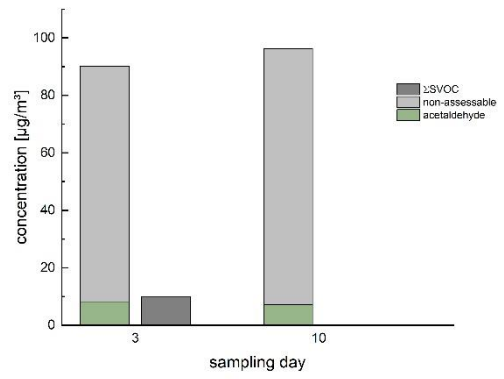
(i)



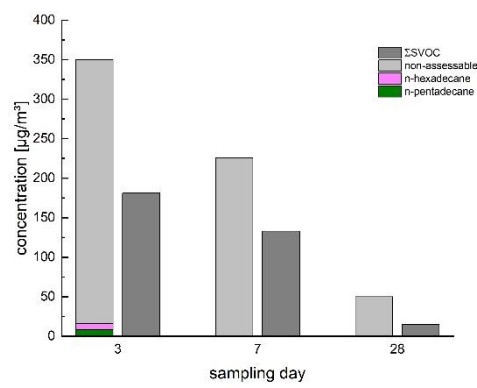
(j)



(k)



(l)



(m)

Figure S1. Measured VOC and Σ SVOC concentrations: Samples no.: (a) 1; (b) 2; (c) 3; (d) 4; (e) 5; (f) 6; (g) 9; (h) 10; (i) 12; (j) 16; (k) 17; (l) 18; (m) 19