

# An injectable Chitosan-based self-healable hydrogel system as an antibacterial wound dressing

*Xiaoyu Wang<sup>†</sup>, Rijian Song<sup>†</sup>, Melissa Johnson, Sigen A, Zhonglei He, Cameron Milne, Xianqing Wang, Irene Lara-Sáez, Qian Xu\*, and Wenxin Wang\**

The Charles Institute of Dermatology, School of Medicine, University College Dublin, Dublin 4, Ireland. Eircode: D04 V1W8; xiaoyu.wang2@ucdconnect.ie (X.W.); rijian.song@ucdconnect.ie (R.S.); melissa.johnson@ucdconnect.ie (M.J.); sigen.a@ucd.ie (S.A.); zhonglei.he@ucd.ie (Z.H.); cameron.milne@ucdconnect.ie (C.M.); xianqing.wang@ucdconnect.ie (X.W.); irene.lara-saez@ucd.ie (I.L.-S.)

\* Correspondence: [qian.xu@ucd.ie](mailto:qian.xu@ucd.ie) (Q.X.); [wenxin.wang@ucd.ie](mailto:wenxin.wang@ucd.ie) (W.W.)

<sup>†</sup> Co-first author

## Contents

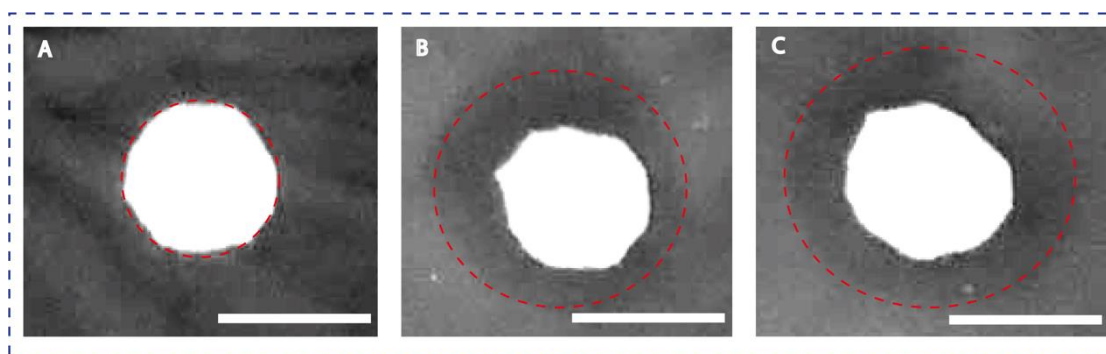
Supplementary tables 1-2

Supplementary figures 1-2

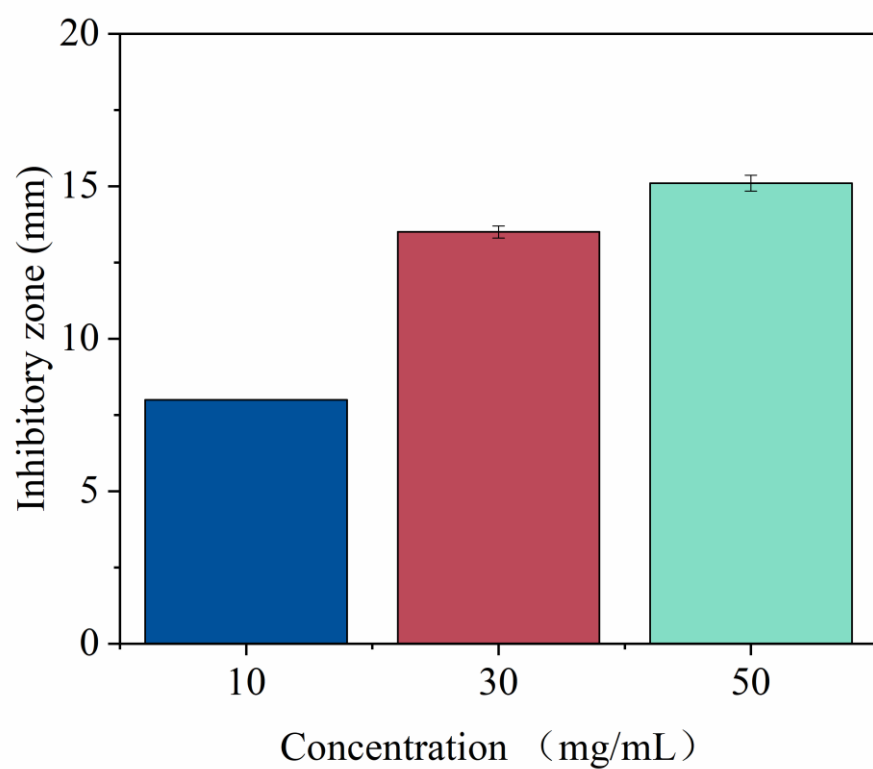
Supplementary references

**Table S1.** Element analysis results of CTS-CHO.

Sample	C (%)	N (%)	H (%)	OD (%)
CTS	41.77	7.12	6.73	N/A
CTS-CHO	38.88	5.32	6.09	14.75%



**Figure S1.** Images of bacterial growth inhibition profile at different concentrations: A: 10 mg/mL; B: 30 mg/mL; C: 50 mg/mL. Scale bar: 8 mm.



**Figure S2.** Bacterial growth inhibition zone at different concentrations: A: 10 mg/mL; B: 30 mg/mL; C: 50 mg/mL (n=3).

**Table S2.** Inhibitory zone of CTS-CHO at different concentrations (n=3).

<b>Concentration (mg/mL)</b>	<b>Average inhibitory zone (mm)</b>
10	8
30	13.5
50	15.0

