

Supplementary Information

Spicy Bitumen: Curcumin effects on the rheological and adhesion properties of Asphalt

Abraham A. Abe ¹, Cesare Oliviero Rossi ^{1,*}, Paolino Caputo ^{1,*}, Maria Penelope De Santo ², Nicolas Godbert ³ and Iolinda Aiello ^{3,4}

¹ Dipartimento di Chimica e Tecnologie Chimiche, Università della Calabria, 87036, Rende, Italy; abraham.abe@unical.it

² Dipartimento di Fisica e CNR-Nanotec, Università della Calabria, via Bucci 31C, 87036, Rende, Italy; maria.desanto@fis.unical.it

³ MAT-InLAB, LASCAMM CR-INSTM, Unità INSTM della Calabria, Dipartimento di Chimica e Tecnologie Chimiche, Università della Calabria, Ponte Pietro Bucci Cubo 14C, 87036, Rende, Italy; nicolas.godbert@unical.it (N.G.); iolinda.aiello@unical.it (I.A.)

⁴ CNR NANOTEC-Istituto di Nanotecnologia U.O.S. Cosenza, 87036, Rende, Italy

* Correspondence: cesare.oliviero@unical.it (C.O.R.); paolino.caputo@unical.it (P.C.)

Figure S1. SEM and EDX composition of the residue obtained after calcination of turmeric powder.

Figure S2. FGC 2H bee-structure domains: topography (left), phase image (right)

Figure S3. AFM-3D representation of FGC 2H domains

Figure S4. AFM-Pure LC50

Figure S5. LC50 + 1% RGC

Figure S5. AFM-LC50 + 1% RGC

Figure S6. Boiling test LC50 and modified Bitumen.

Figure S7. Boiling test C170 and modified bitumen

Citation: Abe, A.A.; Oliviero Rossi, C.; Caputo, P.; De Santo, M.; Godbert, N.; Aiello, I. Spicy Bitumen: Curcumin Effects on the rheological and Adhesion Properties of Asphalt. *Materials* **2021**, *14*, x. <https://doi.org/10.3390/ma14071622>

Academic Editors: Valentina Grumezescu and Oana Gherasim

Received: 25 February 2021

Accepted: 20 March 2021

Published: date

Publisher's Note: MDPI stays neutral with regard to jurisdictional claims in published maps and institutional affiliations.



Copyright: © 2021 by the authors. Submitted for possible open access publication under the terms and conditions of the Creative Commons Attribution (CC BY) license (<http://creativecommons.org/licenses/by/4.0/>).

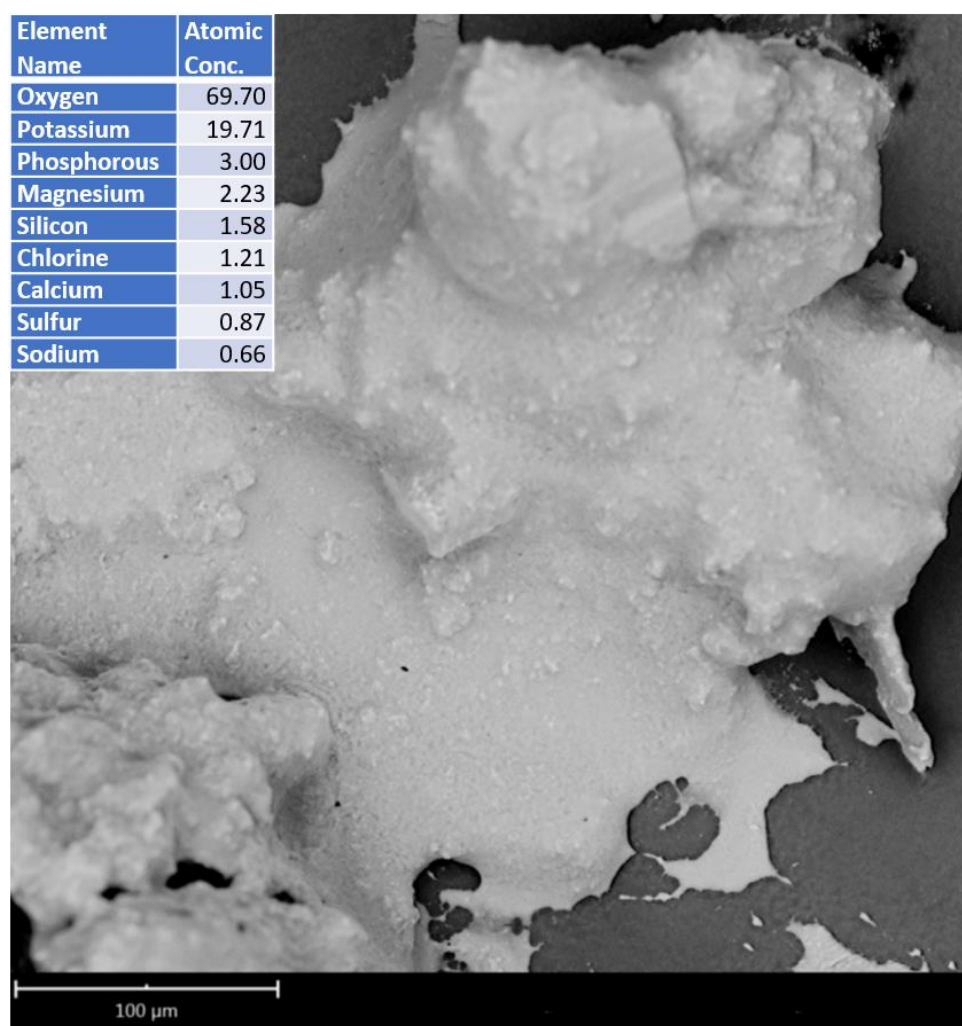


Figure S1. SEM and EDX composition of the residue obtained after calcination of turmeric powder.

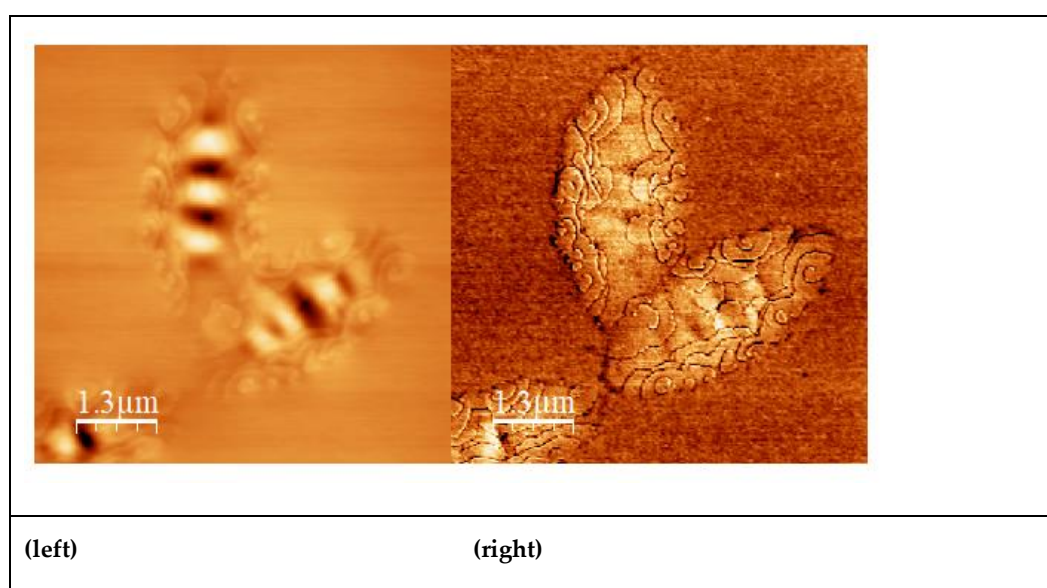


Figure S2. FGC 2H bee-structure domains: topography (left), phase image (right).

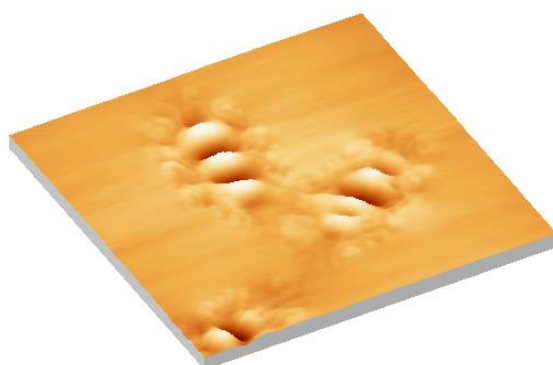


Figure S3. AFM-3D representation of FGC 2H domains.

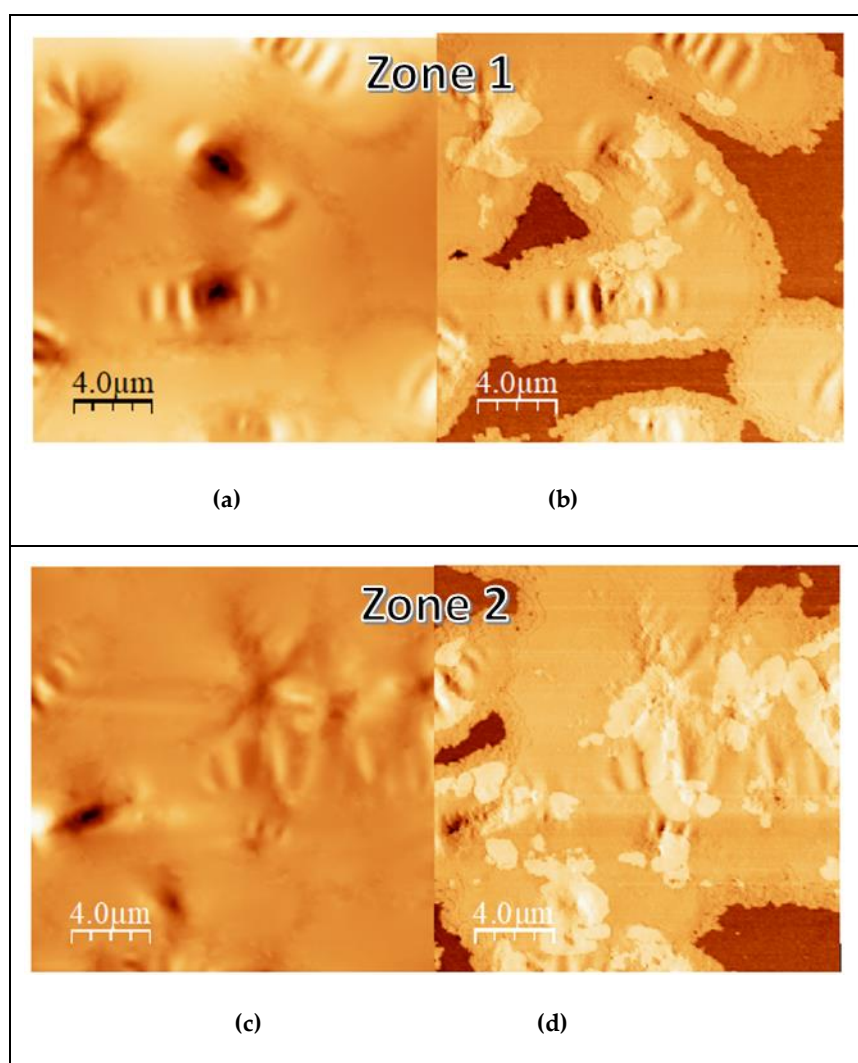


Figure S4. AFM-Pure LC50 sample surface. (a,c): topography and (b,d): phase image.

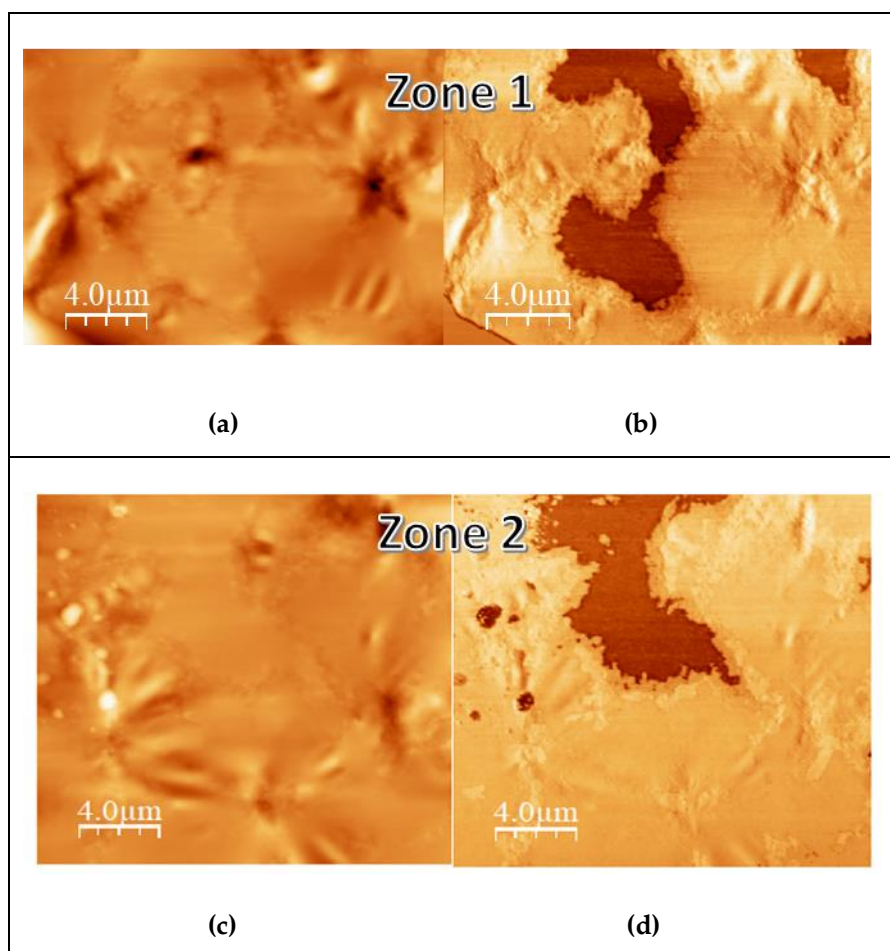


Figure S5. AFM-LC50 + 1% RGC sample surface. (a,c): topography and (b,d): phase image.

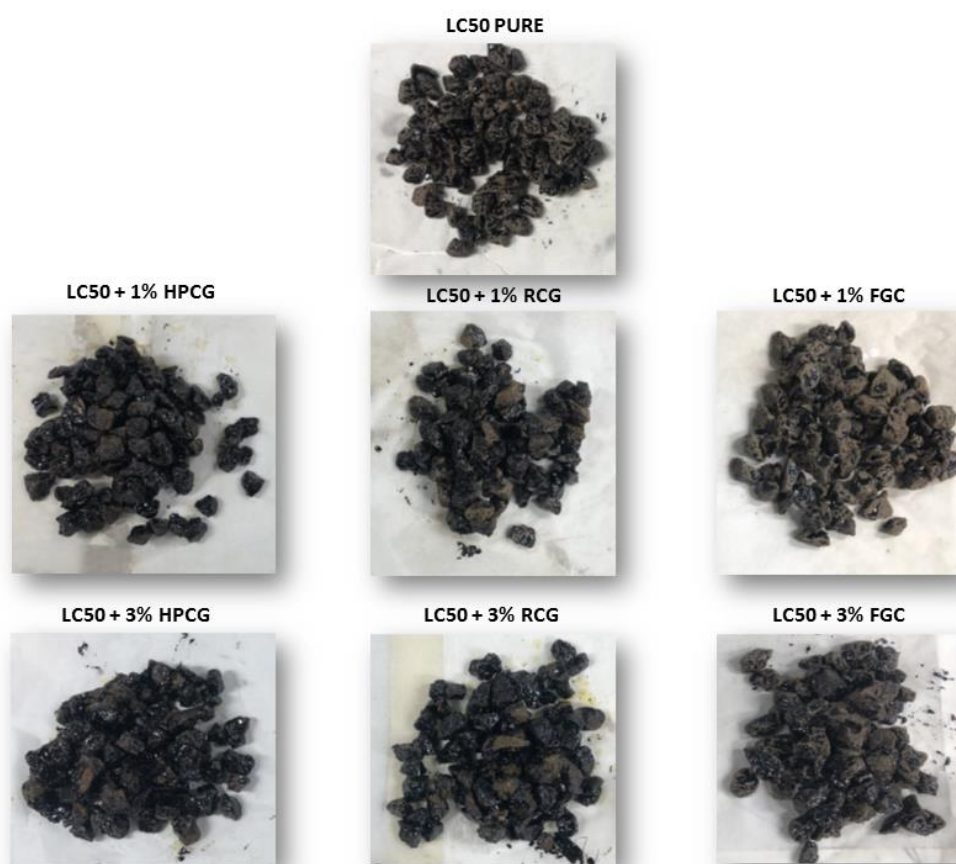


Figure S6. Boiling test LC50 and modified Bitumen.

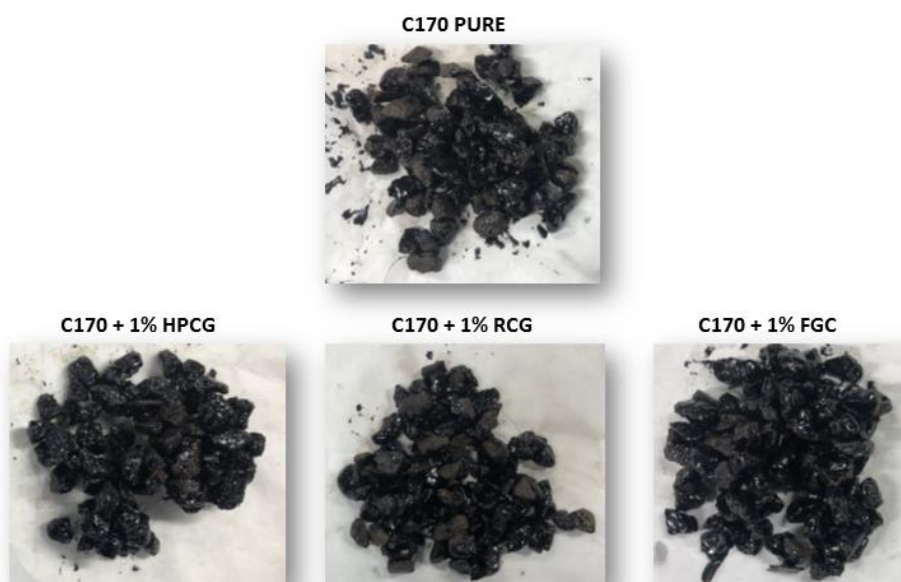


Figure S7. Boiling test C170 and modified bitumen.