

Article

Rare-Earth-Doped Barium Molybdate Up-Conversion Phosphor with Potential Application in Optical Temperature Sensing

Jung-Hyun Wi ¹, Sang-Geon Park ^{2,*}, Young-Seok Shim ³, Kwangjae Lee ⁴ and Jae-Yong Jung ^{5,*}

¹ Department of Smart Manufacturing Engineering, Changwon National University, Changwon 51140, Korea

² Department of Mechatronics Convergence Engineering, Changwon National University, Changwon 51140, Korea

³ School of Energy, Materials and Chemical Engineering, Korea University of Technology and Education, Cheonan 31253, Korea

⁴ Department of Information Security Engineering, SangMyung University, Hongjimun 2-gil, Seoul 03016, Korea

⁵ Research and Business Development Foundation, Engineering Building, Silla University, Busan 45985, Korea

* Correspondence: sgpark@changwon.ac.kr (S.-G.P.); eayoung21@naver.com (J.-Y.J.); Tel.: +82-55-213-3845 (S.-G.P.); +82-51-999-6441 (J.-Y.J.)

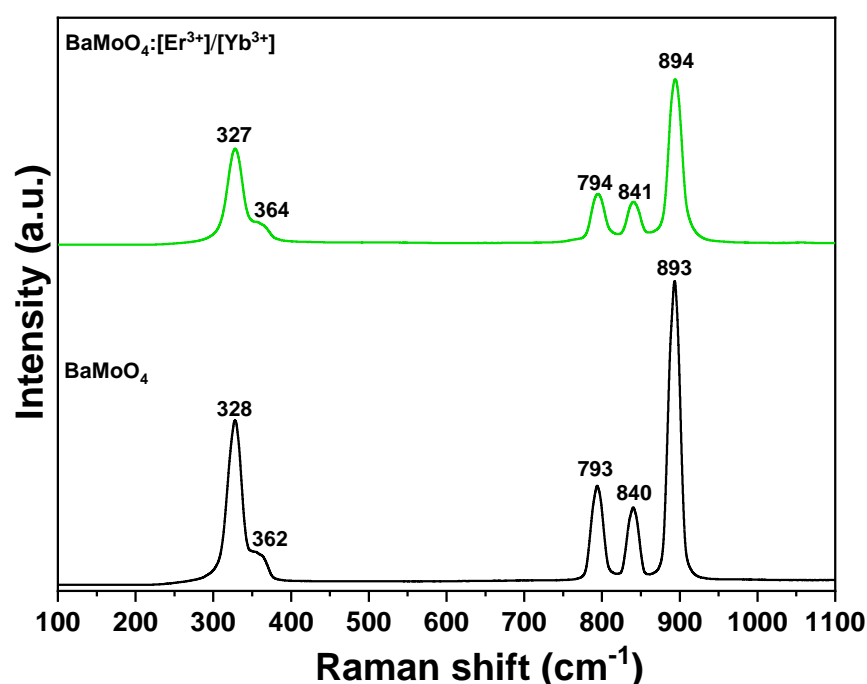


Figure S1. Raman spectra of (a) BaMoO₄ and (b) BaMoO₄:[Er³⁺]/[Yb³⁺] under 532 nm laser.

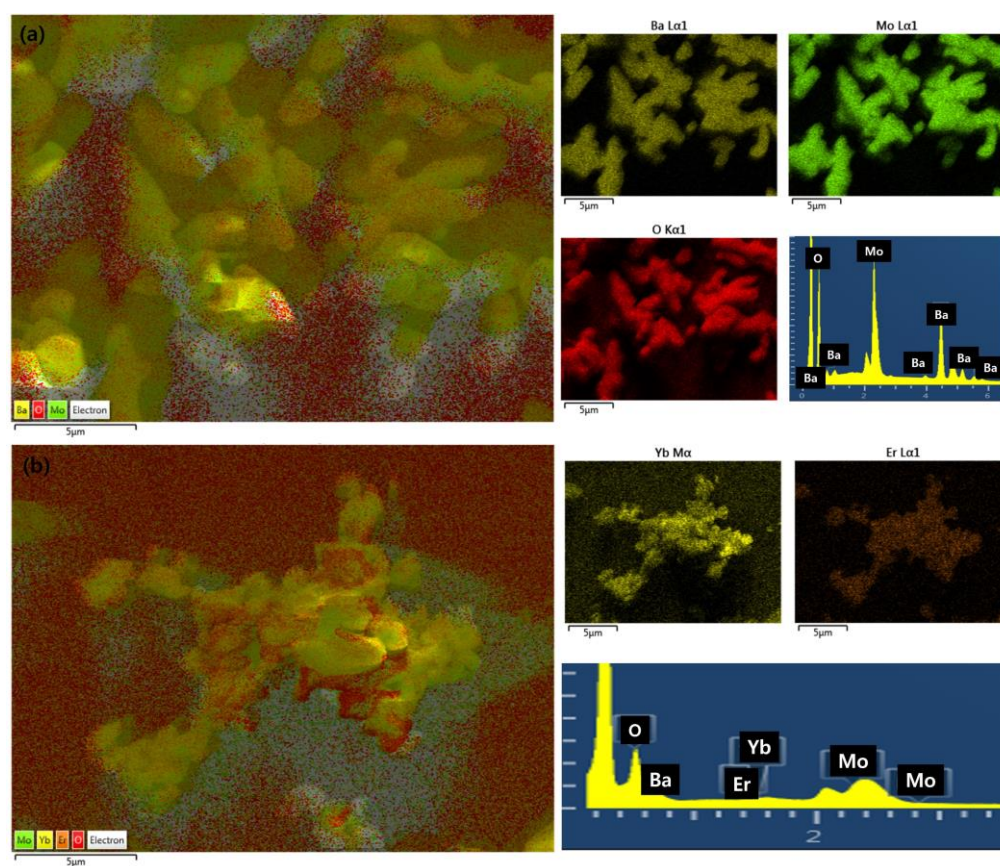


Figure S2. FE-SEM EDS mapping analysis of (a) BaMoO_4 and (b) $\text{BaMoO}_4\text{:}[\text{Er}^{3+}]/[\text{Yb}^{3+}]$ under 532 nm laser.