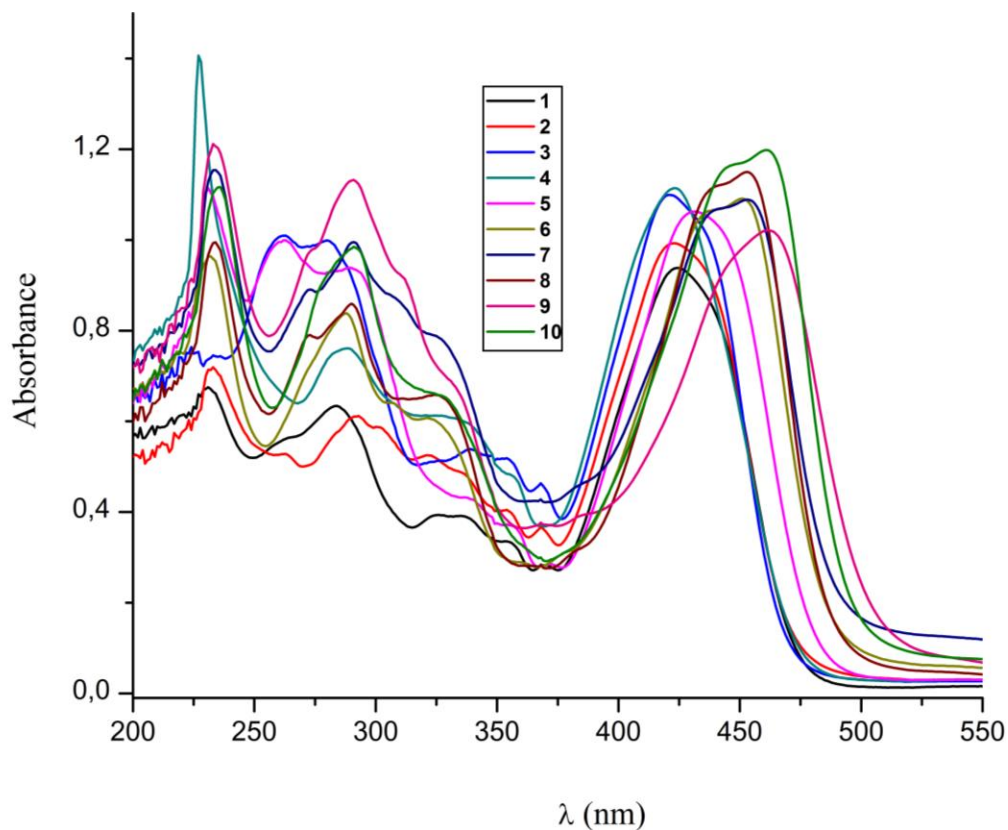
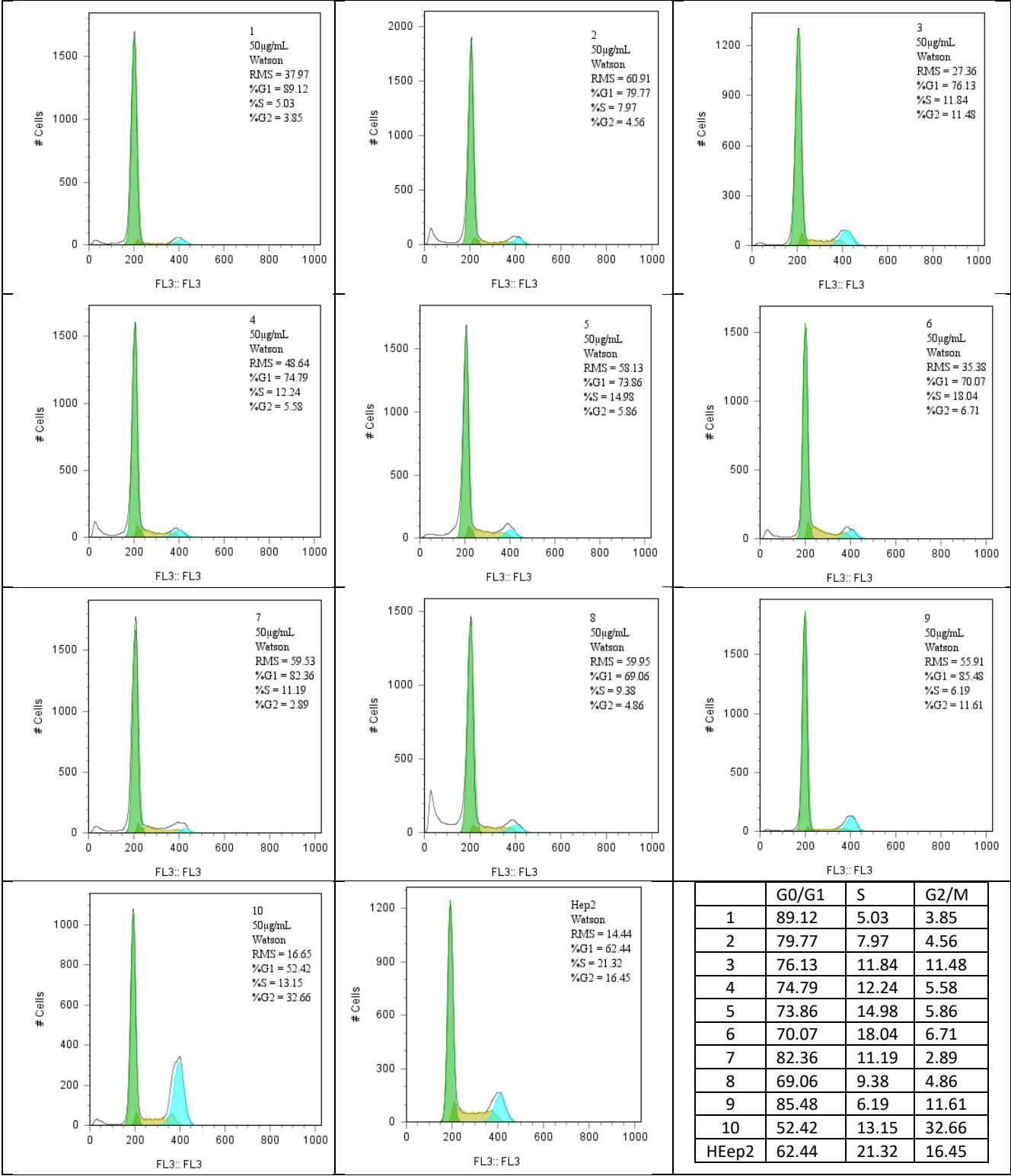


# Design, Synthesis, and Biological Evaluation of New Azulene-Containing Chalcones

Daniela Bala <sup>1</sup>, Luiza-Izabela Jinga <sup>2</sup>, Marcela Popa <sup>3,4</sup>, Anamaria Hanganu <sup>2,5</sup>, Mariana Voicescu <sup>6</sup>, Coralia Bleotu <sup>3,4,7</sup>, Laszlo Tarko <sup>2</sup> and Simona Nica <sup>2,\*</sup>



**Figure S1.** Overlay of the UV-Vis spectra of azulene-chalcone derivatives, **1 – 10** recorded in dichloromethane.



**Figure S2.** Azulene effects on the cell cycle for HEP2. Histograms show the changes in cellular DNA content after treatment with 50 µg/mL azulene.