

Supporting Information

Optimising Hollow-Structured Silicon Nanoparticles for Lithium-Ion Batteries

X-ray Powder Diffraction

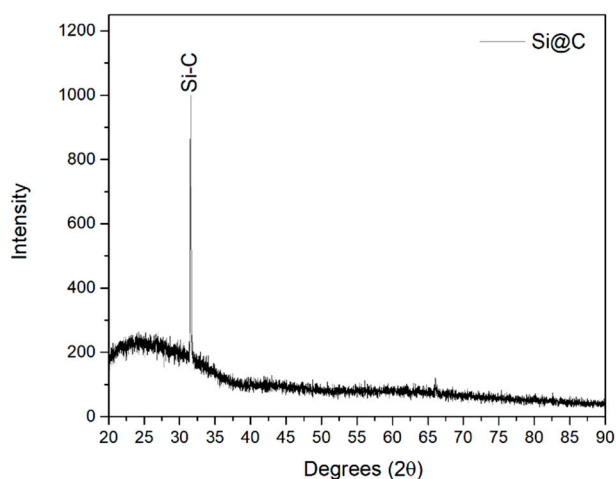


Figure S1. XRD spectrum obtained from Si@C.

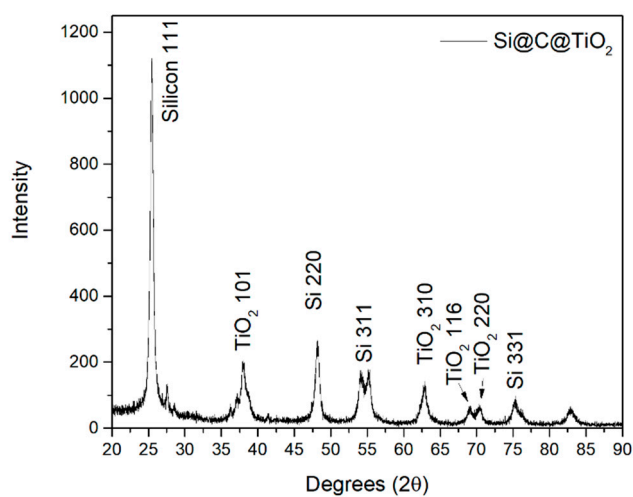


Figure S2. XRD spectrum obtained from Si@C@TiO₂.

Half-cell and full-cell cycling

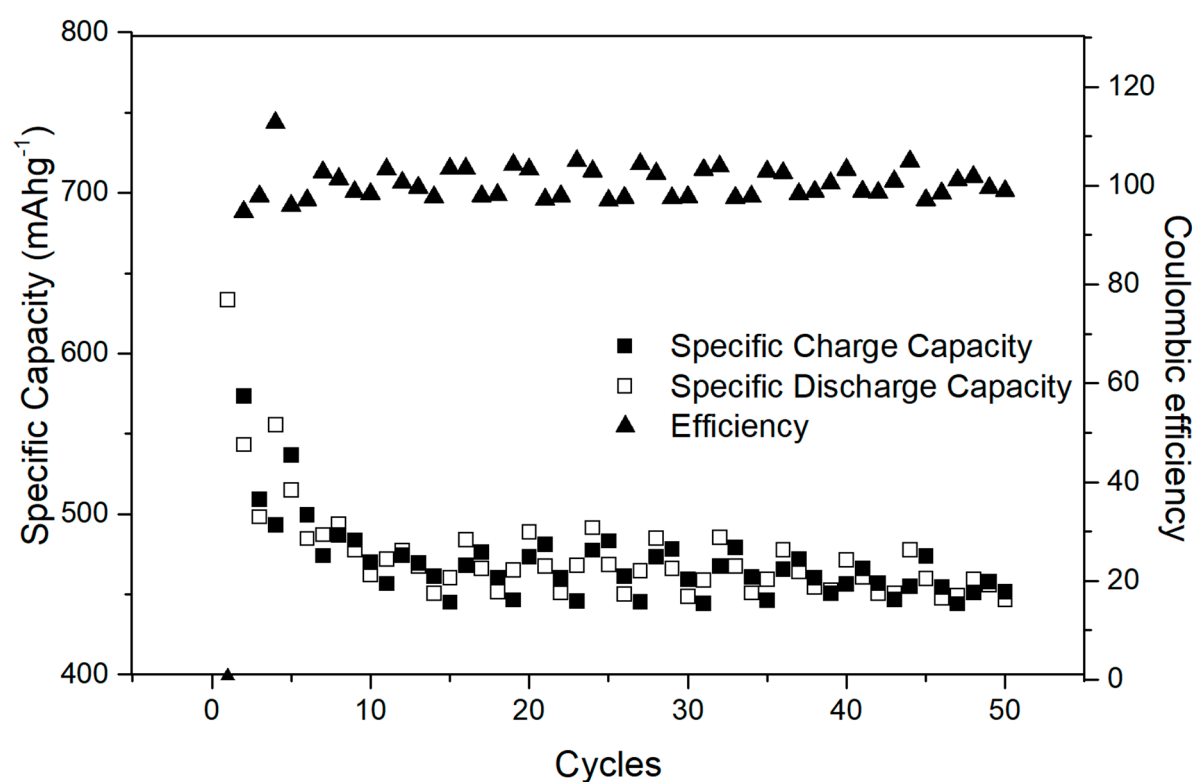


Figure S3. Half-cell specific capacity from Si@TiO₂ (low amount) and coulombic efficiency from Si@TiO₂.

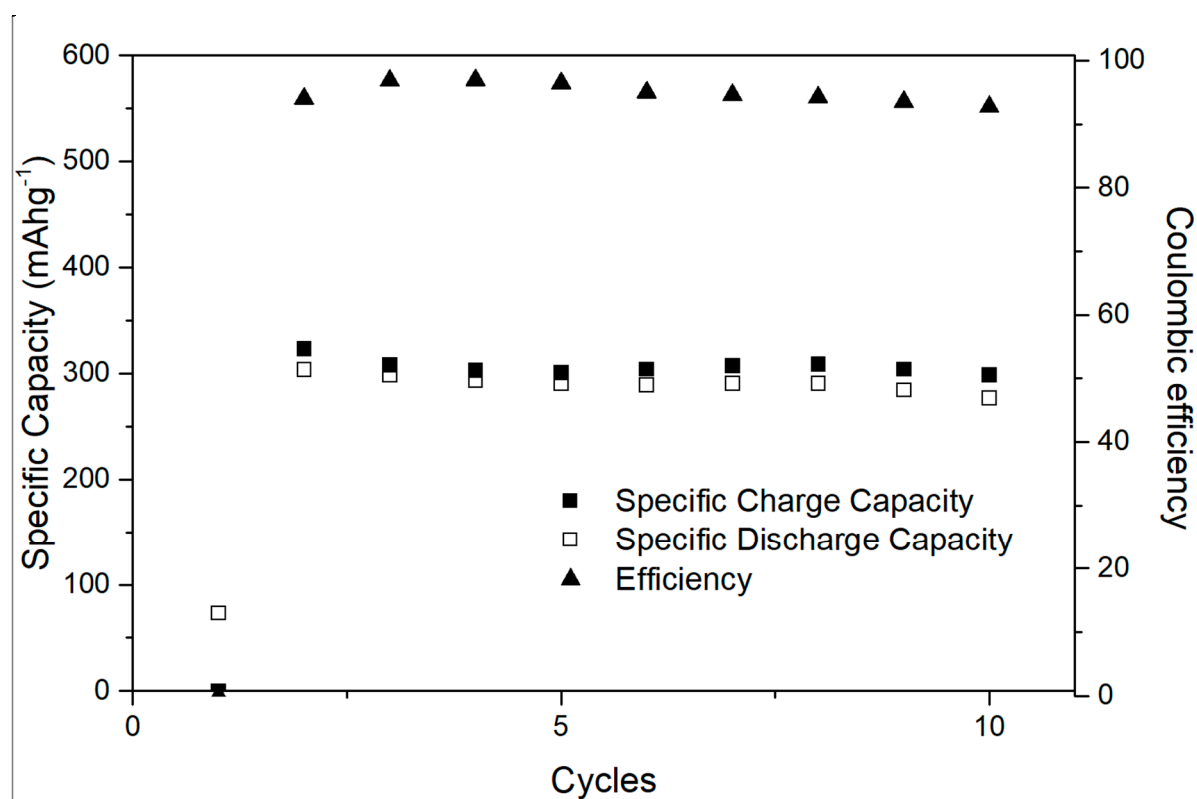


Figure S4. Full-cell specific capacity from Si@TiO₂ (low amount) and coulombic efficiency from Si@TiO₂.